



Brief and handy: everything your dishwasher needs ...
Before using for the first time, read the operating instructions!

1

Adjusting the water softening system *

Ask your water supply company what the **water hardness** is and enter ...



* only **before the first wash** or if the **water hardness** has been changed

Read off the correct setting for your water hardness

*Clarke	Hardness range	mmol/l	Setting	End
0-8	soft	0-1,1	0	<input type="radio"/> <input type="radio"/> <input type="radio"/>
9-20	medium	1,2-2,9	1	<input type="radio"/> <input type="radio"/> <input checked="" type="radio"/>
21-26	hard	3,0-3,7	2	<input type="radio"/> <input checked="" type="radio"/> <input checked="" type="radio"/>
27-44	hard	3,8-6,2	3	<input checked="" type="radio"/> <input checked="" type="radio"/> <input checked="" type="radio"/>

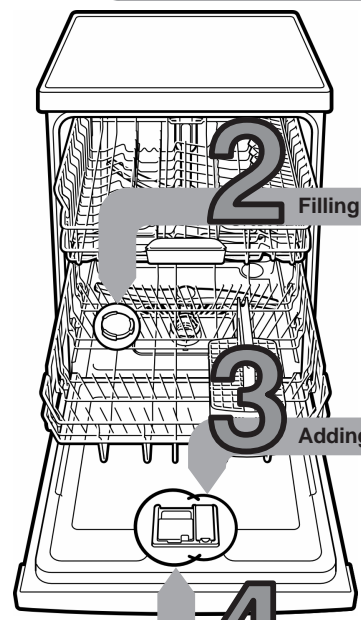
Quickly sorted ...

How to adjust the water softening system

- Switch on ON-/OFF-switch.
- Press and hold down the Start button.
- Rotate programme selector by one notch to the left or to the right.
- Release button.
- The display flashes and the display is lit (= Setting 1).

Change the setting as follows:

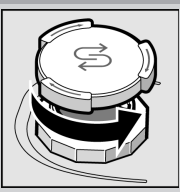
- Rotate programme selector until the required setting has been selected.
- Press Start button.
- The display goes out. The selected setting is saved.



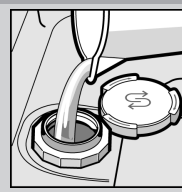
2

Filling the salt dispenser

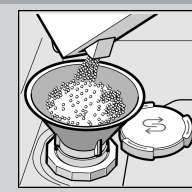
Dissolves limescale (not necessary for set value 0 !) ...



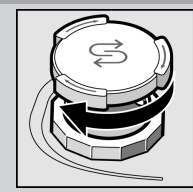
Unscrew cover.



Fill the salt dispenser with water before the first wash only.



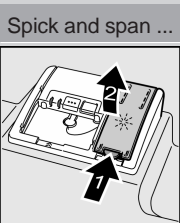
Add salt (never add detergent!).



Screw on the cover. Wash immediately.

3

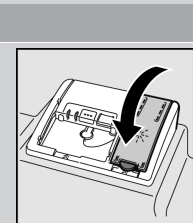
Adding rinse aid



Press mark 1, lift up cover 2.



Adding rinse aid.

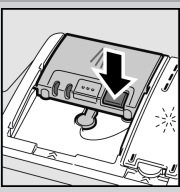


Screw on the cover. CLICK!

4

Adding detergent

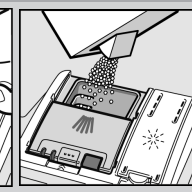
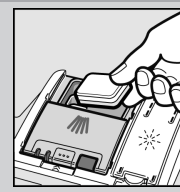
A lot of dirt, a lot of detergent ...



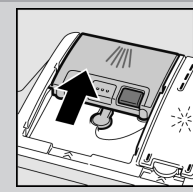
If required, open the cover (press button).



Attention
Combination products are not suitable for all programmes, follow manufacturer's instructions.



Adding detergent.



Slide cover shut, press. PLOP!

5

Switching on the appliance

6

Select programme

Quick, economical or intensive ...

Overview of programmes

The max. possible number of programmes is illustrated in this overview. The corresponding programmes for your appliance can be found on the fascia.

The programme data has been measured in the laboratory according to European standard EN 50242.
Deviations are possible in practice.
* half normal load

	Intensive 70°	Normal 65°	Eco 50°	Gentle 40°	Quick 45°	Prerinse
Duration: hs/mins	2:15	2:10	2:20	1:10	0:29*	0:15
Energy Consumption: kWh	1,50	1,45	1,05	0,80	0,80	0,05
Water consumption in litres	15	14	14	13	10	4

9

Start programme Here we go ...

8

Switch off the appliance Everything o.k. ...

7

Additional options **



Express Wash (VarioSpeed)
... is obtained by increased energy consumption at a constant cleaning and drying performance.



Half load
... for a few items, saves water, energy and time



IntensiveZone
... perfect for a mixed load. Washing pressure and washing temperature are increased slightly.



Hygiene
... The temperature is increased during the rinsing process. This increases the hygiene status.



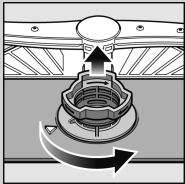
Extra drying
... improves the drying result by increased temperature in the final rinse (Please take care with delicate dishes)

** depending on model

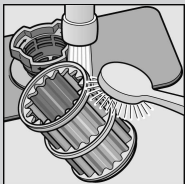
Maintenance and care

Filters ...

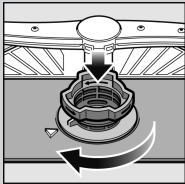
check, if required clean



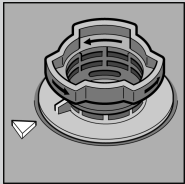
Rotate filter cylinder, remove filter system ...



rinse under running water ...



insert ...

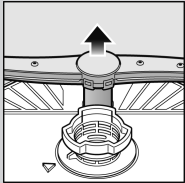


Screw on filter system NOTE MARK!

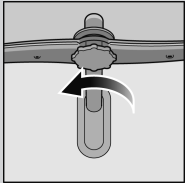
- Pull out the mains plug
- Remove filters and scoop out water
- Lever off cover (→A)
- Check area around the fan impeller for foreign objects
- Click cover shut (→B)
- Insert filters

Spray arms ...

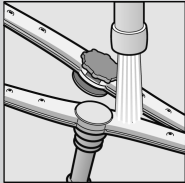
Remove blockages/deposits



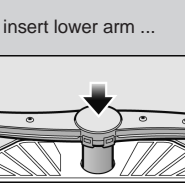
pull lower arm upwards ...



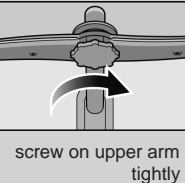
unscrew upper arm ...



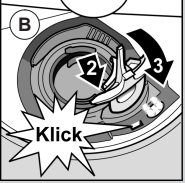
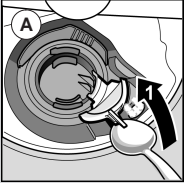
clean spray nozzles under running water (if required use toothpicks) ...



insert lower arm ...


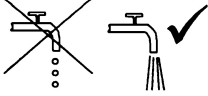




screw on upper arm tightly



Rectifying minor faults yourself ...

... as it is worth doing it yourself!

Fault	Possible causes	Remedial action	Fault	Possible causes	Remedial action
Display “  ” display is lit.	Supply fitting jammed or calcified.  Waste water hose is blocked or kinked. Cover not attached to waste water pump. Waste water pump blocked.	<ul style="list-style-type: none">▶ Open supply fitting.▶ 1. Unscrew water connection.▶ 2. Clean filter in the water connection.▶ 3. Flow rate must be min. 10 l/min. when water supply is open.▶ If the flow rate is less, replace the supply fitting.▶ Install supply hose without kinks.▶ Install waste water hose without kinks.▶ Attach cover (see above).▶ Clean waste-water pump (see above).	Utensils are not clean.	Utensils are situated close together or one above the other.	<ul style="list-style-type: none">▶ Separate the utensils, prevent contact points.
Display “  ” flashes.	Appliance has technical defect.	<ul style="list-style-type: none">▶ Call factory customer service.▶ Unplug appliance.	Sand or gritty residue on the utensils. 	Too little detergent. Unsuitable programme selected. Spray arm nozzles blocked. Filters dirty, not seated firmly. Spray arms blocked.	<ul style="list-style-type: none">▶ Follow manufacturer's instructions (detergent).▶ Select a more intensive programme.▶ Clean the spray arms (see above).▶ Clean the filters (see above).▶ Arrange the utensils so that the spray arms can rotate freely.
Residual water in the appliance.	The programme has not yet ended.	<ul style="list-style-type: none">▶ Close and switch on the appliance or terminate the programme (see Terminating the programme).	Stains and streaks.	Rinse-aid dosage too high/too low.	<ul style="list-style-type: none">▶ Streaks: reduce dosage.
Rust on the cutlery.	Cutlery not rust-resistant. Hard knife blades are more susceptible. Extraneous rust.	<ul style="list-style-type: none">▶ Use dishwasher-proof cutlery.▶ Never wash rusting parts in the appliance.	Milky deposits on the utensils (can be removed).	Water softening system incorrectly set; No salt.	<ul style="list-style-type: none">▶ Water or limescale stains: increase dosage.▶ Correctly set water softening system.▶ Refill with salt.
			Milky deposits, glasses cloudy/tarnished (cannot be removed).	Glasses not dishwasher-proof.	<ul style="list-style-type: none">▶ Use dishwasher-proof glasses.
			Plastic/utensils discoloured.	Too little detergent. Discoloration caused by food colourings (tomato sauce).	<ul style="list-style-type: none">▶ Follow manufacturer's instructions (detergent).▶ Discoloration is harmless; subsequent rinse cycles will cause it to fade.

More information can be found in the operating instructions

Terminating the programme ...

While the programme is running, press the START button for approx. 3 sec. (Reset).



The numerical display indicates “0:01” approx. 1 minute after the programme ends, 0:00 is indicated



Switching off the appliance

Loading the dishwasher correctly ...

Dishwasher-proof utensils (not soiled with ash, wax, lubricating grease, ink or adhesive labels; remove large remnants of jam, milk products and food according to the operating instructions and check that the spray arms can rotate freely.