



Brief and handy: everything your dishwasher needs ...

Before using for the first time, read the operating instructions!

1

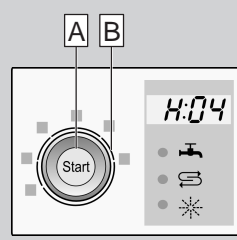
Adjusting the water softening system *

Ask your water supply company what the water hardness is and enter ...



* only before the first wash or if the water hardness has been changed

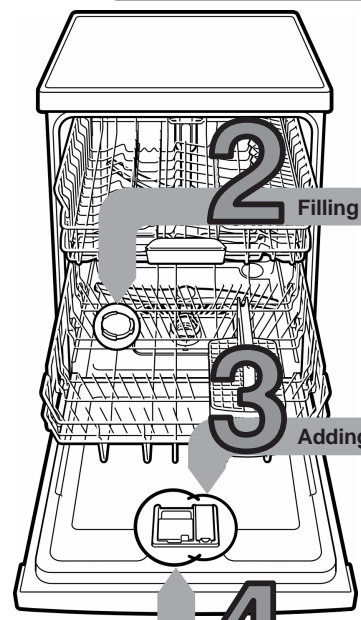
Water hardness value * Clarke	Hardness range	mmol/l	Set value on the machine
0-8	soft	0-1.1	H:00
9-10	soft	1.2-1.4	H:01
11-12	medium	1.5-1.8	H:02
13-15	medium	1.9-2.1	H:03
16-20	medium	2.2-2.9	H:04
21-26	hard	3.0-3.7	H:05
27-38	hard	3.8-5.4	H:06
39-62	hard	5.5-8.9	H:07



Quickly sorted ...

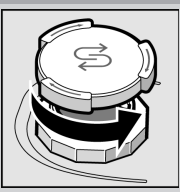
How to adjust the water softening system

- Switch on ON/OFF switch.
- Press and hold down the Start button **A**.
- Rotate programme selector **B** until **H:0** is indicated on the digital display.
- Release button.
- The factory-set value **H:04** is lit on the digital display.
- Rotate programme selector **B** until the required value is indicated on the digital display.
- Press Start button **A**.
- The set value is saved.

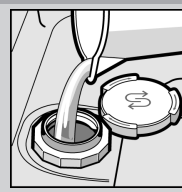


Filling the salt dispenser

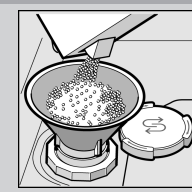
Dissolves limescale (not necessary for set value 0 !) ...



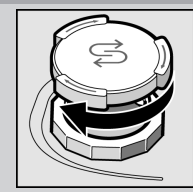
Unscrew cover.



Fill the salt dispenser with water before the first wash only.

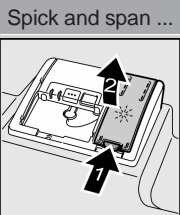


Add salt (never add detergent!).



Screw on the cover. Wash immediately.

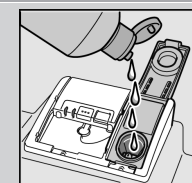
Adding rinse aid



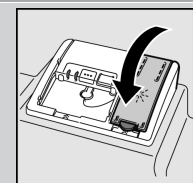
Press mark 1, lift up cover 2.



Refill if rinse-aid refill indicator is lit!

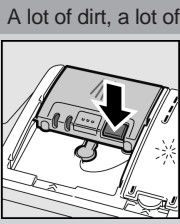


Adding rinse aid.



Screw on the cover. CLICK!

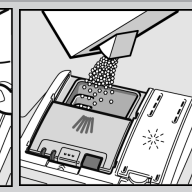
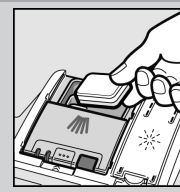
Adding detergent



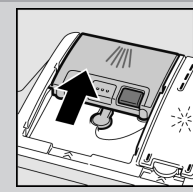
If required, open the cover (press button).



Attention
Combination products are not suitable for all programmes, follow manufacturer's instructions.



Adding detergent.



Slide cover shut, press. PLOP!

Switching on the appliance

Select programme

Quick, economical or intensive ...

Overview of programmes

The max. possible number of programmes is illustrated in this overview. The corresponding programmes for your appliance can be found on the fascia.

The programme data has been measured in the laboratory according to European standard EN 50242. Deviations are possible in practice.
* half normal load

	Intensive 70°	Normal 65°	Eco 50°	Gentle 40°	Quick 45°	Prerinse
Duration: hs/mins	2:15	2:10	2:20	1:10	0:29*	0:15
Energy Consumption: kWh	1,50	1,45	1,05	0,80	0,80	0,05
Water consumption in litres	15	14	12	13	10	4

Start programme Here we go ...

Switch off the appliance Everything o.k. ...

Additional options **



Express Wash (VarioSpeed)
... is obtained by increased energy consumption at a constant cleaning and drying performance.



Half load
... for a few items, saves water, energy and time



IntensiveZone
... perfect for a mixed load. Washing pressure and washing temperature are increased slightly.



Hygiene
... The temperature is increased during the rinsing process. This increases the hygiene status.



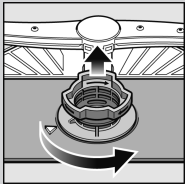
Extra drying
... improves the drying result by increased temperature in the final rinse (Please take care with delicate dishes)

** depending on model

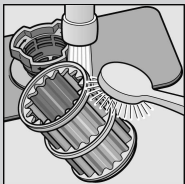
Maintenance and care

Filters ...

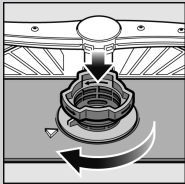
check, if required clean



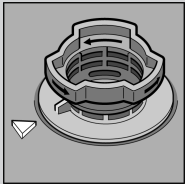
Rotate filter cylinder, remove filter system ...



rinse under running water ...



insert ...

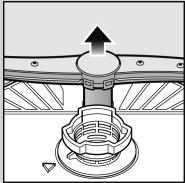


Screw on filter system NOTE MARK!

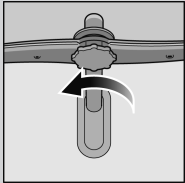
- Pull out the mains plug
- Remove filters and scoop out water
- Lever off cover (→A)
- Check area around the fan impeller for foreign objects
- Click cover shut (→B)
- Insert filters

Spray arms ...

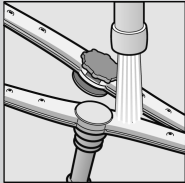
Remove blockages/deposits



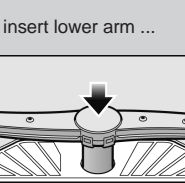
pull lower arm upwards ...



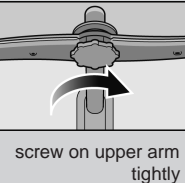
unscrew upper arm ...



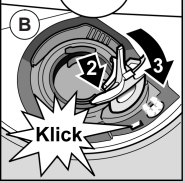
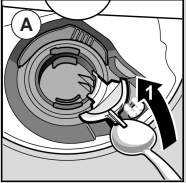
clean spray nozzles under running water (if required use toothpicks) ...



insert lower arm ...


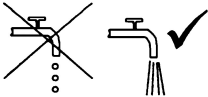




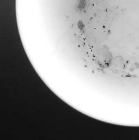
screw on upper arm tightly



Rectifying minor faults yourself ...

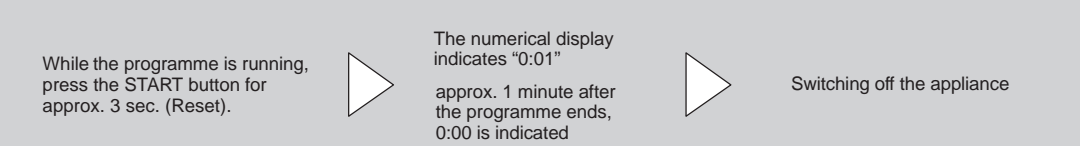
... as it is worth doing it yourself!

Fault	Possible causes	Remedial action
Display “  ” display is lit	Supply fitting jammed or calcified	<ul style="list-style-type: none">▶ Open supply fitting.▶ 1. Unscrew water connection.▶ 2. Clean filter in the water connection.▶ 3. Flow rate must be min. 10 l/min. when water supply is open. If the flow rate is less, replace the supply fitting.
		<ul style="list-style-type: none">▶ Install supply hose without kinks.
Display “E:24” and “  ” is lit	Waste water hose is blocked or kinked	<ul style="list-style-type: none">▶ Install waste water hose without kinks.
	Cover not attached to waste water pump	<ul style="list-style-type: none">▶ Attach cover (see above).
Display “E:25” and “  ” is lit	Waste water pump blocked	<ul style="list-style-type: none">▶ Clean waste-water pump (see above).
Other fault display “E:XX” is lit	Appliance has technical defect	<ul style="list-style-type: none">▶ Call factory customer service (state fault display).▶ Unplug appliance.
Residual water in the appliance	The programme has not yet ended	<ul style="list-style-type: none">▶ Close and switch on the appliance or terminate the programme (see Terminating the programme).
Rust on the cutlery	Cutlery not rust-resistant. Hard knife blades are more susceptible	<ul style="list-style-type: none">▶ Use dishwasher-proof cutlery.
	Extraneous rust	<ul style="list-style-type: none">▶ Never wash rusting parts in the appliance.

Fault	Possible causes	Remedial action
Utensils are not clean	Utensils are situated close together or one above the other	<ul style="list-style-type: none">▶ Separate the utensils, prevent contact points.
Sand or gritty residue on the utensils	Too little detergent	<ul style="list-style-type: none">▶ Follow manufacturer's instructions (detergent).
	Unsuitable programme selected	<ul style="list-style-type: none">▶ Select a more intensive programme.
	Spray arm nozzles blocked	<ul style="list-style-type: none">▶ Clean the spray arms (see above).
	Filters dirty, not seated firmly	<ul style="list-style-type: none">▶ Clean the filters (see above).
	Spray arms blocked	<ul style="list-style-type: none">▶ Arrange the utensils so that the spray arms can rotate freely.
Stains and streaks	Rinse-aid dosage too high/too low	<ul style="list-style-type: none">▶ Streaks: reduce dosage.
		<ul style="list-style-type: none">▶ Water or limescale stains: increase dosage.
Milky deposits on the utensils (can be removed)	Water softening system incorrectly set;	<ul style="list-style-type: none">▶ Correctly set water softening system.
	No salt	<ul style="list-style-type: none">▶ Refill with salt.
Milky deposits, glasses cloudy/tarnished (cannot be removed)	Glasses not dishwasher-proof.	<ul style="list-style-type: none">▶ Use dishwasher-proof glasses.
		<ul style="list-style-type: none">▶ Use a detergent suitable for glasses.
Plastic/utensils discoloured	Too little detergent.	<ul style="list-style-type: none">▶ Follow manufacturer's instructions (detergent).
	Discoloration caused by food colourings (tomato sauce)	<ul style="list-style-type: none">▶ Discoloration is harmless; subsequent rinse cycles will cause it to fade.

More information can be found in the operating instructions

Terminating the programme ...



Loading the dishwasher correctly ...

Dishwasher-proof utensils (not soiled with ash, wax, lubricating grease, ink or adhesive labels; remove large remnants of jam, milk products and food according to the operating instructions and check that the spray arms can rotate freely).