

# Your washing machine

**Congratulations** – you have opted for a modern, high-quality domestic appliance manufactured by Bosch. The washing machine is distinguished by its economical use of water and energy. Each appliance which leaves our factory is inspected thoroughly to ensure that it functions properly and is in perfect condition.

- Please read the operating instructions and installation instructions supplied before switching on the washing machine.
- Any failure and losses caused by ignoring the above mentioned items, including cautions in the instructions, are not covered by our warranty and liability.
- Please keep all documents in a safe place for further reference. In cases of doubt, please contact customer service.
- Follow the safety instructions on Page 8.
- Contents of this instruction could be changed without written notice.

## Contents

Intended use	1
Preparation	2
Washing	3/4
Display information, Option buttons	5
Additional functions	6
Programme overview	7
Safety instructions	8
Important information	8
Cleaning and care	9/10
Consumption values	11
Scope of delivery	11
Customer service	12
Technical specification	12
Fault display	12
What to do if	13

## Protection of the environment/Conservation tips

- Load the maximum amount of laundry for the particular programme.
- Wash normally soiled laundry without prewash.
- Select **Intensive 60 °C** with additional function **Intensive** (do not select additional function **Speed Wash**), to achieve a good cleaning result with significantly lower energy consumption.
- Dose detergent according to the manufacturer's instructions and water hardness.
- If the laundry is to be subsequently dried in a tumble dryer, select a spin speed as specified by the dryer manufacturer.

# Intended use

- For domestic use only.
- For washing machine-washable fabrics in a detergent solution.
- To be operated with cold mains water and commercially available detergents and care products which are suitable for use in washing machines.
- Operating conditions:
  - ambient temperature 0-40 °C
  - relative air humidity: under 95% (tested at 25 °C)

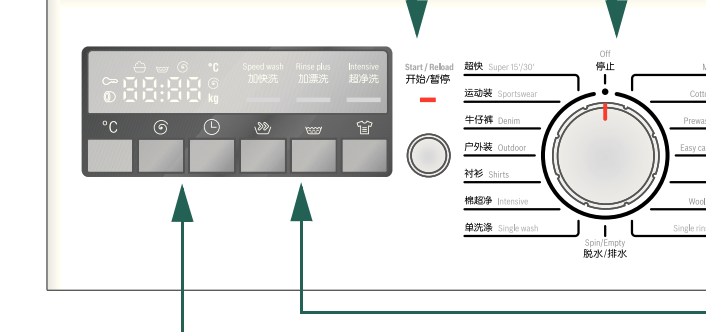
- Do not leave children unattended near the washing machine.
- Keep pets away from the washing machine.
- The washing machine is not to be used by children or persons not familiar with the operating instructions.
- Install and operate the washing machine in a room with a drain.
- In order to ensure your safety, you must plug the cable into a socket which is correctly connected to a reliable earth connection.

## Start/Reload

For starting / pausing the washing cycle

## Programme selector

For switching the machine on and off for selecting the programme. Can be rotated in either direction



Indicates the settings which have been selected

# Preparation

**Check the machine**  
 - Never switch on a damaged machine.  
 - Inform your after-sales service.

**Insert the mains plug**  
 With dry hands only. Only hold the plug by the plug body.

## Turn on the tap

Correct installation according to separate installation instructions. Remove the transport bolts and install the bottom cover before using the appliance for the first time.

## Close the washing machine door

Take care not to trap any items of clothing between the loading door and rubber seal.

## Add detergent and care product

Add the appropriate amount according to: Amount of laundry, level of soiling, water hardness (ask your water supply company) and manufacturer's instructions. Pour liquid detergent into the appropriate dispenser. During operation: take care when opening the detergent drawer.

## Set the programme

For detailed programme information, see programme overview → page 7. For option buttons → page 5.

## Select additional functions

For additional functions → page 6.

## Press the "Start/Reload" button

The programme starts.

# Washing

## Sort and load the washing

Follow manufacturer's care information. Sort according to the information on the care labels. Sort according to type, colour, level of soiling and temperature. Do not exceed the maximum load → Page 7. Observe the instructions in the Important information section → Page 8! Load both large and small items of washing together.

## Close the washing machine door

Take care not to trap any items of clothing between the loading door and rubber seal.

## Add detergent and care product

Dilute viscous fabric softener and fabric conditioner with water. This prevents blockages.

## Set the programme

For detailed programme information, see programme overview → page 7. For option buttons → page 5.

## Select additional functions

For additional functions → page 6.

## Press the "Start/Reload" button

The programme starts.

# Removing the laundry

Open the washing machine door and remove the laundry. Leave the door and detergent drawer open to allow the interior of the machine to dry.

## Turn off the tap

If the childproof lock is active, deactivate it → page 6. Set Programme selector to **Off**.

## Switch off

If the childproof lock is active, deactivate it → page 6. Set Programme selector to **Off**.

## Programme ended when ...

"End" and "0" appear on the display field, and the buzzer sounds.  
 "..." appear on the display field, and the buzzer sounds. → page 5 **Special symbol**

## Changing the programme ...

If you have accidentally selected the wrong programme:  
 - If the childproof lock is active, deactivate it → page 6.  
 - Turn the programme selector to a newly selected programme.  
 - If required, select additional functions.  
 - Press the **Start/Reload** button, new programme starts.

## Pausing a programme ...

If you would like to pause a programme while it is running without changing the sequence:  
 - If the childproof lock is active, deactivate it → page 6.  
 - Press the **Start/Reload** button:  
 - When "YE5" and "0" flash on the display field, wait for at least 2 minutes.  
 - When "YE5" and "0" appear, the door can be opened. If required, add/remove the laundry.  
 - If "n0" appears for a prolonged period, the door cannot be opened for reasons of your safety.  
 - Press the **Start/Reload** button to continue the programme.

## ... or terminate the programme

If you would like to terminate a programme:  
 - If the childproof lock is active, deactivate it → page 6.  
 - Turn the programme selector to **Spin/Empty**.  
 - Press the **Start/Reload** button.  
 - Remove the laundry after the spinning cycle.

# Display information, Option buttons

## Display Information

☺ wash: Not on if <b>Single Rinse</b> or <b>Spin/Empty</b> is selected flashing: too much detergent used → page 13
☹ Rinse: Not on if <b>Spin/Empty</b> is selected
⊗ Spin: Not on if "..." Rinse hold is selected
Ⓛ On: the door can be opened; flashing (after programme starts): the door was not closed correctly
☞ On: childproof lock is activated; flashing: the setting was changed → page 6

90 °C: Default washing temperature ; Cold °C: cold wash
800 ⊗: Default spin speed of the programme
...: Special symbol → page 5 <b>Special symbol</b>
1:30: Expected programme duration
5.2 kg: Recommended max. load
24 h: Select Finish in time
End: End of programme
E: iB: Fault displays → page 12
YES, n0: "YES" if the door can be opened or "NO" if it cannot be opened during "Pause" period

## Option buttons

You can change the default spin speed and temperature even while the selected programme is running.

## Washing temperature °C

You can change the indicated washing temperature. The maximum washing temperature which can be selected depends on the chosen programme. → page 7

## Spin speed ⊗

You can change the indicated spin speed. The maximum spin speed which can be selected depends on the chosen programme. The default spin speed cannot be changed during the **Single Wash** programme. You can also set "..." → **Special symbol**

## Finish in time ⌚

Before a programme starts, you can specify by how many hours later the programme is to be ended.  
 - Press **Finish in** button until the required number of hours is shown. The Finish in time can be set in hour increments up to a maximum of 24 hours.  
 - Press **Start/Reload**, the Finish in time starts counting down.  
 You can pause the programme to open the door even if the Finish in time is active.

## Special symbol ...

- Except for the **Spin/Empty** and **Single Wash** programmes, press the ⊗ button to set "..." (Rinse hold); the load is held in the final rinsing water. When the programme has ended, "..." appear. Select programme **Spin/Empty** or directly press ⊗ to select spin speed to spin the laundry.  
 - When the **Spin/Empty** programme is selected, press the ⊗ button to set "..." the programme is then defined as **Empty**; If "..." is not set, the programme is defined as **Spin**.  
 - When the **Empty** and **Single Wash** programmes have ended, "..." and "0" appears on the display field, it means the whole process is finished.

# Additional functions

## Buttons for additional functions

In addition to the programme if required

**加快洗 Speed wash**  
 Shorten the washing time. For slightly soiled items. If the function is selected, programme duration and max. load will be changed.

**加漂洗 Rinse plus**  
 Additional rinse cycles, extended washing time. For areas with very soft water or for further improvement of the rinsing result.

**超净洗 Intensive**  
 Extend the washing time for a more intensive washing of heavily soiled items.

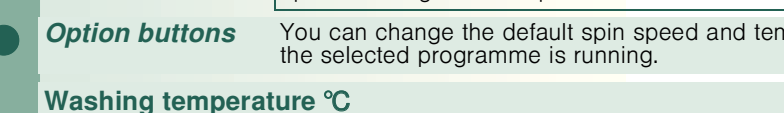
Additional functions can be combined. The indicator lights of the buttons come on, if additional functions are active. Switching off the additional function: Touch the button again. The indicator light goes out.

## Childproof lock

Programme will not be changed by accidental operation.  
 - Activating the childproof lock: After the programme starts, press **Start/Reload** and hold down for 5 seconds until the ☞ symbol is displayed. The ☞ symbol flashes if any setting is inadvertently changed.  
 - Deactivating the childproof lock: Press **Start/Reload** and hold down for 5 seconds until the ☞ symbol goes out.

## Signal

1. Start the signal mode  
 2. Set volume for...  
 Button feedback signals  
 Information signals



## Sleep mode

If you do not operate the machine for about five minutes after selecting the programme or programme end, the display information goes out to save power.  
 - If required, press any button, and all information will be displayed again.

# Programme overview

Programmes	°C	max. load (kg)	Type of laundry
混合洗 Mix	cold - 40	3.0/2.6	Textiles made of cotton and easy-care textiles
棉标准 Cotton	cold - 90	5.2/4.5	Different types of textiles which can be washed together
棉预洗 Prewash	cold - 90	5.2/4.5	Hard-wearing textiles made of cotton or linen
化纤洗 Easy care	cold - 60	2.6/2.0	Hard-wearing textiles, heat-resistant textiles made of cotton or linen
丝绸 Silk	cold - 40	2.0/1.5	Easy Care textiles made of cotton, linen, synthetic fibres or blended fabrics
羊毛 Wool	cold - 40	2.0/1.5	For delicate, washable textiles, e.g. made of silk, satin, synthetic fibres or blended fabrics
超快 Super 15/30'	cold - 40	3.5/3.0	Hand- or machine-washable wool or wool-rich textiles
运动装 Sportswear	cold - 40	2.0	Hard-wearing textiles made of cotton or linen, short programme
牛仔装 Denim	cold - 40	2.6/2.0	Sports wear made of synthetic fabrics
户外装 Outdoor	cold - 40	2.0	Dark easy-care textiles
衬衫 Shirts	cold - 60	2.0	Especially for outer wear made of cotton or synthetic fibres
棉超净 Intensive	cold - 60	5.2/4.5	Non-iron shirts made of cotton, linen, synthetic fibres or blended fabrics
单漂洗 Single wash	cold - 30	3.5/2.0	Energy-intensive programme for heat-resistant textiles
单漂洗 Single rinse			Dark easy-care textiles
脱水 / 排水 Spin/Empty			Single spin programme or single empty programme → page 5 <b>Special symbol</b>

# Programme overview

Programmes	°C	max. load (kg)	Type of laundry
混合洗 Mix	cold - 40	3.0/2.6	Textiles made of cotton and easy-care textiles
棉标准 Cotton	cold - 90	5.2/4.5	Different types of textiles which can be washed together
棉预洗 Prewash	cold - 90	5.2/4.5	Hard-wearing textiles made of cotton or linen
化纤洗 Easy care	cold - 60	2.6/2.0	Hard-wearing textiles, heat-resistant textiles made of cotton or linen
丝绸 Silk	cold - 40	2.0/1.5	Easy Care textiles made of cotton, linen, synthetic fibres or blended fabrics
羊毛 Wool	cold - 40	2.0/1.5	For delicate, washable textiles, e.g. made of silk, satin, synthetic fibres or blended fabrics
超快 Super 15/30'	cold - 40	3.5/3.0	Hand- or machine-washable wool or wool-rich textiles
运动装 Sportswear	cold - 40	2.0	Hard-wearing textiles made of cotton or linen, short programme
牛仔装 Denim	cold - 40	2.6/2.0	Sports wear made of synthetic fabrics
户外装 Outdoor	cold - 40	2.0	Dark easy-care textiles
衬衫 Shirts	cold - 60	2.0	Especially for outer wear made of cotton or synthetic fibres
棉超净 Intensive	cold - 60	5.2/4.5	Non-iron shirts made of cotton, linen, synthetic fibres or blended fabrics
单漂洗 Single wash	cold - 30	3.5/2.0	Energy-intensive programme for heat-resistant textiles
单漂洗 Single rinse			Dark easy-care textiles
脱水 / 排水 Spin/Empty			Single spin programme or single empty programme → page 5 <b>Special symbol</b>

Programmes	°C	max. load (kg)	Type of laundry
混合洗 Mix	cold - 40	3.0/2.6	Textiles made of cotton and easy-care textiles
棉标准 Cotton	cold - 90	5.2/4.5	Different types of textiles which can be washed together
棉预洗 Prewash	cold - 90	5.2/4.5	Hard-wearing textiles made of cotton or linen
化纤洗 Easy care	cold - 60	2.6/2.0	Hard-wearing textiles, heat-resistant textiles made of cotton or linen
丝绸 Silk	cold - 40	2.0/1.5	Easy Care textiles made of cotton, linen, synthetic fibres or blended fabrics
羊毛 Wool	cold - 40	2.0/1.5	For delicate, washable textiles, e.g. made of silk, satin, synthetic fibres or blended fabrics
超快 Super 15/30'	cold - 40	3.5/3.0	Hand- or machine-washable wool or wool-rich textiles
运动装 Sportswear	cold - 40	2.0	Hard-wearing textiles made of cotton or linen, short programme
牛仔装 Denim	cold - 40	2.6/2.0	Sports wear made of synthetic fabrics
户外装 Outdoor	cold - 40	2.0	Dark easy-care textiles
衬衫 Shirts	cold - 60	2.0	Especially for outer wear made of cotton or synthetic fibres
棉超净 Intensive	cold - 60	5.2/4.5	Non-iron shirts made of cotton, linen, synthetic fibres or blended fabrics
单漂洗 Single wash	cold - 30	3.5/2.0	Energy-intensive programme for heat-resistant textiles
单漂洗 Single rinse			Dark easy-care textiles
脱水 / 排水 Spin/Empty			Single spin programme or single empty programme → page 5 <b>Special symbol</b>

\* The max. load are values when the programme is selected and the default addition function **Speed Wash** is deactivated. / values of left side are for WAX series; / values of right side are WL series.  
 \*\* obligatory: O: optional.  
 i The programme duration deviate from the indicated values depending on water pressure, hardness, and inlet temperature, ambient temperature, type, amount and soiling of the laundry, detergent used, fluctuations in the power supply and selected additional functions.

# Safety instructions

- Read and follow the operating and installation instructions and all other information enclosed with the washing machine.
  - Retain documents for subsequent use.
- Risk of electric shock**
- Never pull out the mains plug by pulling on the power cord.
  - Never insert/pull out the mains plug with wet hands.
  - Make sure the cable is plugged into a socket which is correctly connected to a reliable earth connection.
- Risk of death**
- Appliances which have reached the end of their service life:
- Pull out the mains plug.
  - Sever the power cord and discard together with the plug.
  - Destroy the lock on the washing machine door.
- This will prevent children from locking themselves in and putting their lives at risk.
- Risk of suffocation**
- Keep packaging, plastic film and packaging parts out of the reach of children.
- Risk of poisoning**
- Keep detergents and care products out of the reach of children.
- Risk of explosion**
- Caused by detergents containing solvents, e.g. stain remover. Items of washing pre-treated with solvent naphtha may cause an explosion after being loaded into the washing machine. Rinse such items thoroughly by hand before putting them in the washing machine.
- Risk of injury**
- Washing machine door may become very hot.
  - Take care when draining hot detergent solution.
  - Do not climb on the washing machine.
  - Do not lean on the washing machine door when it is open.
  - Make sure that the pump cap is screwed on when the machine is running, avoid water leakage and touching the components of pump when they are in operation.

# Cleaning and care

- Clean machine housing, control panel**
- Wipe with a soft, damp cloth.
  - Do not use abrasive detergents.
  - Immediately remove washing and cleaning agent residue.
  - Do not clean the appliance with a water jet.
- Clean the detergent drawer ...**
- ... if it contains detergent or fabric softener residue.
1. Pull out, depress the insert and remove the drawer completely.
  2. Remove insert: Press the insert upwards with your finger.
  3. Clean the detergent dispenser and the insert with water and a brush.
  4. Refit the insert and secure in place.
  5. Insert the detergent drawer.
- Leave the detergent drawer open so that residual water can evaporate.
- Drum**
- Leave the washing machine door open so that the drum can dry.
- Rust stains – use chlorine-free cleaning agent, not steel wool.

# Cleaning and care

- Detergent solution pump**
- Set the programme selector to **Off**, pull out the mains plug.
1. Open and remove the maintenance cover.
  2. Carefully unscrew the pump cover - do not remove it completely.
  3. Let the water drain into a shallow container (let the remainder drip onto a floor cloth). Repeat the operation until there is no water left.
  4. Remove the pump cover. Remove foreign material/fluff from inside the pump.
  5. Clean the interior, pump cover thread and pump housing (fan impeller in the detergent solution pump must be able to rotate).
  6. Refit the pump cover and screw on tightly.
  7. Insert the maintenance cover and close it.
- To prevent unused detergent from flowing into the outlet during the next wash: pour 1 litre of water into dispenser **II** and start the **Spin/Empty** programme.

# Consumption values

Variants	WAX16260TI	WAX16268TI	WAX20268TITI	WLX16268TI
Energy efficiency grade	1	1	1	1
Power consumption (kWh/cycle)	0.88	0.88	0.88	0.85
Water consumption (L/cycle)	51	51	51	46
Rate of washing ability	1.03	1.03	1.03	1.03
Noise value				
Spinning noise value dB(A)	67	67	65	66
Washing noise value dB(A)	55	55	55	54

Energy consumption tested under standard programme **Intensive 60 °C** with additional function **Intensive** (do not select additional function **Speed Wash**) according to GB.

# Customer service

- Before calling customer service, please check whether you can eliminate the fault yourself → *page 12 What to do if...*
  - If you require advice, even during the warranty period, you will incur the costs for the callout of a technician.
  - When calling customer service, please give details of your address, telephone number, fault description, purchase date, product number (E-no.) and the production number (FD) of the appliance to prevent unnecessary callouts. This will save you additional costs.
- The number is shown on the rating plate which can be found on the frame of the open door and also on the rear of the appliance.
- Universal customer service number in China: 4008855888  
Free consultation hotline: 8008280088

# Technical specifications

WAX series: a= 600 mm  
b= 560 mm  
c= 850 mm

WLX series: a= 600 mm  
b= 400 mm  
c= 850 mm

Net weight 64 kg (WAX20268TI)  
60 kg (other variants)

# Scope of delivery

● Washing machine	1 x
● Operating instructions	1 x
● Installation instructions	1 x
● Warranty guide	1 x
● Cover cap	4 x
● Bottom cover	1 x
● Water inlet hose	1 x

# Fault displays

- E:17**
- Tap turned on?
  - Water inlet hose kinked or jammed?
  - Filter blocked? Clean filter → *Page 10*
  - Water pressure too low?
- E:18**
- Loose debris is blocking the pump, clean the pump → *Page 10*
  - Drainage hose blocked?

**Other displays** Switch off the appliance, wait 5 seconds and switch it back on. If the display appears again, call customer service.

# What to do if ...

- Water is running out.
  - Fit/refit drainage hose.
  - Tighten screw-fitting on the supply hose.
- Water not flowing in. Detergent not washed in.
  - **Start/Reload** not selected?
  - Tap not open?
  - Filter blocked? Clean filter → *Page 10*.
  - Water inlet hose kinked or jammed?
- Washing machine door cannot be opened.
  - Safety function active. Programme stopped?
  - Water in drum? Select **Spin/Empty** programme.
- Programme does not start.
  - **Start/Reload** not selected or Finish in time is selected?
  - The symbol flashes, washing machine door not closed properly.
- Detergent solution is not drained.
  - Clean detergent solution pump → *Page 10*.
  - Clean drainage hose.
- Additional function could not be activated for the selected programme.
  - Can the additional function be selected? → *Page 7*, programme overview.
- Water not visible in the drum.
  - Not a fault - water below the visible area.
- Spin cycle actuated several times.
  - Not a fault - unbalanced load detection system adjusts imbalance.
- Detergent in chamber **I** is not washed away.
  - **Prewash** programme not selected?
- Detergent residue in the detergent dispenser
  - Detergent is damp or lumpy, clean the detergent dispenser → *Page 9*.
  - Use the dosing aid for liquid detergent.
- Foam is emerging from the detergent drawer. The symbol flashes
  - Too much detergent used?
  - Mix 1 tablespoon of fabric conditioner with ½ a litre of water and pour into dispenser **II** in the detergent drawer.
  - Reduce detergent dosage for the next wash cycle.
- Excessive noise, vibration and "wandering" during spin cycle.
  - Appliance feet fixed?
  - Secure appliance feet → *Installation instructions*.
  - Transportation bolt removed?
  - Remove transportation bolt → *Installation instructions*.
- Display panel/indicator lights do not function while the appliance is running.
  - Power failure?
  - Circuit breaker tripped? Reset the circuit breaker/change the fuse.
  - If the fault occurs repeatedly, contact customer service.
- Programme sequence longer than usual
  - Not a fault-unbalanced load detection system is adjusting the imbalance by repeatedly distributing the laundry.
  - Not a fault-foam detection system active.
- Detergent residues on the laundry
  - Occasionally, phosphate-free detergents contain water-insoluble residues.
  - Select **Single rinse** or brush the laundry after washing.
- Washing result not satisfactory
  - Soiling is greater than expected? Select a suitable programme.
  - Detergent is underdosed?
- If you cannot correct a fault yourself or a repair is required:
  - Set the programme selector to **Off** and pull the mains plug out of the socket.
  - Turn off the tap and call customer service.



en Instruction manual

# Important information

- Preparing/Protecting the laundry and the machine**
- Brush sand out of pockets and cuffs/collars.
  - Check for metal items (paperclips, etc.).
  - Trousers, knitwear and knitted textiles, e.g. jersey garments, T-shirts or sweatshirts should be turned inside out.
  - Wash delicates in a net/bag (tights, curtains, underwired bras).
  - Close zips, fasten pillow cases/cushion covers.
  - Remove curtain runners or tie up in a net/bag.

# Laundry with different levels of soiling

Light	Wash new items separately. Do not prewash.
Heavy	If required, pre-treat stains. Select <b>Prewash</b> programme. Load less laundry. Select <b>Prewash</b> programme.

# Before washing for the first time

Do not put any laundry in the washing machine. Turn on the tap, pour ½ a measuring cup of detergent into dispenser **II**. Set the **Easy Care** 40 °C programme and select **Start/Reload**. At the end of the programme, set the programme selector to **Off**.

# Your washing machine

**Congratulations** – you have opted for a modern, high-quality domestic appliance manufactured by Bosch. The washing machine is distinguished by its economical use of water and energy .

Each appliance which leaves our factory is inspected thoroughly to ensure that it functions properly and is in perfect condition.



– Please read the operating instructions and installation instructions supplied before switching on the washing machine.



- Any failure and losses caused by ignoring the above mentioned items, including cautions in the instructions, are not covered by our warranty and liability.
- Please keep all documents in a safe place for further reference. In cases of doubt, please contact customer service.
- Follow the safety instructions on Page 8.
- Contents of this instruction could be changed without written notice.

## Contents

	Page
Intended use .....	1
Preparation .....	2
Washing .....	3/4
Display information, Option buttons .....	5
Additional functions .....	6
Programme overview.....	7
Safety instructions.....	8
Important information .....	8
Cleaning and care .....	9/10
Consumption values.....	11
Scope of delivery .....	11
Customer service .....	12
Technical specification.....	12
Fault display .....	12
What to do if.....	13



### Protection of the environment/Conservation tips

- Load the maximum amount of laundry for the particular programme.
- Wash normally soiled laundry without prewash.
- Select **Intensive 60 °C** with additional function **Intensive** (do not select additional function **Speed Wash**), to achieve a good cleaning result with significantly lower energy consumption.
- Dose detergent according to the manufacturer's instructions and water hardness.
- If the laundry is to be subsequently dried in a tumble dryer, select a spin speed as specified by the dryer manufacturer.

## Intended use

- For domestic use only.
  - For washing machine-washable fabrics in a detergent solution.
  - To be operated with cold mains water and commercially available detergents and care products which are suitable for use in washing machines.
  - Operating conditions:
    - ambient temperature 0-40 °C
    - relative air humidity: under 95% (tested at 25 °C)
- Do not leave children unattended near the washing machine.
- Keep pets away from the washing machine.
- The washing machine is not to be used by children or persons not familiar with the operating instructions.
- Install and operate the washing machine in a room with a drain.
- In order to ensure your safety, you must plug the cable into a socket which is correctly connected to a reliable earth connection.

## Preparation



Correct installation according to separate installation instructions. Remove the transport bolts and install the bottom cover before using the appliance for the first time.



### Check the machine

- Never switch on a damaged machine.
- Inform your after-sales service.

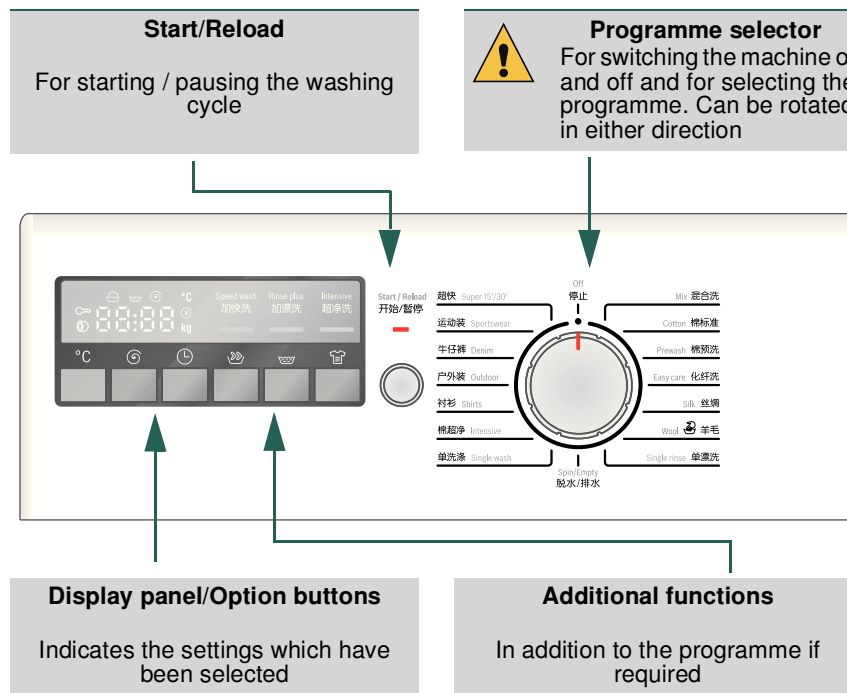
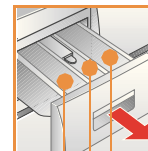


### Insert the mains plug

- With dry hands only. Only hold the plug by the plug body.



### Turn on the tap



**Compartment II:** Detergent for the main wash, water softener, bleach, stain remover

**Compartment ☼ :** Fabric softener, impregnating agent, starch

**Compartment I:** Detergent for pre-wash

The machine was tested before leaving the factory. To remove any water left over from testing procedures, the first washing cycle should be carried out **without** any laundry in the machine → Page 8.

## Sort and load the washing

1

Follow manufacturer's care information.

Sort according to the information on the care labels.  
Sort according to type, colour, level of soiling and temperature.

Do not exceed the maximum load → Page 7.

Observe the instructions in the Important information section → Page 8!

Load both large and small items of washing together.

## Close the washing machine door

2

Take care not to trap any items of clothing between the loading door and rubber seal.

## Add detergent and care product

3

Add the appropriate amount according to:  
Amount of laundry, level of soiling, water hardness (ask your water supply company) and manufacturer's instructions.

Pour liquid detergent into the appropriate dispenser.

During operation: take care when opening the detergent drawer.



Dilute viscous fabric softener and fabric conditioner with water.  
This prevents blockages.

## Set the programme

4

For detailed programme information, see programme overview → page 7.

For option buttons → page 5.

## Select additional functions

5

For additional functions → page 6.

## Press the "Start/Reload" button

6

The programme starts.

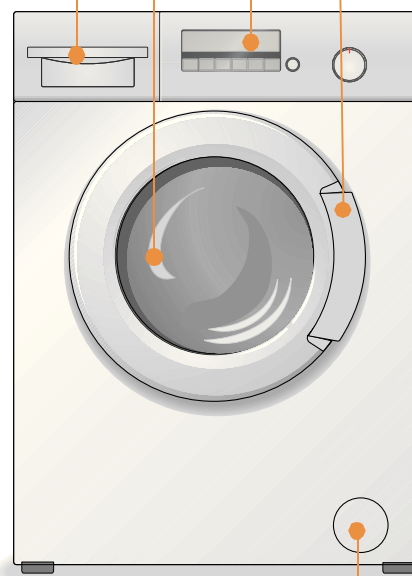
# Washing

Detergent drawer with dispenser II, ⌘, I

Drum

Control panel

Door handle



Maintenance cover

10

## Removing the laundry

Open the washing machine door and remove the laundry.  
Leave the door and detergent drawer open to allow the interior of the machine to dry.

9

## Turn off the tap

8

## Switch off

- If the childproof lock is active, deactivate it → page 6.
- Set Programme selector to **Off**.

7

## Programme ended when ...

- "End" and "⌘" appear on the display field, and the buzzer sounds.
- "..." appear on the display field, and the buzzer sounds. → page 5 **Special symbol**

## Changing the programme ...

If you have accidentally selected the wrong programme:

- If the childproof lock is active, deactivate it → page 6.
- Turn the programme selector to a newly selected programme.
- If required, select additional functions.
- Press the **Start/Reload** button, new programme starts.

## Pausing a programme ...

If you would like to pause a programme while it is running without changing the sequence:

- If the childproof lock is active, deactivate it → page 6.
- Press the **Start/Reload** button:
  - When "⌘" and "⌘" flash on the display field, wait for at least 2 minutes.
  - When "UE5" and "⌘" appear, the door can be opened. If required, add/remove the laundry.
  - If "⌘" appears for a prolonged period, the door cannot be opened for reasons of your safety.
- Press the **Start/Reload** button to continue the programme.

## ... or terminate the programme

If you would like to terminate a programme:

- If the childproof lock is active, deactivate it → page 6.
- Turn the programme selector to **Spin/Empty**.
- Press the **Start/Reload** button.
- Remove the laundry after the spinning cycle.

# Display information, Option buttons

## Display Information



for programme status

	wash: Not on if <b>Single Rinse</b> or <b>Spin/Empty</b> is selected flashing; too much detergent used → <i>page 13</i>
	Rinse: Not on if <b>Spin/Empty</b> is selected
	Spin: Not on if “ - - - ” Rinse hold is selected
	On: the door can be opened; flashing (after programme starts): the door was not closed correctly
	On: childproof lock is activated; flashing: the setting was changed → <i>page 6</i>



Display Information  
Display information depends on the chosen programme

90 °C	: Default washing temperature ; Cold °C : cold wash
800	⊖: Default spin speed of the programme
- - -	: Special symbol → <i>page 5</i> <b>Special symbol</b>
1:30	: Expected programme duration
5.2 kg	: Recommended max. load
24 h	: Select Finish in time
End	: End of programme
E: 18	: Fault displays → <i>page 12</i>
YES, NO	: “YES” if the door can be opened or “NO” if it cannot be opened during “Pause” period

## Option buttons

You can change the default spin speed and temperature even while the selected programme is running.

## Washing temperature °C

You can change the indicated washing temperature. The maximum washing temperature which can be selected depends on the chosen programme. → *page 7*

## Spin speed ⊖

You can change the indicated spin speed. The maximum spin speed which can be selected depends on the chosen programme. The default spin speed cannot be changed during the

**Single Wash** programme. You can also set “ - - - ” → **Special symbol**

## Finish in time ⌚

Before a programme starts, you can specify by how many hours later the programme is to be ended.

- Press **Finish in** button until the required number of hours is shown. The Finish in time can be set in hour increments up to a maximum of 24 hours.
- Press **Start/Reload**, the Finish in time starts counting down.

You can pause the programme to open the door even if the Finish in time is active.

## Special symbol - - -

- Except for the **Spin/Empty** and **Single Wash** programmes, press the ⊖ button to set “ - - - ” (Rinse hold); the load is held in the final rinsing water. When the programme has ended, “ - - - ” appear. Select programme **Spin/Empty** or directly press ⊖ to select spin speed to spin the laundry.
- When the **Spin/Empty** programme is selected, press the ⊖ button to set “ - - - ”, the programme is then defined as **Empty**; If “ - - - ” is not set, the programme is defined as **Spin**.
- When the **Empty** and **Single Wash** programmes have ended, - - - and “Ⓢ” appears on the display field, it means the whole process is finished.

# Additional functions

## Buttons for additional functions

In addition to the programme if required

### 加快洗 Speed wash

Shorten the washing time. For slightly soiled items. If the function is selected, programme duration and max. load will be changed.

### 加漂洗 Rinse plus

Additional rinse cycles, extended washing time. For areas with very soft water or for further improvement of the rinsing result.

### 超净洗 Intensive

Extend the washing time for a more intensive washing of heavily soiled items.

Additional functions can be combined.

The indicator lights of the buttons come on, if additional functions are active.

Switching off the additional function: Touch the button again. The indicator light goes out.

## Childproof lock

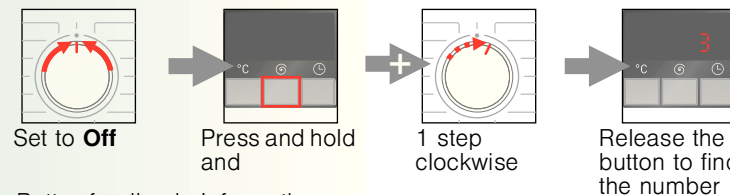
Programme will not be changed by accidental operation.

- Activating the childproof lock: After the programme starts, press **Start/Reload** and hold down for 5 seconds until the symbol is displayed. The symbol flashes if any setting is inadvertently changed.
- Deactivating the childproof lock: Press **Start/Reload** and hold down for 5 seconds until the symbol goes out.
- If the programme is ended or any setting is changed, deactivate the childproof lock.
- If the programme is changed while the childproof lock is activated, the symbol flashes, the programme which is running will continue.
- If the childproof lock is deactivated while the programme selector is in a different position from when the childproof lock was activated, the programme which is currently running be halted.



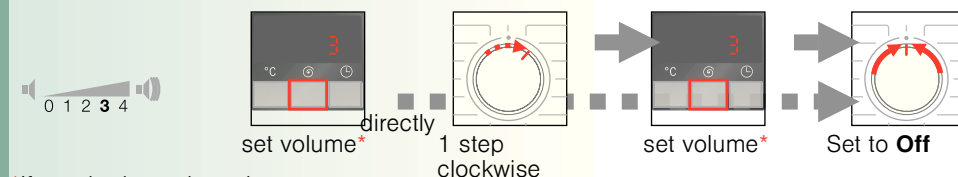
## Signal

1. Start the signal mode



2. Set volume for...

Button feedback signals Information signals



\*If required, set the volume repeatedly.

## Sleep mode

If you do not operate the machine for about five minutes after selecting the programme or programme end, the display information goes out to save power.

- If required, press any button, and all information will be displayed again.

# Programme overview

(see also the information on page 5/6)

Programmes	°C	max. load (kg)*	Type of laundry	Compartment			Speed Wash	Rinse Plus	Intensive
					⊗	I			
混合洗 Mix	cold - 40	3.0/2.6	Textiles made of cotton and easy-care textiles Different types of textiles which can be washed together	●	○		✓	✓	✓
棉标准 Cotton	cold - 90	5.2/4.5	Hard-wearing textiles made of cotton or linen	●	○		✓	✓	✓
棉预洗 Prewash	cold - 90	5.2/4.5	Hard-wearing textiles, heat-resistant textiles made of cotton or linen	●	○	●	✓	✓	✓
化纤洗 Easy care	cold - 60	2.6/2.0	Easy-Care textiles made of cotton, linen, synthetic fibres or blended fabrics	●	○		✓	✓	✓
丝绸 Silk	cold - 40	2.0/1.5	For delicate, washable textiles, e.g. made of silk, satin, synthetic fibres or blended fabrics	●	○		✓	✓	✓
羊毛  Wool	cold - 40	2.0/1.5	Hand- or machine-washable wool or wool-rich textiles	●	○				
超快 Super 15'/30'	cold - 40	3.5/3.0	Hard-wearing textiles made of cotton or linen, short programme	●	○		✓		
运动装 Sportswear	cold - 40	2.0	Sports wear made of synthetic fabrics	●	○		✓	✓	✓
牛仔褲 Denim	cold - 40	2.6/2.0	Dark easy-care textiles	●	○		✓	✓	✓
户外装 Outdoor	cold - 40	2.0	Especially for outer wear made of cotton or synthetic fibres	●	○		✓	✓	✓
衬衫 Shirts	cold - 60	2.0	Non-iron shirts made of cotton, linen, synthetics fibres or blended fabrics	●	○		✓	✓	✓
棉超净 Intensive	cold - 60	5.2/4.5	Energy-intensive programme for heat-resistant textiles	●	○		✓	✓	✓
单洗涤剂 Single wash	cold - 30	3.5/2.0		●	○				
单漂洗 Single rinse									✓
脱水 / 排水 Spin/Empty			Single spin programme or single empty programme → page 5 <b>Special sym-bol</b>						

\* The max. load are values when the programme is selected and the default addition function **Speed Wash** is deactivated. / values of left side are for WAX series; / values of right side are WLX series.

\*\* : obligatory; ○ : optional.

i The programme duration deviate from the indicated values depending on water pressure, hardness, and inlet temperature, ambiente temperature, type, amount and soiling of the laundry, detergent used, fluctuations in the power supply and selected additional functions.

BSW Household Appliances Co., Ltd.  
Plot No. 22-23 National Hi-Tech Industrial Development Zone 214028,  
Wuxi, Jiangsu Province, P. R. China

WAX16260TI WAX16268TI  
WAX20268TI WLX16268TI

9000372400  
0912



## Safety instructions

- Read and follow the operating and installation instructions and all other information enclosed with the washing machine.
- Retain documents for subsequent use.

### Risk of electric shock

- Never pull out the mains plug by pulling on the power cord.
- Never insert/pull out the mains plug with wet hands.
- Make sure the cable is plugged into a socket which is correctly connected to a reliable earth connection.

### Risk of death

- Appliances which have reached the end of their service life:
- Pull out the mains plug.
  - Sever the power cord and discard together with the plug.
  - Destroy the lock on the washing machine door. This will prevent children from locking themselves in and putting their lives at risk.

### Risk of suffocation

- Keep packaging, plastic film and packaging parts out of the reach of children.

### Risk of poisoning

- Keep detergents and care products out of the reach of children.

### Risk of explosion

- Caused by detergents containing solvents, e.g. stain remover. Items of washing pre-treated with solvent naphtha may cause an explosion after being loaded into the washing machine. Rinse such items thoroughly by hand before putting them in the washing machine.

### Risk of injury

- Washing machine door may become very hot.
- Take care when draining hot detergent solution.
- Do not climb on the washing machine.
- Do not lean on the washing machine door when it is open.
- Make sure that the pump cap is screwed on when the machine is running, avoid water leakage and touching the components of pump when they are in operation.



## Important information



### Preparing/Protecting the laundry and the machine

- Brush sand out of pockets and cuffs/collars.
- Check for metal items (paperclips, etc.).
- Trousers, knitwear and knitted textiles, e.g. jersey garments, T-shirts or sweatshirts should be turned inside out.
- Wash delicates in a net/bag (tights, curtains, underwired bras).
- Close zips, fasten pillow cases/cushion covers.
- Remove curtain runners or tie up in a net/bag.



### Laundry with different levels of soiling

Light



Wash new items separately.

Do not prewash.

Heavy

If required, pre-treat stains. Select **Prewash** programme.

Load less laundry. Select **Prewash** programme.



### Before washing for the first time

Do not put any laundry in the washing machine. Turn on the tap, pour ½ a measuring cup of detergent into dispenser II. Set the **Easy Care** 40 °C programme and select **Start/Reload**. At the end of the programme, set the programme selector to **Off**.

## Cleaning and care



- Risk of electric shock. Pull out the mains plug.
- Risk of explosion. No solvents.



### Clean machine housing, control panel

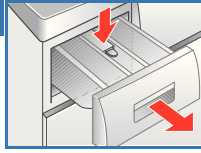
- Wipe with a soft, damp cloth.
- Do not use abrasive detergents.
- Immediately remove washing and cleaning agent residue.
- Do not clean the appliance with a water jet.



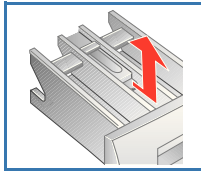
### Clean the detergent drawer ...

... if it contains detergent or fabric softener residue.

1. Pull out, depress the insert and remove the drawer completely.



2. Remove insert: Press the insert upwards with your finger.



3. Clean the detergent dispenser and the insert with water and a brush.
4. Refit the insert and secure in place.
5. Insert the detergent drawer.



Leave the detergent drawer open so that residual water can evaporate.



### Drum

Leave the washing machine door open so that the drum can dry.  
Rust stains – use chlorine-free cleaning agent, not steel wool.



### Descaling

*No laundry in the machine!*

This should be not be necessary if the detergent is dispensed correctly. However, follow the instructions of the descaler manufacturer.



### Frost protection

If the washing machine is located in a room which is exposed to freezing temperatures, any residual water in both the pump and the water inlet hose must be drained every time after the machine is used.

- Draining the pump → Page 10 Detergent solution pump
- Draining the water inlet hose:

1. Turn the tap off.
2. Unscrew the hose from the tap and the rear of the appliance, drain out the water left inside the inlet hose.
3. Before the next wash, screw the hose back on and check for leaks.

# Cleaning and care

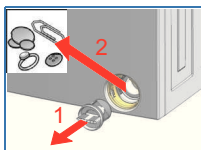
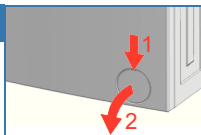


- Risk of scalding. Allow detergent solution to cool down.
- Turn off the tap.

## Detergent solution pump

- Set the programme selector to **Off**, pull out the mains plug.

1. Open and remove the maintenance cover.
2. Carefully unscrew the pump cover - do not remove it completely.
3. Let the water drain into a shallow container (let the remainder drip onto a floor cloth). Repeat the operation until there is no water left.
4. Remove the pump cover. Remove foreign material/fluff from inside the pump.
5. Clean the interior, pump cover thread and pump housing (fan impeller in the detergent solution pump must be able to rotate).
6. Refit the pump cover and screw on tightly.
7. Insert the maintenance cover and close it.



To prevent unused detergent from flowing into the outlet during the next wash: pour 1 litre of water into dispenser **II** and start the **Spin/Empty** programme.

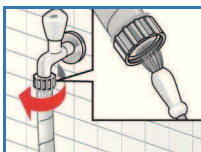
## Filter in the water inlet hose

### Reduce the water pressure in the supply hose:

1. Turn off the tap.
2. Select any programme (except **Spin/Empty**).
3. Press **Start/Reload**. Leave programme running for approx. 40 seconds.
4. Set the programme selector to **Off**. Pull out the mains plug.

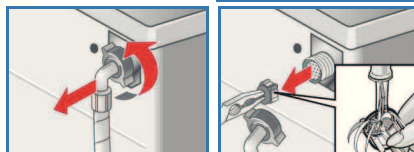
### Clean the filter:

1. Remove the hose from the tap. Clean the filter with a small brush.



or

Remove the hose from the rear of the appliance. Remove filter with pliers and clean.



2. Reconnect the hose and check for leaks.

# Consumption values

Variants	WAX16260TI	WAX16268TI	WAX20268TITI	WLX16268TI
● Energy efficiency grade	1	1	1	1
● Power consumption (kWh/cycle)	0.88	0.88	0.88	0.85
Water consumption (L/cycle)	51	51	51	46
Rate of washing ability	1.03	1.03	1.03	1.03
● Noise value				
Spinning noise value dB(A)	67	67	65	66
Washing noise value dB(A)	55	55	55	54

Energy consumption tested under standard programme **Intensive 60 °C** with additional function **Intensive** (do not select additional function **Speed Wash**) according to GB.

# Scope of delivery

● Washing machine	1 x
● Operating instructions	1 x
● Installation instructions	1 x
● Warranty guide	1 x
● Cover cap	4 x
● Bottom cover	1 x
● Water inlet hose	1 x

## Customer service

- Before calling customer service, please check whether you can eliminate the fault yourself → page 12 *What to do if...*
- If you require advice, even during the warranty period, you will incur the costs for the callout of a technician.
- When calling customer service, please give details of your address, telephone number, fault description, purchase date, product number (E-no.) and the production number (FD) of the appliance to prevent unnecessary callouts. This will save you additional costs.

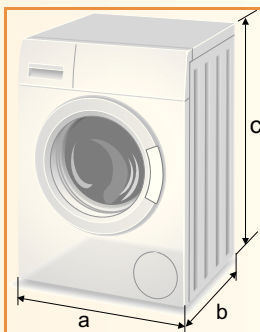
The number is shown on the rating plate which can be found on the frame of the open door and also on the rear of the appliance.

E-Nr. \_\_\_\_\_ FD \_\_\_\_\_

Universal customer service number in China: 4008855888

Free consultation hotline: 8008280088

## Technical specifications



WAX series: a= 600 mm  
b= 560 mm  
c= 850 mm

WLX series: a= 600 mm  
b= 400 mm  
c= 850 mm

Net weight 64 kg (WAX20268TI)  
60 kg (other variants)

## Fault displays

- E:17**
- Tap turned on?
  - Water inlet hose kinked or jammed?
  - Filter blocked? Clean filter → Page 10
  - Water pressure too low?

- E:18**
- Loose debris is blocking the pump, clean the pump → Page 10
  - Drainage hose blocked?

**Other displays** Switch off the appliance, wait 5 seconds and switch it back on. If the display appears again, call customer service.

## What to do if ...

- Water is running out.
  - Fit/refit drainage hose.
  - Tighten screw-fitting on the supply hose.
- Water not flowing in. Detergent not washed in.
  - **Start/Reload** not selected?
  - Tap not open?
  - Filter blocked? Clean filter → Page 10.
  - Water inlet hose kinked or jammed?
- Washing machine door cannot be opened.
  - Safety function active. Programme stopped?
  - Water in drum? Select **Spin/Empty** programme.
- Programme does not start.
  - **Start/Reload** not selected or Finish in time is selected?
  - The symbol flashes, washing machine door not closed properly.
- Detergent solution is not drained.
  - Clean detergent solution pump → Page 10.
  - Clean drainage hose.
- Additional function could not be activated for the selected programme.
  - Can the additional function be selected? → Page 7, programme overview.
- Water not visible in the drum.
  - Not a fault - water below the visible area.
- Spin cycle actuated several times.
  - Not a fault - unbalanced load detection system adjusts imbalance.
- Detergent in chamber I is not washed away.
  - **Prewash** programme not selected?
- Detergent residue in the detergent dispenser
  - Detergent is damp or lumpy, clean the detergent dispenser → Page 9.
  - Use the dosing aid for liquid detergent.
- Foam is emerging from the detergent drawer. The symbol flashes
  - Too much detergent used?
  - Mix 1 tablespoon of fabric conditioner with ½ a litre of water and pour into dispenser II in the detergent drawer.
  - Reduce detergent dosage for the next wash cycle.
- Excessive noise, vibration and “wandering” during spin cycle.
  - Appliance feet fixed?
  - Secure appliance feet → *Installation instructions*.
  - Transportation bolt removed?
  - Remove transportation bolt → *Installation instructions*.
- Display panel/indicator lights do not function while the appliance is running.
  - Power failure?
  - Circuit breaker tripped? Reset the circuit breaker/change the fuse.
  - If the fault occurs repeatedly, contact customer service.
- Programme sequence longer than usual
  - Not a fault-unbalanced load detection system is adjusting the imbalance by repeatedly distributing the laundry.
  - Not a fault-foam detection system active.
- Detergent residues on the laundry
  - Occasionally, phosphate-free detergents contain water-insoluble residues.
  - Select **Single rinse** or brush the laundry after washing.
- Washing result not satisfactory
  - Soiling is greater than expected? Select a suitable programme.
  - Detergent is underdosed?
- If you cannot correct a fault yourself or a repair is required:
  - Set the programme selector to **Off** and pull the mains plug out of the socket.
  - Turn off the tap and call customer service.



**Washing machine** XQG52-16260(WAX16260TI)  
XQG52-16268(WAX16268TI)  
XQG52-20268(WAX20268TI)  
XQG45-16268(WLX16268TI)



**BOSCH**