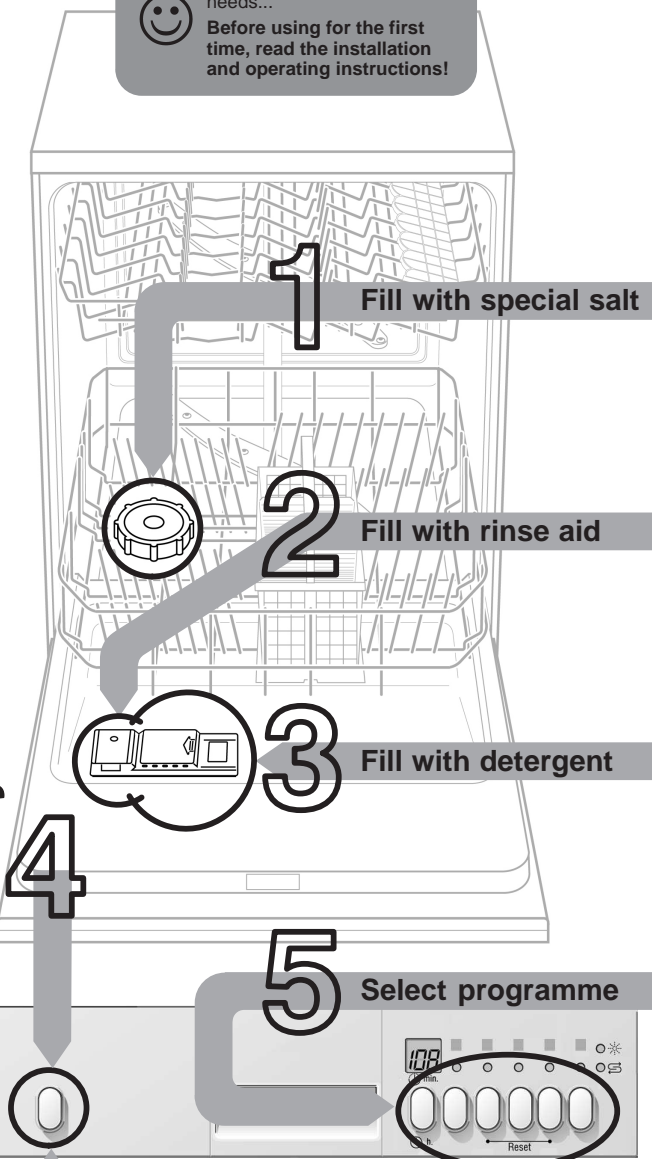




Brief and handy: everything your dishwasher needs...
Before using for the first time, read the installation and operating instructions!



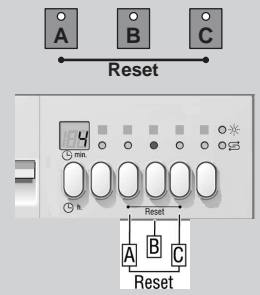
Set the water softening system *

Find out the **water hardness** at your water utility company and **enter**

Read off the setting ...

°dH	°fH	°Clarke	mmol/l	
0-6	0-11	0-8	0-1,1	0
7-8	12-15	9-10	1,2-1,4	1
9-10	16-17	11-12	1,5-1,8	2
11-12	18-21	13-15	1,9-2,1	3
13-16	22-29	16-20	2,2-2,9	4
17-21	30-37	21-26	3,0-3,7	5
22-30	38-54	27-38	3,8-5,4	6
31-50	55-89	39-62	5,5-8,9	7

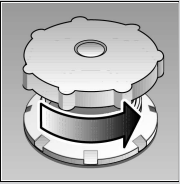
* only **before using** the dishwasher **for the first time** or if the **water hardness changes**



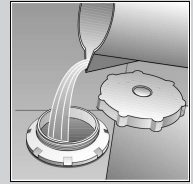
Quickly sorted ... and then set

- Hold down programme button **B** and switch on the main switch, then release the buttons. The display of button **B** and the number **4** set by the factory flash.
- Each time button **B** is depressed, the setting increases by one; if **7** has been reached, the display jumps back to **0**.
- Switch off the main switch. The selected setting has been stored in the appliance.

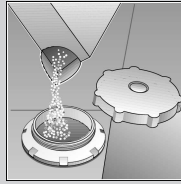
Dissolves limescale (not required for set value 0!)



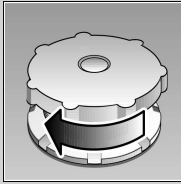
Unscrew the lid.



Only **before using** the dishwasher **for the first time** pour approx. **1 l / 1 1/4 pt** water into the salt opening.

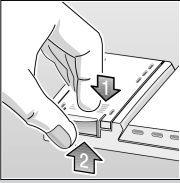


Pour in max. **1.5 kg / 3 lb 5 oz salt** (never detergent!)



Screw on the lid. Switch on dishwasher immediately.

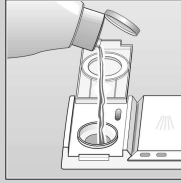
Everything is sparkling clean ...



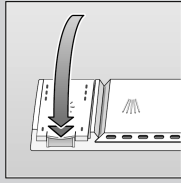
Press mark 1, lift up lid 2.



Refill whenever level indicator is light!

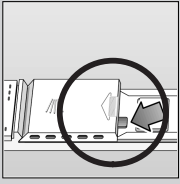


Pour in **rinse aid**.



Close the lid. **CLICK!**

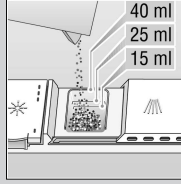
Very dirty dishes, a lot of detergent ...



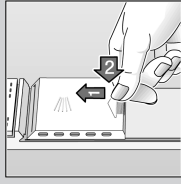
If required, open the lid (press the pin).



Warning, combination products are not suitable for all programmes, follow manufacturer's instructions.



Pour in **detergent**.



Push the lid shut, press. **PLOP!**

Quick, economical or intensive ...

Programme overview

This overview lists the max. possible number of programmes. The programmes supplied with your appliance are indicated on the fascia.

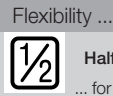
The programme data are values measured in the laboratory in compliance with Standard EN 50242. Deviations in practice are possible.

	Intensive 70°	Auto 55° /65°	Eco 50°	Gentle 40°	Quick 45°	Prerinse
Duration in minutes	138	85–140	140	75	30	19
Electricity consumption in kWh	1,65	1,10–1,60	1,05	0,90	0,80	0,05
Water consumption in litres	16	10–17	13	14	10	4,0
with Aquasensor	13	–	–	11	–	–

Additional programmes **

Time selection
...switches on as soon as you press the time selection button:
Alters the programme start in hourly steps

Saving time (VarioSpeed)
... is obtained by increased energy consumption at a constant cleaning and drying performance.



Half load
... for a few items, saves water, energy and time

** some models

Switch on appliance

Press On/Off switch, running time of the chosen programme appears

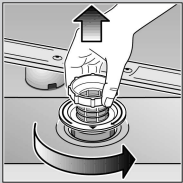
Switch off the appliance

When the display shows **0** (end of programme), press On/Off switch

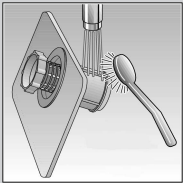
Maintenance and care

Filters

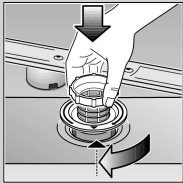
Check and, if required, clean:



Rotate filter cylinder, remove filter system



Rinse under running water



Insert

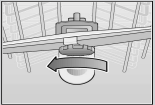
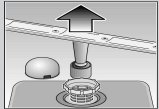


Screw on filter system. NOTE MARK!

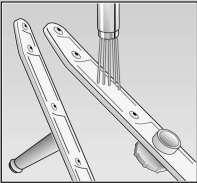
Spray arms

Remove blockages/deposits

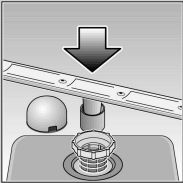
Pull up lower arm



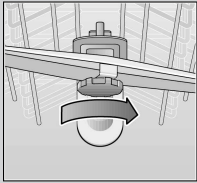
Unscrew upper arm



Clean under running water (if required, use a toothpick)



Insert lower arm



Screw on upper arm

Rectifying minor faults yourself ...

... as it is worth doing it yourself!

Fault	Possible causes	Remedial action
"Check water supply" display lights up	Supply fitting jammed or calcified	<ul style="list-style-type: none">▶ Open supply fitting.▶ 1. Unscrew water connection.▶ 2. Clean filter in the water connection.▶ 3. Flow rate must be min. 9 l/min. when water supply is open.▶ If the flow rate is less, replace the supply fitting.▶ Install supply hose without kinks.
Residual water in the appliance and "Check water supply" display lights up	Waste water pump blocked	<ul style="list-style-type: none">▶ Clean waste-water pump (see above).
	The programme has not yet ended	<ul style="list-style-type: none">▶ Close and switch on the appliance or terminate the programme (see Terminating the programme).
	Waste water hose is blocked or kinked	<ul style="list-style-type: none">▶ Install waste water hose without kinks.
Plastic/utensils discoloured	Too little detergent	<ul style="list-style-type: none">▶ Follow manufacturer's instructions (detergent).
	Discoloration caused by food colourings (tomato sauce)	<ul style="list-style-type: none">▶ Discoloration is harmless; subsequent rinse cycles will cause it to fade.
Rust on the cutlery	Cutlery not rust-resistant	<ul style="list-style-type: none">▶ Use dishwasher-proof cutlery.
	Hard knife blades are more susceptible	
	Extraneous rust	<ul style="list-style-type: none">▶ Never wash rusting parts in the appliance.

Fault

Possible causes

Remedial action

Utensils are not clean
Sand or gritty residue on the utensils



Utensils are situated close together or one above the other
Too little detergent
Unsuitable programme selected
Spray arm nozzles blocked
Filters dirty, not seated firmly
Spray arms blocked

- ▶ Separate the utensils, prevent contact points.
- ▶ Follow manufacturer's instructions (detergent).
- ▶ Select a more intensive programme.
- ▶ Clean the spray arms (see above).
- ▶ Clean the filters (see above).
- ▶ Arrange the utensils so that the spray arms can rotate freely.

Stains and streaks

Rinse-aid dosage too high/too low

- ▶ Streaks: reduce dosage.
- ▶ Water or limescale stains: increase dosage.

Milky deposits on the utensils (can be removed)

Water softening system incorrectly set;
No salt

- ▶ Correctly set water softening system.
- ▶ Refill with salt.

Milky deposits, glasses cloudy/tarnished (cannot be removed)

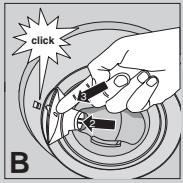
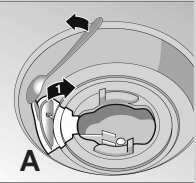
Glasses not dishwasher-proof

- ▶ Use dishwasher-proof glasses.
- ▶ Use a detergent suitable for glasses.

Waste water pump *

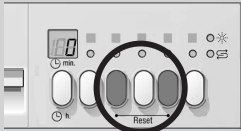
* some models

- Set main switch to OFF
- Scoop out any water
- Remove the filters
- Remove the cover (⇒A)
- Check the inner compartment for foreign objects and, if required, remove foreign objects
- Re-insert the cover (⇒B)
- Re-insert the filters and screw into position



Stopping the programme ...

Press and hold the two reset buttons simultaneously for approximately 3 seconds while the programme is running (RESET)



"0" appears

The programme will stop after 1 minute



Switch off the appliance.

Loading the dishwasher correctly ...

Arrange dishwasher-proof utensils (having removed any ash, wax, grease, ink, sticky labels; remove, large remnants of jam, dairy products and food) according to the operating instructions and check that the spray arms can rotate freely.

More information can be found in the operating instructions