



Brief and handy: everything your dishwasher needs ...  
**Before using for the first time, read the operating instructions!**

# 1

## Adjusting the water softening system\*

Ask your water supply company what the water hardness is and enter ...

Read off the correct setting for your water hardness ...

°dH	°fH	°Clarke	mmol/l	Setting
0-6	0-11	0-8	0-1,1	0
7-8	12-15	9-10	1,2-1,4	1
9-10	16-17	11-12	1,5-1,8	2
11-12	18-21	13-15	1,9-2,1	3
13-16	22-29	16-20	2,2-2,9	4
17-21	30-37	21-26	3,0-3,7	5
22-30	38-54	27-38	3,8-5,4	6
31-50	55-89	39-62	5,5-8,9	7



\* only before the first wash or if the water hardness has been changed

Quickly sorted ...

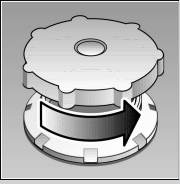
### How to adjust the water softening system

- Rotate the programme button from the 12 o'clock position by one notch to the left.
- Switch on the main switch and hold down for at least 3 seconds. The digital display indicates the current set hardness value (factory setting 4).
- Change the set value by rotating the programme selector (0-7).
- Switch off the main switch. The set value is saved.

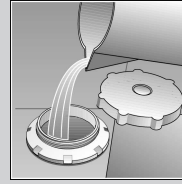
# 2

## Filling the salt dispenser

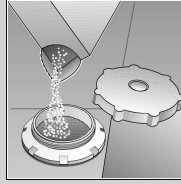
Dissolves limescale (not required for set value 0!)



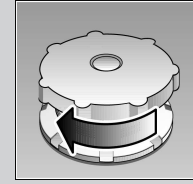
Unscrew the lid.



Only before using the dishwasher for the first time pour approx. 1 l / 1 1/4 pt water into the salt opening.



Pour in max. 1.5 kg / 3 lb 5 oz salt (never detergent!)



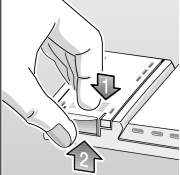
Screw on the lid. Switch on dishwasher immediately.

# 3

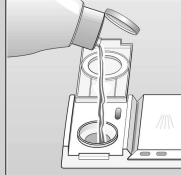
## Adding rinse aid

Everything is sparkling clean ...

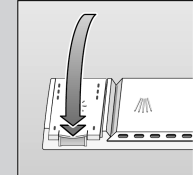
Refill whenever level indicator is light!



Press mark 1, lift up lid 2.



Pour in rinse aid.

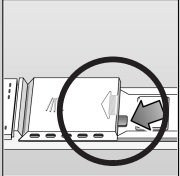


Close the lid. CLICK!

# 4

## Adding detergent

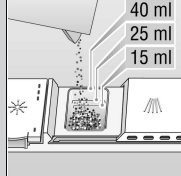
Very dirty dishes, a lot of detergent ...



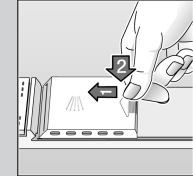
If required, open the lid (press the pin).



Warning, combination products are not suitable for all programmes, follow manufacturer's instructions.



Pour in detergent.



Push the lid shut, press. PLOP!

# 5

Turn on tap Water flows in ...

# 6

## Select programme

Quick, economical or intensive ...

### Overview of programmes

This overview indicates the max. possible number of programmes. The programmes which correspond to your appliance can be found on your appliance fascia.

The programme data are values measured in the laboratory in compliance with Standard EN 50242. Deviations in practice are possible.

	Intensive	Normal	Eco	Gentle	Quick	Prerinse
	70° 	65° 	50° 	40° 	45° 	
Duration in minutes	138	140	140	75	30	19
Power consumption in kWh	1,65	1,60	1,05	0,90	0,80	0,05
Water consumption in litres	16	16	13	14	10	4

## Additional programmes \*\*

Flexibility ...



### Soaking

... of utensils in the bottom basket, programme starts automatically, 5 g of extra detergent on the open door!



### Reduce/save time

... reduces washing time reduces drying time



### Half load

... for a few items, saves water, energy and time



### Extra dry

... improves the drying result by increased temperature in the final rinse (Please take care with delicate dishes)



### Time selection

...switches on as soon as you press the time selection button: Alters the programme start in hourly steps

\*\* some models

# 7

Switch on the appliance Here we go ...

Press main switch, running time of the selected programme is indicated.

# 9

Switch off the appliance Everything o.k. ...

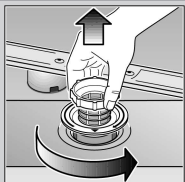
When the display is on 0 (end of programme), press the main switch.

# 8

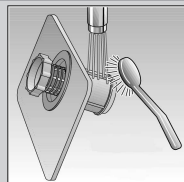
## Maintenance and care

### Filters

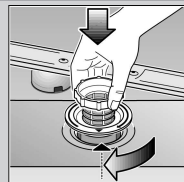
Check and, if required, clean:



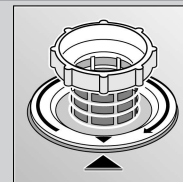
Rotate filter cylinder, remove filter system



Rinse under running water



Insert

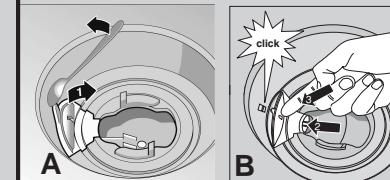


Screw on filter system. NOTE MARK!

## Waste water pump \*

\* some models

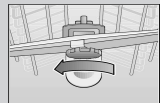
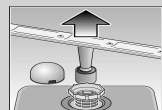
- Set main switch to OFF
- Scoop out any water
- Remove the filters
- Remove the cover (⇒A)
- Check the inner compartment for foreign objects and, if required, remove foreign objects
- Re-insert the cover (⇒B)
- Re-insert the filters and screw into position



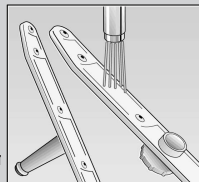
### Spray arms

Remove blockages/deposits

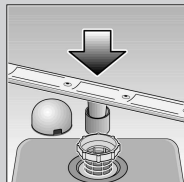
Pull up lower arm



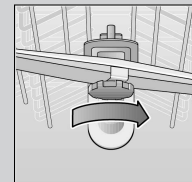
Unscrew upper arm



Clean under running water (if required, use a toothpick)



Insert lower arm



Screw on upper arm

## Rectifying minor faults yourself ...

... as it is worth doing it yourself!

Fault	Possible causes	Remedial action
<p>"Check water supply" display lights up</p>	<p>Supply fitting jammed or calcified</p>	<ul style="list-style-type: none"> <li>▶ Open supply fitting.</li> <li>▶ 1. Unscrew water connection.</li> <li>▶ 2. Clean filter in the water connection.</li> <li>▶ 3. Flow rate must be min. 9 l/min. when water supply is open. If the flow rate is less, replace the supply fitting.</li> <li>▶ Install supply hose without kinks.</li> </ul>
<p>Residual water in the appliance and "Check water supply" display lights up</p>	<p>Waste water pump blocked</p> <p>The programme has not yet ended</p> <p>Waste water hose is blocked or kinked</p>	<ul style="list-style-type: none"> <li>▶ Clean waste-water pump (see above).</li> <li>▶ Close and switch on the appliance or terminate the programme (see Terminating the programme).</li> <li>▶ Install waste water hose without kinks.</li> </ul>
<p>Plastic/utensils discoloured</p>	<p>Too little detergent</p> <p>Discoloration caused by food colourings (tomato sauce)</p>	<ul style="list-style-type: none"> <li>▶ Follow manufacturer's instructions (detergent).</li> <li>▶ Discoloration is harmless; subsequent rinse cycles will cause it to fade.</li> </ul>
<p>Rust on the cutlery</p>	<p>Cutlery not rust-resistant</p> <p>Hard knife blades are more susceptible</p> <p>Extraneous rust</p>	<ul style="list-style-type: none"> <li>▶ Use dishwasher-proof cutlery.</li> <li>▶ Never wash rusting parts in the appliance.</li> </ul>

Fault	Possible causes	Remedial action
<p>Utensils are not clean</p> <p>Sand or gritty residue on the utensils</p>	<p>Utensils are situated close together or one above the other</p> <p>Too little detergent</p> <p>Unsuitable programme selected</p> <p>Spray arm nozzles blocked</p> <p>Filters dirty, not seated firmly</p> <p>Spray arms blocked</p>	<ul style="list-style-type: none"> <li>▶ Separate the utensils, prevent contact points.</li> <li>▶ Follow manufacturer's instructions (detergent).</li> <li>▶ Select a more intensive programme.</li> <li>▶ Clean the spray arms (see above).</li> <li>▶ Clean the filters (see above).</li> <li>▶ Arrange the utensils so that the spray arms can rotate freely.</li> </ul>
<p>Stains and streaks</p>	<p>Rinse-aid dosage too high/too low</p>	<ul style="list-style-type: none"> <li>▶ Streaks: reduce dosage.</li> <li>▶ Water or limescale stains: increase dosage.</li> </ul>
<p>Milky deposits on the utensils (can be removed)</p>	<p>Water softening system incorrectly set;</p> <p>No salt</p>	<ul style="list-style-type: none"> <li>▶ Correctly set water softening system.</li> <li>▶ Refill with salt.</li> </ul>
<p>Milky deposits, glasses cloudy/tarnished (cannot be removed)</p>	<p>Glasses not dishwasher-proof</p>	<ul style="list-style-type: none"> <li>▶ Use dishwasher-proof glasses.</li> <li>▶ Use a detergent suitable for glasses.</li> </ul>

More information can be found in the operating instructions

## Interrupting the programme ... Terminating the programme ...

- Switch off the main switch.
- To continue, close the door. Switch on the main switch again.

- While the programme is running, rotate the programme selector to the Reset pos. After approx. 3 seconds the digital display indicates 0.
- The programme sequence lasts approx. 1 min.
- When the programme has run, switch off the main switch.

## Loading the dishwasher correctly ...

Dishwasher-proof utensils (not soiled with ash, wax, lubricating grease, ink or adhesive labels; remove large remnants of jam, milk products and food according to the operating instructions and check that the spray arms can rotate freely).