



Brief and handy: everything your dishwasher needs ... Before using for the first time, read the operating instructions!

1

Adjusting the water softening system*

Ask your water supply company what the water hardness is and enter ...

Read off the correct setting for your water hardness ...

| °dH | °fH | °Clarke | mmol/l | Setting |
|-------|-------|---------|---------|---------|
| 0-6 | 0-11 | 0-8 | 0-1,1 | 0 |
| 7-8 | 12-15 | 9-10 | 1,2-1,4 | 1 |
| 9-10 | 16-17 | 11-12 | 1,5-1,8 | 2 |
| 11-12 | 18-21 | 13-15 | 1,9-2,1 | 3 |
| 13-16 | 22-29 | 16-20 | 2,2-2,9 | 4 |
| 17-21 | 30-37 | 21-26 | 3,0-3,7 | 5 |
| 22-30 | 38-54 | 27-38 | 3,8-5,4 | 6 |
| 31-50 | 55-89 | 39-62 | 5,5-8,9 | 7 |

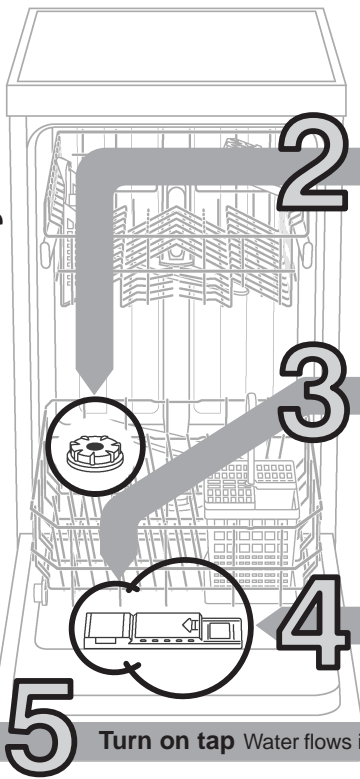


* only before the first wash or if the water hardness has been changed

Quickly sorted ...

How to adjust the water softening system

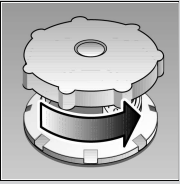
- Rotate the programme button from the 12 o'clock position by one notch to the left.
- Switch on the main switch and hold down for at least 3 seconds. The digital display indicates the current set hardness value (factory setting 4).
- Change the set value by rotating the programme selector (0-7).
- Switch off the main switch. The set value is saved.



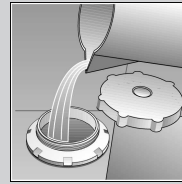
2

Filling the salt dispenser

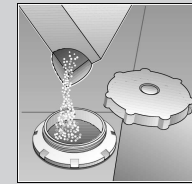
Dissolves limescale (not required for set value 0!)



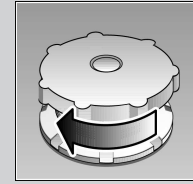
Unscrew the lid.



Only before using the dishwasher for the first time pour approx. 1 l / 2 pt water into the salt opening.



Pour in max. 1.5 kg / 3 lb 5 oz salt (never detergent!)



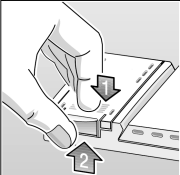
Screw on the lid. Switch on dishwasher immediately.

3

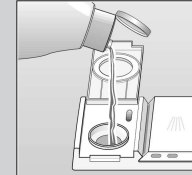
Adding rinse aid

Everything is sparkling clean ...

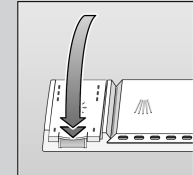
Refill whenever level indicator is light!



Press mark 1, lift up lid 2.



Pour in rinse aid.

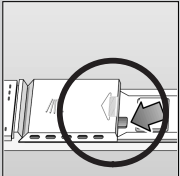


Close the lid. CLICK!

4

Adding detergent

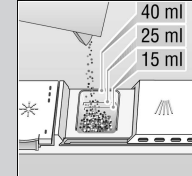
Very dirty dishes, a lot of detergent ...



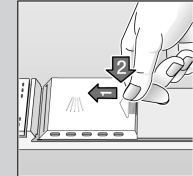
If required, open the lid (press the pin).



Warning, combination products are not suitable for all programmes, follow manufacturer's instructions.



Pour in detergent.



Push the lid shut, press. PLOP!

5

Turn on tap Water flows in ...

6

Select programme



Quick, economical or intensive ...

Overview of programmes

This overview indicates the max. possible number of programmes. The programmes which correspond to your appliance can be found on your appliance fascia.

The programme data are values measured in the laboratory in compliance with Standard EN 50242. Deviations in practice are possible.

| | Intensive 70° | Normal 65° | Eco 50° | Gentle 40° | Quick 45° | Prerinse |
|-----------------------------|------------------|---------------|------------|---------------|--------------|----------|
| Duration in minutes | 120 | 130 | 140 | 70 | 30 | 20 |
| Power consumption in kWh | 1,30 | 1,25 | 0,80 | 0,70 | 0,70 | 0,10 |
| Water consumption in litres | 15 | 16 | 11 | 13 | 10 | 4 |
| With Aqua sensor | 12 | - | - | 10 | - | - |

8

Additional programmes **

Increased flexibility ...

Soak ...crockery in the lower basket, programme starts automatically, remember to add an extra 5g of cleaning agent when the door unlocks.



Saving time (VarioSpeed) ... is obtained by increased energy consumption at a constant cleaning and drying performance.



Half load ... for a few items, saves water, energy and time



Time selection ...switches on as soon as you press the time selection button: Alters the programme start in hourly steps

9

Switch on the appliance Here we go ...

Press main switch, running time of the selected programme is indicated.

Switch off the appliance Everything o.k. ...

When the display is on 0 (end of programme), press the main switch.

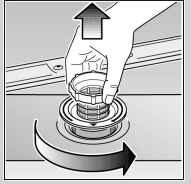
** some models

Maintenance and care

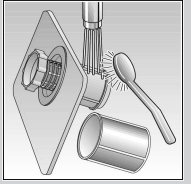
For perfect rinsing results ...

Cleaning the waste-water pump *

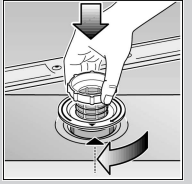
Strainers ...
Check, if required, clean



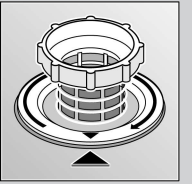
Rotate filter cylinder, remove filter system ...



rinse under flowing water ...



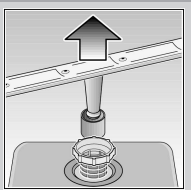
Insert ...



Screw in filter system
NOTE MARK!

- * With some models
- Ladle out water and remove filters
 - Unscrew cover (Torx T20)
 - Check area of fan impeller for foreign objects
 - Screw in cover and insert filters

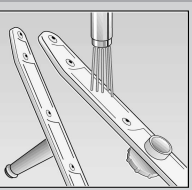
Spray arms ...
Remove blockages/deposits



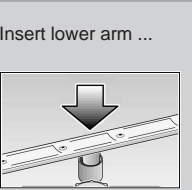
Pull lower arm upwards ...



Unscrew upper arm ...

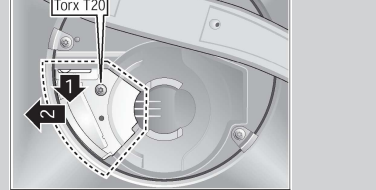


Clean spray nozzles under flowing water (perhaps with toothpick) ...



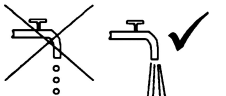
Insert lower arm ...

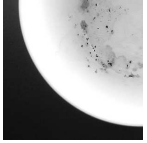
Screw in upper arm



Rectifying minor faults yourself ...

... as it is worth doing it yourself!

| Fault | Possible causes | Remedial action |
|---|---|--|
| Residual water in the appliance | <ul style="list-style-type: none"> Waste water pump blocked The programme has not yet ended | <ul style="list-style-type: none"> Clean waste-water pump (see above). Close appliance and switch on, or terminate programme (see Terminating the programme). |
| Appliance is not running / stops Check water supply Display lights up | <ul style="list-style-type: none"> Supply fitting not open Supply hose kinked Supply fitting jammed or calcified  | <ul style="list-style-type: none"> Open supply fitting. Install supply hose without kinks. 1. Unscrew water connection. 2. Clean filter in the water connection. 3. Flow rate must be min. 9 l/min. when water supply is open. If the flow rate is less, replace the supply fitting. |
| Plastic / utensils discoloured | <ul style="list-style-type: none"> Too little detergent Discoloration caused by food colourings (tomato sauce) | <ul style="list-style-type: none"> Follow manufacturer's instructions (detergent). Discoloration is harmless; subsequent rinse cycles will cause it to fade. |
| Rust on the cutlery | <ul style="list-style-type: none"> Cutlery not rust-resistant Hard knife blades are more susceptible Extraneous rust | <ul style="list-style-type: none"> Use dishwasher-proof cutlery. Never wash rusting parts in the appliance. |

| Fault | Possible causes | Remedial action |
|---|---|--|
| Utensils are not clean Sand or gritty residue on the utensils  | <ul style="list-style-type: none"> Utensils are situated close together or one above the other Too little detergent Unsuitable programme selected Spray arm nozzles blocked Filters dirty, not seated firmly Spray arms blocked | <ul style="list-style-type: none"> Separate the utensils, prevent contact points. Follow manufacturer's instructions (detergent). Select a more intensive programme. Clean the spray arms (see above). Clean the filters (see above). Arrange the utensils so that the spray arms can rotate freely. |
| Stains and streaks | Rinse-aid dosage too high / too low | <ul style="list-style-type: none"> Streaks: reduce dosage. Water or limescale stains: increase dosage. |
| Milky film on the utensils (removable) | <ul style="list-style-type: none"> Water softening system incorrectly set; No salt | <ul style="list-style-type: none"> Correctly set water softening system. Refill with salt. |
| Milky film, glasses cloudy / dull (not removable) | Glasses not dishwasher-proof. | <ul style="list-style-type: none"> Use dishwasher-proof glasses. Use a detergent suitable for glasses. |

More information can be found in the operating instructions

Interrupting the programme ...

Terminating the programme ...

Loading the dishwasher correctly ...

- Switch off the main switch.
- To continue, close the door. Switch on the main switch again.

- While the programme is running, rotate the programme selector to the Reset pos. After approx. 3 seconds the digital display indicates 0.
- The programme sequence lasts approx. 1 min.
- When the programme has run, switch off the main switch.

Dishwasher-proof utensils (not soiled with ash, wax, lubricating grease, ink or adhesive labels; remove large remnants of jam, milk products and food according to the operating instructions and check that the spray arms can rotate freely).