



Brief and handy:
everything your dishwasher
needs ...

**Before using for the first
time, read the operating
instructions!**

1

Adjusting the water softening

Ask your water supply
company what the
water hardness is
and enter ...

* only **before the first wash**
or if the **water hardness**
has been changed

Read off the correct setting for your
water hardness

°dH	°fH	°Clarke	mmol/l	Set value on the appliance
0-6	0-11	0-8	0-1,1	0
7-16	12-29	9-20	1,2-2,9	1
17-21	30-37	21-26	3,0-3,7	2
22-35	38-62	27-44	3,8-6,2	3

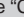

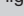


End



Quickly sorted ...

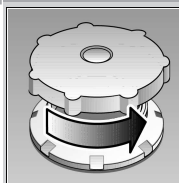
How to adjust the water softening system

- Rotate the programme button from the 12 o'clock position by one notch to the left.
- Switch on the main switch and hold down for at least 3 seconds. The salt refill indicator  flashes, the "Check water supply" display  and the programme sequence display  light up (factory setting 2).
- Change the set value by rotating the programme selector (0-3).
- Switch off the main switch. The set value is saved.

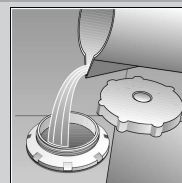
2

Filling the salt dispenser

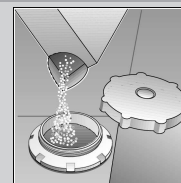
Dissolves limescale (not required for set value 0!)



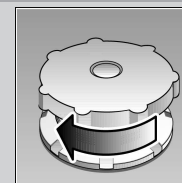
Unscrew
the lid.



**Only before using
the dishwasher
for the first time
pour approx. 1 l /
1 1/4 pt water into
the salt opening.**



Pour in max.
1.5 kg / 3 lb 5 oz
salt (never deter-
gent!)

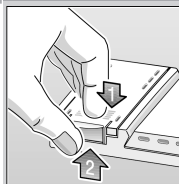


Screw on the
lid. Switch on
dishwasher
immediately.

3

Adding rinse aid

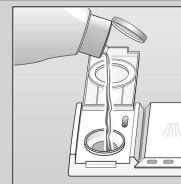
Everything is sparkling clean ...



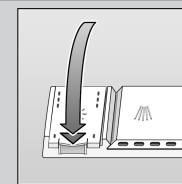
Press mark 1,
lift up lid 2.



Refill whenever level indicator is light!



Pour in
rinse aid.

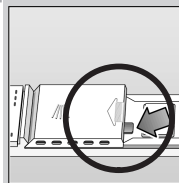


Close the
lid. **CLICK!**

4

Adding detergent

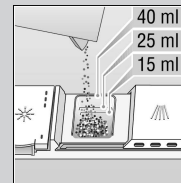
Very dirty dishes, a lot of detergent ...



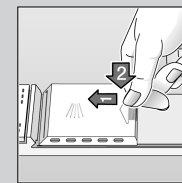
If required, open
the lid (press the
pin).



Warning,
combination
products are not
suitable for all
programmes,
follow manufac-
turer's instructions.



Pour in
detergent.



Push the lid
shut, press.
PLOP!

5

Turn on tap Water flows in ...

6







Select programme

Quick, economical or intensive ...

Overview of programmes

This overview indicates the max. possible number of
programmes. The programmes which correspond to your
appliance can be found on your appliance fascia.

The programme data are values measured in the
laboratory in compliance with Standard EN 50242.
Deviations in practice are possible.

	Intensive	Normal	Eco	Gentle	Quick	Prerinse
						
Duration in minutes	120	110	140	70	30	15
Power consumption in kWh	2,00	1,75	1,05	1,00	0,80	0,10
Water consumption in litres	21	21	17	17	13	5



7

Switch on the appliance Here we go ...

Close the door. Press the main switch, programme
sequence display lights up.

9

Switch off the appliance Everything o.k. ...

When the "end of programme" display lights up, switch
off the main switch.
Turn off the tap.

8

Additional programmes **



Soaking

... of utensils in the
bottom basket,
programme starts
automatically, 5 g of
extra detergent on
the open door!



Reduce/save time

... reduces washing time
reduces drying time



Half load

... for a few items, saves
water, energy and time



Extra dry

... improves the drying
result by increased
temperature in the final
rinse (Please take care
with delicate dishes)

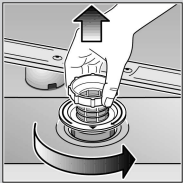
Flexibility ...

** some models

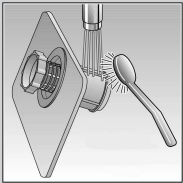
Maintenance and care

Filters

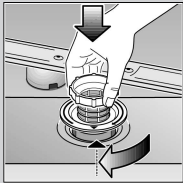
Check and, if required, clean:



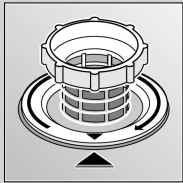
Rotate filter cylinder, remove filter system



Rinse under running water



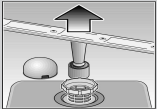
Insert



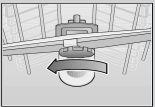
Screw on filter system. NOTE MARK!

Spray arms

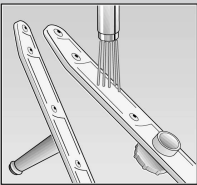
Remove blockages/ deposits



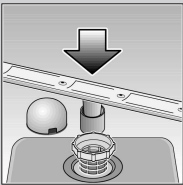
Pull up lower arm



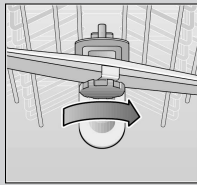
Unscrew upper arm



Clean under running water (if required, use a toothpick)



Insert lower arm

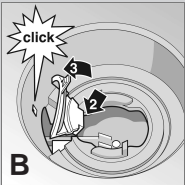
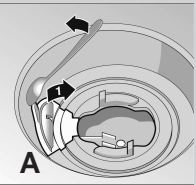


Screw on upper arm

Waste water pump *

* some models

- Set main switch to OFF
- Scoop out any water
- Remove the filters
- Remove the cover (⇒A)
- Check the inner compartment for foreign objects and, if required, remove foreign objects
- Re-insert the cover (⇒B)
- Re-insert the filters and screw into position



Rectifying minor faults yourself ...

... as it is worth doing it yourself!

Fault	Possible causes	Remedial action	Fault	Possible causes	Remedial action
Residual water in the appliance	Waste water pump blocked The programme has not yet ended	▶ Clean waste-water pump (see above). ▶ Close the appliance, switch on and wait until the programme ends ("end of programme" display lights up) or terminate programme (see Terminating the programme).	Utensils are not clean Sand or gritty residue on the utensils	Utensils are situated close together or one above the other Too little detergent Unsuitable programme selected Spray arm nozzles blocked Filters dirty, not seated firmly Spray arms blocked	▶ Separate the utensils, prevent contact points. ▶ Follow manufacturer's instructions (detergent). ▶ Select a more intensive programme. ▶ Clean the spray arms (see above). ▶ Clean the filters (see above). Arrange the utensils so that the spray arms can rotate freely.
Appliance is not running / stops Check water supply Display lights up	Supply fitting not open Supply hose kinked Supply fitting jammed or calcified	▶ Open supply fitting. ▶ Install supply hose without kinks. ▶ 1. Unscrew water connection. 2. Clean filter in the water connection. 3. Flow rate must be min. 9 l/min. when water supply is open. If the flow rate is less, replace the supply fitting.	Stains and streaks	Rinse-aid dosage too high / too low	▶ Streaks: reduce dosage. ▶ Water or limescale stains: increase dosage.
Plastic / utensils discoloured	Too little detergent Discoloration caused by food colourings (tomato sauce)	▶ Follow manufacturer's instructions (detergent). ▶ Discoloration is harmless; subsequent rinse cycles will cause it to fade.	Milky film on the utensils (removable)	Water softening system incorrectly set; No salt	▶ Correctly set water softening system. ▶ Refill with salt.
			Milky film, glasses cloudy / dull (not removable)	Glasses not dishwasher-proof.	▶ Use dishwasher-proof glasses. ▶ Use a detergent suitable for glasses.
			Rust on the cutlery	Cutlery not rust-resistant Hard knife blades are more susceptible Extraneous rust	▶ Use dishwasher-proof cutlery. ▶ Never wash rusting parts in the appliance.

More information can be found in the operating instructions

Interrupting the programme...

- Switch off the main switch.
- To continue, close the door. Switch on the main switch again.

Terminating the programme ...

- While the programme is running, rotate the programme selector to the Reset pos.
- The programme sequence lasts approx. 1 min.
- When the programme has run, switch off the main switch.

Loading the dishwasher

Dishwasher-proof utensils (not soiled with ash, wax, lubricating grease, ink or adhesive labels; remove large remnants of jam, milk products and food according to the operating instructions and check that the spray arms can rotate freely.