



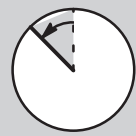
Brief and handy: everything your dishwasher needs ...  
**Before using for the first time, read the operating instructions!**

1

### Adjusting the water softening system\*

Read off the correct setting for your water hardness ...

°dH	°fH	°Clarke	mmol/l	
0-6	0-11	0-8	0-1,1	0
7-8	12-15	9-10	1,2-1,4	1
9-10	16-17	11-12	1,5-1,8	2
11-12	18-21	13-15	1,9-2,1	3
13-16	22-29	16-20	2,2-2,9	4
17-21	30-37	21-26	3,0-3,7	5
22-30	38-54	27-38	3,8-5,4	6
31-50	55-89	39-62	5,5-8,9	7



Ask your water supply company what the water hardness is and enter ...



\* only before the first wash or if the water hardness has been changed

Quickly sorted ...

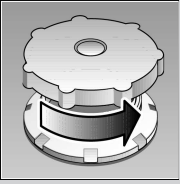
#### How to adjust the water softening system

- Rotate the programme button from the 12 o'clock position by one notch to the left.
- Switch on the main switch and hold down for at least 3 seconds. The digital display indicates the current set hardness value (factory setting 4).
- Change the set value by rotating the programme selector (0–7).
- Switch off the main switch. The set value is saved.

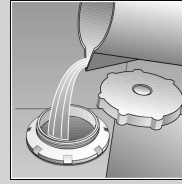
2

#### Filling the salt dispenser

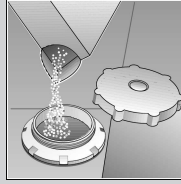
Dissolves limescale (not required for set value 0!)



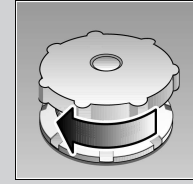
Unscrew the lid.



Only before using the dishwasher for the first time pour approx. 1 l / 1 1/4 pt water into the salt opening.



Pour in max. 1.5 kg / 3 lb 5 oz salt (never detergent!)

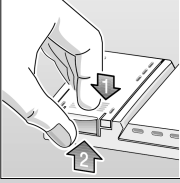


Screw on the lid. Switch on dishwasher immediately.

3

#### Adding rinse aid

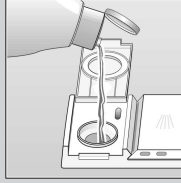
Everything is sparkling clean ...



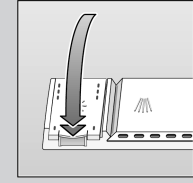
Press mark 1, lift up lid 2.



Refill whenever level indicator is light!



Pour in rinse aid.

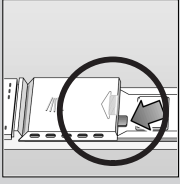


Close the lid. CLICK!

4

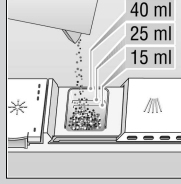
#### Adding detergent

Very dirty dishes, a lot of detergent ...

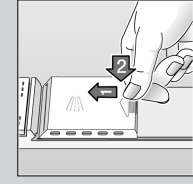


If required, open the lid (press the pin).

Warning, combination products are not suitable for all programmes, follow manufacturer's instructions.



Pour in detergent.



Push the lid shut, press. PLOP!

5

Turn on tap Water flows in ...

6

#### Select programme

Quick, economical or intensive ...

##### Overview of programmes

This overview indicates the max. possible number of programmes. The programmes which correspond to your appliance can be found on your appliance fascia.

The programme data are values measured in the laboratory in compliance with Standard EN 50242. Deviations in practice are possible.

	Intensive 70°	Normal 65°	Eco 50°	Gentle 40°	Quick 45°	Prerinse
Duration in minutes	115	140	140	75,0	30,0	19,0
Power consumption in kWh	1,70	1,60	1,05	0,90	0,80	0,10
Water consumption in litres	21,0	19,0	14,0	15,0	10,0	4,00

7

Switch on the appliance Here we go ...

Press main switch, running time of the selected programme is indicated.

9

Switch off the appliance Everything o.k. ...

When the display is on 0 (end of programme), press the main switch.

8

#### Additional programmes \*\*

Flexibility ...



##### Soaking

... of utensils in the bottom basket, programme starts automatically, 5 g of extra detergent on the open door!



##### Reduce/save time

... reduces washing time reduces drying time



##### Half load

... for a few items, saves water, energy and time



##### Extra dry

... improves the drying result by increased temperature in the final rinse (Please take care with delicate dishes)



##### Time selection

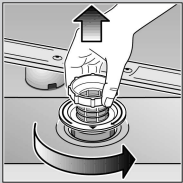
...switches on as soon as you press the time selection button: Alters the programme start in hourly steps

\*\* some models

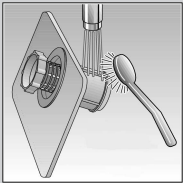
Maintenance and care

Filters

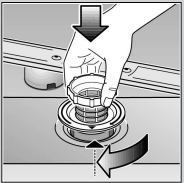
Check and, if required, clean:



Rotate filter cylinder, remove filter system



Rinse under running water



Insert

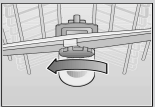
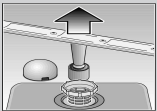


Screw on filter system. NOTE MARK!

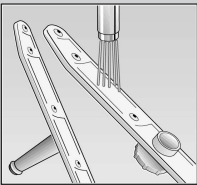
Spray arms

Remove blockages/deposits

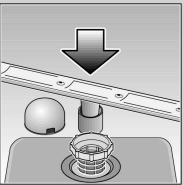
Pull up lower arm



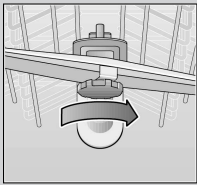
Unscrew upper arm



Clean under running water (if required, use a toothpick)



Insert lower arm



Screw on upper arm

Rectifying minor faults yourself ...

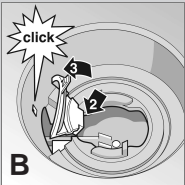
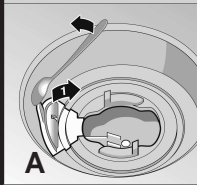
... as it is worth doing it yourself!

Fault	Possible causes	Remedial action
Residual water in the appliance	Waste water pump blocked The programme has not yet ended	▶ Clean waste-water pump (see above). ▶ Close appliance and switch on, or terminate programme (see Terminating the programme).
Appliance is not running / stops  Check water supply Display lights up	Supply fitting not open Supply hose kinked Supply fitting jammed or calcified	▶ Open supply fitting. ▶ Install supply hose without kinks. ▶ 1. Unscrew water connection. 2. Clean filter in the water connection. 3. Flow rate must be min. 9 l/min. when water supply is open. If the flow rate is less, replace the supply fitting.
Plastic / utensils discoloured	Too little detergent  Discoloration caused by food colourings (tomato sauce)	▶ Follow manufacturer's instructions (detergent). ▶ Discoloration is harmless; subsequent rinse cycles will cause it to fade.
Rust on the cutlery	Cutlery not rust-resistant Hard knife blades are more susceptible  Extraneous rust	▶ Use dishwasher-proof cutlery. ▶ Never wash rusting parts in the appliance.

Waste water pump \*

\* some models

- Set main switch to OFF
- Scoop out any water
- Remove the filters
- Remove the cover (⇒A)
- Check the inner compartment for foreign objects and, if required, remove foreign objects
- Re-insert the cover (⇒B)
- Re-insert the filters and screw into position

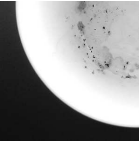


Fault

Possible causes

Remedial action

Utensils are not clean  
Sand or gritty residue on the utensils



Utensils are situated close together or one above the other  
Too little detergent  
  
Unsuitable programme selected  
Spray arm nozzles blocked  
Filters dirty, not seated firmly  
Spray arms blocked

- ▶ Separate the utensils, prevent contact points.
- ▶ Follow manufacturer's instructions (detergent).
- ▶ Select a more intensive programme.
- ▶ Clean the spray arms (see above).
- ▶ Clean the filters (see above).
- ▶ Arrange the utensils so that the spray arms can rotate freely.

Stains and streaks

Rinse-aid dosage too high / too low

- ▶ Streaks: reduce dosage.
- ▶ Water or limescale stains: increase dosage.

Milky film on the utensils (removable)

Water softening system incorrectly set;  
No salt

- ▶ Correctly set water softening system.
- ▶ Refill with salt.

Milky film, glasses cloudy / dull (not removable)

Glasses not dishwasher-proof.

- ▶ Use dishwasher-proof glasses.
- ▶ Use a detergent suitable for glasses.

More information can be found in the operating instructions

Interrupting the programme ...

Terminating the programme ...

- Switch off the main switch.
- To continue, close the door. Switch on the main switch again.

- While the programme is running, rotate the programme selector to the Reset pos. After approx. 3 seconds the digital display indicates 0.
- The programme sequence lasts approx. 1 min.
- When the programme has run, switch off the main switch.

Loading the dishwasher correctly ...

Dishwasher-proof utensils (not soiled with ash, wax, lubricating grease, ink or adhesive labels; remove large remnants of jam, milk products and food according to the operating instructions and check that the spray arms can rotate freely).