



Short and handy: everything your dishwasher needs...

Before using for the first time, read the Installation and Operating Instructions!

1

Add salt.

2

Add rinse-aid.

3

Add detergent.

4

5

Select programme.

6

Switch appliance ON, off we go...

Press main switch, choose programme.
Close door.

Switch appliance OFF, everything OK...

Signal sounds, open door. End-of-programme indicator flashes, press main switch.

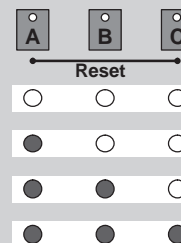
Setting the water softening system *

Find out the water **hardness** at your water utility company and **enter below**

* only **before using the dishwasher for the first time** or if the **water hardness changes**

Read off the setting

°dH	°fH	°Clarke	mmol/l	Setting
0-6	0-11	0-8	0-1,1	0
7-16	12-29	9-20	1,2-2,9	1
17-21	30-37	21-26	3,0-3,7	2
22-35	38-60	27-44	3,8-6,2	3

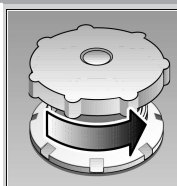


Quickly sorted

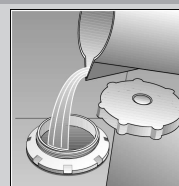
and then select a setting

- Hold down programme button **B** and switch on the main switch, then release the buttons. The display flashes and buttons **A** and **B** illuminate (water hardness setting was set to 2 at the factory).
- Each time button **B** is depressed, the setting increases by one (0-3). If buttons **A**, **B** and **C** illuminate, the maximum water hardness setting has been reached. If the water hardness setting is now increased again, the lights go out and the water hardness setting is set to 0.
- Switch off the main switch. The selected setting has been stored in the appliance.

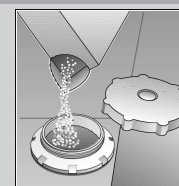
Dissolves limescale (not required for set value 0!)



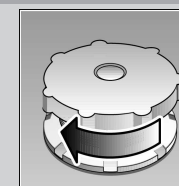
Unscrew the lid.



Only before using the dishwasher for the first time pour approx. 1 l / 1 1/4 pt water into the salt opening.

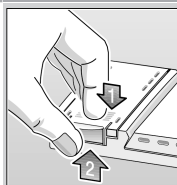


Pour in max. 1.5 kg / 3 lb 5 oz **salt** (never detergent!)



Screw on the lid. Switch on dishwasher immediately.

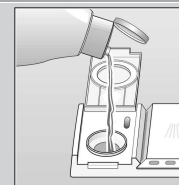
Everything is sparkling clean ...



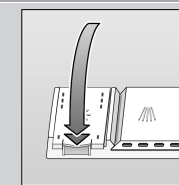
Press mark 1, lift up lid 2.



Refill whenever level indicator is light!

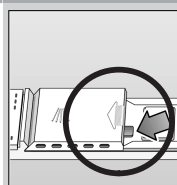


Pour in **rinse aid**.



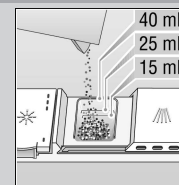
Close the lid. **CLICK!**

Very dirty dishes, a lot of detergent ...

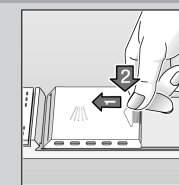


If required, open the lid (press the pin).

Warning,
combination products are not suitable for all programmes, follow manufacturer's instructions.



Pour in **detergent**.



Push the lid shut, press. **PLOP!**

Quick, economical or intensive ...

Overview of programmes

This overview indicates the max. possible number of programmes. The programmes which correspond to your appliance can be found on your appliance fascia.

The programme data are values measured in the laboratory in compliance with Standard EN 50242. Deviations in practice are possible.

	Intensive 70° 	Normal 65° 	Eco 50° 	Gentle 40° 	Quick 35° 	Prerinse
Duration in minutes	115	140	140	75	30	19
Power consumption in kWh	1,70	1,60	1,05	0,90	0,70	0,10
Water consumption in litres	21	19	14	15	10	4

Additional programmes **

Increased flexibility ...



Extra dry

... improves the drying result by increased temperature in the final rinse (Please take care with delicate dishes)



Upper basket cleaning

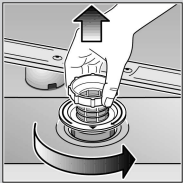
...Only the crockery in the upper basket is cleaned

** on some models

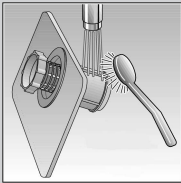
Maintenance and care

Filters

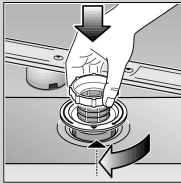
Check and, if required, clean:



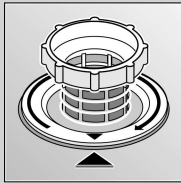
Rotate filter cylinder, remove filter system



Rinse under running water



Insert

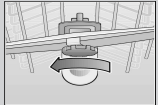
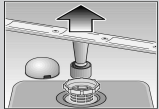


Screw on filter system. NOTE MARK!

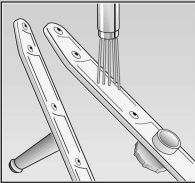
Spray arms

Remove blockages/deposits

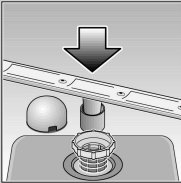
Pull up lower arm



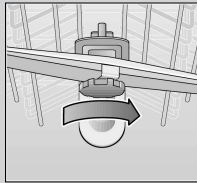
Unscrew upper arm



Clean under running water (if required, use a toothpick)



Insert lower arm

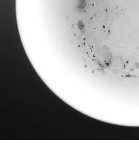


Screw on upper arm

Rectifying minor faults yourself ...

... as it is worth doing it yourself!

Fault	Possible causes	Remedial action
Residual water in the appliance	Waste water pump blocked The programme has not yet ended	▶ Clean waste-water pump (see above). ▶ Close the appliance, switch on and wait until the programme ends ("end of programme" display lights up) or terminate programme (see Terminating the programme).
Appliance is not running / stops Check water supply Display lights up	Supply fitting not open Supply hose kinked Supply fitting jammed or calcified	▶ Open supply fitting. ▶ Install supply hose without kinks. ▶ 1. Unscrew water connection. 2. Clean filter in the water connection. 3. Flow rate must be min. 9 l/min. when water supply is open. If the flow rate is less, replace the supply fitting.
Plastic / utensils discoloured	Too little detergent Discoloration caused by food colourings (tomato sauce)	▶ Follow manufacturer's instructions (detergent). ▶ Discoloration is harmless; subsequent rinse cycles will cause it to fade.

Fault	Possible causes	Remedial action
Utensils are not clean Sand or gritty residue on the utensils 	Utensils are situated close together or one above the other Too little detergent Unsuitable programme selected Spray arm nozzles blocked Filters dirty, not seated firmly Spray arms blocked	▶ Separate the utensils, prevent contact points. ▶ Follow manufacturer's instructions (detergent). ▶ Select a more intensive programme. ▶ Clean the spray arms (see above). ▶ Clean the filters (see above). Arrange the utensils so that the spray arms can rotate freely.
Stains and streaks	Rinse-aid dosage too high / too low	▶ Streaks: reduce dosage. ▶ Water or limescale stains: increase dosage.
Milky film on the utensils (removable)	Water softening system incorrectly set; No salt	▶ Correctly set water softening system. ▶ Refill with salt.
Milky film, glasses cloudy / dull (not removable)	Glasses not dishwasher-proof.	▶ Use dishwasher-proof glasses. ▶ Use a detergent suitable for glasses.
Rust on the cutlery	Cutlery not rust-resistant Hard knife blades are more susceptible Extraneous rust	▶ Use dishwasher-proof cutlery. ▶ Never wash rusting parts in the appliance.

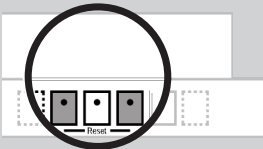
More information can be found in the operating instructions

Interrupting the programme ...

Terminating the programme ...

- Open the door.
- Press the **START/STOP** button.
- To continue, press the **START/STOP** button again.
- Close the door.

- Open the door.
- Press the two **RESET** buttons **simultaneously** (approx. 3 seconds) (**RESET**).
- Close the door.



After 1 minute the programme ends. The "signal" sounds and the standby indicator illuminates".

Switch off the appliance.

Arranging dishes correctly ...

Arrange dishwasher-proof dishes in accordance with the operating manual (without residual ash, wax, lubricating grease, ink, sticky labels; remove any large remnants of jam, milk products or food) and check that the spray arms can rotate freely.

Waste water pump *

* some models

- Set main switch to OFF
- Scoop out any water
- Remove the filters
- Remove the cover (⇒A)
- Check the inner compartment for foreign objects and, if required, remove foreign objects
- Re-insert the cover (⇒B)
- Re-insert the filters and screw into position

