



Quick and easy:
everything you need to know
about your dishwasher...
**You should, however, still
read the installation and
operating instructions before
you use the dishwasher for
the first time.**

1

Pour in the water/special salt

2

Pour in the rinsing agent

3

Pour in the cleaning agent

4

5

Select the programme

7

Switch on the appliance the dishwasher starts...

Press the on/off switch, the cycle time
for the programme selected appears

Switch off the appliance that's it...

Press the on/off switch when
the indicator shows 0 (programme end)

Set the water softening system *

Find out the **water hard-
ness** at your water utility
company and **enter**



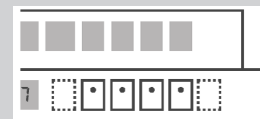
* only **before using** the dish-
washer **for the first time** or
if the **water hardness**
changes

Read off the setting ...

°dH	°fH	°Clarke	mmol/l	
0 - 6	0 - 11	0 - 8	0 - 1,1	0
7 - 8	12 - 15	9 - 10	1,2 - 1,4	1
9 - 10	16 - 17	11 - 12	1,5 - 1,8	2
11 - 12	18 - 21	13 - 15	1,9 - 2,1	3
13 - 16	22 - 29	16 - 20	2,2 - 2,9	4
17 - 21	30 - 37	21 - 26	3,0 - 3,7	5
22 - 30	38 - 54	27 - 38	3,8 - 5,4	6
31 - 50	55 - 89	39 - 62	5,5 - 8,9	7



Reset



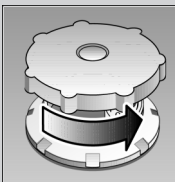
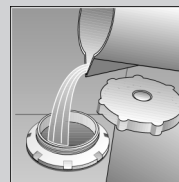
Reset

Quickly sorted ...

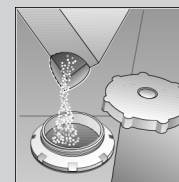
and then set

- Hold down programme button **B** and switch on the main switch, then release the buttons. The display of button **B** and the number **4** set by the factory flash.
- Each time button **B** is depressed, the setting increases by one; if **7** has been reached, the display jumps back to **0**.
- Switch off the main switch. The selected setting has been stored in the appliance.

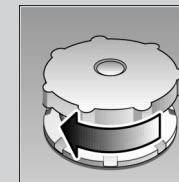
Dissolves limescale (not required for set value 0!)

Unscrew
the lid.

Only **before using** the dishwasher
for the first time
pour approx. 1 l /
2 pt water into the
salt opening.

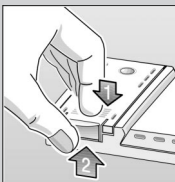


Pour in max.
1.5 kg / 3 lb 5 oz
salt (never deter-
gent!)

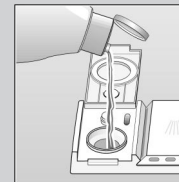
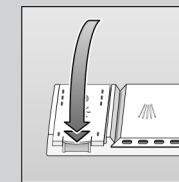


Screw on the
lid. Switch on
dishwasher
immediately.

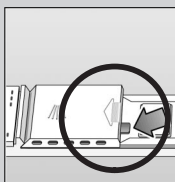
Everything is sparkling clean ...

Press mark 1,
lift up lid 2.

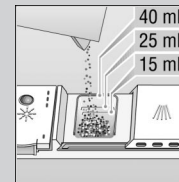
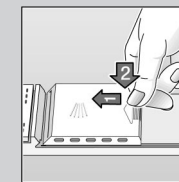
Refill whenever level indicator is light!

Pour in
rinse aid.Close the
lid. **CLICK!**

Very dirty dishes, a lot of detergent ...

If required, open
the lid (press the
pin).

Warning,
combination
products are not
suitable for all
programmes,
follow manufac-
turer's instructions.

Pour in
detergent.Push the lid
shut, press.
PLOP!

Quick, economical or intensive ...

Programme overview

This overview lists the max. possible number of
programmes. The programmes supplied with your
appliance are indicated on the fascia.

The programme data are values measured in the
laboratory in compliance with Standard EN 50242.
Deviations in practice are possible.

	Intensive 70°	Auto 55° / 65°	Eco 50°	Gentle 40°	Quick 45°	Prerinse
Duration in minutes	115	95-140	140	75	30	19
Electricity consumption in kWh	1,70	1,25-1,60	1,05	0,90	0,80	0,10
Water consumption in litres	21	11-19	14	15	10	4
with Aquasensor	18	—	—	12	—	—

Additional programmes **

Increased flexibility ...



Time selection

...switches on as soon as
you press the time
selection button:
Alters the programme
start in hourly steps



Upper basket cleaning

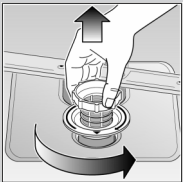
...Only the crockery in the
upper basket is cleaned

** on some models

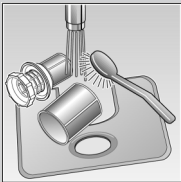
Maintenance and care

Strainers ...

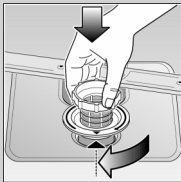
Check, if required, clean



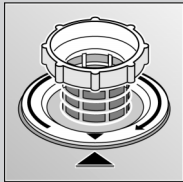
Rotate filter cylinder, remove filter system ...



rinse under flowing water ...



Insert ...



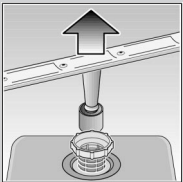
Screw in filter system NOTE MARK!

Cleaning the waste-water pump *

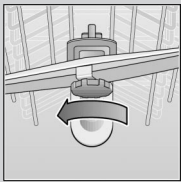
- * With some models
- Ladle out water and remove filters
- Unscrew cover (Torx T20)
- Check area of fan impeller for foreign objects
- Screw in cover and insert filters

Spray arms ...

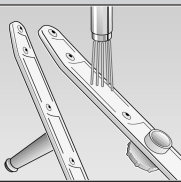
Remove blockages/deposits



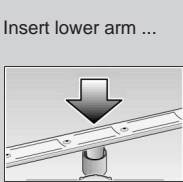
Pull lower arm upwards ...



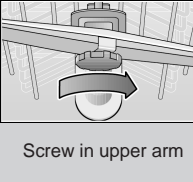
Unscrew upper arm ...



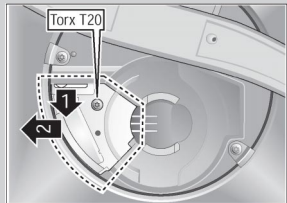
Clean spray nozzles under flowing water (perhaps with toothpick) ...



Insert lower arm ...

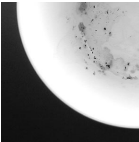
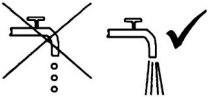


Screw in upper arm



Rectifying minor faults yourself ...

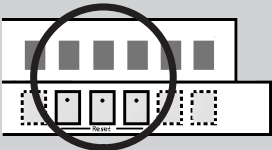
... as it is worth doing it yourself!

Fault	Possible causes	Remedial action	Fault	Possible causes	Remedial action
Residual water in the appliance	Waste water pump blocked The programme has not yet ended	▶ Clean waste-water pump (see above). ▶ Switch on appliance and close or terminate programme (see Terminating the programme).	Utensils are not clean Sand or gritty residue on the utensils	Utensils are situated close together or one above the other Too little detergent 	▶ Separate the utensils, prevent contact points. ▶ Follow manufacturer's instructions (detergent). ▶ Select a more intensive programme. ▶ Clean the spray arms (see above). ▶ Clean the filters (see above). ▶ Arrange the utensils so that the spray arms can rotate freely.
Appliance is not running / stops Check water supply Display lights up	Supply fitting not open Supply hose kinked Supply fitting jammed or calcified 	▶ Open supply fitting. ▶ Install supply hose without kinks. ▶ 1. Unscrew water connection. 2. Clean filter in the water connection. 3. Flow rate must be min. 9 l/min. when water supply is open. If the flow rate is less, replace the supply fitting.	Stains and streaks	Rinse-aid dosage too high / too low	▶ Streaks: reduce dosage. ▶ Water or limescale stains: increase dosage.
Plastic / utensils discoloured	Too little detergent Discoloration caused by food colourings (tomato sauce)	▶ Follow manufacturer's instructions (detergent). ▶ Discoloration is harmless; subsequent rinse cycles will cause it to fade.	Milky film on the utensils (removable)	Water softening system incorrectly set; No salt	▶ Correctly set water softening system. ▶ Refill with salt.
Rust on the cutlery	Cutlery not rust-resistant Hard knife blades are more susceptible Extraneous rust	▶ Use dishwasher-proof cutlery. ▶ Never wash rusting parts in the appliance.	Milky film, glasses cloudy / dull (not removable)	Glasses not dishwasher-proof.	▶ Use dishwasher-proof glasses. ▶ Use a detergent suitable for glasses.

More information can be found in the operating instructions

Stopping the programme ...

Press and hold the two reset buttons simultaneously for approximately 3 seconds while the programme is running (RESET)



"0" appears

The programme will stop after 1 minute



Switch off the appliance.

Loading the dishwasher correctly ...

Arrange dishwasher-proof utensils (having removed any ash, wax, grease, ink, sticky labels; remove, large remnants of jam, dairy products and food) according to the operating instructions and check that the spray arms can rotate freely.