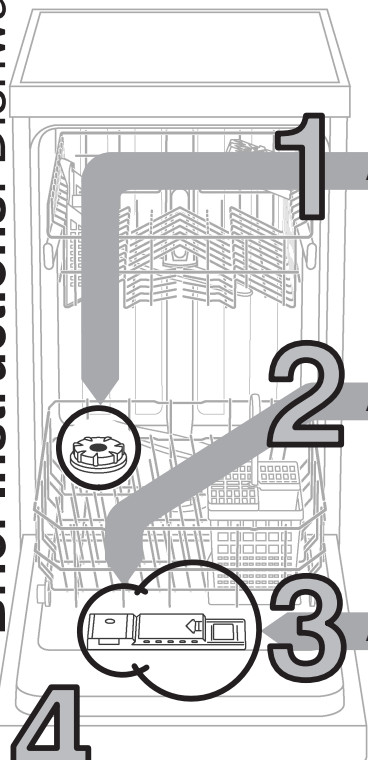




Short and handy: everything your dishwasher needs...

Before using for the first time, read the Installation and Operating Instructions!



1

Add salt.

2

Add rinse-aid.

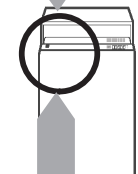
3

Add detergent.

4

5

Select programme.



6

Switch appliance ON, off we go...

Press main switch, choose programme.
Close door.

Switch appliance OFF, everything OK...

Signal sounds, open door. End-of-programme
indicator flashes, press main switch.

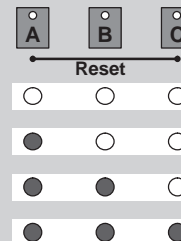
Setting the water softening system *

Find out the water **hardness** at your water utility company and **enter below**

* only **before using the dishwasher for the first time** or if the **water hardness changes**

Read off the setting

°dH	°fH	°Clarke	mmol/l	Setting
0-6	0-11	0-8	0-1,1	0
7-16	12-29	9-20	1,2-2,9	1
17-21	30-37	21-26	3,0-3,7	2
22-35	38-60	27-44	3,8-6,2	3

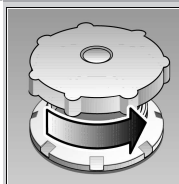


Quickly sorted

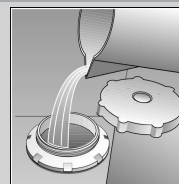
and then select a setting

- Hold down programme button **B** and switch on the main switch, then release the buttons. The display flashes and buttons **A** and **B** illuminate (water hardness setting was set to 2 at the factory).
- Each time button **B** is depressed, the setting increases by one (0-3). If buttons **A**, **B** and **C** illuminate, the maximum water hardness setting has been reached. If the water hardness setting is now increased again, the lights go out and the water hardness setting is set to 0.
- Switch off the main switch. The selected setting has been stored in the appliance.

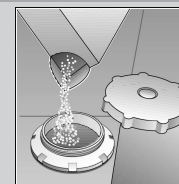
Dissolves limescale (not required for set value 0!)



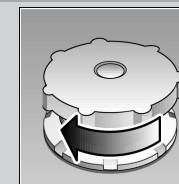
Unscrew
the lid.



Only before using the dishwasher for the first time pour approx. 1 l / 2 pt water into the salt opening.

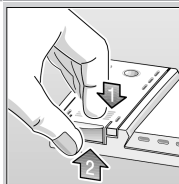


Pour in max.
1.5 kg / 3 lb 5 oz
salt (never detergent!)



Screw on the
lid. Switch on
dishwasher
immediately.

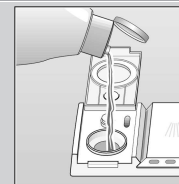
Everything is sparkling clean ...



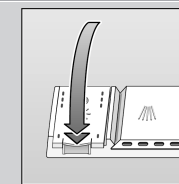
Press mark 1,
lift up lid 2.



Refill whenever level indicator is light!

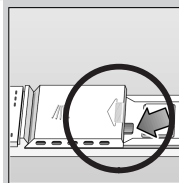


Pour in
rinse aid.



Close the
lid. **CLICK!**

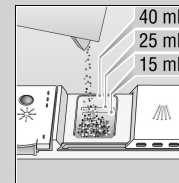
Very dirty dishes, a lot of detergent ...



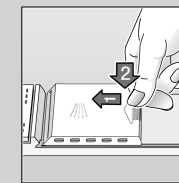
If required, open
the lid (press the
pin).



Warning,
combination
products are not
suitable for all
programmes,
follow manufac-
turer's instructions.



Pour in
detergent.



Push the lid
shut, press.
PLOP!

Quick, economical or intensive ...

Overview of programmes

This overview indicates the max. possible number of programmes. The programmes which correspond to your appliance can be found on your appliance fascia.

The programme data are values measured in the laboratory in compliance with Standard EN 50242. Deviations in practice are possible.

	Intensive 70° 	Normal 65° 	Eco 50° 	Quick 35° 	Prerinse
Duration in minutes	109	145	155	30	20
Power consumption in kWh	1,35	1,30	0,80	0,50	0,10
Water consumption in litres	20	18	13	10	4

Additional programmes **

Increased flexibility ...



Upper basket cleaning

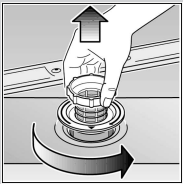
...Only the crockery in the
upper basket is cleaned

** on some models

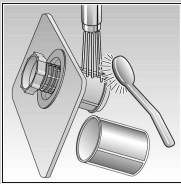
Maintenance and care

Strainers ...

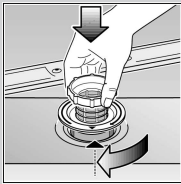
Check, if required, clean



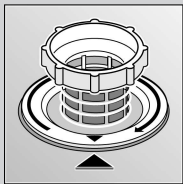
Rotate filter cylinder, remove filter system ...



For perfect rinsing results ...
rinse under flowing water ...



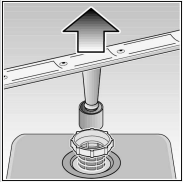
Insert ...



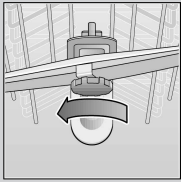
Screw in filter system
NOTE MARK!

Spray arms ...

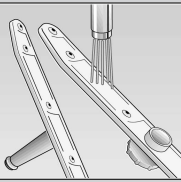
Remove blockages/deposits



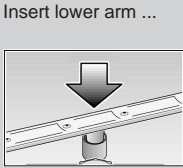
Pull lower arm upwards ...



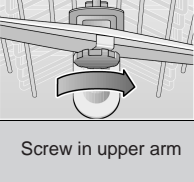
Unscrew upper arm ...



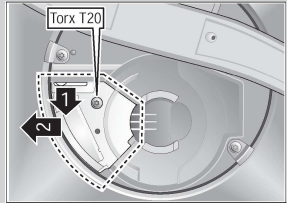
Clean spray nozzles under flowing water (perhaps with toothpick) ...



Insert lower arm ...



Screw in upper arm



- Cleaning the waste-water pump *
- * With some models
- Ladle out water and remove filters
 - Unscrew cover (Torx T20)
 - Check area of fan impeller for foreign objects
 - Screw in cover and insert filters

Eliminating minor faults yourself ...

... Self-help pays!

Fault	Possible Cause	Remedy
Residual water in the device	Waste-water pump blocked Programme not yet ended	<ul style="list-style-type: none">▶ Clean waste-water pump (see above).▶ Close the appliance and wait until the programme ends (end of programme display lights up) or terminate programme (see Terminating the programme).
Appliance is not running / stops Check water supply Display lights up	Supply fitting not open Supply hose kinked Supply fitting jammed or calcified	<ul style="list-style-type: none">▶ Open supply fitting.▶ Lay supply hose without kinks.▶ 1. Unscrew water connection. 2. Clean filter in the water connection. 3. Flow rate must be min. 9 l/min when the water inlet is open. If the flow rate is less, replace the supply fitting.
Plastic parts / parts of dishes discoloured	Too little cleaning product Discoloration caused by food colourings (tomato sauce)	<ul style="list-style-type: none">▶ Follow manufacturer's specifications (detergent).▶ Discoloration is quite safe; fades after subsequent rinse cycles.

Fault	Possible Cause	Remedy
Dishes not clean Sand or grainy residues on dishes	Utensils are situated too close to each other or on top of each other Too little cleaning product Unsuitable programme selected Spray nozzles blocked Filters dirty, not installed securely Spray arms blocked	<ul style="list-style-type: none">▶ Spread out the utensils, avoid contact between the utensils.▶ Follow manufacturer's specifications (detergent).▶ Select more intensive programme.▶ Clean spray arms (see above).▶ Clean the strainers (see above).▶ Arrange the utensils so that the spray arms can rotate freely.
Stains and streaks	Rinse aid dosage too high / too low	<ul style="list-style-type: none">▶ Streaks: Reduce dosage.▶ Water or limescale stains: Increase dosage.
Milky residues on dishes (can be removed)	Water softening system incorrectly set; no special salt	<ul style="list-style-type: none">▶ Set water softening system correctly.▶ Refill with special salt.
Milky film, glasses cloudy / dull (cannot be removed)	Glasses not dishwasher-proof.	<ul style="list-style-type: none">▶ Use dishwasher-proof glasses.▶ Use glass-friendly cleaning products.
Cutlery rusty	Cutlery not rust-proof Hard knife blades are more susceptible Extraneous rust	<ul style="list-style-type: none">▶ Use dishwasher-proof cutlery.▶ Never wash rusting parts in the appliance.

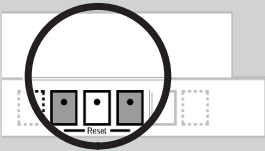
Further advice can be found in the instruction manual

Interrupting the programme ...

Terminating the programme ...

- Open the door.
- Press the START/STOP button.
- To continue, press the START/STOP button again.
- Close the door.

- Open the door.
- Press the two **RESET** buttons **simultaneously** (approx. 3 seconds) (RESET).
- Close the door.



After 1 minute the programme ends. The "signal sounds and the standby indicator illuminates".

Switch off the appliance.

Arranging dishes correctly ...

Arrange dishwasher-proof dishes in accordance with the operating manual (without residual ash, wax, lubricating grease, ink, sticky labels; remove any large remnants of jam, milk products or food) and check that the spray arms can rotate freely.