



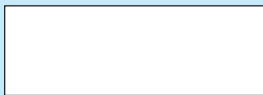
Quick and easy:
everything you need to know
about your dishwasher...
**You should, however, still
read the installation and
operating instructions before
you use the dishwasher for
the first time.**

Inserting the water softening system *

Quick procedure ...

Enter the hardness value ...

ask your
water supplier



* only necessary before the first rinse or
if the water hardness has changed

Read off the setpoint value ...

| °dH | °fH | °Clarke | mmol/l | |
|---------|---------|---------|-----------|----|
| 0 - 3 | 0 - 6 | 0 - 4 | 0 - 0,6 | 00 |
| 4 - 6 | 7 - 11 | 5 - 8 | 0,7 - 1,1 | 01 |
| 7 - 9 | 12 - 16 | 9 - 11 | 1,2 - 1,6 | 02 |
| 10 - 12 | 17 - 21 | 12 - 15 | 1,7 - 2,1 | 03 |
| 13 - 16 | 22 - 29 | 16 - 20 | 2,2 - 2,9 | 04 |
| 17 - 21 | 30 - 37 | 21 - 26 | 3,0 - 3,7 | 05 |
| 22 - 30 | 38 - 54 | 27 - 38 | 3,8 - 5,4 | 06 |
| 31 - 50 | 55 - 89 | 39 - 62 | 5,5 - 8,9 | 07 |

and enter it as shown below ...

Press and hold
the ECO button



and the on/off
button

The ECO indicator lamp
and the setpoint value 4
flash

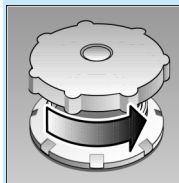
Hold the ECO button until
the required value appears

The required setpoint
value appears instead
of "4"

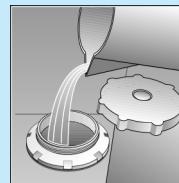
Press the on/off button

The setpoint value
is stored

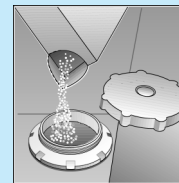
Dissolves limescale (not required for set value 0!)



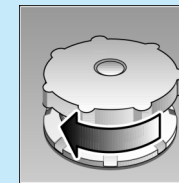
Unscrew
the lid.



**Only before using
the dishwasher
for the first time
pour approx. 1 l /
1 1/4 pt water into
the salt opening.**



Pour in max.
1.5 kg / 3 lb 5 oz
salt (never deter-
gent!)

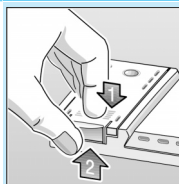


Screw on the
lid. Switch on
dishwasher
immediately.

1 Pour in the water/special salt

2 Pour in the rinsing agent

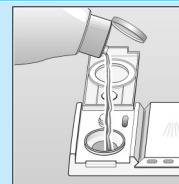
Everything is sparkling clean ...



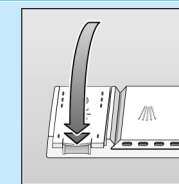
Press mark 1,
lift up lid 2.



Refill whenever level indicator is light!



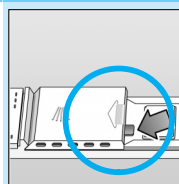
Pour in
rinse aid.



Close the
lid. CLICK!

3 Pour in the cleaning agent

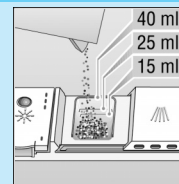
Very dirty dishes, a lot of detergent ...



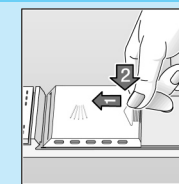
If required, open
the lid (press the
pin).



Warning,
combination
products are not
suitable for all
programmes,
follow manufac-
turer's instructions.



Pour in
detergent.



Push the lid
shut, press.
PLOP!

5 Select the programme

Quick, economical or intensive ...

Programme overview

This overview lists the max. possible number of
programmes. The programmes supplied with your
appliance are indicated on the fascia.

The programme data are values measured in the
laboratory in compliance with Standard EN 50242.
Deviations in practice are possible.

| Intensive 70° | Auto 55° / 65° | Eco 50° | Gentle 40° | Quick 45° | Pre-rinse |
|--------------------------------|-------------------|------------|---------------|--------------|-----------|
| | | | | | |
| Duration in minutes | 112 | 95-145 | 140 | 72 | 30 |
| Electricity consumption in kWh | 1,60 | 1,15-1,50 | 1,05 | 0,80 | 0,10 |
| Water consumption in litres | 21 | 11-19 | 14 | 15 | 10 |
| with Aquasensor | 18 | — | — | 12 | — |

Additional programmes **

Increased flexibility ...



Soak
...crockery in the lower
basket, programme
starts automatically,
remember to add an
extra 5g of cleaning
agent when the door
unlocks.



**Time reduction/
time saving**
...shortens the
cleaning time, reduces
the drying.



Upper basket cleaning
...Only the crockery in the
upper basket is cleaned



Lower basket cleaning
...Only the crockery in the
lower basket is cleaned



Time selection
...switches on as soon as
you press the time
selection button:
Alters the programme
start in hourly steps

** on some models

Switch on the appliance the dishwasher starts...

Press the on/off switch, the cycle time
for the programme selected appears

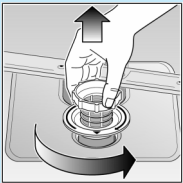
Switch off the appliance that's it...

Press the on/off switch when
the indicator shows 0 (programme end)

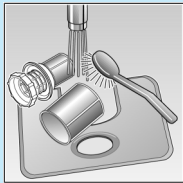
Maintenance and care

Strainers ...

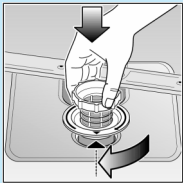
Check, if required, clean



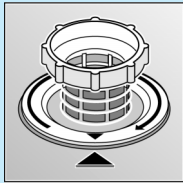
Rotate filter cylinder, remove filter system ...



rinse under flowing water ...



Insert ...



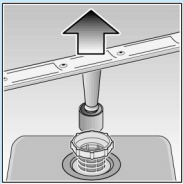
Screw in filter system NOTE MARK!

Cleaning the waste-water pump *

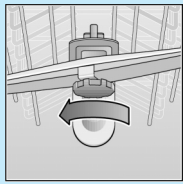
- * With some models
- Ladle out water and remove filters
- Unscrew cover (Torx T20)
- Check area of fan impeller for foreign objects
- Screw in cover and insert filters

Spray arms ...

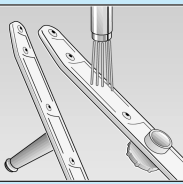
Remove blockages/deposits



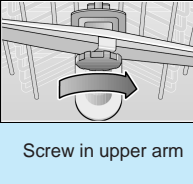
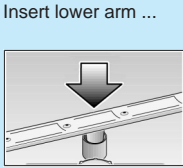
Pull lower arm upwards ...



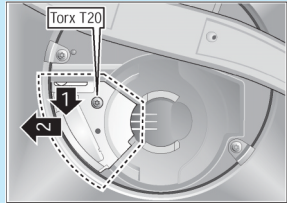
Unscrew upper arm ...



Clean spray nozzles under flowing water (perhaps with toothpick) ...

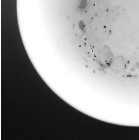
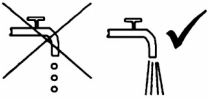


Screw in upper arm



Eliminating minor faults yourself ...

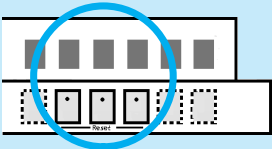
... Self-help pays!

| Fault | Possible Cause | Remedy | Fault | Possible Cause | Remedy |
|---|--|---|---|--|---|
| Residual water in the device | Waste-water pump blocked Programme not yet ended | <ul style="list-style-type: none">▶ Clean waste-water pump (see above).▶ Switch on appliance and close or terminate programme (see Terminating the programme). | Dishes not clean Sand or grainy residues on dishes | Utensils are situated too close to each other or on top of each other Too little cleaning product  Unsuitable programme selected Spray nozzles blocked Filters dirty, not installed securely Spray arms blocked | <ul style="list-style-type: none">▶ Spread out the utensils, avoid contact between the utensils.▶ Follow manufacturer's specifications (detergent).▶ Select more intensive programme.▶ Clean spray arms (see above).▶ Clean the strainers (see above).▶ Arrange the utensils so that the spray arms can rotate freely. |
| Device does not work/stops | Supply fitting not open Supply hose kinked Supply fitting jammed or calcified  | <ul style="list-style-type: none">▶ Open supply fitting.▶ Lay supply hose without kinks.▶ 1. Unscrew water connection.▶ 2. Clean filter in the water connection.▶ 3. Flow rate must be min. 9 l/min when the water inlet is open.▶ If the flow rate is less, replace the supply fitting. | Stains and streaks | Rinse aid dosage too high / too low | <ul style="list-style-type: none">▶ Streaks: Reduce dosage.▶ Water or limescale stains: Increase dosage. |
| Plastic parts / parts of dishes discoloured | Too little cleaning product Discoloration caused by food colourings (tomato sauce) | <ul style="list-style-type: none">▶ Follow manufacturer's specifications (detergent).▶ Discoloration is quite safe; fades after subsequent rinse cycles. | Milky residues on dishes (can be removed) | Water softening system incorrectly set; no special salt | <ul style="list-style-type: none">▶ Set water softening system correctly.▶ Refill with special salt. |
| Cutlery rusty | Cutlery not rust-proof Hard knife blades are more susceptible Extraneous rust | <ul style="list-style-type: none">▶ Use dishwasher-proof cutlery.▶ Never wash rusting parts in the appliance. | Milky film, glasses cloudy / dull (cannot be removed) | Glasses not dishwasher-proof. | <ul style="list-style-type: none">▶ Use dishwasher-proof glasses.▶ Use glass-friendly cleaning products. |

Further advice can be found in the instruction manual

Stopping the programme ...

Press and hold the two reset buttons simultaneously for approximately 3 seconds while the programme is running (RESET)



▶ "0" appears
The programme will stop after 1 minute

▶ Switch off the appliance.

Loading the dishwasher correctly ...

Arrange dishwasher-proof utensils (having removed any ash, wax, grease, ink, sticky labels; remove, large remnants of jam, dairy products and food) according to the operating instructions and check that the spray arms can rotate freely.