



**BOSCH**

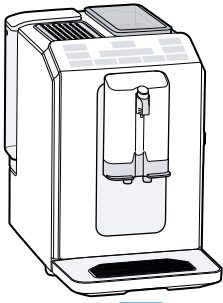


**Register** your  
new device on  
MyBosch now and  
get free benefits:  
**[bosch-home.com/  
welcome](https://bosch-home.com/welcome)**

# Fully automatic espresso machine

**TIE20301IN**

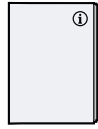
**[en]** Information for Use



A



B



C



D

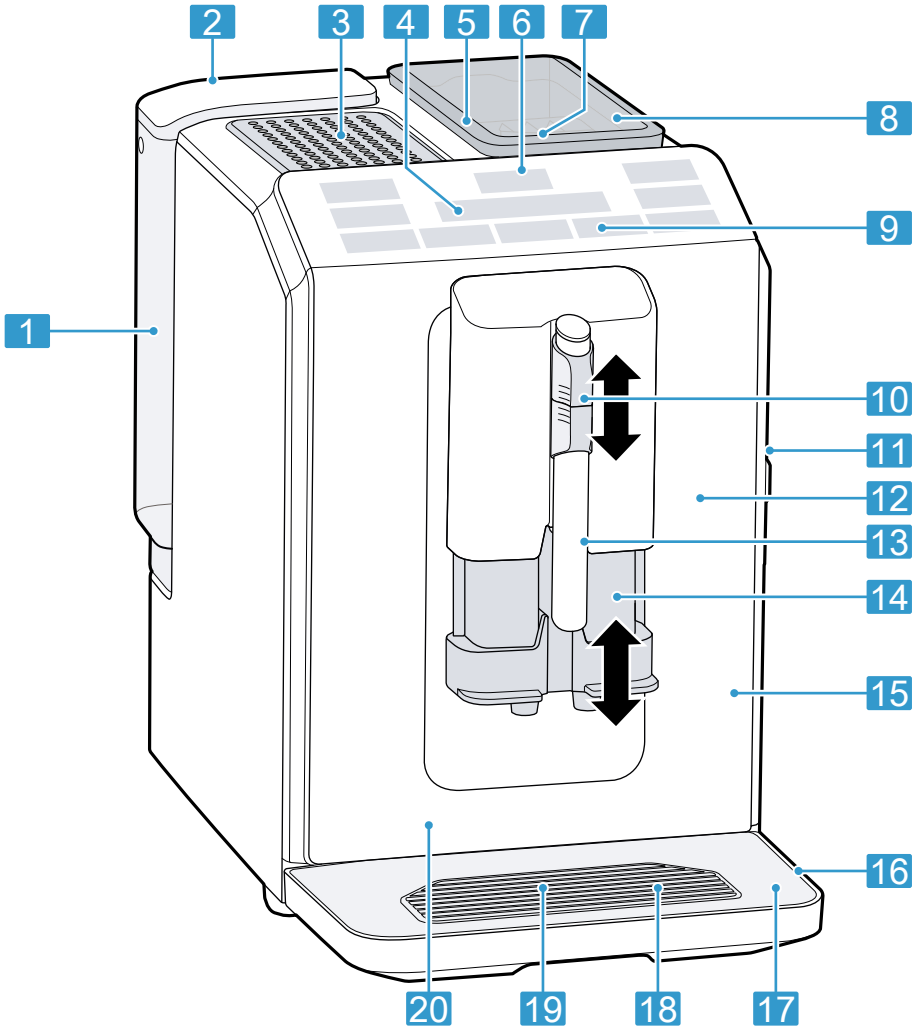


E

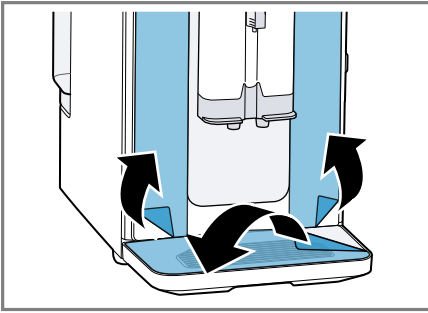


F

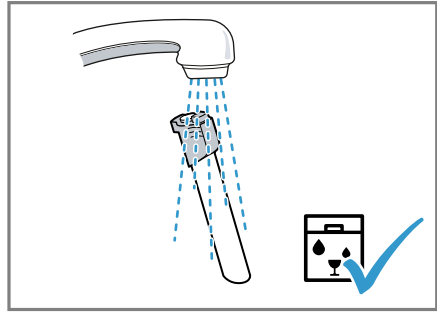
1



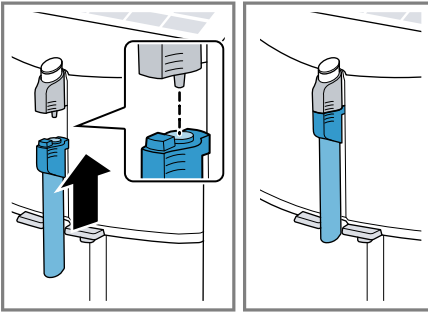
2



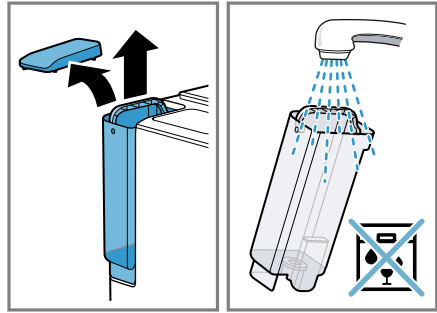
3



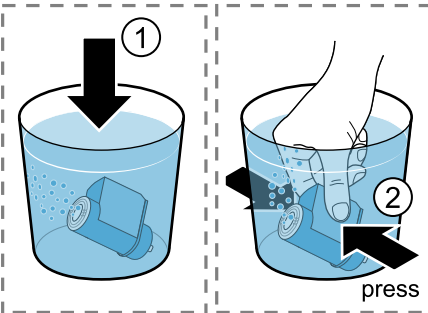
4



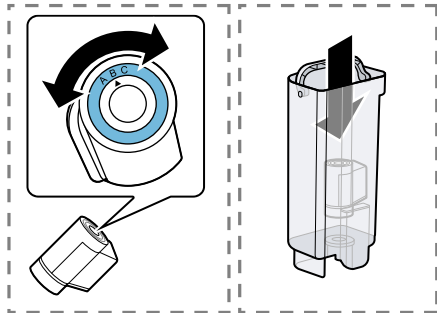
5



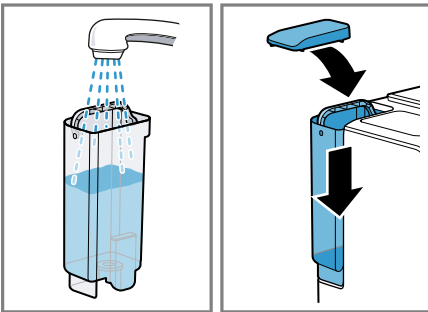
6



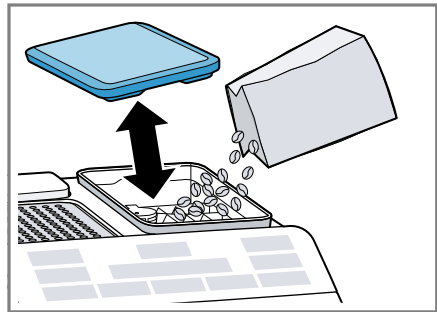
7



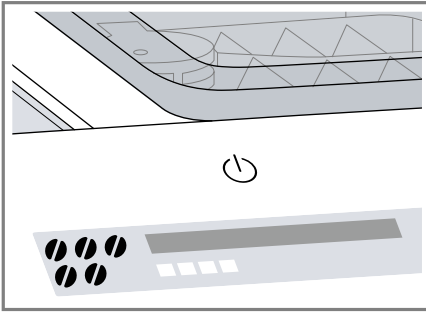
8



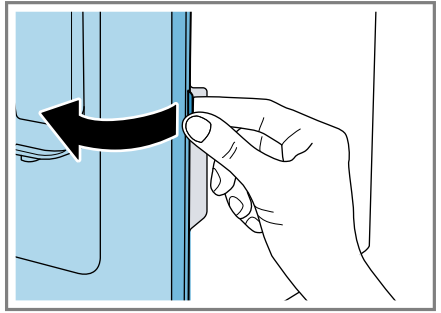
9



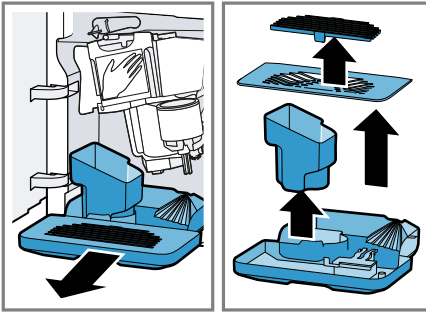
10



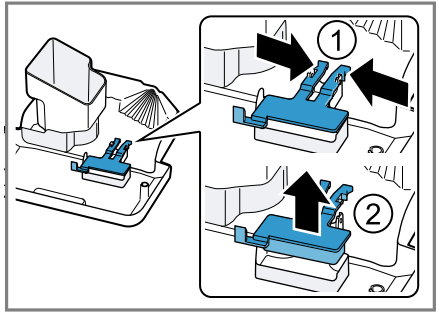
11



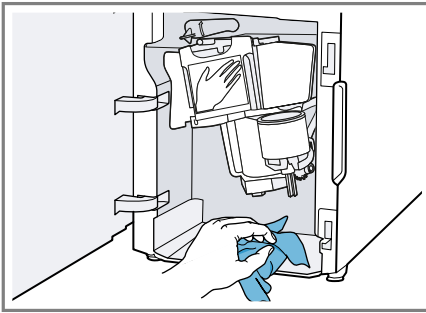
12



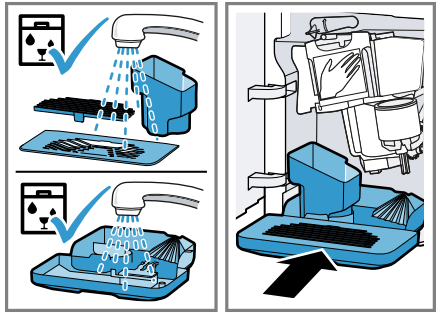
13



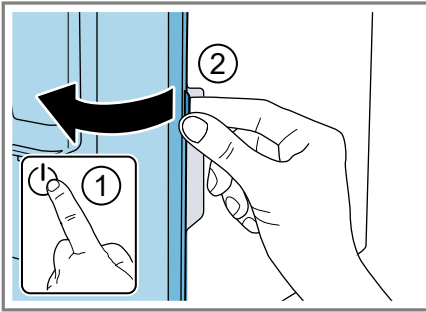
14



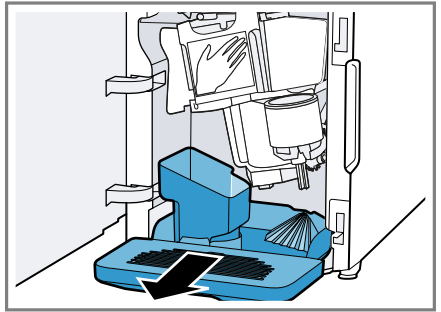
15



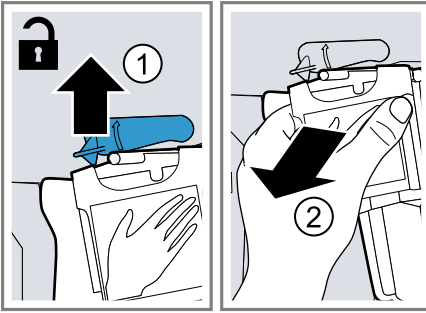
16



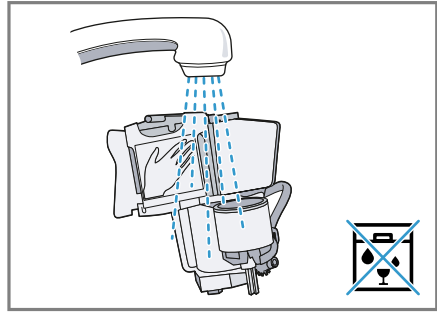
17



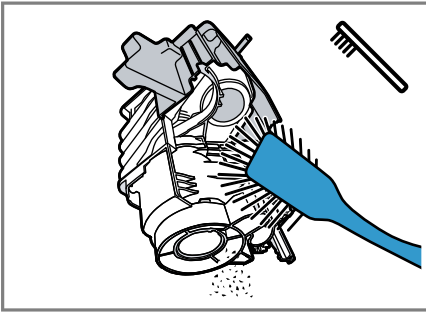
18



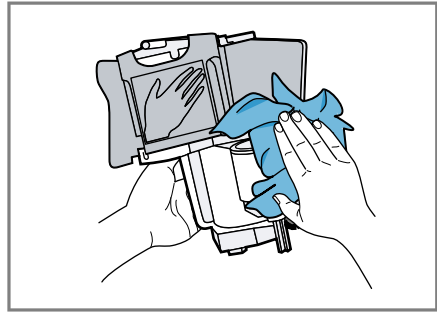
19



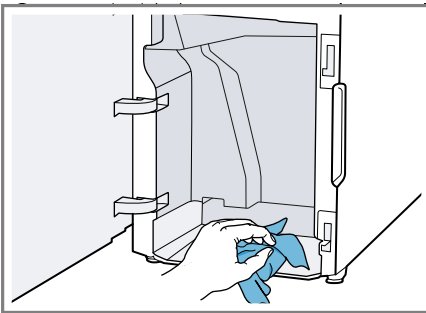
20



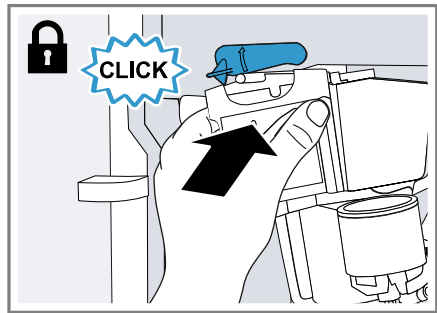
21



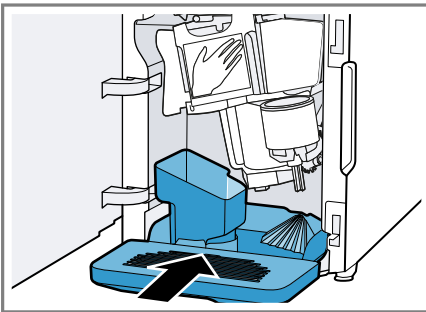
22



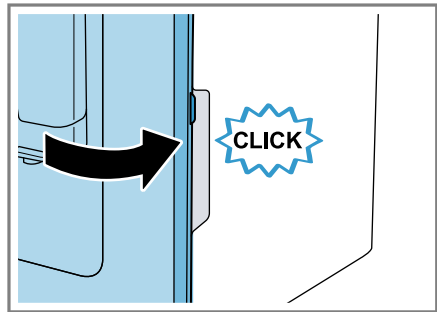
23



24



25



26

**Further information and explanations are available online:**



## Table of contents

<b>1 Safety .....</b>	<b>8</b>	7.4 Dispensing drinks with milk ....	17
1.1 General information.....	8	7.5 Dispensing a coffee drink with milk.....	18
1.2 Intended use.....	8	7.6 Frothing up milk .....	18
1.3 Restriction on user group.....	8	7.7 Drink settings .....	18
1.4 Safety information.....	8		
<b>2 Environmental protection and saving energy.....</b>	<b>12</b>	<b>8 Grinder.....</b>	<b>19</b>
2.1 Disposing of packaging .....	12	8.1 Adjusting the grinding level.....	19
2.2 Tips for saving energy.....	12	<b>9 Cup heater<sup>1</sup> .....</b>	<b>20</b>
<b>3 Installation and connection .....</b>	<b>12</b>	9.1 Activating and deactivating the cup heater <sup>1</sup> .....	20
3.1 Scope of delivery.....	12	<b>10 Basic settings.....</b>	<b>20</b>
3.2 Installing and connecting the appliance .....	12	10.1 Changing the basic set- tings.....	20
<b>4 Familiarising yourself with your appliance.....</b>	<b>13</b>	10.2 Overview of basic settings ....	21
4.1 Appliance .....	13	<b>11 Cleaning and servicing .....</b>	<b>21</b>
4.2 Control panel.....	13	11.1 Dishwasher-safe compon- ents.....	22
4.3 Display.....	14	11.2 Cleaning agent .....	22
<b>5 Accessories.....</b>	<b>14</b>	11.3 Cleaning the appliance .....	23
<b>6 Before using for the first time ..</b>	<b>15</b>	11.4 Cleaning the drip tray and coffee dregs container .....	23
6.1 Preparing and cleaning the appliance .....	15	11.5 Cleaning the milk frother.....	23
6.2 Performing initial start-up .....	15	11.6 Cleaning the brewing unit ....	24
6.3 General information.....	15	11.7 Service programmes.....	24
6.4 Water filter <sup>1</sup> .....	16	<b>12 Troubleshooting.....</b>	<b>26</b>
<b>7 Basic operation .....</b>	<b>17</b>	<b>13 Transportation, storage and disposal .....</b>	<b>31</b>
7.1 Switching the appliance on or off .....	17	13.1 Activating frost protection ....	31
7.2 Dispensing beverages .....	17	13.2 Disposing of old appliance ...	31
7.3 Dispensing a coffee drink made from fresh beans.....	17		

<sup>1</sup> Depending on the appliance specifications

- 14 Customer Service..... 32**
- 14.1 Product number (E-Nr.) and  
production number (FD)..... 32
- 14.2 Warranty conditions..... 33
- 15 Technical specifications..... 35**



# 1 Safety

---

Observe the following safety instructions.

## 1.1 General information

- Read this instruction manual carefully.
- Keep the instruction manual and the product information safe for future reference or for the next owner.
- Do not connect the appliance if it has been damaged in transit.

## 1.2 Intended use

Only use this appliance:

- for preparing hot drinks.
- in private households and in enclosed spaces in a domestic environment.
- up to an altitude of max. 2000 m above sea level.

## 1.3 Restriction on user group

This appliance may be used by children aged 8 or over and by people who have reduced physical, sensory or mental abilities or inadequate experience and/or knowledge, provided that they are supervised or have been instructed on how to use the appliance safely and have understood the resulting dangers.

Do not let children play with the appliance.

Children must not perform cleaning or user maintenance unless they are at least 8 years old and are being supervised.

Keep children under the age of 8 years away from the appliance and power cable.

## 1.4 Safety information

### **WARNING – Risk of suffocation!**

Children may put packaging material over their heads or wrap themselves up in it and suffocate.

- ▶ Keep packaging material away from children.
- ▶ Do not let children play with packaging material.

Children may breathe in or swallow small parts, causing them to suffocate.

- ▶ Keep small parts away from children.
- ▶ Do not let children play with small parts.

### **⚠ WARNING – Risk of electric shock!**

Incorrect installation is dangerous.

- ▶ Connect and operate the appliance only in accordance with the specifications on the rating plate.
- ▶ Connect the appliance to a power supply with alternating current only via a properly installed socket with earthing.
- ▶ The protective conductor system of the domestic electrical installation must be properly installed.

If the appliance or the power cord is damaged, this is dangerous.

- ▶ Never operate a damaged appliance.
- ▶ Never operate an appliance with a cracked or fractured surface.
- ▶ Never pull on the power cord to unplug the appliance. Always unplug the appliance at the mains.
- ▶ If the appliance or the power cord is damaged, immediately unplug the power cord or switch off the fuse in the fuse box.
- ▶ Call customer services. → *Page 32*

Improper repairs are dangerous.

- ▶ Repairs to the appliance should only be carried out by trained specialist staff.
- ▶ Only use genuine spare parts when repairing the appliance.
- ▶ If the power cord of this appliance is damaged, it must be replaced by the manufacturer, the manufacturer's Customer Service or a similarly qualified person in order to prevent any risk.

An ingress of moisture can cause an electric shock.

- ▶ Never immerse the appliance or the power cord in water.
- ▶ Liquids must not be spilled on the appliance plug connection.
- ▶ Only use the appliance in enclosed spaces.
- ▶ Never expose the appliance to intense heat or humidity.
- ▶ Do not use steam- or high-pressure cleaners to clean the appliance.

**⚠ WARNING – Risk of fire!**

The appliance will become hot.

- ▶ Ventilate the appliance adequately.
- ▶ Never operate the appliance in a cabinet.

It is dangerous to use an extended power cord and non-approved adapters.

- ▶ Do not use extension cables or multiple socket strips.
- ▶ Only use adapters and power cords approved by the manufacturer.
- ▶ If the power cord is too short and a longer one is not available, please contact an electrician to have the domestic installation adapted.

**⚠ WARNING – Risk of burns!**

Some parts of the appliance become very hot.

- ▶ Never touch hot appliance parts.
- ▶ After use, allow hot appliance parts to cool down before touching.

**⚠ WARNING – Risk of scalding!**

Freshly prepared drinks are very hot.

- ▶ Leave drinks to cool down if necessary.
- ▶ Do not let escaping liquids or steam come into contact with your skin.

**⚠ WARNING – Risk of injury!**

Improper use of the appliance may endanger the user.

- ▶ To avoid injuries, only use the appliance for its intended purpose.

Trapped fingers when closing the appliance door.

- ▶ Be careful of your fingers when closing the appliance door.

The grinder rotates.

- ▶ Never reach into the grinder.

** WARNING – Danger: Magnetism!**

The appliance contains permanent magnets. These may affect electronic implants, e.g. pacemakers or insulin pumps.

- ▶ People with electronic implants must stand at least 10 cm away from the appliance.
- ▶ This minimum distance of 10 cm must also be observed for the water tank when removed.

** WARNING – Risk of harm to health!**

During filtering there may be a slight increase in the potassium level, which is possibly not good for dialysis patients and people with kidney disease.

- ▶ Consult a doctor before use if you have kidney disease or follow a special potassium diet.

Soiling on the appliance may be harmful to health.

- ▶ To ensure hygiene, follow the cleaning instructions for the appliance.

Water from the hot water circuit can be harmful to health.

- ▶ Only ever use the appliance with fresh, cold, non-carbonated drinking water.

---

## 2 Environmental protection and saving energy

### 2.1 Disposing of packaging

The packaging materials are environmentally compatible and can be recycled.

- ▶ Sort the individual components by type and dispose of them separately.

### 2.2 Tips for saving energy

If you follow these instructions, your appliance will use less energy.

Set the interval for automatic switch-off to the smallest value.

- ✓ If the appliance is not being used, it will switch itself off earlier.  
→ "Basic settings", Page 20

Do not interrupt the dispensing process prematurely.

- ✓ The amount of water or milk that is heated is used optimally.

Descale the appliance regularly.

- ✓ Limescale deposits increase the appliance's energy consumption.

---

## 3 Installation and connection

### 3.1 Scope of delivery

After unpacking all parts, check for any damage in transit and completeness of the delivery.

**Note:** Different accessories are enclosed depending on the appliance model. This accessory is shown in a frame with a dashed line.

→ Fig. 1

---

<b>A</b>	Fully automatic coffee machine
<b>B</b>	Milk frother
<b>C</b>	User manual
<b>D</b>	Cleaning tablet <sup>1</sup>
<b>E</b>	Descaling tablet <sup>1</sup>
<b>F</b>	Water filter <sup>1</sup>

---

<sup>1</sup> Depending on the appliance specifications

### 3.2 Installing and connecting the appliance

#### ATTENTION!

Risk of damage to the appliance. If the appliance is not started up correctly, it may be damaged.

- ▶ Use the appliance in frost-free rooms only.
  - ▶ If the appliance has been transported or stored below 0°C, wait 3 hours at room temperature before starting it up.
  - ▶ After plugging in, always wait approx. 5 seconds.
1. Place the appliance on a level, water-resistant surface that is capable of bearing its weight.
  2. Using the mains plug, connect the appliance to an earthed socket that has been correctly installed.

## 4 Familiarising yourself with your appliance

### 4.1 Appliance

You can find an overview of the parts of your appliance here.

**Note:** Individual details and colours may differ, depending on the appliance model.


→ Fig. **2**

<b>1</b>	Water tank
<b>2</b>	Cover for water tank
<b>3</b>	Cup heater <sup>1</sup>
<b>4</b>	Display
<b>5</b>	Rotary selector for grinder setting
<b>6</b>	On/off button

<sup>1</sup> Depending on the appliance specifications

### 4.2 Control panel


You can use the control panel to configure all functions of your appliance and to obtain information about the operating status.

	Switch the appliance on or off.
Espresso	Dispense espresso.
Coffee	<ul style="list-style-type: none"> <li>■ Dispense coffee</li> <li>■ Display navigation "&lt;" back without saving</li> </ul>

<sup>1</sup> Depending on the appliance specifications



<b>7</b>	Aroma lid
<b>8</b>	Bean container
<b>9</b>	Control panel
<b>10</b>	Milk frother holder
<b>11</b>	Brewing unit
<b>12</b>	Rating plate
<b>13</b>	Milk frother
<b>14</b>	Outlet system
<b>15</b>	Brewing chamber door
<b>16</b>	Drip tray
<b>17</b>	Drip pan
<b>18</b>	Filling state indicator, mechanical
<b>19</b>	Drip grate
<b>20</b>	Coffee dregs container

<sup>1</sup> Depending on the appliance specifications



Cappuccino	<ul style="list-style-type: none"> <li>■ Dispense cappuccino</li> <li>■ Display navigation ▼ down</li> </ul>
Latte Macchiato	<ul style="list-style-type: none"> <li>■ Dispense latte macchiato</li> <li>■ Display navigation "ok" confirm and save</li> </ul>
Milk	Froth milk.
	Strength → "Adjusting the coffee strength", Page 18

<sup>1</sup> Depending on the appliance specifications

calc'n Clean	Start service programme. → <i>Page 24</i>
<sup>1</sup> Depending on the appliance specifications	

	Simultaneously dispense 2 cups of espresso or caffè crema. → <i>Page 19</i>
	Switch the cup heater <sup>1</sup> on or off.
<sup>1</sup> Depending on the appliance specifications	

## Display

	Lights up and display shows message	<ul style="list-style-type: none"> <li>■ Fill the water tank</li> <li>■ Water tank missing</li> <li>■ Change the water filter</li> </ul>
	<ul style="list-style-type: none"> <li>■ is lit</li> <li>■ is flashing</li> </ul>	<ul style="list-style-type: none"> <li>■ Empty trays</li> <li>■ Close the brewing chamber door</li> </ul>
LEDs	<ul style="list-style-type: none"> <li>■ are lit</li> <li>■ are pulsating</li> <li>■ are flashing</li> <li>■ are off</li> </ul>	<ul style="list-style-type: none"> <li>■ ready for use</li> <li>■ dispensing underway</li> <li>■ waiting for operation, e.g. with Calc'nClean</li> <li>■ not available</li> </ul>

### 4.3 Display

The display shows the selected drinks, settings and setting options, as well as messages about the appliance's operating status. The display shows additional information and action steps. The information is hidden after a short period or by

pressing a button. The action steps are hidden when they have been completed.

**Note:** If no display language is available in your national language, select a display language that is available, e.g. English.

## 5 Accessories

Use original accessories. These have been made especially for your appliance.

Accessories	Retail	Customer service
Cleaning tablets	TCZ8001A	00312096
Descaling tablets	TCZ8002A	00312093
Water filter	TCZ7003	17000705
Microfibre cloth	-	00460770
Care set	TCZ8004A	00312107

## 6 Before using for the first time

Prepare the appliance for use.

### 6.1 Preparing and cleaning the appliance

Remove the protective foils and clean the appliance and individual parts. Follow the illustrated instructions at the beginning of this manual.

#### ATTENTION!

Unsuitable beans can block the grinder.

- ▶ Only use pure, roasted bean mixes that are suitable for use in fully automatic coffee or espresso machines.
- ▶ Do not use glazed coffee beans.
- ▶ Do not use caramelised coffee beans.
- ▶ Do not use coffee beans that have been treated with additives containing sugar.
- ▶ Do not add instant coffee.

→ Fig. **3** - **10**

**Note:** Fill the water tank with fresh, cold, non-carbonated drinking water every day.

**Tip:** To keep the coffee beans at their best, store them in a sealed container in a cool place. You can keep the coffee beans in the bean container for several days without them losing their aroma.

### 6.2 Performing initial start-up

After connecting the appliance to the power supply, configure the settings for the language selection. The language selection step only appears when the machine is switched on for the first time.

1. Press **⏻** to switch on the appliance.
- ✓ The display will show the language that is preset.
2. Press **▼** button Cappuccino repeatedly until the display shows the required language.
3. To confirm that you want to use these settings, press "ok" button Latte Macchiato.
- ✓ The appliance is rinsed. When the display shows "Choose beverage", the appliance is ready for use.

**Tip:** You can change the language at any time.

→ "Basic settings", Page 20

### 6.3 General information

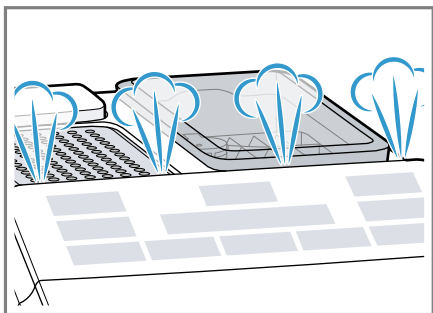
Please bear this information in mind so that you can get the best out of your appliance.

#### Notes

- The appliance has been programmed at the factory with standard settings for optimum operation.
- The grinder has been factory-set for optimum operation. If coffee is only dispensed drop by drop or is too thin and with too little crema, you can adjust the grinding level when the grinder is running.  
→ "Adjusting the grinding level", Page 19
- During operation water droplets may form at the ventilation slits.
- If you do not perform any actions on the appliance for a certain period, it will switch off automatically. You can change the duration in the basic settings. → Page 20

**en** Before using for the first time

- For technical reasons steam can escape from the appliance.



- If you press a button, a signal tone sounds. You can deactivate the signal tone in the basic settings.

**Tip:** Check and set the water hardness before using your appliance.

#### Note

The first beverage will not yet have its full aroma if:

- You are using the appliance for the first time.
- You have run a service programme.
- You have not used the appliance for a long time.

Do not drink the beverage.

**Tip:** You will get a stable, fine-pored crema after you have started up your appliance and dispensed a few cups.

## 6.4 Water filter<sup>1</sup>

You can use a water filter to minimise limescale deposits and reduce impurities in the water.

The limescale content of the water influences the aroma and crema of coffee. There is an aroma ring on the underside of the BRITA INTENZA water filter. Turn the aroma ring to set the optimum aroma level for your mains water.

## Inserting or replacing a water filter







If you have to change the inserted water filter,  lights up on the display.

### ATTENTION!

Possible damage to the appliance due to limescale build-up.

- ▶ Change the water filter in good time.
- ▶ Change the water filter after 2 months at the latest.
- ▶ Observe the display messages.

**Requirement:** The appliance is switched on.

1. Press and hold buttons  and  simultaneously for at least 3 seconds.
  2. Press  button Cappuccino until the display shows "W. hardness".
  3. Confirm with "ok" button Latte Macchiato.
  4. Press  button Cappuccino until the display shows "Water filter".
  5. Confirm with "ok" button Latte Macchiato.
- ✓ The display shows "Filter act.".
6. Immerse the water filter in a glass of water with the opening facing up and press the sides together lightly until no more air bubbles rise to the surface.  
→ "Water filter", Page 16  
→ Fig. 
  7. Set the water hardness on the aroma ring of the water filter.
    - Press the water filter firmly into the empty water tank.→ Fig. 
- You can find out the water hardness from your local water supplier.

<sup>1</sup> Depending on the appliance specifications

8. Fill the water tank with water up to the max mark.
9. Insert water tank into the appliance.
10. Place a container with a capacity of at least 1 l under the outlet.
11. Press the "ok" button Latte Macchiato to save the setting and start rinsing.
  - ✓ Water will now flow through the filter.
12. Press "<" button Coffee to exit the menu.
13. Empty the container.
  - ✓ The appliance is ready to use.

### Removing the water filter

You can also operate your appliance without a water filter.

1. Remove the water filter.
2. Set the water hardness.  
→ "Basic settings", Page 20


### Tips

- You should also change your water filter for reasons of hygiene.
- With a water filter you need to descale your appliance less frequently.
- If you use a water filter, your coffee will be more flavoursome.
- The water filter can be purchased from retailers or customer service.  
→ "Accessories", Page 14

---

## 7 Basic operation

### 7.1 Switching the appliance on or off

- ▶ Press .
- When the appliance is switched on or off, it will rinse itself automatically. When switched off, the appliance will emit steam into the drip

tray for cleaning. The appliance will not rinse itself if the appliance is still warm when switched on or if no beverage was dispensed before it was switched off.

### 7.2 Dispensing beverages


Find out how to prepare a drink of your choice.

#### **WARNING** **Risk of scalding!**

Freshly prepared drinks are very hot.

- ▶ Leave drinks to cool down if necessary.
- ▶ Do not let escaping liquids or steam come into contact with your skin.

### 7.3 Dispensing a coffee drink made from fresh beans

1. Place a cup under the outlet system.
2. To set the coffee strength, press the  button repeatedly.
3. Press button Espresso or Coffee.
  - ✓ The coffee is brewed and then dispensed into the cup.

**Tip:** To stop the current dispensing step early, press the Espresso or Coffee button.

### 7.4 Dispensing drinks with milk

You can make coffee drinks with milk or froth up milk.

#### **WARNING** **Risk of burns!**

The milk frother gets very hot.

- ▶ Let the milk frother cool down before you touch it.

### ATTENTION!

Milk residues can dry on surfaces and are difficult to remove.

- ▶ Clean the milk frother after each use.

### Tips

- You can also use plant-based alternatives to milk, e.g. soya milk.
- The quality of the milk froth depends on the type of milk or plant-based alternative used.

## 7.5 Dispensing a coffee drink with milk

You can choose between cappuccino and latte macchiato.

1. Fill a large cup or large glass with approx. 100 ml milk for cappuccino or approx. 150 ml milk for latte macchiato.
  2. Place the cup or glass under the outlet system.
  3. Slide the outlet system and milk frother right down.
  4. To set the coffee strength, press the  $\emptyset$  button repeatedly.
  5. Press button Cappuccino or Latte Macchiato.
- ✓ The milk is first frothed up in the cup or glass. The coffee is then brewed and dispensed into the cup or the glass.

**Tip:** To stop the current dispensing step early, press the Cappuccino or Latte Macchiato button.

## 7.6 Frothing up milk

1. Fill a large cup or large glass with approx. 100 ml milk.
2. Place the cup or glass under the outlet system.
3. Slide the outlet system and milk frother right down.

4. Press the Milk button.
- ✓ The milk is frothed up.

**Note:** To stop the dispensing process early, press the Milk button.







## 7.7 Drink settings

Prepare a drink according to your taste.

### Adjusting the coffee strength

Before making a drink, you can adjust the coffee strength.

- ▶ To adjust the coffee strength, press the  $\emptyset$  button repeatedly.

	Very mild
	Mild
	Normal
	Strong
	Very strong
	aromaIntense <sup>1</sup>

<sup>1</sup> Depending on the model

**Note:** The coffee strength selected is then active for all drinks made with coffee.

### Adjusting the filling level

You can adjust the filling level of your drinks.

1. Place a cup under the outlet system.
  2. Press and hold button Espresso or Coffee for 3 seconds.
- ✓ Dispensing takes place, with the button selected flashing.
  - ✓ The display shows the progress.  
→ Fig. 11
3. Once the required filling level is reached, press the button selected to stop.

## Notes

- The new filling level is only apparent when the next drink is dispensed.
- You can set the filling level 25-60 ml for espresso or 80-200 ml for coffee.
- The appliance always brews a minimum quantity of approx. 25 ml for espresso and approx. 80 ml for coffee.

**Tip:** You can change the settings at any time.

→ "Basic settings", Page 20

## Adjusting the frothing time

You can adjust the frothing time of your drinks.

1. Fill a large cup or large glass with approx. 100 ml milk for cappuccino or approx. 150 ml milk for latte macchiato.
2. Place the cup or glass under the outlet system.
3. Slide the outlet system and milk frother right down.
4. Press and hold button Cappuccino, Latte Macchiato or Milk for 3 seconds.
  - ✓ The milk is frothed up, and the button selected flashes.
  - ✓ The display shows the progress.
    - Fig. **11**
5. Once the required frothing time is reached, press the button selected to stop.

## Notes

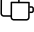

- You can set a limited time depending on the drink.
- Setting the frothing time has no impact on the filling level.

**Tip:** You can change the settings at any time.

→ "Basic settings", Page 20

## Dispensing two cups at once

Depending on your beverage, you can make 2 cups at the same time.

1. Press the  button.
  - ✓ The display shows "Double cup on" for 5 seconds.
2. Place two cups on the left and right under the outlet system.
3. Press button Espresso or Coffee.
  - ✓ The LED in the button pulses.
  - ✓ The drink is prepared in 2 steps. The beans are ground in 2 grinding operations.
  - ✓ The beverages are brewed and then run into the cups.
4. Wait until the process is complete.
5. To switch off the double cup function, press the  button.

## Notes

- You can set the double cup function for Espresso or Coffee only.
- If you have set the double cup function, you cannot dispense other drinks.
- If you do not press any other button within 90 seconds, the appliance automatically switches to the "Double cup off" setting.

---

## 8 Grinder

Your appliance has an adjustable grinder, which you can use to customise the grinding level of your coffee beans.

### 8.1 Adjusting the grinding level

Set the desired grinding level while the coffee beans are being ground.

**⚠ WARNING**  
**Risk of injury!**

The grinder rotates.

- ▶ Never reach into the grinder.

**ATTENTION!**

Risk of damage to the grinder. The grinder may be damaged if the grinding level is not set properly.

- ▶ Only set the grinding level when the grinder is running.
- ▶ Select the grinding level using the rotary selector step by step.

---

**Grinding level Setting**

---

Fine grinding level for lightly roasted beans      Turn rotary selector anticlockwise.



---

Coarse grinding level for dark-roasted beans      Turn rotary selector clockwise.



---

The grinding level setting only takes effect after the second cup.

**Tip:** If the coffee is only dispensed drop by drop, set a coarser grinding level.

If the coffee is dispensed too quickly and with too little crema, set a finer grinding level.

---

## 9 Cup heater<sup>1</sup>

You can use the cup heater to pre-heat your cups.


## 9.1 Activating and deactivating the cup heater<sup>1</sup>

**⚠ WARNING**  
**Risk of burns!**

The cup heater<sup>1</sup> can become very hot.

- ▶ Never touch the cup heater<sup>1</sup> while hot.
- ▶ Allow the hot cup heater<sup>1</sup> to cool down before touching it.

**Tip:** Place the cups with their base on the cup heater to warm them to optimum effect<sup>1</sup>.

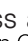
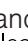


- ▶ To activate or deactivate the cup heater<sup>1</sup>, press the  button.

---

## 10 Basic settings

You can configure the basic settings for your appliance to meet your needs and call up additional functions.

### 10.1 Changing the basic settings

1. Press and hold buttons  and  simultaneously for at least 3 seconds.
  2. Press  button Cappuccino repeatedly until the display shows the required setting.
  3. Confirm with "ok" button Latte Macchiato.
  4. Press the  button Cappuccino to change the setting.
  5. Confirm with "ok" button Latte Macchiato.
- ✓ The display shows "Settings saved".

---

<sup>1</sup> Depending on the appliance specifications

6. Press "<" button Coffee to exit the menu.

**Note:** If you do not press any other button within 90 seconds, the appliance switches to the select beverage setting without saving.

**Tip:** You can change the settings at any time.

→ "Basic settings", Page 20

## 10.2 Overview of basic settings

You can find an overview of the basic settings here.

Setting	Selection	Description
Language	See selection on the appliance	Set menu language. Changes are immediately displayed.
Factory reset	Select the required language.	Restore settings to the factory settings. <b>Note:</b> The appliance rinses and deletes all individual settings.
W. hardness	<ul style="list-style-type: none"> <li>■ "W. hardness" 1, 2, 3, 4</li> <li>■ Water filter</li> <li>■ H2O-Softener</li> </ul>	Set the appliance to the local water hardness. <b>Tip:</b> Ask your local water supplier about the water hardness. <b>Note:</b> If a water softening system is installed in your house, select "H2O-Softener".
Auto Stand-by	See selection on the appliance	Set how long the appliance should wait after preparing the last beverage before automatically switching itself off.
Sound	<ul style="list-style-type: none"> <li>■ Sound on</li> <li>■ Sound off</li> </ul>	Switch the tones on or off.

## 11 Cleaning and servicing

To keep your appliance working efficiently for a long time, it is important to clean and maintain it carefully.

## 11.1 Dishwasher-safe components

Here you can find an overview of the components you can clean in the dishwasher.

### ATTENTION!

Some components are sensitive to heat and may be damaged if they are cleaned in a dishwasher.

- ▶ Follow the operating instructions of the dishwasher.

- ▶ Only clean dishwasher-safe components in the dishwasher.
- ▶ Only use programmes that do not heat the components above 60 °C.

Suitable: 

- Drip plate
- Drip grate
- Coffee dregs container
- Mechanical fill level indicator
- Milk frother

Not suitable: 

- Water tank
- Water tank lid
- Aroma lid
- Brewing unit
- Drip tray

## 11.2 Cleaning agent

Only use suitable cleaning agents.

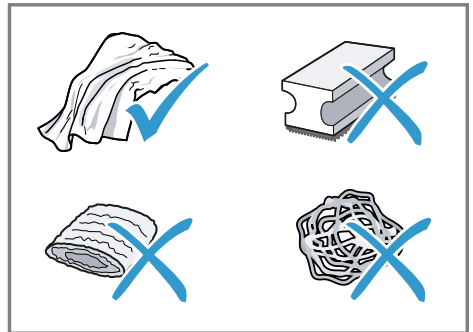
### ATTENTION!

Unsuitable cleaning products may damage the surfaces of the appliance.

- ▶ Do not use harsh or abrasive detergents.
- ▶ Do not use cleaning agents containing alcohol or spirits.
- ▶ Do not use hard scouring pads or cleaning sponges.

Unsuitable cleaning and descaling agents may damage the appliance.

- ▶ Do not use pure citric acid, vinegar or any vinegar-based agents to descale the appliance.
- ▶ Do not use descaling agent with phosphoric acid.
- ▶ Only use cleaning tablets and descaling tablets that have been specially developed for the appliance.  
→ "Accessories", Page 14



### Tips

- Wash new sponge cloths thoroughly to remove any salt adhering to them. Salt can cause rust film to develop on stainless steel surfaces.
- Always remove any residues of limescale, coffee, milk and cleaning/descaling solutions immediately to prevent corrosion.

## 11.3 Cleaning the appliance

### WARNING

#### Risk of electric shock!

An ingress of moisture can cause an electric shock.

- ▶ Never immerse the appliance or the power cord in water.
- ▶ Liquids must not be spilled on the appliance plug connection.
- ▶ Do not use steam- or high-pressure cleaners to clean the appliance.

### WARNING

#### Risk of burns!

Some parts of the appliance become very hot.

- ▶ Never touch hot appliance parts.
  - ▶ After use, allow hot appliance parts to cool down before touching.
1. Disconnect the appliance from the mains power supply.
  2. Clean the housing, the high-gloss surfaces and the control panel with a microfibre cloth.
  3. Clean the outlet system with a soft, damp cloth after beverages have been dispensed.
  4. Rinse the water tank with fresh, clean water.
  5. If the appliance has not been used for a long time, e.g. after a holiday, clean the entire appliance, including moving parts such as the brewing unit or water tank.

**Note:** The appliance will rinse itself automatically if you switch it on when it is cold or switch it off after it has dispensed coffee. The system is therefore self-cleaning.

## 11.4 Cleaning the drip tray and coffee dregs container

Clean and empty the drip tray and coffee dregs container every day to prevent deposits. Follow the illustrated instructions at the beginning of this manual.

→ Fig. **12** - **16**

## 11.5 Cleaning the milk frother

Clean the milk frother after each use to remove residues and ensure its proper function.

### WARNING

#### Risk of burns!

The milk frother gets very hot.

- ▶ Let the milk frother cool down before you touch it.
1. Fill a glass half-full with water and place under the outlet system.
  2. Push the milk frother right down.
  3. Press the Milk button.
  - ✓ Milk system is cleaned.
  4. Push the milk frother right up and allow it to cool down.
  5. Remove the milk frother and clean it thoroughly.
  6. Attach the milk frother again.

**Note:** To stop the process early, press the Milk button.

**Tip:** You can clean the milk frother in the dishwasher. After rinsing, remove the detergent residues thoroughly from the milk frother.

## 11.6 Cleaning the brewing unit

In addition to automatic rinsing, also remove and clean the brewing unit regularly. Follow the illustrated instructions at the beginning of the manual.

### **⚠ WARNING** **Risk of burns!**

Some parts of the appliance become very hot.

- ▶ Never touch hot appliance parts.
- ▶ After use, allow hot appliance parts to cool down before touching.

### **ATTENTION!**

The brewing unit may be damaged by improper cleaning.

- ▶ Do not use washing-up liquid.
- ▶ Do not use cleaning agents containing vinegar or acids.
- ▶ Do not clean in the dishwasher.

→ Fig. **17** - **26**

**Note:** The door can only be closed if the brewing unit and drip tray are inserted correctly.

## 11.7 Service programmes

The calc'n Clean button lights up and the display shows "Calc'nClean required!" depending on the water hardness and use of your appliance. Use the programme to descale and clean your appliance.

### **ATTENTION!**

Improper cleaning and descaling or a delay in doing so may damage the appliance.

- ▶ Perform Calc'nClean according to the instructions immediately.
- ▶ Only put cleaning tablets in the duct of the brewing unit.

- ▶ Do not put descaling tablets or other products in the duct of the brewing unit.


### **Notes**

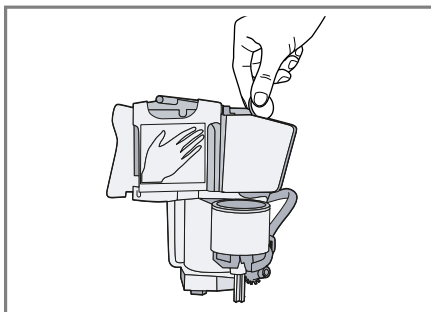
- If you do not descale and clean the appliance in good time, the appliance is locked and the display shows "Device locked".
- To unlock the appliance, run the service programme.


**Tip:** Before you start the service programme, remove, clean and re-insert the brewing unit. Clean the milk frother.



### **Start Calc'nClean**


The process takes approx. 40 minutes.

1. Press and hold the calc'n Clean button for at least 5 seconds.  
✓  symbol lights up.
2. Open the door.
3. Remove and empty the drip tray and coffee dregs container.
4. Remove and clean the brewing unit.
5. Put a cleaning tablet into the duct of the brewing unit and re-insert the brewing unit.




6. Insert the drip tray and coffee dregs container again and close the door.  
✓  symbol lights up.
7. If there is a water filter, remove it.

8. Fill the empty water tank with luke-warm water up to the mark and dissolve a Bosch descaling tablet in it.
9. Reinsert the water tank and place a container with approx. 1 l capacity under the outlet system.
10. When calc'n Clean flashes, press the calc'n Clean button.
  - ✓ The programme starts, cleans and descales the appliance.
  - ✓ calc'n Clean pulses.
  - ✓ The process takes approximately 20 minutes.
  - ✓  symbol lights up.
11. Empty the container and open the door.
12. Empty the drip tray and re-insert.
13. Close the door and place the container under the outlet system again.
  - ✓  symbol lights up.
14. Clean the water tank.
 

If you have removed the water filter, re-insert the water filter.
15. Fill the water tank with fresh, cold, non-carbonated drinking water up to the max mark.
16. When calc'n Clean flashes, press the calc'n Clean button.
  - ✓ The programme starts, cleans and rinses the appliance.
  - ✓ calc'n Clean pulses.
  - ✓  symbol lights up.
17. Remove and empty the drip tray and coffee dregs container.
18. Clean the drip tray and the coffee dregs container and re-insert them in the appliance.
  - ✓ The programme has ended and the appliance is ready for operation again.

## Resetting a service programme

If the service programme is interrupted, e.g. by a power cut, calc'n Clean and  will light up.

1. Clean the water tank.
 

If you have removed the water filter, re-insert the water filter.
2. Fill the water tank with fresh, cold, non-carbonated drinking water up to the max mark.
3. Press the calc'n Clean button.
  - ✓ The service programme starts and rinses the appliance. The process takes approximately 2 minutes.
4. Empty the drip tray, clean it and re-insert.
5. Close the door.
  - ✓ The programme has ended and the appliance is ready for operation again.

## 12 Troubleshooting

You can rectify minor faults on your appliance yourself. Read the troubleshooting information before contacting after-sales service. This will avoid unnecessary costs.

### **WARNING**

#### **Risk of electric shock!**

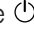
Improper repairs are dangerous.




- ▶ Repairs to the appliance should only be carried out by trained specialist staff.
- ▶ Only use genuine spare parts when repairing the appliance.
- ▶ If the power cord of this appliance is damaged, it must be replaced by the manufacturer, the manufacturer's Customer Service or a similarly qualified person in order to prevent any risk.

<b>Fault</b>	<b>Cause and troubleshooting</b>
Appliance no longer responds.	Appliance has a fault. <ol style="list-style-type: none"> <li>1. Pull out the mains plug and wait 60 seconds.</li> <li>2. Re-insert the mains plug.</li> </ol>
Appliance only dispenses water, not coffee.	Empty bean container is not detected by the appliance. <ul style="list-style-type: none"> <li>▶ Pour in coffee beans.</li> </ul> <hr/> Coffee beans are too oily and do not fall into the grinder. <ul style="list-style-type: none"> <li>▶ Gently tap the bean container.</li> <li>▶ Change the coffee variety.</li> <li>▶ Do not use oily beans.</li> <li>▶ Clean the empty bean container with a damp cloth.</li> </ul> <hr/> Brewing unit is not inserted properly. <ul style="list-style-type: none"> <li>▶ Slide the brewing unit right back.</li> </ul>
Coffee or milk froth quality varies widely.	Build-up of limescale in the appliance. <ul style="list-style-type: none"> <li>▶ Descale the appliance.</li> </ul>
Coffee is not dispensed or has slowed to a trickle.	Grinding level is set too fine. <ul style="list-style-type: none"> <li>▶ Set a coarser grinding level.                              → <i>"Adjusting the grinding level", Page 19</i></li> </ul>
Set quantity is not reached.	Heavy build-up of limescale in the appliance. <ul style="list-style-type: none"> <li>▶ Descale the appliance.</li> </ul> <hr/> Air is in the water filter. <ol style="list-style-type: none"> <li>1. Immerse the water filter in water with the opening facing upwards until no more air bubbles escape.</li> <li>2. Reinsert the filter.</li> </ol>

<b>Fault</b>	<b>Cause and troubleshooting</b>
Coffee is not dispensed or has slowed to a trickle. Set quantity is not reached.	Appliance is soiled. ▶ Clean the brewing unit. ▶ Descale and clean the appliance. <hr/> Residues of limescale remover are blocking the water tank. <b>1.</b> Remove the water tank. <b>2.</b> Clean the water tank thoroughly. <hr/> Coffee strength is set too high. ▶ Reduce the coffee strength.
Milk or milk-based drinks are too hot. Milk froth is too thin, and there is a loud suction noise.	There is too little milk in the glass or cup. <b>1.</b> Use more milk. <b>2.</b> Change the frothing time.
Milk or milk-based drinks are too cold.	There is too much milk in the glass or cup. <b>1.</b> Use less milk. <b>2.</b> Change the frothing time. <hr/> Milk in the glass or cup is too cold. ▶ Use lukewarm milk.
Coffee has no crema.	Type of coffee is not optimal. ▶ Use a coffee variety with a higher proportion of Robusta beans. <hr/> Coffee beans are no longer freshly roasted. ▶ Use fresh coffee beans. <hr/> Grinding level is not appropriate for coffee beans. ▶ Adjust the grinder to a finer setting. → <i>"Adjusting the grinding level", Page 19</i>
Coffee is too acidic.	Grinding level is set too coarse. ▶ Adjust the grinder to a finer setting. → <i>"Adjusting the grinding level", Page 19</i> <hr/> Type of coffee is not optimal. ▶ Use a coffee variety with a higher proportion of Robusta beans.
Coffee is too bitter.	Grinding level is set too fine. ▶ Set a coarser grinding level. → <i>"Adjusting the grinding level", Page 19</i> <hr/> Type of coffee is not optimal. ▶ Change the coffee variety.

Fault	Cause and troubleshooting
Coffee tastes burnt.	<p>Grinding level is set too fine.</p> <ul style="list-style-type: none"> <li>▶ Set a coarser grinding level. → <i>"Adjusting the grinding level", Page 19</i></li> </ul> <hr/> <p>Type of coffee is not optimal.</p> <ul style="list-style-type: none"> <li>▶ Change the coffee variety.</li> </ul>
Milk froth quality varies widely.	<p>Milk froth quality depends on the type of milk or plant-based alternative used.</p> <ul style="list-style-type: none"> <li>▶ Optimise the result through the selection of the milk or vegetable-based drink type.</li> </ul>
Appliance is not dispensing milk froth.	<p>Heavy build-up of limescale in the appliance.</p> <ul style="list-style-type: none"> <li>▶ Descale the appliance.</li> </ul> <hr/> <p>Milk frother is soiled.</p> <ul style="list-style-type: none"> <li>▶ Clean the milk frother in the dishwasher.</li> </ul> <hr/> <p>Milk frother is not inserted in the milk.</p> <ol style="list-style-type: none"> <li>1. Use more milk.</li> <li>2. Check whether the milk frother is inserted in the milk.</li> <li>3. Slide the outlet system down completely.</li> </ol>
Appliance is not dispensing drinks.	<p>Air is in the water filter.</p> <ol style="list-style-type: none"> <li>1. Immerse the water filter in water with the opening facing upwards until no more air bubbles escape.</li> <li>2. Reinsert the filter.</li> </ol> <ul style="list-style-type: none"> <li>▶ Firmly press the water filter straight down into the tank connection.</li> </ul> <hr/> <p>Residues of limescale remover are blocking the water tank.</p> <ol style="list-style-type: none"> <li>1. Remove the water tank.</li> <li>2. Clean the water tank thoroughly.</li> </ol>
There is dripping water on the inner floor of the appliance.	<p>Drip tray was removed too soon.</p> <ul style="list-style-type: none"> <li>▶ Wait a few seconds after the last drink was dispensed before removing the drip tray.</li> </ul>
Brewing unit cannot be removed.	<p>Locking device cannot be released, brewing unit is jammed.</p> <ul style="list-style-type: none"> <li>▶ Switch the appliance off and back on after 3 minutes.</li> </ul>
Grinder won't start.	<p>Appliance is too hot.</p> <ol style="list-style-type: none"> <li>1. Disconnect the appliance from the mains.</li> <li>2. Wait 1 hour so the appliance can cool down.</li> </ol>

<b>Fault</b>	<b>Cause and troubleshooting</b>
Display shows "Fill water tank" despite the water tank being full.	<p>Water tank is wrongly inserted.</p> <ul style="list-style-type: none"> <li>▶ Insert the water tank correctly.</li> </ul> <hr/> <p>Carbonated water is in the water tank.</p> <ul style="list-style-type: none"> <li>▶ Fill the water tank with fresh drinking water.</li> </ul> <hr/> <p>Float is stuck in the water tank.</p> <ol style="list-style-type: none"> <li>1. Remove the water tank.</li> <li>2. Clean the water tank thoroughly.</li> </ol> <hr/> <p>New water filter was not rinsed as per instructions.</p> <ol style="list-style-type: none"> <li>1. Rinse the water filter according to the instructions.</li> <li>2. Place the water filter into operation.</li> </ol> <hr/> <p>Air is in the water filter.</p> <ol style="list-style-type: none"> <li>1. Immerse the water filter in water with the opening facing upwards until no more air bubbles escape.</li> <li>2. Reinsert the filter.</li> </ol> <hr/> <p>Water filter is old.</p> <ul style="list-style-type: none"> <li>▶ Insert a new water filter.</li> </ul> <hr/> <p>Limescale deposits in the water tank are blocking the system.</p> <ol style="list-style-type: none"> <li>1. Clean the water tank thoroughly.</li> <li>2. Start the Calc'nClean service programme.</li> </ol>
Display shows "Clean brewing unit".	<p>Brewing unit is soiled.</p> <ul style="list-style-type: none"> <li>▶ Clean the brewing unit.</li> </ul> <hr/> <p>Mechanism of brewing unit is stiff.</p> <ul style="list-style-type: none"> <li>▶ Clean the brewing unit.</li> </ul>
Display shows "Incorrect voltage".	<p>There are problems with the power supply.</p> <ul style="list-style-type: none"> <li>▶ Only operate the appliance at 220 - 240 V.</li> </ul>
Display shows "Calc'nClean required!" very frequently.	<p>Decalcified water still contains small amounts of lime.</p> <ol style="list-style-type: none"> <li>1. Insert a new water filter.</li> <li>2. Set the corresponding water hardness.</li> </ol> <hr/> <p>Incorrect or too little descaling agent used.</p> <ul style="list-style-type: none"> <li>▶ When descaling, only use suitable tablets.</li> </ul>
Appliance cannot be operated. Change displays.	<p>Appliance is in demo mode.</p> <ol style="list-style-type: none"> <li>1. To deactivate demo mode, press and hold the  button for at least 5 seconds.</li> <li>2. Remove the water tank.</li> <li>3. Fill the water tank with fresh water.</li> <li>4. Re-insert the water tank.</li> </ol>

Fault	Cause and troubleshooting
Display shows "Close door" despite the fact that the door is closed.	Door is not properly closed. ▶ Press the door firmly shut.
Display shows "Empty trays" despite the fact that the drip tray is empty.	Appliance is too hot. 1. Disconnect the appliance from the mains. 2. Wait 1 hour so the appliance can cool down.
Display shows "Fill water tank" and LEDs flashing.	Appliance is switched off and does not detect emptying. 1. Switch the appliance on, and remove the drip tray. 2. Re-insert the drip tray.
Display shows "Device too cold".	Water tank is missing or wrongly inserted. ▶ Insert the water tank correctly.
Display shows "Re-start appliance". LEDs flashing.	Pipe system in the appliance is dry. ▶ Fill the water tank with fresh, cold, non-carbonated drinking water.
Display shows "Re-start appliance". No LED is lit.	Air is in the water filter. 1. Immerse the water filter in water with the opening facing upwards until no more air bubbles escape. 2. Reinsert the filter.
Display shows "Clean/ fill water tank"; calc'n Clean and  light up.	Ambient temperature is too cold. ▶ Operate the appliance at temperatures over 5 °C.
Display shows "Clean/ fill water tank"; calc'n Clean and  light up.	Brewing unit is heavily soiled or cannot be removed. ▶ Restart the appliance. ▶ Clean the brewing unit.
Display shows "Re-start appliance". No LED is lit.	Appliance has a fault. ▶ Restart the appliance.
Display shows "Clean/ fill water tank"; calc'n Clean and  light up.	Descaling process has been interrupted. ▶ Proceed as described in section → "Resetting a service programme", Page 25.

## 13 Transportation, storage and disposal

### 13.1 Activating frost protection



Protect your appliance from frost during transport and storage.

#### ATTENTION!

Residues of liquid in the appliance may damage it during transport or storage.

- ▶ Empty the pipe system before transport or storage.

#### Requirements

- The appliance is ready to use.
  - The water tank has been filled.
1. Place a large container under the outlet system and push the milk frother down.
  2. Press and hold the Milk button for at least 5 seconds.
    - ✓ The LED in the button flashes, and the appliance heats up.
  3. When steam escapes from the milk frother, remove the water tank.
  4. Allow the appliance to cool down and wait until the display shows  "Water tank empty".
  5. Use  to switch the appliance off.
  6. Empty the water tank and the drip tray and thoroughly clean the appliance.
  7. Disconnect the appliance from the mains power supply.

You can now transport or store the appliance.

**Note:** The brewing unit is now secured and you cannot remove it.

### 13.2 Disposing of old appliance

Valuable raw materials can be re-used by recycling.

1. Unplug the appliance from the mains.
2. Cut through the power cord.
3. Dispose of the appliance in an environmentally friendly manner.

Information about current disposal methods are available from your specialist dealer or local authority.



Dispose of packaging in an environmentally-responsible manner. This appliance is certified in accordance with the guidelines on E-waste (Management ) Rules 2022 which govern waste electrical and electronic equipment. The guideline provide a framework for the return and recycling of used appliances.

**Note:** This product doesn't contain any of hazardous substances as specified in the e-waste Management and Handling Rules 2022.

Dos

- Please visit our website <https://www.bosch-home.in/metapages/e-waste-management> to find out more details regarding e-waste disposal.
- Keep the product in isolated area, after it becomes non-func-

tional/un-repairable so as to prevent its accidental breakage.

- Consult the authorized service center as to whether the Electronic Equipment can be repaired or not, before discarding.
- Consult the retailer about appliance take back schemes.

#### Don'ts

- The product should not be opened by the user himself/herself, but only by authorized service personnel.
- The product is not meant for re-sale to any unauthorized agencies/scrap dealers/kabariwalah.
- Don't dispose of the discarded Electronic Equipment in household bins or Municipal bins.
- Don't dump the discarded Electronic Equipment in the open or in any land fill site, as this will result in contamination of the soil and the ground water.
- Do not keep any replaced spare part(s) from the product in exposed area.

---

## 14 Customer Service

Detailed information on the warranty period and terms of warranty in your country is available from our after-sales service, your retailer or on our website.

If you contact Customer Service, you will require the product number (E-Nr.) and the production number (FD) of your appliance.

The contact details for Customer Service can be found in the Customer Service directory at the end of the manual or on our website.

Helpline no.: 1800-266-1880

(Monday to Saturday – 8 am to 8 pm)

Email ID: [service.in@bosch-home.com](mailto:service.in@bosch-home.com)

Chat with us (WhatsApp):

+91-8451000555



### 14.1 Product number (E-Nr.) and production number (FD)

You can find the product number (E-Nr.) and the production number (FD) on the appliance's rating plate.

Make a note of your appliance's details and the Customer Service telephone number to find them again quickly.

## 14.2 Warranty conditions

### Warranty Terms & Conditions:

1. The warranty period for this product will be for 2 years from the date of purchase.
2. The warranty can be availed only by the first purchaser of the appliance and is non-transferable.
3. The warranty covers manufacturing defect in material and workmanship that arises despite normal operation and usage of the appliance as prescribed in the operating manual.
4. In case of the product being tampered with or attempted to be repaired by unauthorised personnel, then the warranty terms will be void and the company shall have no further obligations under warranty. Further, the customer waives all rights against the company which has arisen due to the breach of the warranty terms by the customer.
5. In the event that the company decides to provide a replacement/ refund of the product during this warranty period, customers are mandated to carry the product to the specified service centre/ authorised dealer at their own cost.
6. The warranty coverage is not applicable outside India.
7. In case of replacement, the replaced product will be warranted only for the remaining of the original warranty period
8. The Company shall not have any liability nor deemed to be in default of warranty obligations for any delay or failure in performance of warranty obligations resulting from causes beyond its reasonable control (e.g. strikes, floods, earthquakes etc.) including delay in servicing due to non-availability of product.
9. The Company gives no warranties other than those stated above and specifically excludes any implied warranty of fitness for any particular purpose.
10. In the event of change of address, the new address shall be intimated to the given toll-free number.
11. In case repair cannot be completed onsite, the company reserves the right to carry the appliance to its Authorized Service Center and return the same after repair.

### Warranty is not applicable in any of the following cases:

1. The warranty card is not duly filled and does not bear the stamp, date and signature of an Authorised Dealer.
2. The warranty does not cover any consequential or resulting liability, damage or loss to property or life arising directly or indirectly as a result of appliance failure, breakdown, or accident or usage of the appliance not in accordance with the operating manual.
3. The appliance has been subjected to improper use such as not following DFU/ User Manual provided by the company, misused, not cared for, abnormal use, exposure to dampness, excessive heat, excessive humidity and other extreme environmental conditions, corrosion, damage beyond repair, rusting, unauthorised modifications, unauthorised repairs, neglect, accident, alteration, acts of God, spillage of liquid or food particles, faulty electric wiring/ cabling, abnormal voltage/ power supply beyond appliance specifications, damage/ breakage/ non-functioning of appliance due to rodents, rats, cockroaches and ants etc.
4. The warranty does not cover consumables, normal wear & tear parts, plastic, glass and/ or rubber parts, non-operational parts and related accessories.
5. The warranty does not include preventive checks, routine maintenance, cleaning, de-scaling and overhaul.
6. The appliance is used by a commercial establishment or by an individual for commercial purpose.
7. The serial number of the appliance is removed, altered, made illegible/tampered with.
8. Damage to the product or any parts due to transportation or shifting or arising out of improper storage of the appliance at the customer's premises.

### Important: Please present this warranty card to our staff at the time of service.

#### 1) Contact the following for availing the support of your Product:

1-800-266-1880(toll free) Monday – Saturday – 8:00 am to 8:00pm

#### 2) Email: [service.in@Bosch-Home.com](mailto:service.in@Bosch-Home.com) | Website: [www.bosch-home.com/in](http://www.bosch-home.com/in)

## WARRANTY CARD



Customer's Name		
Address		
City	Pin	State
Telephone	Mobile	
E-mail	Model/E-Nr	
Serial No.		
Date of Purchase	Date of Expiry	
Dealer's Name		
Dealer's Signature and Stamp	Customer's Signature	

**Note:** Warranty will start from the date of purchase.

## Customer Service

Regardless of the nature of your concern, you can always be sure of personal attention from the Bosch Customer Service: on the internet and on the phone.

India, Bhārat, भारत  
BSH Household Appliances Mfg. Pvt. Ltd.  
Arena House, Main Bldg, 2nd Floor, PlotNo. 103,  
Road No. 12, MIDC, Andheri East  
Mumbai 400093  
Toll Free 1800 266 1880\*  
[www.bosch-home.com/in](http://www.bosch-home.com/in)  
\*Mon-Sat 8am to 8pm (exclude public holidays)

**E-mail: [service.in@bosch-home.com](mailto:service.in@bosch-home.com)**

## 15 Technical specifications

Voltage	220– 240 V ~
Frequency	50 / 60 Hz
Connection rating	1300 W
Maximum static pump pressure	15 bar
Maximum capacity of water tank (without filter)	1,3 l
Maximum capacity of bean container	≈250 g
Length of the power cable	100 cm
Appliance height	38,3 cm
Appliance width	25,1 cm
Appliance depth	43,3 cm
Weight, empty	≈8-9 kg
Type of grinder	Ceramic/ steel

---

## Service world-wide

---

### Central Service Contacts

**AU** Australia

BSH Home Appliances Pty. Ltd.  
Gate 1, 1555 Centre Road  
Clayton, Victoria 3168  
Tel.: +61 1300 369 744\*  
mailto:customersupport.au@bshg.com  
www.bosch-home.com.au  
\*Mon-Fri 24 hours

**GB** Great Britain

BSH Home Appliances Ltd.  
Grand Union House, Old Wolverton Road,  
Wolverton  
Milton Keynes MK12 5PT  
To arrange an engineer visit, to order  
spare parts and accessories or for  
product advice please visit [www.bosch-home.co.uk](http://www.bosch-home.co.uk) Or call Tel.: +44 344 892  
8979\*  
\*Calls are charged at the basic rate,  
please check with your telephone service  
provider for exact charges.

**IE** Republic of Ireland

BSH Home Appliances Ltd.  
M50 Business Park, Ballymount Road Up-  
per, Walkinstown  
Dublin 12  
To arrange an engineer visit, to order  
spare parts and accessories or for  
product advice please call Tel.: +353  
1450 2655\*  
[www.bosch-home.ie](http://www.bosch-home.ie)  
\*Calls are charged at the basic rate,  
please check with your telephone service  
provider for exact charges

**IN** India, Bhārat, भारत

BSH Household Appliances Mfg. Pvt. Ltd.  
Arena House, Main Bldg, 2nd Floor, Plot  
No. 103, Road No. 12, MIDC, Andheri  
East  
Mumbai 400093  
Toll Free 1800 266 1880\*  
[www.bosch-home.com/in](http://www.bosch-home.com/in)  
\*Mon-Sat 8am to 8pm (exclude public hol-  
idays)

**MT** Malta, Repubblika ta' Malta

Oxford House Ltd.  
Triq L-Imdina, Zone 2, Central Business  
District  
Birkirkara CBD 2010  
Tel.: +356 25 464 000  
mailto:info@oxfordhouse.com.mt  
mailto:service@oxfordhouse.com.mt  
[www.oxfordhouse.com.mt](http://www.oxfordhouse.com.mt)

---

**NZ** New Zealand

BSH Home Appliances Ltd.  
Level 3, Air NZ Building, Smales Farm  
Business Park, 74 Taharoto Road, Taka-  
puna  
Auckland 0622  
Toll free: 0800 245 700\*  
mailto:aftersales.nz@bshg.com  
[www.bosch-home.co.nz](http://www.bosch-home.co.nz)  
\*Mon-Fri 8.30am to 5pm (exclude public  
holidays)

---

**SG** Singapore, 新加坡

BSH Home Appliances Pte. Ltd.  
38C Jalan Pemimpin, #01-01  
Singapore 577180  
Tel.: +65 6751 5000\*  
mailto:bshsgp.service@bshg.com  
[www.bosch-home.com.sg](http://www.bosch-home.com.sg)  
\*Mon-Fri 9am to 6pm, Sat: 9am to 1pm  
(exclude public holidays)

---









## Thank you for buying a Bosch Home Appliance!

Register your new device on MyBosch now and profit directly from:

- **Expert tips & tricks for your appliance**
- **Warranty extension options**
- **Discounts for accessories & spare-parts**
- **Digital manual and all appliance data at hand**
- **Easy access to Bosch Home Appliances Service**

Free and easy registration – also on mobile phones:

**[www.bosch-home.com/welcome](http://www.bosch-home.com/welcome)**



## Looking for help? You'll find it here.

Expert advice for your Bosch home appliances, help with problems or a repair from Bosch experts.

Find out everything about the many ways Bosch can support you:

**[www.bosch-home.com/service](http://www.bosch-home.com/service)**

Contact data of all countries are listed in the attached service directory.

### **BSH Hausgeräte GmbH**

Carl-Wery-Straße 34  
81739 München, GERMANY  
[www.bosch-home.in](http://www.bosch-home.in)

A Bosch Company



**8001321499** (040611)

en