



BOSCH

Register your
new device on
MyBosch now and
get free benefits:
**[bosch-home.com/
welcome](https://bosch-home.com/welcome)**



Cordless handstick vacuum cleaner

BBS71

BCS71

BKS71

BSS71

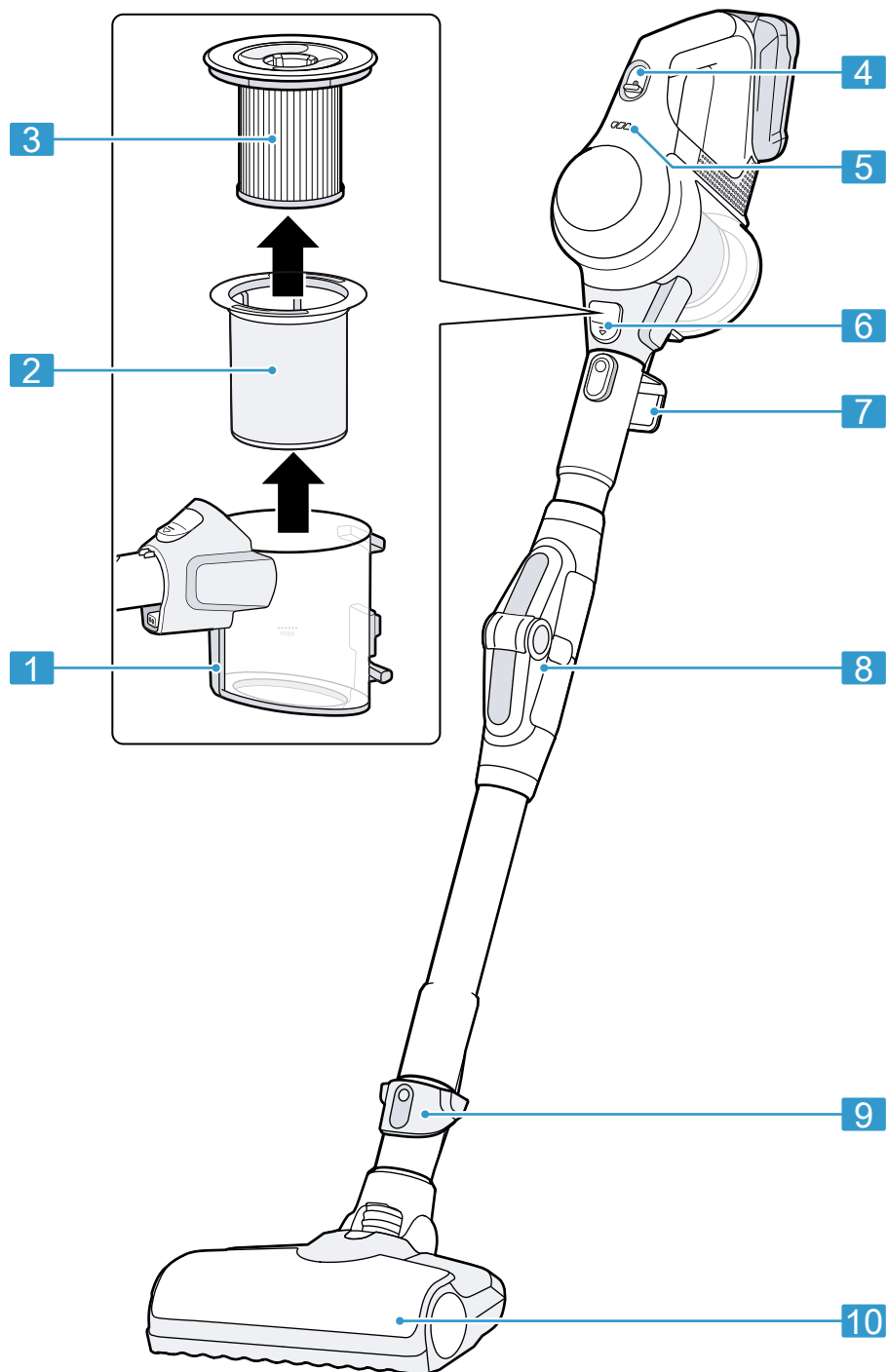
[en] Information for Use

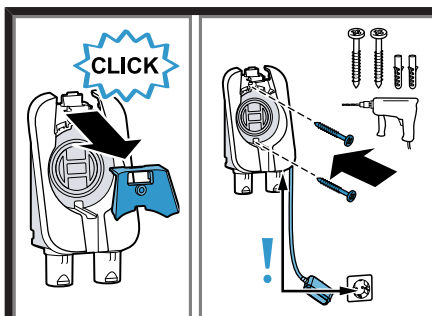


<https://digitalguide.bsh-group.com?mat-no=8001293137>

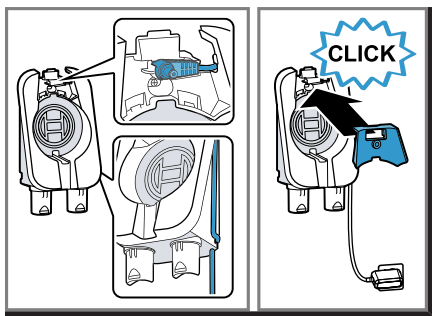


[en] Scan the QR code or visit the website to open the Further Notices for Use. You can find additional information about your appliance or accessory here.

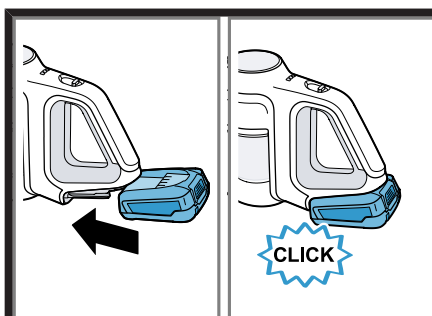




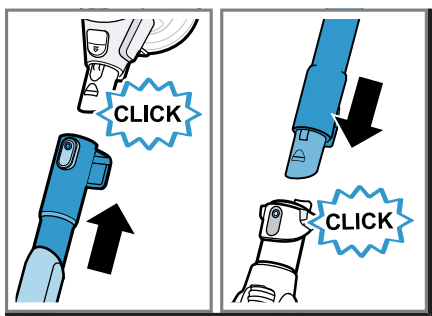
2



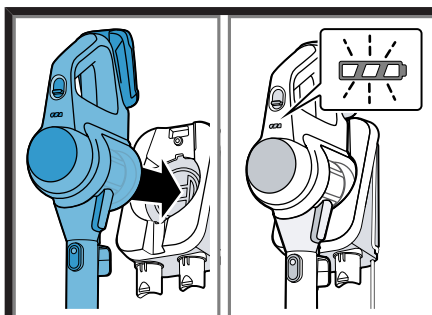
3



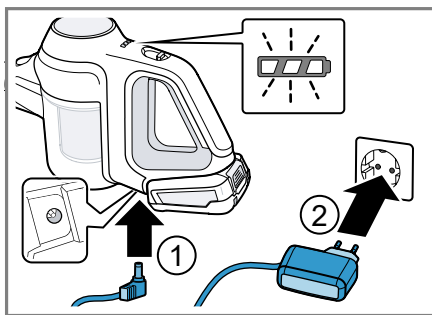
4



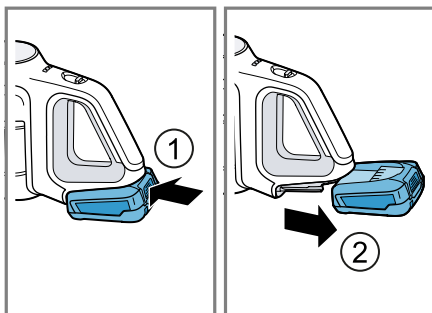
5



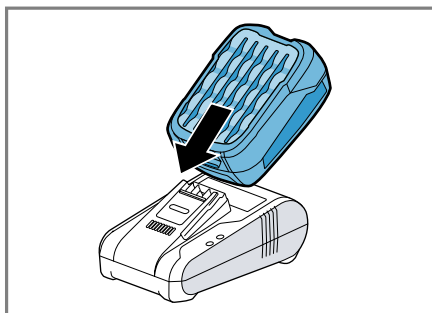
6



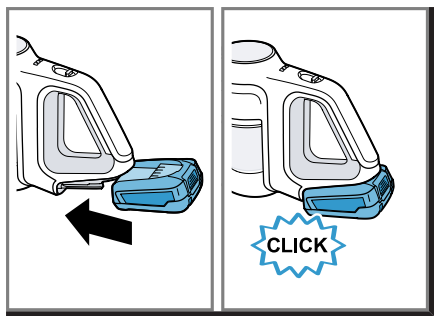
7



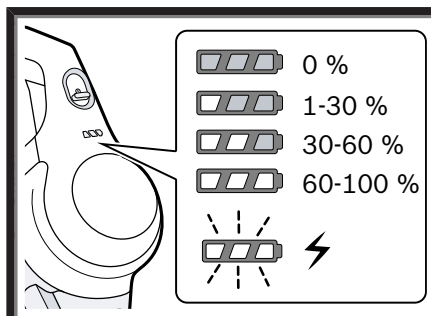
8



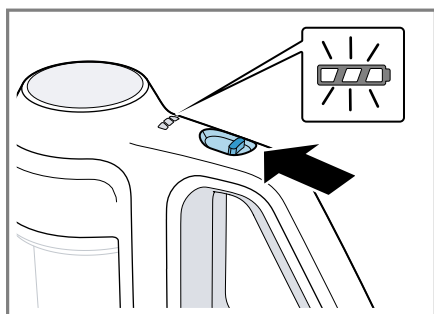
9



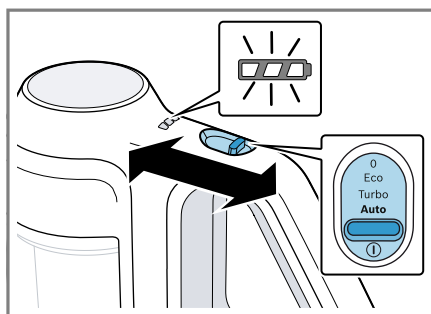
10



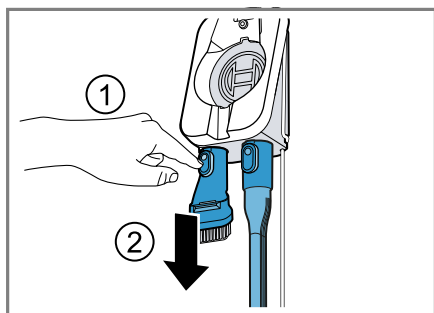
11



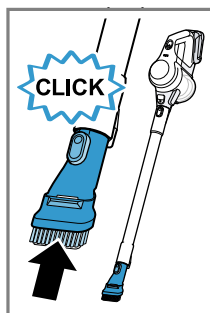
12



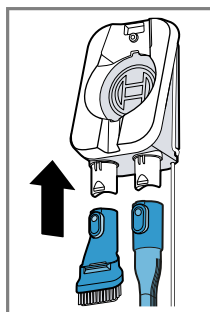
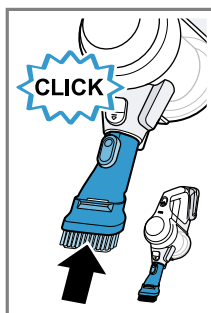
13



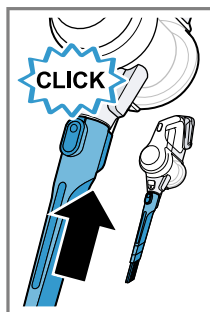
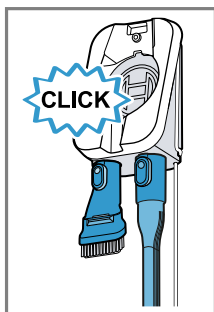
14



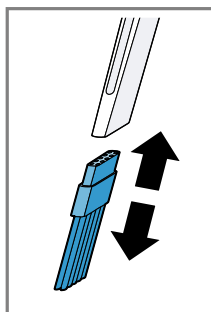
15

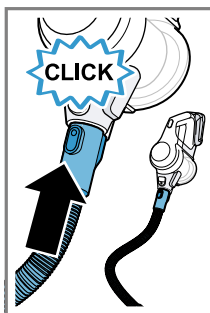


16

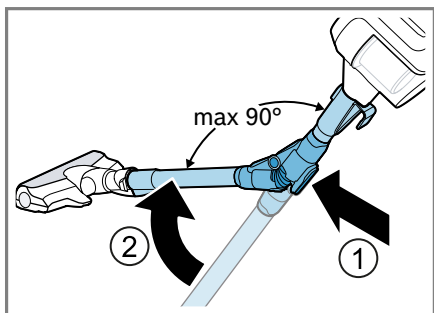
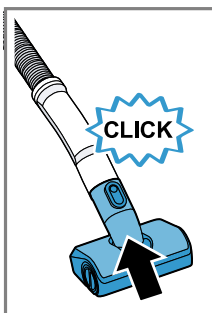


17

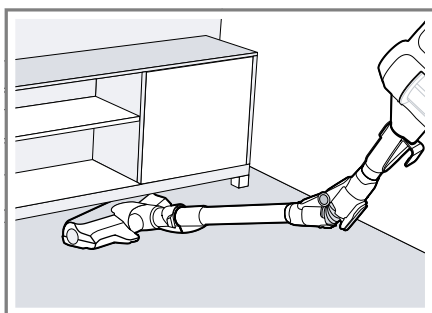




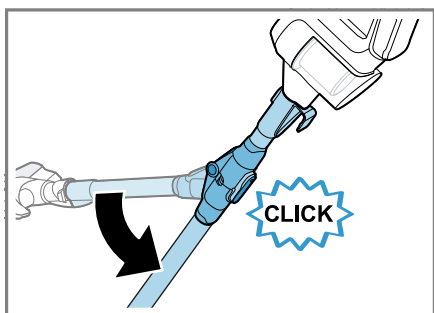
18



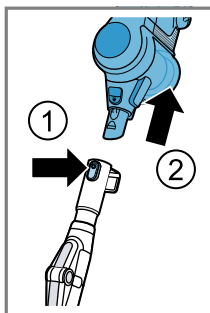
19



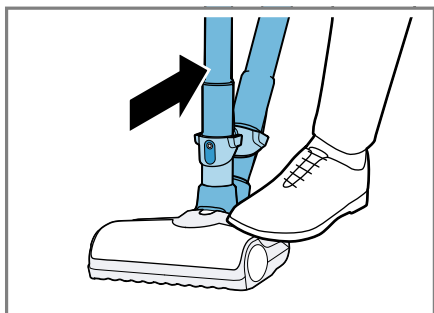
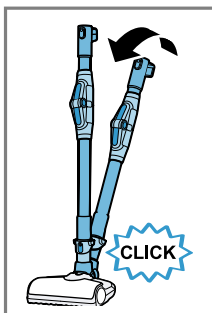
20



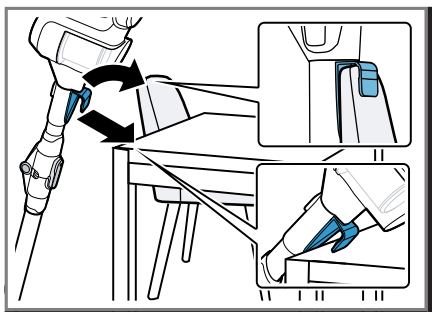
21



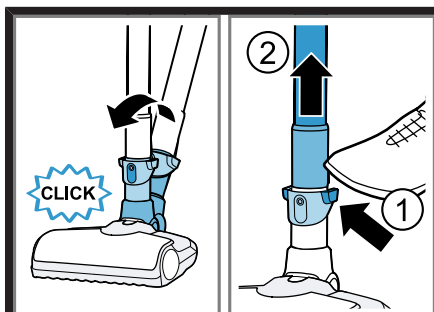
22



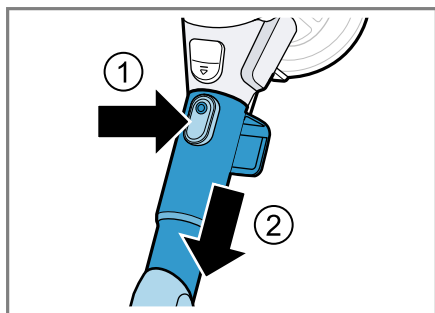
23



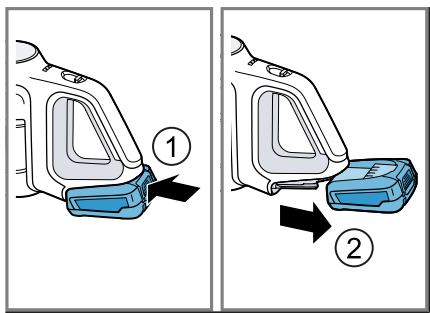
24



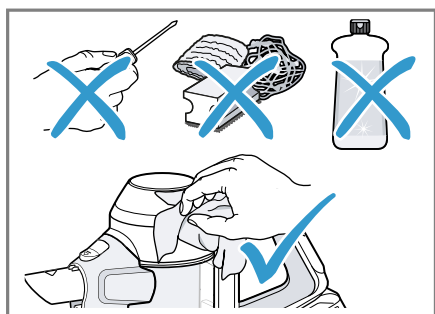
25



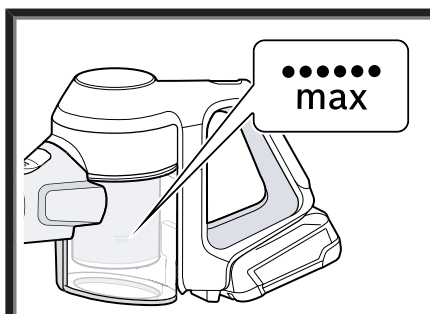
26



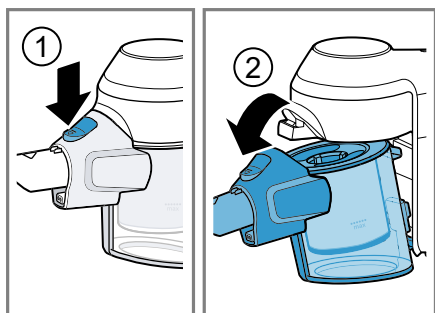
27



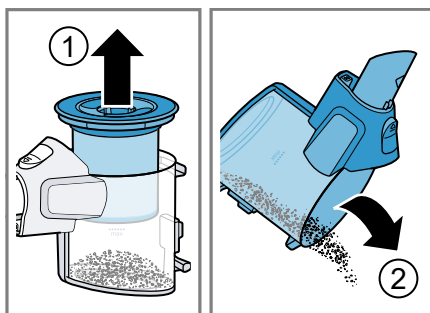
28



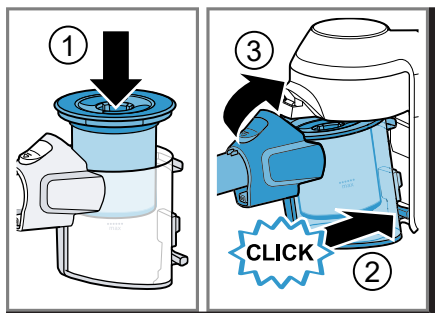
29



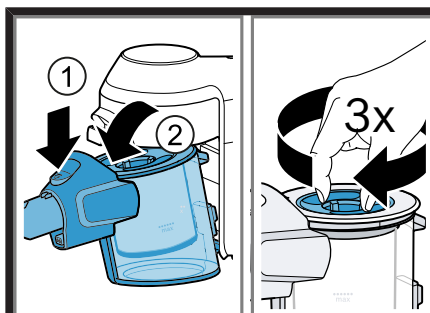
30



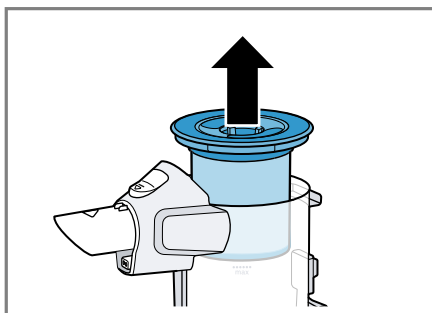
31



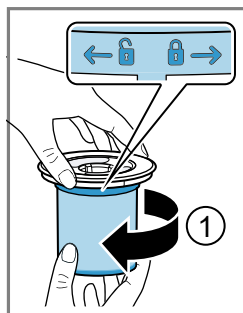
32



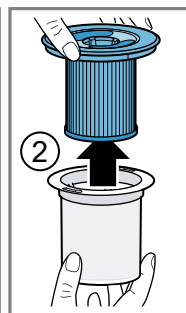
33



34



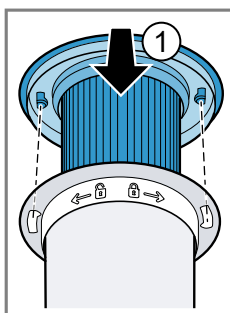
35



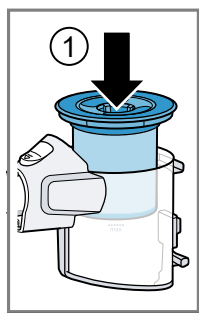
36



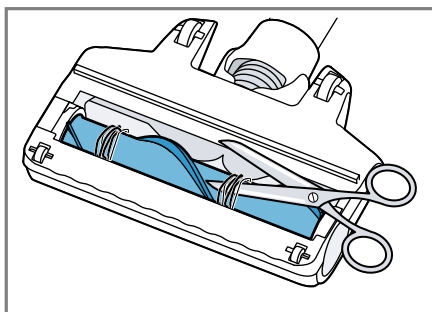
37



38



39



40

Table of contents

1 Safety	10
1.1 General information	10
1.2 Intended use	10
1.3 Restriction on user group	10
1.4 Safety instructions	10
2 Preventing material damage.....	12
3 Overview	12
4 Installing the base station	12
5 Operation.....	12
5.1 Installing the appliance.....	12
5.2 Charging the appliance.....	12
5.3 Battery runtimes	13
5.4 Operating the appliance	13
5.5 Removing the appliance.....	13
6 Cleaning and servicing	13
6.1 Cleaning the appliance	13
6.2 Emptying the dust container	13
6.3 Cleaning the filter unit	13
6.4 Cleaning the floor nozzle	13
7 Troubleshooting.....	13
8 Disposing of old appliance.....	14
9 Disposing of batteries.....	15
10 Customer Service.....	15
10.1 Warranty conditions	15



Safety

- Read this instruction manual carefully.
- Keep the instruction manual and the product information safe for future reference or for the next owner.
- Do not connect the appliance if it has been damaged in transit.

Only use this appliance:

- with genuine parts and accessories. Damage caused by using third-party products is not covered under the warranty.
- for cleaning surfaces.
- in private households and in enclosed spaces in a domestic environment at room temperature.
- up to an altitude of max. 2000 m above sea level.

Do not use the appliance:

- for vacuum-cleaning persons or animals.
- for vacuuming up harmful, sharp-edged, hot or burning substances.
- for vacuuming up damp substances or liquids.
- for vacuuming up highly flammable or explosive materials and gases.
- for vacuuming up ash or soot from stoves and central heating systems.
- for vacuuming up toner dust from printers and photocopiers.
- for vacuuming up building rubble.

Disconnect the appliance from the power supply when:

- cleaning the appliance.

This appliance may be used by children aged 8 or over and by people who have reduced physical, sensory or mental abilities or inadequate experience and/or knowledge, provided that they are supervised or have been instructed on how to use the appliance safely and have understood the resulting dangers.

Do not let children play with the appliance.

Cleaning and user maintenance must not be performed by children unless they are being supervised.

- ▶ Repairs to the appliance should only be carried out by trained specialist staff.
- ▶ Only use genuine spare parts when repairing the appliance.
- ▶ Never operate a damaged appliance.

- ▶ Never operate an appliance with a cracked or fractured surface.
- ▶ Call customer services. → *Page 15*
- ▶ Only use the appliance in enclosed spaces.
- ▶ Never expose the appliance to intense heat or humidity.
- ▶ Do not use steam- or high-pressure cleaners to clean the appliance.
- ▶ Never let the power cord come into contact with hot appliance parts or heat sources.
- ▶ Never let the power cord come into contact with sharp points or edges.
- ▶ Never kink, crush or modify the power cord.
- ▶ Connect and operate the charging cable¹ and the quick charger¹ only in accordance with the specifications on the rating plate.
- ▶ Connect the charging cable¹ and the quick charger¹ to a power supply with alternating current only via a properly installed socket with earthing.
- ▶ When cleaning the appliance, do not use flammable substances or substances that contain alcohol.
- ▶ Keep clothing, hair, fingers and other body parts away from the openings on the appliance and the moving parts.
- ▶ Never point the pipe or the nozzles towards eyes, hair, ears or mouths.
- ▶ Ensure that children do not play with the appliance, even when it is in the base station¹.
- ▶ Persons with electronic implants must stand at least 10 cm away from the appliance.
- ▶ Keep packaging material away from children.
- ▶ Do not let children play with packaging material.
- ▶ Protect the battery against fire, heat and constant sunlight.
- ▶ Protect the battery against water and penetrating moisture.
- ▶ Never open the battery.
- ▶ When not in use, keep the battery away from metal objects, e.g. paper clips, coins, keys, nails or screws.
- ▶ Supply fresh air.
- ▶ If there are any problems, seek medical advice from a doctor.

¹ Depending on the appliance specifications

en Preventing material damage

- ▶ If these come into contact with the skin, wash immediately with cold water.
- ▶ If these come into contact with the eyes, seek medical help.

Preventing material damage

- ▶ Check and clean any wet objects.
- ▶ Replace damaged objects.
- ▶ Regularly check the running surfaces of the nozzles for wear.
- ▶ Replace worn nozzles.
- ▶ Never use the nozzle without the brush roller in place.
- ▶ Never operate the appliance without the filter unit.

Overview

You can find an overview of the parts of your appliance here.

→ Fig. **1**

1	Dust container
2	Fluff filter
3	Cartridge filter
4	Power control and on/off switch
5	Status display
6	Dust container release button
7	Storage hook
8	Flexible suction pipe
9	Foot release
10	Universal floor nozzle with free-standing function

Installing the base station

- ▶ Check whether any household wiring could be damaged in the installation area.
- ▶ Do not install the base station horizontally or vertically above, below or next to a socket.

→ Fig. **2 - 3**

Operation

Installing the appliance

→ Fig. **4 - 5**

Charging the appliance

- ▶ Only charge the battery in chargers that are recommended by the manufacturer.
- ▶ Only use the battery in connection with the Bosch appliance.
- ▶ Charge the battery using the original charging cable ¹ or the original quick charger ¹.
- ▶ Only use batteries from the Power for ALL 18 V series.
- ▶ Ensure that children do not play with the appliance, even when it is in the base station¹.

→ Fig. **6 - 10**

¹ Depending on the appliance specifications

Battery runtimes

You can find an overview of the battery runtimes, depending on the battery that is used, here.

Notes

- The appliance features intelligent battery detection. With 2.50 Ah and 3.0 Ah batteries from the Power for ALL 18 V series, the appliance is designed for everyday cleaning tasks. The 4.0 Ah Power + battery from the Power for ALL 18 V series optimises the appliance for the runtime. With the 5.0 Ah battery in the Power for ALL 18 V series, the appliance is designed for particularly difficult cleaning tasks.
- The following modes affect the battery runtime:
 - Mode 1: **Eco** mode with non-electrical accessory
 - Mode 2: **Eco** mode with electrical floor nozzle
 - Mode 3: **Auto** mode with electrical floor nozzle
 - Mode 4: **Turbo** mode with electrical floor nozzle

Runtime	2,5 Ah	3,0 Ah	4,0 Ah Power+	5,0 Ah
Mode 1 up to min.	35	40	45	35
Mode 2 up to min.	25	30	35	30
Mode 3 up to min.	12	15	20	25
Mode 4 up to min.	8	10	10	12

Notes

- Like every Li-ion battery, the batteries from the Power for ALL 18 V series wear out over time, meaning that the battery capacity and the runtime decrease. This is a natural aging process and not the result of a material error, manufacturing error or material defect.
- You can delay the natural wear by using the following measures:
 - Only charge the battery in the temperature range between 0 °C and 45 °C.
 - Only store the battery in the temperature range between -20 °C and 50 °C.
 - Do not store the battery for an extended period of time if it is fully charged or fully discharged.

Operating the appliance

→ Fig. **11** - **24**

Removing the appliance

→ Fig. **25** - **27**

Cleaning and servicing

To keep your appliance working efficiently for a long time, it is important to clean and maintain it carefully.

Cleaning the appliance

→ Fig. **28** - **28**

Emptying the dust container

→ Fig. **29** - **32**

Cleaning the filter unit

- ▶ Never allow the filters to come into contact with liquids.

→ Fig. **33** - **39**

Cleaning the floor nozzle

→ Fig. **40** - **40**

Troubleshooting

- ▶ Repairs to the appliance should only be carried out by trained specialist staff.
- ▶ Only use genuine spare parts when repairing the appliance.

en Disposing of old appliance

The appliance is not working.

The battery status display does not show any status.

The battery has not been inserted correctly.

The battery has not been charged.

The red fault indicator lights up for 10 seconds.

The battery has overheated or overcooled.

The appliance has overheated or overcooled.

No charging function.

Incorrect charger was used.

- Only use the charger that is included.

The dust container cannot be inserted.

The filter unit is not complete.

- Check whether the filter unit is complete.

The filter unit or dust container is not positioned correctly.

- Check whether the filter unit and dust container are inserted correctly.

Suction is reduced.

The filter is blocked.

1. Switch off the appliance and disconnect the appliance from the power supply.
2. Clean the filter unit.

The nozzle is blocked.

1. Switch off the appliance and disconnect the appliance from the power supply.
2. Check whether the air channel from the nozzle to the appliance is blocked.
3. Empty the dust container.
4. Clean the filter unit.
5. Once the appliance has cooled down, switch the appliance back on.

Disposing of old appliance

- Dispose of the appliance in an environmentally friendly manner.

Information about current disposal methods are available from your specialist dealer or local authority.



Dispose of packaging in an environmentally-responsible manner. This appliance is certified in accordance with the guidelines on E-waste (Management) Rules 2022 which govern waste electrical and electronic equipment.

The guideline provide a framework for the return and recycling of used appliances.

Note: This product doesn't contain any of hazardous substances as specified in the e-waste Management and Handling Rules 2022.

Dos

- Please visit our website <https://www.bosch-home.in/metapages/e-waste-management> to find out more details regarding e-waste disposal.
- Keep the product in isolated area, after it becomes non-functional/un-repairable so as to prevent its accidental breakage.
- Consult the authorized service center as to whether the Electronic Equipment can be repaired or not, before discarding.
- Consult the retailer about appliance take back schemes.

Don'ts

- The product should not be opened by the user himself/herself, but only by authorized service personnel.

- The product is not meant for re-sale to any unauthorized agencies/scrap dealers/kabariwalah.
- Don't dispose of the discarded Electronic Equipment in household bins or Municipal bins.
- Don't dump the discarded Electronic Equipment in the open or in any land fill site, as this will result in contamination of the soil and the ground water.
- Do not keep any replaced spare part(s) from the product in exposed area.

packs/batteries, must be collected separately and disposed of in an environmentally correct manner.

Disposing of batteries

Batteries should be recycled in an environmentally friendly manner. Do not dispose of the batteries in the household rubbish.

- Dispose of batteries in an environmentally friendly manner.



According to the European Guideline 2006/66/EC, defective or used battery

Customer Service

Detailed information on the warranty period and terms of warranty in your country is available from our after-sales service, your retailer or on our website.

The contact details for Customer Service can be found in the Customer Service directory at the end of the manual or on our website.

Helpline no.: 1800-266-1880 (Monday to Saturday – 8 am to 8 pm)

Email ID: service.in@bosch-home.com

Chat with us (WhatsApp):

+91-8451000555



Warranty conditions

WARRANTY

1. This product is warranted by the company (warranty) to be free from defects in materials and workmanship for a period of 2 years from the date of purchase (warranty period)
2. This product is covered under warranty against any manufacturing defect or workmanship for a period of **TWO YEARS** from the date of purchase. Should a defect develop during the warranty period, Bosch undertakes to repair the appliance **FREE OF CHARGE** through any of the authorised service centres.
3. **Warranty and service:**
For any information, grievances or queries please contact our customer care helpline: 1-800-266-1880, or write to us at service.in@bosch-home.com. The company will register your service request and retain a computer record of your service request. To make a warranty claim, you must provide proof of purchase.
4. **CLAIM:**
 - a. The claim must be made within the warranty period.
 - b. Bosch will repair or replace any defective parts and correct any problems resulting from poor workmanship free of charge.
 - c. Service to the product shall be carried out at your home or the store, whereby the customer has to take the product to the store where the product was purchased at the purchaser's risk, responsibility and cost.
 - d. While the company will make every effort to carry out the necessary repairs at the earliest opportunity, the company is under no obligation to do so within a stipulated time period. Claims, if any, to this warranty shall in no case exceed the purchase price of the product.
 - e. In case of repairs or replacement of any part(s) of the product, this warranty will thereafter continue and remain in force only for the unexpired period of the warranty.
 - f. Replacement of parts would be purely at the discretion of the company alone. If the entire product is being replaced (subject to the sole discretion of the company), the same model will be replaced, and in the event such model has been discontinued, it shall be replaced with the model of equivalent price at the time of purchase.
 - g. Replacement criteria from warranty terms do not stand if "no problem found" type diagnosis is made and perceived intermittent errors that cannot be reproduced are noticed.
 - h. The authorised technician concerned will advise whether to effect repair on site or at the authorised service centre.
 - i. This warranty will be terminated automatically after a period of 24 months from the date of purchase even if the product was not in use for any time during the warranty period for any reason.
5. This warranty shall be rendered null and void if:
 - a. The product is physically damaged
 - b. The product is modified, maintained or repaired by a party not authorised by Bosch.
 - c. The product is installed, maintained and operated in ways other than as recommended by Bosch.
 - d. The product is used for commercial purposes.
 - e. The product is faulty or damaged due to electrical faults external to the product.
 - f. Malfunctions or damage resulting from insects, natural calamities, fire and/or accidents.
 - g. The model number, serial number or warranty stickers have been removed or tampered with.
 - h. In case any spare part or any other part is used in the functioning of the appliance which does not comply with the safety parameters approved by Bosch.
6. **Warranty limitations**
 - a. The warranty is not transferable from one user/customer to another.
 - b. The Bosch warranty does not entail a warranty of functionality or any obligation to repair or replace a defective product if that defect is a result of physical breakage, improper installation or connections, electrical faults external to the product, misuse or unauthorised modification of the product.

IMPORTANT NOTE:

This product is designed for sale and use in India only. The applicability of conditions as provided for claiming Warranty, are valid for use in India not outside of India.

WARRANTY CARD

Customer's Name		
Address		
City	Pin	State
Telephone	Mobile	
E-mail	Model/E-Nr	
Serial No.		
Date of Purchase	Date of Expiry	
Dealer's Name		
Dealer's Signature and Stamp	Customer's Signature	

Note: Warranty will start from the date of purchase.

Customer Service

Regardless of the nature of your concern, you can always be sure of personal attention from the Bosch Customer Service: on the internet and on the phone.

www.bosch-home.com/in

1-800-266-1880 (toll-free)

E-mail: service.in@bosch-home.com

Service world-wide
Central Service Contacts

IN India, Bhārat, भारत
BSH Household Appliances Mfg. Pvt. Ltd.
Arena House, Main Bldg, 2nd Floor, Plot
No. 103, Road No. 12, MIDC, Andheri East
Mumbai 400093
Toll Free 1800 266 1880*
www.bosch-home.com/in
*Mon-Sat 8am to 8pm (exclude public holi-
days)



A series of horizontal lines for writing, starting with a solid line and followed by alternating solid and dashed lines.



Thank you for buying a Bosch Home Appliance!

Register your new device on MyBosch now and profit directly from:

- **Expert tips & tricks for your appliance**
- **Warranty extension options**
- **Discounts for accessories & spare-parts**
- **Digital manual and all appliance data at hand**
- **Easy access to Bosch Home Appliances Service**

Free and easy registration – also on mobile phones:

www.bosch-home.com/welcome



Looking for help? You'll find it here.

Expert advice for your Bosch home appliances, help with problems or a repair from Bosch experts.

Find out everything about the many ways Bosch can support you:

www.bosch-home.com/service

Contact data of all countries are listed in the attached service directory.

BSH Hausgeräte GmbH

Carl-Wery-Straße 34

81739 München, GERMANY

www.bosch-home.in

A Bosch Company



8001293136 (031030)

en