



**BOSCH**

**Register** your  
new device on  
MyBosch now and  
get free benefits:  
**[bosch-home.com/  
welcome](https://bosch-home.com/welcome)**



# Fridge-freezer

**CST18...**

**CST20...**

**CST22...**

**[en]** Information for Use

**Further information and explanations are available online:**



## Table of contents

<b>1 Safety .....</b>	<b>4</b>	<b>7 Basic operation .....</b>	<b>15</b>
1.1 General information.....	4	7.1 Switching on the appliance.....	15
1.2 Intended use.....	4	7.2 Operating tips.....	15
1.3 Restriction on user group.....	4	7.3 Switching off the appliance.....	15
1.4 Safe transport.....	4	7.4 Setting the temperature.....	15
1.5 Safe installation .....	5	<b>8 Refrigerator compartment .....</b>	<b>16</b>
1.6 Safe use .....	6	8.1 Tips for storing food in the refrigerator compartment .....	16
1.7 Damaged appliance.....	8	8.2 Chill zones in the refrigerator compartment .....	16
<b>2 Preventing material damage ....</b>	<b>10</b>	8.3 Cooling capacity.....	17
<b>3 Environmental protection and saving energy.....</b>	<b>10</b>	<b>9 One-star freezer compartment .....</b>	<b>17</b>
3.1 Disposing of packaging .....	10	9.1 Freezer compartment door .....	17
3.2 Saving energy.....	10	9.2 Tips for storing food in the freezer compartment.....	17
<b>4 Installation and connection.....</b>	<b>11</b>	9.3 Tips for freezing fresh food .....	17
4.1 Scope of delivery.....	11	<b>10 Defrosting .....</b>	<b>17</b>
4.2 Criteria for the installation location.....	11	10.1 Defrosting in the refrigerator compartment.....	17
4.3 Installing the appliance .....	11	10.2 Defrosting in the one-star freezer compartment.....	17
4.4 Preparing the appliance for the first time.....	11	<b>11 Cleaning and servicing.....</b>	<b>18</b>
4.5 Connecting the appliance to the electricity supply.....	12	11.1 Preparing the appliance for cleaning .....	18
<b>5 Familiarising yourself with your appliance.....</b>	<b>13</b>	11.2 Cleaning the appliance .....	19
5.1 Appliance .....	13	11.3 Cleaning the drainage hole... ..	19
<b>6 Features .....</b>	<b>14</b>	11.4 Removing the fittings.....	19
6.1 Shelf.....	14	<b>12 Troubleshooting.....</b>	<b>21</b>
6.2 Bottle rack .....	14	12.1 Power failure.....	23
6.3 Fruit and vegetable container.....	14		
6.4 Door tray.....	14		
6.5 Accessories.....	14		

<b>13 Storage and disposal .....</b>	<b>23</b>
13.1 Taking the appliance out of operation .....	23
13.2 Disposing of old appliance ...	23
<b>14 Customer Service.....</b>	<b>24</b>
14.1 Product number (E-Nr.) and production number (FD).....	25
<b>15 Technical data .....</b>	<b>25</b>



## 1 Safety

Observe the following safety instructions.

### 1.1 General information

- Read this instruction manual carefully.
- Keep the instruction manual and the product information safe for future reference or for the next owner.
- Do not connect the appliance if it has been damaged in transit.

### 1.2 Intended use

Only use this appliance:

- for chilling and freezing food and for making ice cubes.
- in private households and in enclosed spaces in a domestic environment.
- Up to an altitude of 2000 m above sea level.

### 1.3 Restriction on user group

This appliance may be used by children aged 8 or over and by people who have reduced physical, sensory or mental abilities or inadequate experience and/or knowledge, provided that they are supervised or have been instructed on how to use the appliance safely and have understood the resulting dangers.

Do not let children play with the appliance.

Cleaning and user maintenance must not be performed by children unless they are being supervised.

### 1.4 Safe transport

#### **WARNING – Risk of injury!**

The heavy weight of the appliance may result in injury when lifted.

- Do not lift the appliance on your own.

## 1.5 Safe installation

### **WARNING – Risk of electric shock!**

Incorrect installation is dangerous.

- ▶ Connect and operate the appliance only in accordance with the specifications on the rating plate.
- ▶ Connect the appliance to a power supply with alternating current only via a properly installed socket with earthing.
- ▶ The protective conductor system of the domestic electrical installation must be properly installed.
- ▶ Never equip the appliance with an external switching device, e.g. a timer or remote control.
- ▶ When the appliance is installed, the mains plug of the power cord must be freely accessible. If free access is not possible, an isolating switch must be integrated into the permanent electrical installation according to the installation regulations.
- ▶ When installing the appliance, check that the power cable is not trapped or damaged.

If the insulation of the power cord is damaged, this is dangerous.

- ▶ Never let the power cord come into contact with heat sources.

### **WARNING – Risk of explosion!**

If the appliance's ventilation openings are closed off, a leak in the refrigeration circuit may result in a flammable mixture of gas and air.

- ▶ Keep ventilation openings in the appliance casing or in the integrated casing clear of obstruction.

### **WARNING – Risk of fire!**

It is dangerous to use an extended power cord and non-approved adapters.

- ▶ Do not use extension cables or multiple socket strips.
- ▶ Only use adapters and power cords approved by the manufacturer.
- ▶ If the power cord is too short and a longer one is not available, please contact an electrician to have the domestic installation adapted.

Portable multiple socket strips or portable power supply units may overheat and cause a fire.

- ▶ Do not place portable multiple socket strips or power supply units on the back of the appliance.

## 1.6 Safe use

### **WARNING – Risk of electric shock!**

An ingress of moisture can cause an electric shock.

- ▶ Only use the appliance in enclosed spaces.
- ▶ Never expose the appliance to intense heat or humidity.
- ▶ Do not use steam- or high-pressure cleaners to clean the appliance.

### **WARNING – Risk of suffocation!**

Children may put packaging material over their heads or wrap themselves up in it and suffocate.

- ▶ Keep packaging material away from children.
- ▶ Do not let children play with packaging material.

Children may breathe in or swallow small parts, causing them to suffocate.

- ▶ Keep small parts away from children.
- ▶ Do not let children play with small parts.

### **WARNING – Risk of explosion!**

If the cooling circuit is damaged, flammable refrigerant may escape and explode.

- ▶ To accelerate the defrosting process, do not use any other mechanical devices or means other than those recommended by the manufacturer.
- ▶ If food is stuck to the freezer compartment, loosen it with a blunt object such as the handle of a wooden spoon.

Products which contain flammable propellants and explosive substances may explode, e.g. spray cans.

- ▶ Do not store products which contain flammable propellants (e.g. spray cans) or explosive substances in the appliance.

**⚠ WARNING – Risk of fire!**

Electrical devices within the appliance may cause a fire, e.g. heaters or electric ice makers.

- ▶ Do not operate electrical devices within the appliance.

**⚠ WARNING – Risk of injury!**

Containers that contain carbonated drinks may burst.

- ▶ Do not store containers that contain carbonated drinks in the one-star freezer compartment.

Injury to the eyes caused by escaping flammable refrigerant and hazardous gases.

- ▶ Do not damage the tubes of the refrigerant circuit or the insulation.

The appliance may tip.

- ▶ Do not stand or support yourself on the base, runners or doors.

**⚠ WARNING – Risk of burns!**

Individual parts on the back of the appliance become hot during operation.

- ▶ Never touch these hot parts.

**⚠ WARNING – Risk of cold burns!**

Contact with frozen food and cold surfaces may cause burns by refrigeration.

- ▶ Never put frozen food straight from the freezer compartment into your mouth.
- ▶ Avoid prolonged contact of the skin with frozen food, ice and surfaces in the freezer compartment.

**⚠ CAUTION – Risk of harm to health!**

To prevent food from being contaminated, you must observe the following instructions.

- ▶ If the door is open for an extended period of time, this may lead to a considerable temperature increase in the compartments of the appliance.
- ▶ Regularly clean the surfaces that may come into contact with food and accessible drain systems.

- ▶ Store raw meat and fish in suitable containers in the refrigerator so that they do not touch or drip on other food.
- ▶ If the fridge/freezer is empty for an extended period of time, switch off the appliance, defrost it, clean it and leave the door open to prevent the formation of mould.

Metal or metal-style parts in the appliance may contain aluminium. If acidic food comes into contact with aluminium in the appliance, aluminium foil ions may pass into the food.

- ▶ Do not consume soiled food.

## 1.7 Damaged appliance

### **WARNING – Risk of electric shock!**

If the appliance or the power cord is damaged, this is dangerous.

- ▶ Never operate a damaged appliance.
- ▶ Never pull on the power cord to unplug the appliance. Always unplug the appliance at the mains.
- ▶ If the appliance or the power cord is damaged, immediately unplug the power cord or switch off the fuse in the fuse box.
- ▶ Call customer services. → *Page 24*

Improper repairs are dangerous.

- ▶ Repairs to the appliance should only be carried out by trained specialist staff.
- ▶ Only use genuine spare parts when repairing the appliance.
- ▶ If the power cord of this appliance is damaged, it must be replaced by the manufacturer, the manufacturer's Customer Service or a similarly qualified person in order to prevent any risk.

### **WARNING – Risk of fire!**



If the tubes are damaged, flammable refrigerant and harmful gases may escape and ignite.

- ▶ Keep naked flames and ignition sources away from the appliance.
- ▶ Ventilate the room.
- ▶ Switch off the appliance. → *Page 15*



- ▶ Unplug the mains plug from the mains or switch off the circuit breaker in the fuse box.
- ▶ Call customer service. → *Page 24*

---

## 2 Preventing material damage

### ATTENTION!

If not rolling freely, the appliance's castors may damage the floor when the appliance is moved.

- ▶ Transport the appliance using a sack truck.
- ▶ Use floor protection when moving the appliance, and do not move it in a zigzag fashion.

Using the appliance, base, runners or doors as a seat or climbing surface may damage the appliance.

- ▶ Do not stand or lean on the appliance, base, runners or doors.

Contamination with oil or fat may cause plastic parts and door seals to become porous.

- ▶ Keep plastic parts and door seals free of oil and grease.

Metal or metal-style parts in the appliance may contain aluminium. When aluminium comes into contact with acidic foods, it corrodes and discolours.

- ▶ Only store packaged food in the appliance.

If you clean fittings and accessories in the dishwasher, this may cause them to become deformed or discoloured.

- ▶ Never clean fittings and accessory in the dishwasher.

---

## 3 Environmental protection and saving energy

### 3.1 Disposing of packaging

The packaging materials are environmentally compatible and can be recycled.

- ▶ Sort the individual components by type and dispose of them separately.

### 3.2 Saving energy

If you follow these instructions, your appliance will use less power.

#### Selecting the installation location

- Keep the appliance out of direct sunlight.
- Install the appliance as far away as possible from heating elements, cookers and other heat sources:
  - Maintain a 30 mm clearance to electric or gas cookers.
  - Maintain a 300 mm clearance to oil or solid-fuel cookers.
- Never cover or block the external ventilation openings.

#### Saving energy during use

**Note:** The arrangement of the fittings does not affect the energy consumption of the appliance.

- Open the appliance only briefly and then close it carefully.
- Never cover or block the interior ventilation openings or the exterior ventilation openings.
- Transport purchased food in a cool bag and place in the appliance quickly.
- Allow warm food and drinks to cool down before storing them.

- Thaw frozen food in the refrigerator compartment to utilise the low temperature of the food.
- Always leave some space between the food and to the back panel.
- Defrost the freezer compartment regularly.
- Open the freezer compartment door only briefly and then close it properly.

## 4 Installation and connection

### 4.1 Scope of delivery

After unpacking all parts, check for any transport damage and for completeness of delivery.

If you have any complaints, contact your dealer or our after-sales service → *Page 24*.

The delivery consists of the following:

- Free-standing appliance
- Equipment and accessories<sup>1</sup>
- Installation instructions
- User manual
- Customer service directory
- Warranty enclosure<sup>2</sup>
- Energy label

### 4.2 Criteria for the installation location



#### **WARNING**

#### **Risk of explosion!**

If the appliance is in a space that is too small, a leak in the refrigeration circuit may result in a flammable mixture of gas and air.

- Only install the appliance in a space with a volume of at least 1 m<sup>3</sup> per 8 g refrigerant. The volume of refrigerant is indicated on the rating plate. → *"Appliance", Fig. 1/3, Page 13*

The weight of the appliance ex works may be up to 60 kg depending on the model.

The subfloor must be sufficiently stable to bear the weight of the appliance.

The surface must be level.

This refrigerator is intended for use at ambient temperatures of 16 °C to 43 °C.

The appliance is fully functional within the permitted room temperature.

### 4.3 Installing the appliance

- Install the appliance in accordance with the enclosed installation instructions.

### 4.4 Preparing the appliance for the first time

1. Remove the informative material.
2. Remove the protective foil and transit bolts, e.g. remove the adhesive strips and carton.
3. Clean the appliance for the first time. → *Page 19*

<sup>1</sup> Depending on the appliance specifications

<sup>2</sup> Not in all countries

## 4.5 Connecting the appliance to the electricity supply

1. Insert the mains plug of the appliance's power cable in a socket nearby.

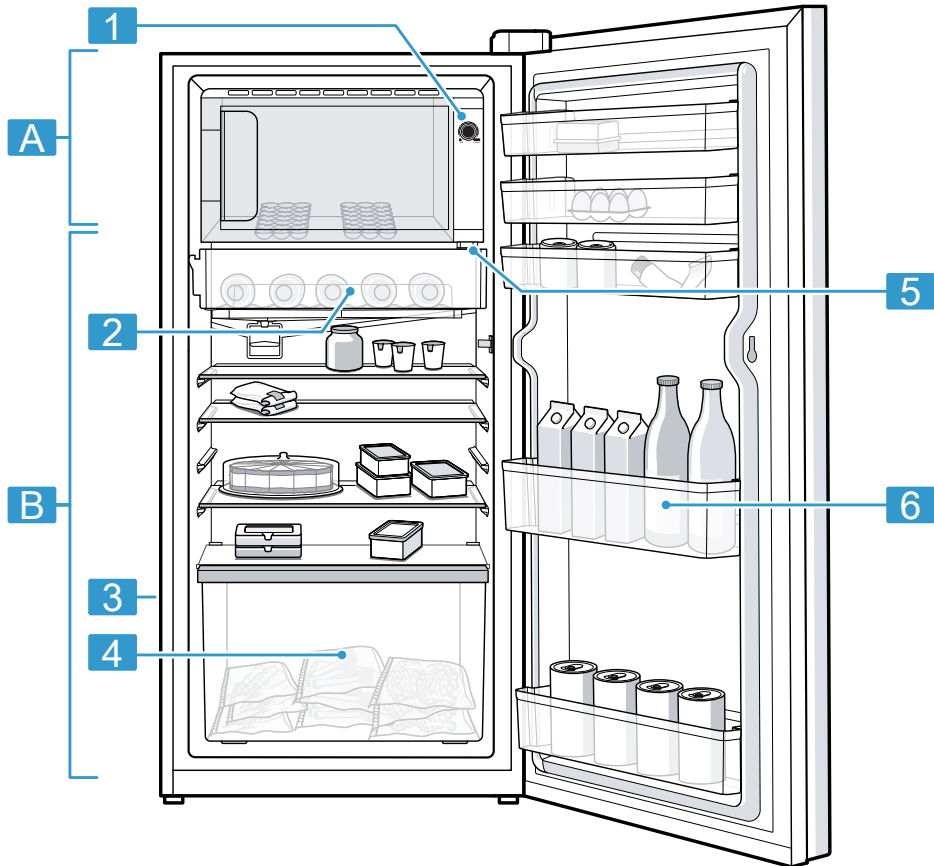
The connection data of the appliance can be found on the rating plate. → "Appliance", Fig. **1**/**3**, Page 13

2. Check the mains plug is inserted properly.
- ✓ The appliance is now ready for use.

## 5 Familiarising yourself with your appliance

### 5.1 Appliance

You can find an overview of the parts of your appliance here.



**1**

**A** One-star freezer compartment  
→ Page 17

**B** Refrigerator compartment  
→ Page 16

**1** Temperature controller (refrigerator compartment)

**2** Bottle rack → Page 14

**3** Rating plate → Page 25

<b>4</b>	Fruit and vegetable container → Page 14
<b>5</b>	Lighting
<b>6</b>	Door tray for large bottles → Page 14

**Note:** Deviations between your appliance and the diagrams may differ with regard to their features and size.

## 6 Features

The features of your appliance depend on the model.

### 6.1 Shelf

To vary the shelf as required, you can remove the shelf and re-insert it elsewhere.

→ "Removing the shelf", Page 19

### 6.2 Bottle rack

Safely store bottles in the bottle rack.

#### **WARNING** **Risk of injury!**

Bottles can be placed in the bottle rack.

- ▶ Do not store PET bottles in the bottle rack for longer than 2 hours.
- ▶ Do not store glass bottles in the bottle rack.

Depending on how frequently the appliances are opened, condensation may form on the bottom of the bottle rack. Remove the condensation with a dry cloth.

**Note:** To prevent water from dripping onto the shelves, do not permanently remove the bottle rack.

### 6.3 Fruit and vegetable container

Store fresh fruit and vegetables in their packaging in the fruit and vegetable container.

Cover any chopped fruit and vegetables, or store in air-tight packaging. Condensation may form in the fruit and vegetable container depending on the food and quantity stored.

Remove the condensation with a dry cloth.

To ensure that the quality and aroma are retained, store fruit and vegetables that are sensitive to cold outside of the appliance at temperatures of approx. 8 °C to 12 °C, e.g. pineapple, bananas, citrus fruits, cucumbers, courgettes, peppers, tomatoes and potatoes.

### 6.4 Door tray

To adjust the door tray as required, you can remove the door tray and re-insert elsewhere.

→ "Removing door tray", Page 20

### 6.5 Accessories

Use original accessories. These have been made especially for your appliance.

The accessories for your appliance depend on the model.

#### **Egg tray**

Store eggs safely on the egg tray.

#### **Ice cube tray**

Use the ice cube tray to make ice cubes.

#### **Making ice cubes**

Use only drinking water to make ice cubes.

1. Fill the ice cube tray with drinking water up to  $\frac{3}{4}$  and place in the freezer compartment.  
If the ice cube tray is stuck to the freezer compartment, loosen it with a blunt object such as the handle of a wooden spoon.
2. To loosen the ice cubes, twist the ice cube tray slightly or hold it briefly under flowing water.

## 7 Basic operation

### 7.1 Switching on the appliance

1. Electrically connect the appliance.  
→ Page 12
- ✓ The appliance begins to cool.
2. Set the required temperature.  
→ Page 15

### 7.2 Operating tips

- Once you have switched on the appliance, the set temperature is only reached after several hours. Do not put any food in the appliance until the set temperature has been reached.
- The front and side panels of the housing heat up occasionally. This prevents condensation from forming.
- When you close the door, a vacuum may be created. The door is then difficult to open again. Wait a moment until the vacuum is offset.
- The temperature in the appliance varies due to the following conditions:
  - How often the appliance is opened
  - Load capacity
  - Temperature of newly stored food
  - Ambient temperature
  - Direct sunlight

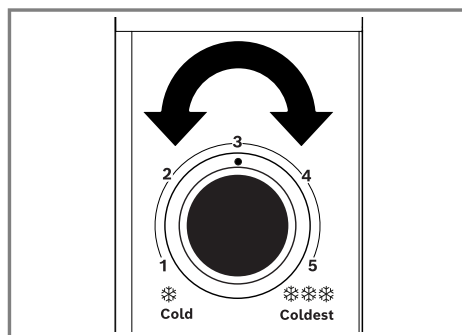
### 7.3 Switching off the appliance

- Disconnect the appliance from the power supply. Unplug the appliance from the mains or switch off the circuit breaker in the fuse box.

### 7.4 Setting the temperature

#### Setting the refrigerator compartment temperature

1. To reduce the temperature, turn the temperature controller in the **5 ❄❄❄❄** direction.  
Select a very cold setting only temporarily; if the door is opened frequently or before placing large quantities of food in the refrigerator compartment.
2. To increase the temperature, turn the temperature controller in the **1 ❄** direction.



**Note:** At a room temperature above 32 °C, turn the rotary selector to **5 ❄❄❄❄**.

At a room temperature below 16 °C, turn the rotary selector to **1 ❄**.

Setting the one-star freezer compartment temperature

- In order to set the one-star freezer compartment temperature, change the refrigerator compartment temperature.  
The refrigerator compartment temperature influences the one-star freezer compartment temperature. Refrigerator compartment temperatures that are set to warm generate warmer one-star freezer compartment temperatures.

Overview of the recommended temperature setting

Set the recommended temperature based on the season.

Season	Setting
Winter ❄ Room temperature below 20 °C	Level 2
Standard, monsoon ☁	Level 4
Summer ☀ Room temperature above 35 °C	Level 5

8 Refrigerator compartment

You can keep meat, sausage, fish, dairy products, eggs, prepared meals and pastries in the refrigerator compartment.  
The temperature can be set from level 1 to level 5.  
The refrigerator compartment can also be used to store highly perishable foods in the short to medium term. The lower the selected temperature, the longer the food remains fresh.

8.1 Tips for storing food in the refrigerator compartment

- Only store food when fresh and undamaged.
- Store food covered or in air-tight packaging.
- To avoid impeding the circulation of air and to prevent food from freezing, do not place food so that it has direct contact with the back wall.
- Allow hot food and drinks to cool down first before placing in the appliance.
- Observe the best-before date or use-by date specified by the manufacturer.

8.2 Chill zones in the refrigerator compartment

The air circulation in the refrigerator compartment creates different chill zones.

Coldest zone

The coldest zone is in the bottle rack.

**Tip:** Store highly perishable food such as fish, sausages and meat in the coldest zone.

Warmest zone

The warmest zone is on the shelf above the fruit and vegetable container.

**Tip:** Store food that does not spoil easily in the warmest zone, e.g. hard cheese and butter. Cheese can then continue to release its aroma and the butter will still be easy to spread.



## 8.3 Cooling capacity

The temperature in the refrigerator compartment may rise temporarily if loaded with fairly larger amounts of food or drinks.

**Tip:** Turn the temperature controller to a higher setting for approx. 12 hours.

---

## 9 One-star freezer compartment

You can use the one-star freezer compartment to gently freeze food at lower temperatures.

The temperature in the one-star freezer compartment depends on the temperature in the refrigerator compartment.

### 9.1 Freezer compartment door

To ensure that the frozen food that is stored does not thaw and the freezer compartment is not covered in too much ice, always close the freezer compartment door.

### 9.2 Tips for storing food in the freezer compartment

- Store food in air-tight packaging.
- Do not bring food which is to be frozen into contact with frozen food.
- Place the food over the whole area of the frozen food containers.

### 9.3 Tips for freezing fresh food

- Freeze fresh and undamaged food only.
- Freeze food in portions.

- Cooked food is more suitable than food that can be eaten raw.
- Vegetables: Wash, chop up and blanch before freezing.
- Fruit: Wash, pit and perhaps peel, possibly add sugar or ascorbic acid solution.
- Food that is suitable for freezing includes baked items, fish and seafood, meat, game, poultry, eggs without shells, cheese, butter and quark, ready meals and leftovers.
- Food that is unsuitable for freezing includes lettuce, radishes, eggs in shells, grapes, raw apples and pears, yoghurt, sour cream, crème fraîche and mayonnaise.

---

## 10 Defrosting

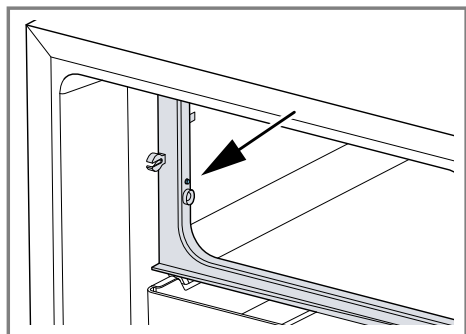
### 10.1 Defrosting in the refrigerator compartment

The refrigerator compartment in your appliance defrosts automatically.

### 10.2 Defrosting in the one-star freezer compartment

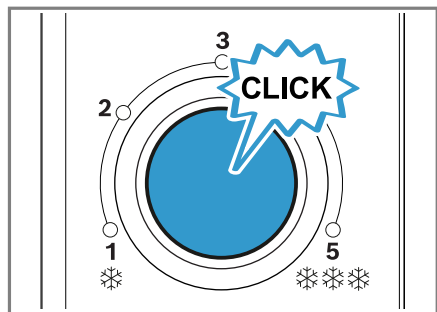
Hot and humid climate zones cause frost to form more quickly in the one-star freezer compartment, meaning that it needs to be defrosted more frequently.

Defrost the one-star freezer compartment every 3 days or whenever the defrost display is no longer visible.



## Defrosting the freezer compartment

1. To start the defrosting process, press on the temperature control (refrigerator compartment).



The temperature controller (refrigerator compartment) locks into place for the duration of the defrosting process.

- ✓ The defrosting process starts.
- 2. **⚠ WARNING - Risk of explosion!** If the cooling circuit is damaged, flammable refrigerant may escape and explode.
  - ▶ To accelerate the defrosting process, do not use any other mechanical devices or means other than those recommended by the manufacturer.
  - ▶ If food is stuck to the freezer compartment, loosen it with a blunt object such as the handle of a wooden spoon.

Carefully loosen the ice in the freezer compartment using a blunt object, e.g. a wooden honey dipper.

3. Wipe up the condensation water with a soft cloth or sponge.
  4. Rub the freezer compartment dry with a soft, dry cloth.
- ✓ At the end of the defrosting process, the temperature controller (refrigerator compartment) is automatically released.

## 11 Cleaning and servicing

To keep your appliance working efficiently for a long time, it is important to clean and maintain it carefully. Customer Service must clean inaccessible points. Cleaning by customer service can give rise to costs.

### 11.1 Preparing the appliance for cleaning

1. Disconnect the appliance from the power supply.
 

Unplug the appliance from the mains or switch off the circuit breaker in the fuse box.
2. Take out all of the food and store it in a cool place.
 

Place ice packs (if available) onto the food.
3. If there is a layer of hoarfrost, allow this to defrost.
4. Remove all fittings and accessories from the appliance.
 

→ Page 19

## 11.2 Cleaning the appliance

### **⚠ WARNING**

#### **Risk of electric shock!**

An ingress of moisture can cause an electric shock.

- ▶ Do not use steam- or high-pressure cleaners to clean the appliance.

Liquid in the lighting or in the controls can be dangerous.

- ▶ The rinsing water must not drip into the lighting or controls.

### **ATTENTION!**

Unsuitable cleaning products may damage the surfaces of the appliance.

- ▶ Do not use hard scouring pads or cleaning sponges.
- ▶ Do not use harsh or abrasive detergents.
- ▶ Do not use cleaning products with a high alcohol content.

If you clean fittings and accessories in the dishwasher, this may cause them to become deformed or discoloured.

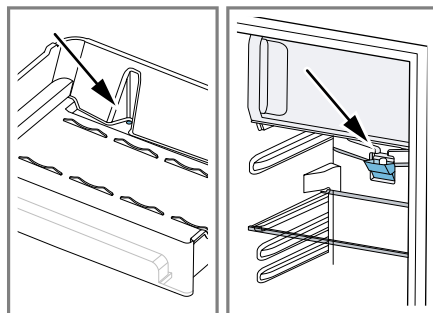
- ▶ Never clean fittings and accessory in the dishwasher.

1. Prepare the appliance for cleaning.  
→ *Page 18*
2. Clean the appliance, the fittings, the accessories and the door seals with a dish cloth, lukewarm water and a little pH-neutral washing-up liquid.
3. Dry thoroughly with a soft, dry cloth.
4. Insert the fittings.
5. Electrically connect the appliance.  
→ *Page 12*
6. Putting the food into the appliance.

## 11.3 Cleaning the drainage hole

Regularly clean the drainage holes to ensure that the condensation can drain.

1. Remove the bottle rack.  
→ *Page 20*
2. Carefully clean the drainage hole in the bottle rack and the drainage hole in the appliance, e.g. using a cotton bud.

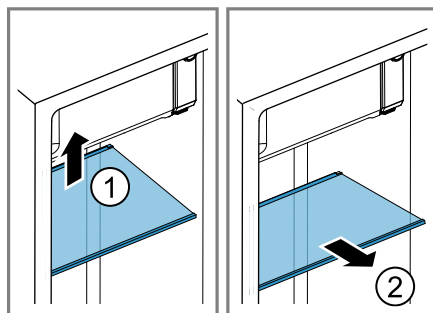


## 11.4 Removing the fittings

If you want to clean the fittings thoroughly, remove these from your appliance.

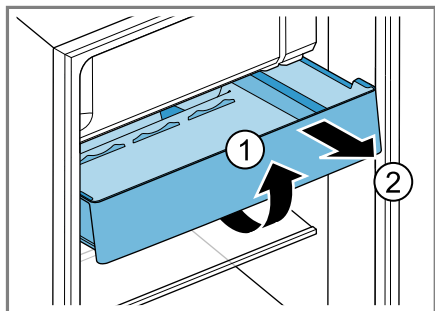
### **Removing the shelf**

- ▶ Lift the shelf at the rear ① and remove it ②.



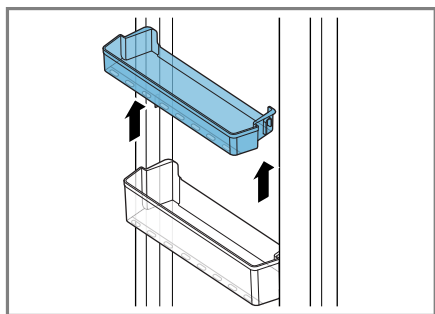
## Removing the bottle rack

- Lift the bottle rack at the front ① and remove it ②.



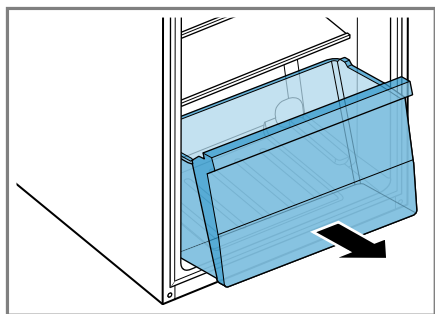
## Removing door tray

- Lift the door tray and remove it.



## Removing the fruit and vegetable container

- Pull out the fruit and vegetable container and remove it.



## 12 Troubleshooting

You can rectify minor faults on your appliance yourself. Read the troubleshooting information before contacting after-sales service. This will avoid unnecessary costs.



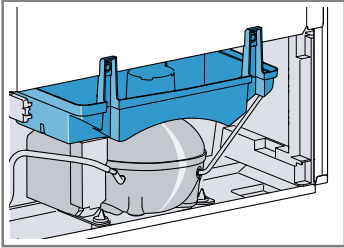
### **WARNING**

#### **Risk of electric shock!**

Improper repairs are dangerous.

- ▶ Repairs to the appliance should only be carried out by trained specialist staff.
- ▶ Only use genuine spare parts when repairing the appliance.
- ▶ If the power cord of this appliance is damaged, it must be replaced by the manufacturer, the manufacturer's Customer Service or a similarly qualified person in order to prevent any risk.

<b>Fault</b>	<b>Cause and troubleshooting</b>
The LED lighting does not work.	<p>Different causes are possible.</p> <ul style="list-style-type: none"> <li>▶ Call customer service.</li> </ul> <p>The customer service number can be found in the enclosed customer service directory.</p>
Condensation accumulates on the surface of the appliance and on the shelves inside.	<p>The water contained in warm and humid air condenses on the colder surfaces of the appliance.</p> <ol style="list-style-type: none"> <li><b>1.</b> Wipe away the condensation water with a soft, dry cloth.</li> <li><b>2.</b> Open the appliance as briefly as possible.</li> <li><b>3.</b> Ensure that the appliance is always closed properly.</li> </ol>

Fault	Cause and troubleshooting
Water is leaking out of the appliance.	<p data-bbox="376 158 1047 245">Excessive frost forms in the one-star freezer compartment and the evaporation pan overflows during the defrosting process.</p> <ol data-bbox="376 245 1047 453" style="list-style-type: none"><li data-bbox="376 245 1047 341">1. Disconnect the appliance from the mains. Unplug the appliance from the mains or switch off the circuit breaker in the fuse box.</li><li data-bbox="376 341 1047 397">2. Wipe away the condensation water with a soft, dry cloth.</li><li data-bbox="376 397 1047 453">3. Use a sponge to soak up the condensation water from the evaporation pan.</li></ol> <div data-bbox="406 467 750 715"></div> <ol data-bbox="376 730 1047 852" style="list-style-type: none"><li data-bbox="376 730 1047 852">4. Switch the appliance back on. → <i>Page 15</i><ul data-bbox="376 770 1047 852" style="list-style-type: none"><li data-bbox="376 770 1047 852">▶ Defrost the one-star freezer compartment every 3 days or whenever the defrost display is no longer visible. → <i>Page 18</i></li></ul></li></ol>
Appliance makes dripping noises while defrosting.	<p data-bbox="376 863 1047 951">Not a fault. Ice melts and water drops fall into the bottle rack and the evaporation tray on the rear of the appliance.</p> <p data-bbox="376 951 1047 975">No action required.</p>
The appliance hums, bubbles, buzzes, gargles or clicks.	<p data-bbox="376 986 1047 1098">Not a fault. A motor is running, e.g. refrigerating unit. Refrigerant flows through the pipes. The motor or switches are switching on or off.</p> <p data-bbox="376 1098 1047 1098">No action required.</p>
The appliance makes noises.	<p data-bbox="376 1109 1047 1133">The appliance is not level.</p> <ul data-bbox="376 1133 1047 1165" style="list-style-type: none"><li data-bbox="376 1133 1047 1165">▶ Place the appliance on a level surface.</li></ul>
	<p data-bbox="376 1176 1047 1200">The appliance is not free-standing.</p> <ul data-bbox="376 1200 1047 1232" style="list-style-type: none"><li data-bbox="376 1200 1047 1232">▶ Observe the minimum clearances for the appliance.</li></ul>
	<p data-bbox="376 1243 1047 1267">Fittings wobble or stick.</p> <ul data-bbox="376 1267 1047 1339" style="list-style-type: none"><li data-bbox="376 1267 1047 1339">▶ Check the removable fittings and, if required, replace these.</li></ul>
	<p data-bbox="376 1350 1047 1374">Bottles or containers are touching.</p> <ul data-bbox="376 1374 1047 1430" style="list-style-type: none"><li data-bbox="376 1374 1047 1430">▶ Move the bottles or containers away from each other.</li></ul>

## 12.1 Power failure

During a power failure, the temperature in the appliance rises; this reduces the storage time and the quality of the frozen food.

### Notes

- Open the appliance as little as possible during a power failure and do not place any other food in the appliance.
- Check the quality of the food immediately after a power failure.
  - Dispose of any frozen food that has defrosted and is hotter than 5 °C.
  - Cook or fry slightly thawed frozen food, and then either consume it or freeze it again.

---

## 13 Storage and disposal

### 13.1 Taking the appliance out of operation

1. Disconnect the appliance from the power supply.  
Unplug the appliance from the mains or switch off the circuit breaker in the fuse box.
2. Remove all of the food.
3. Defrost the appliance. → *Page 17*
4. Clean the appliance. → *Page 19*
5. To guarantee the ventilation inside the appliance, leave the appliance open.

## 13.2 Disposing of old appliance

Valuable raw materials can be re-used by recycling.

### **WARNING**

#### **Risk of harm to health!**

Children can lock themselves in the appliance, thereby putting their lives at risk.

- ▶ Leave shelves and containers inside the appliance to prevent children from climbing in.
- ▶ Keep children away from the redundant appliance.

### **WARNING**

#### **Risk of fire!**

If the tubes are damaged, flammable refrigerant and harmful gases may escape and ignite.

- ▶ Do not damage the tubes of the refrigerant circuit or the insulation.

1. Unplug the appliance from the mains.
2. Cut through the power cord.
3. Dispose of the appliance in an environmentally friendly manner.

Information about current disposal methods are available from your specialist dealer or local authority.



Dispose of packaging in an environmentally-responsible manner. This appliance is certified in accordance with the guidelines on E-waste (Management ) Rules 2022 which govern waste electrical and electronic equipment. The guideline provide a framework for the return and recycling of used appliances.

**Note:** This product doesn't contain any of hazardous substances as specified in the e-waste Management and Handling Rules 2022.

#### Dos

- Please visit our website <https://www.bosch-home.in/metapages/e-waste-management> to find out more details regarding e-waste disposal.
- Keep the product in isolated area, after it becomes non-functional/un-repairable so as to prevent its accidental breakage.
- Consult the authorized service center as to whether the Electronic Equipment can be repaired or not, before discarding.
- Consult the retailer about appliance take back schemes.

#### Don'ts

- The product should not be opened by the user himself/herself, but only by authorized service personnel.
- The product is not meant for re-sale to any unauthorized agencies/scrap dealers/kabariwalah.
- Don't dispose of the discarded Electronic Equipment in household bins or Municipal bins.

- Don't dump the discarded Electronic Equipment in the open or in any land fill site, as this will result in contamination of the soil and the ground water.
  - Do not keep any replaced spare part(s) from the product in exposed area.
- 

## 14 Customer Service

Detailed information on the warranty period and terms of warranty in your country is available from our after-sales service, your retailer or on our website.

If you contact Customer Service, you will require the product number (E-Nr.) and the production number (FD) of your appliance.

The contact details for Customer Service can be found in the enclosed Customer Service directory or on our website.

Helpline no.: 1800-266-1880  
(Monday to Saturday – 8 am to 8 pm)

Email ID: [service.in@bosch-home.com](mailto:service.in@bosch-home.com)

Chat with us (WhatsApp):  
+91-8451000555





## 14.1 Product number (E-Nr.) and production number (FD)

You can find the product number (E-Nr.) and the production number (FD) on the appliance's rating plate.

→ "Appliance", Fig. **1**/**3**, Page 13

Make a note of your appliance's details and the Customer Service telephone number to find them again quickly.

---

## 15 Technical data

Refrigerant, cubic capacity and further technical specifications can be found on the rating plate.

→ "Appliance", Fig. **1**/**3**, Page 13



A series of horizontal lines for writing, consisting of 20 lines in total. The lines are evenly spaced and extend across the width of the page.



A series of horizontal lines for writing, consisting of 20 lines in total. The lines are evenly spaced and extend across the width of the page.



## Thank you for buying a Bosch Home Appliance!

Register your new device on MyBosch now and profit directly from:

- **Expert tips & tricks for your appliance**
- **Warranty extension options**
- **Discounts for accessories & spare-parts**
- **Digital manual and all appliance data at hand**
- **Easy access to Bosch Home Appliances Service**

Free and easy registration – also on mobile phones:

**[www.bosch-home.com/welcome](http://www.bosch-home.com/welcome)**



## Looking for help? You'll find it here.

Expert advice for your Bosch home appliances, help with problems or a repair from Bosch experts.

Find out everything about the many ways Bosch can support you:

**[www.bosch-home.com/service](http://www.bosch-home.com/service)**

Contact data of all countries are listed in the attached service directory.

**BSH Household Appliances Manufacturing Pvt. Ltd.**

Arena house, 2nd floor, Main building,  
Plot no 103, Road no 12, MIDC,  
Andheri,  
Mumbai - 400 093

[www.bosch-home.in](http://www.bosch-home.in)



**8001290096** (040513)

en