



BOSCH

Register your
new device on
MyBosch now and
get free benefits:
**[bosch-home.com/
welcome](https://bosch-home.com/welcome)**



Hand Mixer

MFQ35...IN

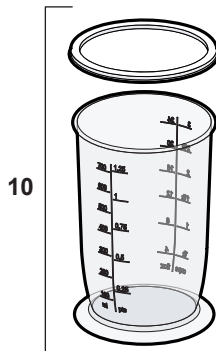
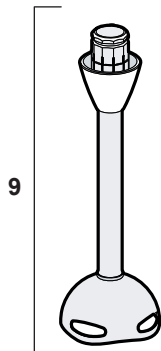
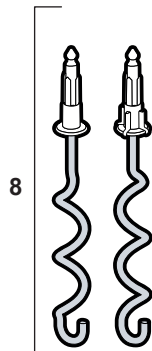
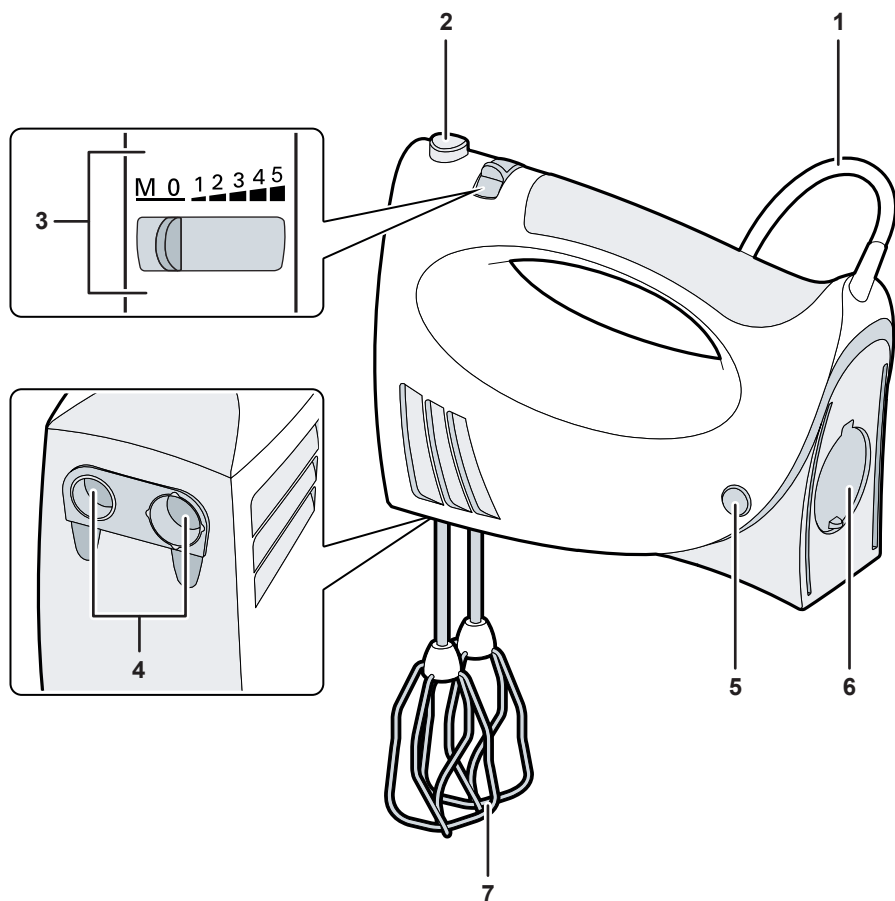
[en]

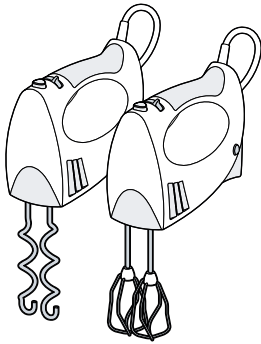
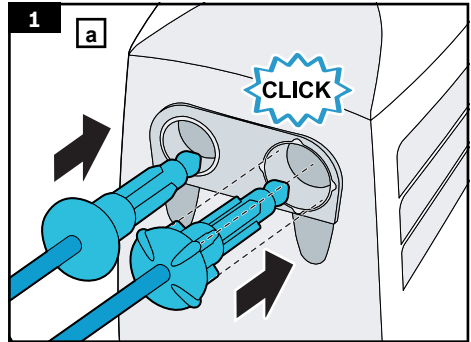
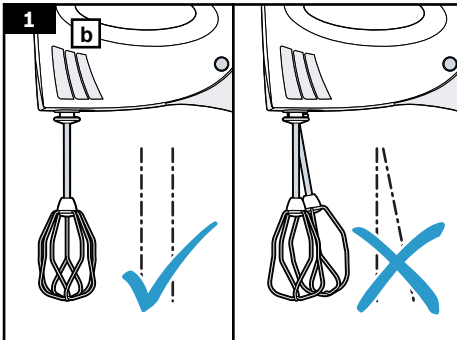
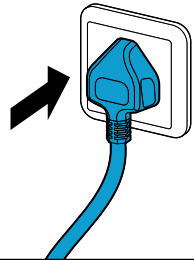
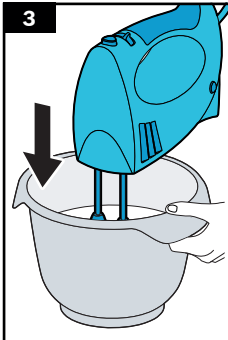
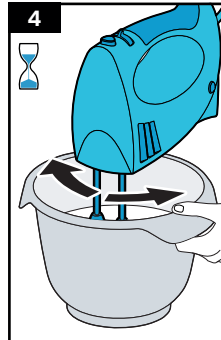
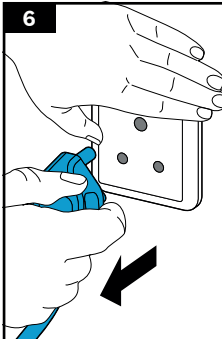
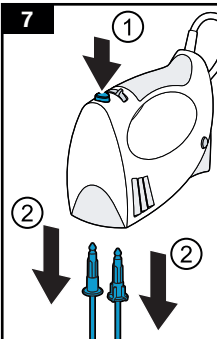
Instruction manual

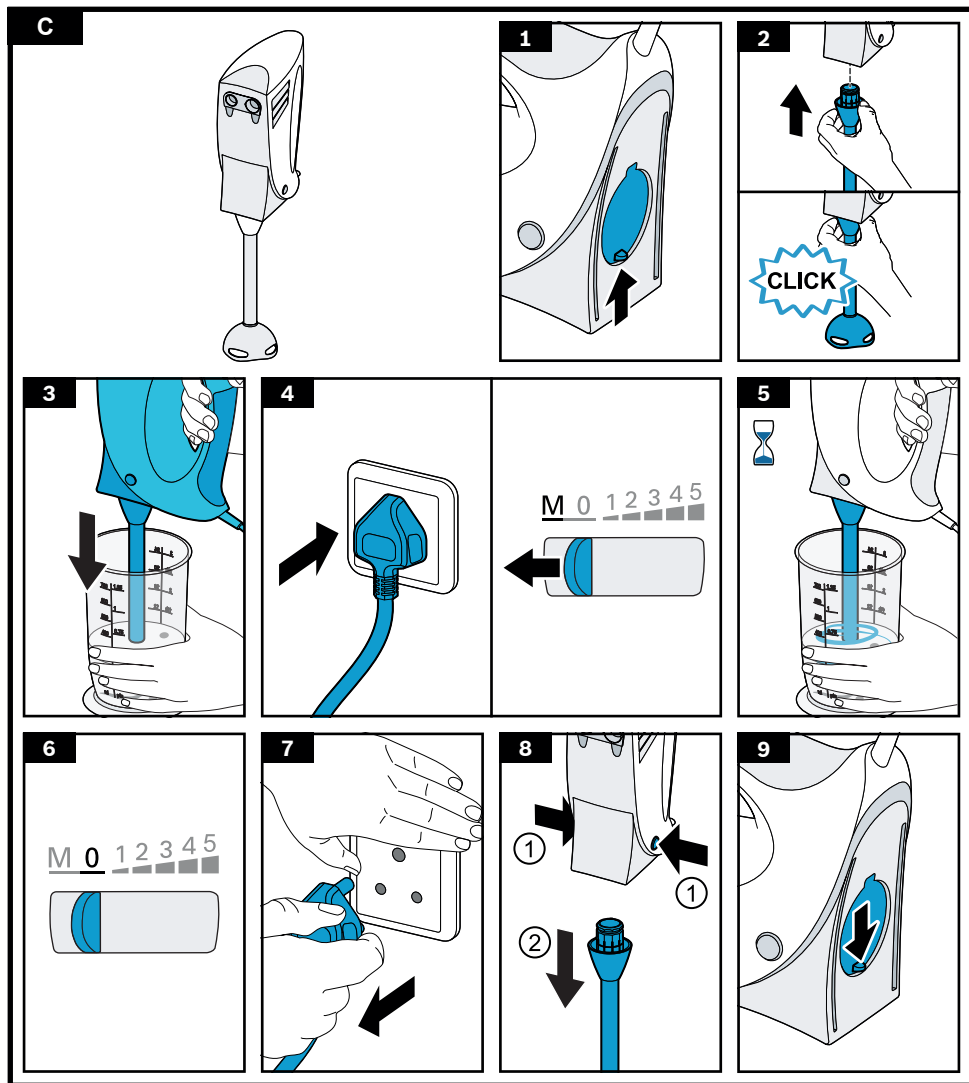
Hand Mixer

6

A

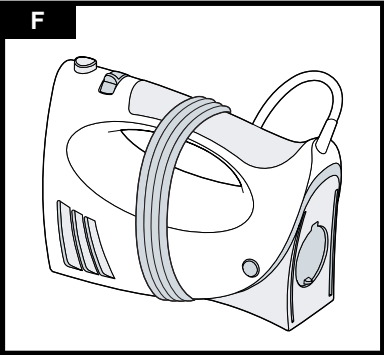
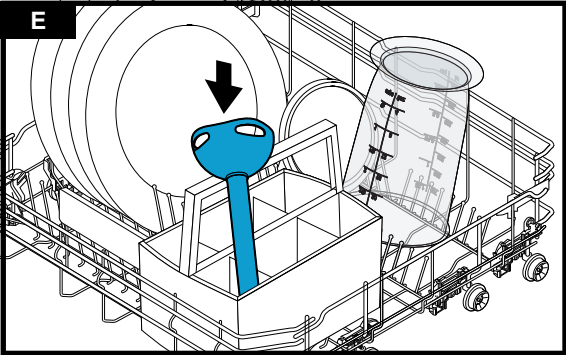


B**1****a****1****b****2****M 0 1 2 3 4 5****3****M 0 1 2 3 4 5****4****5****M 0 1 2 3 4 5****6****7**



D

	✓	⚠ X		✓	
	⚠ X	✓		✓	
	⚠ X	✓		✓	



G					
			200 - 600 g	5	1 - 8 min
			1 - 8 x	5	2 - 5 min
			Σ 600 - 1200 g	1 5	30 s 4 - 5 min
			Σ 500 - 1500 g	1 5	30 s 3 - 5 min
			350 - 500 g	1 5	30 s 4 - 5 min
			250 - 500 g	1 5	30 s 3 - 5 min
			1 x	M	2,5 min
	+		300 - 600 g	M	40 s - 3 min
	+		300 - 600 g	M	40 s - 3 min

Intended use

Read and follow the instruction manual carefully and keep for later reference! Enclose these instructions when you give this appliance to someone else.

If the instructions for correct use of the appliance are not observed, the manufacturer's liability for any resulting damage will be excluded.

This appliance is intended for domestic use only.

Use the appliance only for processing normal amounts of food and for normal amounts of time for domestic use.

The appliance is suitable for stirring, beating and mixing soft food-stuffs and liquids, and for kneading soft dough. With the high-speed hand blender, the appliance is suitable for cutting or mixing food. The appliance should not be used for processing other substances or objects.

This appliance can be used by persons with reduced physical, sensory or mental capabilities or lack of experience and/or knowledge if they have been given supervision or instruction concerning use of the appliance in a safe way and if they understand the hazards involved. Keep children away from the appliance and connecting cable and do not allow them to use the appliance. Children must not play with the appliance. Cleaning and user maintenance must not be performed by children.

Safety instructions

Risk of electric shock and fire!

Only use the appliance indoors at room temperature and up to 2000 m above sea level. Do not place the appliance on or near hot surfaces, e.g. hobs.

Connect and operate the appliance only in accordance with the specifications on the rating plate. Do not use the appliance if the power cord and/or appliance are damaged. Only our customer service may repair the appliance, e.g. by replacing a damaged power cord, in order to avoid hazards. The power cord must not come into contact with hot parts or be pulled across sharp edges.

Never immerse the base unit in water or place it in the dishwasher. Do not immerse the appliance in liquid above the joint between the high-speed hand blender and base unit. Do not steam-clean the appliance. Do not use the appliance with damp hands.

After each use, whenever the appliance is unsupervised, prior to assembly, prior to disassembly, prior to cleaning and in the event of an error, the appliance must always be disconnected from the mains.

⚠ Risk of injury!

Never connect the appliance to timer switches or remote-controllable sockets. If the power is interrupted, the appliance remains switched on and restarts when the power is restored. Switch off the appliance immediately. Never leave the appliance unattended while it is switched on! Never leave the appliance switched on for longer than is necessary to process the ingredients. Immediately after using the appliance, wait for it to stop. Before replacing accessories or additional parts, which move during operation, switch off the appliance and disconnect from the power supply. Do not attach or remove tools until the appliance is at a standstill – when switched off, the appliance continues running briefly. Do not operate the appliance at idle speed. Keep hands clear of rotating parts. Never grip the blade in the blender foot. Never clean blades with bare hands. Use a brush. Protect long hair or loose items of clothing to prevent them from becoming caught in the rotating tools. Use the appliance only with genuine parts and accessories. Only insert tools of the same type (e.g. 2x kneading hooks) in pairs. Never simultaneously use tools and an accessory inserted in the rear aperture.

⚠ Risk of scalding!

Take care when processing hot food. Hot food may splash during processing.

⚠ Risk of harm to health!

Soiling on surfaces may be harmful to health. Follow the cleaning instructions. Clean surfaces which come into contact with food before each use.

⚠ Important!

Before using the high-speed hand blender in a cooking pot, take the pot off the hotplate. The blender jug is not suitable for use in the microwave. It is essential to clean the appliance as described after each use or after it has not been used for an extended period.

➔ *“Cleaning” see page 9*

Congratulations on the purchase of your new Bosch appliance. You can find further information about our products on our website.

Content

Intended use.....	6
Safety instructions	6
Overview.....	8
Operation.....	8
Cleaning	9
Troubleshooting	9
Disposal.....	9

Overview

→ Fig. A

Base unit

1 Power cord

2 Ejector button

For removing the tools.

3 Switch

For switching the appliance on and off and adjusting the operating speed.

0 = switched off

1 = lowest speed

5 = highest speed

M = instantaneous switching (highest speed), press left and hold

4 Apertures for inserting the tools

5 Release buttons

For removing accessories from the rear aperture. Press both buttons simultaneously.

6 Rear aperture with lock

For inserting accessories, e.g. the high-speed hand blender.

Tools

7 Stirring whisks

8 Kneading hooks

Accessories

On some models

9 High-speed hand blender

10 Blender jug with lid

11 Universal cutter

(separate instruction manual)

If an accessory is not supplied as standard, it can be ordered from customer service.

Operation

- Before using the appliance for the first time, clean the base unit and tools.
- Always unwind the power cord completely.

Important note: When the rear aperture is open, the appliance can be operated using instantaneous switching only. Selector switch **1-5** will not function. Open and close the lock on the rear aperture only when the switch is in position **0**.

Always observe the maximum quantities and processing times in the table.

→ Fig. B

Base unit with tools

Beating whisks

The beating whisks can be used to whisk egg whites or beat cream. They can also be used to make light dough, e.g. sponge mixture, cake mixture, pancake batter.

They should not be used to make mayonnaise. To make mayonnaise, use the high-speed hand blender.

Kneading hooks

The kneading hooks can be used to make different types of dough, e.g. yeast dough, dough for pizzas or bread, pastry for strudel or shortcrust pastry.

The maximum processing quantity is 500 g flour and ingredients.

→ Fig. B

1. Insert the required pair of tools in the apertures and press on the tools until they engage.
 - a. **Note the shape of the plastic parts on the tools to avoid mixing them up.**
 - b. **Insert tools one after the other to stop them from getting caught!**
2. Insert the mains plug.
3. Insert the tools in the receptacle and switch the appliance on at the required level.
 - **Level 1, 2:** for working in and mixing in.
 - **Level 3, 4, 5:** for kneading and beating.
 - **Instantaneous switching M:** for mixing or beating ingredients quickly.
4. Move the mixer to and fro in the bowl while mixing. Never reach into the rotating tools.
5. As soon as the desired consistency is achieved, set the switch to **0** and wait for the appliance to come to a standstill.
6. Pull out the mains plug.
7. Release and remove the tools by pressing the ejector button. The ejector button cannot be actuated unless the switch is in the **0** position.

Base unit with high-speed hand blender

The high-speed hand blender is suitable for blending mayonnaise (only whole eggs), sauces, mixed drinks, baby food, cooked fruit and vegetables. For puréeing soups.

Use the universal cutter for cutting/chopping raw food (onions, garlic, herbs).

→ Fig. 9

1. Push up the lock on the rear aperture until it locks into position.
2. Insert the high-speed hand blender and lock into position.
3. Place the high-speed hand blender in the receptacle. To prevent food from splashing, immerse the high-speed hand blender in the food before switching on the appliance.

Warning!

Do not immerse the appliance in liquid above the joint between the high-speed hand blender and base unit.

4. Insert the mains plug. Turn the switch to setting **M** and hold.
 5. Process the ingredients as required.
- Tip:** The high-speed hand blender works better if there is some liquid between the ingredients being processed.
6. Release the switch.

Tip: To make cleaning the high-speed hand blender easier, after use place it in a receptacle containing clean water and briefly turn the switch to setting **M** several times.

7. Pull out the mains plug.
8. Remove the high-speed hand blender by simultaneously pressing both release buttons.
9. Close the lock on the rear aperture.

Cleaning

The appliance and the accessories used must be thoroughly cleaned after each use.

→ Table 2

⚠ Risk of electric shock!

Disconnect the mains plug before cleaning.

Warning!

- Do not use cleaning agents containing alcohol or spirits.
- Do not use sharp, pointed or metal objects.
- Do not use abrasive cloths or cleaning agents.
- Clean the **base unit** with a soft, damp cloth and then rub dry.
- Clean the **high-speed hand blender** in the dishwasher or with a brush under running water. Never clean blades with bare hands. Leave the high-speed hand blender to dry in an upright position (blender foot blade at top) so that any water inside can run out. → Fig. 10

→ Fig. 10

- The power cord can be wound up for storage of the appliance.

Troubleshooting

Problem:

Switch cannot be moved to Levels **1** to **5**.

Remedy:

When the rear aperture is open, selector switch will not function between Levels **1** and **5**. The lock must be completely closed.

Disposal



Save the environment - dispose your e-waste in an environmentally friendly manner by contacting designated e-waste collection centers. Please check our website <https://www.bosch-home.in/> for more details.

Changes reserved.

WARRANTY

1. This product is warranted by the company (warranty) to be free from defects in materials and workmanship for a period of 2 years from the date of purchase (warranty period)
2. This product is covered under warranty against any manufacturing defect or workmanship for a period of **TWO YEARS** from the date of purchase. Should a defect develop during the warranty period, Bosch undertakes to repair the appliance **FREE OF CHARGE** through any of the authorised service centres.
3. **Warranty and service:**
For any information, grievances or queries please contact our customer care helpline: 1-800-266-1880, or write to us at service.in@bosch-home.com. The company will register your service request and retain a computer record of your service request. To make a warranty claim, you must provide proof of purchase.
4. **CLAIM:**
 - a. The claim must be made within the warranty period.
 - b. Bosch will repair or replace any defective parts and correct any problems resulting from poor workmanship free of charge.
 - c. Service to the product shall be carried out at your home or the store, whereby the customer has to take the product to the store where the product was purchased at the purchaser's risk, responsibility and cost.
 - d. While the company will make every effort to carry out the necessary repairs at the earliest opportunity, the company is under no obligation to do so within a stipulated time period. Claims, if any, to this warranty shall in no case exceed the purchase price of the product.
 - e. In case of repairs or replacement of any part(s) of the product, this warranty will thereafter continue and remain in force only for the unexpired period of the warranty.
 - f. Replacement of parts would be purely at the discretion of the company alone. If the entire product is being replaced (subject to the sole discretion of the company), the same model will be replaced, and in the event such model has been discontinued, it shall be replaced with the model of equivalent price at the time of purchase.
- g. Replacement criteria from warranty terms do not stand if "no problem found" type diagnosis is made and perceived intermittent errors that cannot be reproduced are noticed.
- h. The authorised technician concerned will advise whether to effect repair on site or at the authorised service centre.
- i. This warranty will be terminated automatically after a period of 24 months from the date of purchase even if the product was not in use for any time during the warranty period for any reason.
5. This warranty shall be rendered null and void if:
 - a. The product is physically damaged
 - b. The product is modified, maintained or repaired by a party not authorised by Bosch.
 - c. The product is installed, maintained and operated in ways other than as recommended by Bosch.
 - d. The product is used for commercial purposes.
 - e. The product is faulty or damaged due to electrical faults external to the product.
 - f. Malfunctions or damage resulting from insects, natural calamities, fire and/or accidents.
 - g. The model number, serial number or warranty stickers have been removed or tampered with.
 - h. In case any spare part or any other part is used in the functioning of the appliance which does not comply with the safety parameters approved by Bosch.
6. **Warranty limitations**
 - a. The warranty is not transferable from one user/customer to another.
 - b. The Bosch warranty does not entail a warranty of functionality or any obligation to repair or replace a defective product if that defect is a result of physical breakage, improper installation or connections, electrical faults external to the product, misuse or unauthorised modification of the product.

WARRANTY CARD



Customer's Name		
Address		
City	Pin	State
Telephone	Mobile	
E-mail	Model/E-Nr	
Serial No.		
Date of Purchase	Date of Expiry	
Dealer's Name		
Dealer's Signature and Stamp	Customer's Signature	

Note: Warranty will start from the date of purchase.

Customer Service

Regardless of the nature of your concern, you can always be sure of personal attention from the Bosch Customer Service: on the internet and on the phone.

www.bosch-home.com/in

1-800-266-1880 (toll-free)

E-mail: service.in@bosch-home.com

**BSH Household Appliances
Manufacturing Pvt. Ltd.**

Arena House, 2nd Floor Main Building,
Plot No.103, Road No.12,
MIDC, Andheri East
Mumbai 400093

Toll Free 1-800-266-1880 *

www.bosch-home.com/in

* Mon-Sat: 8.00 am to 8.00 pm
(excluding public holidays)



8001199754

(000707)