



BOSCH

Register your
new device on
MyBosch now and
get free benefits:
**[bosch-home.com/
welcome](https://bosch-home.com/welcome)**



Cordless electric kettle

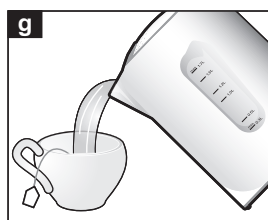
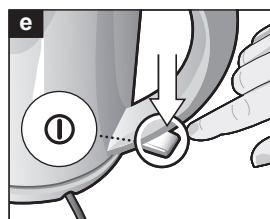
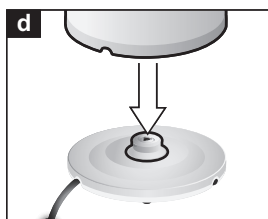
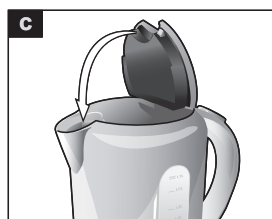
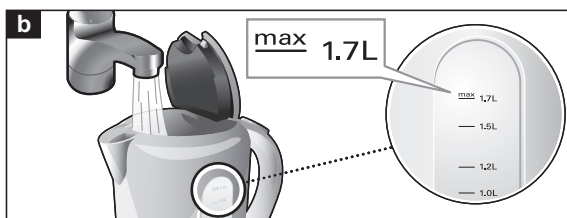
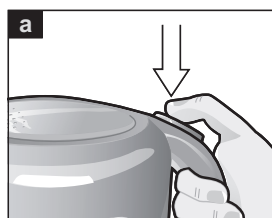
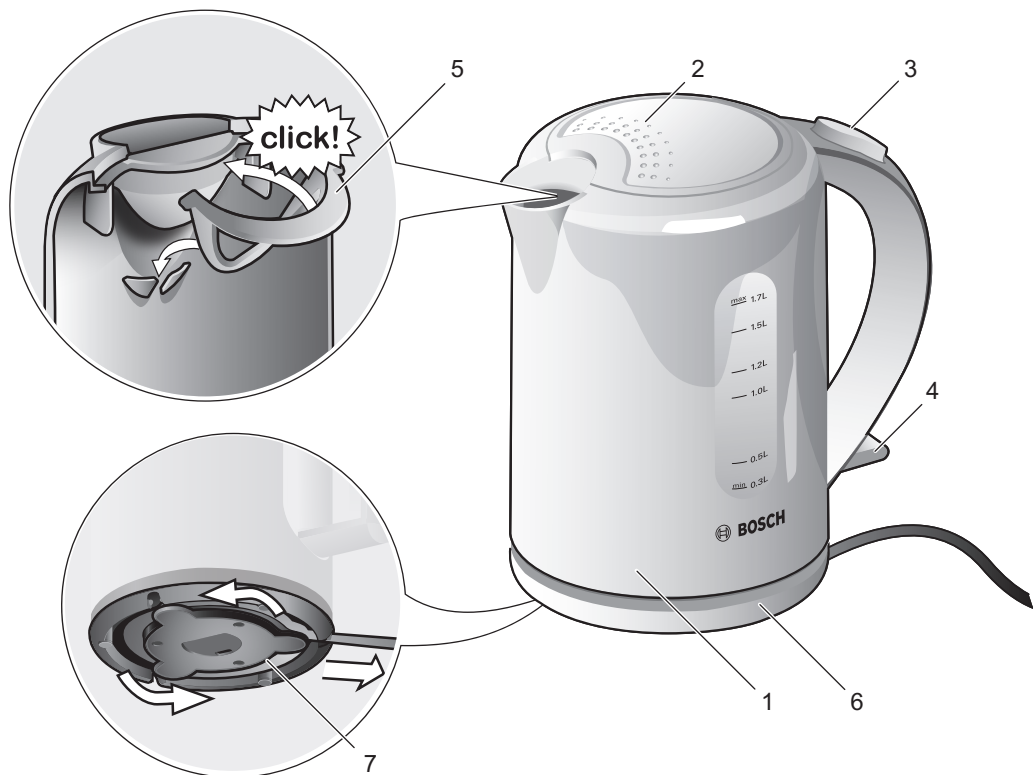
TWK7601IN

[en]

Instruction manual

Cordless electric kettle

2



Safety instructions

Please read and follow the operating instructions carefully and keep them for later reference. Enclose these instructions when you give this appliance to someone else. This appliance is intended for domestic use only.

Danger of electric shock!

Only use the appliance indoors at room temperature and up to 2000 m above sea level. The appliance may only be connected to a power supply with alternating current via a correctly installed socket with earthing. Ensure that the protective conductor system of the domestic supply has been correctly installed.

Connect and operate the appliance only according to the type plate specifications. To avoid potential hazards, repairs such as replacing a damaged cable must only be carried out by our customer service personnel.

This appliance can be used by children aged from 8 years and above and by persons with reduced physical, sensory or mental capabilities or lack of experience and knowledge if they have been given supervision or instruction concerning use of the appliance in a safe way and if they understand the hazards involved. Keep children under 8 years of age away from the appliance and connecting cable and do not allow them to use the appliance. Children shall not play with the appliance. Cleaning and user maintenance shall not be made by children unless they are older than 8 years and supervised.

Avoid spillage on the connector. Never immerse the appliance, base or mains cable in water.

Use the kettle only with the included base.

Use only if power cord and appliance show no signs of damage. Should a fault occur, pull the plug or disconnect from the mains immediately.

⚠ Risk of fire!

Do not place the base or kettle on or near hot surfaces, e.g. hobs. Avoid spatters of grease as the plastic may be damaged.

⚠ Risk of scalding!

The appliance heats up during use. Make sure you only pick it up by the handle and do not open the lid until the appliance has cooled down. Only use the appliance when the lid is engaged.

If the appliance is filled above the “max” marking, there could be a risk from splashes of boiling water.

⚠ Risk of burns!

After the use the heating element surfaces can be subjected to residual heat.



WARNING: Do not use this appliance near bathtubs, showers, basins or other vessels containing water.

⚠ Risk of suffocation!

Do not allow children to play with packaging material.

⚠ Risk of injury!

A misuse of the appliance can potentially lead to injury.

⚠ Caution!

Cleaning surfaces which come into contact with foodstuffs!

Please note the special information on cleaning in the instructions.

Congratulations on the purchase of your new Bosch appliance. You can find further information about our products on our website.

Parts and operating controls

- 1 Kettle (with water level indicator)
- 2 Lid
- 3 Lid opening button
- 4 On/Off switch, illuminated
- 5 Limescale filter (removable)
- 6 Base
- 7 Cable tidy

Important: Use the kettle only with its included base.

- **Only fill the kettle with water.** Milk and instant beverages will burn and damage the appliance. Never operate the kettle without water and do not overfill it; observe the **min** and **max** markings. If the kettle is too full, the water will boil over!

Before using for the first time

- Remove any stickers or film.
- Unroll the right amount of cable from the cable tidy and plug it in.
- Fill the kettle with water. Bring the water to a boil and discard it. Repeat the procedure. This will make sure that the kettle is clean for normal use.
- When the water comes to a boil for the first time, add a tablespoon of white vinegar.

Boiling water

- Fill the kettle with fresh water, either through the spout or by pressing the opening button to open the lid.
- Read the quantity on the water level indicator. Do not fill with less than 0.3 litres or more than 1.7 litres of water!
- Close the lid.
- Press down the switch; the switch lights up. The water is heated.

- The kettle switches off automatically once the water has boiled.

The appliance can also be switched off at any time by pulling up the switch.

Warning: If you remove the kettle from the base and replace it before the heating process is over, the kettle will not continue to heat the water.

N.B.: Only operate the kettle with the lid closed and the limescale filter inserted, otherwise the kettle will not switch off. For physical reasons, the base may collect some condensation water. This is normal; it does not mean that the kettle leaks.

After boiling, let the kettle cool down for 5 minutes before refilling it with water.

Do not turn on the appliance if the kettle is empty, otherwise the overheat control will engage and the appliance will switch itself off automatically.

Cleaning and maintenance

Risk of electric shock!

Never immerse the device in water or place it in the dishwasher!

Do not steam-clean the appliance.

- Before cleaning, unplug the appliance from the power outlet.
- Clean the outside of the kettle and base with a damp cloth. Do not use strong or abrasive cleaning agents.
- Remove the limescale filter, soak it in a little vinegar, then rinse clean with clear water.
- Rinse the kettle and the limescale filter with clear water.

Descaling

Regular descaling

- makes your kettle last longer;
- ensures proper function;
- saves energy.

Descale the kettle with vinegar or a commercial descaling agent.

- Fill the kettle with water up to the **1.7** mark and bring to a boil. Next, add a small amount of white vinegar and let it sit for several hours. You can also use a commercial descaling product and follow the manufacturer's instructions.
- Rinse the kettle and the limescale filter with clear water.

Warning: Never use hard objects to remove limescale residue as this will damage the seal.

Tip: If you use the kettle daily, descale more frequently.

Troubleshooting

The appliance does not heat and the switch does not light up.

- The overheat control has tripped.
- Let the kettle cool down for some time so that the appliance can be switched on again.

The unit turns off before the water comes to a boil.

- The kettle contains too much scale.
- Descale the kettle as per the instructions.

Technical data

Electrical connection	220-240 V~ 50/60 Hz
Output	1850-2200 W
Appliance height	235 mm
Appliance width	225 mm
Appliance depth	150 mm
Water capacity	1.70 L

Disposal



Dispose of packaging in an environmentally-friendly manner. This appliance is labelled in accordance with European Directive 2012/19/EU concerning used electrical and electronic appliances (waste electrical and electronic equipment – WEEE). The guideline determines the framework for the return and recycling of used appliances as applicable throughout the EU. Please ask your specialist retailer about current disposal facilities.

Guarantee

The guarantee conditions for this appliance are as defined by our representative in the country in which it is sold. Details regarding these conditions can be obtained from the dealer from whom the appliance was purchased. The bill of sale or receipt must be produced when making any claim under the terms of this guarantee.

Changes reserved.

WARRANTY

1. This product is warranted by the company (warranty) to be free from defects in materials and workmanship for a period of 2 years from the date of purchase (warranty period)
2. This product is covered under warranty against any manufacturing defect or workmanship for a period of **TWO YEARS** from the date of purchase. Should a defect develop during the warranty period, Bosch undertakes to repair the appliance **FREE OF CHARGE** through any of the authorised service centres.
3. **Warranty and service:**
For any information, grievances or queries please contact our customer care helpline: 1-800-266-1880, or write to us at service.in@bosch-home.com. The company will register your service request and retain a computer record of your service request. To make a warranty claim, you must provide proof of purchase.
4. **CLAIM:**
 - a. The claim must be made within the warranty period.
 - b. Bosch will repair or replace any defective parts and correct any problems resulting from poor workmanship free of charge.
 - c. Service to the product shall be carried out at your home or the store, whereby the customer has to take the product to the store where the product was purchased at the purchaser's risk, responsibility and cost.
 - d. While the company will make every effort to carry out the necessary repairs at the earliest opportunity, the company is under no obligation to do so within a stipulated time period. Claims, if any, to this warranty shall in no case exceed the purchase price of the product.
 - e. In case of repairs or replacement of any part(s) of the product, this warranty will thereafter continue and remain in force only for the unexpired period of the warranty.
 - f. Replacement of parts would be purely at the discretion of the company alone. If the entire product is being replaced (subject to the sole discretion of the company), the same model will be replaced, and in the event such model has been discontinued, it shall be replaced with the model of equivalent price at the time of purchase.
- g. Replacement criteria from warranty terms do not stand if "no problem found" type diagnosis is made and perceived intermittent errors that cannot be reproduced are noticed.
- h. The authorised technician concerned will advise whether to effect repair on site or at the authorised service centre.
- i. This warranty will be terminated automatically after a period of 24 months from the date of purchase even if the product was not in use for any time during the warranty period for any reason.
5. This warranty shall be rendered null and void if:
 - a. The product is physically damaged
 - b. The product is modified, maintained or repaired by a party not authorised by Bosch.
 - c. The product is installed, maintained and operated in ways other than as recommended by Bosch.
 - d. The product is used for commercial purposes.
 - e. The product is faulty or damaged due to electrical faults external to the product.
 - f. Malfunctions or damage resulting from insects, natural calamities, fire and/or accidents.
 - g. The model number, serial number or warranty stickers have been removed or tampered with.
 - h. In case any spare part or any other part is used in the functioning of the appliance which does not comply with the safety parameters approved by Bosch.
6. **Warranty limitations**
 - a. The warranty is not transferable from one user/customer to another.
 - b. The Bosch warranty does not entail a warranty of functionality or any obligation to repair or replace a defective product if that defect is a result of physical breakage, improper installation or connections, electrical faults external to the product, misuse or unauthorised modification of the product.

WARRANTY CARD



Customer's Name		
Address		
City	Pin	State
Telephone	Mobile	
E-mail	Model/E-Nr	
Serial No.		
Date of Purchase	Date of Expiry	
Dealer's Name		
Dealer's Signature and Stamp	Customer's Signature	

Note: Warranty will start from the date of purchase.

Customer Service

Regardless of the nature of your concern, you can always be sure of personal attention from the Bosch Customer Service: on the internet and on the phone.

www.bosch-home.com/in

1-800-266-1880 (toll-free)

E-mail: service.in@bosch-home.com

**BSH Household Appliances
Manufacturing Pvt. Ltd.**

Arena House, 2nd Floor Main Building,
Plot No.103, Road No.12,
MIDC, Andheri East
Mumbai 400093

Toll Free 1-800-266-1880 *

www.bosch-home.com/in

* Mon-Sat: 8.00 am to 8.00 pm
(excluding public holidays)



8001139577

(981112)