



# TASSIMO

## suny

智能胶囊咖啡机  
multi-beverage  
machine



**BOSCH**

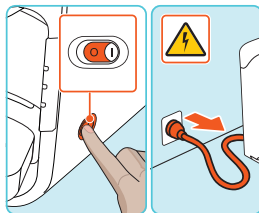


TASSIMO服务热线:  
400 601 0068 (仅限中国)  
TASSIMO hotline:  
400 601 0068 (China only)

8001137749 - 10/18

I. 关机, 断电。

Switch off and unplug.



清洁程序  
Cleaning

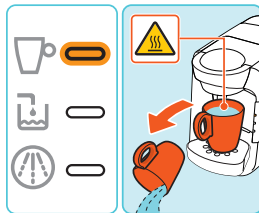
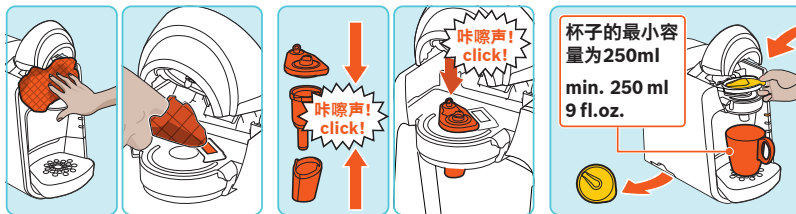
II. 将水箱、萃取单元及内部配件、可调节杯座按图拆下, 进行清洗。

Remove and clean the cup stand, the parts inside the brewing unit and the water tank as shown in the pictures.



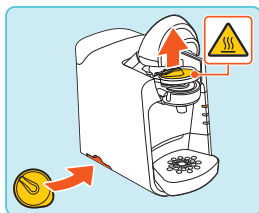
III. 用干净的湿抹布对智能扫码区及周围进行清洁, 如图将配件复位后放入“清洗盘”, 运行萃取单元内部清洁程序, 结束后完成完整的清洁程序。

Clean the inside of the brewing unit with a damp cloth as shown in the pictures. Reassemble the parts. Insert the yellow Service T DISC to rinse the machine (see 1. First Time Use, steps II.-IV.). Now the brewer is ready to use again.



IV. 将“清洗盘”放回储藏格。

Store the Service T DISC at the appliance.

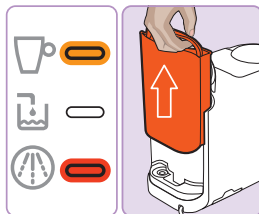




## 除垢程序 Descaling

- I. 除垢指示灯亮时,需加水至除钙线,对机器进行保养。

When the descaling LED lights up, the descaling program needs to be run.



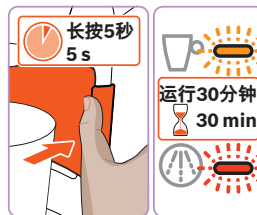
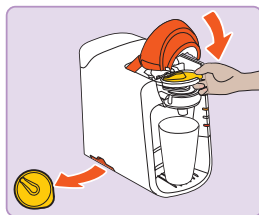
- II. 在装满水的水箱中放入2片TASSIMO除钙片,放空杯子于饮料出口下方,杯子最小容量为500ML。

Fill the tank up to the "descaling" mark and add 2 TASSIMO descaling tablets. Place a container with at least 500 ml / 17 fl. oz. underneath beverage outlet.



- III. 放入“清洗盘”,长按压开始5秒,机器自动运行除垢程序。

Insert the yellow Service T DISC and press the start/stop button for 5 sec. The descaling program will be run automatically.

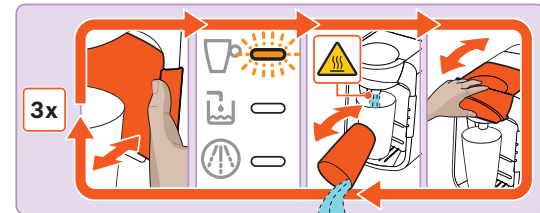


- IV. 冲洗水箱,换上干净的水,放入“清洗盘”,运行萃取单元内部清洁程序(务必运行3次)。

When the status LED and water tank LED light up, the machine needs to be rinsed. Clean the water tank and rinse the machine 3 times (see 1. First Time Use, steps II.-IV.).



购买网址:  
博西华电器专营店  
(天猫)  
tassimo旗舰店  
No TCZ6004



- V. 结束后完成完整的除垢程序。将“清洗盘”放回储藏格。

Remove the Service T DISC. Store the Service T DISC at the appliance. Now the brewer is ready to use again.

