



# TASSIMO

vivy



## TAS12A2

de Gebrauchsanleitung  
en Instruction manual  
fr Mode d'emploi  
es Instrucciones de uso  
it Istruzioni per l'uso  
sv Bruksanvisning  
da Brugsanvisning  
no Bruksanvisning  
el Οδηγίες χρήσης  
pl Instrukcja obsługi  
cs Návod k použití  
sk Návod na použitie  
ro Instrucțiuni de utilizare  
ru Правила пользования

# 2



**BOSCH**



**de** Inbetriebnahme  
**en** First time use  
**fr** La première utilisation  
**es** Puesta en servicio  
**it** Messa in funzione  
**sv** Idrifttagning  
**da** Ibrugtagning

**no** Første gangs bruk  
**el** Θέση σε λειτουργία  
**pl** Uruchamianie  
**cs** Uvedení do provozu  
**sk** Uvedenie do prevádzky  
**ro** Prima utilizare  
**ru** Ввод в эксплуатацию



**de** Getränkezubereitung  
**en** Beverage preparation  
**fr** Préparation de boissons  
**es** Preparación de bebidas  
**it** Preparazione delle bevande  
**sv** Tillredning av drycker  
**da** Tilberedelse af drikke

**no** Tilberedning av drikker  
**el** Παρασκευή ροφήματος  
**pl** Przygotowanie napoju  
**cs** Příprava nápojů  
**sk** Príprava nápojov  
**ro** Prepararea băuturilor  
**ru** Приготовление напитков



**de** Reinigen  
**en** Cleaning  
**fr** Nettoyage  
**es** Limpiar  
**it** Pulizia  
**sv** Rengöring  
**da** Rengøring

**no** Rengjøring  
**el** Καθαρισμός  
**pl** Czyszczenie  
**cs** Čistění  
**sk** Čistenie  
**ro** Curățarea  
**ru** Очистка



**de** Entkalken  
**en** Descaling  
**fr** Détartrage  
**es** Descalcificar  
**it** Decalcificare  
**sv** Avkalkning  
**da** Afkalkning

**no** Avkalking  
**el** Απασβέστωση  
**pl** Odkamienianie  
**cs** Odstranění vodního kamene  
**sk** Odstránenie vodného kameňa  
**ro** Decalcifierea  
**ru** Удаление накипи

**de** Stromschlaggefahr!  
**en** Risk of electric shock!  
**fr** Risque de choc électrique!  
**es** ¡Peligro de electrocución!  
**it** Rischio di scossa elettrica!  
**sv** Risk för elektrisk stöt!  
**da** Fare for elektrisk stød!  
**no** Fare for elektrisk støt!  
**el** Κίνδυνος ηλεκτροπληξίας!

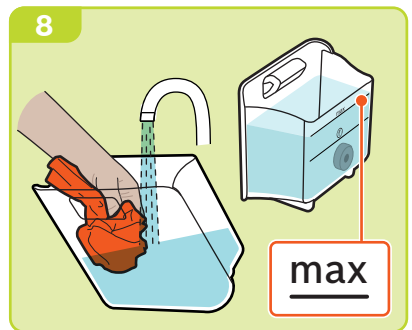
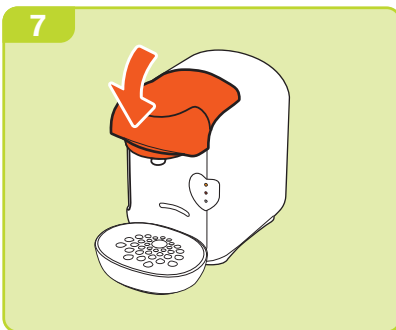
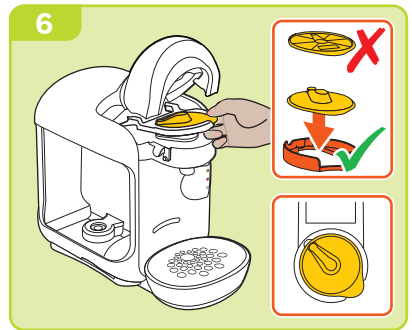
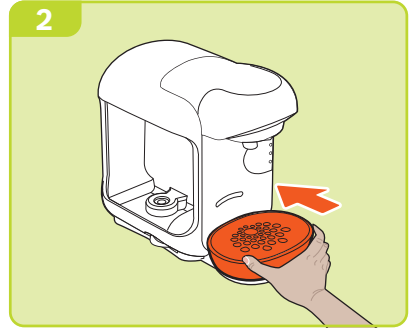
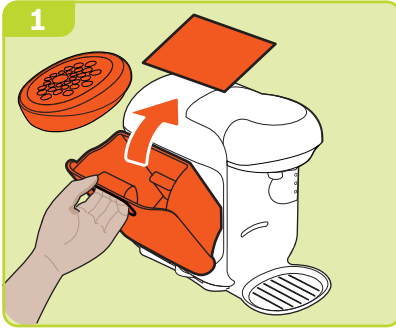
**pl** Niebezpieczeństwo porażenia prądem!  
**cs** Nebezpečí úrazu elektrickým proudem!  
**sk** Nebezpečenstvo zasiahnutia elektrickým prúdom!  
**ro** Pericol de electrocutare!  
**ru** Опасность поражения током!

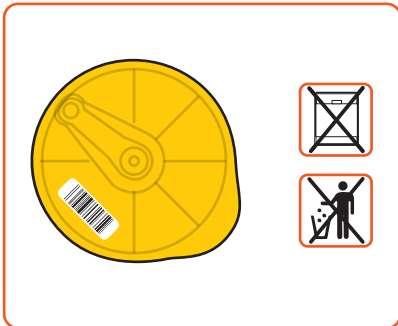
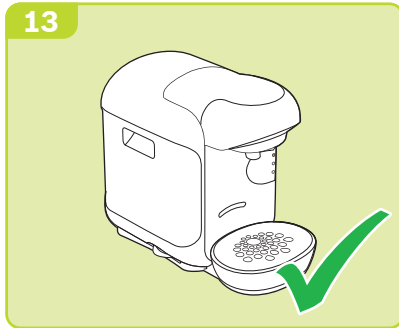
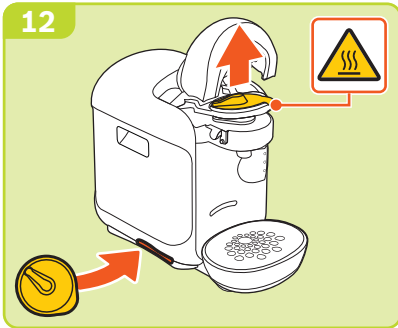
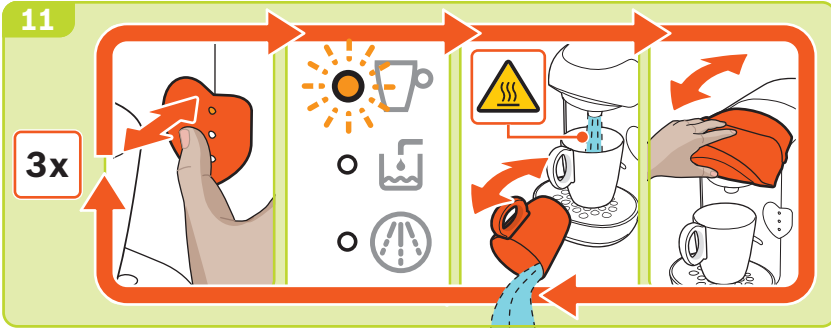
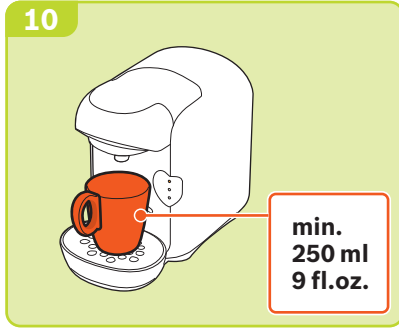
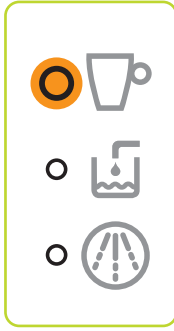
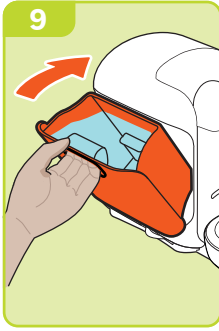


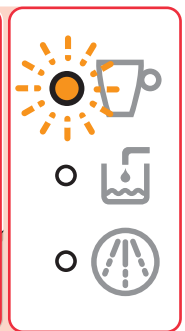
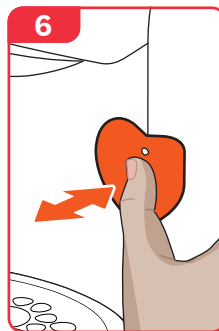
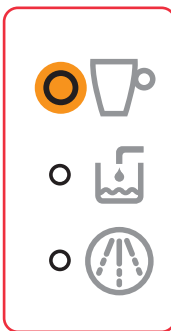
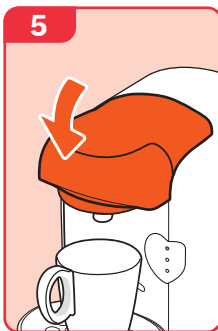
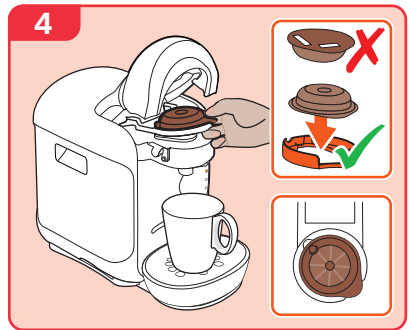
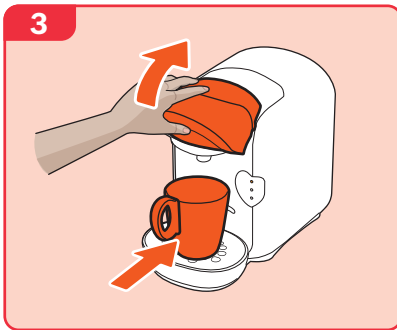
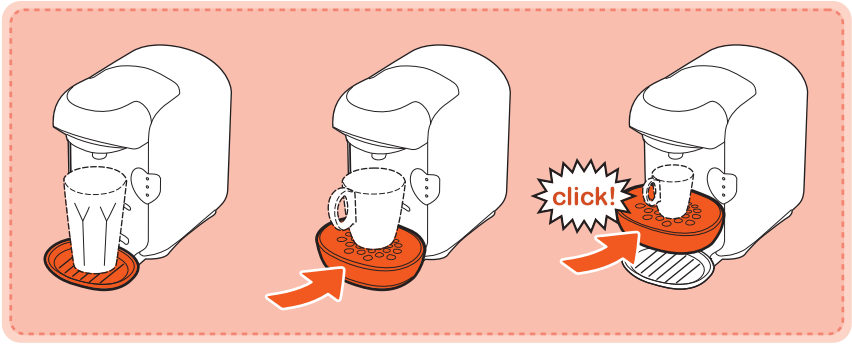
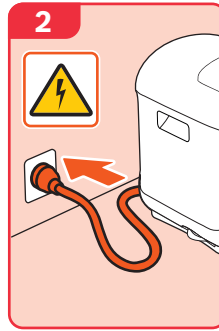
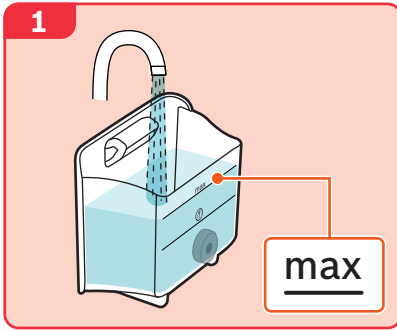
**de** Verbrennungsgefahr!  
**en** Risk of burns!  
**fr** Risque de brûlure!  
**es** ¡Peligro de quemaduras!  
**it** Pericolo di ustione!  
**sv** Brännskaderisk!  
**da** Fare for forbrænding!

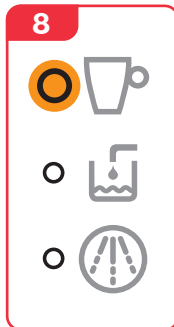
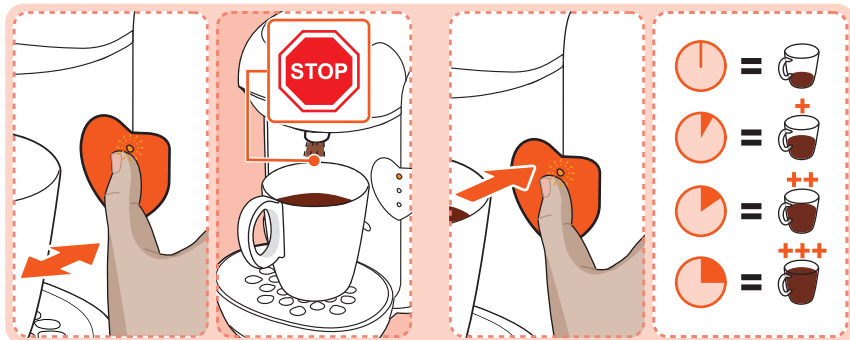
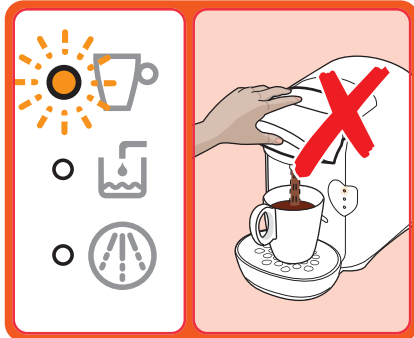
**no** Fare for forbrenning!  
**el** Κίνδυνος εγκαυμάτων!  
**pl** Niebezpieczeństwo poparzenia!  
**cs** Nebezpečí opaření!  
**sk** Nebezpečenstvo oparenia!  
**ro** Pericol de arsuri!  
**ru** Риск получения ожогов!

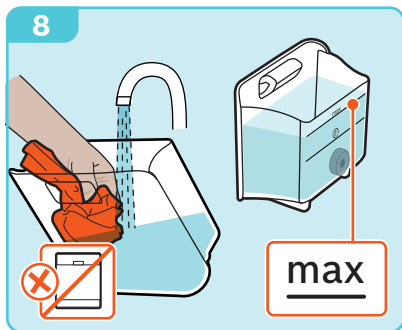
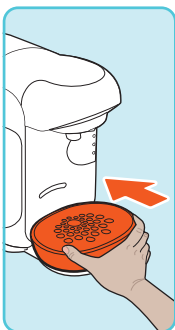
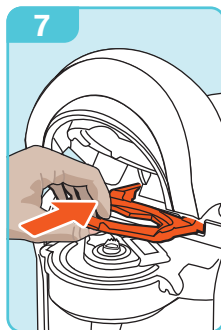
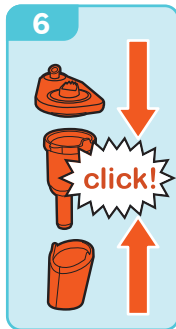
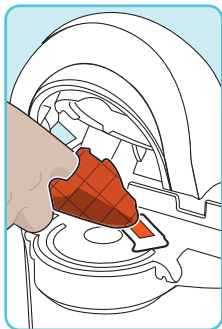
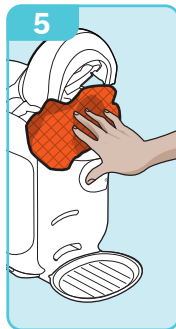
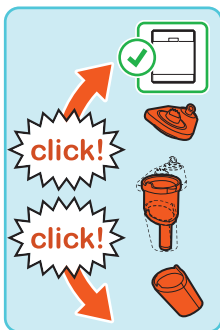
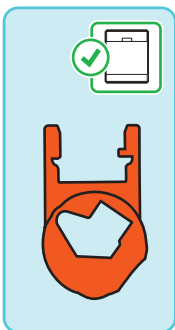
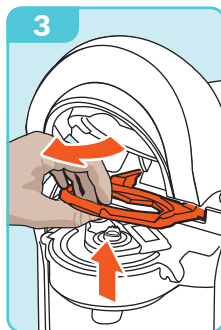
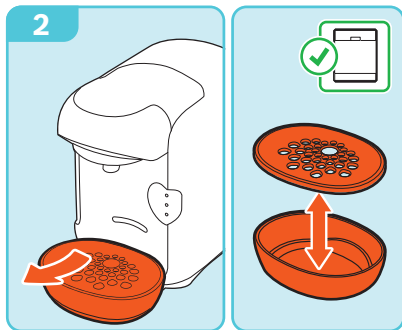
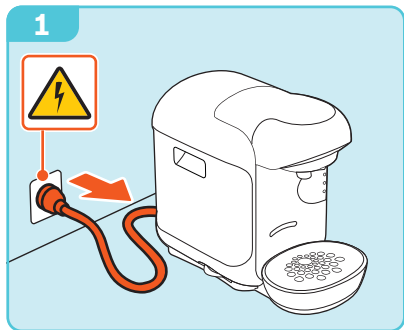




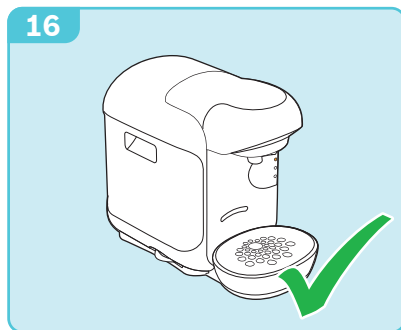
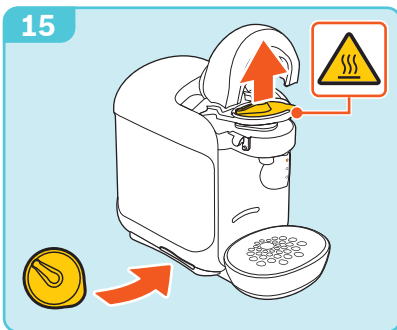
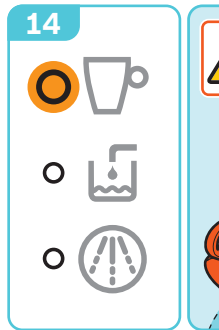
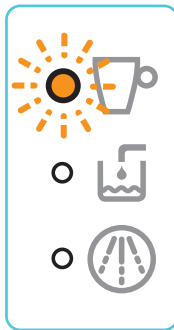
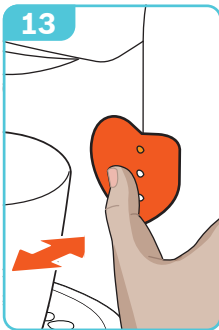
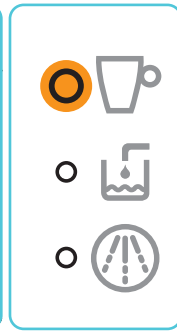
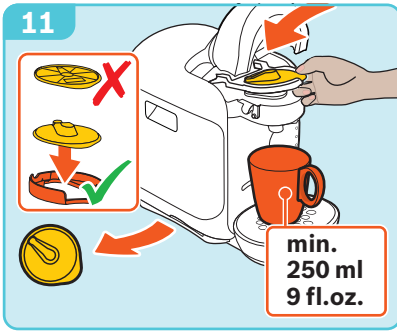
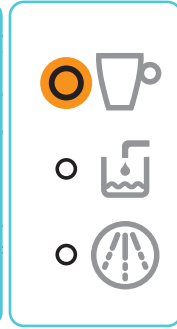
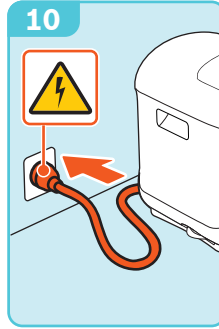
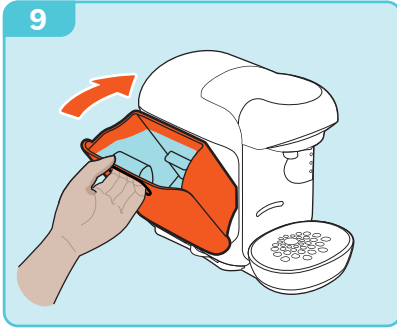


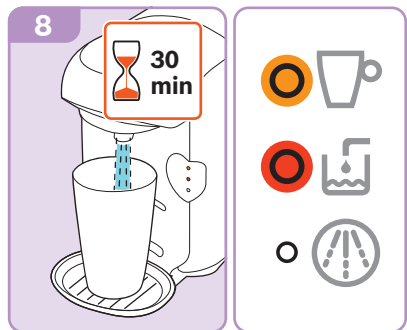
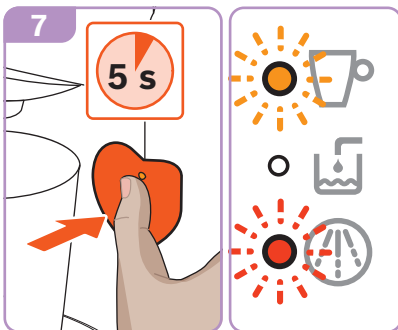
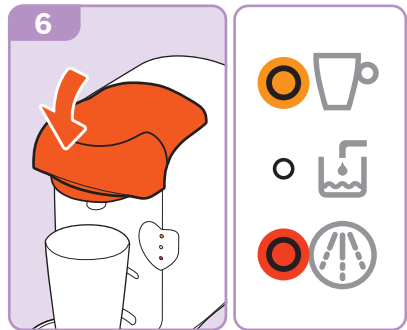
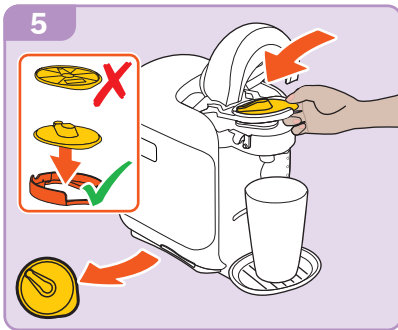
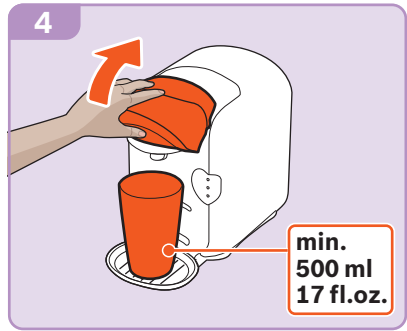
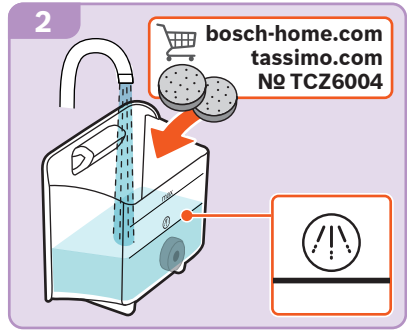
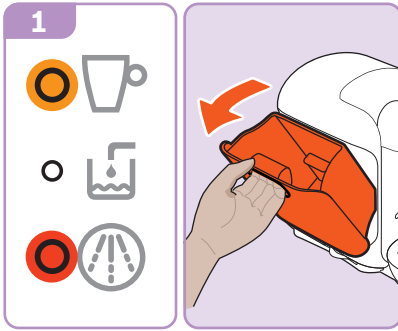


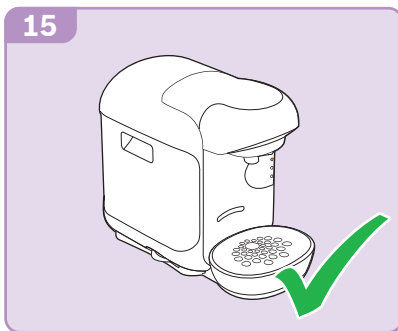
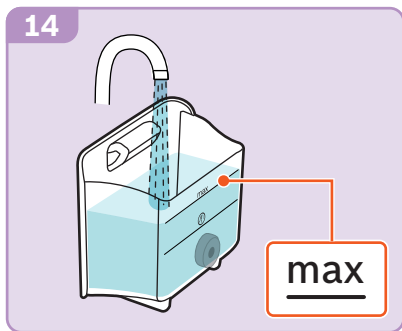
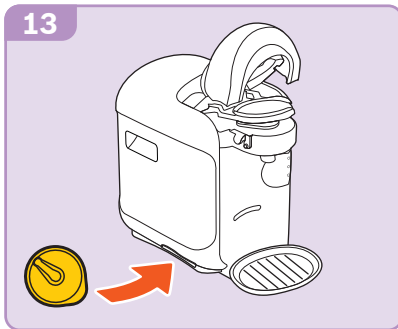
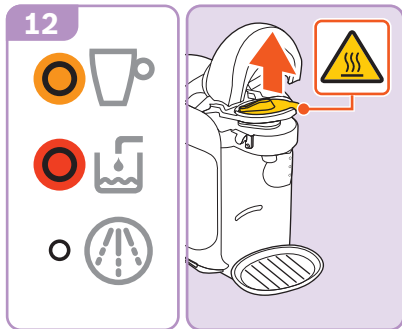
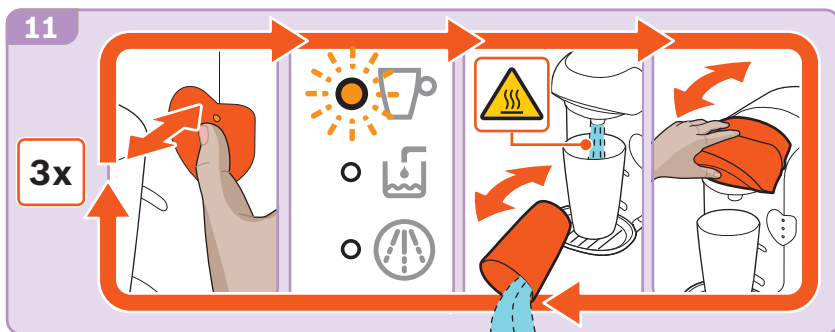
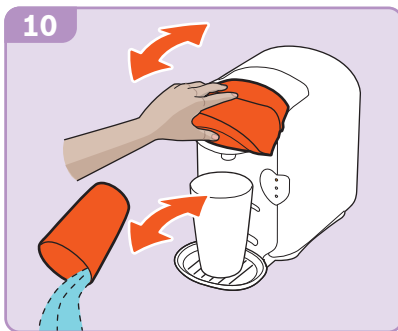
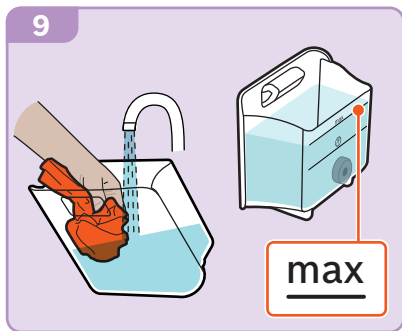














- de** Beachten Sie unbedingt die Sicherheitshinweise in der beiliegenden Gebrauchsanleitung – Teil 1! Dort finden Sie auch detaillierte Informationen zum Gebrauch, Garantiehinweise und Kontaktadressen.
- en** Always follow the safety instructions in the included manual part 1! You will also find detailed information regarding Care and Use, Warranty and Contact information for Customer Service.
- fr** Suivez toujours les consignes de sécurité fournies dans la partie 1 de ce manuel. Vous trouverez également des informations sur l'entretien, l'utilisation, les conditions de garantie et les coordonnées du service client.
- es** Lea atentamente estas instrucciones de uso y la información adjunta antes de utilizar la máquina. También encontrará información detallada referente al uso, garantía y direcciones de contacto.
- it** Seguire sempre le avvertenze di sicurezza nelle istruzioni per l'uso allegate – Parte 1! È inoltre possibile trovare informazioni dettagliate sull'uso, informazioni sulla garanzia e indirizzi di contatto.
- sv** Beakta säkerhetsanvisningarna i del 1 i den bifogade bruksanvisningen. Där hittar du också detaljerade informationer om användningen, garantin och kontaktadresser.
- da** Følg under alle omstændigheder sikkerhedsanvisningerne i den vedlagte brugsanvisning – del 1! Her finder du også detaljer om brug, garantioplysninger og kontaktadresser.
- no** Følg alltid instruksjonene i den vedlagte bruksanvisningen – del 1! Der finner du også detaljert informasjon om bruk, garantivilkår og kontaktadresser.
- el** Προσέξτε οπωσδήποτε τις υποδείξεις ασφαλείας στις συνημμένες οδηγίες χρήσης – μέρος 1! Εκεί θα βρείτε επίσης λεπτομερείς πληροφορίες για τη χρήση, υποδείξεις εγγύησης και διευθύνσεις επικοινωνίας.
- pl** Należy koniecznie przestrzegać instrukcji bezpieczeństwa w dołączonej instrukcji obsługi – część 1! Można znaleźć tam również szczegółowe informacje na temat użytkowania urządzenia, gwarancji oraz adresy kontaktowe.
- cs** Vždy dbejte bezpečnostních pokynů uvedených v příloženém návodu k použití – část 1! Zde najdete také podrobné informace týkající se použití, záruční podmínky a kontaktní adresy.
- sk** Venujte bezpodmienečne pozornosť bezpečnostným pokynom uvedeným v priloženom návode na použitie – časť 1! Tu nájdete aj podrobné informácie o používaní, záručné podmienky a kontaktné adresy.
- ro** Vă rugăm să respectați obligatoriu instrucțiunile de siguranță prezentate în instrucțiunile de utilizare atașate - partea 1! Acolo găsiți informații detaliate cu privire la utilizare, indicații referitoare la garanție și date de contact.
- ru** Обязательно соблюдайте указания по технике безопасности, которые приведены в части 1 инструкции по эксплуатации! В инструкции Вы найдете подробную информацию об использовании и гарантии, а также контактные данные.