



Register your new Bosch now:
www.bosch-home.com/welcome



BGL8...
Perfectionist



BOSCH

en Instruction manual

Table of content

Safety information	5
Intended use	5
Safety information	6
Proper use	6
Notes on energy label	10
Your vacuum cleaner	11
Replacement parts and special accessories	13
Before using your appliance for the first time	15
Connecting the flexible hose	15
Placing the Bionic filter	15
Initial use	16
Putting the handle and the telescopic tube together	16
Inserting the telescopic tube into the floor nozzle	17
Adjusting the telescopic tube	17
Attaching the accessories holder	18
Connecting the appliance	18
Switch on /off	19
Controlling the suction level	19
Vacuuming	20
Set the adjustable floor nozzle	20
Vacuuming with accessories	21
Professional upholstery nozzle	22
Parking aid	22
Carrying the appliance	23
After using this appliance	23
Disconnecting the appliance	23
Storing and transporting	24
Replacing the dust bag	24

Table of content

Changing the filter	25
Opening the lid	25
Changing the dust bag	25
Cleaning the motor protection filter	26
Replacing the Bionic filter	28
Replacing the micro-hygiene exhaust filter	29
Cleaning the EPA exhaust filter.....	29
Care	31
Disposal.....	32
Costumer Service	33
Conditions of guarantee	34

Congratulations on your purchase of the Bosch GL80 vacuum cleaner. You should only use original Bosch accessories, which have been specially developed for your vacuum cleaner, in order to achieve the best possible vacuuming results.

Please keep this instruction manual. When passing the vacuum cleaner on to a third party, please also pass on this instruction manual.

Intended use

This appliance is intended for domestic use only. This appliance is intended for use up to a maximum height of 2000 metres above sea level. Only use this vacuum cleaner in accordance with the instructions in this instruction manual.

In order to prevent injuries and damage, the vacuum cleaner must not be used for:

- Vacuum-cleaning persons or animals
- Vacuuming up:
 - hazardous, sharp-edged, hot or glowing substances.
 - damp or liquid substances.
 - highly flammable or explosive substances and gases.
 - ash, soot from tiled stoves and central heating systems.
 - toner dust from printers and copiers.

Spare parts, accessories, dust bags

Our original spare parts, original (special) accessories and original dust bags are designed to work with the features and requirements of our vacuum cleaners. We therefore recommend that you only use our original spare parts, original (special) accessories and original dust bags. This will ensure that your vacuum cleaner has a long service life and that the quality of its cleaning performance will remain consistently high throughout.

! Please note

Using unsuitable or inferior-quality spare parts, (special) accessories and dust bags can damage your vacuum cleaner. Damage caused by the use of such products is not covered by our guarantee.

Safety information

This vacuum cleaner complies with the recognised rules of technology and the relevant safety regulations.

- The appliance may be used by children over the age of 8 years and by persons with reduced physical, sensory or mental capacity or by persons with a lack of experience or knowledge if they are supervised or have been instructed on the safe use of the appliance and the have understood the potential dangers of using the appliance.
- Children must never play with the appliance.
- Cleaning and user maintenance must never be carried out by children without supervision.

Safety information

- Plastic bags and films must be kept out of the reach of children before disposal. => Risk of suffocation.

Proper use

- Only connect and use the vacuum cleaner in accordance with the specifications on the rating plate.
- Never vacuum without the dust bag or dust container, motor protection or exhaust filter.
=> This may damage the vacuum cleaner.
- Always keep the vacuum cleaner away from your head when using nozzles and tubes.
=> This could cause injury!
- When vacuuming stairs, the appliance must always be positioned below the user.
- Do not use the power cord or the hose to carry or transport the vacuum cleaner.
- For safety reasons, if this appliance's mains power cable becomes damaged, it must be replaced by the manufacturer, their after-sales service department or a similarly qualified person.
- If using the appliance for longer than 30 minutes, pull out the power cord completely.
- When disconnecting the appliance from the mains, pull on the plug itself to remove it; do not pull on the power cord.
- Do not pull the power cord over sharp edges or allow it to become trapped.

Safety information

- When the cable is being automatically rewound, ensure that the mains plug is not thrown towards persons, body parts, animals or objects.
=> Use the mains plug to guide the power cord.
- Pull out the mains plug before carrying out any work on the vacuum cleaner.
- Do not operate the vacuum cleaner if it is damaged. Unplug the appliance from the mains if a fault is detected.
- For safety reasons, only authorised after-sales service personnel are permitted to carry out repairs and fit replacement parts to the vacuum cleaner.
- Protect the vacuum cleaner from the weather, moisture and sources of heat.
- Do not pour flammable substances or substances containing alcohol onto the filters (dust bag, motor protection filter, exhaust filter, etc.).
- The vacuum cleaner is not suitable for use on construction sites.
=> Vacuuming up building rubble could damage the appliance.
- When not in use, switch off the appliance and pull out the mains plug.
- At the end of its life, the appliance should immediately be rendered unusable, then disposed of in an appropriate manner.

Safety information

! Please note

The mains socket must be protected by at least a 16 amp circuit breaker.

If a circuit breaker is tripped when you switch on the vacuum cleaner, this may be because other electrical appliances which have a high current draw are connected to the same power circuit.

To prevent the circuit breaker from tripping, select the lowest power setting before switching the appliance on, and increase the power only once it is running.

■ **Accessories**

Your accessories (nozzle, suction pipe, etc.) may look different from but work in the same way as those depicted in the illustrations in this instruction manual.

Notes on the energy label

This vacuum cleaner is a general purpose vacuum cleaner with a primary hose.

To achieve the declared energy efficiency and cleaning performance class on carpet, please use the interchangeable universal nozzle.

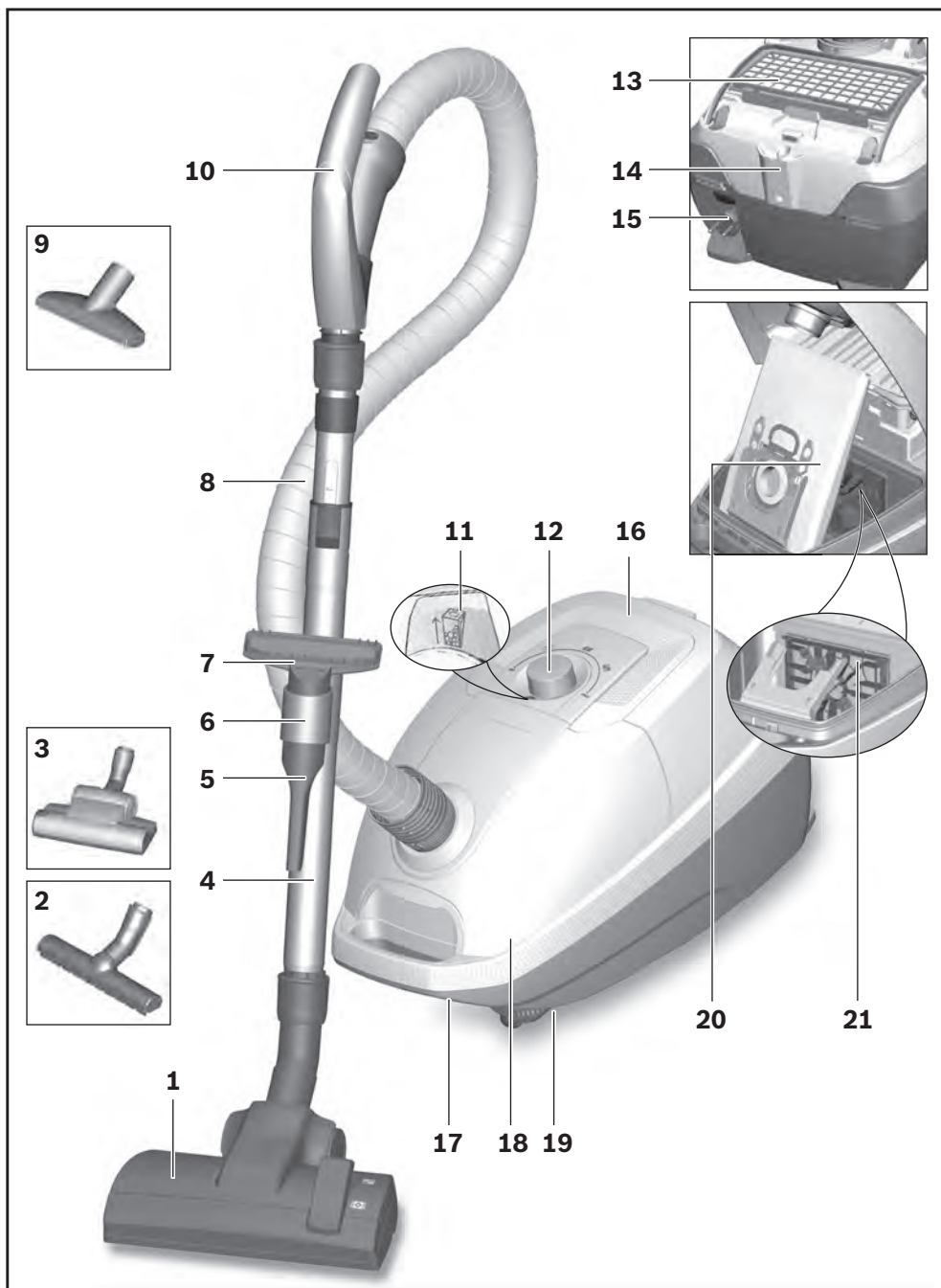
To achieve the declared energy efficiency and cleaning performance class on hard floor with nooks and crannies, please use the hard floor nozzle provided.

These calculations are based on the Commission Delegated Regulation (EU) No. 665/2013 of 3rd May 2013 supplementing Directive 2010/30/EU.

Unless otherwise stated, all the procedures referred to in these instructions were carried out in accordance with the EN 60312-1:2017* standard.

*As the motor service test is carried out with the dust collector empty, the stated motor service life must be increased by 10% for tests with the dust collector half filled.

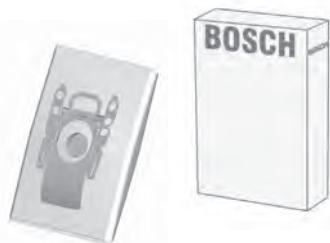
Your vacuum cleaner



Your vacuum cleaner

- | | | | |
|---|------------------------------------------------------------------------------------------------------------------------|----|------------------------------------------------------|
| 1 | Adjustable floor nozzle
(For the same functions,
the appearance of the
nozzle may differ from the
picture) | 10 | Hose handle |
| 2 | Hard-floor nozzle | 11 | Dust bag change indicator |
| 3 | “Animal” turbo nozzle | 12 | Power rotary control and
on/off switch |
| 4 | Telescopic tube with sli-
ding switch (and accesso-
ry connection) | 13 | Exhaust filter |
| 5 | Crevice nozzle | 14 | Parking aid |
| 6 | Accessories holder | 15 | Power cord |
| 7 | Upholstery nozzle | 16 | Rear flap |
| 8 | Pet hair upholstery tool | 17 | Carrying handle |
| 9 | Flexible hose | 18 | Dust bag compartment lid |
| | | 19 | Storage aid (on the under-
side of the appliance) |
| | | 20 | Dust bag |
| | | 21 | Motor protection filter |

A



A Replacement filter package

Type PowerProtect Dustbag

Sparepart No. 00577549

Contents:

- 4 dust bags with fasteners
- 1 micro-hygiene filter

We therefore recommend that you only use our original dust bags.

Your appliance is a highly efficient vacuum cleaner that achieves excellent cleaning results when used with high-quality dust bags. Only by using high-quality dust bags (such as Bosch original dust bags) can you ensure that your vacuum cleaner is working at the energy efficiency class, dust pick-up rate and dust retention capacity listed on its EU energy label.

The use of inferior-quality dust bags (e.g. paper bags) can have a negative effect on the service life and performance of your appliance. Using unsuitable or inferior-quality dust bags can also damage your vacuum cleaner. Such damage is not covered by our guarantee.

You can find more information about this at

www.bosch-home.com/dust-bag.

You can order our original vacuum cleaner bags here.

Replacement parts and special accessories

B



B Washable microfilter

Protects the motor of your vacuum cleaner, thus increasing its service life.

C



C Hard-floor nozzle BBZ123HD

For vacuuming hard floors (parquet, tiles, terracotta, etc.)

D



D Hard-floor nozzle BBZ124HD

Innovative "soft & roll" hard-floor nozzle:

2 rotating brush rollers made from natural hair.

Coarse dirt is not pushed away.

E



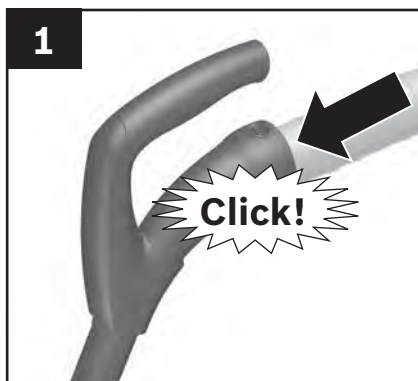
E Bionic filter BBZ11BF

Combats unpleasant odours over a long period

Please replace the filter once it begins to lose its effect (after approx. 1 year)

Ordering code: 468637

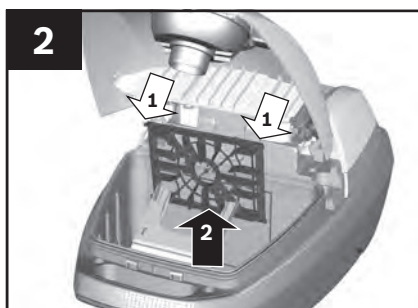
Before using your appliance for the first time



Connecting the flexible hose

Fig. 1

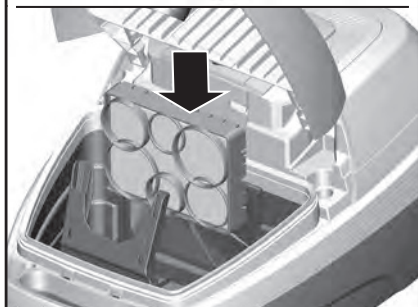
- Push the handle onto the flexible hose and lock it in place.



Placing the Bionic filter

Fig. 2

- Open the dust bag compartment lid. **Fig. 19**
- Remove the motor protection filter from the appliance.
- Place the Bionic filter onto the motor protection filter.
- Push the filters into the appliance and close the dust bag compartment lid.



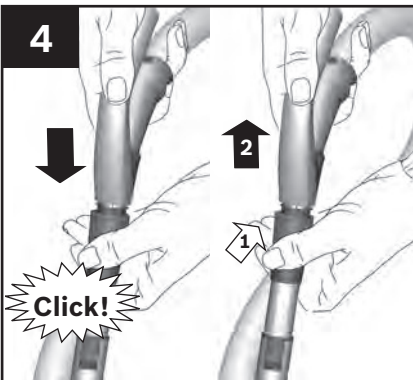
Initial use



Fig. 3

a) Push the flexible hose adapter into the air intake opening in the lid until it locks in place.

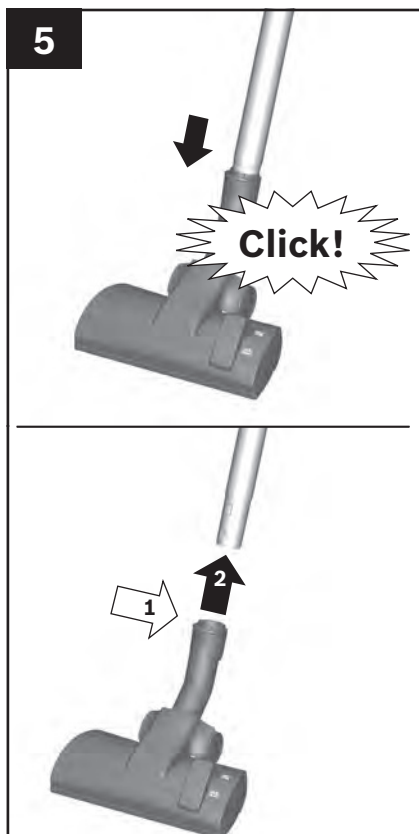
b) To remove the flexible hose, press the two catches together and pull out the hose.



Putting the handle and the telescopic tube together

Fig. 4

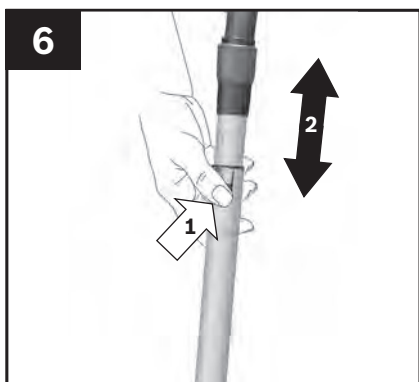
- Push the handle into the telescopic tube until it locks into place.
- To release the connection, press the locking collar and pull out the telescopic tube.



Inserting the telescopic tube into the floor nozzle

Fig. 5

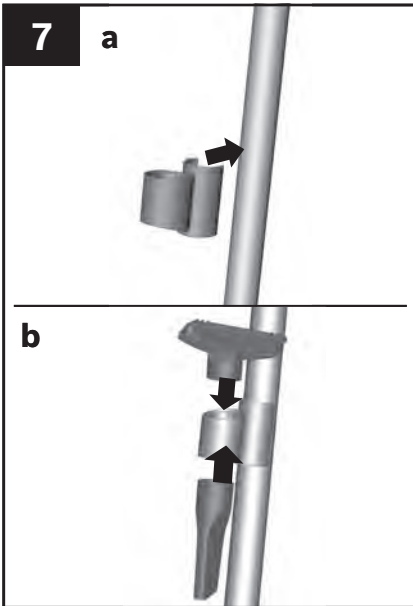
- Push the telescopic tube into the connecting piece of the floor nozzle until it locks in place.
- To release the connection, press the locking collar and pull out the telescopic tube.



Adjusting the telescopic tube

Fig. 6

- Unlock the telescopic tube by moving the sliding switch in the direction of the arrow, and adjust to the desired length.

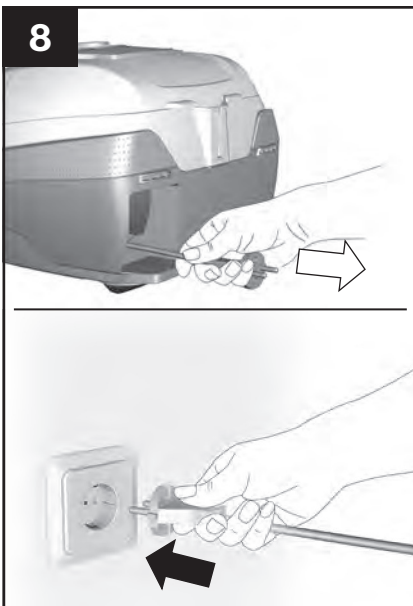


Attaching the accessories holder

Fig. 7

a) Place the accessories holder in the required position on the telescopic tube.

b) Use some pressure to insert the upholstery nozzle with hard furnishings brush and the crevice nozzle into the accessories holder from above or below.



Connecting the appliance

Fig. 8

- Holding the power cord by the plug, pull it out to the required length and insert the plug into the mains socket.

! If using the appliance for longer than 30 minutes, pull out the power cord completely.

=> Risk of overheating and subsequent damage.

9

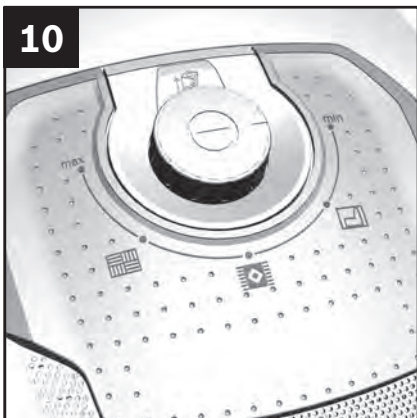


Switching on and off

Fig. 9

- To switch the vacuum cleaner on or off, press the rotary control.

10





Controlling the suction level


Fig. 10

Turn the rotary control to infinitely adjust the suction level to the level required.

min - For vacuuming curtains and delicate textiles

 - For vacuuming upholstered furniture and cushions

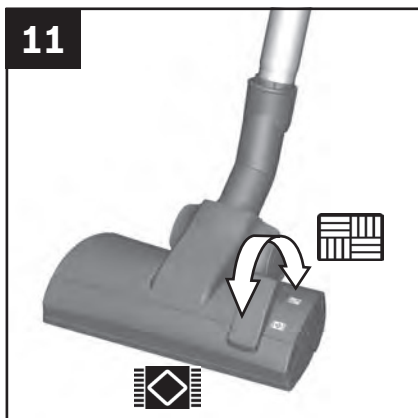
 - For vacuuming delicate rugs and for daily vacuuming of lightly soiled floors

 - For vacuuming durable floor coverings

max - For vacuuming hard floors and heavily soiled rugs and carpets



! Caution:

- Floor nozzles are subject to a certain amount of wear, depending on the type of hard floors you have (e.g. rough, rustic tiles). You must therefore check the underside of the floor nozzle at regular intervals. Worn undersides of floor nozzles may have sharp edges that can damage sensitive hard floors, such as parquet or linoleum. The manufacturer does not accept any responsibility for damage caused by worn floor nozzles.



Set the adjustable floor nozzle

Fig. 11

- Rugs and carpets => 
- Hard floors/parquet => 

12

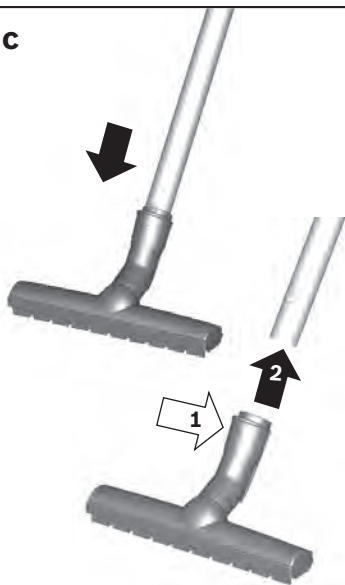
a



b



c



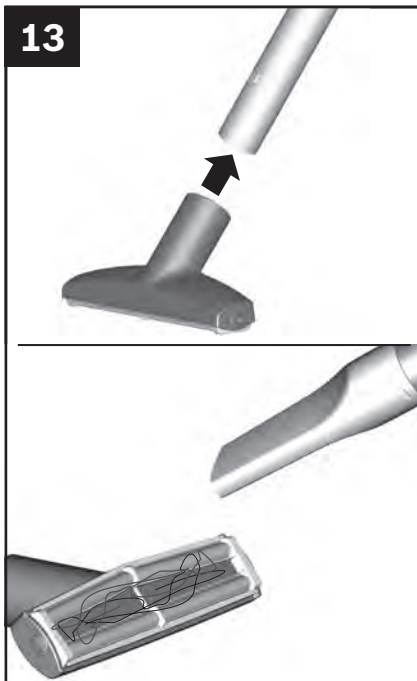
Vacuuming with accessories

Fig. 12

Attach the nozzles to the suction pipe or handle as required:

- a) Crevice nozzle for vacuuming crevices and corners, etc.
- b) Upholstery nozzle for vacuuming upholstered furniture, curtains, etc.
- c) Hard-floor nozzle
 - For vacuuming hard floor coverings (tiles, parquet, etc.)
 - Push the telescopic tube into the connecting piece of the hard-floor nozzle until it locks in place.
 - To release the connection, press the locking collar and pull out the telescopic tube.

13

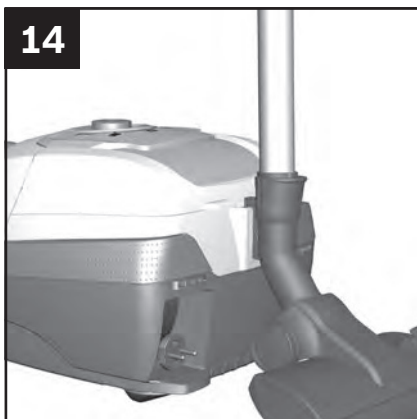


Professional upholstery nozzle

Fig. 13

- For intensive cleaning of upholstered furniture (attach to the handle or suction pipe, depending on requirements).
- To clean the professional upholstery nozzle, simply vacuum it using the handle.
- If it is very dirty, the professional upholstery nozzle can also be opened. To do this, turn the two screws on the sides of the nozzle (e.g. using a coin) and remove the inner part from the nozzle.
- After cleaning, replace the inner part (make sure it is correctly seated) and screw to the housing.

14



Parking aid

Fig. 14

- You can use the parking aid on the back of the vacuum cleaner if you want to stop vacuuming for a short time.
- After switching off the appliance, slide the hook on the floor nozzle into the recess on the back of the appliance.

15



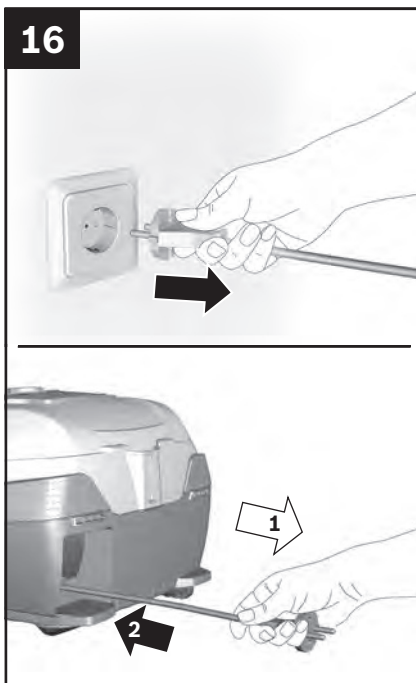
Carrying the appliance

Fig. 15

To overcome obstacles, e.g. steps, the appliance can also be carried by the handle on the appliance body.

After using this appliance

16

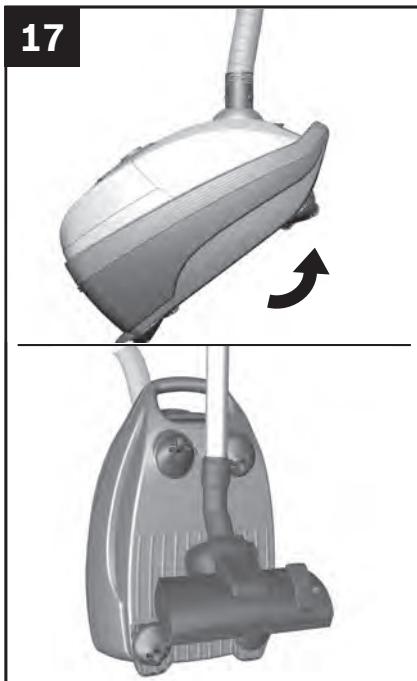


Disconnecting the appliance

Fig. 16

- Pull out the mains plug.
- Briefly pull on the power cord and release it (the cable retracts automatically).

17



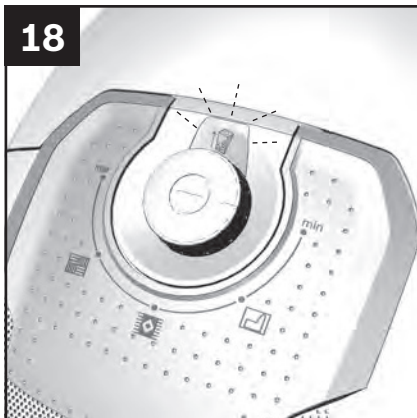
Storing and transporting

Fig. 17

- To store or transport the appliance, you can use the storage aid on the underside of the appliance.
- Stand the appliance upright on its end. Slide the hook on the floor nozzle into the recess on the underside of the appliance.

! Caution: Always switch off the appliance before changing the filter.

18



Replacing the dust bag

Fig. 18

- If the dust bag change indicator lights up continuously when the nozzle is lifted from the floor and the highest power setting has been selected, the dust bag must be changed, even though it may not yet be full. In this case, it needs to be changed due to the type of dust which has been vacuumed.
- The nozzle, suction pipe and flexible hose must not be blocked, even if this does not trigger the dust bag change indicator.

Changing the filter



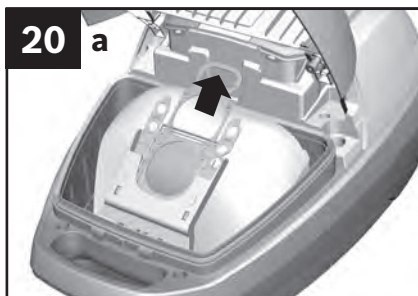
Opening the lid

Fig. 19

- Open the lid by moving the locking lever in the direction of the arrow.

Changing the dust bag

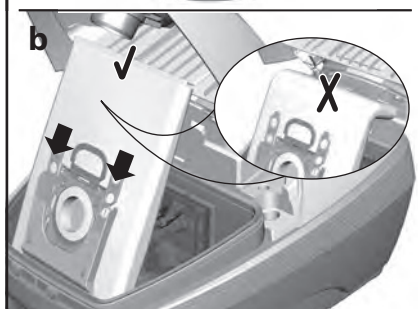
Fig. 20



- a) Close the dust bag by pulling on the locking tab, and remove the bag.

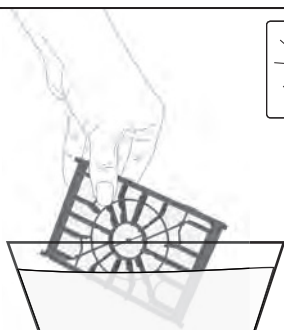


- b) Push the new dust bag into the holder until it clicks into place. When doing so, leave the dust bag folded as it was when removed from the packaging. Do not crease or kink the dust bag, and ensure that it is not pinched when the lid is closed.



- ! Caution: The lid will only close**
• if a dust bag has been inserted.

21



Motor protection filter

! Caution: The vacuum must not be operated without the motor protection filter.

Cleaning the motor protection filter

The motor protection filter should be cleaned regularly by tapping out the dirt and rinsing.

Fig. 21

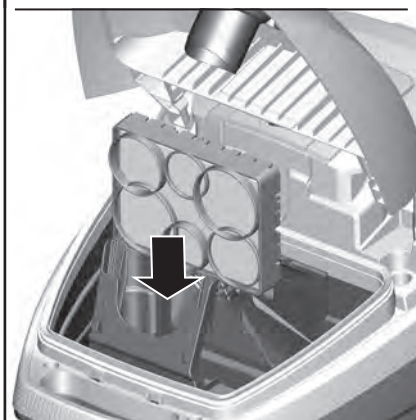
- Open the dust bag compartment lid. **Fig. 19**
- Release the motor protection filter by pulling on the side tabs and pull it out in the direction of the arrow.
- Disconnect the motor protection filter from the Bionic filter.
- Clean the motor protection filter by tapping out the dirt.
- If it is very dirty, the motor protection filter should be rinsed. The filter must then be left to dry for at least 24 hours.
- ! Please note:** the Bionic filter must not come into contact with water, as this will adversely affect the correct operation of the filter.

Changing the filter

21

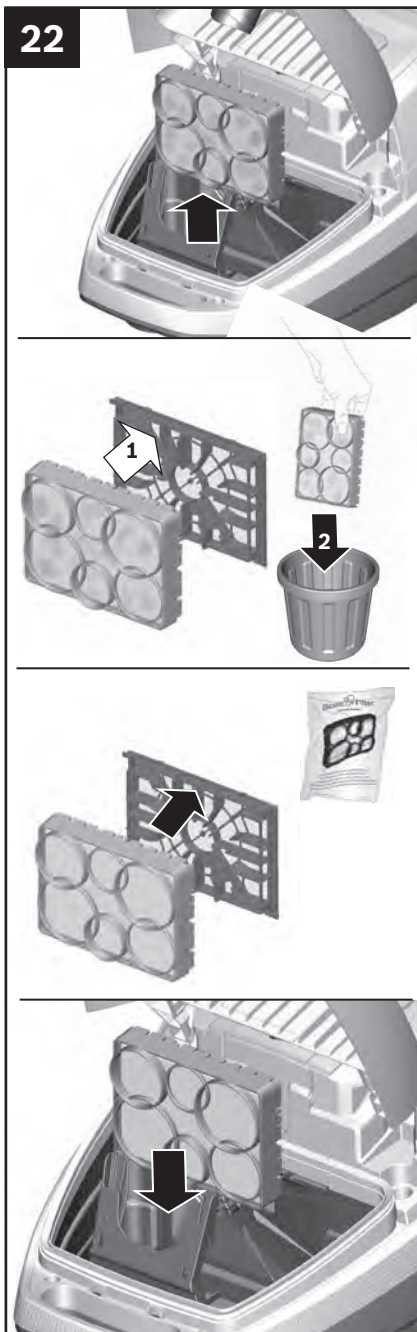


- After cleaning, place the Bionic filter onto the motor protection filter as necessary and push both filters into the appliance.



- Close the dust bag compartment lid.

22



Replacing the Bionic filter

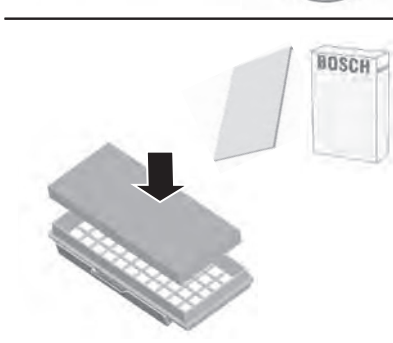
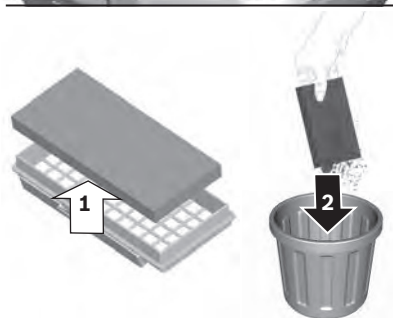
If your appliance is equipped with a Bionic filter, it should be replaced once it begins to lose its effect (after approx. 1 year).

Fig. 22

- Open the dust bag compartment lid. **Fig. 19**
- Remove the motor protection filter together with the Bionic filter from the appliance.
- Remove the old Bionic filter from the motor protection filter and dispose of it.
- Place the Bionic filter onto the motor protection filter.
- Push the filters into the appliance and close the dust bag compartment lid.
- The motor protection filter must also be inserted into the appliance if you no longer wish to use the Bionic filter

! Caution: The vacuum cleaner must not be operated without the motor protection filter.

23



Exhaust filter

The exhaust filter must be cleaned or replaced at least once a year.

Replacing the micro-hygiene exhaust filter

Fig. 23

- Open the rear flap.
- Unlock the filter holder by moving the locking tab in the direction of the arrow.
- Remove the foam filter* from the filter holder and tap it out. Replace the old micro-hygiene filter with a new one. (This is included in the filter pack when you purchase original dust bags).
- Insert the filter holder into the appliance and lock it in place.

Cleaning the EPA exhaust filter

The EPA filter is designed so that it does not need to be replaced, provided the appliance is used as intended in the household.

To ensure that the vacuum cleaner is working at its optimum power level, the EPA filter should be rinsed out after one year. The filtering action of the filter remains intact, even if the filter surface becomes discoloured.

24

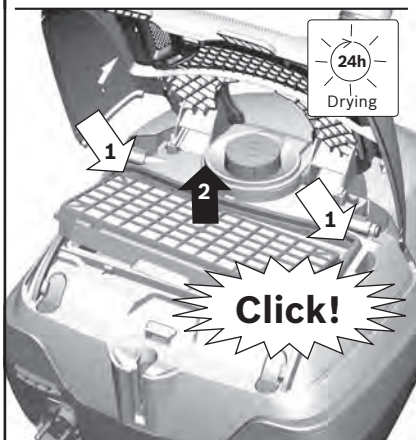


Fig. 24

- Open the rear flap.
 - Unlock the EPA filter by moving the locking tab in the direction of the arrow, and remove it from the appliance.
 - Tap out the filter unit and rinse it under running water.
Alternatively, the unit can be cleaned in a washing machine at max. 30 °C using a gentle programme and the lowest spin speed.
- TIP:** To protect other laundry items, put the filter unit into a laundry bag.
- Once the EPA filter has dried completely (at least 24 hours), insert it back into the appliance and lock it in place.
 - Close the rear flap.

After vacuuming fine dust particles (e.g. gypsum, cement, etc.), clean the motor protection filter by tapping it out or, if necessary, replace the motor protection filter and exhaust filter.

Always switch off the vacuum cleaner and disconnect the power cord from the mains before cleaning the vacuum cleaner. The vacuum cleaner and plastic accessories can be cleaned with an ordinary plastic cleaner.

! Do not use abrasive materials, glass-cleaning agents or all-purpose cleaning products. Never immerse the vacuum cleaner in water.

The dust compartment can, if necessary, be cleaned with a second vacuum cleaner or simply wiped with a dry cloth or dusting brush.

Subject to technical modifications.

Disposal



"This appliance is labelled in accordance with European Directive 2012/19/EU concerning used electrical and electronic appliances (waste electrical and electronic equipment - WEEE). The guideline determines the framework for the return and recycling of used appliances as applicable throughout the EU."

Disposal information

■ Packaging

The packaging is designed to protect the vacuum cleaner from being damaged during transportation. It is made of environmentally friendly materials and can therefore be recycled.

Dispose of packaging that is no longer required at an appropriate recycling point.

■ Old appliances

Old appliances still contain many valuable materials. Therefore, please take appliances that have reached the end of their service to your retailer or recycling centre so that they can be recycled. For current disposal methods, please enquire at a retailer or your local council.

■ Disposal of filters and dust bags

Filters and dust bags are manufactured from environmentally friendly materials. Provided they do not contain substances that are not permitted in household waste, you can dispose of them with your normal household waste.

Customer service

GB Great Britain
BSH Home Appliances Ltd.
Grand Union House
Old Wolverton Road
Wolverton
Milton Keynes MK12 5PT

To arrange an engineer visit, to order spare parts and accessories or for product advice please visit:

www.bosch-home.co.uk

or call

Tel.: 0344 892 8979*

*Calls are charged at the basic rate, please check with your telephone service provider for exact charges.

Conditions of guarantee

For this appliance the guarantee conditions as set out by our representatives in the country of sale apply. Details regarding same may be obtained from the dealer from whom the appliance was purchased. For claims under guarantee the sales receipt must be produced.





8001061463

970418