



Register your new Bosch now:  
[www.bosch-home.com/welcome](http://www.bosch-home.com/welcome)



**Food Processor** MCM6...AU



**BOSCH**

en Operating instructions

*Congratulations on the purchase of your new BOSCH appliance.*

*In doing so, you have opted for a modern, high-quality domestic appliance.*

*You can find further information about our products on our web page.*

## Contents

For your safety .....	2
Overview .....	4
Operation .....	5
Recommended applications .....	10
Cleaning and servicing .....	10
Storage .....	11
Troubleshooting .....	11
Extra accessories .....	12
Instructions on disposal .....	12
Warranty conditions .....	12

## For your safety

**Before use, read these instructions carefully in order to become familiar with important safety and operating instructions for this appliance.**

If the instructions for correct use of the appliance are not observed, the manufacturer's liability for any resulting damage will be excluded.

This appliance is designed for processing normal household quantities in the home or similar quantities in non-industrial applications.

Non-industrial applications include e.g. use in employee kitchens in shops, offices, agricultural and other commercial businesses, as well as use by guests in boarding houses, small hotels and similar dwellings. Use the appliance for processing normal amounts of food for the household.

This appliance is suitable for mixing, kneading, beating, slicing and shredding food. Other applications are possible if the accessories approved by the manufacturer are used. It must not be used for processing other objects or substances.

Use the appliance with original accessories only.

Please keep the Operating instructions in a safe place.

If passing on the appliance to a third party, always include the Operating instructions.

## General safety instructions

### Electric shock risk

The appliance must not be used by children.

The appliance and its power cord must be kept away from children.

Appliances can be used by persons with reduced physical, sensory or mental capabilities or lack of experience and knowledge if they have been given supervision or instruction concerning use of the appliance in a safe way and if they understand the hazards involved.

Children shall not play with the appliance.

Connect and operate the appliance only in accordance with the specifications on the rating plate. Do not use outdoors. Do not use the appliance if the power cord and/or appliance are damaged.

Switch off the appliance and disconnect from supply before changing accessories or approaching parts that move in use.

Always disconnect the appliance from the supply if it is left unattended and before assembling, disassembling or cleaning.

Do not place the power cord over sharp edges or hot surfaces.

To prevent injury, a damaged power cord must be replaced by the manufacturer or his customer service or a similarly qualified person. Only our customer service may repair the appliance.

---

## **Safety instructions for this appliance**

---

### **Risk of injury**

#### **Electric shock risk**

If the power is interrupted, the appliance remains switched on and restarts when the power is restored.

Change accessories and tools only when the appliance is at a standstill (rotary switch on **0/off**) and the mains plug has been pulled out.

Never immerse the base unit in liquids or place under running water and do not clean in the dishwasher.

Before rectifying a fault, pull out the mains plug.

#### **Risk of injury from the rotating tools!**

While the appliance is operating, never place fingers in the mixing bowl. Always use the pusher for adding ingredients. After switching off, the drive continues running for a short time. Change tools only when the drive is at a standstill.

#### **Risk of injury from sharp blades!**

Grip the universal blade by the edge of the plastic handle only.

When not in use, always store the universal blade in the blade guard.

Do not put fingers in the feed tube. Only use the pusher when adding more ingredients.

Do not grip the sharp blades or edges of the cutting discs.

Take hold of cutting discs by the edge only.

#### **Risk of injury from sharp blades/rotating drive!**

Never place fingers in the attached blender! Do not remove/attach the blender until the drive is at a standstill. Do not touch blender blades with bare hands. Clean them with a brush.

#### **Risk of scalding!**

If processing hot liquids, steam escapes through the funnel in the lid.

Add a max. 0.4 litres of hot or frothing liquid.

## Explanation of the symbols on the appliance or accessory



Follow the instructions in the operating instructions.



Caution! Rotating blades.



Caution! Rotating tools.  
Do not place fingers in the feed tube.

These operating instructions refer to various models. An overview of the different models can be found on the illustrated pages (Fig. **IV**)

### Overview

Please fold out the illustrated pages.



Fig. **IV**

#### Base unit

##### 1 Rotary switch

0/off = Stop

**M** = Instantaneous switching at maximum speed, hold switch for required blending duration.

**min/max** = Operating speed steplessly adjustable from low to high speed.

**Pulse** = Switch position for intermittent operation at maximum speed. Recommended for making e.g. milk-shakes in the blender.

##### 2 Operating indicator

Lights up while the appliance is operating.

Flashes if the appliance has been operated incorrectly, the electronic fuse has tripped or the appliance is defective – see section “Troubleshooting”.

##### 3 Drive

##### 4 Cord store

#### Bowl with accessories

##### 5 Bowl

##### 6 Lid

##### 7 a) Pusher

##### b) Pusher insert

#### Tools

##### 8 Drive shaft

##### 9 Tool holder

##### 10 Universal blade with blade guard

##### 11 Kneading hook

##### 12 Stirrer

##### 13 Disc holder

##### 14 Reversible slicing disc – thick/thin

##### 15 Reversible shredding disc – coarse/fine

##### 16 Chipper disc \*

##### 17 Asian vegetable disc \*

##### 18 Citrus press \*

a) Strainer basket

b) Pressing cone

##### 19 Dicer with drive shaft \*

a) Drive shaft

b) Base holder

c) Catch

d) Blade insert

e) Slicing disc

f) Blade cover

g) Cutting grid cleaner

##### 20 Universal cutter \*

a) Jug with drive

b) Lid

##### 21 Blender

a) Blender jug with drive

b) Lid

c) Refill opening

d) Funnel

##### 22 Accessories bag \*

\* Not all models.

## Operation

Before operating the appliance and accessories for the first time, clean thoroughly; see "Cleaning and servicing".



### Warning!

*Use only the rotary switch (1) to switch the appliance on or off.  
Switching off the appliance by opening the lid (6, 20b, 21b) will damage the appliance.*



### Important!

*Bowl (5), lid/jug of the universal cutter (20) and blender jug (21a) are not suitable for use in the microwave!*

## Preparation

- Place the base unit on a smooth, clean surface.
- Pull cord out of the cord store to the required length.

## Bowl with accessories/tools



### Risk of injury from the rotating tools!

*While the appliance is operating, never place fingers in the mixing bowl.  
Always use the pusher (7) for adding ingredients. After switching off, the drive continues running for a short time. Change tools only when the drive is at a standstill.*



### Warning!

*When working with the bowl, the appliance cannot be switched on until the bowl has been attached and the lid has been attached and screwed on tight.*

## Universal blade (10)

for cutting and chopping.



### Risk of injury from sharp blades!

*Grip the universal blade by the edge of the plastic handle only.  
When not in use, always store the universal blade in the blade guard.*

## Kneading hook (11)

for stirring and kneading dough and for mixing in ingredients which are not to be cut.



## Stirrer (12)

for cream, beaten egg white and light dough. Not suitable for solid ingredients.



Before using, fit stirrer.

- Insert stirrer into drive housing and lock into position (Fig. B-5b).

### Fig. B

- Attach the bowl (arrow on bowl on dot on the appliance) and rotate as far as possible in a clockwise direction.
- Inserting universal blade/kneading hook:
  - Press the drive shaft into the tool holder until it locks into position.
  - Insert tool holder into the bowl.
  - Place universal blade/kneading hook into the tool holder and let go.
- Inserting stirrer:
  - Insert drive shaft into the bowl.
  - Attach stirrer with a slight rotation to the drive shaft.



### Warning!

*Add ingredients to be processed always after the tool has been inserted.*

- Add ingredients.
- Attach lid (match arrow on lid on dot on bowl) and rotate in a clockwise direction. Lid lug must be located fully in the slot in the bowl handle.
- Insert pusher and pusher insert.
- Insert the mains plug.
- Set the rotary switch to the desired setting.
- To add more ingredients, set the rotary switch to **0/off**.
- Remove the pusher and add ingredients through the feed tube.
- Add liquids through the pusher. Pusher insert can be used as a measuring jug.

## Cutting discs



### ***Risk of injury from sharp blades!***

*Do not grip the sharp blades or edges of the cutting discs. Take hold of cutting discs by the edge only.*

### **Reversible slicing disc – thick/thin (14)**

for slicing fruit and vegetables.

Designation on the reversible slicing disc:

“1” for the thick slicing side

“3” for the thin slicing side

#### ***Warning!***

*The reversible slicing disc is not suitable for slicing hard cheese, bread, rolls or chocolate. Slice boiled, waxy potatoes only when they are cold.*

### **Reversible shredding disc – coarse/fine (15)**

for shredding vegetables, fruit and cheese, except for hard cheese (e.g. Parmesan).

Designation on the reversible shredding disc:

“2” for the coarse shredding side

“4” for the fine shredding side

#### ***Warning!***

*The reversible shredding disc is not suitable for shredding nuts. Shred soft cheese with the coarse side only.*

### **Chipper disc (16)**

For slicing raw potatoes for chips.

### **Asian vegetable disc (17)**

Slices fruit and vegetables into fine strips for Asian vegetable dishes.

#### **Note:**

Attach chipper disc or Asian vegetable disc with the blade face up.

Discs suitable for further purposes are available from dealers (see the chapter “Optional accessories”).

#### **Fig. 9**

- Attach the bowl (arrow on bowl on dot on the appliance) and rotate as far as possible in a clockwise direction.
- Insert drive shaft into the bowl.
- Take disc out of the protective cover.
- Place disc on disc holder.  
Turn required slicing/shredding side face up. Place disc onto the disc holder such that the drive couplings on the disc holder grip into the disc openings. Disc must **rest** on the lateral lug of the disc holder.



- Lightly rotating, attach disc holder to the drive shaft.



### ***Risk of injury from sharp blades!***

*Do not place fingers in the feed tube. Only use the pusher when pushing down ingredients.*

- Attach lid (match arrow on lid on dot on bowl) and rotate in a clockwise direction.  
Lid lug must be located fully in the slot in the bowl handle.
- Insert pusher and pusher insert.
- Insert the mains plug.
- Set the rotary switch to the desired setting.
- Fill with contents which are to be sliced or shredded. When adding contents which are to be sliced or shredded, apply only light pressure to the pusher.
- Remove the pusher and add ingredients through the feed tube.
- Add long and thin sliced contents by using the pusher. To do this, remove pusher insert.

#### ***Warning!***

*Empty the bowl before it becomes so full that the sliced or shredded contents reach the disc holder.*

#### **Instructions for cutting chocolate:**

Add chocolate **before switching on** the appliance and cover with the pusher.

After switching on the appliance, push down with the pusher.

#### **After using the appliance**

- Set the rotary switch to **0/off**.
- Remove mains plug.
- Rotate the lid in an anti-clockwise direction and remove.
- Remove tool:
  - Take the tool holder together with universal blade or kneading hook out of the bowl. Remove the tools from the tool holder.  
After cleaning the universal blade, attach the blade guard.
  - Remove stirrer from drive shaft.  
Take drive shaft out of bowl.  
Dismantle stirrer for cleaning (Fig. 10).
  - Lift the disc holder on the recesses from the bowl. Take out discs.  
Take drive shaft out of bowl.

- Rotate the bowl in an anti-clockwise direction and remove.
- Clean all parts, see “Cleaning and servicing”.

### Citrus press

for pressing the juice out of citrus fruits, e.g. oranges, grapefruits, lemons.



#### **Warning!**

*The citrus press must be completely assembled before use.*

### Fig. D

- Attach the bowl (arrow on bowl on dot on the appliance) and rotate as far as possible in a clockwise direction.
- Insert drive shaft into the bowl.
- Attach the strainer basket to the drive shaft (arrow on citrus press on dot on the bowl) and rotate in a clockwise direction. The lug on the strainer basket must be located fully in the slot in the bowl handle.
- Attach and press on pressing cone.
- Insert the mains plug.
- To extract juice from the fruits, set the rotary switch to low speed and press the fruit onto the pressing cone.

#### **Warning!**

*Check the level. Maximum processing quantity: 1000 ml fruit juice.*

#### **After using the appliance**

- Set the rotary switch to **0/off**.
- Remove mains plug.
- Rotate the citrus press in an anti-clockwise direction and remove.
- Rotate the bowl in an anti-clockwise direction and remove.
- Clean all parts, see “Cleaning and servicing”.

### Dicer

Dicer for cutting food into cube shapes.



#### **Risk of injury from sharp blades/rotating drive!**

*Never place fingers in the attached dicer! Do not remove/attach the dicer until the drive is at a standstill.*

*The dicer will not operate until the lid has been screwed on tight.*

*When disassembling/assembling the dicer, take hold of the slicing disc by the plastic stud in the centre only.*



#### **Warning! Application guidelines!**

*The dicer is suitable only for dicing potatoes (raw or boiled), carrots, cucumbers, tomatoes, peppers, onions, bananas, apples, pears, strawberries, melons, kiwis, eggs, soft pork sausage (e.g. Mortadella), boiled or fried boneless poultry.*

*Very soft cheese (e.g. Mozzarella, Feta) can not be processed.*

*In the case of cheese slices (e.g. Gouda) and hard cheese (e.g. Emmentaler) the quantity processed in one cycle must not exceed 3 kg.*

*Before processing pip and stone fruits (apples, peaches, etc.), remove the pips or stones. Before processing boiled or fried meat, remove the bones.*

*Food must not be frozen.*

*If these guidelines are not observed, the dicer, including the cutting grid and the rotating blade, may be damaged.*

*If the dicer is not used as intended, is modified or is used improperly, Robert Bosch Hausgeräte GmbH cannot assume liability for any resulting damage.*

*Also excluded is the liability for damage (e.g. blunt or deformed blades) which result from the processing of unapproved food.*



#### **Important information**

When working with the dicer, use the drive shaft supplied with the dicer (Fig. E-2).

Select operating speed according to the food to be diced.

#### **Low operating speed („min“):**

boiled potatoes, potatoes, carrots and eggs; cucumbers; bananas; strawberries; melons.

#### **Medium operating speed:**

raw potatoes and carrots; soft sausage (e.g. Mortadella); cheese slices, hard cheese; peppers, tomatoes, onions; apples, kiwifruit.



#### **Warning!**

*When working with the dicer, never use intermittent operation (Pulse).*

#### **Important information:**

- Food must not contain any bones, pips or other solid constituents.
- Food must not be frozen.
- Fruit/vegetables should not be too ripe, as the juice may escape.
- Leave cooked food to cool down before dicing it, as it will then be firmer and the dicing result will be better.
- The length of the cubes can be influenced by increasing or reducing the pressure on the pusher.

#### **Assembling the dicer**

##### **Fig. 1**

- Insert the blade insert into the base holder. Observe recesses!
- Insert the dicing disc into the base holder.
- Press up the 4 catches until they lock into position.

#### **Working with the dicer**

##### **Fig. 2**

- Place drive shaft for the dicer on the drive on the base unit.
- Attach the bowl (arrow on bowl on dot on the appliance) and rotate as far as possible in a clockwise direction.
- Insert the dicer.

The arrow on the dicer and the arrow on the bowl must be in alignment!

Dicer must be positioned fully on the drive shaft! If required, turn the blade insert into the correct position using the blade cover (Fig. 1-6).

- Remove the blade cover.
- Attach lid (match arrow on lid on dot on bowl) and rotate in a clockwise direction. Lid lug must be located fully in the slot in the bowl handle.

- Insert pusher and pusher insert.
- Insert the mains plug.
- Set the rotary switch to the desired setting.
- Place the food to be diced in the feed tube. If required, apply light pressure to the pusher. If required, chop up food beforehand.

#### **Warning!**

*Empty the bowl without delay:*

- after processing 500 g,
- before the cubes have reached the lower edge of the dicer.

#### **After using the appliance**

- Set the rotary switch to **0/off**.
- Remove mains plug.
- Rotate the lid in an anti-clockwise direction and remove.
- Attach the blade cover.
- Take dicer out of the bowl.
- Rotate the bowl in an anti-clockwise direction and remove.
- Remove the drive shaft.
- Remove food remnants from the cutting grid using the cutting grid cleaner.

#### **Blender**

for blending liquid or semi-solid food, for cutting/chopping raw fruit and vegetables, for puréeing food.



#### **Risk of injury from sharp blades/rotating drive!**

*Never place fingers in the attached blender! Blender will not operate until the lid has been screwed on tight. Do not remove the blender until the drive is at a standstill.*



#### **Risk of scalding!**

*If processing hot liquids, steam escapes through the funnel in the lid. Add a max. 0.4 litres of hot or frothing liquid.*

#### **Warning!**

*Blender may be damaged. Do not process deep-frozen ingredients (except ice cubes). Do not operate blender when empty.*



## Blending

### Warning!

To operate the blender, the blender lid must be attached and screwed on tightly.

### Fig. 11

- Attach the blender jug (match arrow on the jug on the dot on the appliance) and rotate as far as possible in a clockwise direction.
- Add ingredients.  
Maximum capacity, liquid = 1.5 litres (frothing or hot liquids max. 0.4 litres).  
Optimal processing capacity, solids = 80 g.
- Attach lid and rotate in a clockwise direction. Lid lug must be located fully in the slot in the blender handle.
- Set the rotary switch to the desired setting.
- To add more ingredients, set the rotary switch to **0/off**.
- Remove the lid and add ingredients or
- remove the funnel and gradually add solid ingredients through the refill opening or
- pour liquid ingredients through the funnel.

### After blending

- Set the rotary switch to **0/off**.
- Remove mains plug.
- Rotate the blender in an anti-clockwise direction and remove.
- Rotate the lid in an anti-clockwise direction and remove.

**Tip:** It is recommended to clean the blender immediately after use, see "Cleaning and servicing".

## Universal cutter

for cutting smaller quantities of meat, hard cheese, onions, parsley, garlic, fruit and vegetables.

It is not permitted to cut coffee beans, pepper corns, sugar, poppy seeds and horseradish.



### **Risk of injury from sharp blades/rotating drive!**

*Never reach into the jug of the universal cutter! Remove the chopped food using a suitable implement (e.g. spoon).*

*Do not remove universal cutter until the drive is at a standstill.*

*The universal cutter will not work until the lid has been screwed on tightly.*

### Fig. 12

- Attach the jug (match arrow on the jug on the dot on the appliance) and rotate as far as possible in a clockwise direction.
- Add food, which is to be cut, in the jug.
- Attach lid and rotate in a clockwise direction. Lid lug must be located fully in the slot in the jug.
- Turn rotary switch to setting **M** and hold.  
The longer the appliance remains switched on, the finer the ingredients are cut.  
In the case of herbs the required cutting result can be achieved very quickly after switching the appliance on. A brief "tap" on setting **M** may be adequate.

### After using the appliance

- Release rotary switch.
- Remove mains plug.
- Rotate universal cutter in a anti-clockwise direction and remove.
- Turn universal cutter over, the chopped food falls into the lid.
- Rotate jug anti-clockwise and remove.
- Remove the rest of the chopped food from the jug using a suitable implement (e.g. spoon).
- Clean all parts, see "Cleaning and servicing".

## Recommended applications

### Sports drink

270 g honey (from refrigerator, 5 °C)

5 g cinnamon

230 g milk

- Put honey and cinnamon in the blender and blend at setting **M**.
- After 5 seconds add the milk and blend for 3 seconds.

Further recommendations can be found in the enclosed quick start guide.

Detailed recipes for use with your new food processor can also be found at:

[www.bosch-home.com/recipesMCM6](http://www.bosch-home.com/recipesMCM6)



### Important information

All parts of the bowl, including accessories (5–7) and the tools (8–17), except the gears of the stirrer, are dishwasher-proof.

Do not wedge plastic parts in the dishwasher as they could warp.

The stirrer can be taken apart for cleaning.

#### Fig. 19

- Carefully remove whisk from the holder and remove the lid.
- Carefully clean gears with a brush.
- The whisk can be cleaned in the dishwasher.
- Assemble after cleaning.

## Cleaning and servicing

The appliance requires no maintenance!

Thorough cleaning guarantees a long service life.

Further information can be found in the quick reference guide.



### **Risk of electric shock!**

*Never immerse the base unit in liquids or place under running water and do not clean in the dishwasher.*

### **Warning!**

*Do not use abrasive cleaning agents. Surfaces may be damaged.*

### **Tips:**

- If processing e.g. carrots and red cabbage, the plastic parts will become discoloured, by a red film which can be removed with a few drops of cooking oil.
- If required, clean accessories bag. Follow care instructions in the bag.

### Cleaning the base unit

- Remove mains plug.
- Wipe the base unit with a damp cloth. If required, use a little detergent.
- Then dry the base unit.

### Cleaning the bowl and accessories



### **Risk of injury from sharp blades!**

*Grip the universal blade by the edge of the plastic handle only.*

*When not in use, always store the universal blade in the blade guard.*



### **Risk of injury from sharp blades!**

*When disassembling/assembling the dicer, take hold of the slicing disc by the plastic stud in the centre only.*

The base holder (19b) is dishwasher-proof.

Do **not** clean any other parts in the dishwasher, the blades will become blunt!

Before cleaning the dicer, disassemble it:

#### Fig. 20

- Press out the 4 catches and remove the slicing disc.
- Take blade insert out of the base holder.
- Remove food remnants from the cutting grid using the cutting grid cleaner.
- Clean base holder in the dishwasher. Prerinse all other parts under running water. Clean parts with a brush.

### Cleaning the blender



### **Risk of injury from sharp blades!**

*Do not touch blender blades with bare hands. Clean them with a brush.*

It is recommended to clean the blender immediately after use.

This will prevent residue from drying on and attacking the plastic (e.g. by essential oils in herbs).

The blender jug, lid and funnel are dishwasher-proof.

Do not clean blade insert in the dishwasher, but under running water. Do not leave in water!

**Tip:** Pour a little water and washing-up liquid into the attached blender. Switch on at setting **M** for several seconds. Pour out the water and rinse the blender with clean water.

### Taking the blender apart

#### Fig. 1

- Upon the wings, rotate the blade insert in an anti-clockwise direction. The blade insert is released.
- Take blade insert out and remove sealing ring.

### Putting the blender together

- Apply sealing ring on blade insert.
- Insert blade insert from below into blender jug.
- Firmly screw on the blade insert by the wings in a clockwise direction. Rotate the blade insert at least until a wing covers the mark on the blender jug (position → Fig. 1-6).

### Cleaning the universal cutter



#### **Risk of injury from sharp blades!**

*Do not touch universal cutter blade with bare hands. Clean them with a brush.*

It is recommended to clean the universal cutter immediately after use. This will prevent residue from drying on and attacking the plastic (e.g. by essential oils in herbs).

The lid is dishwasher-proof.

Do not clean jug and drive in the dishwasher, but under running water using a brush. Do not leave in water!

To dry, place the jug and drive face up.

## Storage



#### **Risk of injury!**

*When the appliance is not in use, pull out the mains plug.*

#### Fig. 1

- Store tools and cutting discs in the accessories bag. Always store the universal blade with the blade guard attached.
- Stow the cable by pushing it carefully into the cord store.

## Troubleshooting



#### **Risk of injury!**

*Before rectifying a fault, pull out the mains plug.*



#### **Important information**

The Operating indicator flashes if the appliance has been operated incorrectly or the electronic fuse has tripped or the appliance is defective.

### Base unit

#### **Fault:**

Appliance does not work.

#### **Possible cause:**

The appliance was overloaded (e.g. tool jammed by food) and the electronic fuse has tripped.

#### **Remedial action:**

- Set the rotary switch to **0/off**.
- Remove mains plug.
- Eliminate the cause of the overload.
- Switch the appliance on again.

#### **Possible cause:**

An attempt was made to attach the bowl or blender to the appliance while switched on.

#### **Remedial action:**

- Set the rotary switch to **0/off**.
- Attach the bowl or blender.
- Switch the appliance on again.

## Bowl/lid/accessories

### Fault:

Appliance does not start.

### Possible cause:

Parts not correctly attached.

### Remedial action:

- Set the rotary switch to **0/off**.
- Attach parts according to the appropriate instructions in this manual.



### Important information

If the fault cannot be eliminated, please contact customer service (see customer service addresses at the end of this booklet).

## Extra accessories

(available from a specialist outlet if not included with the appliance)

### Chipper disc (MUZ45PS1)

For slicing raw potatoes for chips.

### Asiatic vegetables disc (MUZ45AG1)

Slices fruit and vegetables into fine strips for Asian vegetable dishes.

### Grating disc coarse (MUZ45RS1)

For grating raw potatoes, e.g. for potato pancakes or dumplings.

### Potato fritter disc (MUZ45KP1)

For grating raw potatoes for rostis and potato fritters, for cutting fruit and vegetables into thick slices.

## Instructions on disposal



This appliance has been identified in accordance with the European directive 2012/19/EC on Waste Electrical and Electronic Equipment – WEEE.

The Directive paves the way for effective EU-wide withdrawal and utilization of waste appliances.

Please ask your dealer or inquire at your local authority about current means of disposal.

## Warranty conditions

The guarantee conditions for this appliance are as defined by our representative in the country in which it is sold. Details regarding these conditions can be obtained from the dealer from whom the appliance was purchased. The bill of sale or receipt must be produced when making any claim under the terms of this guarantee.

Subject to alterations.

## Kundendienst – Customer Service

### **DE Deutschland, Germany**

BSH Hausgeräte Service GmbH  
Zentralwerkstatt für kleine  
Hausgeräte  
Trautskirchener Strasse 6-8  
90431 Nürnberg  
Online Auftragsstatus, Filterbeutel-  
Konfigurator und viele weitere  
Infos unter:  
[www.bosch-home.com](http://www.bosch-home.com)

Reparaturservice, Ersatzteile &  
Zubehör, Produkt-Informationen:  
Tel.: 0911 70 440 040  
<mailto:cp-servicecenter@bshg.com>  
Wir sind an 365 Tagen rund um die Uhr  
erreichbar.

### **AE United Arab Emirates,** الإمارات العربية المتحدة

BSH Home Appliances FZE  
Round About 13,  
Plot Nr MO-0532A  
Jebel Ali Free Zone – Dubai  
Tel.: 04 881 4401  
<mailto:service.uae@bshg.com>  
[www.bosch-home.com/ae](http://www.bosch-home.com/ae)

### **AL Republika e Shqipërisë,** Albania

AERTECH SH.P.K.  
Rruga Qemal Stafa  
Pallati i ri përball Prokuroris së  
Përgjithshme  
Hyrja C Kati 10  
Tirana  
Tel.: 066 206 47 94  
<mailto:g.volina@aertech.al>

### **AT Österreich, Austria**

BSH Hausgeräte  
Gesellschaft mbH  
Werkskundendienst  
für Hausgeräte  
Quellenstrasse 2  
1100 Wien  
Tel.: 0810 550 511\*  
Fax: 01 605 75 51 212  
<mailto:vie-stoerungsannahme@bshg.com>  
Hotline für Espresso-Geräte:  
Tel.: 0810 700 400\*  
[www.bosch-home.at](http://www.bosch-home.at)  
\*innerhalb Österreichs zum Regionaltarif

### **AU Australia**

BSH Home Appliances Pty. Ltd.  
7-9 Arco Lane  
HEATHERTON, Victoria 3202  
Tel.: 1300 368 339  
<mailto:bshau-as@bshg.com>  
[www.bosch-home.com.au](http://www.bosch-home.com.au)

### **BA Bosna i Hercegovina,** Bosnia-Herzegovina

"HIGH" d.o.o.  
Gradačanka 29b  
71000 Sarajevo  
Info-Line: 061 100 905  
Fax: 033 213 513  
<mailto:delicnanda@hotmail.com>

### **BE Belgique, België, Belgium**

BSH Home Appliances S.A.  
Avenue du Laerbeek 74  
Laarbeeklaan 74  
1090 Bruxelles – Brussel  
Tel.: 070 222 141  
Fax: 024 757 291  
<mailto:bru-repairs@bshg.com>  
[www.bosch-home.be](http://www.bosch-home.be)

### **BG Bulgaria**

BSH Domakinski Uredi  
Bulgaria EOOD  
115K Tsarigradsko Chausse Blvd.  
European Trade Center Building,  
5th floor  
1784 Sofia  
Tel.: 02 892 90 47  
Fax: 02 878 79 72  
<mailto:informacia.servis-bg@bshg.com>  
[www.bosch.home.bg](http://www.bosch.home.bg)

### **BH Bahrain, البحرين**

Khalaifat Company  
Manama  
Tel.: 01 7400 553  
<mailto:service@khalaifat.com>

### **BY Belarus, Беларусь**

ООО "БСХ Бытовая техника"  
тел.: 495 737 2961  
<mailto:mok-kdhl@bshg.com>

### **CH Schweiz, Suisse,** Svizzera, Switzerland

BSH Hausgeräte AG  
Werkskundendienst für  
Hausgeräte  
Fahrweidstrasse 80  
8954 Geroldswil  
<mailto:ch-info.hausgeraete@bshg.com>  
Service Tel.: 0848 840 040  
Service Fax: 0848 840 041  
<mailto:ch-reparatur@bshg.com>  
Ersatzteile Tel.: 0848 880 080  
Ersatzteile Fax: 0848 880 081  
<mailto:ch-ersatzteil@bshg.com>  
[www.bosch-home.com](http://www.bosch-home.com)

### **CY Cyprus, Κύπρος**

BSH Ikiakes Syskeves-Service  
39, Arh. Makaariou III Str.  
2407 Egomi/Nikosia (Lefkosia)  
Tel.: 77 77 807  
Fax: 022 658 128  
<mailto:bsh.service.cyprus@cytanet.com.cy>

### **CZ Česká Republika,** Czech Republic

BSH domácí spotřebiče s.r.o.  
Firemní servis domácích  
spotřebičů  
Pekařská 10b  
155 00 Praha 5  
Tel.: 0251 095 546  
Fax: 0251 095 549  
[www.bosch-home.com/cz](http://www.bosch-home.com/cz)

### **DK Danmark, Denmark**

BSH Hvidevarer A/S  
Telegrafvej 4  
2750 Ballerup  
Tel.: 44 89 89 85  
Fax: 44 89 89 86  
<mailto:BSH-Service.dk@BSHG.com>  
[www.bosch-home.dk](http://www.bosch-home.dk)

### **EE Eesti, Estonia**

SIMSON OÜ  
Raua 55  
10152 Tallinn  
Tel.: 0627 8730  
Fax: 0627 8733  
<mailto:teenindus@simson.ee>

### **ES España, Spain**

BSH Electrodomésticos  
España S.A.  
Servicio Oficial del Fabricante  
Parque Empresarial PLAZA,  
C/ Manfredonia, 6  
50197 Zaragoza  
Tel.: 902 245 255  
Fax: 976 578 425  
<mailto:CAU-Bosch@bshg.com>  
[www.bosch-home.es](http://www.bosch-home.es)

### **FI Suomi, Finland**

BSH Kodinkoneet Oy  
Itälähenkatu 18 A, PL 123  
00201 Helsinki  
Tel.: 0207 510 700  
Fax: 0207 510 780  
<mailto:Bosch-Service-FI@bshg.com>  
[www.bosch-home.fi](http://www.bosch-home.fi)  
Lankapuhelimesta 8,28 snt/puhelu  
+ 7 snt/min (alv 23%)  
Matkapuhelimesta 8,28 snt/puhelu  
+ 17 snt/min (alv 23%)

**FR France**

BSH Electroménager S.A.S.  
50 rue Ardoin – BP 47  
93401 SAINT-OUEN cedex  
Service interventions à domicile:  
01 40 10 11 00

Service Consommateurs:  
0 892 698 010 (0,34 € TTC/mn)  
mailto:soa-bosch-conso@bshg.com  
Service Pièces Détachées et  
Accessoires:  
0 892 698 009 (0,34 € TTC/mn)  
www.bosch-home.fr

**GB Great Britain**

BSH Home Appliances Ltd.  
Grand Union House  
Old Wolverton Road  
Wolverton  
Milton Keynes MK12 5PT  
To arrange an engineer visit, to  
order spare parts and accessories  
or for product advice please visit  
www.bosch-home.co.uk  
or call  
Tel.: 0844 892 8979\*

\*Calls from a BT landline will be charged at  
up to 3 pence per minute. A call set-up fee  
of up to 6 pence may apply.

**GR Greece, Ελλάδα**

BSH Ikiakes Siskeves A.B.E.  
Central Branch Service  
17 km E.O. Athinon-Lamias &  
Potamou 20  
14564 Kifisia  
Πανελλήνιο τηλέφωνο: 181 82  
(αστική χρέωση)  
www.bosch-home.gr

**HK Hong Kong, 香港**

BSH Home Appliances Limited  
Unit 1 & 2, 3rd Floor  
North Block, Skyway House  
3 Sham Mong Road  
Tai Kok Tsui, Kowloon  
Hong Kong  
Tel.: 2565 6151  
Fax: 2565 6681  
mailto:bosch.hk.service@bshg.com  
www.bosch-home.cn

**HR Hrvatska, Croatia**

BSH kućni uređaji d.o.o.  
Kneza Branimira 22  
10000 Zagreb  
Tel.: 01 640 36 09  
Fax: 01 640 36 03  
mailto:informacije.servis-hr@  
bshg.com  
www.bosch-home.com/hr

**HU Magyarország, Hungary**

BSH Háztartási Készülék  
Kereskedelmi Kft.  
Háztartási gépek márkaszervize  
Királyhágó tér 8-9  
1126 Budapest  
Hibabejelentés  
Tel.: 01 489 5461  
Fax: 01 201 8786  
mailto:hibabejelentés@bsh.hu  
Alkatrészrendelés  
Tel.: 01 489 5463  
Fax: 01 201 8786  
mailto:alkatrészrendelés@bsh.hu  
www.bosch-home.com/hu

**IE Republic of Ireland**

BSH Home Appliances Ltd.  
Unit F4, Ballymount Drive  
Ballymount Industrial Estate  
Walkinstown  
Dublin 12  
Service Requests,  
Spares and Accessories  
Tel.: 01450 2655  
Fax: 01450 2520  
www.bosch-home.co.uk

**IL Israel, ישראל**

C/S/B Home Appliance Ltd.  
Ulief Building  
2, Hamelacha St.  
Industrial Park North  
71293 Lod  
Tel.: 08 9777 222  
Fax: 08 9777 245  
mailto:csb-serv@zahav.net.il  
www.bosch-home.co.il

**IN India, Bhārat, भारत**

BSH Customer Service Front Office  
Shop No.4, Everest Grande,  
Opp. Shanti Nagar Bus Stop,  
Mahakali Caves Road, Andheri East  
Mumbai 400093

**IS Iceland**

Smith & Norland hf.  
Noatuni 4  
105 Reykjavik  
Tel.: 0520 3000  
Fax: 0520 3011  
www.sminor.is

**IT Italia, Italy**

BSH Elettrodomestici S.p.A.  
Via. M. Nizzoli 1  
20147 Milano (MI)  
Numero verde 800 829 120  
mailto:info@bosch-elettrodomestici.it  
www.bosch-home.com/it

**KZ Kazakhstan, Қазақстан**

IP Turebekov Yerzhan  
Nurmanovich  
Jangeldina str. 15  
Shimkent 160018  
Tel.: 0252 31 00 06  
mailto:evrika\_kz@mail.ru

**LB Lebanon, لبنان**

Teheni, Hana & Co.  
Boulevard Dora 4043 Beyrouth  
P.O. Box 90449  
Jdeideh 1202 2040  
Tel.: 01 255 211  
mailto:Info@Teheni-Hana.com

**LT Lietuva, Lithuania**

Senuku prekybos centras UAB  
Jonavos g. 62  
44192 Kaunas  
Tel.: 0372 12146  
Fax: 0372 12165  
www.senukai.lt

**LU Luxembourg**

BSH électroménagers S.A.  
13-15 ZI Breedeweues  
1259 Senningerberg  
Tel.: 26349 300  
Fax: 26349 315  
mailto:lux-service.electromenager@  
bshg.com  
www.bosch-home.com/lu

**LV Latvija, Latvia**

General Serviss Limited  
Bullu street 70c  
1067 Riga  
Tel.: 07 42 41 37  
mailto:bt@olimpeks.lv

Elkor Serviss  
Brivibas gatve 201  
1039 Riga  
Tel.: 067 0705 20; -36  
Fax: 067 0705 24  
mailto:domoservice@elkor.lv  
www.servisacentrs.lv

**MD Moldova**

S.R.L. "Rialto-Studio"  
ул. Шчысева 98  
2012 Кишинев  
тел./факс: 022 23 81 80  
mailto:bosch-md@mail.ru

**ME Crna Gora, Montenegro**

Elektronika komerc  
Ul. Slobode 17  
84000 Bijelo Polje  
Tel./Fax: 050 432 575  
Mobil: 069 324 812  
mailto:ekobosch.servis@  
t-com.me

**MK Macedonia, Македонија**

GORENEC  
Jane Sandanski 69 lok.3  
1000 Skopje  
Tel.: 022 454 600  
Mobil: 070 697 463  
mailto:gorenece@yahoo.com

**MT Malta**

Oxford House Ltd.  
Notabile Road  
Mriehel BKR 14  
Tel.: 021 442 334  
Fax: 021 488 656  
www.oxfordhouse.com.mt

**MV Raajjeyge Jumhooriyyaa, Maldives**

Intel Investments  
Ma. Maadheli, Majeedhee Magu  
Malé  
Tel.: 0331 0742  
mailto:mohamed.zuhuree@intel.com.mv

**NL Nederland, Netherlands**

BSH Huishoudapparaten B.V.  
Taurusavenue 36  
2132 LS Hoofddorp  
Storingsmelding:  
Tel.: 088 424 4010  
Fax: 088 424 4845  
mailto:bosch-contactcenter@bshg.com

Onderdelenverkoop:  
Tel.: 088 424 4010  
Fax: 088 424 4801  
mailto:bosch-onderdelen@bshg.com  
www.bosch-home.nl

**NO Norge, Norway**

BSH Husholdningsapparater A/S  
Grensesvingen 9  
0661 Oslo  
Tel.: 22 66 06 00  
Fax: 22 66 05 50  
mailto:Bosch-Service-NO@bshg.com  
www.bosch-home.no

**NZ New Zealand**

BSH Home Appliances Ltd.  
Unit F 2, 4 Orbit Drive  
Mairangi Bay  
Auckland 0632  
Tel.: 09 477 0492  
Fax: 09 477 2647  
mailto:bshnz-cs@bshg.com  
www.bosch-home.co.nz

**PL Polska, Poland**

BSH Sprzęt Gospodarstwa  
Domowego sp. z o.o.  
Al. Jerozolimskie 183  
02-222 Warszawa  
Centrala Serwisu  
Tel.: 801 191 534  
Fax: 022 572 7709  
mailto:Serwis.Fabryczny@bshg.com  
www.bosch-home.pl

**PT Portugal**

BSHP Electrodomésticos Lda.  
Rua Alto do Montijo, nº 15  
2790-012 Carnaxide  
Tel.: 707 500 545\*  
Fax: 214 250 701  
mailto:bosch.electrodomesticos.pt@bshg.com  
www.bosch-home.pt

\* (PT 0,10 €/min., Mobile 0,25 €/min)

**RO România, Romania**

BSH Electrocasnice srl.  
Sos. Bucuresti-Ploiesti,  
nr. 19-21, sect.1  
13682 Bucuresti  
Tel.: 021 203 9748  
Fax: 021 203 9733  
mailto:service.romania@bshg.com  
www.bosch-home.ro

**RU Russia, Россия**

ООО "БСХ Бытовая техника"  
Сервис от производителя  
Малая Калужская 19/1  
119071 Москва  
тел.: 495 737 2961  
mailto:mok-kdhl@bshg.com  
www.bosch-home.com

**SA Kingdom Saudi Arabia, المملكة العربية السعودية**

BSH Home Appliances  
Saudi Arabia L.L.C.  
Bin Hamran Commercial Centr.  
6th Floor 603B  
Jeddah 21481  
Tel.: 800 124 1247  
mailto:service.ksa@bshg.com  
www.bosch-home.com/sa

**SE Sverige, Sweden**

BSH Hushållsapparater AB  
Landsvägen 32  
169 29 Solna  
Tel.: 0771 11 22 77 local rate  
mailto:Bosch-Service-SE@bshg.com  
www.bosch-home.se

**SG Singapore, 新加坡**

BSH Home Appliances Pte. Ltd.  
TECHPLACE I and  
Mo Kio Avenue 10  
Block 4012 #01-01  
569628 Singapore  
Tel.: 6751 5000  
Fax: 6751 5005  
mailto:bshsgp.service@bshg.com  
www.bosch-home.com.sg

**SI Slovenija, Slovenia**

BSH Hišni aparati d.o.o.  
Litostrojska 48  
1000 Ljubljana  
Tel.: 01 583 07 01  
Fax: 01 583 08 89  
mailto:informacije.servis@bshg.com  
www.bosch-home.com/si

**SK Slovensko, Slovakia**

BSH domácí spotřebiče s.r.o.  
Organizačná zložka Bratislava  
Galvaniho 17/C  
821 04 Bratislava  
Tel.: 02 44 45 20 41  
mailto:opravy@bshg.com  
www.bosch-home.com/sk

**TR Türkiye, Turkey**

BSH Ev Aletleri Sanayi  
ve Ticaret A.Ş.  
Fatih Sultan Mehmet Mahallesi  
Balkan Caddesi No: 51  
34771 Ümraniye, İstanbul  
Tel.: 0 216 444 6333\*  
Fax: 0 216 528 9188  
mailto:careline.turkey@bshg.com  
www.bosch-home.com/tr  
\*Çağrı merkezini sabit hatlardan aramanın  
bedeli şehir içi ücretlendirme, Cep  
telefonlarından ise kullanılan tarifeye göre  
değişkenlik göstermektedir

**TW Taiwan, 台灣**

Achelis Taiwan Co. Ltd.  
4th floor, No. 112 Sec 1  
Chung Hsiao E Road  
Taipei ROC 100  
Tel.: 02 2321 6222  
mailto:Bosch@achelis.com.tw

**UA Ukraine, Україна**

ТОВ "БСХ Побутова Техніка"  
тел.: 044 490 2095  
mailto:bsh-service.ua@bshg.com  
www.bosch-home.com.ua

**XK Kosovo**

NTP GAMA  
Rruga Mag Prishtine-Ferizaj  
70000 Ferizaj  
Tel.: 0290 321 434  
Tel.: 00377 44 172 309  
mailto:a\_service@  
gama-electronics.com

**XS Srbija, Serbia**

BSH Kućni aparati d.o.o.  
Milutina Milankovića 11<sup>a</sup>  
11070 Novi Beograd  
Tel.: 011 205 23 97  
Fax: 011 205 23 89  
mailto:informacije.servis-sr@  
bshg.com  
www.bosch-home.rs

**ZA South Africa**

BSH Home Appliances (Pty) Ltd.  
15th Road Randjespark  
Private Bag X36, Randjespark  
1685 Midrand – Johannesburg  
Tel.: 086 002 6724  
Fax: 086 617 1780  
mailto:applianceserviceza@  
bshg.com  
www.bosch-home.com/za

**Bosch Home Appliance Group**

P.O. Box 83 01 01

D-81701 Munich

Germany

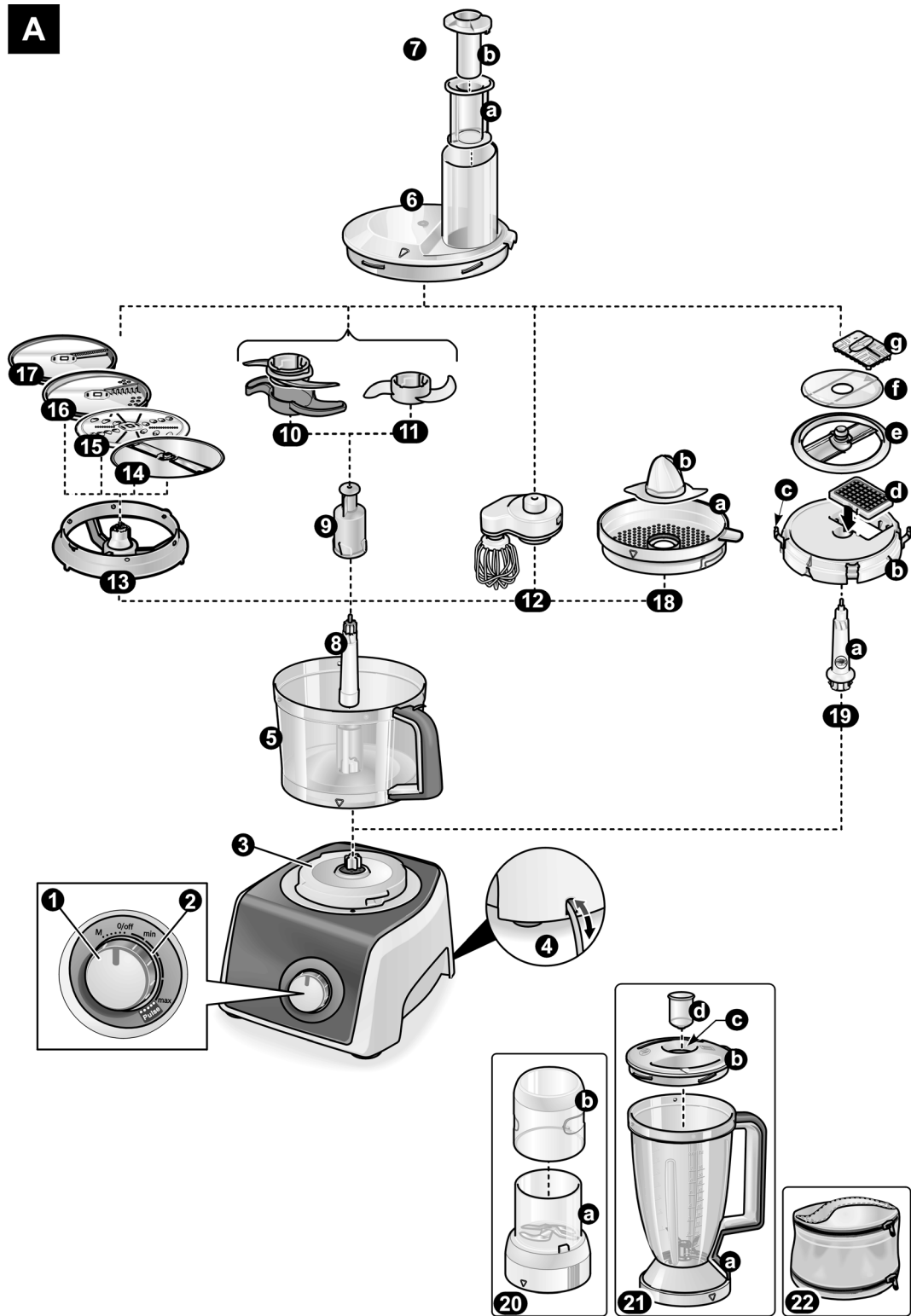
**[www.bosch-home.com](http://www.bosch-home.com)**

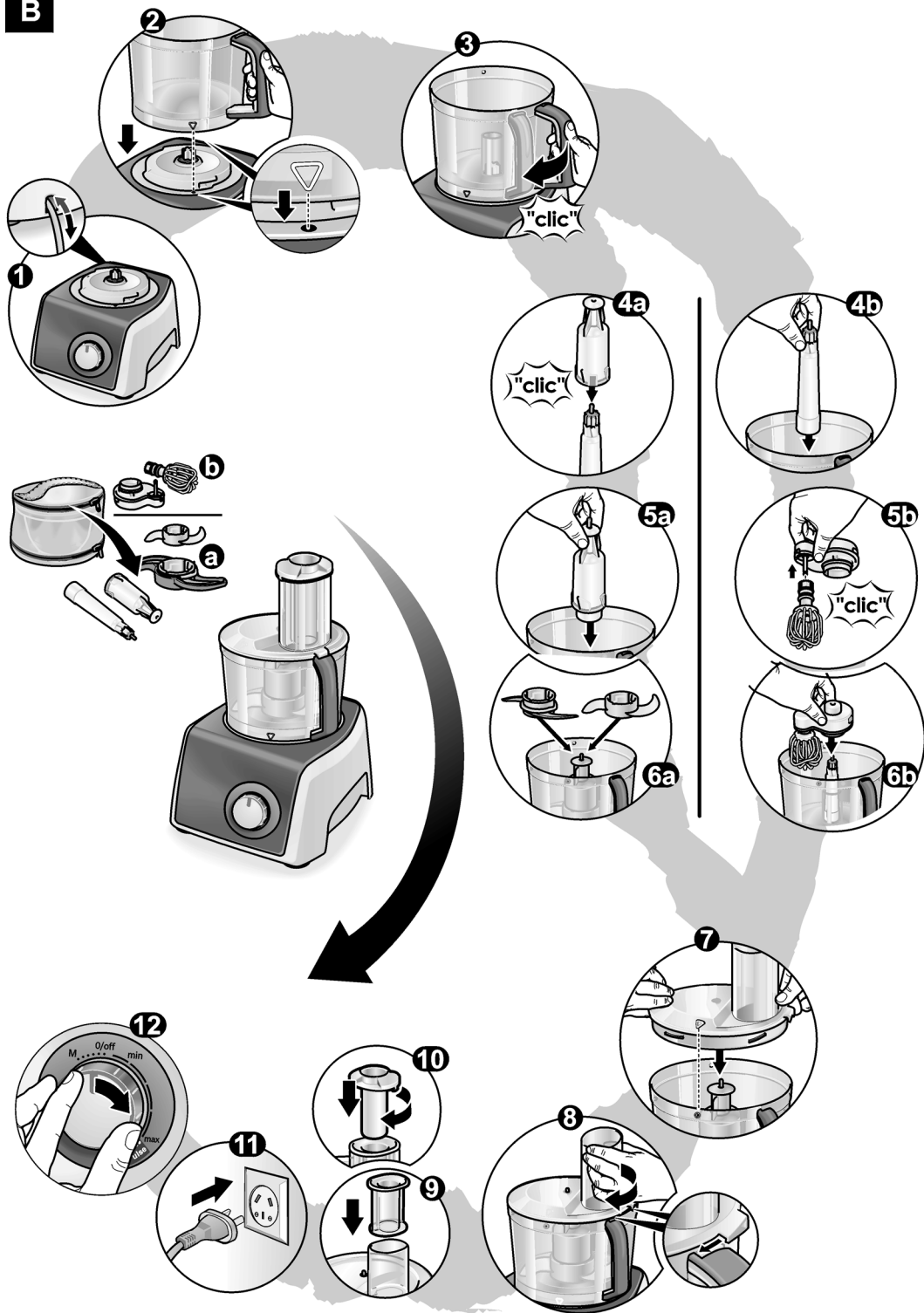


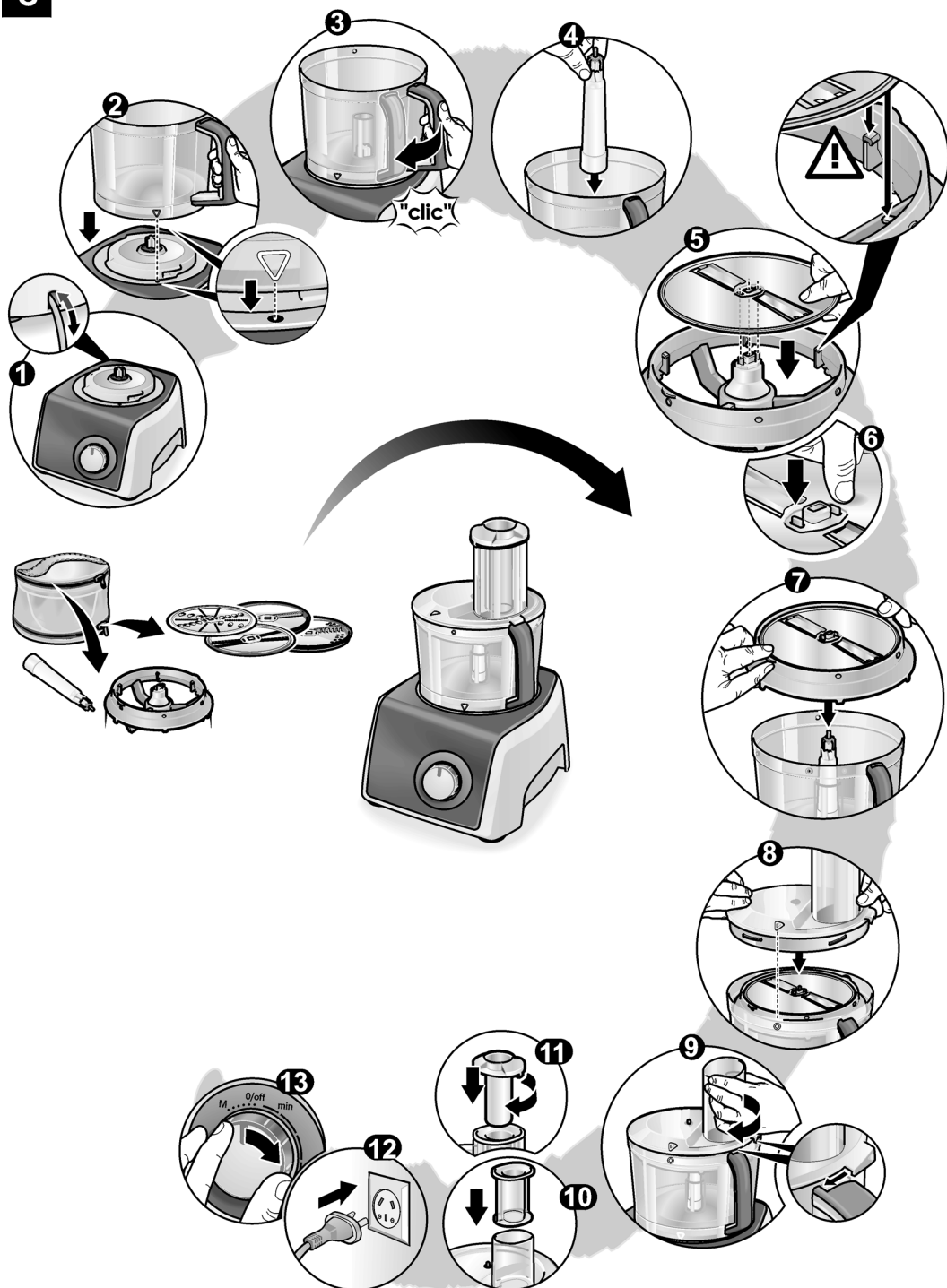
8001001176 (9402)

en

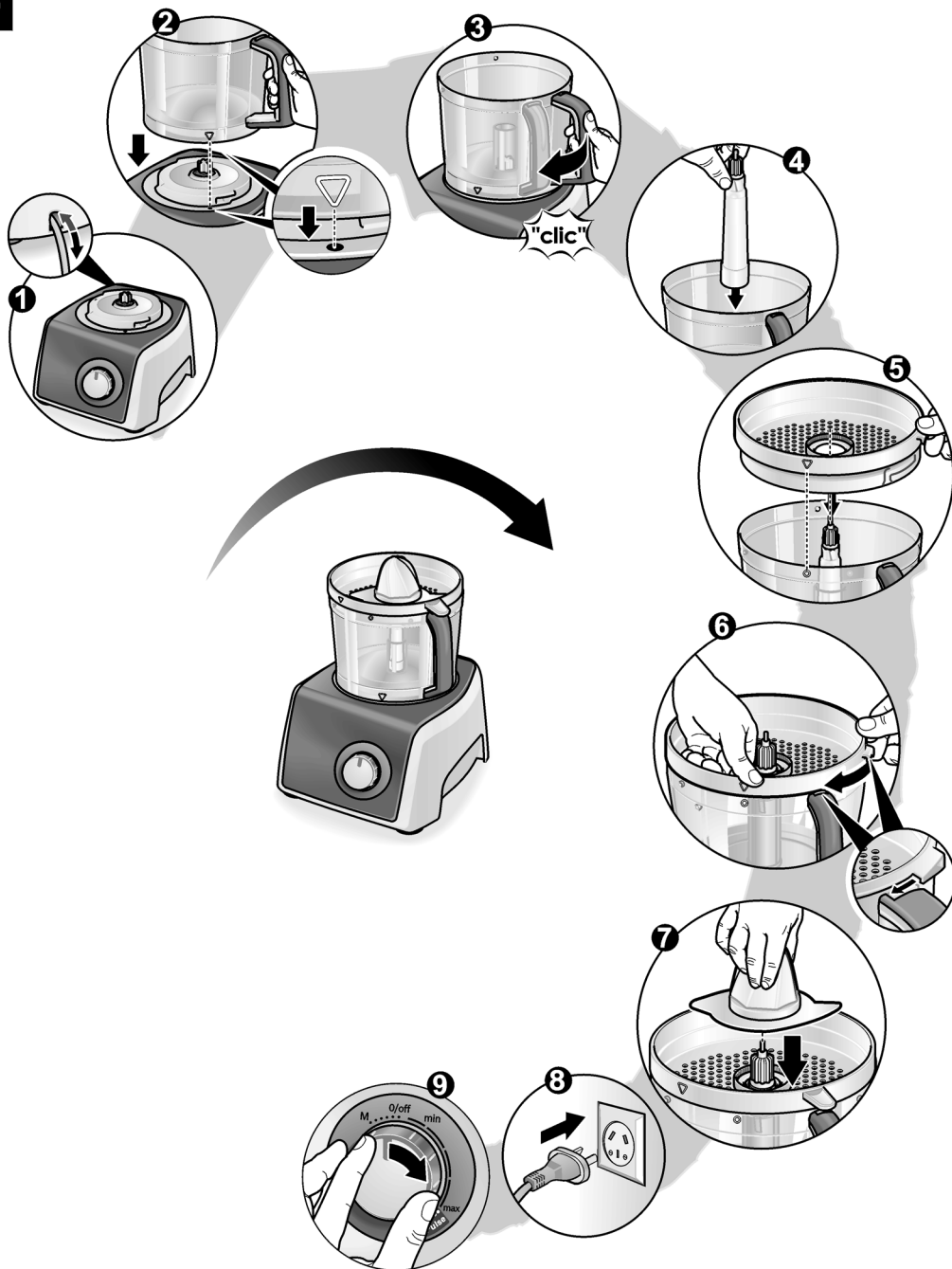


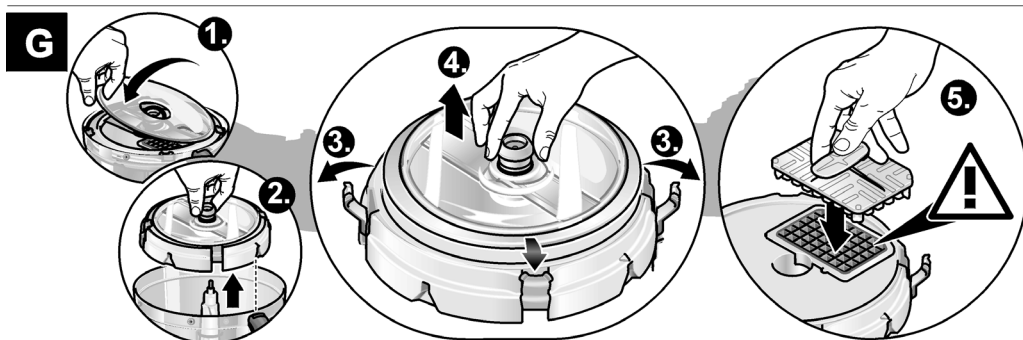
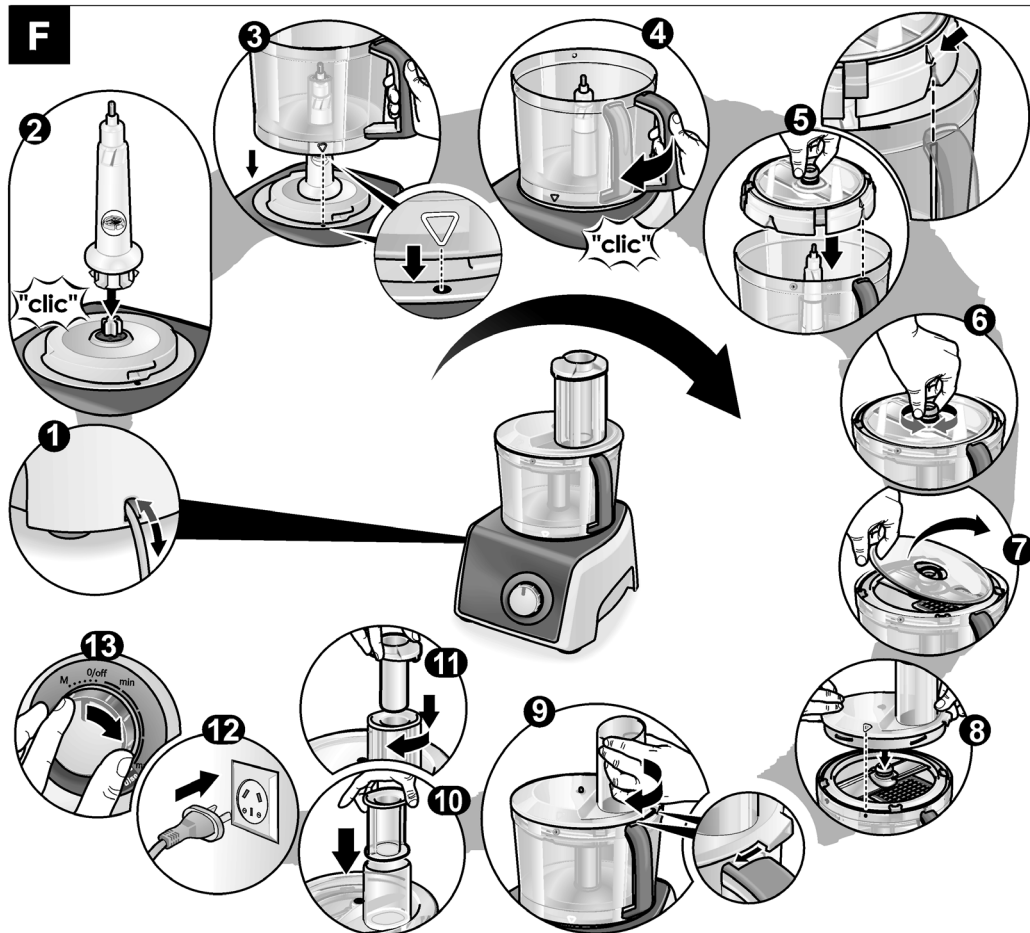
**A**

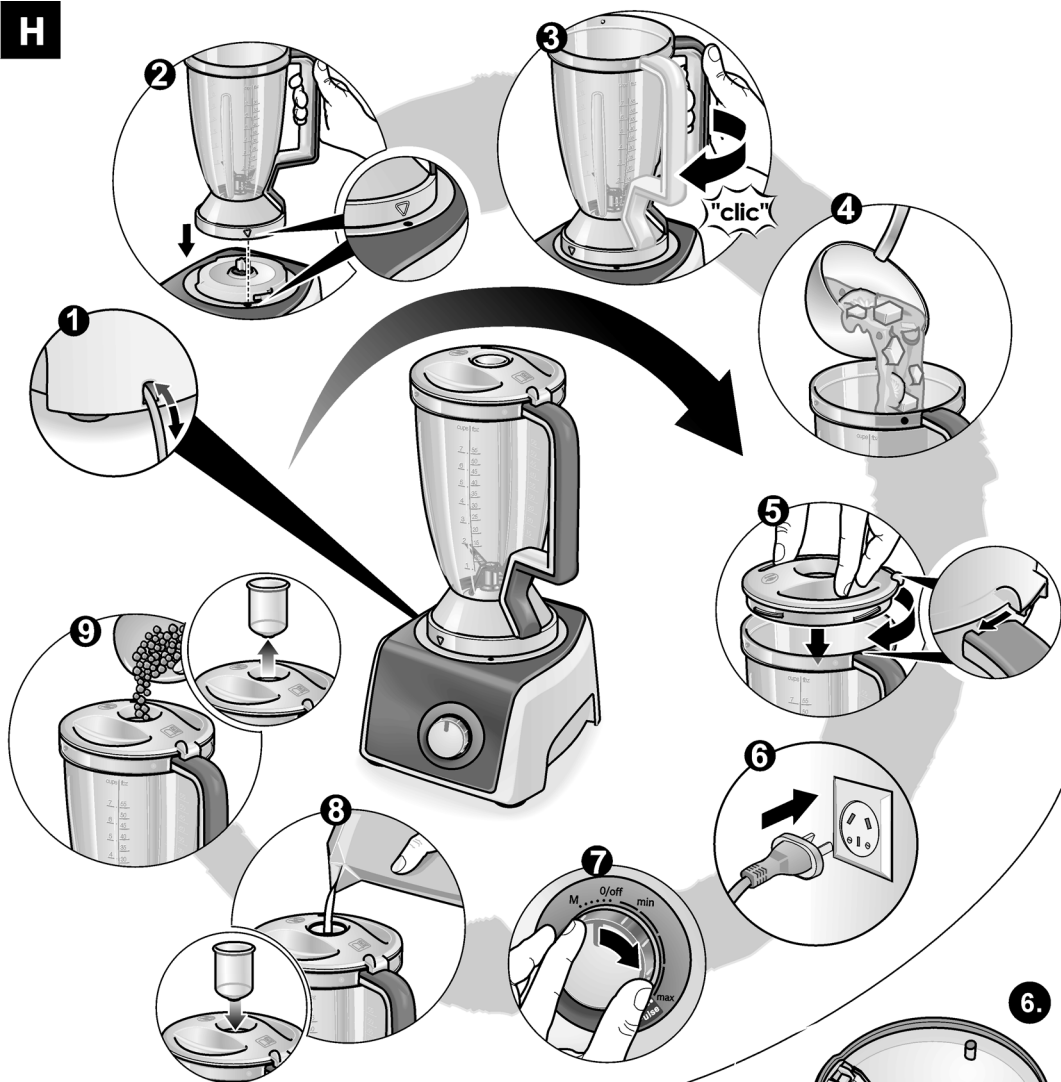
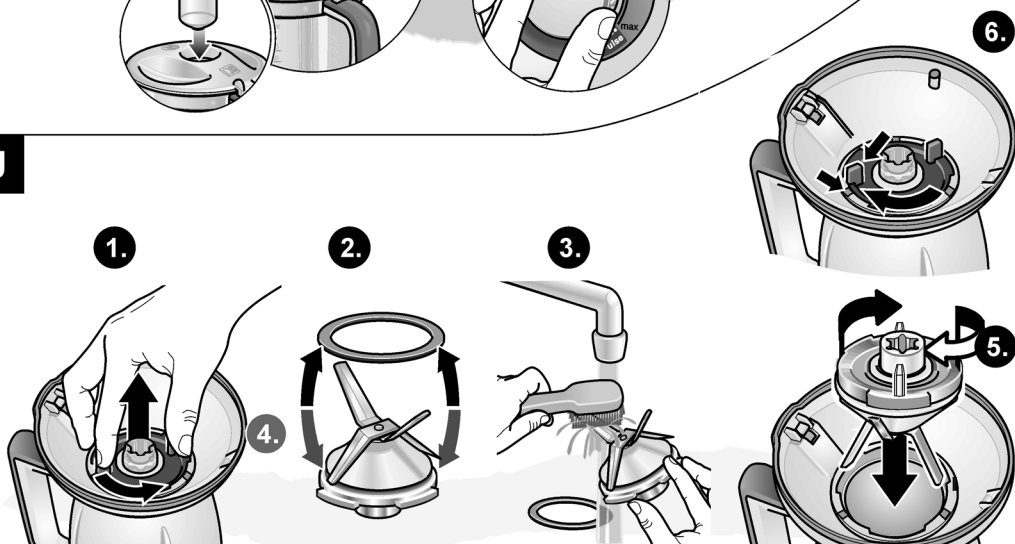
**B**

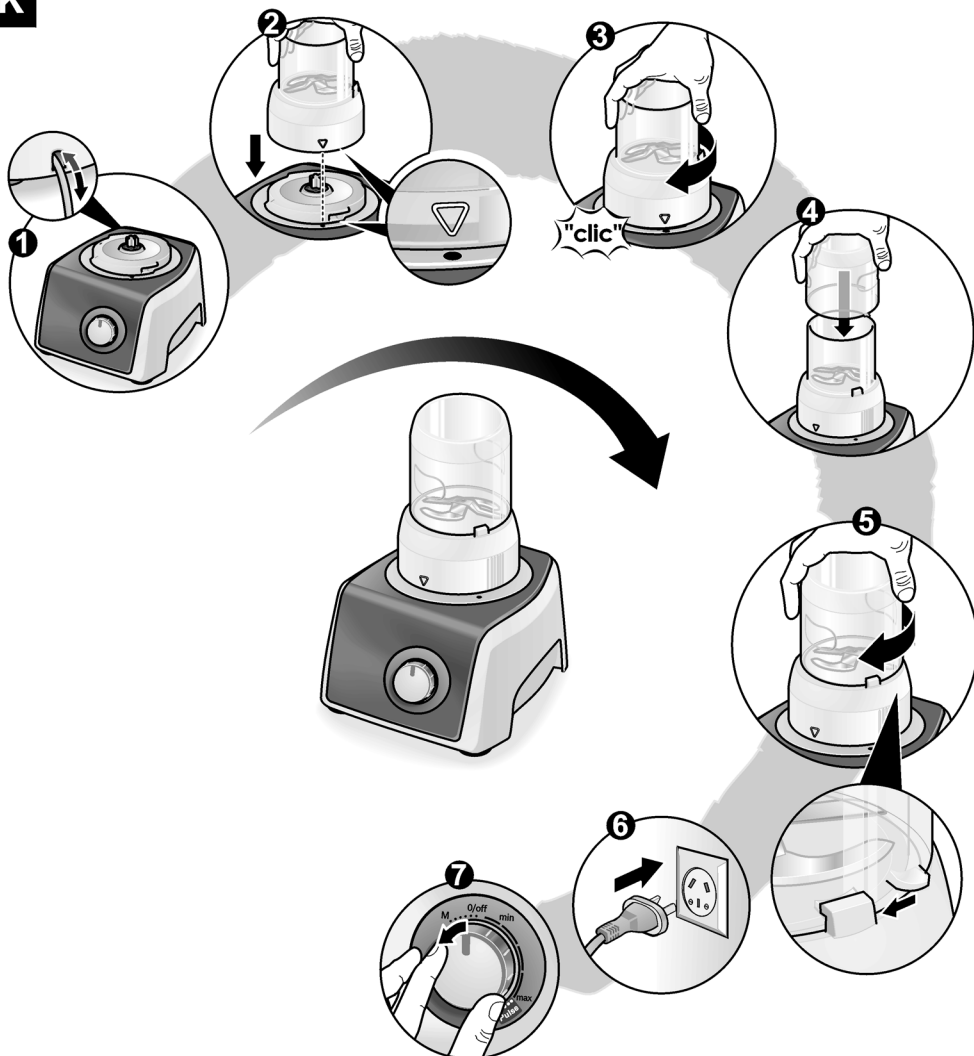
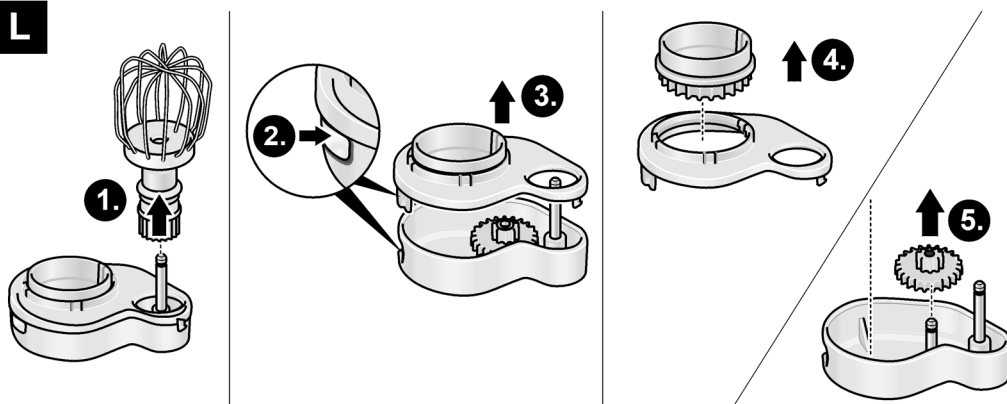
**C**

**D**

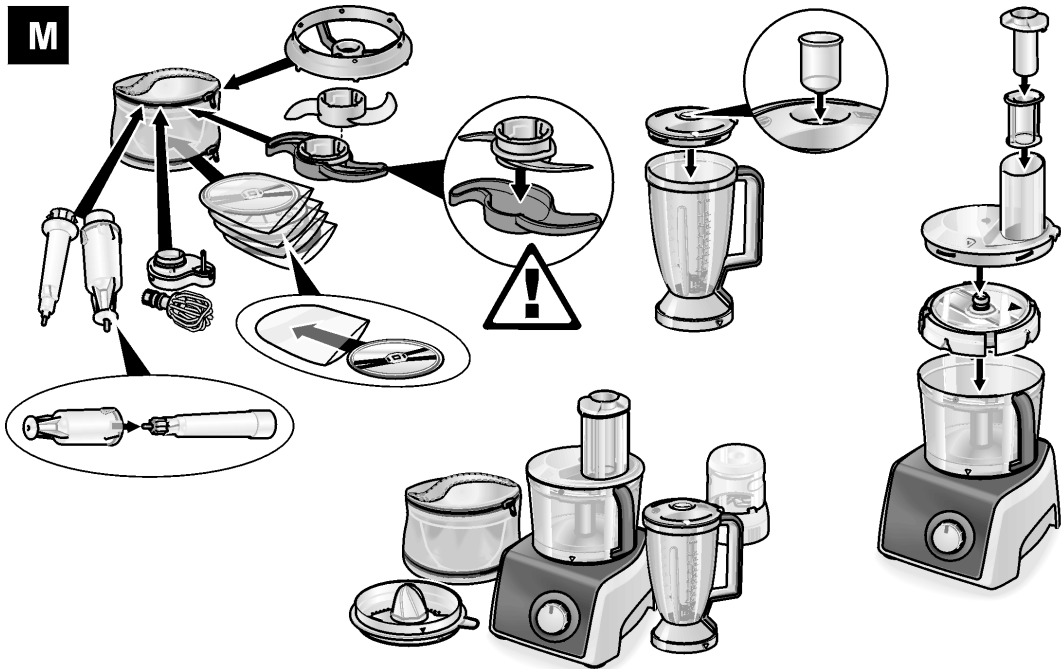











**H****J**








**K****L**

M



N

							
MCM68830AU	✓	✓	✓	✓	✓		✓
MCM68861AU	✓	✓	✓	✓	✓	✓	✓

							
MCM68830AU	✓	✓					✓
MCM68861AU	✓	✓	✓			✓	✓