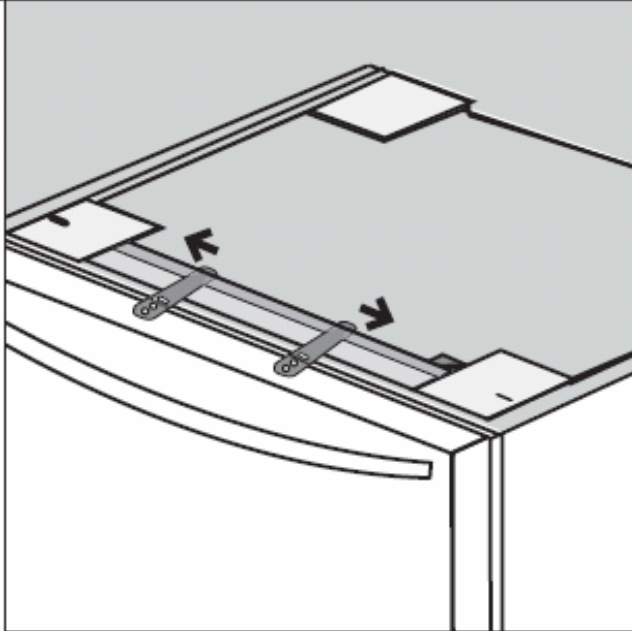


Installing New Style 605007 Dishwasher Mounting Brackets

Reprint from general installation instructions 9000157505

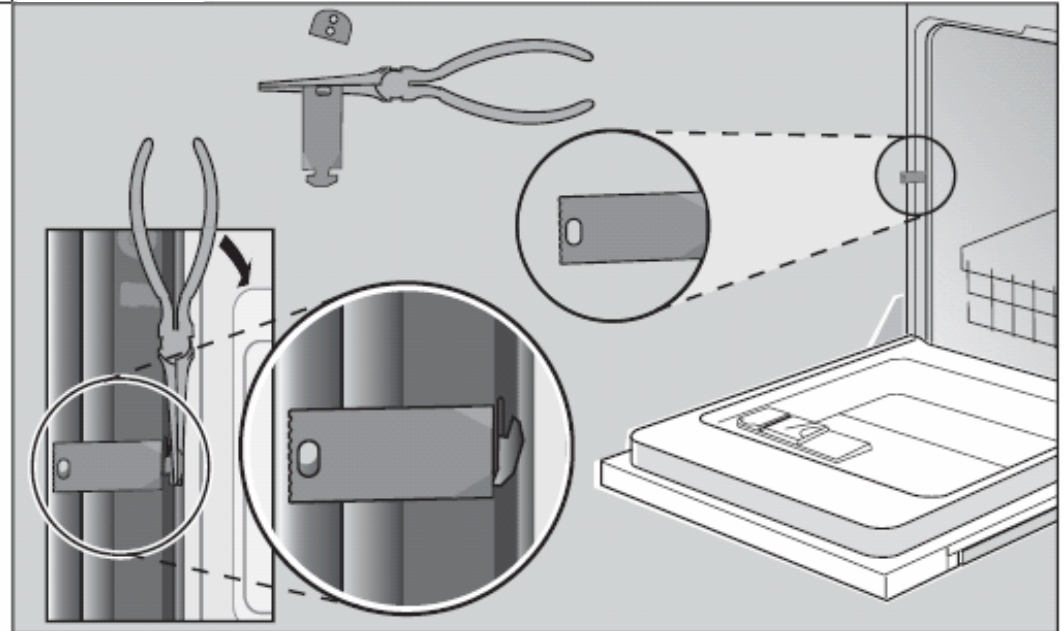
BOSCH

7



If your dishwasher has the pre-attached mounting brackets shown and you have a wooden undercounter, ensure that brackets are positioned as far apart as possible by sliding them within slots in direction of arrows. Do not attach to countertop yet.

8



If your dishwasher has the pre-attached mounting brackets shown in figure 7, and the counter top is stone, using pliers, rotate the bracket flanges so that you are able to remove brackets from the top. Grasp bracket with pliers at perforation and bend until rounded end breaks free. Discard end. Slip brackets through side slots. Using pliers, bend bracket flanges such that the brackets will not slip through slots. Do not attach to countertop yet.

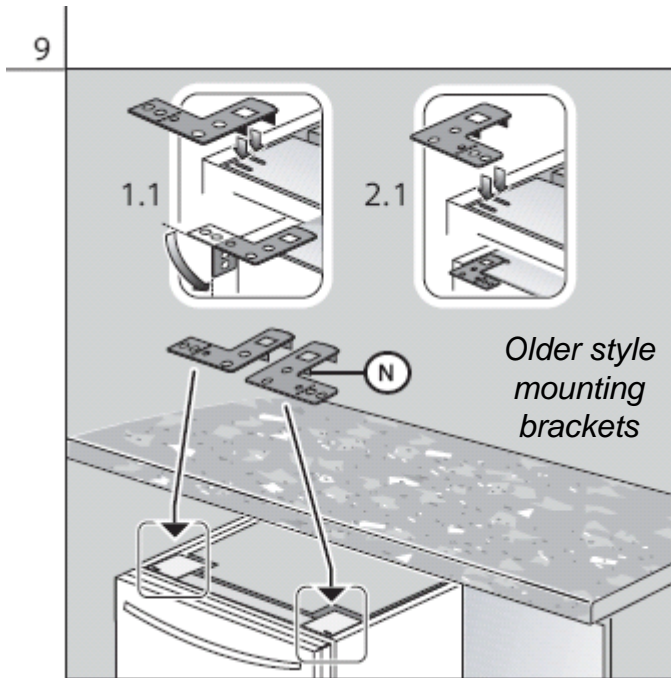


NOTE: Side mounting of brackets does not interfere with side trim strips.

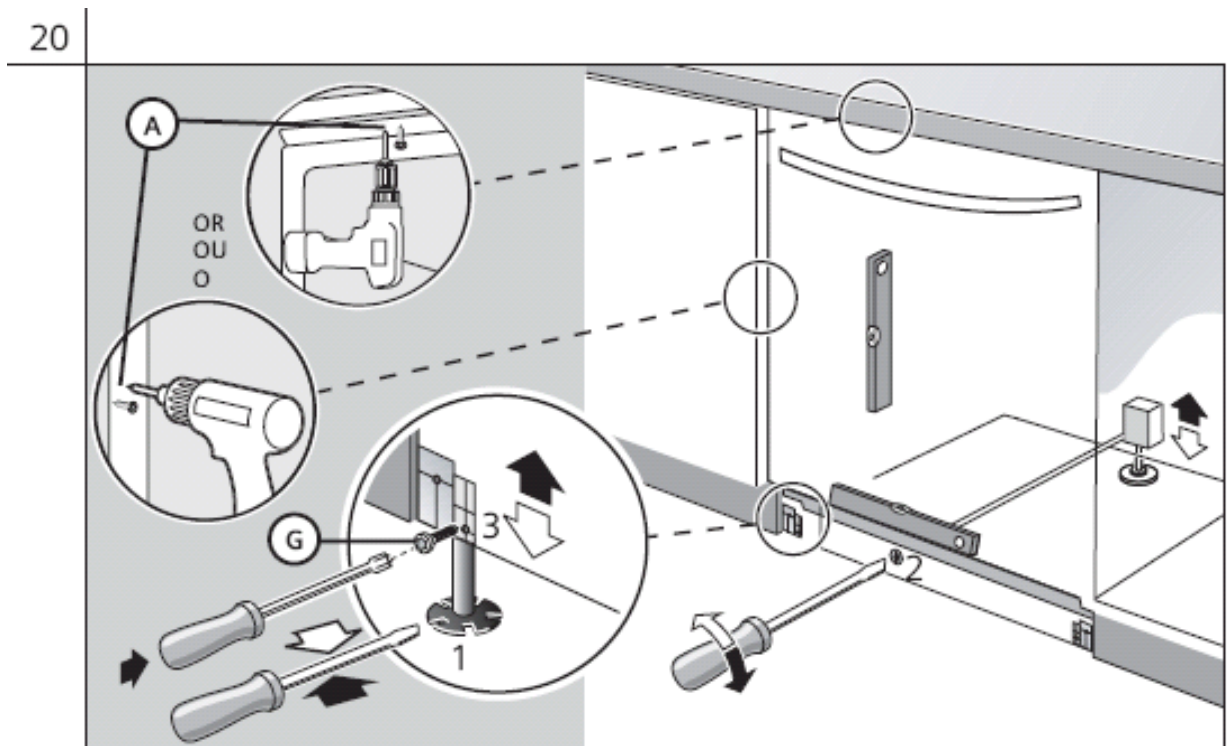
Installing New Style 605007 Dishwasher Mounting Brackets

Reprint from generic installation instructions 9000157505

BOSCH



If your dishwasher does NOT have pre-attached mounting brackets (part N) shown in figure 7, attach the mounting brackets to the top of unit as shown in (1.1) for stone and in (2.1) for wooden undercounter. Do not attach to countertop yet.



Level horizontally by turning feet (1) clockwise to raise or counter-clockwise to lower front of unit. Level vertically by turning center screw (2) to raise or lower the back. Once level, (3) insert leg leveler locking screws (part G) and tighten. Insert screws (part A) through pre-positioned mounting brackets and attach unit to enclosure (pre-drilling of holes recommended).