



Brief and handy:
everything your dishwasher
needs.

**Before using for the first time,
still read the installation and
operating instructions!**

1

Set the water softening system * Quickly sorted

Find out the **water hardness**
at your water utility company
and **enter** below

Read off the set value

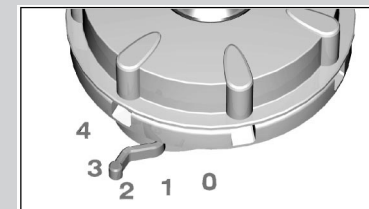
°dH °fH °Clarke mmol/l Set value on
the appliance

0-6	0-11	0-8	0-1,1	0
7-11	12-16	9-11	1,2-2,0	1
12-16	17-29	12-20	2,1-2,9	2
17-21	30-37	21-26	3,0-3,7	3
22-35	38-62	27-44	3,8-6,2	4

* only **before using the
dishwasher for the first
time** or if the **water hard-
ness changes**

and then set the value

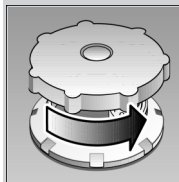
- Identify setting from the following
water hardness table.
- Set the water hardness switch to
the appropriate level.



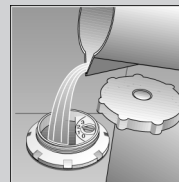
2

Fill with salt

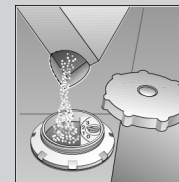
Dissolves limescale (not required for set value 0!)



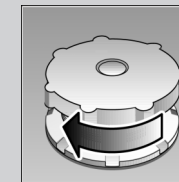
Unscrew
the lid.



**Only before using
the dishwasher
for the first time
pour approx. 1 l /
1 1/4 pt water into
the salt opening.**



Pour in max.
1.5 kg / 3 lb 5 oz
salt (never deter-
gent!)

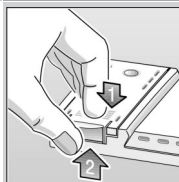


Screw on the
lid. Switch on
dishwasher
immediately.

3

Fill with rinse aid

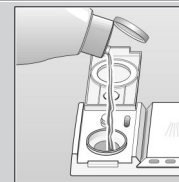
Everything is sparkling clean ...



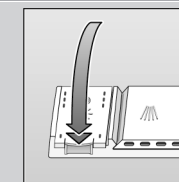
Press mark 1,
lift up lid 2.



Refill whenever level indicator is light!



Pour in
rinse aid.

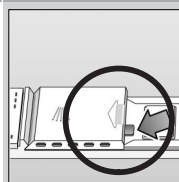


Close the
lid. **CLICK!**

4

Fill with detergent

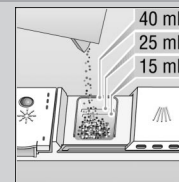
Very dirty dishes, a lot of detergent ...



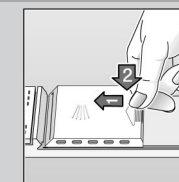
If required, open
the lid (press the
pin).



Warning,
combination
products are not
suitable for all
programmes,
follow manufac-
turer's instructions.



Pour in
detergent.



Push the lid
shut, press.
PLOP!

5

Turn on the tap Switch on the appliance

6

Select programme

Rotate programme selector to right only!

7

Start programme Off we go

Switch on the main switch.
Programme selector rotates in a clockwise
direction and indicates the progress of the
programme.

8

Switch off the appliance Everything o.k.

When the programme has ended (programme selector
is back in the 12 o'clock position), switch off the main
switch. Turn off the tap.

Overview of programmes

The max. possible number of programmes is
indicated in this overview. The appropriate
programmes for your appliance can be found
on the fascia.

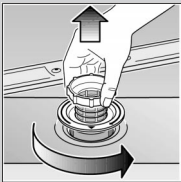
The programme data is based on labora-
tory measured values in compliance with
European standard EN 50242. Deviations
are possible in practice.

	Intensive 65° 	Normal 65° 	Eco 65° 	Prerinse
Duration in minutes	117	110	99	17
Power consumption in kWh	1,40	1,30	1,10	0,12
Water consumption in litres	22	19	16	4

Maintenance and care

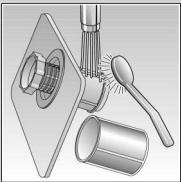
Filters

Check and, if required, clean:

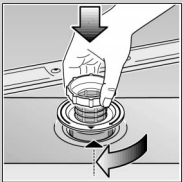


For perfect rinsing results

Rotate filter cylinder, remove filter system



Rinse under running water



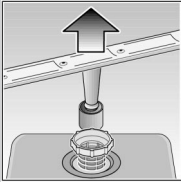
Insert



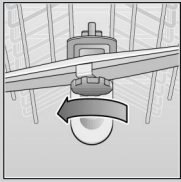
Screw on filter system. NOTE MARK!

Spray arms

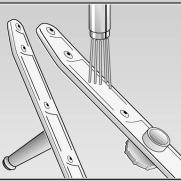
Remove blockages/deposits



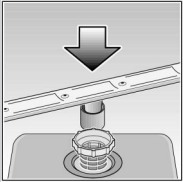
Pull up lower arm



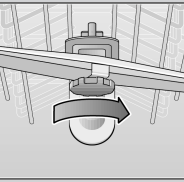
Unscrew upper arm



Clean under running water (if required, use a toothpick)






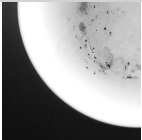
Insert lower arm



Screw on upper arm

Troubleshooting

Dealing with problems correctly ...

Fault	Possible causes	Remedial action	Fault	Possible causes	Remedial action
Residual water in the appliance	Programme not yet finished	Wait until the programme finishes (programme selector is back in the 12 o'clock position) or cancel programme (see below).	Plastic parts/utensil parts discoloured ...	Detergent with lower bleaching effect Insufficient detergent	Use detergent containing chlorine bleach. Follow manufacturer's instructions.
Programme does not continue	Programme interrupted Door is open	Continue the programme (see Interrupting the programme). Close the door, switch on the main switch again.	Milky deposits on the utensils (removable) ... 	Rinse aid dosage too high (visible streaking) Rinse aid dosage too low	Reduce or increase dosage according to instructions.
Appliance does not run/stops	No/insufficient water check whether	Turn on the water supply. Supply fittings unobstructed and not calcified. Supply hose kink-free.	Glasses cloudy/dull ...	Water too hard Glasses not dishwasher-proof Detergent unsuitable	Refill with salt/adjust water softening system. Use dishwasher-proof glasses. Use glass-friendly detergents.
Utensils are not clean 	Utensils close together/on top of each other Insufficient detergent Unsuitable programme Spray arms blocked	Arrange utensils according to instructions. Follow manufacturer's instructions. Select more intensive programme. Re-arrange obstacles (e.g. large spoons).	Rust on the cutlery ... 	Cutlery not rust-resistant	Use dishwasher-proof cutlery.
Sand or gritty residue on the utensils 	Filters loose Filters dirty Spray arm nozzles blocked Insufficient water	Clean filters (see above), attach correctly (MARK). Clean filters (see above). Clean spray arms (see above). See "Appliance does not run".	Further information can be found in the operating instructions ... Self-help is worthwhile!		

Interrupting the programme

- Switch off the main switch.
- To continue the programme, switch on the main switch again.

Cancelling the programme

- Switch off the main switch.
- Rotate the programme selector in a clockwise direction to "Dry" and switch on the main switch again.
- Wait until the Drain programme has finished and the programme selector is back in the 12 o'clock position.
- Start a new programme or switch off the appliance.

Arrange utensils

Arrange dishwasher-proof utensils (having removed any ash, wax, grease, ink, sticky labels; remove, large remnants of jam, dairy products and food) according to the operating instructions and check that the spray arms can rotate freely.