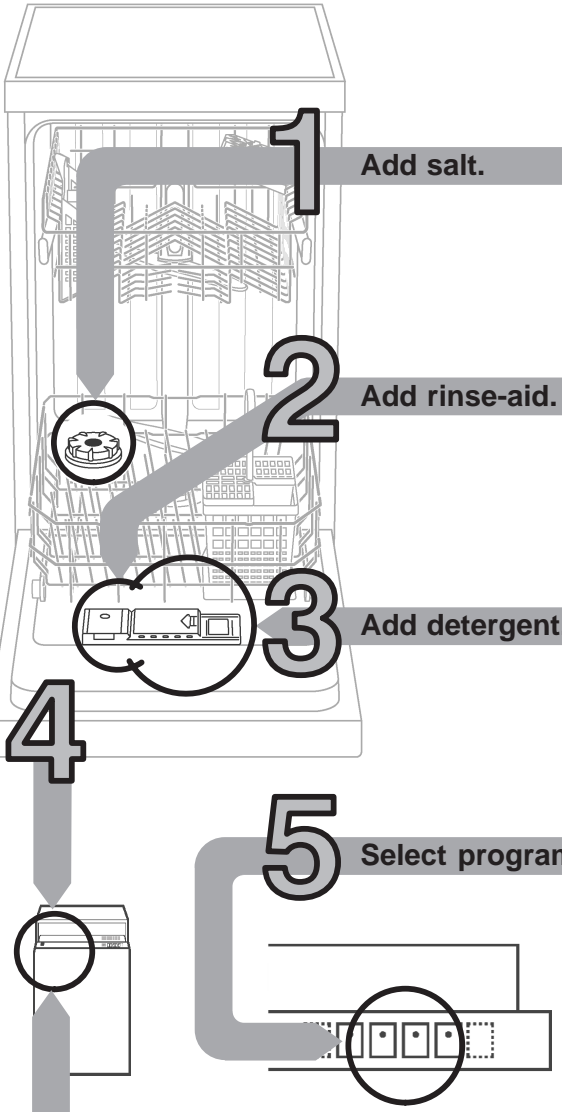




Short and handy: everything your dishwasher needs...
Before using for the first time, read the Installation and Operating Instructions!



Setting the water softening system *

Find out the water hardness at your water utility company and enter below

* only before using the dishwasher for the first time or if the water hardness changes

Read off the setting

°dH	°fH	°Clarke	mmol/l	Setting
0-6	0-11	0-8	0-1.1	0
7-14	12-25	9-18	1.2-2.5	1
15-21	26-37	19-26	2.6-3.7	2
22-35	38-62	27-44	3.8-6.2	3

A

B

C

Reset

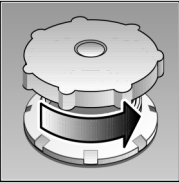
Quickly sorted

and then select a setting

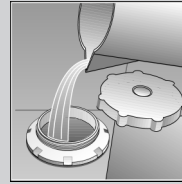
- Hold down programme button **B** and switch on the main switch, then release the buttons. The display flashes and buttons **A** and **B** illuminate (water hardness setting was set to 2 at the factory).
- Each time button **B** is depressed, the setting increases by one (0-3). If buttons **A**, **B** and **C** illuminate, the maximum water hardness setting has been reached. If the water hardness setting is now increased again, the lights go out and the water hardness setting is set to 0.
- Switch off the main switch. The selected setting has been stored in the appliance.

Add salt.

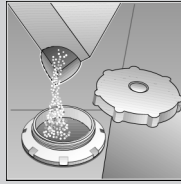
Dissolves limescale (not required for set value 0!)



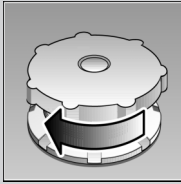
Unscrew the lid.



Only before using the dishwasher for the first time pour approx. 1 l / 1 1/4 pt water into the salt opening.



Pour in max. 1.5 kg / 3 lb 5 oz salt (never detergent!)

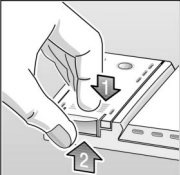


Screw on the lid. Switch on dishwasher immediately.

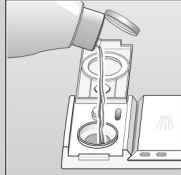
Add rinse-aid.

Everything is sparkling clean ...

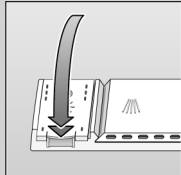
Refill whenever level indicator is light!



Press mark 1, lift up lid 2.



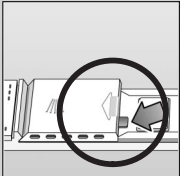
Pour in rinse aid.



Close the lid. CLICK!

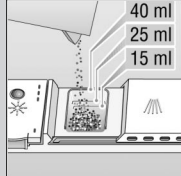
Add detergent.

Very dirty dishes, a lot of detergent ...

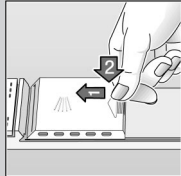


If required, open the lid (press the pin).

Warning, combination products are not suitable for all programmes, follow manufacturer's instructions.



Pour in detergent.



Push the lid shut, press. PLOP!

Select programme.

Quick, economical or intensive ...

Overview of programmes

This overview indicates the max. possible number of programmes. The programmes which correspond to your appliance can be found on your appliance fascia.

The programme data are values measured in the laboratory in compliance with Standard EN 50242. Deviations in practice are possible.

	Intensive 70° 	Normal 65° 	Eco 50° 	Quick 35° 	Prerinse
Duration in minutes	109	104	155	30	20
Power consumption in kWh	1,35	1,15	0,80	0,50	0,10
Water consumption in litres	20	17	13	10	4

Switch appliance ON, off we go...

Press main switch, choose programme.
Close door.

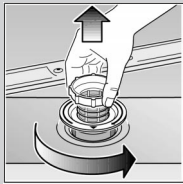
Switch appliance OFF, everything OK...

Signal sounds, open door. End-of-programme indicator flashes, press main switch.

Maintenance and care

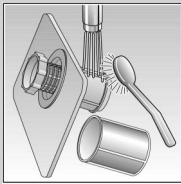
Filters

Check and, if required, clean:

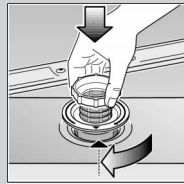


For perfect rinsing results

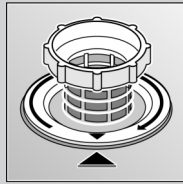
Rotate filter cylinder, remove filter system



Rinse under running water



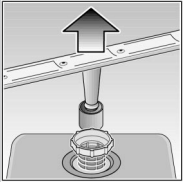
Insert



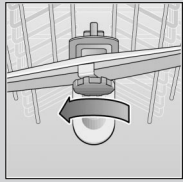
Screw on filter system. NOTE MARK!

Spray arms

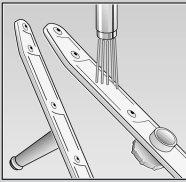
Remove blockages/deposits



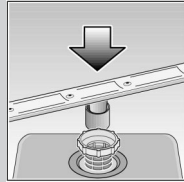
Pull up lower arm



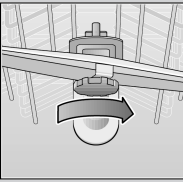
Unscrew upper arm



Clean under running water (if required, use a toothpick)



Insert lower arm



Screw on upper arm

Breakdown and assistance

The correct procedure

Problem

Possible causes

Remedy

Water left in the appliance
Appliance not working/
stopst ...

The appliance was opened
during the programme ...

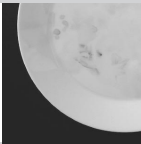
Close the appliance and switch
it on, or stop the programme
(see Stopping the programme).

Appliance not working/
stops ...

No / too little water
check whether ...

the water supply is turned on.
the supply fittings are not
obstructed or furred up.
the supply hose is not bent.

The crockery is
not clean ...

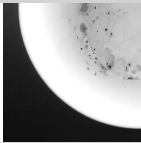


Crockery is stacked too closely
together/on top of each other ...
Too little cleaning agent ...

Wrong programme ...
The spray arms are obstructed

Reload according to the
instructions.
Refer to the manufacturer's
instructions.
Select the appropriate
programme.
Rearrange items causing a
blockage (e.g. large spoons).

There are powdery or
greasy residues on the
crockery ...



The filter is loose ...

The filter is dirty ...
The spray arm nozzles are
blocked ...
Too little water ...

Clean the filter (see above)
secure the filter correctly
(MARKING).
Clean the filter (see above).
Clean the spray arms (see above).

See "Appliance is no longer
working".

Problem

Possible causes

Remedy

Plastic parts/crockery
discoloured ...

Use a milder cleaning agent ...
Too little cleaning agent ...

Use a cleaning agent containing
chlorine bleach.
Refer to the manufacturer's
instructions.

Milky deposits on
the crockery
(removable) ...



Rinsing agent dose too high
(streaks visible) ...
Rinsing agent dose too
low ...

Reduce or increase the dosage
according to the instructions.

Glasses
cloudy/dull ...

Water too hard ...

Glasses not dishwasher-proof ...

Unsuitable cleaning agent ...

Refill the special salt/
adjust water softening system.
Use dishwasher-proof
glasses.
Use a glass-enhancing
cleaning agent.

Rust on the
cutlery ...



Cutlery not
rustproof ...

Use dishwasher-proof cutlery.

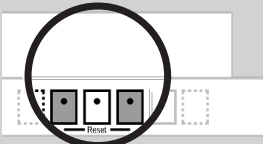
You will find further information in the instructions for use ...
you may be able to solve the problem yourself.

Interrupting the programme ...

Terminating the programme ...

- Open the door.
- Press the **START/STOP** button.
- To continue, press the **START/STOP** button again.
- Close the door.

- Open the door.
- Press the two **RESET** buttons **simultaneously** (approx. 3 seconds) (**RESET**).
- Close the door.



After 1 minute the
programme ends.
The "signal
sounds and the
standby indicator
illuminates".

Switch off the
appliance.

Arranging dishes correctly ...

Arrange dishwasher-proof dishes in accordance with the operating manual
(without residual ash, wax, lubricating grease, ink, sticky labels; remove any
large remnants of jam, milk products or food) and check that the spray arms
can rotate freely.