


Brief and handy: Everything your dishwasher requires

 Before using the appliance for the first time, still read the installation and operating instructions!

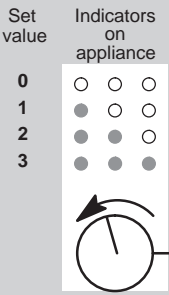
1

### Adjusting the water softening \*

Ask your water utility company about the hardness value and enter ...

Read off the set value

°dH	°fH	°Clarke	mmol/l	Set value
0-6	0-11	0-8	0-1,1	0
7-16	12-29	9-20	1,2-2,9	1
17-21	30-37	21-26	3,0-3,7	2
22-35	38-62	27-44	3,8-6,2	3



Quickly sorted out ... and proceed as follows ...

Hold down the Start/STOP button. + Simultaneously rotate the programme selector one position in an anti-clockwise direction.

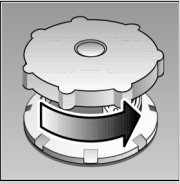
Release the START/STOP button. The salt refill indicator flashes, set value 2 is displayed.

Press the START/STOP button until the desired value is obtained. Rotate the programme selector to the OFF position. Set value is stored.

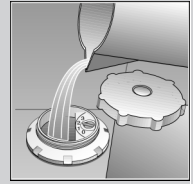
\* only before using the appliance for the first time or if the water hardness has been changed

2 Add salt

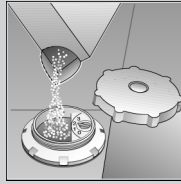
Dissolves limescale (not required for set value 0!)



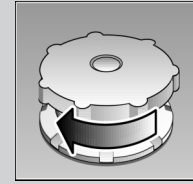
Unscrew the lid.



Only before using the dishwasher for the first time pour approx. 1 l / 1 1/4 pt water into the salt opening.



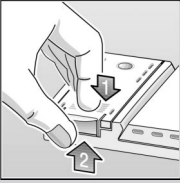
Pour in max. 1.5 kg / 3 lb 5 oz salt (never detergent!)



Screw on the lid. Switch on dishwasher immediately.

3 Add rinse-aid

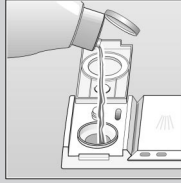
Everything is sparkling clean ...



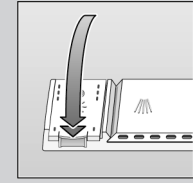
Press mark 1, lift up lid 2.



Refill whenever level indicator is light!



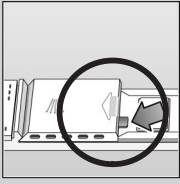
Pour in rinse aid.



Close the lid. CLICK!

4 Add detergent

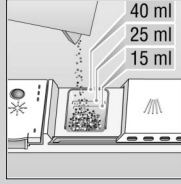
Very dirty dishes, a lot of detergent ...



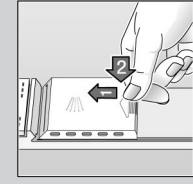
If required, open the lid (press the pin).



Warning, combination products are not suitable for all programmes, follow manufacturer's instructions.



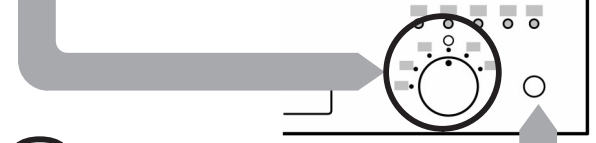
Pour in detergent.



Push the lid shut, press. PLOP!

5 Turn on the tap Water flows in ...

6 Select a programme = Switch on the appliance



8 Start the programme Washing starts ... Press the Start/Stop button

9 Switch off the appliance Everything o.k. ... If the programme end indicator illuminates, rotate the programme selector to the OFF position. Turn off the tap.

7

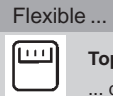
### Overview of programmes

This overview indicates the max. possible number of programmes. The programmes which correspond to your appliance can be found on your appliance fascia.

The programme data are values measured in the laboratory in compliance with Standard EN 50242. Deviations in practice are possible.

	Intensive 70°	Normal 65°	Eco 50°	Gentle 40°	Quick 35°	Prerinse
Duration in minutes	120	125	125	90	35	15
Power consumption in kWh	1,70	1,45	1,24	0,90	0,70	0,10
Water consumption in litres	20	19,5	18,0	16	12,0	5,0

### Additional optionsktionen \*\*



Top basket washing ... dishes are washed in the top basket only.



Time reduction/ time saving ...shortens the cleaning time, reduces the drying.



Timer programming ... Select programme, press timer programming button: Programme start is postponed by 3 or 9 hours.

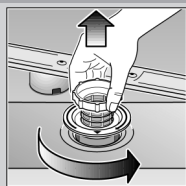
\*\* some models

# Maintenance and care

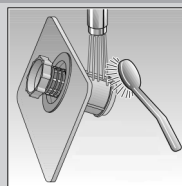
For perfect rinsing results

## Filters

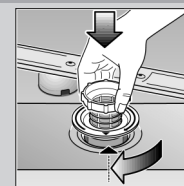
Check and, if required, clean:



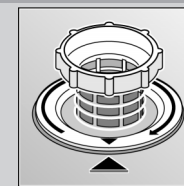
Rotate filter cylinder, remove filter system



Rinse under running water



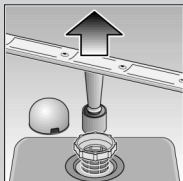
Insert



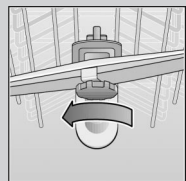
Screw on filter system. NOTE MARK!

## Spray arms

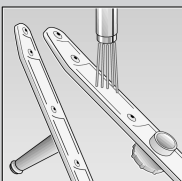
Remove blockages/deposits



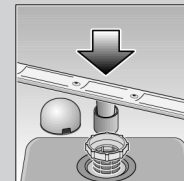
Pull up lower arm



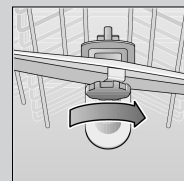
Unscrew upper arm



Clean under running water (if required, use a toothpick)



Insert lower arm



Screw on upper arm

# Troubleshooting

Correct procedure ...

Fault	Possible causes	Remedial action
Residual water in appliance ...	Programme has still not ended ...	Wait until programme ends (programme ends – indicator illuminates) or terminate programme (see below).
Programme does not continue running ...	Programme interrupted ... Programme selector moved to ineffective position ... Door is open ...	Continue programme (see Interrupting programme). Reselect desired programme. Close door, programme is automatically continued.
Appliance does not run/stops ...	No / too little water check whether ...	Water supply open. Supply fittings free and not calcified. Supply hose without kinks.
Dishes are not clean ...	Dishes close together/on top of each other ... Insufficient detergent ... Unsuitable programme ... Spray arm blocked ...	Arrange dishes according to instructions. Observe manufacturer's specifications. Select suitable programme. Re-arrange obstacles (e.g. large spoons).
Sand or gritty residue on the dishes ...	Filters not firmly ... Filters dirty ... Spray arm nozzles blocked ... Insufficient water ...	Clean filters (see above) attach correctly (MARK) Clean filters (see above). Clean spray arms (see above). See Appliance does not run.

Fault	Possible causes	Remedial action
Plastic/utensil parts discoloured ...	Detergent with reduced bleaching effect ... Insufficient detergent ...	Use detergent with chlorine bleaching. Observe manufacturer's specifications.
Milky coating on dishes (removable) ...	Rinse-aid dosing too high (visible streaking) ... Rinse-aid dosing too low ...	Reduce or increase dosing according to instructions.
Glasses clouded, dull ...	Water too hard ... Glasses not dishwasher-proof ... Detergent unsuitable ...	Refill with salt/adjust water softening system. Use dishwasher-proof glasses. Use detergents which are gentle on glasses.
Rust on the cutlery ...	Cutlery not stainless ...	Use dishwasher-proof cutlery.

More information can be found in the operating instructions ...  
Troubleshooting is worthwhile!

## Interrupting the programme ...

- Press the START/STOP button.
- To continue, press the START/STOP button again.  
If the door was opened, just close the door again.

## Terminating the programme ...

- Press the START/STOP button (approx. 3 seconds) until the End-of-programme indicator flashes.
- Wait (approx. 1 minute) until the flashing stops and the Standby indicator illuminates.
- Restart programme or switch off appliance.

## Arranging dishes

Arrange dishwasher-proof dishes in accordance with the operating manual (without residual ash, wax, lubricating grease, ink, sticky labels; remove any large remnants of jam, milk products or food) and check that the spray arms can rotate freely.