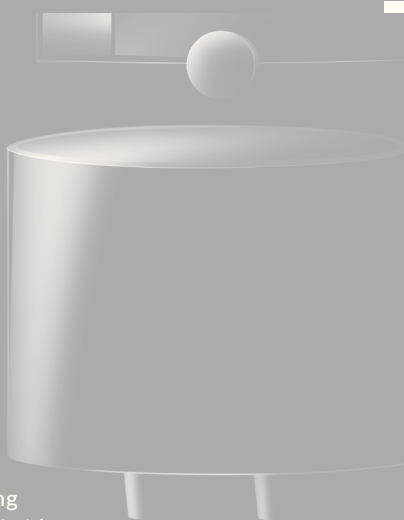


Mat.-Nr. 5090481557

VeroBar



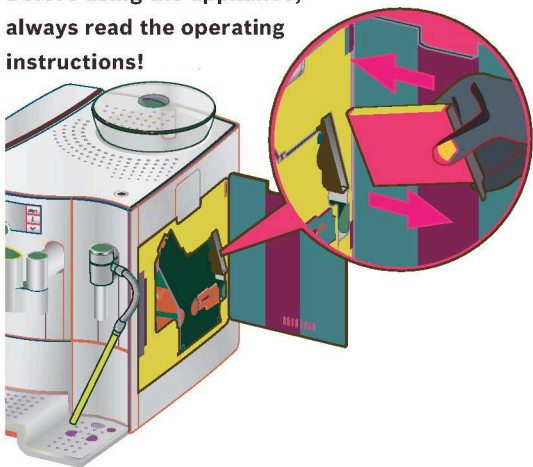
de Kurzanleitung
en Quick User Guide



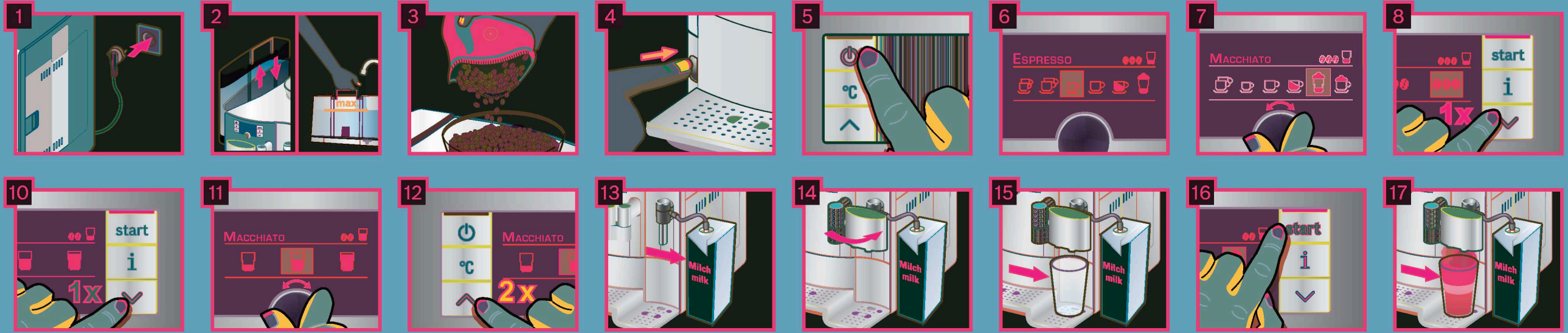
BOSCH



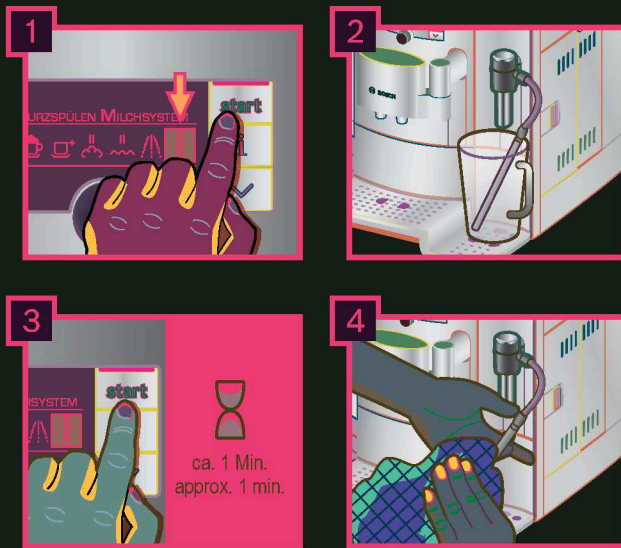
**Vor Gebrauch unbedingt die
Gebrauchsanleitung lesen!
Before using the appliance,
always read the operating
instructions!**



Ein Beispiel Zubereitung
Macchiato
 Sample Preparation
Macchiato

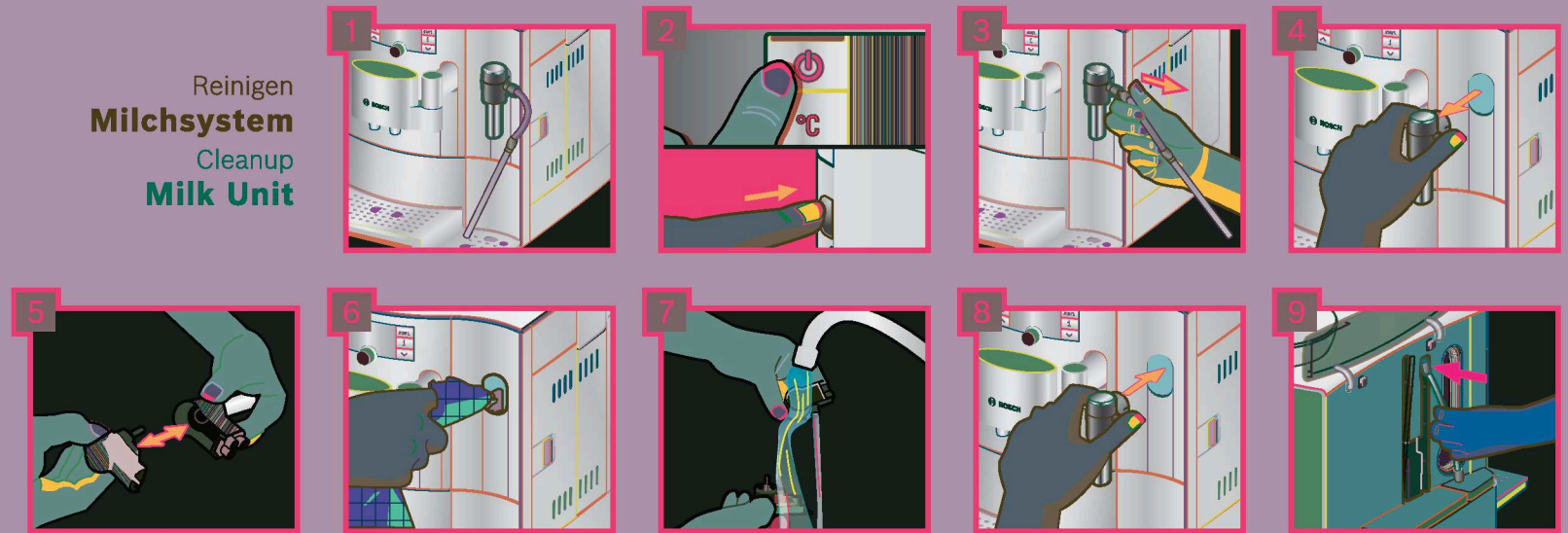


Kurzspülen
Milchsystem
 Quick Rinse
Milk Unit

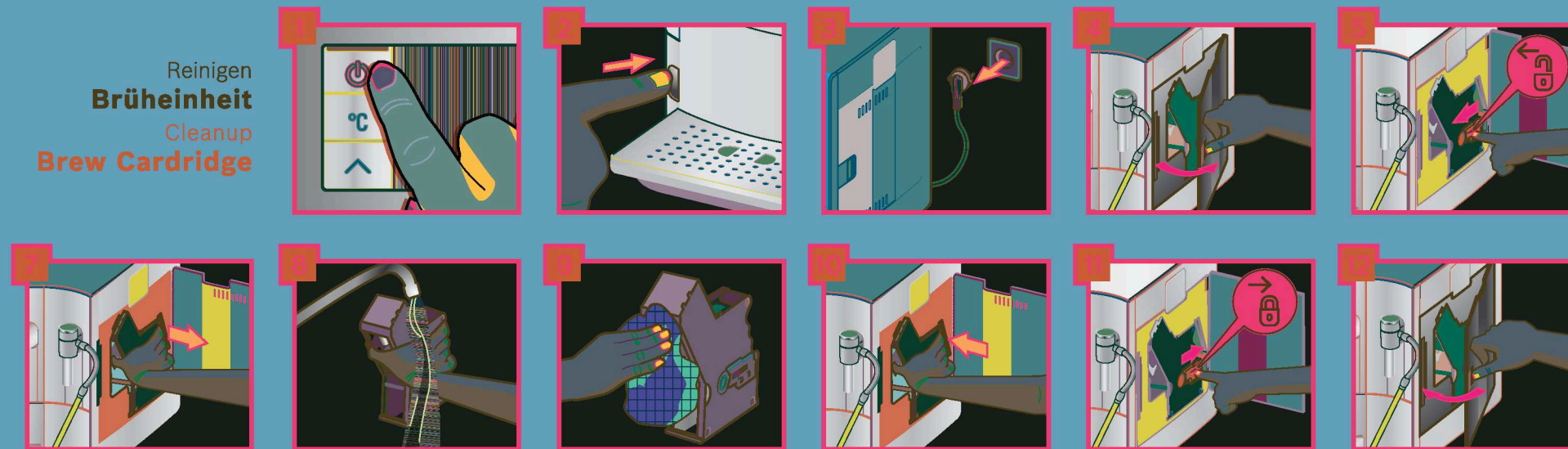


ca. 1 Min.
 approx. 1 min.

Reinigen
Milchsystem
 Cleanup
Milk Unit



Reinigen
Brüheinheit
 Cleanup
Brew Cartridge



Service-Programm de
Calc'n'Clean
 Service Program en
Calc'n'Clean

1 ESPRESSO SERVICE-CALC'N'CLEAN → i-TASTE 3 SEK.
 ESPRESSO SERVICE-CALC'N'CLEAN → i-BUTTON 3 SEK.

2

3 ca. 3 Sek. approx. 3 sec.

4 EINSTELLUNGEN REINIGEN CALC'N'CLEAN → START UHR ANZEIGEN
 SETTINGS CLEAN CALC'N'CLEAN → START SHOW CLOCK

5

6

7

8

9 ca. 1 Min. approx. 1 min.

10

11 max. 0,5 l 17 fl.oz.

12 ca. 20 Min. approx. 20 min.

13

14 ca. 8 Min. approx. 8 min.

15

16

17

Service-Programm de
Entkalken
 Service Program en
Descaling

1 ESPRESSO SERVICE-ENTKALKEN → i-TASTE 3 SEK.
 ESPRESSO SERVICE-DESCALE → i-BUTTON 3 SEK.

2

3 ca. 3 Sek. approx. 3 sec.

4 EINSTELLUNGEN WASSERHÄRTE ENTKALKEN → START REINIGEN
 SETTINGS WATER HARDNESS DESCALING → START CLEAN

5

6

7

8

9 ca. 1 Min. approx. 1 min.

10 max. 0,5 l 17 fl.oz.

11 ca. 20 Min. approx. 20 min.

12

13 ca. 1 Min. approx. 1 min.

14

15

16

Service-Programm de
Reinigen
 Service Program en
Cleaning

1 ESPRESSO SERVICE-REINIGEN → i-TASTE 3 SEK.
 ESPRESSO SERVICE-CLEAN → i-BUTTON 3 SEK.

2

3

4 ca. 3 Sek. approx. 3 sec.

5 EINSTELLUNGEN ENTKALKEN REINIGEN → START CALC'N'CLEAN
 SETTINGS DESCALING CLEAN → START CALC'N'CLEAN

6

7

8

9

10 REINIGEN 1/4 REINIGUNGSPROGRAMM LAUFT
 CLEANING 1/4 CLEANING

11

12 ca. 7 Min. approx. 7 min.

13

14