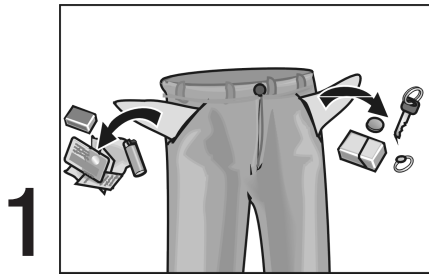




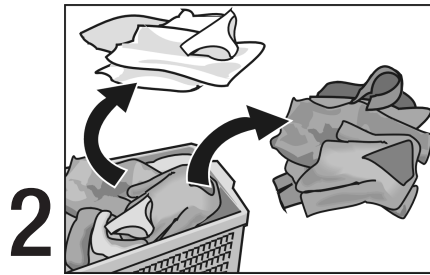
Quick-reference instructions

Please read and observe these operating and installation instructions carefully before using the washing machine for the first time.

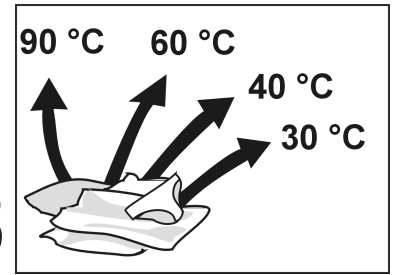
BOSCH



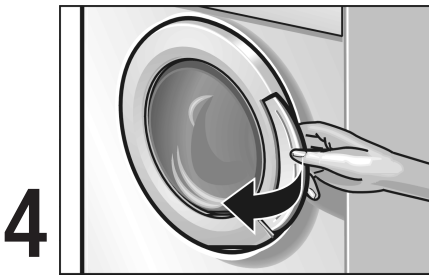
1



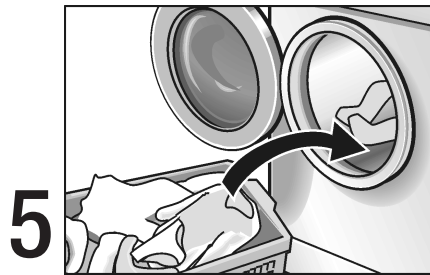
2



3



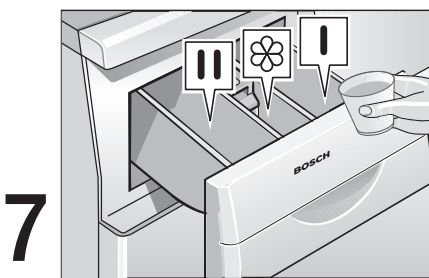
4



5



6



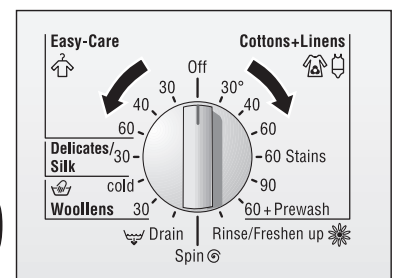
7

As required

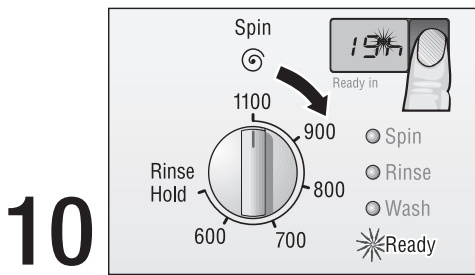


8

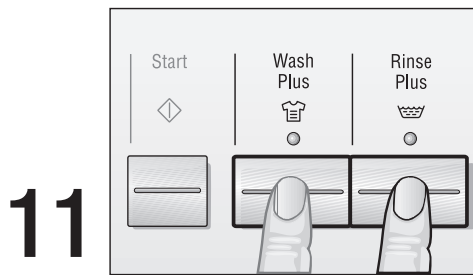
As required



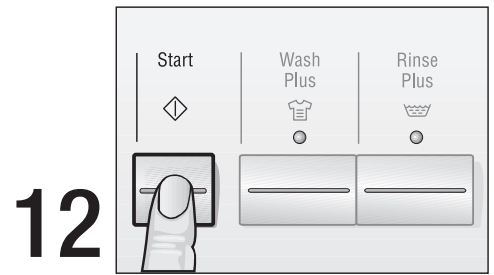
9



10

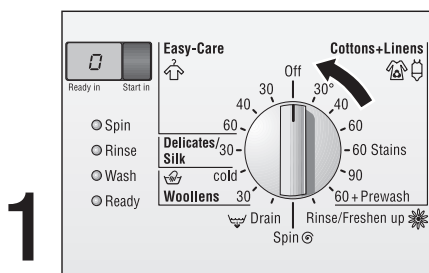


11



12

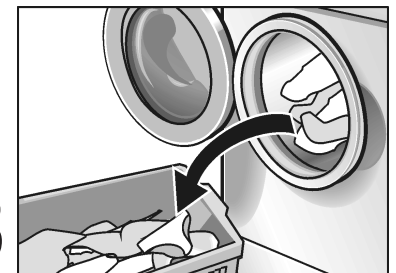
At the end of the programme



1



2







3

Overview of programmes

The following **additional options** can be selected in addition to the programmes:

- Button **“Wash Plus“**: extended intensive washing
- Button **“Rinse Plus“**: extra rinse cycle,
- **“Rinse hold”** (Spin speed selector): laundry is left in the final rinsing water.

Type of laundry Note care labels!	Laundry amount	Programme*	Degree of dirt	Required additional option button
For hard-wearing textiles, heat-resistant textiles, e.g. cotton or linen 	6 kg / 13.2 lb	30, 40***, 60 °C Cottons+Linens	light to normal	Wash Plus
		60 °C Stains, Cottons+Linens***	normal with stains	Wash Plus
		90 °C Cottons+Linens	normal	Wash Plus
	up to 5 kg / 11 lb	60 °C Cottons+Linens + Prewash**	heavy	Wash Plus
		30, 40, 60 °C Cottons+Linens	light	–
		30, 40, 60 °C Cottons+Linens	normal to heavy	Wash Plus
For easy-care textiles, e.g. cotton, linen, synthetic materials or blended fabrics 	up to 3 kg / 6.6 lb (or 8 shirts)	30, 40, 60 °C Easy-Care	light	–
		30, 40***, 60 °C Easy-Care	normal to heavy	Wash Plus
For delicate, washable textiles, e.g. silk, satin, synthetic materials or blended fabrics (e.g. curtains) 	up to 2 kg/ 4.4 lb	30 °C Delicates/Silk	light	–
		30 °C Delicates/Silk	normal to heavy	Wash Plus
For hand and machine washable wool or wool-rich textiles, e.g. cashmere, mohair or angora. Also suited for hand washable silk 	up to 2 kg / 4.4 lb	cold, 30 °C 👉 Woollens	light	–
		cold, 30 °C*** 👉 Woollens	normal to heavy	Wash Plus

Programme options

Programme selector	Notes / Application
Rinse/Freshen up	Rinse cycle with subsequent spin cycle for rinsing hand-washed laundry or for starching. Please comply with the maximum spin speeds as specified in the operating and installation manuals. Also suited to “Freshen up” items, that have been tucked away or stored for a period of time, to remove creases caused by folding and storage and to eliminate odours. Use fabric conditioner for “fresh” smell. Do not use detergent (this is not a wash programme).
Spin	Spin cycle for spinning hand-washed laundry. Washing solution or rinsing water is drained prior to the spin cycle. Please comply with the maximum spin speeds as specified in the operating and installation manuals.
Drain	Water is drained after a washing programme with the “Rinse hold” setting. For gentle treatment of delicate laundry.

* Add detergent to dispenser **II** (on left) for all programmes without prewash.

** Pour detergent into dispensers **I** and **II**.

*** Programme setting for test in accordance or in conformity with EN 60 456 and IEC 60 456.

Further information can be found in the operating and installation manual.
Please read the manual carefully and comply with the safety instructions.