

Invented for life



BOSCH

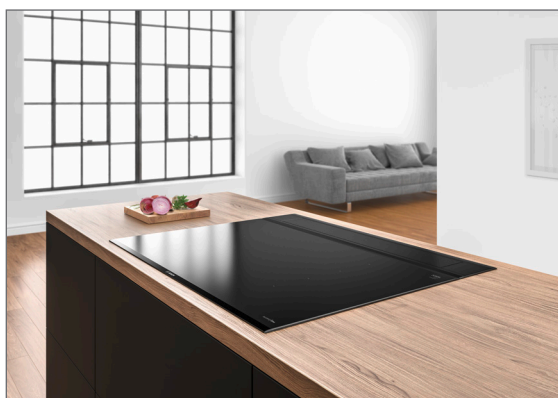
The Bosch downdraft ventilation.

Installation Guide



Always there when you need it.

Our new Glass Draft module is not just the perfect ventilation solution for wide hobs with up to 5 cooking zones. It's also the spectacular design highlight for your kitchen island solution with strong extraction, regardless of pot height and pot position on the cooktop. With a 62 dB noise level, a 90 percent grease separation level, a 501 m³/h extraction rate at level 3 and low energy consumption that qualifies it for energy efficiency class A, the Glass Draft module is not only powerful but also achieves the best values on the Energy Label.



Seamless design:

The new Glass Draft module opens up new opportunities for kitchen planning. The ventilation module is positioned directly behind the hob, so that steam and odours can be extracted right where they originate. The annoyance of rising steam and fogged glasses is finally a thing of the past. When not in operation, the module can be lowered into the worktop, making it

almost invisible. The design of the Glass Draft is precisely coordinated with the design of our Bosch hobs. When installed side by side, the transition between the two appliances is practically seamless. And we aren't alone in our enthusiasm for the design – the design jury agreed. The new Glass Draft module won the 2020 reddot Design Award.



Decorative LED-illumination:

The decorative LED-illumination enhances the atmosphere in your kitchen. Select a colour to match your mood or taste. With the Home Connect app, you can also choose from the entire RGB colour spectrum.



Guided Air:

To ensure that the rising steam can be extracted from all cooking zones – even from the ones in the front – , a V-shaped air curtain is generated behind the glass panel. As a result, extraction is more effective and you also have clean air in your kitchen.

PerfectAir sensor:



Wouldn't you like to focus all your attention on cooking while totally relying on your extractor hood? The PerfectAir sensor takes control of the situation, constantly monitoring the air and automatically adapting the extraction rate to the rising steam and odours – continuously, precisely and independently of power settings. At the same time, it reduces the noise level by activating only the minimally required extraction level. When you've finished cooking, the blower continues to run until the kitchen air is cleared of all unpleasant odours.

Hob-based hood control:



Both the electric hob and the Glass Draft module are equipped with a WiFi module that enables them to interact. As soon as your cooktop is activated, the ventilation module is also switched on and starts extracting annoying steam as soon as you start cooking. When you're done cooking, the hood automatically switches off after a brief run-on time, so you can be sure that unpleasant kitchen odours really do disappear. If you want to control the hood yourself, just activate manual mode on the hob controls with the touch of a finger. You can then control your hood's power levels directly via the controls on your cooktop. The hood can also be controlled via the Home Connect app.

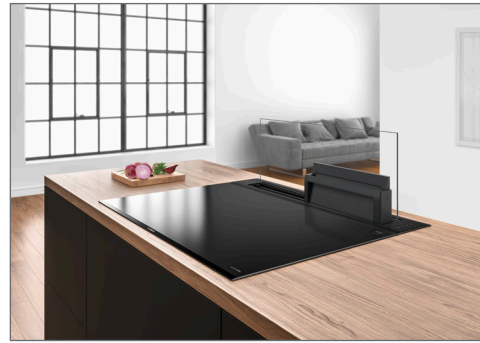
EcoSilence Drive motor:



The EcoSilence Drive™ motor saves electricity without sacrificing performance. Driven by a permanent magnet, it generates nearly no mechanical friction. This means that it's not only extremely robust, quiet and durable it's also efficient.

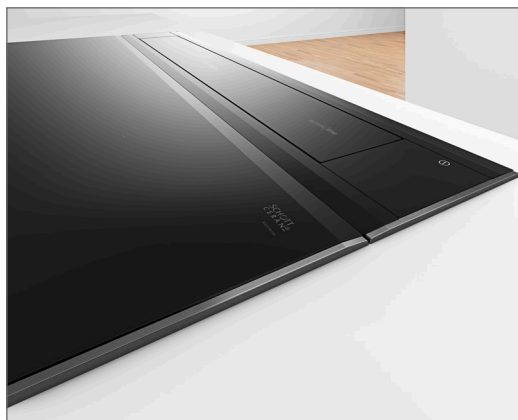
Metal grease filter:

The Glass Draft is equipped with two 15-layer metal grease filters that filter grease and other solids out of the extracted air. To keep these filters operating at maximum efficiency, they need to be cleaned about every two months either by hand or in the dishwasher. But don't worry, the Glass Draft will tell you when. To make the filters easy to remove, they're each integrated into a filter cartridge. It just takes a press of a button to raise them up so that they can be easily removed. 1 cartridge = 85 ml – 2 cartridges = 170 ml, just in case a pot boils over while you're cooking.



The perfect design match.

The new accent line Glass Draft Module has been designed to match perfectly to our Bosch hobs. Thus, the ventilation module can be installed in two different ways. You can install the Glass Draft Module like a standard downdraft solution with a gap between hob and ventilation module. The appliances would then need two separate cutouts. Due to its design, the new Glass Draft module now also can be installed seamless: thus, both appliances can be installed in one cutout. To guarantee a flawless installation, please use the Bosch special accessory: the seamless installation frame.



	 <p>PXV890DV5E – 80 cm width – ComfortProfile – 1 FlexInduction zone</p>	 <p>PXY895DV1E – 80 cm width – ComfortProfile – 2 FlexInduction zones</p>
 <p>DDW88MM66* – 80 cm width – ComfortProfile</p>	good match	better match

*Additional accessory necessary: DSZ8WW1Y2 (purchased separately)
Mounting kit for seamless installation of 2 appliances in one worktop cut-out

More flexibility – more storage space.

We improved the construction of our new ventilation module. Beside offering an unique glass design, the motor of the Glass Draft Module can be placed very flexible: behind or in front of the hood. But also up to 3 m distance between hood and motor are now possible. This gives you more flexibility in installing the hood. But also more space in the lower cabinet. No matter if you prefer drawers or shelves: there is enough space for all of it.



Motor at the front.



Remote blower installation.



Motor in the back.

For the perfect functioning of the Glass Draft Module.

The detailed information on the following pages helps make planning and installation easier.



Semi island

Countertop depth:
750 mm in Seamless installation
800 mm in Standard installation



Semi island

Countertop depth:
750 mm in Seamless installation
800 mm in Standard installation



Island solution

Countertop depth: variable

The duct is behind the lower cabinet. Motor is in remote installation.

- ▶ A drawer underneath the worktop is possible – without shortening.
- ▶ Drawers and shelves can retain their full depth
- ▶ A cabinet rear panel is now possible – in front of the hood.
- ▶ The cabinet rear panel and baseboard may need to be cut out or removed.

The duct and the motor are inside of the lower cabinet.

- ▶ A drawer underneath the worktop is possible – without shortening.
- ▶ Depending on the worktop depth, the bottom shelf or drawer in the cabinet may need to be shortened. The next smallest standard depth dimension can also be used.

The duct and the motor are between the cabinets, or ideally in the rear lower cabinet.

- ▶ A drawer underneath the worktop is possible – without shortening.
- ▶ Drawers and shelves can retain their full depth.
- ▶ A cabinet rear panel is now possible – in front of the hood.
- ▶ An appropriate access point must be provided in the rear wall or rear cabinet to allow access to the blower motor and ductwork for maintenance purposes.

The perfect combination. Easy to plan.

The Glass Draft Module needs either an exhaust system or recirculating system. An exhaust system is appropriate when fumes can be ducted directly to the outside. If this is not the case, a CleanAir Plus recirculation kit needs to be installed. This recirculation kit cleans the air with an activated charcoal filter, named CleanAir Plus odour filter, before returning it to the room. It filters a very high amount of odours out of the air so that even unpleasant fish odour has no chance to stay. The filter retains an extremely high amount of airborne pollen and deactivates allergenes which are retained by the filter. The lifetime of the CleanAir Plus odour filter lasts 12-18 months.



Recirculation system.

A recirculation kit cleans the air with an activated charcoal filter. The kit also contains a short piece of round duct to guide the air into the plinth area. The necessary 400 cm² backflow opening can be provided by a base air ventilation grid or by shortening the plinth panel of the complete installation.

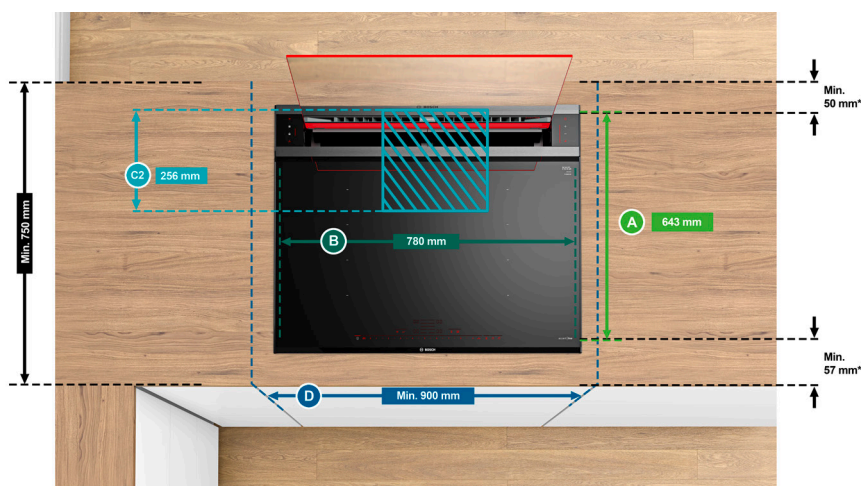
Exhaust system.

Depending on the kitchen layout, the air can be sent to the wall opening with standard round or flat channel ducting.

Installation information for recirculation system.

The following installation drawings show how to install the recirculation version of the Glass Draft Module. The Glass Draft Module is combined with a 80 cm wide cooktop. Both products come with a ComfortProfile frame.

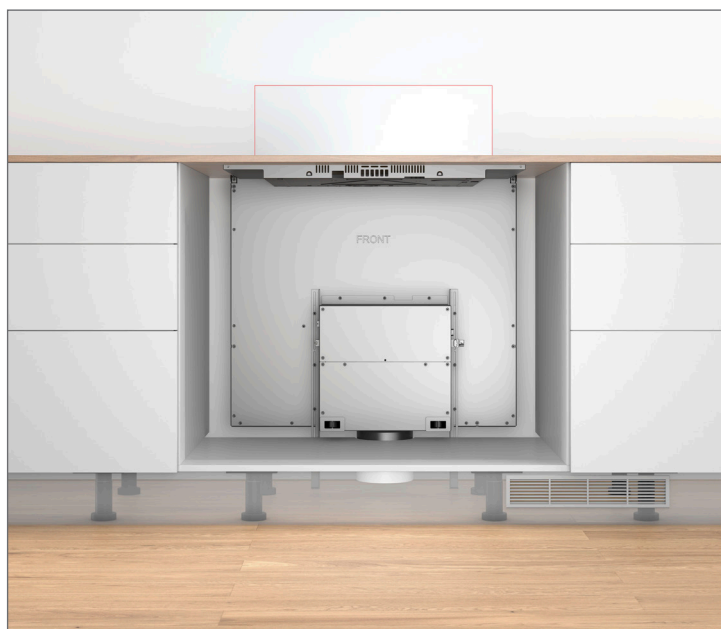
Top view:



*Distance may differ depending on the depth of the worktop.

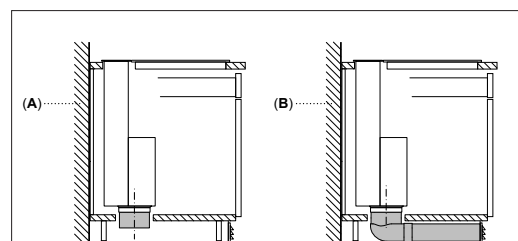
Example: Installation in a 90 cm base cabinet.

Front view:



Planning information recirculation mode.

In case of installation in front of a poorly insulated external wall with a U-value $>0.5 \text{ W}/(\text{m}^2\cdot\text{K})$, we recommend an air ducting up to the plinth panel in recirculation mode.

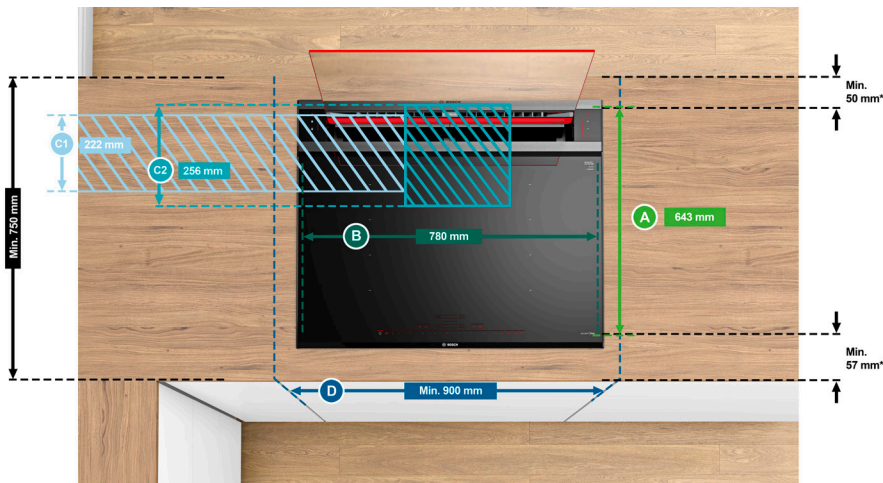


- A:** External wall – U-value $\leq 0.5 \text{ W}/(\text{m}^2\cdot\text{K})$
- B:** External wall – U-value $> 0.5 \text{ W}/(\text{m}^2\cdot\text{K})$

Installation information for exhaust system.

The following installation drawings show how to install the exhaust version of the Glass Draft Module. The Glass Draft Module is combined with a 80 cm wide cooktop. Both products come with a ComfortProfile frame.

Top view:



* Distance may differ depending on the depth of the worktop.

Example: Installation in a 90 cm base cabinet.

Front view:



When planning the ducting parts,
please consider the furniture legs.

Specification.



Series 8 | DDW88MM66

80cm Downdraft Hood

Design

- Glass
- Touch select control
- Decorative LED illumination

Performance

- Exhaust or recirculation mode
- Max. extraction rate according to EN 61591: 775 m³/h

Features

- EcoSilence Drive™ motor
- 3 speeds + 2 intensive power settings
- PerfectAir sensor
- Metal grease filter, dishwasher safe
- Guided Air option
- Delay shut-off: 10 mins
- Saturation display for metal grease filter and activated charcoal filter
- HomeConnect

Technical Information

- Max normal use noise level: 62 dB(A)
- Average annual energy consumption: 36.9 kWh/year
- Diameter pipe: 150 mm

Dimensions

- Product dimensions (H x W x D): 709 x 816 x 140 mm
- Cut out dimensions (W x D): 780mm x 125 mm

Accessories

- 1 x Clean Air Plus Recirculation Kit (DSZ1WW1I6)
- 1 x Adapter duct, Ø 150 mm, 90 °, round-flat (HEZ9VDSI1)
- 1 x Flat duct 500mm (HEZ9VDSM1)
- 1 x 150mm Connector sleeve, female (HEZ9VDSS1)
- Optional: DSZ8WW1Y2 (Mounting kit for seamless installation of 2 appliances in one worktop cut-out)

Dimensional drawings for installations.

A: ≥ 20 mm between the Guided Air suction area and a cabinet wall

B: ≥ 60 mm for air recirculation
 ≥ 100 mm for air extraction with ducting in the plinth

C: Motor unit must always be accessible

Combination with electric hob

Combination with gas hob is not possible

To prevent power loss, observe the following:

- Do not install upper cabinets above the appliance
- Clearance of open shelf elements above the appliance min. 650 mm (recommended)
- Left/right clearance between appliance and wall/adjacent upper cabinet min. 500 mm
- Clearance between appliance frame and wall min. 50 mm

Seamless installation (Special accessory required)

A: Worktop overhang protruding beyond unit carcass

B: ≥ 20 mm between the Guided Air suction area and a cabinet wall

C: ≥ 60 mm for air recirculation
 ≥ 100 mm for air extraction with ducting in the plinth

D: Motor unit must always be accessible

Combination with electric hob Seamless installation

A: Worktop overhang protruding beyond unit carcass

Combination with gas hob is not possible

To prevent power loss, observe the following:

- Do not install upper cabinets above the appliance
- Clearance of open shelf elements above the appliance min. 650 mm (recommended)
- Left/right clearance between appliance and wall/adjacent upper cabinet min. 500 mm
- Clearance between appliance frame and wall min. 50 mm

C

A: Installation of motor unit on front/rear or offset laterally with max. 3 mm clearance (special accessory required)

Motor unit must always be accessible

B: 5.5 mm

Measurements in mm

Accessory: Remote motor installation kit.

A: Access to the complete cover must be ensured even after installation.
Cover can be installed on the front or the rear from the appliance.

Seamless installation (Special accessory required)

A: Worktop overhang protruding beyond unit carcass
B: ≥ 20 mm between the Guided Air suction area and a cabinet wall
C: Cover must always be accessible

Installation as an example

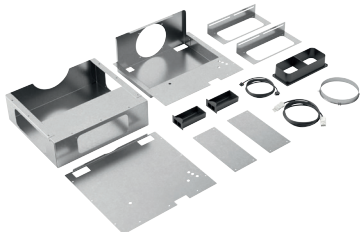
A: Cover must always be accessible
B: Clearance between motor unit and appliance max. 3 m
Motor unit must always be accessible

A: Cover must always be accessible
B: Clearance between motor unit and appliance max. 3 m
Motor unit must always be accessible

A: Cover must always be accessible
B: Clearance between motor unit and appliance max. 3 m
Motor unit must always be accessible

Measurements in mm

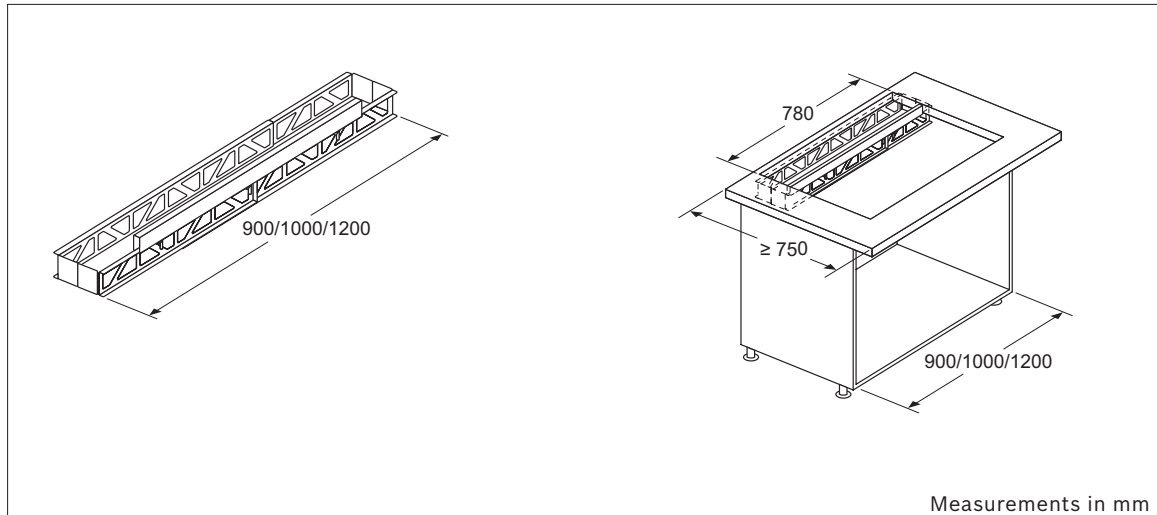
DSZ1WW1M1: Remote motor installation kit
- up to 3m away from the ventilation unit
(purchased separately)



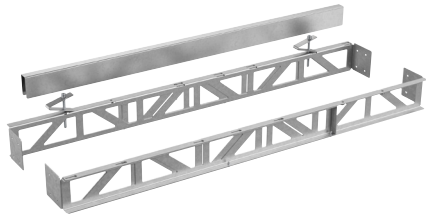
For more information concerning the remote blower installation please have a look at:



Accessory: Installation kit.



**DSZ8WW1Y2 – Connecting strip accessory
for seamless installation
(purchased separately)**



*For more information
concerning seamless
installation please have
a look at:*





WEBSITE

 | www.bosch-home.com.my

More privileges when you register as myBosch member

FOR MORE INFORMATION

CUSTOMER SERVICE

 | +603 7950 9338

 | bshpet.service@bshg.com

Whilst every care has been taken in the preparation of this publication, Bosch does not warrant the accuracy or completeness of the information in this publication and Bosch reserves the right to alter specifications without notice. To the extent permitted by law, Bosch excludes all liability, including negligence, for any loss incurred in reliance on the contents of this publication.