

Invented for life



**BOSCH**

# Functional Elegance For All Your Refrigeration Needs.

Introducing the refrigeration range from Bosch.





# Contents

<b>3</b>	Introduction
<b>6</b>	Features Unique to Bosch
<b>10</b>	Smart Organisation for Your Food
<b>11</b>	Ergonomic Bottom Freezer Design
<b>13</b>	Range Information
<b>17</b>	Technical Diagrams

# Bosch in every detail. German engineered.



Every detail of every appliance has been carefully designed, produced and tested by our engineers to fully satisfy the highest standards in quality, performance and convenience. The result is cutting-edge technology, timeless design and remarkable ease of use.





# Why choose Bosch?

## Proven Quality

Bosch appliances offer premium quality, advanced technology, ease of operation and outstanding German made and engineered technology. These attributes have earned us many national and international accolades, such as the reddot Design Award, the iF product design award and other endorsements, year after year.



**reddot**  
International  
Design Award



**product  
design  
award**

## Top Performance

What drives us every day is our desire to improve. We strive to make the best even better, by developing functional, durable and energy-efficient innovations that surpass all expectations.

## Maximum Convenience

Bosch is dedicated to making your life easier. Our refrigerators are packed with great ideas, features and technology to make food storage better and easier than ever.



With Home Connect function in selected models, you can easily control and monitor your home appliances wherever you are.

# We've discovered the secret of freshness for your food.

The answer to better refrigeration storage under the most optimal conditions? VitaFresh freshness systems. With low temperatures and the right humidity levels, they make sure your food remains fresh for longer – so you can enjoy them for a longer period of time.

## Storage Guide\*



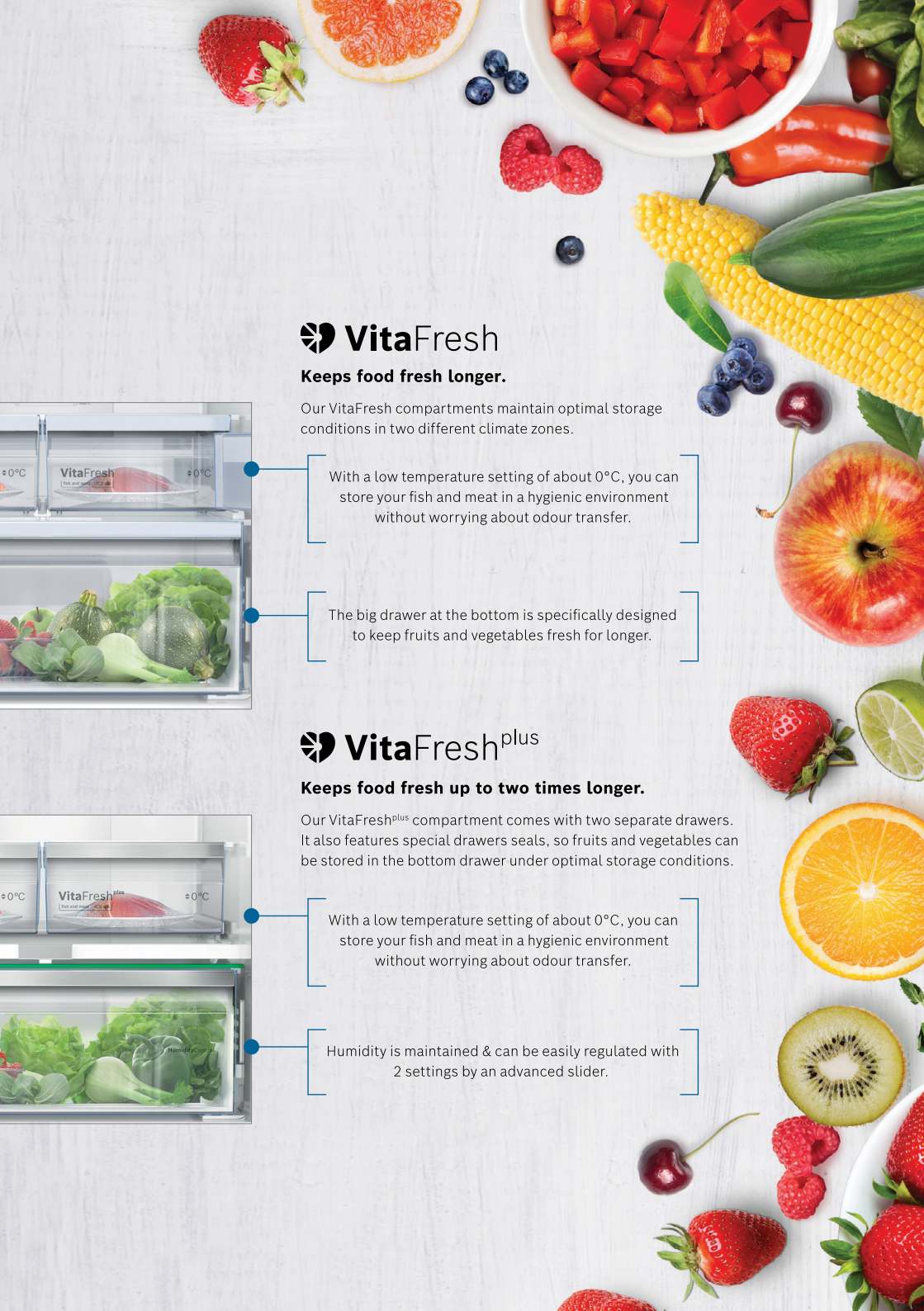
Vegetables	VitaFresh	VitaFresh <sup>plus</sup>
Asparagus	up to 5 days	up to 10 days
Broccoli	up to 8 days	up to 10 days
Cabbage	up to 30 days	up to 50 days
Carrots	up to 50 days	up to 60 days
Celery	up to 20 days	up to 23 days
Leek	up to 17 days	up to 20 days
Lettuce	up to 10 days	up to 14 days
Mushrooms	up to 2 days	up to 3 days
Spinach	up to 3 days	up to 4 days



Fruits	VitaFresh	VitaFresh <sup>plus</sup>
Apples	up to 70 days	up to 120 days
Apricots	up to 10 days	up to 14 days
Blackberries	up to 3 days	up to 3 days
Cherries	up to 10 days	up to 15 days
Grapes	up to 15 days	up to 20 days
Kiwi	up to 20 days	up to 30 days
Peaches	up to 7 days	up to 10 days
Plum	up to 7 days	up to 8 days
Raspberries	up to 3 days	up to 3 days
Strawberries	up to 3 days	up to 4 days

\* Actual storage life of fruits and vegetables may vary depending on the state of the food item when bought, type of storage compartment and different test and storage conditions.





## VitaFresh

### **Keeps food fresh longer.**

Our VitaFresh compartments maintain optimal storage conditions in two different climate zones.



With a low temperature setting of about 0°C, you can store your fish and meat in a hygienic environment without worrying about odour transfer.

The big drawer at the bottom is specifically designed to keep fruits and vegetables fresh for longer.

## VitaFresh<sup>plus</sup>

### **Keeps food fresh up to two times longer.**

Our VitaFresh<sup>plus</sup> compartment comes with two separate drawers. It also features special drawer seals, so fruits and vegetables can be stored in the bottom drawer under optimal storage conditions.



With a low temperature setting of about 0°C, you can store your fish and meat in a hygienic environment without worrying about odour transfer.

Humidity is maintained & can be easily regulated with 2 settings by an advanced slider.



# Freshness and hygiene.



## **SuperCooling: Lowers temperature for super quick chilling**

With SuperCooling activated, food that you have just placed into the fridge cools quickly. SuperCooling switches off automatically after 6 hours to save energy.



## **SuperFreezing: Fast freezing for any amount of food**

SuperFreezing prevents frozen food items from defrosting as you add new food items into the freezer. Once the set temperature is reached, SuperFreezing switches off automatically to prevent energy wastage.



## **AirFresh Filter: Prevents any odour transfer of food**

Some foods stored in your fridge can overpower others, creating an unpleasant mix of smells and flavours. Our AirFresh Filter minimises odour transfer from one food to another, retaining the natural flavour of your produce.



## **Multi Airflow System: Food stays fresh longer**

Greatly improves circulation of air around the fridge, regulating temperature and humidity levels to help your food retain their flavour and freshness.



# Flexible storage space.



## **EasyAccess shelf: Extendable shelves for perfect access to items at the back**

The fully extendable safety glass shelves can be pulled out for easy access and storage of food items. You will get a clear view of all food items – even those at the back of the fridge.



## **BigBox: Lots of space for huge frozen items**

An extra-large frozen food drawer for practical stacking of frozen food containers or large frozen items like cakes or pizzas. Whether you have to store huge quantities of food for your house party or freeze a large turkey, you will find enough space for large frozen food items.

# Improved energy efficiency\* with Bosch Variolnverter.



Unlike a conventional compressor that operates consistently at a single speed, the Bosch Variolnverter compressor adjusts its speed efficiently according to the surrounding conditions and refrigerator loads. This helps to optimize the cooling conditions for you to enjoy improved energy efficiency and freshness at the same time.

- **Fast Cooling**

Variolnverter reaches the desired temperature faster than conventional compressors with its ability to adjust and optimize the compressor speed continuously.

- **Low Noise**

Variolnverter lets you and your family enjoy a quiet living environment with its silent performance.

\*Based on test requirements between similar Bosch bottom freezer models.  
Energy savings may vary depending on test conditions and models.



# Smart organisation for your food.

## Glass Shelf

Cheese cake  
Smoked foods  
Pâtés

## Glass Shelf

Cakes and pastries  
Cheese  
Condiments  
Milk and yogurt  
Ready-to-eat meals

## VitaFresh

Vegetables  
Fruits

## VitaFresh

Fresh fish and seafood  
Fresh meat  
Ready-to-eat meals

## Freezer

Ice cream and sorbet  
Fresh fish and seafood  
Fresh meat  
Ready-to-eat meals

## Upper Door Bin

Butter

## Door Bin

Eggs  
Condiments

## Bottle Shelf & Gallon Bin

Juices and other  
beverages  
Daily drinks



# Thoughtfully designed to take care of your back.

Our bottom freezers are ergonomically designed for easy access. As common food items are stored in the main compartment at eye level, you no longer have to bend your back frequently for your food.

With Bosch bottom freezer refrigerators, healthy living is well within reach — simply open the door.

## DID YOU **KNOW** ?

### Top Freezer Refrigerators



You will need to bend

**80%**

of the time to reach frequently accessed food items.

### Bosch Bottom Freezer



You only bend

**20%**

of the time to reach frequently accessed food items as they are stored in the main compartment at eye level.





#### **For Top Fridge Compartment**

- Reach for milk, vegetables, fruits, fish and meat easily without having to bend down frequently
- Allows easy cleaning of drawers

#### **For Bottom Freezer Compartment**

- Compartmentalised drawers for easy sorting of food items
- Removable drawers for easy cleaning



**Series 4 | KGN56X14MO**  
**Freestanding Bottom Freezer**

- Design**
- Inox - easy clean
- Performance**
- Total net capacity: 505 litres
  - Fridge net capacity: 400 litres
  - Freezer net capacity: 105 litres
- Features**
- VariInverter
  - Multi Airflow System
  - AirFresh Filter
  - VitaFresh 40°C: fish and meat
  - VitaFresh with humidity control: vegetables and fruits
  - BigBox
  - Eco mode
  - Childproof lock
  - SuperCooling and SuperFreezing
  - LED lights in refrigerator area
  - Reversible door hinge
- Technical Information**
- Annual energy consumption: 357 kwh
- Dimensions**
- Product dimension (H x W x D): 1930 x 700 x 800 mm

**Series 6 | KGN86A14MO**  
**Freestanding Bottom Freezer**

- Design**
- Inox - easy clean
- Performance**
- Total net capacity: 619 litres
  - Fridge net capacity: 479 litres
  - Freezer net capacity: 140 litres
- Features**
- VariInverter
  - Multi Airflow System
  - AirFresh Filter
  - VitaFresh<sup>plus</sup> 40°C: fish and meat
  - VitaFresh<sup>plus</sup> with humidity control: vegetables and fruit
  - BigBox
  - Fresh mode
  - Eco mode and Vacation mode
  - Childproof lock
  - SuperCooling and SuperFreezing
  - LED lights in refrigerator area
  - Reversible door hinge
- Technical Information**
- Annual energy consumption: 442 kwh
- Dimensions**
- Product dimension (H x W x D): 1860 x 860 x 810 mm



#### Series 4 | KAN93VIFPG Freestanding Side-by-Side

- |                              |   |
|------------------------------|---|
| <b>Design</b>                | <ul style="list-style-type: none"> <li>• Inox - easy clean</li> </ul>   |
| <b>Performance</b>           | <ul style="list-style-type: none"> <li>• Total net capacity: 560 litres</li> <li>• Fridge net capacity: 371 litres</li> <li>• Freezer net capacity: 189 litres</li> </ul>   |
| <b>Features</b>              | <ul style="list-style-type: none"> <li>• VariolInverter</li> <li>• Multi Airflow System</li> <li>• 2 fruit and vegetable drawers on telescopic rails</li> <li>• Vacation mode</li> <li>• Childproof lock</li> <li>• SuperCooling and SuperFreezing</li> <li>• LED lights</li> </ul> |
| <b>Technical Information</b> | <ul style="list-style-type: none"> <li>• Annual energy consumption: 363 kwh</li> </ul>  |
| <b>Dimensions</b>            | <ul style="list-style-type: none"> <li>• Product dimension (H x W x D): 1787 x 908 x 707 mm</li> </ul>  |



#### Series 6 | KFN96APEAG Freestanding 4-Door French Bottom Freezer

- |                              |  |
|------------------------------|--|
| <b>Design</b>                | <ul style="list-style-type: none"> <li>• Inox - easy clean</li> </ul>  |
| <b>Performance</b>           | <ul style="list-style-type: none"> <li>• Total net capacity: 605 litres</li> <li>• Fridge net capacity: 405 litres</li> <li>• Freezer net capacity: 200 litres</li> </ul>  |
| <b>Features</b>              | <ul style="list-style-type: none"> <li>• VariolInverter</li> <li>• Metal Backwall with Multi Airflow System</li> <li>• VitaFresh «0°C»: fish and meat</li> <li>• VitaFresh with humidity control: vegetables and fruit</li> <li>• BigBox</li> <li>• Eco mode</li> <li>• Sabbath mode</li> <li>• Childproof lock</li> <li>• SuperCooling and SuperFreezing</li> <li>• LED lights in refrigerator area</li> <li>• HomeConnect</li> </ul> |
| <b>Technical Information</b> | <ul style="list-style-type: none"> <li>• Annual energy consumption: 333 kwh</li> </ul>   |
| <b>Dimensions</b>            | <ul style="list-style-type: none"> <li>• Product dimension (H x W x D): 1830 x 910 x 731 mm</li> </ul>   |



**Series 8 | KSW38940**  
**Freestanding Wine Cooler**

- |                              |   |
|------------------------------|---|
| <b>Design</b>                | <ul style="list-style-type: none"><li>• Aluminium</li></ul>   |
| <b>Performance</b>           | <ul style="list-style-type: none"><li>• Total net capacity: 368 litres</li><li>• Max 0.75 litres bottle storage: 197 bottles</li></ul>  |
| <b>Features</b>              | <ul style="list-style-type: none"><li>• 6 height adjustable wooden grid shelves</li><li>• Carbon filter</li><li>• Double glazed door with UV protected tinted glass</li><li>• Digital temperature controls (adjustable from +5°C to +22°C)</li><li>• 2 temperature zones for storage of various wine</li><li>• LED lights (manual switch)</li><li>• Reversible door hinge</li></ul> |
| <b>Technical Information</b> | <ul style="list-style-type: none"><li>• Annual energy consumption: 212 kwh</li></ul>  |
| <b>Dimensions</b>            | <ul style="list-style-type: none"><li>• Product dimension (H x W x D): 1860 x 595 x 600 mm</li></ul>  |

**Series 6 | KIN86AF300**  
**Built-in Bottom Freezer**

- |                              |  |
|------------------------------|--|
| <b>Design</b>                | <ul style="list-style-type: none"><li>• Built-in</li></ul>   |
| <b>Performance</b>           | <ul style="list-style-type: none"><li>• Total net capacity: 254 litres</li><li>• Fridge net capacity: 187 litres</li><li>• Freezer net capacity: 67 litres</li></ul>   |
| <b>Features</b>              | <ul style="list-style-type: none"><li>• VarioInverter</li><li>• Power Ventilation - Circulates cool air and moisture evenly within the fridge compartment to keep your food fresh</li><li>• VitaFresh<sup>plus</sup> with humidity control: vegetables and fruit</li><li>• BigBox</li><li>• Vacation mode</li><li>• SuperCooling and SuperFreezing</li><li>• LED lights in refrigerator area</li><li>• Reversible door hinge</li></ul> |
| <b>Technical Information</b> | <ul style="list-style-type: none"><li>• Annual energy consumption: 325 kwh</li><li>• NoFrost</li></ul>   |
| <b>Dimensions</b>            | <ul style="list-style-type: none"><li>• Product dimension (H x W x D): 1772 x 558 x 545 mm</li><li>• Cut out dimension (H x W x D): 1775 x 560 x 550 mm</li></ul>  |





### Power Ventilation

Circulates cool air and moisture evenly within the fridge compartment to keep your food fresh

### NoFrost

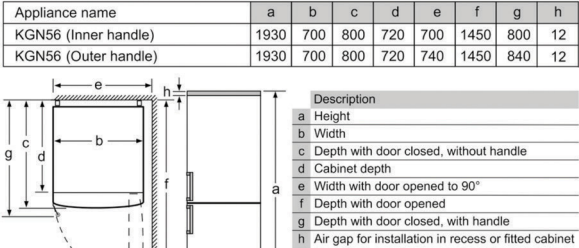
Prevents ice build-up to save you the hassle of manually defrosting your freezer

# Technical Diagrams

All descriptions and technical diagrams are intended as a guide only. For additional technical information, full dimensional and installation details, please refer to the instruction and installation manuals supplied with the appliance.

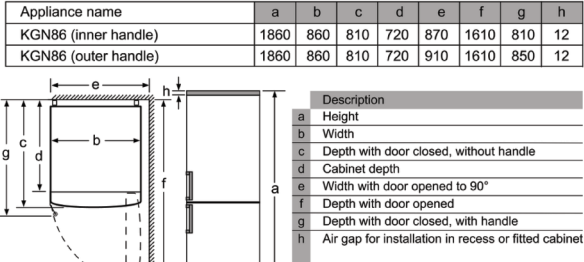
## Bottom Freezers

KGN56XI4MO



All measurements in mm.

KGN86AI4MO



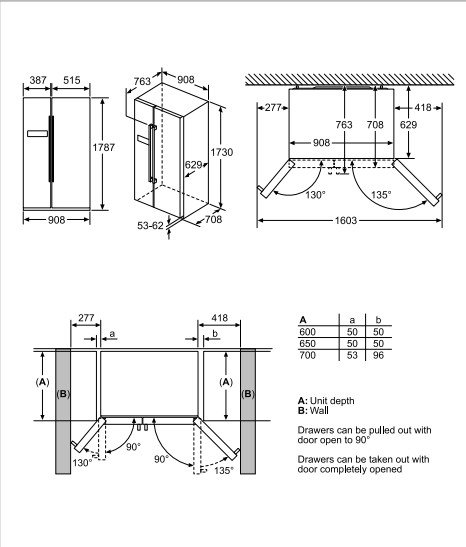
All measurements in mm.

# Technical Diagrams

All descriptions and technical diagrams are intended as a guide only. For additional technical information, full dimensional and installation details, please refer to the instruction and installation manuals supplied with the appliance.

## Side-by-Side Refrigerator

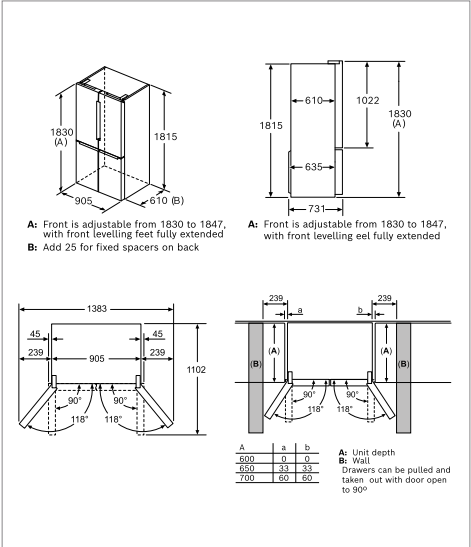
KAN93VIFPG



All measurements in mm.

## 4-Door French Bottom Freezer

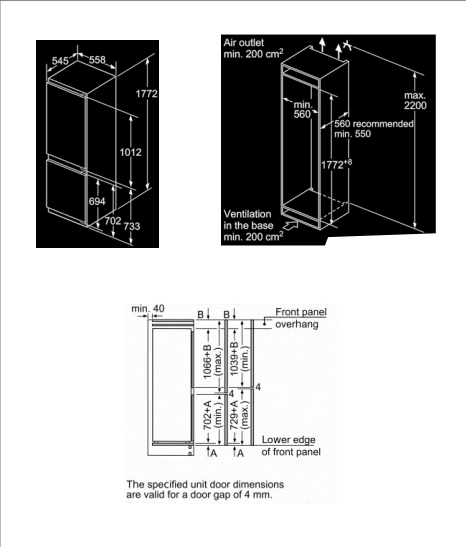
KFN96APEAG



All measurements in mm.

## Built-in Bottom Freezer

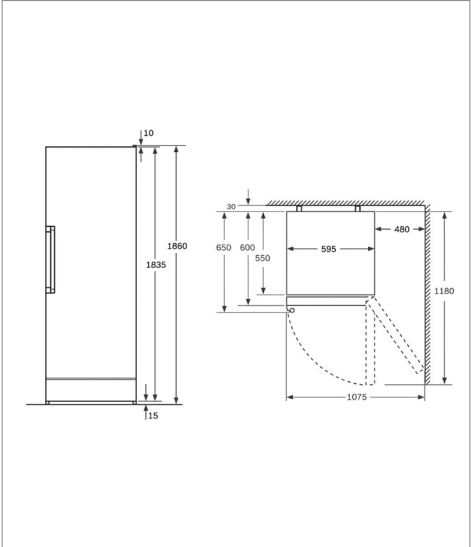
KIN86AF300



All measurements in mm.

## Wine Cooler

KSW38940



All measurements in mm.

## Notes

[illegible]



## Notes

[illegible]

# Total Peace Of Mind With Total Appliance Care Solutions

Enhance your Bosch  
appliance user experience with  
**three care solutions**  
uniquely catered for you.



## Extended Warranty

For a peace of mind protection, you can choose a plan to cover your appliances for an additional 1 to 3 years. With the extended warranty, your appliance will be repaired FREE of charge even after the 2-year manufacturer's warranty expires.



## Cleaning & Care Kits

Specialty formulated by Bosch to help maximise the lifespan and effectiveness of essential Bosch home and kitchen appliances - washing machine, dishwasher, oven and hood & hob.



## Maintenance Care Plan

Our team offers professional cleaning and maintenance services delivered right to your doorstep. With several package plans ranging from Basic to Holistic customised to your needs.



Scan QR code to find out more  
about and apply for your own  
BOSCH Extended Services.

To find out more  
about BOSCH  
Home Appliances:



Bosch Home MY



boschhomeMY



boschhomemy








#### WEBSITE

 | [www.bosch-home.com.my](http://www.bosch-home.com.my)

More privileges when you register as  
myBosch member

#### FOR MORE INFORMATION

##### CUSTOMER SERVICE

 | +603 7950 9338  
 | +603 7955 5103  
 | [bshpet.service@bshg.com](mailto:bshpet.service@bshg.com)

Whilst every care has been taken in the preparation of this publication, Bosch does not warrant the accuracy or completeness of the information in this publication and Bosch reserves the right to alter specifications without notice. To the extent permitted by law, Bosch excludes all liability, including negligence, for any loss incurred in reliance on the contents of this publication.

©Copyright 2023 by BSH Home Appliances Sdn. Bhd. Company registration no. 711053-H. Printed in Malaysia.