



**BOSCH**

Invented for life

# The Bosch 2-in-1 cooktops with integrated ventilation.

Open space, maximum flexibility.

Edition 2022



**Unducted  
recirculation  
kit included**  
ready for  
installation

See inside for digital copy

# Contents

<b>Introduction</b>	<b>4–5</b>
<b>Cooktop features</b>	<b>6–7</b>
<b>Ventilation features</b>	<b>8–9</b>
<b>More functions</b>	<b>11</b>
<b>Specifications and design planning</b>	<b>12–15</b>
<b>Installation options video</b>	<b>15</b>
<b>Unducted installation / ducted extraction</b>	<b>16</b>
<b>Ducted installation options</b>	<b>17</b>
<b>Ducting elements</b>	<b>18–20</b>
<b>Installation notes</b>	<b>21–25</b>
Notes on 60cm wide base cabinets	21
Notes on drawer depths and benchtop depths	22
Notes on benchtop thickness	22
Notes on immersion depths and kitchen matrix systems	23
Notes on ducted extraction planning	24–25
<b>Dimensional drawings</b>	<b>26–31</b>
Integrated ventilation cooktops	26–27
Installation configurations	27–29
Installation accessories and ducting elements	30–31
<b>Installation instructions</b>	<b>32–33</b>
<b>Typical planning scenarios for ducted installation</b>	<b>34–35</b>

Scan here to  
download your  
digital copy





\*Source: Euromonitor, volume sales, 2021



The 2-in-1 cooktops with integrated ventilation

For some, it's a **cooktop**  
that ventilates perfectly.

For others, it's a **rangehood**  
that also cooks perfectly.

The perfect kitchen should allow you to plan as you like, have unrestricted cooking space and easily entertain guests. For greater freedom and flexibility in your ideal kitchen, Bosch offers 2-in-1 cooktops with integrated ventilation. This combines the latest technologies of our **induction cooktops** and **rangehoods** into a **single appliance**.



### Unique kitchen design with all the planning freedom you need.

Features of a cooktop and rangehood are combined by integrating ventilation into the cooking surface. This offers maximum flexibility when it comes to designing your kitchen. It is the ideal cooktop for kitchens with an island bench, slanted ceiling (where a rangehood is not practical) and open kitchen layouts. Experience a new level of freedom in your home when planning your kitchen and enjoy the convenience of preparing your favourite dishes while facing and chatting with your guests.



#### Open layout.

The 2-in-1 cooktops with integrated ventilation offer brand-new design options for your kitchen. In place of a rangehood, you can now install lights, pictures, or shelves above your cooktop. Without a rangehood, small kitchens also look much larger – and without an island rangehood – open-plan kitchens look even more spacious.



#### Flexible planning.

Whether installed beneath a window or slanted ceiling, the 2-in-1 cooktops with integrated ventilation from Bosch offer you brand new options when planning your kitchen. Thanks to the ventilation module's compact size, you can add drawers or a cabinet below for additional storage space.



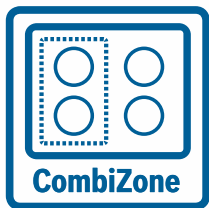
#### Sleek finish.

For even greater movement and placement of your cookware, the glass strip in the centre allows for support of pots and pans in between cooking. The newly designed sleek integrated air inlet takes up minimal space on your cooktop.



## Cooktop features

# The best features of cooktops in the 2-in-1 range.



### CombiZone

If you need more space for a long piece of cookware, such as a roaster, or Teppan Yaki plate, Bosch has the answer. With CombiZone you can combine two individual cooking zones into one at the touch of a button.



### DirectSelect 1.0 touch control.

Easy to understand and even easier to use, the intuitive operation allows you to select cooking zones with ease and directly set the desired temperature for each zone. You can also adjust the ventilation level manually or set it to automatic.

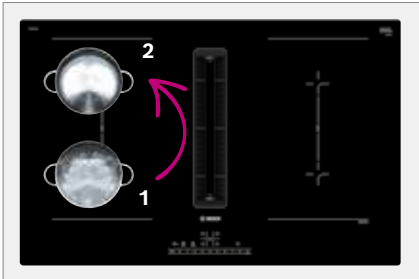


### QuickStart.

For additional convenience the QuickStart function detects where you have placed the pot and automatically displays the corresponding cooking zone. You can get started straight away and select the desired cooking level for your pot without delay.







### MoveMode.

When your recipe requires you to switch from boil to simmer at just the right moment, MoveMode is there when you need it. Switch from level 9 to level 1 by simply sliding your pot. MoveMode lets you move seamlessly from your first high-powered cooking task to the next in an instant.

### PowerBoost.

The PowerBoost function gives you that extra boost by increasing the power level of a selected zone. This means you can heat up large quantities of water faster than the highest heat setting.



## Ventilation features

# The best features of rangehoods in the 2-in-1 range.

The Bosch 2-in-1 cooktops with integrated ventilation allow you to fully enjoy your open-plan kitchen while you cook. The extraction noise is no longer at ear level as a lower extraction setting is required as the ventilation is closer to the food, resulting in quieter operation. The module works with extreme efficiency by extracting steam and odours directly from pots and pans, while keeping the power level high and noise level low. You won't be bothered by fogged glasses or loud extractor noise; instead, you can attend to your guests in peace and quiet while you cook.

**AutoOn.**

Air extraction automatically begins on a medium level once a cooking zone is turned on.

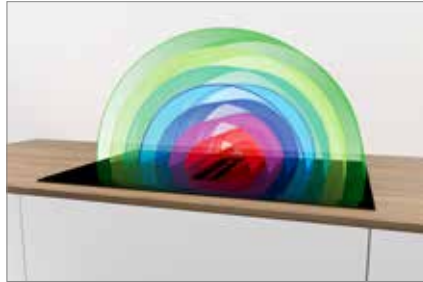






#### **9+2 power levels.**

The integrated ventilation has nine power levels and two intensive settings, which provide the optimal extraction rate for every cooking situation – from gentle simmering to intensive frying.



#### **Superior technology.**

Strong speed air extraction is generated directly at the ventilation module and also above the cooktop. As a result, any steam generated will reduce the grease and odour particles on kitchen surfaces. The highest speed setting creates an approx. 65cm high suction bell, perfect when cooking with high pots.



#### **The EcoSilence Drive motor.**

##### **For quiet and efficient operation.**

With the brushless EcoSilence Drive, friction and wear do not occur as it is driven by a permanent magnet. This means your ventilation module has an extraordinarily long service life, extreme efficiency, and low noise. Optimised air flow inside the ventilation module reduces operating noise – even at full power.





## More functions

# Additional features of integrated ventilation.

Our cooktops with integrated ventilation are equipped with everything you need to reduce your effort and increase your enjoyment of cooking – which, of course, includes maximum efficiency and quiet operation.



### Whisper quiet.

With a noise level of just 42/69 dB\* the integrated ventilation module is extremely quiet, while powerful and highly efficient with a maximum extraction rate of 622m<sup>3</sup>/h.\*\*



### CleanAir filter.

If installing in recirculation mode, four special active carbon filters are used to guarantee absorption of odours – so that the smell of your food does not fill the entire kitchen. To keep your kitchen smelling fresh, it is recommended that you replace the CleanAir filters at least once a year – depending on your cooking habits (refer to page 13 or 18 to order online). To help you remember, the saturation indicator prompts you when the CleanAir filters are saturated.



### Say goodbye to uncomfortable cleaning and hello to dishwasher safe parts.

The extractor module's highly effective grease filter system efficiently removes grease and other solid particles for noticeably cleaner air in the kitchen. The stainless steel grease filters, with 12 layers each, are inside a cassette made out of heat-resistant, dishwasher safe material. The top strip of the inlet grid can be used as a handle bar to grab and easily remove the unit for cleaning. Simply place the module into the dishwasher for easy cleaning.



### Even if something goes wrong, everything turns out alright.

The integrated ventilation module is well-prepared for every mishap, large or small. It has a triple overflow protection to prevent liquids from entering the system. If liquid does spill into the module, it's diverted to safety reservoirs that can hold up to 900ml collectively. This ensures optimal protection of the appliance. If liquid exceeding this amount is spilt, the blower and motor of the ventilation system are watertight and water can evaporate with humidity.

\* Normal setting min/max.

\*\* Measured in ducted extraction mode (according to EN 61591), intensive setting.



## Make room for a little more freedom in your kitchen.

The cooktops with integrated ventilation don't just provide you with more headroom while cooking or more freedom in planning your kitchen, their compact design also leaves room for extra storage space for pots and pans – directly under your cooktop.



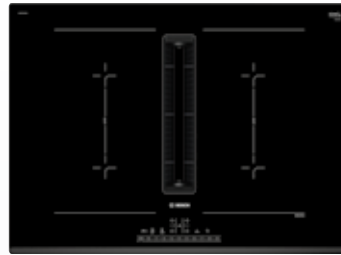
Just like a regular cooktop they are installed in your benchtop in accordance with the usual specifications. At an installed depth of about 22.3cm, only the top drawer needs to be replaced by a panel. There is no need to shorten drawers or shelves, which leaves you sufficient room for storing kitchen utensils.

With our new 70cm wide cooktop, for the first time, cabinet configuration planning can be achieved with 60cm wide base cabinets.

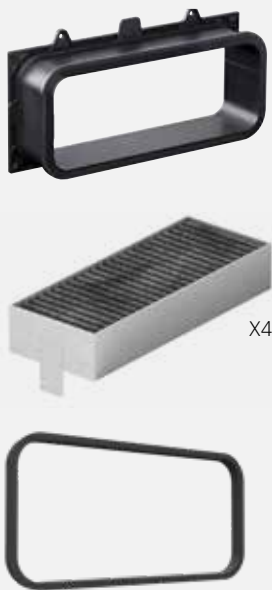




Scan for  
instruction manual



#### Installation accessories included with the appliance, suitable for unducted recirculation



#### Unducted Recirculation Kit

4 high-performance CleanAir odour filters with optimised odour reduction performance for cooking applications with complex odour molecules (e.g. fish). Lifetime of 360 hours of cooking (non-regenerative).

- ▶ A telescopic slider element with a self-gluing fixation frame to easily connect the appliance's air outlet with the cut-out in backpanel of the cabinetry.
- ▶ A sealing gasket to ensure air tightness, which can be attached on the telescopic slider or a male flat duct.

Replenishment filters can be ordered on the **Bosch Online Shop** using part number: 17004805 (set of four filters).

If you choose ducted installation,  
additional ducting elements will be  
required - (refer to pages 16–20.)

#### PVQ731F15E 70cm Induction cooktop with integrated ventilation

##### Heating functions

- ▶ 4 induction cooking zones:  
2 combinable zones 'CombiZone'  
for large pans
- ▶ 17 power levels
- ▶ PowerBoost for each zone

##### Design

- ▶ Black ceramic glass
- ▶ Bevelled front

##### Convenience

- ▶ Electronic DirectSelect 1.0 touch-control
- ▶ MoveMode: 2 automatic power levels
- ▶ Timer with automatic switch off for all zones
- ▶ QuickStart
- ▶ ReStart
- ▶ Automatic pan recognition sensor
- ▶ Energy consumption display

##### Cleaning

- ▶ WipeProtection pauses all settings for easy cleaning while cooking

##### Safety

- ▶ Automatic safety switch-off
- ▶ 2-stage residual heat indicators
- ▶ Childproof lock

##### Ventilation

- ▶ 622m<sup>3</sup>/h maximum extraction capacity
- ▶ Noise min./max. Normal Level: 42/69 dB
- ▶ 9 power settings + 2 intensive
- ▶ AutoOn
- ▶ Automatic run-on time 30 mins
- ▶ EcoSilence Drive brushless motor
- ▶ Dishwasher-safe metal grease filter
- ▶ Electronic filter saturation indicator
- ▶ Sleek air inlet grid, heat resistant, dishwasher safe

#### Dimensions (HxWxD)

223 x 710 x 522mm

#### Installation Dimensions

223 x 560 x 490mm

#### PVQ811F15E 80cm Induction cooktop with integrated ventilation

##### Heating functions

- ▶ 4 induction cooking zones:  
2 combinable zones 'CombiZone'  
for large pans
- ▶ 17 power levels
- ▶ PowerBoost for each zone

##### Design

- ▶ Black ceramic glass
- ▶ Frameless

##### Convenience

- ▶ Electronic DirectSelect 1.0 touch-control
- ▶ MoveMode: 2 automatic power levels
- ▶ Timer with automatic switch off for all zones
- ▶ QuickStart
- ▶ ReStart
- ▶ Automatic pan recognition sensor
- ▶ Energy consumption display

##### Cleaning

- ▶ WipeProtection pauses all settings for easy cleaning while cooking

##### Safety

- ▶ Automatic safety switch-off
- ▶ 2-stage residual heat indicators
- ▶ Childproof lock

##### Ventilation

- ▶ 622m<sup>3</sup>/h maximum extraction capacity
- ▶ Noise min./max. Normal Level: 42/69 dB
- ▶ 9 power settings + 2 intensive
- ▶ AutoOn
- ▶ Automatic run-on time 30 mins
- ▶ EcoSilence Drive brushless motor
- ▶ Dishwasher-safe metal grease filter
- ▶ Electronic filter saturation indicator
- ▶ Sleek air inlet grid, heat resistant, dishwasher safe

#### Dimensions (HxWxD)

223 x 802 x 522mm

#### Installation Dimensions

223 x 750 x 490mm

# Design your kitchen just how you like.

The new cooktops with integrated ventilation know no limits. Whether you're looking for a space-saving wall design or an open-plan living concept with an island bench, the possibilities are endless and the fit is seamless.

All cooktops with integrated ventilation are available in both ducted and recirculation extraction configurations. This means that however you'd like to plan your kitchen design, there is an installation solution to suit your needs.

## Wall design.



## Island bench design.





# Installation options.

## Planning to install your venting cooktop in recirculation mode against an exterior or interior wall?



Next to interior walls and for island designs, all recirculating configurations are possible.

When installed in an island bench or against an interior wall unducted recirculation configuration is recommended.



When installed against an exterior/outside wall, a partly or fully ducted recirculation configuration is recommended. Unducted recirculation extraction is not recommended against an outside wall due to potential condensation risk.

Exception: only if the exterior wall is very well-insulated ( $\mu < 0.5 \text{ W/m}^2\text{°C}$ ) would an unducted recirculation installation be possible.



Scan the QR code to watch the video of the various installation options\*.



\*The video is intended for professional installers use only.

# A wide-range of installation accessory options allow for every market-standard configuration.

The appliance is equipped with the accessory for the most common type of installation: **Unducted recirculation**. For other types of installation, we offer accessory kits that can be ordered separately.

## Option 1: Unducted recirculation

Includes easy recirculation kit for unducted recirculation



**Includes easy recirculation kit for unducted recirculation in an island bench or against an internal wall.**

This installation kit for ductless recirculation extraction inside the kitchen, such as an island bench setting, enables very convenient planning and quick installation.

Includes:

- ▶ 4 high-performance CleanAir odour filters with optimised odour reduction performance for cooking applications with complex odour molecules (e.g. fish). Large scale filter surfaces with high odour reduction capabilities and a lifetime of 360 hours of cooking (non-regenerative). Filters are additionally optimised for low-noise with specially designed psycho-acoustics.
- ▶ A telescopic slider element with a self-gluing fixation frame to easily connect the appliance's air outlet with the cut-out in back panel of the cabinetry.
- ▶ A sealing gasket to ensure air tightness, which can be attached on the telescopic slider or a male flat duct.

To ensure adequate air flow, a vent in the kickplate greater than 400cm<sup>2</sup> should be made (return-flow aperture of  $\geq 400\text{cm}^2$ ).

For ideal ventilation in this configuration, it is recommended to have a vertical aperture of 50mm behind the back panel of the cabinetry, with a minimum of 25mm required.

**No additional ducting elements required.**

**When planning a recirculated extraction scenario against an external wall, it is recommended to opt for partly or fully ducted recirculation planning.**

## Option 2: Ducted exhaust extraction

Starter set of ducting elements for ducted exhaust extraction



**HEZ9VDKE1 for worktop depths  $\geq 60\text{cm}$**



Includes:

- ▶ 4 high-performance, low-noise acoustic filters for significantly lower noise and strongly improved psycho-acoustics.
- ▶ Vertical 90° "S" bow flat duct element (male). Suitable for worktop depths from 60cm.
- ▶ Connector sleeve (female) to combine male flat duct elements.
- ▶ Straight tube element (male, 500mm).

Further ducting elements must be ordered additionally, according to the customised planning.

Please call the customer service team on 1300 369 744 to order additional flat duct elements.

## Option 3: Ducted recirculation

### Partly ducted Recirculation



### HEZ9VDKR0 for worktop depths $\geq 70\text{cm}$



**Set of ducting elements for partly ducted recirculation extraction. For partly or fully ducted recirculation extraction against an external wall we recommend the use of this basic kit.**

Includes:

- ▶ 2x Vertical 90° "L" bow flat duct element (male). Suitable for worktop depths  $\geq 70\text{cm}$ .
- ▶ 3x Connector sleeve (female) to combine male flat duct elements.
- ▶ Straight tube element (male, 500mm).
- ▶ Diffusor element that can be directly connected to the flat duct elements and that spreads the outflowing air in the plinth area for partly ducted recirculation configurations.

The elements enable installations in worktop heights up to 960mm. To ensure adequate air flow, a vent in the kickplate greater than 400cm<sup>2</sup> should be made (return-flow aperture of  $\geq 400\text{cm}^2$ ).

### Fully ducted Recirculation



### HEZ9VDKR0 for worktop depths $\geq 70\text{cm}$



+



**For fully ducted recirculation, the above kit (HEZ9VDKR0) can be used as a starter kit. A straight tube and an additional connector sleeve are required to reach the kick panel.**

For best results, the diffusor can be directly connected to the kickplate vent with adhesive tape.

Includes:

- ▶ Additional straight tube (either 500mm or 1000mm depending on benchtop depth) duct elements.
- ▶ Additional connector sleeve.

#### Part numbers

1000mm tube: 17005345

500mm tube: 17005030

Sleeve: 17005038

### Individual Configuration



Flat-duct accessory elements can be ordered individually by calling the Bosch customer service team on 1300 369 744, enabling customised planning. To view all available ducting elements, visit [www.bosch-home.com.au/shop](http://www.bosch-home.com.au/shop)



## Ducting elements

# Customised individual planning for ducting installation.

When installing the integrated cooktop in either a **fully ducted** configuration or a **partly/fully ducted recirculation** configuration, **additional ducting elements are required.**

## Flat-duct elements from Bosch.



The new Bosch flat duct system offers maximum flow-rates and flexibility combined with ease of installation even in complex situations.

The simple basic principle: "Male" parts can be connected easily and air tightly by a two-part, clip-on, "female" connector sleeve element. The integrated seal eliminates the need for the usual adhesive (duct) tapes. The connector sleeves give the system a clear advantage even in complex situations to be able to connect duct elements quickly and easily. Straight elements are also easy to cut to size.



The system's elements are designed and optimised for ducting in combination with all offered Bosch ventilation solutions. Aerodynamic optimisation provides highest flow rates and ensures ideal appliance performances even with longer ducting.

The materials used in all elements offer the utmost safety and comply with the highest standards: The Needle Flame Test (according to IEC 60695-11-5) and the B1/B2 building material class (according to DIN 4102-1). **All elements offer standard outer geometries of 220 x 90mm with an (outer) corner radius of 20mm.**



Replenishment filters can be ordered on the **Bosch Online Shop** using part number: 17004805 (set of four filters)

The ducting elements are available for purchase at the **Bosch Online Shop**. Visit **[www.bosch-home.com.au/shop-productlist/cooking-baking](http://www.bosch-home.com.au/shop-productlist/cooking-baking)** for more information and to place an order. **To guarantee compatibility between the ventilation outlet of the cooktop and ducting elements, we recommend using the Bosch ducting elements shown below.**



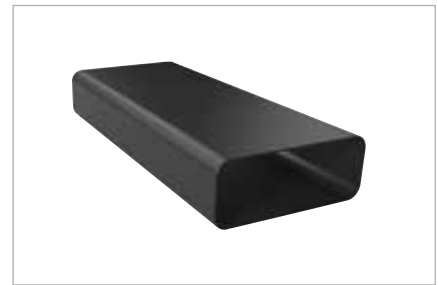
#### Diffusor Element

Part number: 11037001  
Diffusor element for partly or fully ducted recirculation.



#### Straight tube 500mm

Part number: 17005030  
Straight tube element (male).



#### Straight tube 1000mm

Part number: 17005345  
Straight tube element (male).



#### Adaptor round-flat (horizontal)

Part number: 17005349  
Male adaptor element to combine round and flat duct elements.



#### 90° Adaptor round-flat

Part number: 17005350  
Male 90° adaptor element to combine round and flat duct elements.



#### 90° flat duct bend horizontal

Part number: 17005348  
Horizontal 90° bow flat duct element (male).



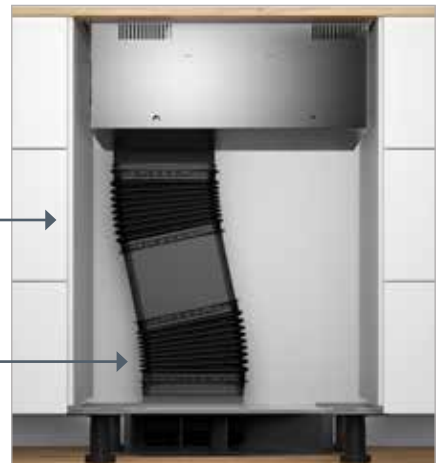
#### Connector sleeve (female)

Part number: 17005038  
Connector sleeve (female) to combine male flat duct elements.



#### Connector flexible (female)\*

Part number: 17006154  
Flexible, female sleeve element to combine male flat duct elements.



All elements have a (outer) corner radius of 20mm.

\*The materials used in all ducting elements offer the utmost safety and comply with the highest standards: The Needle Flame Test (according to IEC 60695-5-11) and the B1/B2 building material class (according to DIN 4102-1).

## Ducting elements continued.



### 90° flat duct vertical (small radius)

Part number: 17006153

Vertical 90° "S" bow flat duct element (male).  
Suitable for worktop depths  $\geq 60$ cm.



The vertical 90° "S" bow with a tight radius enables ducting within the cabinetry and offers (with respect to the positioning of the worktop) a minimum space of 448mm for the base unit's drawers.



### 90° flat duct vertical (medium radius)

Part number: 17005035

Vertical 90° "M" bow flat duct element (male).  
Suitable for worktop depths  $\geq 65$ cm.



The vertical 90° "M" bow with a medium radius enables ducting (partly) within the cabinetry and offers (with respect to the positioning of the worktop) a minimum space of 475mm for the base unit's drawers.



### 90° flat duct vertical (large radius)

Part number: 17005034

Vertical 90° "L" bow flat duct element (male).  
Suitable for worktop depths  $\geq 70$ cm.



The vertical 90° "L" bow with a large radius enables ducting behind the backpanel of the cabinetry and offers (with respect to the positioning of the worktop) maximum space for full drawer depths in the base unit.

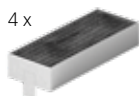
## Configuration example# for partly ducted installation in a 70cm deep worktop:

Male parts always need to be connected with a female sleeve.



More installation examples  
on pages 32–35

Carbon filters included  
with the cooktop



Sealing gasket included  
with the cooktop



Installation kit HEZ9VDKRO

2 x



3 x



# Please note the above is just an example. Please discuss with your installer which elements you require in your individual installation situation.



For the first time, a cooktop with integrated ventilation can fit into a 60cm wide base cabinet.

#### Appliance variants for 60cm base cabinets

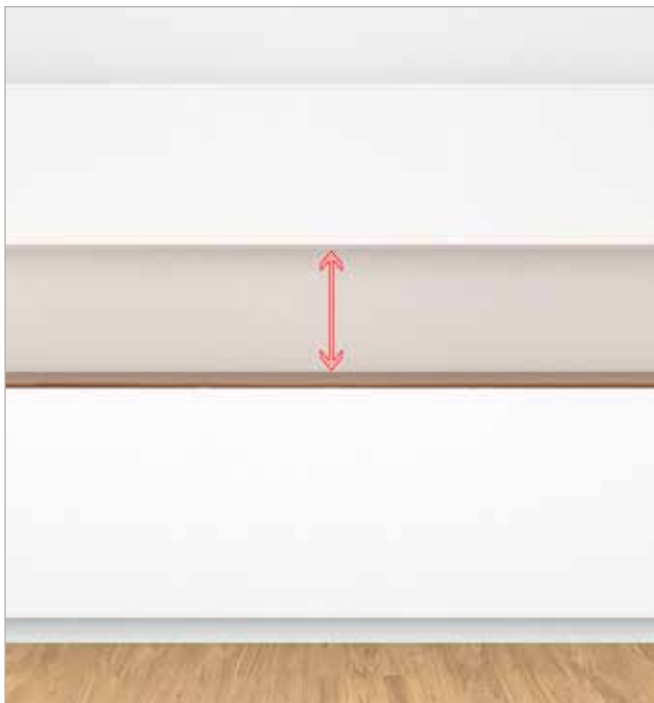


60cm base cabinets	
Cooktop	Worktop cut-out
PVQ731F15E	560 x 490mm

#### Appliance variants for 60–80cm base cabinets

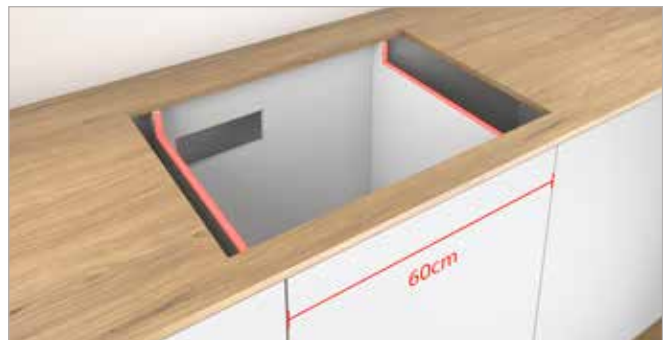


60–80cm base cabinets	
Cooktop	Worktop cut-out
PVQ811F15E	750 x 490mm



The distance between base cabinets and wall units can be chosen freely.

There are no appliance related requirements – except the easy handling of cookware.



The side panels of the base cabinet can be extended with cabinetry adjustment to fit a wider cooktop. Only the centralised ventilation base immerses with the full depth. The depth should be considered when planning respective drawers. **It is recommended to not plan additional built-in appliances below the unit, as the lower spillage collector needs to be accessible from below the cooktop.**

## Notes on drawer depths and benchtop depths.



The drawer depth possible and the worktop depth required depend on the selected ducting configuration and – depending on the planning scenario – the vertical 90° flat duct bow element is used.



Installation scenarios in unducted recirculation configurations offer the most convenient planning options.

The unducted installation accessory with its flexible, telescopic part connects the appliances's air outlet with the backpanel of the cabinetry. Since there are no further ducting elements necessary, planning is possible with full drawer depths and worktop depths from 60cm onwards.

Planning scenarios with ducted configurations need vertical 90° flat duct bow elements. These elements offer different characteristics with respect to the bow element chosen based on your planning requirements (refer to page 20).

## Notes on benchtop thickness.



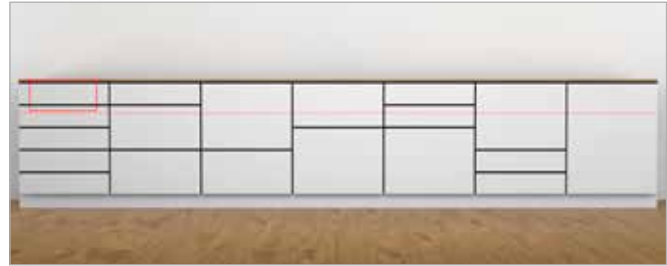
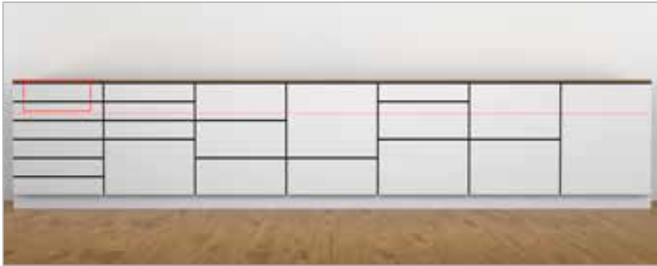
Installation of cooktops with integrated ventilation requires a benchtop **thickness  $\geq 16\text{mm}$** .



If the benchtop is thinner than 16mm, cooktops can still be easily installed. Simply ensure that an installation depth  $\geq 16\text{mm}$  is achieved in the installation area by doubling the material.

The thinner the installation thickness and worktop, the more important it is to ensure its bearing capacity and stability. The cooktop with integrated ventilation module's own weight combined with a full load of pots and their contents can weigh as much as 60kg. The worktop must be able to provide this level of stability. The worktop manufacturer's structural integrity specifications are to be taken into account.

## Notes on immersion depths and kitchen matrix systems.



The immersion depth of PVQ731F15E and PVQ811F15E is **223mm**. This installation depth only blocks the storage space in the top drawer, so most standard kitchen matrix systems and dimensions are possible. Always consider the depth of the ventilation module when planning cabinetry drawers.

If the immersion depth of the ventilation module is greater than the intended length of the top fixed panel, the second drawer's frame height can be made shorter than the front panel itself. Although the ventilation then extends partway into this area, it doesn't interfere with the drawer's free movement. If the front panel is the same height as the drawer frames and content, it may not be possible to use the second drawer.



## Notes on ducted extraction planning.

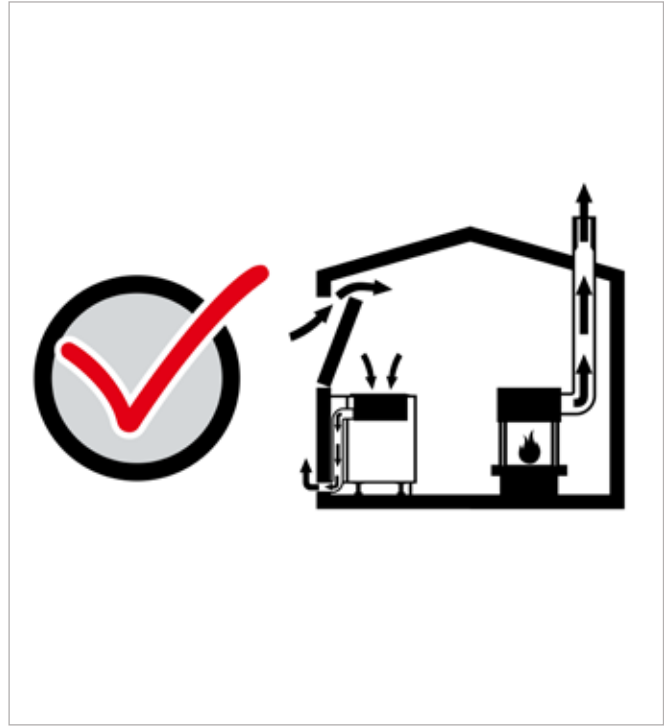


The pressure drop resistant blower with EcoSilence Drive motor enables longer and more complex ducting scenarios of up to 8m with 4 x 90° bow elements that offer adequate ventilation performance. This covers the majority of all ducted extraction planning options. Longer planning scenarios are also possible, but it will reduce the performance of the integrated ventilation system.



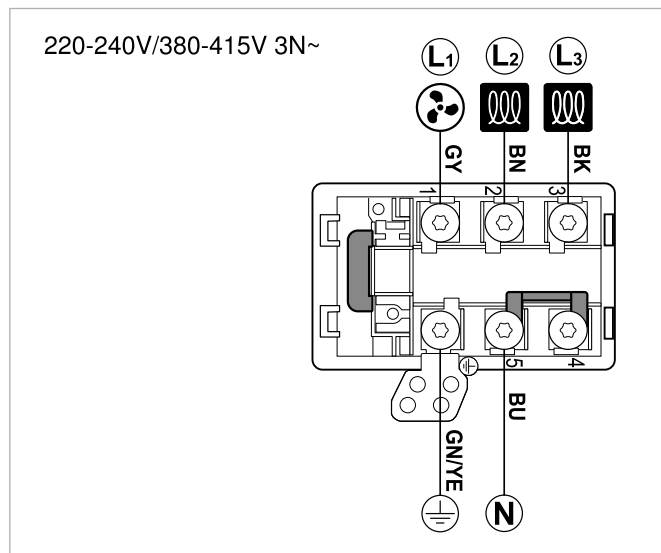
For fully ducted installation, if the exhaust air is led through the outer wall, a mechanical telescopic wall outlet unit (Ø 150mm) with (integrated) backflow flap should be used. A maximum opening pressure of 65 Pa must be taken into account. The backflow flap and wall box can be obtained from specialist dealers.





Ensuring sufficient air supply is critical in a room with an air-dependent fireplace (if the appliance is planned and operated in ducted extraction mode):

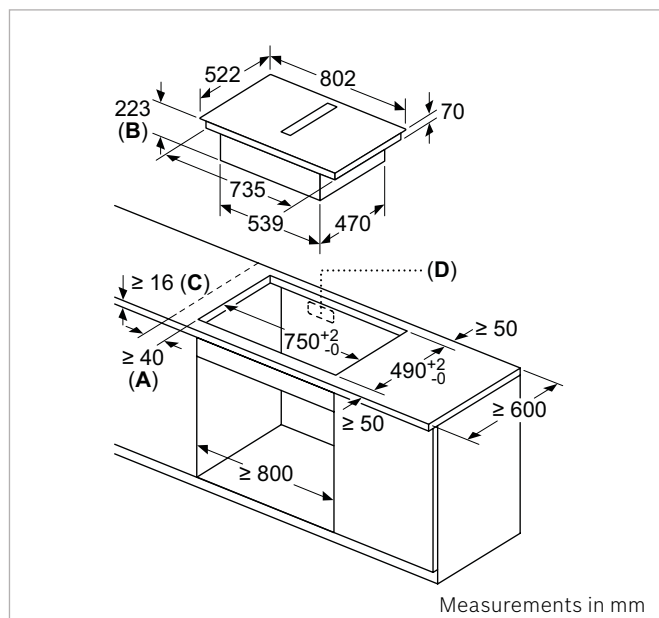
- Safe operation is only possible if the negative pressure in the room where the fireplace is located does not exceed 4 Pa (0.04 mbar). This can be achieved if, for example, a window contact switch is installed. This device allows the air required for combustion to flow in. The window contact switch can be obtained from specialist dealers. The installation instructions for the window contact switch must be observed.
- The cooktop with integrated ventilation module offers a connection option for a window contact switch with a two or three phase connection. The supplied connection cable (5G2.5mm<sup>2</sup>) is installed, with a phase for a window contact switch available. With a connection 2N/3N, phase L1 (gray) corresponds to the fan motor. Hints can be found on the electrical connection diagram on the device ("fan").



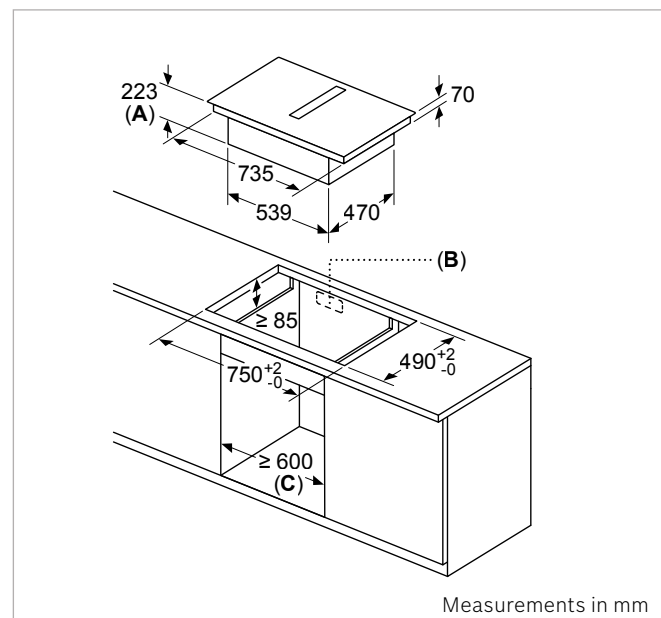
Exemplary connection diagram for a 3-phase electrical connection.

# Dimensional drawings.

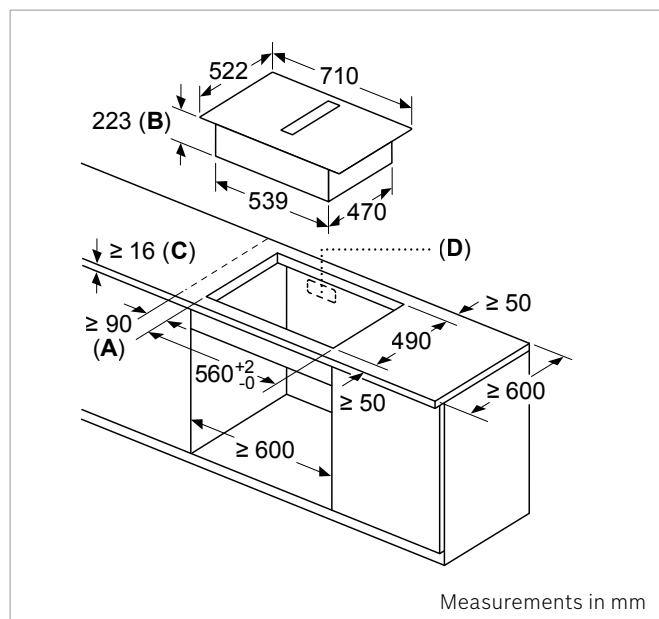
PVQ811F15E for **80cm** base cabinets



PVQ811F15E for **60cm** base cabinets



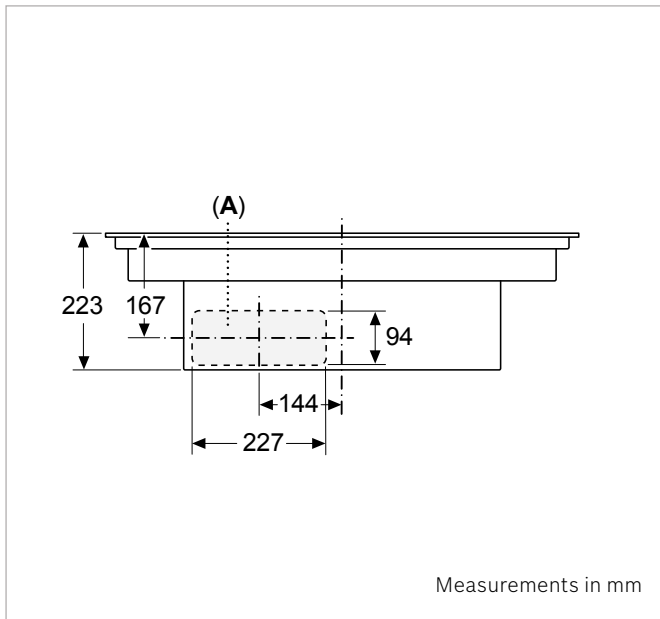
PVQ731F15E for **60cm** base cabinets



- A – Minimum distance between cut-out and wall.
- B – Immersion depth.
- C – The worktop into which the appliance is installed should be able to withstand loads up to approximately 60kg – if necessary using suitable substructures.
- D – A cut-out in the cabinetry's backpanel is necessary for ducting. The exact size and position can be taken from specific drawings.
- E – PVQ811F15E can be installed in 60cm wide cabinetry by adjusting the side panels.

## Air outlet

Cooktop with integrated ventilation variants

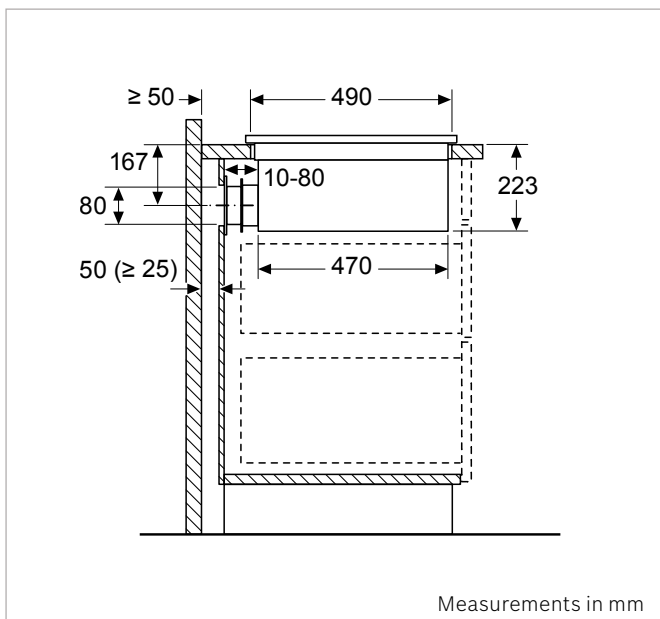


A – Connected directly at the rear.

Installations in unducted recirculation configurations.

### Side view:

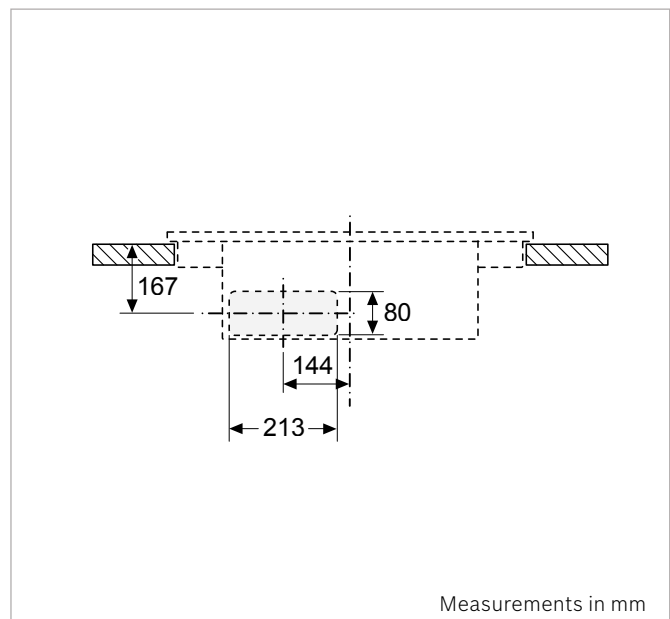
Cooktop with integrated ventilation variants



PVQ731F15E/PVQ811F15E

### Position of the cut-out within the backpanel of the cabinetry:

Cooktop with integrated ventilation variants

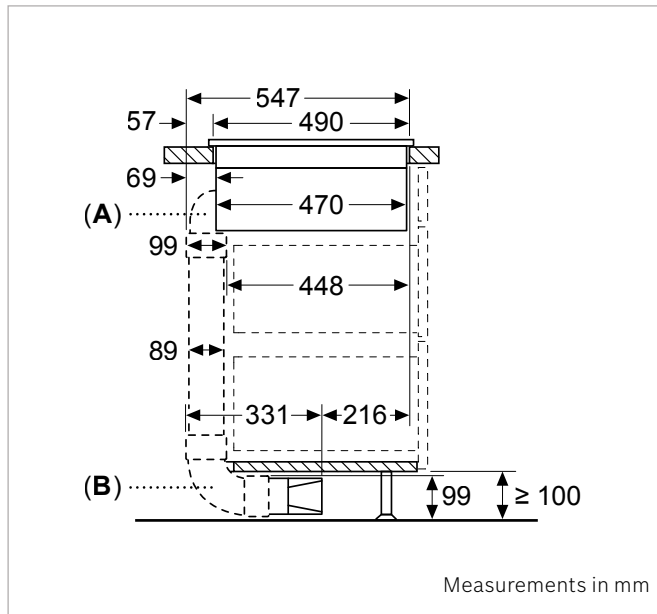


PVQ731F15E/PVQ811F15E

# Dimensional drawings.

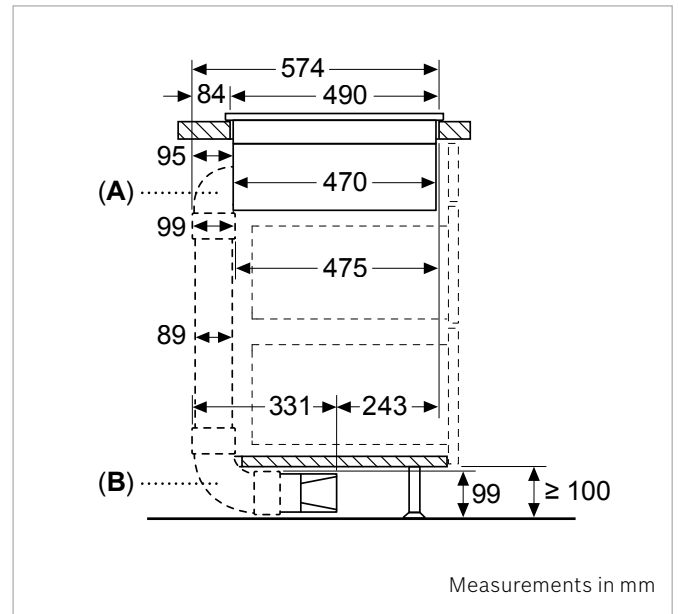
Installations in (partly) ducted recirculation and ducted extraction configurations – side view.

Cooktop with integrated ventilation variants



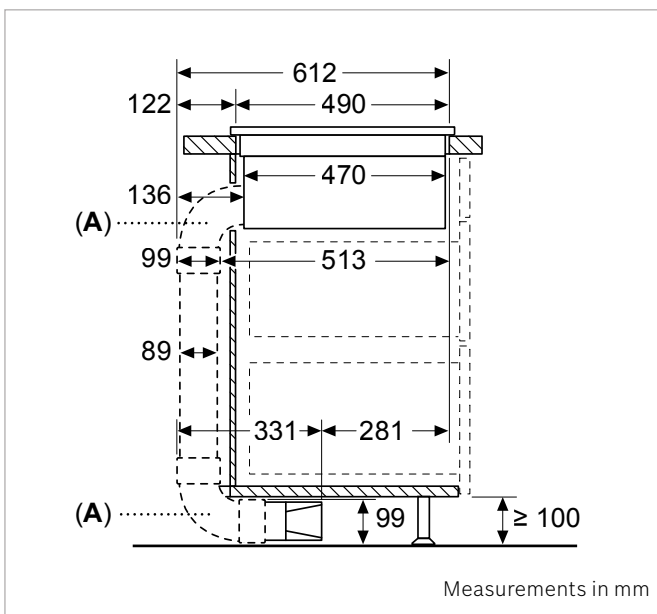
**PVQ731F15E/PVQ811F15E**

A – With 90° "S" bow (17006153)  
B – With 90° "L" bow (17005034)



**PVQ731F15E/PVQ811F15E**

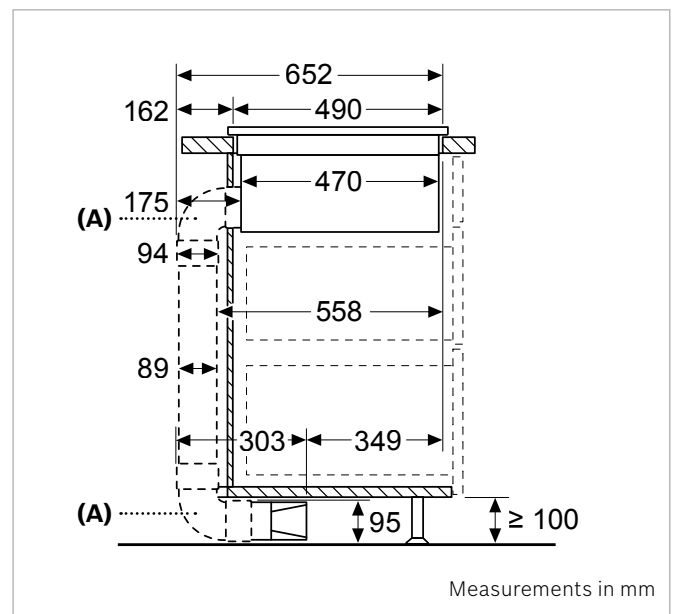
A – With 90° "M" bow (17005035)  
B – With 90° "L" bow (17005034)



**PVQ731F15E/PVQ811F15E**

A – With 90° "L" bow (17005034)

All additional ducting parts  
needed are included in  
accessory kit **HEZ9VDKRO**



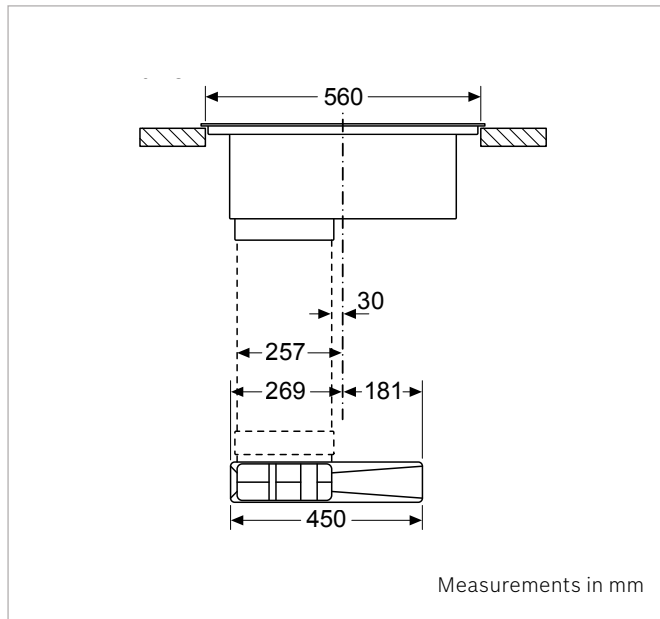
**PVQ731F15E/PVQ811F15E**

A – With third party 90° bow



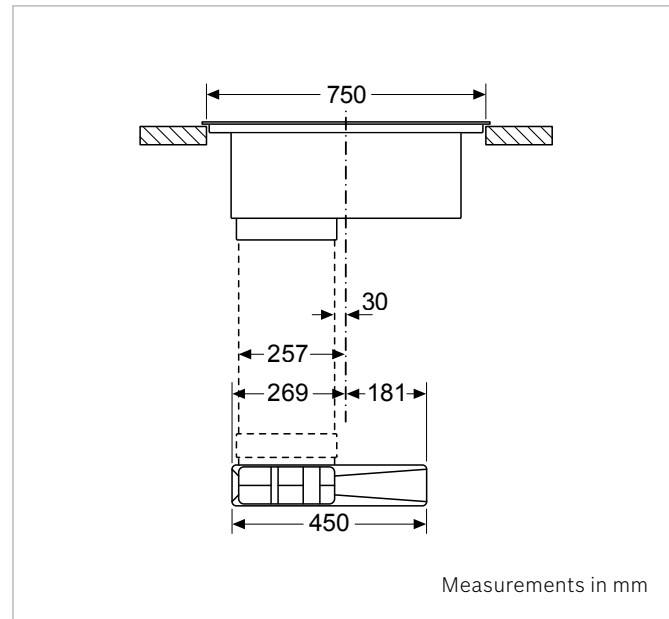
## Installations in (partly) ducted recirculation and ducted extraction configurations – front view.

Cooktop with integrated ventilation for **60cm** base cabinets



**PVQ731F15E**

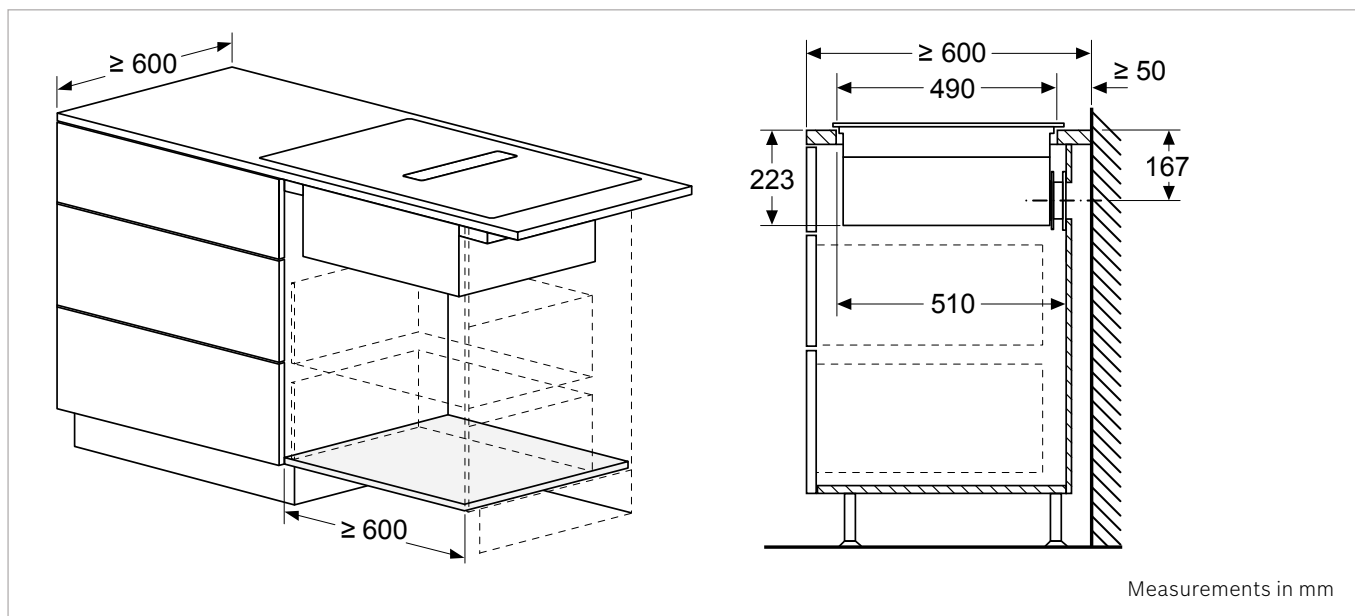
Cooktop with integrated ventilation for **80cm** base cabinets



**PVQ811F15E**

## Installations in unducted recirculation – side view.

Cooktop with integrated ventilation variants

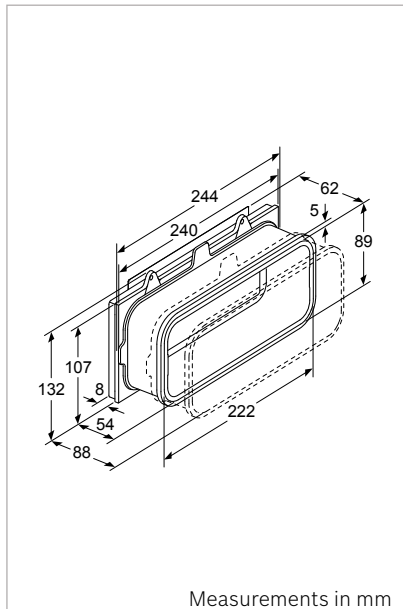


**PVQ731F15E/PVQ811F15E**

# Dimensional drawings.

Installation accessories / flat duct elements.

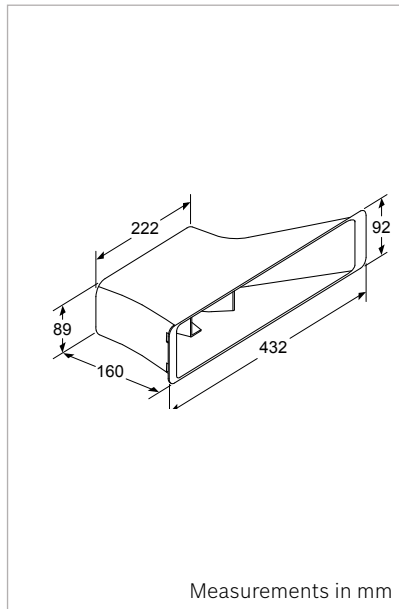
## Included with Appliance



### Telescopic slider

Of installation kit HEZ9VRUD0 for unducted recirculation extraction

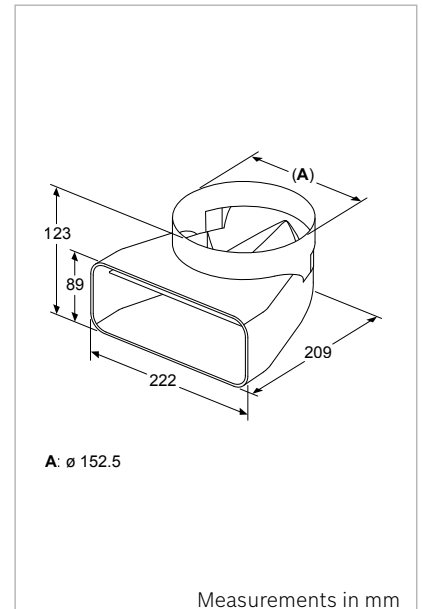
## Flat duct elements (male)



### Diffusor

Part number: 11037001<sup>1</sup>

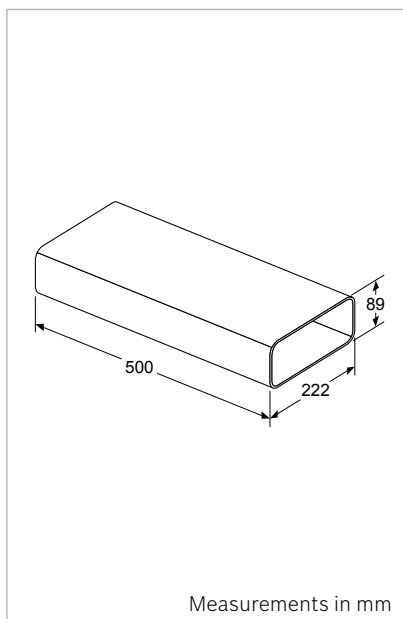
Of installation kit HEZ9VDKR0 for fully or partly ducted recirculation extraction.



### 90° Adaptor round-flat

Part number: 17005350

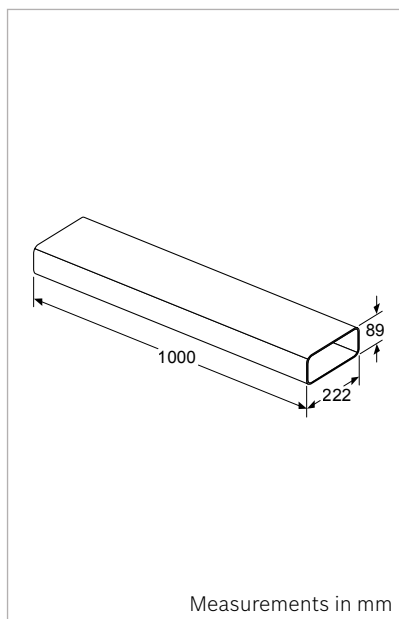
Male 90° adaptor element to combine round and flat duct elements.



### Straight tube 500mm

Part number: 17005030

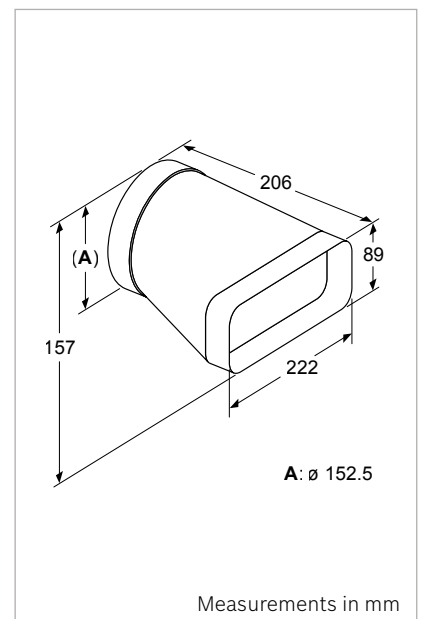
Straight tube element (male, 500mm).



### Straight tube 1000mm

Part number: 17005345

Straight tube element (male, 1000mm).



### Adaptor round-flat (horizontal)

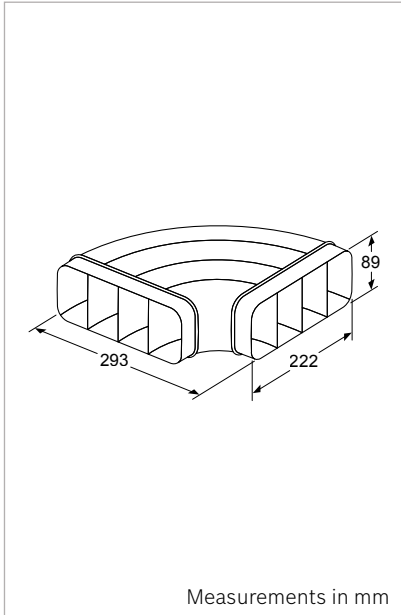
Part number: 17005349

Male adaptor element to combine round and flat duct elements.

All elements have a (outer) corner radius of 20mm.

There are no dimensional drawings for the CleanAir filter (17004805) and Acoustics filter (17004801).

<sup>1</sup>Also available for individual purchase



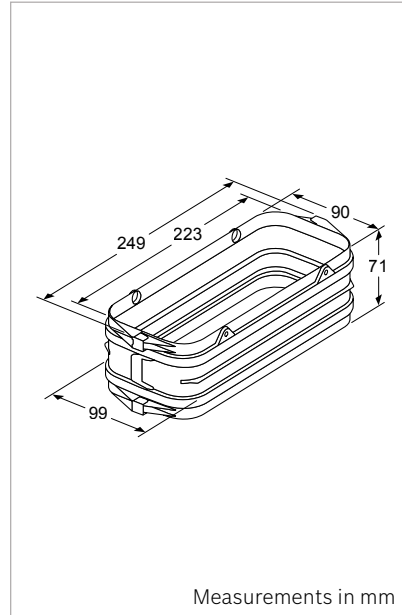
Measurements in mm

#### 90° flat duct bend horizontal

Part number: 17005348

Horizontal 90° bow flat duct element (male).

#### Flat duct elements (female)

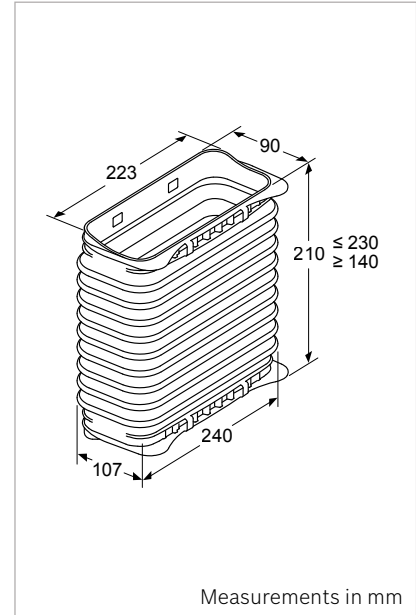


Measurements in mm

#### Connector sleeve (female)

Part number: 17005038

Connector sleeve (female) to combine male flat duct elements.

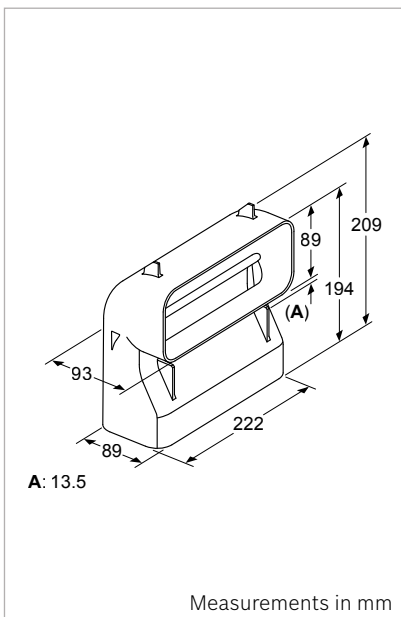


Measurements in mm

#### Connector flexible (female)

Part number: 17006154

Flexible, female sleeve element to combine male flat duct elements.



Measurements in mm

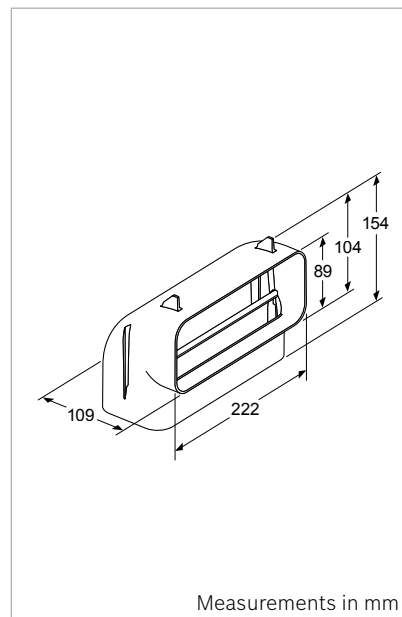
#### 90° flat duct vertical (small radius)

Part number: 17006153

Vertical 90° "S" bow flat duct element (male).

**Size (HxD):** 209mm x 93mm

**Minimum worktop depth:** 600mm



Measurements in mm

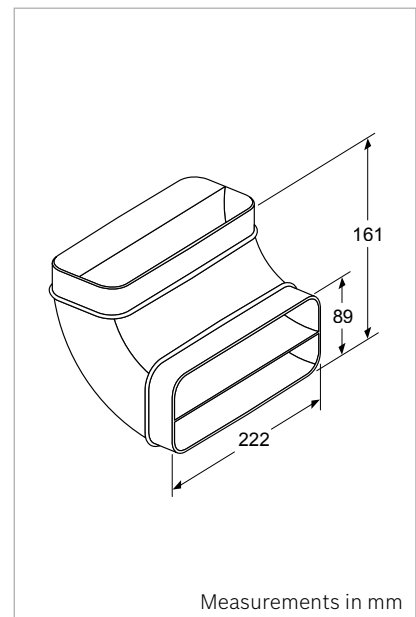
#### 90° flat duct vertical (medium radius)

Part number: 17005035

Vertical 90° "M" bow flat duct element (male).

**Size (HxD):** 154mm x 109mm

**Minimum worktop depth:** 650mm



Measurements in mm

#### 90° flat duct vertical (large radius)

Part number: 17005034

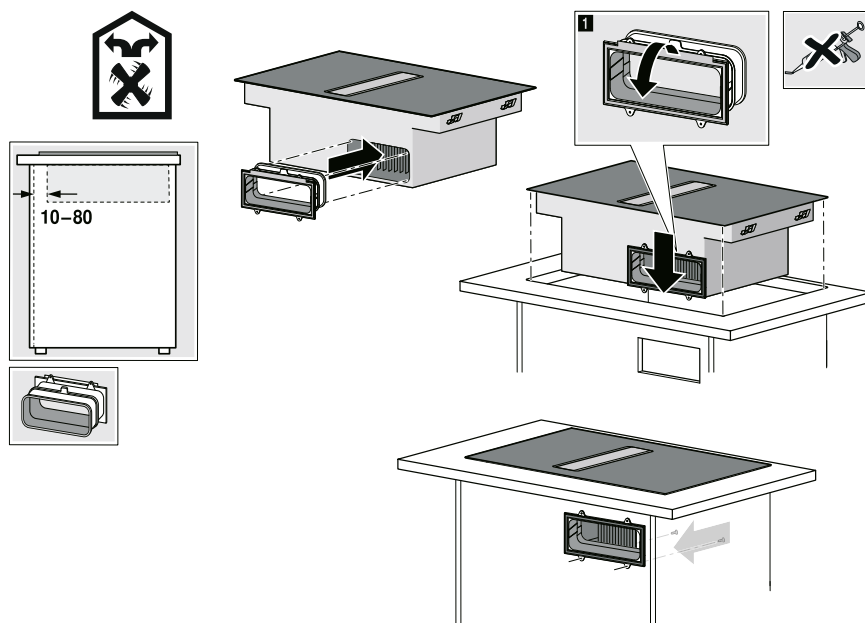
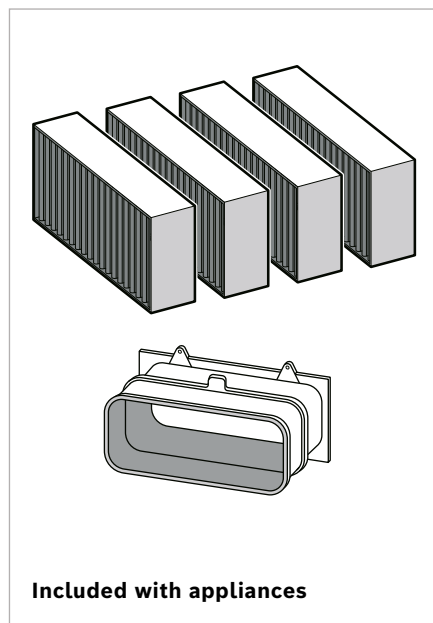
Vertical 90° "L" bow flat duct element (male).

**Size (HxD):** 161mm x 161mm

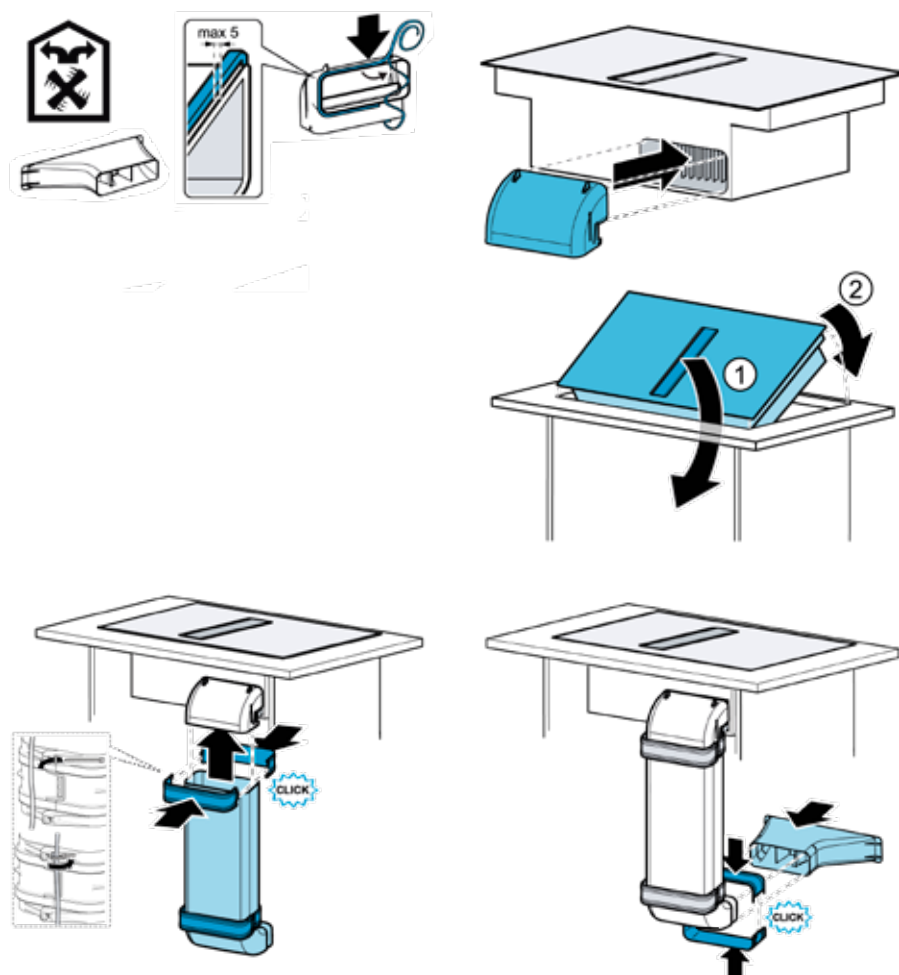
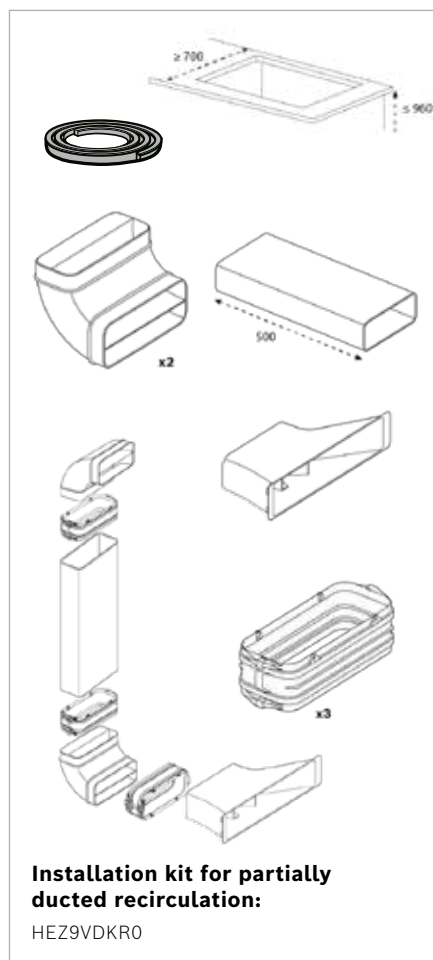
**Minimum worktop depth:** 700mm

# Condensed Installation instructions.

## Unducted recirculation – installation instructions

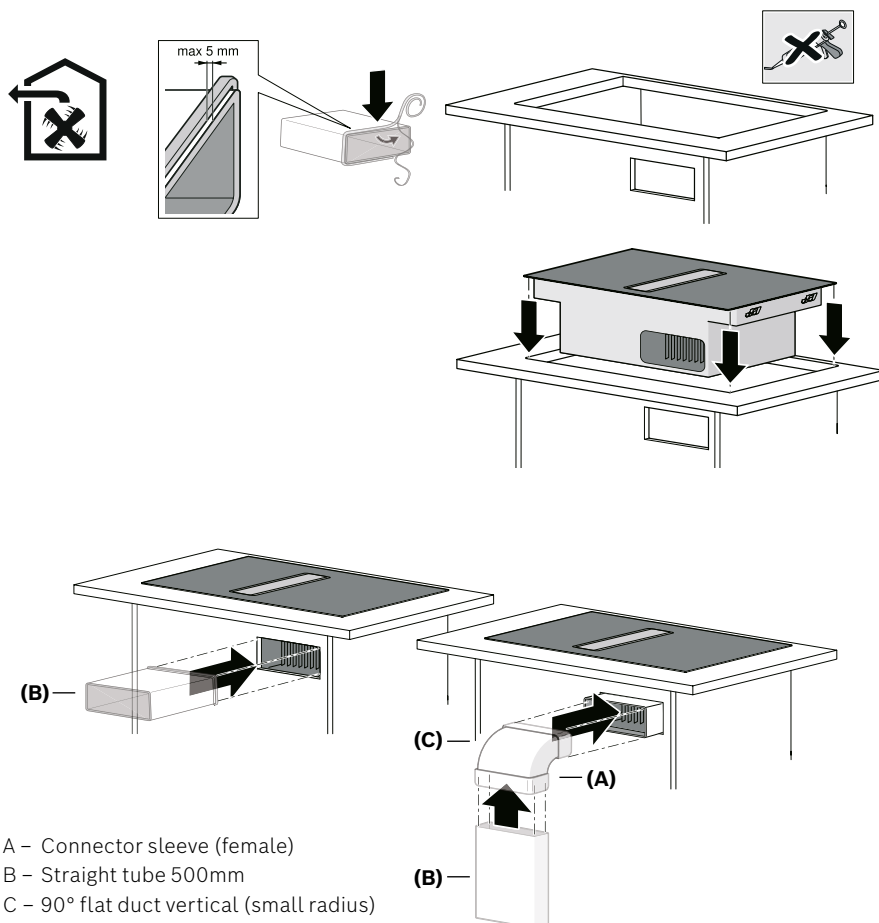
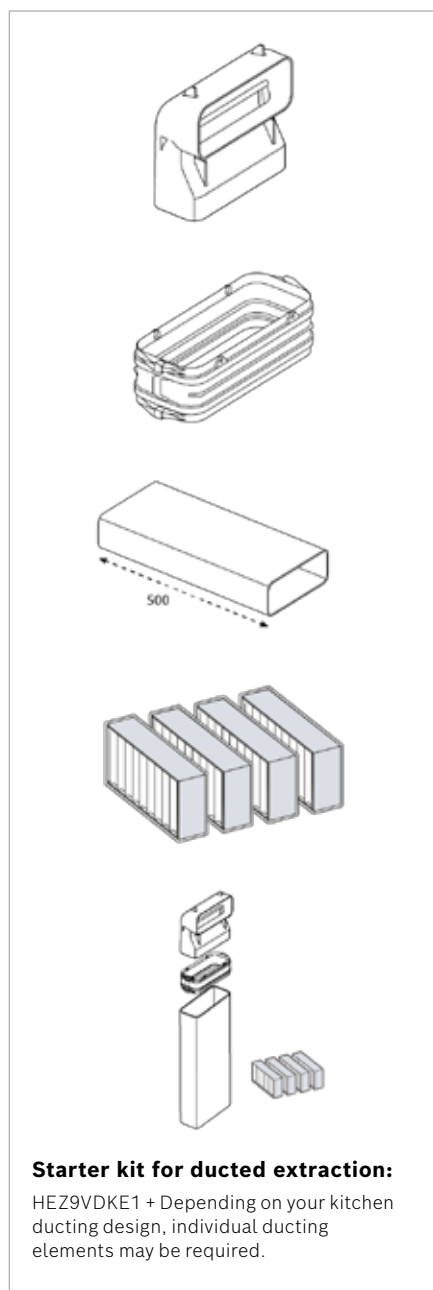


## Partially ducted recirculation – installation instructions





## Ducted recirculation – installation instructions\*



### Option 1\*

For ducting directly behind the unit

### Option 2\*

Starting kit for ducting underneath the appliance.

\*Depending on your kitchen ducting design, individual ducting elements may be required.

## Instruction manuals

Scan the QR codes below to view your vented cooktop instruction manual.



**PVQ811F15E**  
80cm Induction cooktop  
with integrated ventilation

[https://media3.bosch-home.com/  
Documents/9001571827\\_A.pdf](https://media3.bosch-home.com/Documents/9001571827_A.pdf)

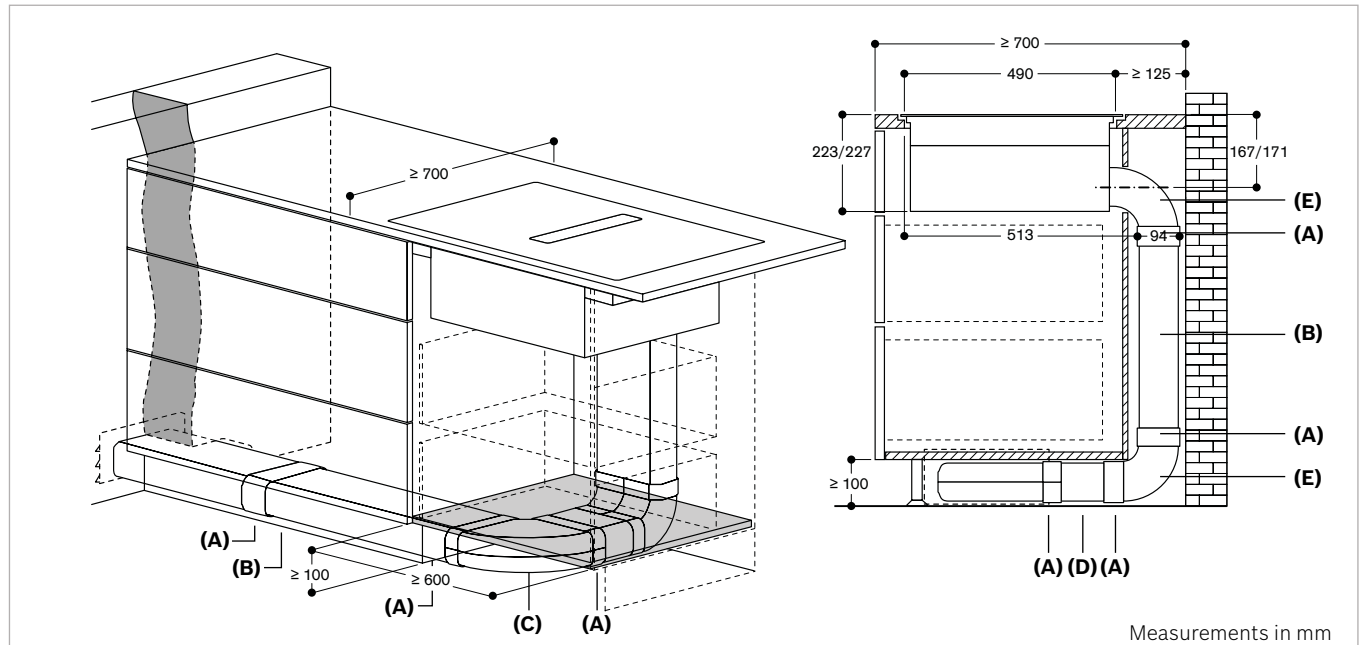


**PVQ731F15E**  
70cm Induction cooktop  
with integrated ventilation

[https://media3.bosch-home.com/  
Documents/9001489075\\_E.pdf](https://media3.bosch-home.com/Documents/9001489075_E.pdf)

# Typical planning scenarios for ducted installation.

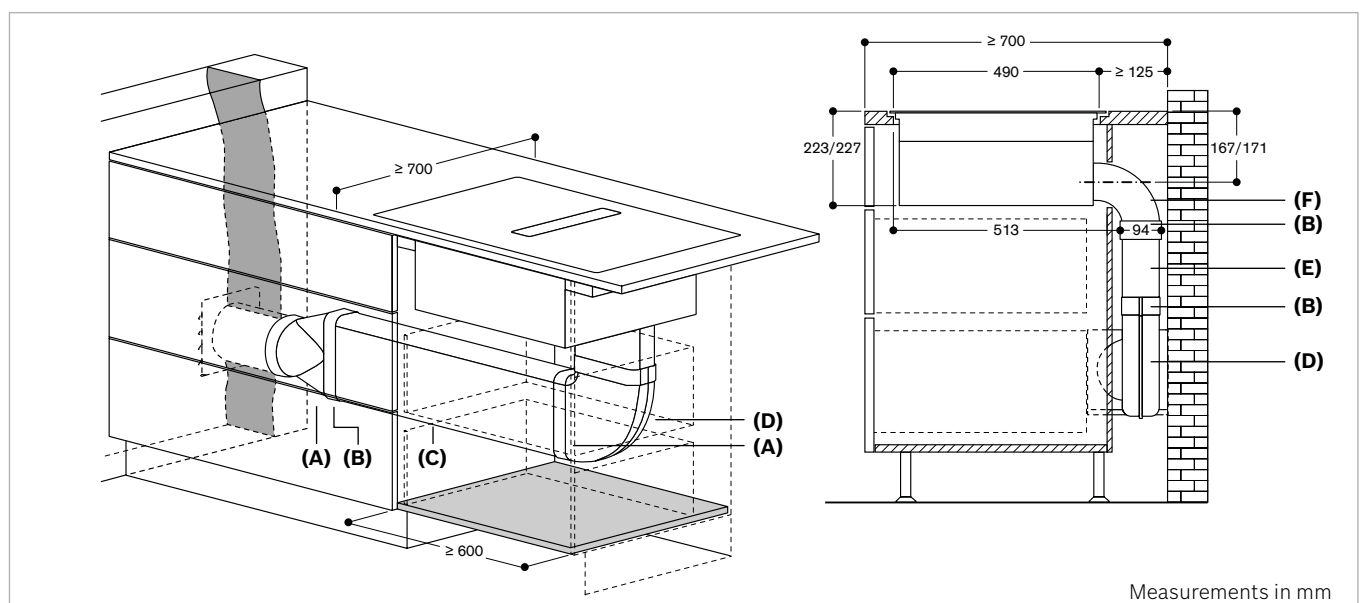
## Ducted installation – Scenario 1



- A – Connector sleeve (female)
- B – Straight tube 1000mm
- C – 90° flat duct bend horizontal
- D – Straight tube 500mm
- E – 90° flat duct vertical (large radius)

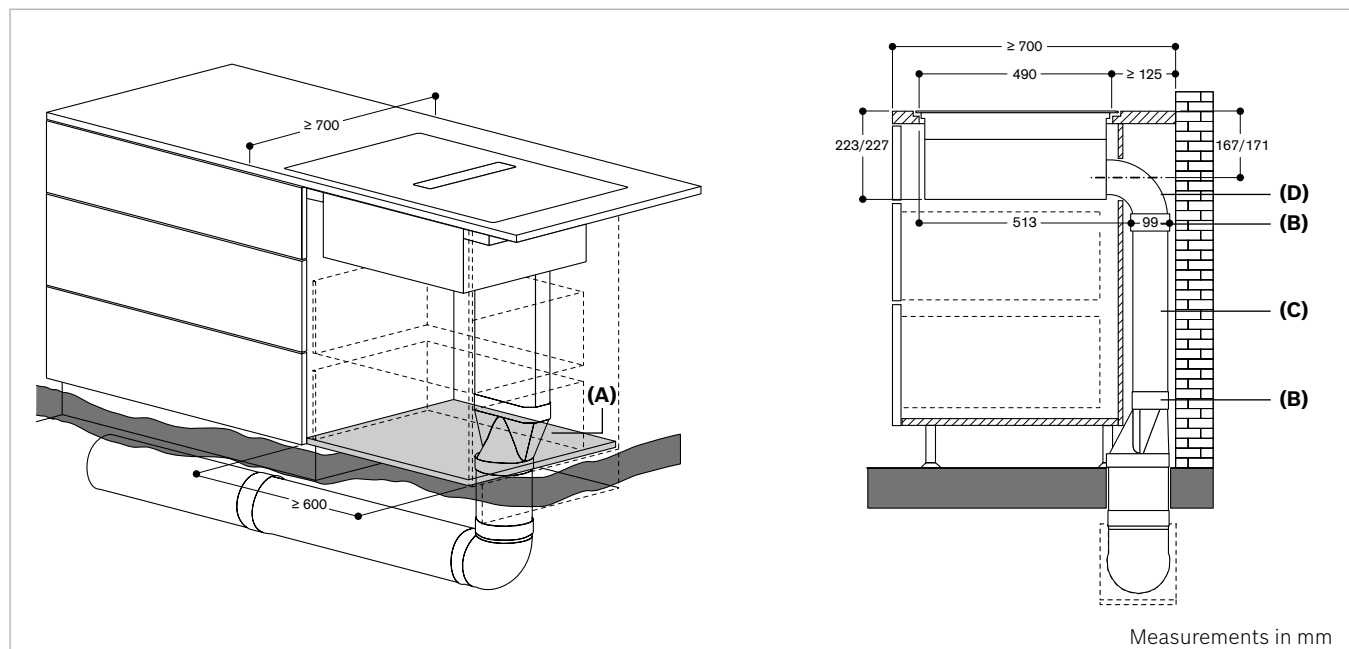
## Ducted Installation – Scenario 2

We recommend using a back flap to avoid wind/insects/dust etc. to come into the house.



- A – Adaptor round-flat (horizontal)
- B – Connector sleeve
- C – Straight tube 1000mm
- D – 90° flat duct bend horizontal
- E – Straight tube 500mm
- F – 90° flat duct vertical (large radius)

## Ducted Installation – Scenario 3



- A – Adaptor round-flat (horizontal)
- B – Connector sleeve (female)
- C – Straight tube 1000mm
- D – 90° flat duct vertical (large radius)

**BSH Home Appliances Pty Ltd**

1555 Centre Road Clayton VIC 3168

**Postal Address**

Locked Bag 66, Clayton South VIC 3169

**Customer Line**

Phone: 1300 369 744

**[www.bosch-home.com.au](http://www.bosch-home.com.au)**



Certain appliances shown in this catalogue are not available in your country. Model numbers and specifications are for reference only and subject to change without prior notice. Please contact your local Bosch retailer for the latest information. Whilst every care has been taken in the preparation of this publication, BSH does not warrant the accuracy or completeness of the information in this publication and BSH reserves the right to alter specifications without notice. To the extent permitted by law, BSH excludes all liability, including negligence, for any loss incurred in reliance on the contents of this publication.

Printed in Australia. KRD 05/2022 – BH 5633 B



@BoschHomeAU