

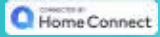
60cm Freestanding Dishwasher

SMS8YCI01E

- VarioDrawer Pro with Extra Clean Zone
- Zeolith Drying



Water Consumption:
0.70 litres/place setting
Registration No:
DW-2021/031957/TUV



Now
\$3,499 (U.P. \$3,699)

WORLD'S NO1 BRAND
dishwashers*

*Source: Euromonitor International Limited, volume sales, 2021



Scan here for more details

Freestanding Dishwasher



60cm Freestanding Dishwasher
SMS4ECI14E

(U.P. \$2,999)

Now
\$2,799

- Efficient Dry
- Half Load



60cm Freestanding Dishwasher
SMS4HAW48E

(U.P. \$2,599)

Now
\$2,399

- ExtraDry
- Rackmatic Rack



Water Consumption:
0.70 litres/place setting
Registration No:
DW-2021/031883/TUV



Water Consumption:
0.70 litres/place setting
Registration No:
DW-2021/031884/TUV

No more scrubbing away and let the experts handle your dishwashing.



Dishwasher



60cm Freestanding Dishwasher
SMS2HAI12E

(U.P. \$1,999)

Now
\$1,799

- SpeedPerfect
- Rackmatic Upper Rack



60cm Freestanding Dishwasher
SMS46GW01P

(U.P. \$1,899)

Now
\$1,699

- HygienePlus
- Half Load

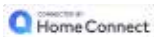


60cm Freestanding Dishwasher
SMS2IVW01P

(U.P. \$1,799)

Now
\$1,599

- HygienePlus
- Half Load



Water Consumption:
0.70 litres/place setting
Registration No:
DW-2021/031933/TUV



Water Consumption:
0.70 litres/place setting
Registration No:
DW-2018/a025398/TUV



Water Consumption:
0.80 litres/place setting
Registration No:
DW-2021/032615/TUV



NEW



45cm Freestanding Dishwasher

SPS2HKW57E

(U.P. \$2,099)

Now \$1,899

- SpeedPerfect+
- EcoSilence Drive™



Water Consumption: 0.80 litres/place setting
Registration No: DW-2021/031935/TUV

Table Top Compact Dishwasher

SKS68BB008

(U.P. \$1,499)

Now \$1,299

- VarioSpeed
- ExtraDry



Water Consumption: 1.20 litres/place setting
Registration No: DW-2021/032801/TUV

Table Top Compact Dishwasher

SKS62E32EU

(U.P. \$1,399)

Now \$1,199

- VarioSpeed
- ExtraDry

Water Consumption: 1.10 litres/place setting
Registration No: DW-2020/030402/TUV

Dishwashing Cleaning Kit

Removes grease, starch and protein residue for clean and sparkling.

- 1 Dishwasher Care /
- 1 Cleaning Powder



Scan here for more details

Now \$50 (U.P. \$57)



Built-in Dishwasher



60cm Fully-integrated Dishwasher

SMV6ZCX42E

(U.P. \$3,499)

Now \$3,299

- Time Light
- Zeolith Drying



Water Consumption: 0.60 litres/place setting
Registration No: DW-2021/032170/TUV



60cm Built-under Dishwasher

SMU4HCS48E

(U.P. \$3,199)

Now \$2,999

- EcoSilence Drive™
- Half Load



Water Consumption: 0.60 litres/place setting
Registration No: DW-2021/032169/TUV



60cm Semi-integrated Dishwasher

SMI4HCS48E

(U.P. \$2,699)

Now \$2,499

- Extra Dry
- Half Load



Water Consumption: 0.70 litres/place setting
Registration No: DW-2021/032168/TUV



NEW

60cm Semi-integrated Dishwasher

SMI2ITS33E

(U.P. \$2,499)

Now \$2,299

- Extra Dry
- VarioSpeed Plus



Water Consumption: 0.80 litres/place setting
Registration No: DW-2021/033711/TUV



45cm Semi-integrated Dishwasher

SPI2HKS59E

(U.P. \$2,099)

Now \$1,899

- SpeedPerfect+
- EcoSilence Drive™



Water Consumption: 0.80 litres/place setting
Registration No: DW-2021/031934/TUV

Dishwasher 101 - What you need to know.

Spend less time on the dishes.

You've done the cooking, and now comes the cleaning. Dishwashers offer the easiest and speediest cleanup. From choosing a suitable dishwasher to maximizing its capabilities, find out all you need to know about this kitchen lifesaver!



Scan QR code to find out more

Choose the right dishwasher for your home.



Free-standing units

Standalone units that can be placed freely on the kitchen floor or tabletop.



Integrated and built-under

Installed under the kitchen counter and have a visible fascia panel. Allows you to install a furniture front on the dishwasher door to match your kitchen cabinetry.



Fully integrated

Seamlessly concealed behind your kitchen cabinetry with a full-panel furniture front on the door.

Cleaning dishes made even easier with Home Connect.

Home Connect brings to you innovative features that let you start, stop, and monitor the status of your dishwasher so that the time you use to spend washing dishes can now be better spent on the more important things in life.



Dishwasher Tablet Counter

Thanks to the Tab Counter within the Home Connect app, you'll never run out of dishwasher tabs again. Simply enter the information when you open a fresh pack of 50 tablets, and a push notification will be sent to you after 45 cycles.



Dishwasher Easy Start

Simply enter the types of dishes you have loaded, and your cleaning preferences on the Home Connect app. The Easy Start assistant will always recommend the best setting based on your inputs – that's one load off your mind.



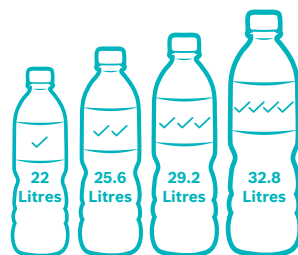
MachineCare Reminder

The Home Connect app sends a reminder every 30 wash cycle, to run the MachineCare Programme so your dishwasher is always functioning in tip-top condition.

Waste less water doing the dishes.

Go with more ticks under WELS to achieve more water savings.

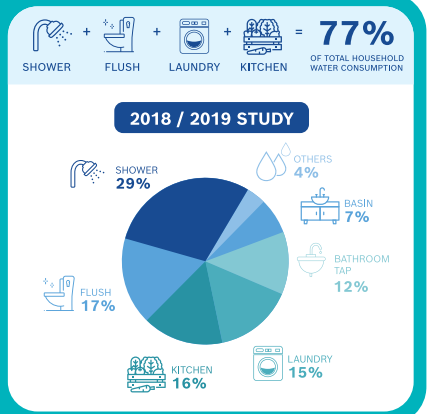
The Water Efficiency Labelling Scheme (WELS) uses a tick-rating system to denote the water efficiency of an appliance. The illustration on the right indicates the amount of water you can save in 5 minutes when using a water efficient dishwasher as compared to washing dishes under a running tap.



Amount of water saved in litres

PUB'S HOUSEHOLD WATER CONSUMPTION STUDY

The latest study conducted from 2018 to 2019 with about 400 households showed that the shower, flush, kitchen and laundry remained the largest water consumption areas, constituting 77% of total water usage in a household. Everyone can do our part to use water wisely.



Source from PUB, Singapore's National Water Agency.

Choosing the right Dishwasher.

- 01 Select a dishwasher with a suitable capacity that meets your household needs.
- 02 Choose a model with more ticks as it is more water efficient.
- 03 Look for a model with the lowest water consumption per use.

Efficient ways to use a dishwasher.

- 01 Choose the correct wash cycle to avoid water wastage.
- 02 Use your dishwasher on a full load.
- 03 Load dishes into the dishwasher according to instructions to maximise cleaning efficiency.