

# Built-in Appliances

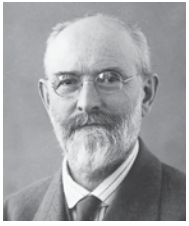
2016



**BOSCH**

Invented for life

# Who are Bosch?



“I have always acted according to the principle that it is better to lose money than trust. The integrity of my promises, the belief in the value of my products and in my word of honour have always had a higher priority to me than a transitory profit.”

Robert Bosch, 1921

For over 125 years, the Bosch name has been synonymous with engineering excellence. Our home appliances are renowned for their quality, reliability and performance which derives from our inherent, unflagging commitment and the painstaking thoroughness with which every unit is made. As you would expect from German engineering, there are no gimmicks or frills with our products – just pure, clean lines and beautiful, functional simplicity that will enhance any kitchen.

The values that shaped Robert Bosch's vision for his new company in 1886 are the same principles that guide the business today; never lose the trust of your customers, look after your staff and partners and change things for the better. It's what has kept Bosch at the forefront of the home appliance industry and what will keep it there in the future.



## Meet Karl, the Bosch Engineer.

Karl has devoted his working life to Bosch and ensures that feedback from customers continues to help shape our products of the future.

His detailed knowledge of our products and long experience can be accessed by customers who are looking to purchase a new appliance.

To understand more about the innovative features on our appliances throughout this brochure, visit our website [bosch-home.co.uk](http://bosch-home.co.uk)

Follow us to learn more on:



[facebook.com/BoschHomeUK](https://facebook.com/BoschHomeUK)



[twitter.com/BoschHomeUK](https://twitter.com/BoschHomeUK)



[youtube.com/BoschAppliancesUK](https://youtube.com/BoschAppliancesUK)



[pinterest.com/boschhomeuk](https://pinterest.com/boschhomeuk)

# Contents

Customer service	2-3
Home Connect	4-5

<b>Ovens</b>	<b>06-23</b>
Introducing the Bosch oven range	6-9
Single pyrolytic ovens	10-11
Single ovens	12-13
Double ovens	14-15
Built under double ovens	16
Compact ovens	17-19
Compact coffee centre	19
Warming drawers	20
Built-in microwave ovens	21-22
Freestanding microwaves	22-23

<b>Hobs</b>	<b>24-43</b>
Introducing the Bosch electric hob range	24-27
FlexInduction hobs	28-29
Induction hobs	30-32
Quicktherm ceramic hobs	32-33
Sealed Plate Electric Hobs	33
Introducing the Bosch gas hob range	34-37
Gas hobs	38-42
Domino hobs	43

<b>Hoods</b>	<b>44-57</b>
Introducing the Bosch hood range	44-47
Island hoods	48-49
Chimney hoods with glass	50-51
Chimney hoods	52-53
Telescopic hoods	54
Integrated hoods	55
Canopy hoods	56
Conventional hoods	56

<b>Home Laundry</b>	<b>58-63</b>
Introducing the Bosch home laundry range	58-61
Washing machines & washer dryers	62-63

<b>Dishwashers</b>	<b>64-73</b>
Introducing our advanced dishwasher range.	64-67
60cm integrated dishwashers	68-72
45cm integrated dishwashers	73

<b>Refrigeration</b>	<b>74-91</b>
Introducing our advanced refrigeration range.	74-77
Fridge freezers	78-81
Fridges & freezers	82-87
Built-under fridges & freezers	87
American style fridge freezers	88-91

<b>Specification guide</b>	<b>93-147</b>
----------------------------	---------------



# Service you can rely on.

For help with your home  
appliance, trust Bosch  
Customer Service.





## Arrange an engineer visit.

Our appliances are manufactured to the highest standards, but if you do need a visit from an engineer we are here to help. We have teams of locally based engineers around the country – employed and trained by Bosch\*. This gives them unrivalled expertise and knowledge of our appliances. We repair appliances both in and out of guarantee. All repairs are analysed in advance by a technical team so that the parts likely to be needed to complete the repair are sent to the engineer's van the night before the visit.

To arrange an engineer visit to your home please call:

**0344 892 8979**

Lines are open 24 hours.

Calls are charged at the basic rate, please check with your telephone service provider for exact charges.

You can also arrange an engineer visit online: **[bosch-home.co.uk/bookonline](https://www.bosch-home.co.uk/bookonline)**

## Product advice.

If you need help using programmes or features, or need assistance selecting a new Bosch appliance from our current range, our product advice team can help.

You can call us on

**0344 892 8979**

or visit: **[bosch-home.co.uk](https://www.bosch-home.co.uk)** for frequently asked questions and helpful videos.

Calls will be answered 24 hours a day, seven days a week. You can contact our specialist advisors Monday to Friday 8am to 8pm, Saturday 8am to 4pm and Sunday 9am to 3pm.

## Register my appliance

We advise that you register your appliances so that we can contact you about any product updates. Visit [registermyappliance.org.uk](https://registermyappliance.org.uk) for more information.

You can also call Bosch directly to register your appliance on 0344 892 8979 (option 5). Please call us within 28 days of purchase to discuss the full range of options for extending your warranty.

## Visit the Bosch online store.

Find a comprehensive selection of accessories to help you get the most out of your appliance, along with our full range of replacement spare parts and cleaning & care products at the Bosch online store.

You can also purchase Tassimo hot drinks machines, vacuum cleaners, irons, steam stations, kettles, toasters and food preparation appliances directly from us online.



You can call us on

**0344 892 8979**

or visit: **[bosch-home.co.uk/store](https://www.bosch-home.co.uk/store)**

## Accessories.

Many appliances can be enhanced with optional extras, such as telescopic rails for ovens or special cookware for hobs.

When buying a Bosch home appliance, you know you are purchasing a quality, reliable product. However many appliances are used daily, so need cleaning and maintaining to keep them looking great and operating at peak performance.

Every one of our cleaning and care products has been thoroughly tested and approved for safe and effective use on your Bosch home appliance.

## Replacement spare parts.

We keep in stock a comprehensive range of replacement spare parts for our appliances for up to ten years. All our parts are original spare parts, not copies.

## Award-winning service.

Bosch Customer Service was proud to win the Domestic & General Total Excellence & Quality Award for 2015. The award is decided from surveys sent to customers and 94.5% described our service as excellent or good.



# Introducing the Bosch home laundry range.

Our built-in home laundry appliances now save you even more water, energy and time. With clever new functions available across the range, it also means getting great cleaning results is even easier. To help you choose the right laundry appliance, we have divided them into the three ranges below.

## Serie | 8



Perfection in every detail, our **Serie 8** range of laundry appliances stand out from the crowd with superior quality, results and first class design. Cutting-edge design meets advanced technologies and unique innovations combine with energy efficiency to deliver outstanding performance that also saves you time, water and money.

## Serie | 6



Our **Serie 6** range of laundry appliances offer a broad choice of specialist programmes and deliver high performance and effortless convenience to enhance your lifestyle.

## Serie | 4



Models within our **Serie 4** range combine practical features and Bosch build quality in a consistent, value for money package.





**Whichever model you choose from our Serie ranges, you'll find lots of reasons to love your Bosch laundry appliance.**

**Hand wash in the machine.**

The woollens hand wash programme is so gentle that even the most delicate laundry can be conveniently washed in the machine.

**Washed and dried to perfection.**

Programme a wash and dry in one go. Thanks to advanced sensor drying, load the machine and you'll come back to perfectly dry clothes. The programme cleverly turns off, once the sensors detect the laundry is dry, so you'll save energy and minimise the risk of any damage through over-heating.

**Give your laundry a boost.**

When you need lightly soiled items more quickly, press the Flexi Time button once to reduce the wash time by 30% without compromising the cleaning performance. And for very lightly soiled items, pressing it twice speeds it up faster still.

# Effortlessly efficient, load after load.

At Bosch, we want to reduce power and water consumption while increasing reliability and convenience. With clever functions across the range, it means getting great cleaning results is even easier.





## We take the chore out of laundry.

We care that our appliances are both as efficient as possible to protect the environment, and as convenient as possible to make your life easier. That's why a Bosch washer dryer can wash and dry almost double the amount of laundry per load (4kg) than a standard washer dryer (2.5kg).

This means you can keep on top of the laundry basket, spend more time doing things you really love, and know that every time you put a washload on you're saving water and energy.

## Wash more, iron less.

On both washing machines and washer dryers, the **reduced ironing** function delivers a gentler tumble during the spin cycle. As a result, your clothes come out less creased, which makes ironing them a lot quicker and easier.



## Washing machines & washer dryers

Serie | 8



### Washing machine WIS28441GB



**Energy Efficiency** A+

**Drum Size** 7kg

**Noise Level Washing** 46dB



#### Specifications

Max spin 1400rpm

Energy consumption  
220kWh per year

8 special programmes  
including Super Quick 15  
& delicates

6 option buttons including  
reduced ironing, spin speed  
reduction and start delay

Fully electronic control dial

Large progress indication  
display

End of cycle buzzer

## Large capacity for large loads.

Ideal for families and busy households, the large 7kg capacity means you can wash more laundry in one go. A typical 7kg load could be made up of king size bed linen, including 4 pillow cases or 35 men's shirts. So whether you have lots of laundry, or fewer loads but with larger amounts, large capacity will make your laundry life easier.

Serie | 8



### Washing machine WIS24141GB



#### Specifications

Max spin 1200rpm

Energy consumption  
220kWh per year

3 special programmes  
including wool & delicates

4 option buttons including  
reduced ironing & spin  
speed reduction

3D AquaSpa wash system

Fully electronic control dial

End of cycle buzzer

**Energy Efficiency** A+

**Drum Size** 7kg

**Noise Level Washing** 46dB

Serie | 6



### Washer dryer WKD28541GB



#### Specifications

1400 - 600rpm spin

Energy consumption wash  
& dry: 4.81kWh

5 special programmes  
including Super Quick 15,  
nightwash, delicates & fluff  
removal

Option buttons: Menu, select

AquaSpa wash system

Large progress indication  
display

End of cycle buzzer

**Energy Efficiency** B

**Drum Size** 7kg washing / 4kg drying

**Noise Level Washing** 57dB



## Need to know more?

For in-depth appliance details please refer to the **Product Specification** section at the back of this brochure.

To understand more about the innovative features on our appliances visit **[bosch-home.co.uk](http://bosch-home.co.uk)**

## Serie | 4



### Washer dryer WKD28351GB



#### Specifications

Max spin 1400rpm

Energy consumption wash & dry: 4.85kWh

4 special programmes including delicates & fluff removal

4 option buttons including spin speed reduction

AquaSpa wash system

Progress indication display

End of cycle buzzer

**Energy Efficiency** B

**Drum Size** 7kg washing / 4kg drying

**Noise Level Washing** 57dB

# Introducing our advanced dishwasher range.

All our built-in dishwashers offer a range of advanced technologies as standard and additional options across the range to suit your individual requirements. To help you choose the right Bosch dishwasher, we have divided them into the four ranges below.

## Serie | 8



Our **Serie 8** range combines cutting edge design and advanced technologies for optimum cleaning performance. Their **A+++** rating is enhanced by **Zeolith**, which absorbs moisture before releasing it as hot air for energy efficient drying. Exceptionally quiet and offers additional storage and flexible loading solutions.

## Serie | 6



Our **Serie 6** range comes packed with technology, from energy and water saving modes to quick washes for when time is at a premium.

They also feature **VarioFlex Plus** and flexible loading solutions for accommodating the most awkward shaped dishes.

## Serie | 4



Our **Serie 4** range of models offer great value for money but do not compromise on Bosch build quality. They combine advanced energy and resource saving features and in addition offer basic **Vario baskets** with foldable racks in the top and bottom baskets.

## Serie | 2

Our **Serie 2** dishwashers offer you the classic design with easy operation. They are the optimal solution for anyone who wants a reliable appliance with good value for money.







**Whichever model you choose from our Serie ranges, you'll find lots of reasons to love your Bosch dishwasher.**

**Whisper quiet washing.**

Bosch dishwashers are amongst the quietest in the world. With revolutionary EcoSilence Drive™ there are dishwashers in the range which operate at 39 decibels, that's even quieter than the sound of a bee buzzing!

**Save water every load.**

It takes just 6.5 litres\* of water for our AquaStar dishwashers to clean 13 place settings for a three course meal\*\*. That's less water than it takes to fill a kitchen sink.

**10 year anti-rust warranty.**

Our appliances are made from top quality materials and in addition to our standard appliance warranty, we provide a free of charge warranty against rusting-through of the dishwasher's inner cavity.

\* 6.5 litre water consumption on standard Economy 50°C programme.

\*\* Three-course meal as defined by dinner, soup and dessert plate, cup and saucer, glass, knife, fork, soup, tea and dessert spoons for each place setting as well as 1 serving plate, 2 serving bowls, 2 serving spoons, 1 serving fork and 1 sauce spoon.



# Less water, less energy, more clean dishes.

Our clever built-in dishwashers include advanced features that reduce energy and water consumption. How refreshing.

## Not just a pretty face.

The **TFT touch colour display** clearly indicates which programme is being used plus the energy and water consumption for your chosen cycle. It features a real time clock and will also tell you the programme finish time.





## Where every pot has its place.

Our flexible **VarioFlex Pro** basket system allows you to adjust the space inside of your dishwasher to suit exactly the items you're washing. The foldable racks adapt to any load whilst still securing everything in place.

## Save water every load.

It takes just **6.5 litres\*** of water for our dishwashers to clean 13 place settings for a three-course meal\*\*. That's less water than it takes to fill a standard sized kitchen sink. And as our dishwashers are also energy efficient (up to an A+++ rating on some models), they also save you money.

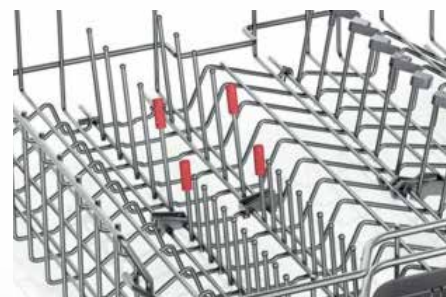
## Take away the guess work.

Bosch dishwashers are so quiet sometimes it's hard to tell whether they are on or off. **TimeLight** indicates the programme status and time remaining onto any floor surface. So you'll never disrupt the dishwasher cycle again.



## Put the pressure on.

Touchpoints indicate where to hold the foldable racks and adapt their position, or adjust the height of the upper basket. Thanks to these markings, you can instantly spot how and where to modify the baskets so you always have the perfect solution for every combination of dishes.



\* 6.5 litre water consumption on standard Economy 50°C programme.

\*\* Three-course meal as defined by dinner, soup and dessert plate, cup and saucer, glass, knife, fork, soup, tea and dessert spoons for each place setting as well as 1 serving plate, 2 serving bowls, 2 serving spoons, 1 serving fork and 1 sauce spoon.

## 60cm integrated dishwashers

## Serie | 8

**SMI88TS00G**

Semi integrated, brushed steel

**Energy Efficiency** A++**ActiveWater** only uses 9.5 litres**Place Settings** 14**Flexible loading.**

Our VarioFlex baskets allow you to tailor the space inside of your dishwasher to suit exactly the items you're washing. The foldable racks adapt to any load while still securing everything in place. The adjustable Rackmatic™ system allows the upper basket to be moved up and down to fit more in the top or bottom basket as required.



## Serie | 6

**SMI65P15GB**

Semi integrated, brushed steel

**Specifications**

6 programmes including Intensive 70, Eco 50 & Quick Wash 45

4 special options including VarioSpeed Plus, half load & extra dry

VarioFlex Plus basket system

Pull out silver baskets

3 stage Rackmatic™ top basket

Stainless steel interior

Control buttons on fascia

Red LED indicators

44dB

**Energy Efficiency** A++**ActiveWater** only uses 6.5 litres**Place Settings** 13

## Serie | 4

**SMI50C15GB**

Semi integrated, brushed steel

**Specifications**

5 programmes including Intensive 70, Eco 50 and Quick Wash 45

2 special options: VarioSpeed & half load

Vario basket system

Height adjustable top basket

Stainless steel / Polinox interior

Control buttons on fascia

Red LED indicators

46dB

**Alternative colours****SMI50C16GB** Black**SMI50C12GB** White**Energy Efficiency** A+**ActiveWater** only uses 9.5 litres**Place Settings** 12





### Specifications

8 programmes including Eco 50, Night 50 & Quick Wash 45

5 special options including VarioSpeed Plus, half load & extra dry

VarioFlex Pro basket system

VarioDrawer Pro

Pull out silver baskets

3 stage Rackmatic™ top basket

Stainless steel interior

Control buttons on fascia

Red LED indicators

41dB



## Need to know more?

For in-depth appliance details please refer to the **Product Specification** section at the back of this brochure.

To understand more about the innovative features on our appliances visit **[bosch-home.co.uk](http://bosch-home.co.uk)**



## Serie | 8



### SMV88TX26E Fully integrated, black



### Specifications

8 programmes including Eco 50, Night 50 & Quick Wash 45

6 special options including Shine & Dry, IntensiveZone, VarioSpeed Plus & half load

VarioFlex Pro basket system

VarioDrawer

Zeolith drying

3 stage Rackmatic™ top basket

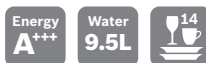
Stainless steel interior

TFT touch display

Door open assist

42dB

### SMV88TD00G Fully integrated, black



### Specifications

8 programmes including Eco 50, Night 50 & Quick Wash 45

5 special options including VarioSpeed Plus, half load and Extra Dry

VarioFlex Pro basket system

VarioDrawer Pro

3 stage Rackmatic™ top basket

Stainless steel interior

TFT touch display

Door open assist

42dB

**Energy Efficiency** A+++

**ActiveWater** only uses 7.5 litres

**Place Settings** 14

**Home Connect** control with your smart phone

**Energy Efficiency** A+++

**ActiveWater** only uses 9.5 litres

**Place Settings** 14

## 60cm integrated dishwashers

## Serie | 8

**SMV87TD00G**

Fully integrated, black

**Specifications**

7 programmes including Eco 50 &amp; Quick Wash 45

4 special options including Intensive zone, VarioSpeed Plus &amp; half load

VarioFlex Pro basket system

VarioDrawer Pro

3 stage Rackmatic™ top basket

Stainless steel interior

TFT touch display

Red LED indicators

Door open assist

44dB

**Energy Efficiency** A++**ActiveWater** only uses 9.5 litres**Place Settings** 14

## Serie | 6

**SMV69P15GB**

Fully integrated, brushed steel

**Specifications**

6 programmes including Intensive 70, Eco 50 and Quick Wash 45

4 special options including VarioSpeed Plus, half load and Hygiene Plus

VarioFlex Plus basket system

VarioDrawer

3 stage Rackmatic™ top basket

Stainless steel interior

Push buttons on top edge

Red LED indicators

Info light

39dB

**Energy Efficiency** A+**ActiveWater** only uses 9.5 litres**Place Settings** 14

## Serie | 6

**SMV69M01GB**

Fully integrated, brushed steel

**Specifications**

6 programmes including Intensive 70, Eco 50 and Quick Wash 45

4 special options including VarioSpeed Plus, half load and Hygiene Plus

VarioFlex Plus basket system

VarioDrawer Plus

3 stage Rackmatic™ top basket

Stainless steel interior

Push buttons on top edge

Red LED indicators

44dB

**Energy Efficiency** A++**ActiveWater** only uses 6.5 litres**Place Settings** 13**SBV69M00GB**

Fully integrated, brushed steel

**Specifications**

6 programmes including Intensive 70, Eco 50 and Quick Wash 45

4 special options including VarioSpeed Plus, half load and Hygiene Plus

VarioFlex Plus basket system

VarioDrawer Plus

3 stage Rackmatic™ top basket

Stainless steel interior

Push buttons on top edge

Red LED indicators

Info light

44dB

**Energy Efficiency** A++**ActiveWater** only uses 6.5 litres**Place Settings** 13



# 60cm integrated dishwashers

## Serie | 6



### SMV65M10GB

Fully integrated, brushed steel



#### Specifications

6 programmes including Intensive 70, Eco 50 and Quick Wash 45

2 special options: Intensive zone & VarioSpeed Plus

VarioFlex Plus basket system

3 stage Rackmatic™ top basket

Stainless steel interior

Push buttons on top edge

Red LED indicators

Info light

44dB

### SMV53M10GB

Fully integrated, brushed steel



#### Specifications

5 programmes including Intensive 70, Eco 50 and Quick Wash 45

2 special options: Intensive zone & VarioSpeed Plus

VarioFlex Plus basket system

3 stage Rackmatic™ top basket

Stainless steel interior

Push buttons on top edge

Red LED indicators

Info light

46dB

**Energy Efficiency** A++

**ActiveWater** only uses 9.5 litres

**Place Settings** 13

**Energy Efficiency** A++

**ActiveWater** only uses 9.5 litres

**Place Settings** 13

## Serie | 6



### SMV53M30GB

Fully integrated, brushed steel



#### Specifications

5 programmes including Intensive 70, Eco 50 and Quick Wash 45

2 special options: Intensive zone & Extra Dry

VarioFlex basket system

3 stage Rackmatic™ top basket

Stainless steel interior

Push buttons on top edge

Red LED indicators

Info light

46dB

### SMV53L00GB

Fully integrated, brushed steel



#### Specifications

5 programmes including Intensive 70, Eco 50 and Quick Wash 45

2 special options: Intensive zone & half load

VarioFlex basket system

3 stage Rackmatic™ top basket

Stainless steel interior

Push buttons on top edge

Red LED indicators

Info light

48dB

**Energy Efficiency** A++

**ActiveWater** only uses 9.5 litres

**Place Settings** 13

**Energy Efficiency** A+

**ActiveWater** only uses 11.5 litres

**Place Settings** 12

60cm integrated dishwashers

Serie | 2

SMV50C10GB  
Fully integrated, black

Energy  
A<sup>+</sup>

Water  
11.5L





Specifications

- 5 programmes including Intensive 70, Eco 50 and Quick Wash 45
- 1 special option: VarioSpeed
- Vario basket system
- Height adjustable top basket
- Stainless steel / Polinox interior
- Push buttons on top edge
- Red LED indicators
- Info light
- 48dB

SMV40C30GB  
Fully integrated, black

Energy  
A<sup>+</sup>

Water  
11.5L





Specifications

- 4 programmes including Eco 50 & Quick Wash 45
- 1 special option: VarioSpeed
- Vario basket system
- Height adjustable top basket
- Stainless steel / Polinox interior
- Push buttons on top edge
- Red LED indicators
- Info light
- 50dB

Energy Efficiency A <sup>+</sup>	Energy Efficiency A <sup>+</sup>
ActiveWater only uses 11.5 litres	ActiveWater only uses 11.5 litres
Place Settings 12	Place Settings 12

Serie | 2

SMV40C00GB  
Fully integrated, black

Energy  
A<sup>+</sup>

Water  
14L





Specifications

- 4 programmes including Eco 50 & Quick Wash 45
- Stainless steel / Polinox interior
- Push buttons on top edge
- Red LED indicators
- Info light
- 54dB

Energy Efficiency A <sup>+</sup>
ActiveWater only uses 14 litres
Place Settings 14

## 45cm integrated dishwashers

### Serie | 6



#### SPV69T00GB

Fully integrated, brushed steel



#### Specifications

6 programmes including Eco 50 & Quick Wash 45

3 special options including Intensive zone & VarioSpeed Plus

VarioFlex plus basket system

VarioDrawer

3 stage Rackmatic™ top basket

Stainless steel interior

Push buttons on top edge

Red LED indicators

44dB

**Energy Efficiency** A++

**ActiveWater** only uses 9.5 litres

**Place Settings** 10

### Serie | 4



#### SPV40C10GB

Fully integrated, black



#### Specifications

4 programmes including Intensive 70, Eco 50 & Quick Wash 45

1 special option: VarioSpeed

Vario basket system

Height adjustable top basket

Stainless steel interior

Push buttons on top edge

Red LED indicators

48dB

**Energy Efficiency** A+

**ActiveWater** only uses 9.5 litres

**Place Settings** 9

# Introducing our advanced refrigeration range.

Save more, waste less. Our range of built-in fridge freezers save you money thanks to their energy efficiency ratings. They are also packed with innovative technology to keep your food fresher for longer, so you'll throw out less and save on your weekly shopping bill. To help you choose the right appliance, we have divided them into the four ranges below.



## Serie | 8



Cutting-edge design meets advanced technologies. All models in our **Serie 8** range are packed with energy efficient and labour saving features that save valuable time, effort and money – perfect for modern, busy households.

## Serie | 6



Our **Serie 6** range of appliances combines energy efficient performance with convenient storage and superior food preservation.

## Serie | 4



All models in our **Serie 4** range combine practical features with Bosch build quality.



## Serie | 2

Built to keep electricity costs down. With energy efficiency an increasing priority in homes, the **Serie 2** refrigeration range is just as efficient as it is value for money.

**Whichever model you choose from our Serie ranges, you'll find lots of reasons to love your Bosch fridge freezer.**

### **Energy efficient.**

365 days a year, 24 hours a day, fridges and freezers are always on. In fact, they make up around 17% of the electricity used in the home, or even more if it's a particularly old model.\* That's why we design our fridges and freezers to be as energy efficient as possible, and we're proud to be able to offer so many right across our ranges.

### **NoFrost.**

Never worry about having to defrost the freezer again. The NoFrost system prevents the build up of ice by automatically initiating the defrost operation as required. This also helps to maintain the appliance's energy efficiency.

### **LowFrost.**

LowFrost cuts ice build up by half which maintains energy efficiency, saving you energy and time.

### **SuperFreeze & SuperCool.**

Activating the SuperFreeze function before you go shopping lowers the temperature for a short period, so anything new put in the freezer is frozen quickly. SuperCool on your fridge performs a similar task, keeping everything at the right storage temperature.

\* Source: [www.sust-it.net](http://www.sust-it.net).





# More space for keeping food fresh for longer.

Flexible to fit your kitchen, our refrigeration options let you decide your own fridge and freezer capacity. And smart technology keeps your food as fresh as possible for as long as possible.

## Perfect pairs.

You can now personalise your fridge and freezer to suit your kitchen perfectly. Thanks to our clever design, you can purchase single door fridges and freezers to be combined to give you just the right capacity.

## Your perfect combination.

In addition to side-by-side installation, it is also possible to install our fridges above the freezers, therefore using up less room in the kitchen, and making it possible to choose a larger fridge capacity than a standard fridge-freezer would allow.

There are two different kinds of hinges: a sliding hinge that allows the hinged furniture door to be mounted at the kitchen cabinet body, while with a fixed/flat hinge the furniture door can be mounted at the appliance door. While sliding hinges are great value, easy to install and unaffected by the weight of the door, fixed/flat hinges can be soft closing giving easy access to the appliance's interior.

If you're replacing an appliance, always ensure that you choose a model with the same type of hinge\*.

## Quietly does it.

As there could be many small and larger hands opening and shutting the fridge door, it's nice to know that we've integrated **SoftClosing** doors in many models.

## Fresher for up to twice as long.

The **VitaFresh** vegetable drawer features a humidity controller which allows you to lock in moisture. This preserves vitamins and flavour in fruit and vegetables so they last up to twice as long. You save time by making fewer shopping trips, and as food lasts longer it's less likely to be thrown away.



## Save time with flexible storage.

Put away the weekly shop more easily, and get what you need faster too, thanks to height adjustable shelves and fully extendable drawers.



## More space.

Our freezers are extra spacious meaning you will find it easy to fit everything in – perfect for busy households. The extra large **BigBox** is big enough for large bulky items.

\* See full details for over / under combinations in the Product Specification section at the back of the brochure.

# Fridge freezers

Serie | 6

++

KIN86AD30G

Energy  
A++

NoFrost

Capacity  
255L

Energy Efficiency A++

NoFrost no need to defrost

Total Capacity 255 litres

## Another job off the list.

Never worry about defrosting the freezer again. The NoFrost system prevents the build up of ice by automatically initiating the defrost operation only when it's needed, also helping to maintain energy efficiency.



Specifications

- Fixed/flat hinge
- LED light
- VitaFresh drawer
- SuperFreeze
- Auto defrost fridge
- Electronic LED temperature control
- 5 removable glass shelves
- Dimensions (H x W x D): 177.2 x 55.8 x 54.5cm

Serie | 6

++

KIN85AF30G

Energy  
A++

NoFrost

Capacity  
246L

Specifications

- Fixed/flat hinge
- LED light
- VitaFresh drawer
- SuperFreeze & SuperCool
- Auto defrost fridge
- Electronic LED temperature control
- 4 removable glass shelves
- Dimensions (H x W x D): 177.2 x 55.8 x 54.5cm



Energy Efficiency A++

NoFrost no need to defrost

Total Capacity 246 litres

KIS87AF30G

Energy  
A++

LowFrost

Capacity  
270L

Specifications

- Fixed/flat hinge
- LED light
- VitaFresh drawer
- SuperFreeze & SuperCool
- Auto defrost fridge
- Electronic LED temperature control
- 5 removable glass shelves
- Dimensions (H x W x D): 177.2 x 55.8 x 54.5cm



Energy Efficiency A++

LowFrost little need to defrost

Total Capacity 270 litres



## Need to know more?

For in-depth appliance details please refer to the **Product Specification** section at the back of this brochure.

To understand more about the innovative features on our appliances visit **[bosch-home.co.uk](http://bosch-home.co.uk)**

### Serie | 6



#### KIS86AF30G



##### Specifications

- Fixed/flat hinge
- LED light
- VitaFresh drawer
- SuperFreeze & SuperCool
- Auto defrost fridge
- Electronic LED temperature control
- 5 removable glass shelves
- Dimensions (H x W x D): 177.2 x 55.8 x 54.5cm



**Energy Efficiency** A++

**LowFrost** little need to defrost

**Total Capacity** 265 litres

### Serie | 4



#### KIN86VF30G



##### Specifications

- Fixed/flat hinge
- LED light
- Multibox container
- SuperFreeze
- 3 transparent freezer drawers, 1 BigBox
- Dimensions (H x W x D): 177.2 x 53.8 x 54.2cm



**Energy Efficiency** A++

**LowFrost** little need to defrost

**Total Capacity** 255 litres

## Fridge freezers

## Serie | 4



## KIV87VF30G



## Specifications

Fixed/flat hinge

LED light

Multibox container

SuperFreeze

2 transparent freezer drawers, 1 BigBox

LED electronic control

5 removable glass shelves

Dimensions (H x W x D):  
177.2 x 54.1 x 54.5cm

## KIV87VS30G



## Specifications

Sliding hinge

LED light

Multibox container

SuperFreeze

2 transparent freezer drawers, 1 BigBox

LED electronic control

5 removable glass shelves

Dimensions (H x W x D):  
177.2 x 54.1 x 54.5cm**Energy Efficiency** A++**LowFrost** little need to defrost**Total Capacity** 272 litres**Energy Efficiency** A++**LowFrost** little need to defrost**Total Capacity** 272 litres

## Serie | 4



## KIV86VS30G



## Specifications

Sliding hinge

LED light

Multibox container

SuperFreeze

3 transparent freezer drawers, 1 BigBox

LED electronic control

4 removable glass shelves

Dimensions (H x W x D):  
177.2 x 54.1 x 54.5cm

## KIV85VF30G



## Specifications

Fixed/flat hinge

LED light

Multibox container

SuperFreeze

4 transparent freezer drawers, 1 BigBox

LED electronic control

4 removable glass shelves

Dimensions (H x W x D):  
177.2 x 54.1 x 54.5cm**Energy Efficiency** A++**LowFrost** little need to defrost**Total Capacity** 267 litres**Energy Efficiency** A++**LowFrost** little need to defrost**Total Capacity** 259 litres



# Fridge freezers

## Serie | 4



### KIV85VS30G



#### Specifications

- Sliding hinge
- LED light
- Multibox container
- 4 transparent freezer drawers, 1 BigBox
- LED electronic control
- 4 removable glass shelves
- Dimensions (H x W x D): 177.2 x 54.1 x 54.5cm



**Energy Efficiency** A++

**LowFrost** little need to defrost

**Total Capacity** 259 litres

## Serie | 2

### KIV32X23GB



#### Specifications

- Sliding hinge
- 25W light
- Multibox container
- Manual defrost freezer
- LED electronic control
- 3 removable glass shelves
- Dimensions (H x W x D): 177.2 x 54.1 x 54.5cm



**Energy Efficiency** A+

**Total Capacity** 255 litres

## Serie | 2

### KIV38X22GB



#### Specifications

- Sliding hinge
- Multibox container
- Auto defrost fridge
- Manual defrost freezer
- LED electronic control
- 5 removable glass shelves
- Dimensions (H x W x D): 177.2 x 54.1 x 54.5cm



**Energy Efficiency** A+

**Total Capacity** 277 litres

## Serie | 8



### GIN38A55GB



#### Specifications

- LED light
- SuperFreeze
- Auto defrost freezer
- Optical & acoustical door open signal
- LED electronic control
- 5 freezer drawers and 2 flaps
- Soft close hinge
- Dimensions (H x W x D): 177.2 x 55.6 x 54.5cm



**Energy Efficiency** A+

**Total Capacity** 212 litres

## Fridges &amp; freezers

## Serie | 6



## KIR81AF30G

Energy  
**A++**

Capacity  
**319L**

## Specifications

Fixed/flat hinge

LED light

VitaFresh drawer

Easy access shelf

Vario shelf

Electronic LED display

7 removable glass shelves

Dimensions (H x W x D):  
177.2 x 55.8 x 54.5cm



**Energy Efficiency** A++

**Total Capacity** 319 litres

## Serie | 6



## KIL82AF30G

Energy  
**A++**

Capacity  
**286L**

## Specifications

Fixed/flat hinge

LED light

VitaFresh drawer

Manual defrost freezer

Electronic LED display

5 removable glass shelves

Ice box

Dimensions (H x W x D):  
177.2 x 55.8 x 54.5cm



**Energy Efficiency** A++

**Total Capacity** 286 litres

## Serie | 4



## KIR81VS30G

Energy  
**A++**

Capacity  
**319L**

## Specifications

Sliding hinge

LED light

2 x multibox containers

LED electronic control

7 removable glass shelves

Dimensions (H x W x D):  
177.2 x 54.1 x 54.5cm



**Energy Efficiency** A++

**Total Capacity** 319 litres

## Serie | 4



## KIL82VS30G

Energy  
**A++**

Capacity  
**286L**

## Specifications

Sliding hinge

SuperCool function

Auto defrost fridge

Ice box

2 x multibox containers

LED electronic control

5 glass shelves

2 multibox containers

Dimensions (H x W x D):  
177.2 x 54.1 x 54.5cm



**Energy Efficiency** A++

**Total Capacity** 286 litres

# Fridges & freezers

## Serie | 6



### GIN81AE30G



#### Specifications

Fixed/flat hinge

2 x BigBox frozen food drawers; for storage of large food items

Super freezing function with manual deactivation

Electronic temperature control

5 transparent freezer drawers and 2 flaps

Dimensions (H x W x D):  
177.2 x 54.1 x 54.5cm



**Energy Efficiency** A++

**NoFrost** no need to defrost

**Total Capacity** 215 litres

## Serie | 6



### KIR41AD30G



#### Specifications

Fixed/flat hinge

LED light

VitaFresh drawer

Easy access shelf

Soft close hinge

6 removable glass shelves

Dimensions (H x W x D):  
122.1 x 55.8 x 54.5cm



**Energy Efficiency** A++

**Total Capacity** 211 litres

## Serie | 6



### KIR41AF30G



#### Specifications

Fixed/flat hinge

LED light

VitaFresh drawer

6 removable glass shelves

Dimensions (H x W x D):  
122.1 x 55.8 x 54.5cm



**Energy Efficiency** A++

**Total Capacity** 211 litres

## Serie | 4



### KIL42VS30G



#### Specifications

Sliding hinge

LED light

Multibox container

Manual defrost freezer

LED electronic control

5 removable glass shelves

Dimensions (H x W x D):  
122.1 x 53.8 x 54.5cm



**Energy Efficiency** A++

**Total Capacity** 195 litres

## Fridges &amp; freezers

## Serie | 4



## KIR41VS30G

Energy  
**A++**

Capacity  
**211L**

## Specifications

Sliding hinge

LED light

Multibox container

Easy access shelf

LED electronic control

6 removable glass shelves

Dimensions (H x W x D):  
122.1 x 53.8 x 54.5cm



## Serie | 2



## KIR24V20GB

Energy  
**A+**

Capacity  
**221L**

## Specifications

Sliding hinge

1 x 15W light

Mechanical control

6 removable glass shelves

Dimensions (H x W x D):  
122.1 x 54.1 x 54.2cm



Energy Efficiency A++

Total Capacity 211 litres

Energy Efficiency A+

Total Capacity 221 litres

## Serie | 6



## GIN41AE30G

Energy  
**A++**

NoFrost

Capacity  
**132L**

## Specifications

Fixed/flat hinge

BigBox frozen food drawers;  
for storage of large food  
items

Super freezing function

Electronic temperature  
control

4 transparent freezer  
drawers and 1 flap

Dimensions (H x W x D):  
122.1 x 55.8 x 54.5cm



## Serie | 4



## KIR31VS30G

Energy  
**A++**

LowFrost

Capacity  
**172L**

## Specifications

LED light

Multibox container

SuperCool function

LED electronic control

4 glass shelves

Dimensions (H x W x D):  
102.1 x 56 x 55cm



Energy Efficiency A++

NoFrost no need to defrost

Total Capacity 132 litres

Energy Efficiency A++

LowFrost little need to defrost

Total Capacity 172 litres

# Fridges & freezers

## Serie | 6



### GIN31AE30G



#### Specifications

Fixed/flat hinge

Super freezing function

Electronic temperature control

3 transparent freezer drawers and 1 flap

Dimensions (H x W x D):  
102.1 x 55.8 x 54.5cm



## Serie | 6



### KIR21AF30G



#### Specifications

Fixed/flat hinge

LED light

VitaFresh drawer

Electronic LED display

4 removable glass shelves

Dimensions (H x W x D):  
87.4 x 55.8 x 54.5cm



**Energy Efficiency** A++

**NoFrost** no need to defrost

**Total Capacity** 102 litres

**Energy Efficiency** A++

**Total Capacity** 144 litres

## Serie | 4



### KIL22VF30G



#### Specifications

Fixed/flat hinge

LED light

Multibox container

Manual defrost freezer

Easy access shelf

Vario shelf

Ice box

3 removable glass shelves

Dimensions (H x W x D):  
87.4 x 54.1 x 54.5cm



## Serie | 4



### KIR21VF30G



#### Specifications

Fixed/flat hinge

LED light

Multibox container

Easy access shelf

Vario shelf

4 removable glass shelves

Dimensions (H x W x D):  
87.4 x 53.8 x 54.2cm



**Energy Efficiency** A++

**Total Capacity** 124 litres

**Energy Efficiency** A++

**Total Capacity** 144 litres

## Fridges &amp; freezers

## Serie | 4



## KIL22VS30G

Energy  
**A<sup>++</sup>**

Capacity  
**124L**

## Specifications

Sliding hinge

LED light

Multibox container

Manual defrost freezer

Ice box

3 removable glass shelves

Dimensions (H x W x D):  
87.4 x 54.1 x 54.5cm



## Serie | 4



## KIR21VS30G

Energy  
**A<sup>++</sup>**

Capacity  
**144L**

## Specifications

Sliding hinge

LED light

Multibox container

Easy access shelf

Vario shelf

4 removable glass shelves

Dimensions (H x W x D):  
87.4 x 53.8 x 54.2cm



**Energy Efficiency** A<sup>++</sup>

**Total Capacity** 124 litres

**Energy Efficiency** A<sup>++</sup>

**Total Capacity** 144 litres

## Serie | 2

## KIR18V20GB

Energy  
**A<sup>+</sup>**

Capacity  
**150L**

## Specifications

Sliding hinge

1 x 15W light

Multibox container

Auto defrost fridge

Mechanical control

4 removable glass shelves

Dimensions (H x W x D):  
87.4 x 54.1 x 54.2cm



## Serie | 4



## GID18A50GB

Energy  
**A<sup>+</sup>**

Capacity  
**94L**

## Specifications

Fixed/flat hinge

SuperFreeze

Manual defrost freezer

Mechanical control

4 freezer drawers

Dimensions (H x W x D):  
87.4 x 54.1 x 54.2cm



**Energy Efficiency** A<sup>+</sup>

**Total Capacity** 150 litres

**Energy Efficiency** A<sup>+</sup>

**Total Capacity** 94 litres



## Fridges & freezers

### Serie | 4



#### GID18A20GB

Energy  
**A<sup>+</sup>**

Capacity  
**94L**

##### Specifications

Sliding hinge

Manual defrost freezer

Mechanical control

4 freezer drawers

Dimensions (H x W x D):  
87.4 x 54.1 x 54.2cm



**Energy Efficiency** A<sup>+</sup>

**Total Capacity** 94 litres

## Built-under fridges & freezers

### Serie | 6



#### KUL15A60GB

Energy  
**A<sup>++</sup>**

Capacity  
**123L**

##### Specifications

Fixed/flat hinge

1 x 25W light

Multibox container

Auto defrost fridge

Ice box

Mechanical control

2 removable glass shelves

Dimensions (H x W x D):  
82 x 59.8 x 54.8cm



**Energy Efficiency** A<sup>++</sup>

**Total Capacity** 123 litres

### Serie | 6



#### KUR15A50GB

Energy  
**A<sup>+</sup>**

Capacity  
**137L**

##### Specifications

Fixed/flat hinge

1 x 25W

Multibox container

Auto defrost fridge

Mechanical control

3 removable glass shelves

Dimensions (H x W x D):  
82 x 59.8 x 54.8cm



**Energy Efficiency** A<sup>+</sup>

**Total Capacity** 137 litres

### Serie | 6



#### GUD15A50GB

Energy  
**A<sup>+</sup>**

Capacity  
**98L**

##### Specifications

Fixed/flat hinge

Manual defrost freezer

Mechanical control

3 freezer drawers

Dimensions (H x W x D):  
82 x 59.8 x 54.8cm



**Energy Efficiency** A<sup>+</sup>

**Total Capacity** 98 litres

## American style fridge freezers

## Serie | 8



## KAN92LB35G



## Specifications

Electronic control with LED display

2 VitaFresh and 1 multibox container

1 EasyLift glass shelf

MultiAirflow system

LED light

4 safety glass shelves in fridge

2 freezer drawers on telescopic rails and 4 shelves

SuperCool and SuperFreeze

Dimensions (H x W x D):  
175.6 x 91 x 72.5 cm

Energy Efficiency A++

NoFrost no need to defrost

Total Capacity 592 litres

## Serie | 8



## KAD92AI30



## Specifications

Home Connect

Electronic control with LED display

2 VitaFresh and 1 multibox container

Ice and water dispenser

MultiAirflow system

LED light

4 safety glass shelves in fridge

2 transparent freezer drawers and 3 shelves

SuperCool and SuperFreeze

Ice and water

Dimensions (H x W x D):  
175.6 x 91 x 72.5 cm

Energy Efficiency A++

NoFrost no need to defrost

Total Capacity 541 litres

Home Connect control with your smart phone

# American style fridge freezers

Serie | 6

++

## KAG90AI20G

Energy  
**A+**

NoFrost

Capacity  
**522L**



### Specifications

HomeBar
Electronic control with LED display
FreshProtect Box
Ice and water dispenser
MultiAirflow system
LED light
3 safety glass shelves in fridge
2 transparent freezer drawers
SuperCool and SuperFreeze
2 multibox containers
Dimensions (H x W x D): 177 x 91 x 72 cm

Energy Efficiency	A+
NoFrost	no need to defrost
Total Capacity	522 litres

Serie | 6

++

## KAD90VI20G

Energy  
**A+**

NoFrost

Capacity  
**533L**



### Specifications

Electronic control with LED display
2 multibox containers
Ice and water dispenser
MultiAirflow system
LED light
4 safety glass shelves in fridge
2 transparent freezer drawers
SuperCool and SuperFreeze
Dimensions (H x W x D): 177 x 91 x 72 cm

Energy Efficiency	A+
NoFrost	no need to defrost
Total Capacity	533 litres

# American style fridge freezers

Serie | 6

++

## KAI90VI20G

Energy  
**A<sup>+</sup>**

NoFrost  


Capacity  
**523L**



### Specifications

- Noise level dB(A) re 1pw: 43
- Electronic control with LED display
- 2 multibox containers
- Ice and water dispenser
- No plumbing required
- MultiAirflow system
- LED light
- 3 safety glass shelves in fridge
- 2 transparent freezer drawers
- SuperCool and SuperFreeze
- Dimensions (H x W x D): 177 x 91 x 72 cm

Energy Efficiency **A<sup>+</sup>**

NoFrost no need to defrost

Total Capacity **523 litres**

Serie | 6

++

## KAD90VB20G

Energy  
**A<sup>+</sup>**

NoFrost  


Capacity  
**533L**



### Specifications

- Noise level dB(A) re 1pw: 43
- Electronic control with LED display
- 2 multibox containers
- Ice and water dispenser
- MultiAirflow system
- LED light
- 4 safety glass shelves in fridge
- 2 transparent freezer drawers
- SuperCool and SuperFreeze
- Dimensions (H x W x D): 177 x 91 x 72 cm

Energy Efficiency **A<sup>+</sup>**

NoFrost no need to defrost

Total Capacity **533 litres**

# American style fridge freezers

Serie | 4

+

## KAN90VI20G

Energy  
**A+**

NoFrost

Capacity  
**573L**



### Specifications

- Electronic control with LED display
- 2 multibox containers
- MultiAirflow system
- LED light
- 4 safety glass shelves in fridge
- 2 transparent freezer drawers and 4 shelves
- SuperCool and SuperFreeze
- Dimensions (H x W x D):  
177 x 91 x 72 cm

Energy Efficiency	A+
NoFrost	no need to defrost
Total Capacity	573 litres



Notes

Download a copy of our  
freestanding catalogue online  
at **bosch-home.co.uk**  
or call **0344 892 8979**



**Contact Bosch Customer Service**

To arrange an engineer visit, obtain  
product advice or order replacement  
spare parts or accessories visit  
**bosch-home.co.uk** or call  
**0344 892 8979**

Republic of Ireland customers  
should visit **bosch-home.ie**  
to arrange an engineer's visit,  
or to order spare parts and  
accessories, or call  
**(01) 450 2655**



**Bosch Home UK**



**@BoschHomeUK**

Calls are charged at the basic rate, please check with your telephone service provider for exact charges.

Disclaimer: This brochure is current as from the publication date and supersedes all previous brochures for these products. This brochure should not be regarded as an infallible guide nor as an offer for sale of any particular product. Whilst BSH Home Appliances Ltd believes that all information contained within this brochure is correct at the time of going to print, no representation or warranty, express or implied, is or will be made and no responsibility or liability is or will be accepted by BSH Home Appliances Ltd in relation to the accuracy or completeness of this information and any liability is expressly disclaimed. To the extent permitted by law, BSH Home Appliances Ltd expressly excludes: i) all conditions, warranties and other terms which might otherwise be implied by statute, common law or the law of equity and ii) any liability for any direct, indirect or consequential loss or damage (including, without limitation, damages for loss of business or loss of profits) arising in contract, tort or otherwise from the use of or reliance on any information contained within this brochure or from any action or decision taken as a result of such use or reliance. BSH Home Appliances Ltd reserves the right to modify technical data and all other information contained within this brochure without notice. All rights reserved. No part of this publication may be reproduced in any form or without the prior written permission of BSH Home Appliances Ltd. All colour variations are due to the limitations of the printing process. This brochure is printed on environment-friendly chlorine-free bleached paper.

April 2016

**BSH Home Appliances Limited**  
Grand Union House  
Old Wolverton Road, Wolverton  
Milton Keynes MK12 5PT  
**bosch-home.co.uk**

**BSH Home Appliances Limited**  
M50 Business Park  
Ballymount, Dublin 12  
**Tel: 1890 626 041**  
**bosch-home.ie**

