

# Freestanding Appliances

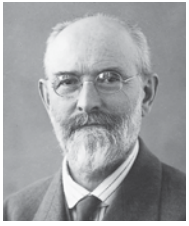
2016



**BOSCH**

Invented for life

# Who are Bosch?



“I have always acted according to the principle that it is better to lose money than trust. The integrity of my promises, the belief in the value of my products and in my word of honour have always had a higher priority to me than a transitory profit.”

Robert Bosch, 1921

For over 125 years, the Bosch name has been synonymous with engineering excellence. Our home appliances are renowned for their quality, reliability and performance which derives from our inherent, unflagging commitment and the painstaking thoroughness with which every unit is made. As you would expect from German engineering, there are no gimmicks or frills with our products – just pure, clean lines and beautiful, functional simplicity that will enhance any kitchen.

The values that shaped Robert Bosch's vision for his new company in 1886 are the same principles that guide the business today; never lose the trust of your customers, look after your staff and partners and change things for the better. It's what has kept Bosch at the forefront of the home appliance industry and what will keep it there in the future.



## Meet Karl, the Bosch Engineer.

Karl has devoted his working life to Bosch and ensures that feedback from customers continues to help shape our products of the future.

His detailed knowledge of our products and long experience can be accessed by customers who are looking to purchase a new appliance.

To understand more about the innovative features on our appliances throughout this brochure, visit our website [bosch-home.co.uk](http://bosch-home.co.uk)

Follow us to learn more on:



[facebook.com/  
BoschHomeUK](https://facebook.com/BoschHomeUK)



[twitter.com/  
BoschHomeUK](https://twitter.com/BoschHomeUK)



[youtube.com/  
BoschAppliancesUK](https://youtube.com/BoschAppliancesUK)



[pinterest.com/  
boschhomeuk](https://pinterest.com/boschhomeuk)

# Contents

Customer service	2-3
Home Connect	4-5

---

## Home Laundry 06-17

Introducing the new Bosch home laundry range	6-9
Washing machines	10-13
Tumble dryers	14-16
Washer dryers	17

---

## Dishwashers 18-25

Introducing our advanced dishwasher range	18-21
60cm dishwashers	22-24
45cm dishwashers	25

---

## Refrigeration 26-53

Introducing the Bosch refrigeration range	26-29
Fridge freezers	30-38
American style fridge freezers	40-43
Fridges & freezers	44-50
Wine coolers	51
Chest freezers	52-53

---

## Small appliances 54-70

Floorcare	56-58
Garment care	59-61
Kitchenware	62-70

---

## Specification guide 73-87



# Service you can rely on.

For help with your home  
appliance, trust Bosch  
Customer Service.



## Arrange an engineer visit.

Our appliances are manufactured to the highest standards, but if you do need a visit from an engineer we are here to help. We have teams of locally based engineers around the country – employed and trained by Bosch\*. This gives them unrivalled expertise and knowledge of our appliances. We repair appliances both in and out of guarantee. All repairs are analysed in advance by a technical team so that the parts likely to be needed to complete the repair are sent to the engineer's van the night before the visit.

To arrange an engineer visit to your home please call:

**0344 892 8979**

Lines are open 24 hours.

Calls are charged at the basic rate, please check with your telephone service provider for exact charges.

You can also arrange an engineer visit online: **[bosch-home.co.uk/bookonline](http://bosch-home.co.uk/bookonline)**

## Product advice.

If you need help using programmes or features, or need assistance selecting a new Bosch appliance from our current range, our product advice team can help.

You can call us on

**0344 892 8979**

or visit: **[bosch-home.co.uk](http://bosch-home.co.uk)** for frequently asked questions and helpful videos.

Calls will be answered 24 hours a day, seven days a week. You can contact our specialist advisors Monday to Friday 8am to 8pm, Saturday 8am to 4pm and Sunday 9am to 3pm.

## Register my appliance

We advise that you register your appliances so that we can contact you about any product updates. Visit [registermyappliance.org.uk](http://registermyappliance.org.uk) for more information.

You can also call Bosch directly to register your appliance on 0344 892 8979 (option 5). Please call us within 28 days of purchase to discuss the full range of options for extending your warranty.

## Visit the Bosch online store.

Find a comprehensive selection of accessories to help you get the most out of your appliance, along with our full range of replacement spare parts and cleaning & care products at the Bosch online store.

You can also purchase Tassimo hot drinks machines, vacuum cleaners, irons, steam stations, kettles, toasters and food preparation appliances directly from us online.



You can call us on

**0344 892 8979**

or visit: **[bosch-home.co.uk/store](http://bosch-home.co.uk/store)**

## Accessories.

Many appliances can be enhanced with optional extras, such as telescopic rails for ovens or special cookware for hobs.

When buying a Bosch home appliance, you know you are purchasing a quality, reliable product. However many appliances are used daily, so need cleaning and maintaining to keep them looking great and operating at peak performance.

Every one of our cleaning and care products has been thoroughly tested and approved for safe and effective use on your Bosch home appliance.

## Replacement spare parts.

We keep in stock a comprehensive range of replacement spare parts for our appliances for up to ten years. All our parts are original spare parts, not copies.

## Award-winning service.

Bosch Customer Service was proud to win the Domestic & General Total Excellence & Quality Award for 2015. The award is decided from surveys sent to customers and 94.5% described our service as excellent or good.



# Home Connect: Smart connectivity for an easier life.



The future has arrived and it's knocking on the front door. Home Connect brings smart technology to our kitchen appliances and connects them with a phone or tablet. So, whether it's turning the washing machine on remotely, or checking what is left in the fridge, these clever appliances give you complete control.



## Look out for our Home Connect models

### Welcome to your new digital home.

Remote control takes on a new meaning with Home Connect. You'll be able to connect to a number of your home appliances with your smart device while you're out. Monitor and control the temperature of your fridge freezer remotely, as well as checking its contents. Start your washing machine and dishwasher and monitor its progress through the cycles. And whether you're at home or not, the handy app will let you know the most suitable programme for your dishes, or your laundry.

You'll also be able to use your mobile device to turn on your oven remotely. The app will give you all the information you need about the cooking process, and will tell you when your meal is ready. How lovely to know your dinner is piping hot and ready to eat the moment you walk through the door.

### The world's coolest camera.

When it comes to your fridge, our innovative interior cameras let you sneak a peek at what you've got in. So, when you're at the shops and can't remember if you've got eggs, you can use your mobile device to take a look in your fridge and check.

### Discover a new world. CoffeeWorld.

Even your coffee machine can be connected to make your life easier. Clever technology lets you choose between a wide range of different coffee-making methods and select your favourite from the app's CoffeeWorld. And if you have guests, there's even a CoffeePlaylist feature that lets you enter all your guests' coffee orders.

 **Apple Store**

 **Google Play**

Home Connect is a service offered by Home Connect GmbH.  
For more information on Home Connect please  
visit [www.bosch-home.co.uk](http://www.bosch-home.co.uk)

# Introducing the new Bosch home laundry range.



## Serie | 8



Perfection in every detail, our **Serie 8** range of laundry appliances stand out from the crowd with superior quality, results and first class design. Discover cutting-edge features and extras such as **i-DOS** automatic dosing in our washing machines and the innovative **EcoBar Plus** with two LED display bars that indicate your water and energy consumption. Our Serie 8 hero models now include **ActiveOxygen™** and **Home Connect**.

## Serie | 6



Our **Serie 6** models strive for sustainability and appreciate the active lifestyle of you and your family. Appliances in this range offer you real benefits and energy efficient features combined with timeless design. **i-DOS** doses each load with millilitre precision, which not only delivers outstanding results but a host of savings, while **NightWash** allows you to take advantage of evening tariffs.

## Serie | 4



Easy to operate with family life in mind, our **Serie 4** range truly understands your requirements. Practical and straightforward to use, these appliances have simple functions and controls, whilst remaining safe and stylish. Now experience the same quiet and energy-efficient wash cycles as our premium models with **EcoSilence Drive™**.

The latest Bosch laundry appliances give you peace of mind when washing your clothes. With a range of advanced technologies across our models we have divided them into the three ranges below. Let us help choose the right Bosch laundry appliance for you.



Photograph shown for illustrative purposes.

## All our laundry appliances include the following features as standard:

### EcoSilence Drive™.

Our advanced motor producing maximum efficiency, economy, durability and performance whilst operating at exceptionally low levels of noise. We're so confident that it will deliver a quiet revolution that it comes with a 10-year guarantee.

### VarioPerfect™.

VarioPerfect™ technology means you can get full loads clean in just one hour\* by selecting SpeedPerfect, or select EcoPerfect and laundry comes out brilliantly clean using up to 66% less energy.\*\*

### ActiveWater™.

Bosch washing machines with ActiveWater™ technology measure exactly the right amount of water required for every load of laundry, so they never use a drop more than is needed.

### Energy efficiency.

Not only do our washing machines achieve great results for energy efficiency, now they can also show you how much you are saving. Our EcoBar Plus function does the thinking, so you don't have to.

### SuperQuick 15.

Turn around a full wash in just 15 minutes. Designed for a lightly soiled 2kg load (that's roughly 10 business shirts), this cycle packs in a wash, two rinse cycles and improved spinning, making it one of the shortest complete wash programmes of any machine on the market.

\* Compared to just over two and a half hours on EasyCare 40°C wash programme.

\*\* Compared to an EU label standard cotton 60°C programme.

# Save energy, quietly and economically.

Our freestanding laundry appliances are designed to perform perfectly, load after load. And our advanced technology cleans your clothes energy efficiently, then cleans itself.



Photograph shown for illustrative purposes.

## More washes between fill-ups.

**i-DOS** doses each load with millilitre precision, which not only delivers outstanding results but a host of savings compared to adding detergent manually. Up to 11 litres of detergent and 7,000 litres of water can be saved each year. It also cuts average cycle time by 14 minutes. Available on selected Serie 6 and Serie 8 models, i-DOS is even easier to activate via **DirectSelect** touch display found on selected Serie 6 models.

**Add detergent once for around 20 washes and i-DOS doses each wash precisely every time.**

## Hygienically clean at the touch of a button.

We've developed **ActiveOxygen™** to take special care of your favourite clothes – hygienically.

This clever system cleans your most delicate fabrics at low washing temperatures, protecting their colour while eliminating 99.99% of the bacteria and germs found in clothes, without the use of any chemical additives.

And for clothes that are essentially clean but just need a freshen up, choose **ActiveOxygen™ Refresh**. This 45 minute programme is even suitable for highly delicate fabrics, saving you a trip to the dry cleaners.

## Enjoy the quiet life.

Our latest washing machines with **EcoSilence Drive™** generate a noise level of just 47 decibels – that's quieter than the sound of the sea at 55 decibels. The modern world is noisy enough, so it's good to know that Bosch technology can help make the home environment a little oasis of calm.

## Save time. Save energy. With VarioPerfect™ you decide.



The battle against rising average energy and water bills\* starts here with **VarioPerfect™** technology. With every household in the UK facing increased living costs and a reduction in that most precious commodity – time – here at Bosch we have developed VarioPerfect™ technology for all our freestanding washing machines. Get full loads clean in just one hour\*\* by selecting **SpeedPerfect** or select **EcoPerfect** and laundry comes out brilliantly clean using up to 66% less energy.\*\*\*

## Raising the bar in energy-efficiency.



Not only do our washing machines achieve great results for energy efficiency, but now they can also show you how much you are saving. The intelligent **EcoBar** function does the thinking so you don't have to. **EcoBar Plus** indicates five possible levels of energy and water consumption, depending on the programme or option you've selected for your laundry. The fewer LEDs illuminated, the more resource you are saving.

## Self-cleaning. So you don't have to.

To run at peak efficiency the tumble dryer's condenser needs to be kept clean. The ground-breaking automatic **self-cleaning condenser system** uses water from the drying cycle to flush away lint and fluff, so you don't have to do it. That's one less job to worry about and it keeps the tumble dryer as energy efficient as the day you bought it.

\* Infrastructure investment: the impact on consumer bills. National Audit Office Press Release, 13 November 2013.

\*\* Compared to just over two and a half hours on Easycare 40°C wash programme.

\*\*\* Compared to an EU label standard cotton 60°C programme.

# Washing machines

Serie | 8

+++

WAWH8660GB

Energy  
A+++

-30%

9 kg

- Energy Efficiency A+++ -30%
- Capacity 9kg
- Spin Speed 1400rpm
- Home Connect control with your smart device

i-DOS.

More washes between fill-ups.

The i-DOS washing machine from Bosch has an intelligent dosing system that calculates how much detergent to add to each wash for you. Add all the detergent just once, and for the next 20 washes, i-DOS automatically measures the precise amount of detergent needed; meaning perfectly clean laundry guaranteed for every load, all with minimum effort from you.



Specifications

i-DOS

EcoSilence Drive™

EcoBar Plus

ActiveWater™

WaveDrum™

Noise level 47dB/71dB



Serie | 8

+++

WAYH8790GB

Energy  
A+++

-30%

9 kg



Specifications

AutoStain

EcoSilence Drive™

EcoBar Plus

ActiveWater™

WaveDrum™

Noise level 47dB/71dB

- Energy Efficiency A+++ -30%
- Capacity 9kg
- Spin Speed 1400rpm
- Home Connect control with your smart device

WAW28750GB

Energy  
A+++

-30%

9 kg



Specifications

ActiveOxygen™

EcoSilence Drive™

VarioPerfect™

WaveDrum™

EcoBar Plus

Noise level 47dB/71dB

- Energy Efficiency A+++ -30%
- Capacity 9kg
- Spin Speed 1400rpm



Want to find out more?

For in-depth appliance details please refer to the **Product Specification** section at the back of this brochure.

To understand more about the innovative features on our appliances visit **[bosch-home.co.uk](http://bosch-home.co.uk)**

## Serie | 8



### WAW32560GB



#### Specifications

EcoSilence Drive™  
VarioPerfect™  
AutoStain  
EcoBar Plus  
DrumClean with reminder function  
Noise level 47dB/71dB

### WAW28560GB



#### Specifications

EcoSilence Drive™  
VarioPerfect™  
AutoStain  
EcoBar Plus  
DrumClean with reminder function  
Noise level 47dB/71dB

**Energy Efficiency** A+++ -30%

**Capacity** 9kg

**Spin Speed** 1600rpm

**Energy Efficiency** A+++ -30%

**Capacity** 9kg

**Spin Speed** 1400rpm

# Washing machines

Serie | 6

++

## WAT28660GB



- Specifications
- i-DOS

EcoSilence Drive™

TouchScreen display

VarioPerfect™

EcoBar Plus

WaveDrum™

Noise level 49dB/74dB

Energy Efficiency	A+++ -30%
Capacity	8kg
Spin Speed	1400rpm

## WAT28420GB



- Specifications
- VarioPerfect™

EcoSilence Drive™

ActiveWater™

EcoBar Plus

DrumClean with reminder function

WaveDrum™

Noise level 51dB/77dB

Energy Efficiency	A+++ -30%
Capacity	8kg
Spin Speed	1400rpm

Serie | 6

++

## WAT24420GB



- Specifications
- VarioPerfect™

EcoSilence Drive™

ActiveWater™

EcoBar

DrumClean with reminder function

WaveDrum™

Noise level 51dB/74dB

Energy Efficiency	A+++ -30%
Capacity	8kg
Spin Speed	1200rpm

# Washing machines

## Serie | 4



### WAQ283S1GB



#### Specifications

VarioPerfect™  
EcoSilence Drive™  
ActiveWater™  
Allergy+  
WaveDrum™  
Noise level 51dB/77dB

**Energy Efficiency** A+++ -30%

**Capacity** 8kg

**Spin Speed** 1400rpm

### WAQ2836SGB



#### Specifications

VarioPerfect™  
EcoSilence Drive™  
ActiveWater™  
Allergy+  
WaveDrum™  
Noise level 51dB/77dB

**Energy Efficiency** A+++ -30%

**Capacity** 8kg

**Spin Speed** 1400rpm

## Serie | 4



### WAN28100GB



#### Specifications

VarioPerfect™  
EcoSilence Drive™  
ActiveWater™  
Allergy+  
DrumClean with reminder function  
Noise level 54dB/74dB

**Energy Efficiency** A+++ -10%

**Capacity** 7kg

**Spin Speed** 1400rpm

### WAN24100GB



#### Specifications

VarioPerfect™  
EcoSilence Drive™  
ActiveWater™  
Allergy+  
DrumClean with reminder function  
Noise level 54dB/74dB

**Energy Efficiency** A+++ -10%

**Capacity** 7kg

**Spin Speed** 1200rpm

# Heat pump condenser dryers

Serie | 8

+

+

+

### WTYH6790GB



- Specifications**
- SelfCleaning Condenser™
  - TFT Intuitive user interface
  - Sensitive drying
  - AntiVibration design
  - Noise level 64 dB

Energy Efficiency A++
Capacity 9kg
Home Connect control with your smart device

### WTWH7560GB



- Specifications**
- SelfCleaning Condenser™
  - Allergy+
  - Intuitive user display
  - Sensitive drying
  - AntiVibration design
  - Noise level 64 dB

Energy Efficiency A++
Capacity 9kg
Home Connect control with your smart device

Serie | 8

+

+

+

### WTW87560GB



- Specifications**
- SelfCleaning Condenser™
  - Allergy+
  - SensitiveDrying system
  - Intuitive user display
  - AntiVibration design
  - Noise level 64 dB

Energy Efficiency A++
Capacity 9kg

Serie | 6

+

+

### WTW85491GB



- Specifications**
- SelfCleaning Condenser™
  - Allergy+
  - SensitiveDrying system
  - AntiVibration design
  - Noise level 65 dB

Energy Efficiency A++
Capacity 8kg

## Heat pump condenser dryers

### Serie | 4



#### WTW863S1GB

Energy  
**A++**

7  
kg



##### Specifications

SelfCleaning Condenser™  
SensitiveDrying system  
AntiVibration design  
Noise level 65 dB

**Energy Efficiency** A++

**Capacity** 7kg

#### WTH85200GB

Energy  
**A++**

8  
kg



##### Specifications

EasyClean Filter  
Allergy+  
SensitiveDrying system  
AutoDry  
AntiVibration design  
Noise level 65 dB

**Energy Efficiency** A++

**Capacity** 8kg

## Condenser dryers

### Serie | 6



#### WTG86401GB

Energy  
**B**

8  
kg



##### Specifications

Allergy+  
SensitiveDrying system  
AutoDry  
Easy to use – large display  
AntiVibration design  
Noise level 65 dB

**Energy Efficiency** B

**Capacity** 8kg

### Serie | 4



#### WTN85200GB

Energy  
**B**

7  
kg



##### Specifications

Allergy+  
AutoDry  
SensitiveDrying system  
AntiVibration design  
Noise level 65 dB

**Energy Efficiency** B

**Capacity** 7kg

Available September 2016

# Vented dryer

Serie | 4 

## WTA74200GB



### Specifications

- Sensitive Drying system
- AutoDry
- Display for time remaining
- AntiVibration design
- Noise level 65 dB

Energy Efficiency C
Capacity 7kg

# Washer dryers

## Serie | 6



### WVH28422GB



#### Specifications

AirCondensation Technology

EcoSilence Drive™

HygieneCare

AutoDry

SoftSurge drum system

Noise level 48db/74db

### WVG3046SGB



#### Specifications

EcoSilence Drive™

Allergy+

HygieneCare

VarioPerfect™

SoftSurge drum system

Noise level 52db/74db

**Energy Efficiency** A Energy / B Spin

**Capacity** 7kg washing, 4kg drying

**Spin Speed** 1400rpm

**Energy Efficiency** A Energy / B Spin

**Capacity** 8kg washing, 5kg drying

**Spin Speed** 1500rpm

## Serie | 6



### WVG30461GB



#### Specifications

EcoSilence Drive™

Allergy+

HygieneCare

VarioPerfect™

SoftSurge drum system

Noise level 52dB/74dB

**Energy Efficiency** A Energy / B Spin

**Capacity** 8kg washing, 5kg drying

**Spin Speed** 1500rpm

# Introducing our advanced dishwasher range.

All our dishwashers offer a range of advanced technologies as standard and additional options across the range to suit your individual requirements. To help you choose the right Bosch dishwasher we have divided them into the three ranges below.

## Serie | 8



Our **Serie 8** range combines cutting-edge design and advanced technologies for optimum cleaning performance. Their **A+++** rating is enhanced by **Zeolith**, which absorbs moisture before releasing it as hot air for energy efficient drying. Exceptionally quiet, offering additional storage and flexible loading solutions.

## Serie | 6



Our **Serie 6** range comes packed with technology, from energy and water saving modes to quick washes for when time is of a premium. They also feature **VarioFlex Plus** and flexible loading solutions for accommodating dishes of all shapes and sizes.

## Serie | 4



Our **Serie 4** models offer great value for money but do not compromise on Bosch build quality. They combine advanced energy and resource saving features and in addition offer VarioFlex baskets with foldable racks in the lower basket.



**All our dishwashers include the following features as standard:**

**EcoSilence Drive™.**

Our advanced motor has been built to provide you with maximum efficiency, economy, and durability whilst operating.

**ActiveWater™.**

ActiveWater™ technology in all our dishwashers means it can take as little as 6.5 litres\* of water to clean 13 place settings for a three-course meal\*\*. That's less water than it takes to fill a standard-sized kitchen sink.

**VarioSpeed.**

When you need to save time, VarioSpeed will get all your dishes perfectly clean and dry in just 90 minutes – that's up to 66% quicker than a standard wash programme.

**DosageAssist.**

Get the most out of your detergent with DosageAssist; a small area at the front of the top basket that catches the tablet when it's released during the cycle. It controls how the tablet is dissolved for optimum performance.

**10 year anti-rust warranty.**

Our appliances are made from top quality materials and in addition to our standard appliance warranty, we provide a free-of-charge warranty against rusting-through of the dishwasher's inner cavity.

\* 6.5 litre water consumption on standard Economy 50°C programme. Model SMS69M22GB.

\*\* Three-course meal as defined by dinner, soup and dessert plate, cup and saucer, glass, knife, fork, soup, tea and dessert spoons for each place setting as well as 1 serving plate, 2 serving bowls, 2 serving spoons, 1 serving fork and 1 sauce spoon.

Model shown SMS88TI26E

# Save more time, energy and water than ever before.

If you want sparkling clean dishes while keeping your energy bills low, our Bosch dishwashers are a must-have in your kitchen.

Technology to save you time.



Our **VarioSpeed** option reduces programme times without compromising on quality. So you still get hygienically clean and dry dishes but in just 90 minutes – ideal for busy households and entertaining.

**Choose VarioSpeed Plus and your dishes will be clean in about a third of the time.**



No-one can outshine us on energy-saving.



Our **Zeolith** models contain naturally occurring minerals that convert moisture to heat. This gentle heat is perfect for drying plastics. This drying process uses a minimal amount of energy, so now you can get the best drying results with the highest possible energy rating of **A+++**. Models with the **Extra Dry** function allow you to select an extended drying phase. Perfect for loads containing silicon utensils, picnicware and other harder-to-dry items.

The key to flexibility.



The **VarioFlex Pro** rack system offers maximum flexibility and allows the dishwasher to be adapted to any load that suits you, while still securing everything in place.

The **VarioDrawer** is an additional loading level, ideal for cutlery and smaller items, freeing up space in the rest of the dishwasher.

The adjustable 3-stage **Rackmatic™** system allows the upper basket to be moved up and down to fit more in the top or bottom basket as required.

### Ultimate protection for your glasses.

For a delicate yet thorough clean, the **wine glass holder accessory** can hold four long-stemmed wine glasses. Your glasses will be held securely at the optimum angle for washing and drying, preventing them from knocking into each other. Suitable for use with VarioFlex, VarioFlexPlus and VarioFlex Pro baskets.

2 washes in 1.



Delivering an intensive 70°C wash on the bottom basket while the top basket carries on as normal, the **intensive zone option** will clean baked on pots and pans, glasses and dishes at the same time. There's no need to wash two loads or to slip on the rubber gloves and wash half up by hand.



### Bosch recommends Finish for dishwashers.

Bosch has tested and recommends using Finish dishwashing products. For the ultimate clean and shine, plus added protection to help to prevent build up of limescale in your machine, Bosch recommends new Finish Quantum Max.



60cm dishwashers

Serie | 8+++

SMS88TI26E

Energy A+++

13

Water 7.5L

Energy Efficiency A+++

Place Settings 13

ActiveWater™ only uses 7.5 litres

Home Connect control with your smart device

Unique Zeolith technology brings perfect drying with A+++ energy efficiency.

Naturally occurring Zeolith drying minerals in our Serie 8 dishwashers help save energy by converting moisture to heat so that less electricity is required. Heat produced in this way gives perfect drying results, even for plastics and other harder-to-dry items.



Serie | 8+++

SMS88TW02G

Energy A+++

14

Water 9.5L

Specifications

Zeolith for excellent drying

VarioDrawer Pro

VarioFlex Pro baskets

8 programmes, including Auto and quick wash

Intensive Zone flexible wash

Half Load option

High resolution touch display

“Finish at” clock

VarioSpeed Plus

42dB – very quiet

Energy Efficiency A+++

Place Settings 14

ActiveWater™ only uses 9.5 litres

Serie | 6++

SMS69M12GB

Energy A++

14

Water 9.5L

Specifications

VarioDrawer Plus

VarioFlex Plus baskets

6 programmes, including delicate and quick wash

Intensive Zone flexible wash

Half Load option

VarioSpeed Plus

38dB – extremely quiet

Energy Efficiency A++

Place Settings 14

ActiveWater™ only uses 9.5 litres



### Specifications

Zeolith for excellent drying

VarioDrawer Pro – 3rd loading level.

VarioFlex Pro baskets

8 programmes, including Auto

Intensive Zone flexible wash

Half Load option

High resolution display & touch operation

“Finish at” clock

VarioSpeed Plus

42dB – very quiet



Want to find out more?

For in-depth appliance details please refer to the **Product Specification** section at the back of this brochure.

To understand more about the innovative features on our appliances visit **[bosch-home.co.uk](http://bosch-home.co.uk)**

Dishwashers

## Serie | 6



### SMS69M22GB



### Specifications

VarioDrawer

VarioFlex Plus baskets

6 programmes, including delicate and Turbo Speed

Intensive Zone flexible wash

Half Load option

VarioSpeed Plus

44dB – quiet

### SMS53M02GB



### Specifications

VarioFlex baskets

5 programmes including quick wash

Intensive Zone flexible wash

Half Load option

VarioSpeed

46dB



**Alternative colour**  
**SMS53M08GB** Silver Inox

**Energy Efficiency** A++

**Place Settings** 13

**ActiveWater™** only uses 6.5 litres

**Energy Efficiency** A++

**Place Settings** 13

**ActiveWater™** only uses 9.5 litres

## 60cm dishwashers

Serie | 4



### SMS50C12UK\*



#### Specifications

5 programmes including quick wash

Half Load option

VarioSpeed

48dB



#### Alternative colours

**SMS50C18UK\*\*** Silver Inox

**SMS50C26UK** Black

**Energy Efficiency** A++

**Place Settings** 12

**ActiveWater™** only uses 9.5 litres

\* Changing to **SMS50C22GB** in August 2016.

\*\* Changing to **SMS50C28UK** in August 2016.

## 45cm dishwashers

### Serie | 6



#### SPS59T02GB



##### Specifications

VarioDrawer

VarioFlex Plus baskets

5 programmes including quick wash

Intensive Zone flexible wash

VarioSpeed Plus

Extra Dry option

DuoPower - twin spray arms for perfect water coverage

44dB - quiet

**Energy Efficiency** A+

**Place Settings** 10

**ActiveWater™** only uses 9.5 litres

#### SPS53M02GB



##### Specifications

VarioFlex baskets

5 programmes including quick wash

Intensive Zone flexible wash

VarioSpeed

DuoPower - twin spray arms for perfect water coverage

48dB



**Alternative colour**

**SPS53M08GB** Silver Inox

**Energy Efficiency** A+

**Place Settings** 9

**ActiveWater™** only uses 9.5 litres

## Compact dishwasher

### Serie | 4



#### SPS40E12GB



##### Specifications

4 programmes including quick wash

VarioSpeed

DuoPower - twin spray arms for perfect water coverage

48dB - extremely quiet

**Energy Efficiency** A+

**Place Settings** 9

**ActiveWater™** only uses 9.5 litres

### Serie | 4



#### SKS62E22EU



##### Specifications

6 programmes including delicate and quick wash

VarioSpeed

Extra Dry option

48dB

**Energy Efficiency** A+

**Place Settings** 6

**ActiveWater™** only uses 8 litres

Download a copy of our  
built-in catalogue online  
at **bosch-home.co.uk**  
or call **0344 892 8979**



**Contact Bosch Customer Service**

To arrange an engineer visit, obtain  
product advice or order replacement  
spare parts or accessories visit  
**bosch-home.co.uk** or call  
**0344 892 8979**

Republic of Ireland customers  
should visit **bosch-home.ie** to  
arrange an engineer's visit,  
or to order spare parts and  
accessories, or call  
**(01) 450 2655**



**Bosch Home UK**



**@BoschHomeUK**

Calls are charged at the basic rate, please check with your telephone service provider for exact charges.

Disclaimer: This brochure is current as from the publication date and supersedes all previous brochures for these products. This brochure should not be regarded as an infallible guide nor as an offer for sale of any particular product. Whilst BSH Home Appliances Ltd believes that all information contained within this brochure is correct at the time of going to print, no representation or warranty, express or implied, is or will be made and no responsibility or liability is or will be accepted by BSH Home Appliances Ltd in relation to the accuracy or completeness of this information and any liability is expressly disclaimed. To the extent permitted by law, BSH Home Appliances Ltd expressly excludes: i) all conditions, warranties and other terms which might otherwise be implied by statute, common law or the law of equity and ii) any liability for any direct, indirect or consequential loss or damage (including, without limitation, damages for loss of business or loss of profits) arising in contract, tort or otherwise from the use of or reliance on any information contained within this brochure or from any action or decision taken as a result of such use or reliance. BSH Home Appliances Ltd reserves the right to modify technical data and all other information contained within this brochure without notice. All rights reserved. No part of this publication may be reproduced in any form or without the prior written permission of BSH Home Appliances Ltd. All colour variations are due to the limitations of the printing process. This brochure is printed on environment-friendly chlorine-free bleached paper.

April 2016

**BSH Home Appliances Limited**  
Grand Union House  
Old Wolverton Road, Wolverton  
Milton Keynes MK12 5PT  
**bosch-home.co.uk**

**BSH Home Appliances Limited**  
M50 Business Park  
Ballymount, Dublin 12  
**Tel: 1890 626 041**  
**bosch-home.ie**

