



Connect Your Oven to the Future.
Quick-start Guide



The future begins now in your home!
We are glad you have chosen Home Connect *

Congratulations on your home appliance of tomorrow, which will make your everyday life easier and more enjoyable.

More convenient.

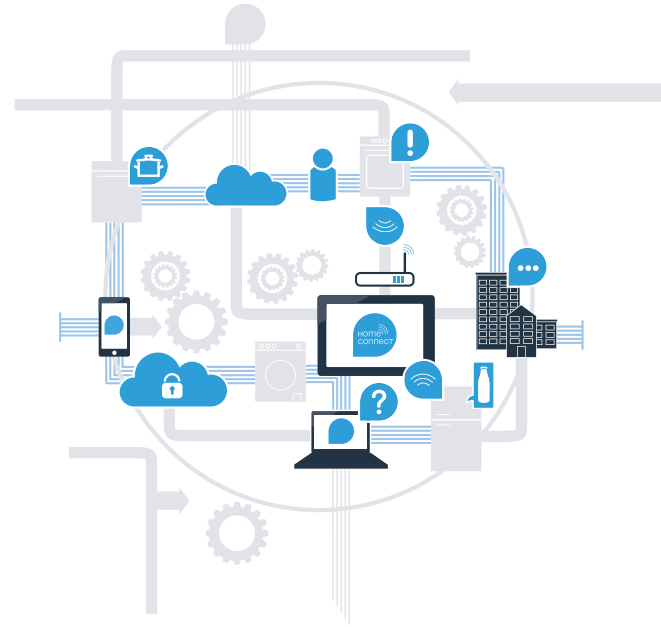
Home Connect lets you control your home appliances whenever you want, wherever you want. Simply and intuitively using a smartphone or tablet. This saves you time and effort, and you have more time for the things that are truly important to you.

More straightforward.

Using the app's cleverly designed touchscreen, you can adjust operating settings such as audible signals or even individual programs. It's even simpler and more straightforward than on the appliance itself, plus you have direct access to a host of data, operating manuals, and even instructional videos.

More connected.

Let yourself be inspired! Discover numerous extras that have been tailor-made just for your appliances: recipe collections, tips on using your appliances, and much more. Compatible accessories can be ordered at any time with just a few clicks.



* The availability of the Home Connect function depends on the availability of Home Connect services in your country. Home Connect services are not available in every country. You can find more information on this at www.home-connect.com.

What do you need to connect your oven to Home Connect?

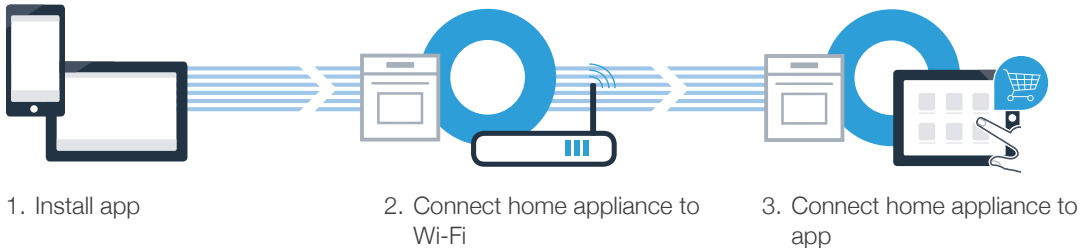
- A smartphone or tablet, equipped with the latest version of the corresponding operating system.
- A home network signal (Wi-Fi) at the location where the home appliance is located.

Name and password for your home network (Wi-Fi):

Network name (SSID): _____

Password (key): _____

Three steps to make your daily routine easier:



Step 1: Installing the Home Connect app



A On your smartphone or tablet, go to the App Store (Apple devices) or Google Play Store (Android devices).



B Enter **"Home Connect"** in the store's search field.



C Select the „Home Connect (America)“ app published by BSH Home Appliances Corporation and install it on your smartphone or tablet.



D Start the app and create your Home Connect login details. The app will guide you through the registration process. Don't forget to make a note of your e-mail address and password afterwards.



Home Connect login details:

E-mail: _____

Password: _____



Please check availability at www.home-connect.com

Step 2 (Initial start-up): Connecting your oven to your home network (Wi-Fi)

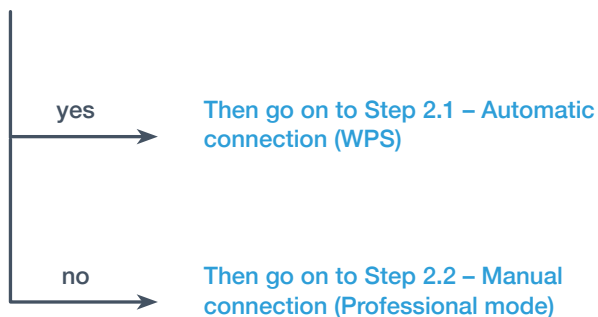


A Install your home appliance and switch it on.



B Check whether your home network router has a WPS function (automatic connection).
Some routers have a WPS button, for example. (You will find information about this in the manual for your router.)

C Does your router have a WPS function (automatic connection)?



Step 2.1: Automatically connecting your oven to your home network (Wi-Fi)



- A Press the **Menu** button on your oven.
- B Press **"Home Connect Assistant"** on your oven.



- C The display now shows **"Network connection Automatic"**



- D Activate the WPS function on your home network router within the next 2 minutes.
(Some routers have a WPS/Wi-Fi button, for example.
You will find information about this in the manual for your router.)



- E After a few seconds, the display of your oven shows **"Network connection Successful"**
Now go on to Step 3.



The following message appears on the display: **"Network login failed."**

The connection could not be established within 2 minutes. Check whether your oven is within range of your home network (Wi-Fi) and repeat the process if necessary, or refer to Step 2.2 to connect the oven manually.

Step 2.2: Manually connecting your oven to your home network (Wi-Fi)



During manual connection, your oven sets up its own Wi-Fi network (access point), which you can log into using your smartphone or tablet.

- A Press the **Menu** button on your oven.
- B Press "**Home Connect Assistant**" on your oven.



- C To start connecting manually, press "**Manually connect**"



- D The display now shows "**Network connection Manual**"
Your oven has now set up its own Wi-Fi network (SSID) "HomeConnect" which you can access using your smartphone or tablet.



Step 2.2: Manually connecting your oven to your home network (Wi-Fi)



- E** To find this, go to the general settings menu on your smartphone or tablet (mobile device) and open up the Wi-Fi settings.
- F** Connect your smartphone or tablet to the **"HomeConnect"** Wi-Fi network (SSID) (the Wi-Fi password [key] is also "HomeConnect"). The connection process may take up to 60 seconds!
- G** Once successfully connected, open the Home Connect app on your smartphone or tablet.
- H** The app will now take a few seconds to search for your oven. Once your oven (home appliance) has been found, you will be prompted—if not already the case—to enter the network name (SSID) and password (key) for your home network (Wi-Fi) into the corresponding fields.
- I** Then follow the instructions in the Home Connect app.



Step 2.2: Manually connecting your oven to your home network (Wi-Fi)



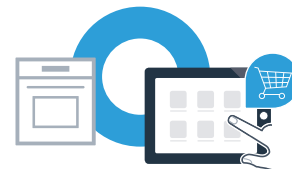
- J The display of your oven now shows **"Network connection Successful."**
Now go on to Step 3.



If a connection could not be established, press the **"Try again"** text field on your oven. Then restart manual network login on your oven from point E.



Step 3: Connecting your oven to your Home Connect app



- A** Press **"Connect with app"** on your oven.



- B** As soon as your oven is shown in the Home Connect app, you have 2 minutes to add it on your smartphone or tablet.



- C** If your oven is not automatically displayed in the app, press **"Connect home appliance"** or **"Search for home appliances."**



- D** Follow the final instructions in the app to confirm the connection and complete the process.

Step 3: Connecting your oven to your Home Connect app



E Once successfully logged in, press **"End assistant"** on your oven.

Tip: If you would like to start the appliance via the app, you will need to activate the remote start beforehand. Press **"Remote start"** on your oven. Now **"Remote start"** appears.



You have successfully connected your oven. You can now benefit from all the advantages of the Home Connect app!

"Connection failed" appears in the display: Ensure that your smartphone or tablet is within your home network (Wi-Fi). Repeat the steps described in Step 3.



Home Connect: Readily heading into a networked future with strong partners.



If you have any questions, just visit us at
www.home-connect.com
or call: 1-800-944-2904

Home Connect is a service of BSH Home Appliances Corporation.

Apple App Store and iOS are Apple Inc. trademarks.
Google Play Store and Android are Google Inc. trademarks.
WiFi is a WiFi Alliance trademark.



en-us (9701) 9001285261