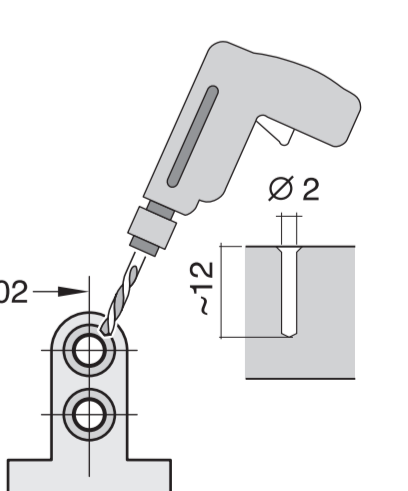
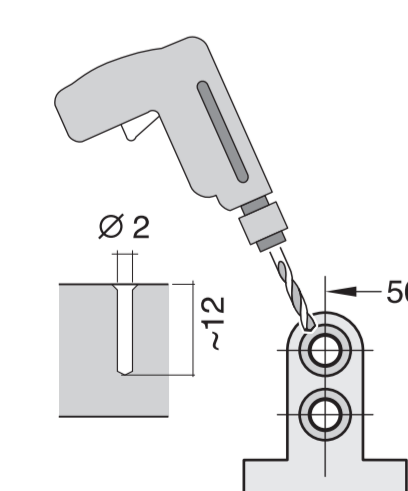
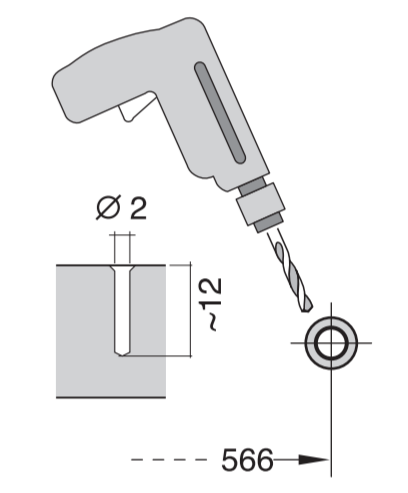
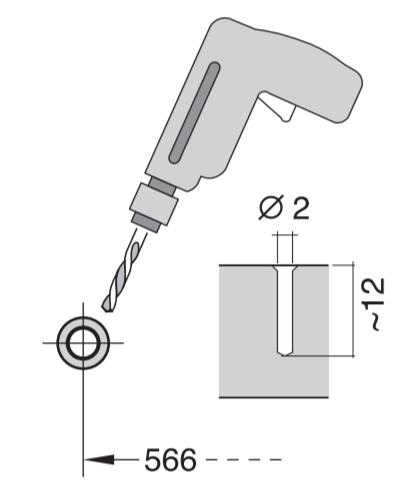
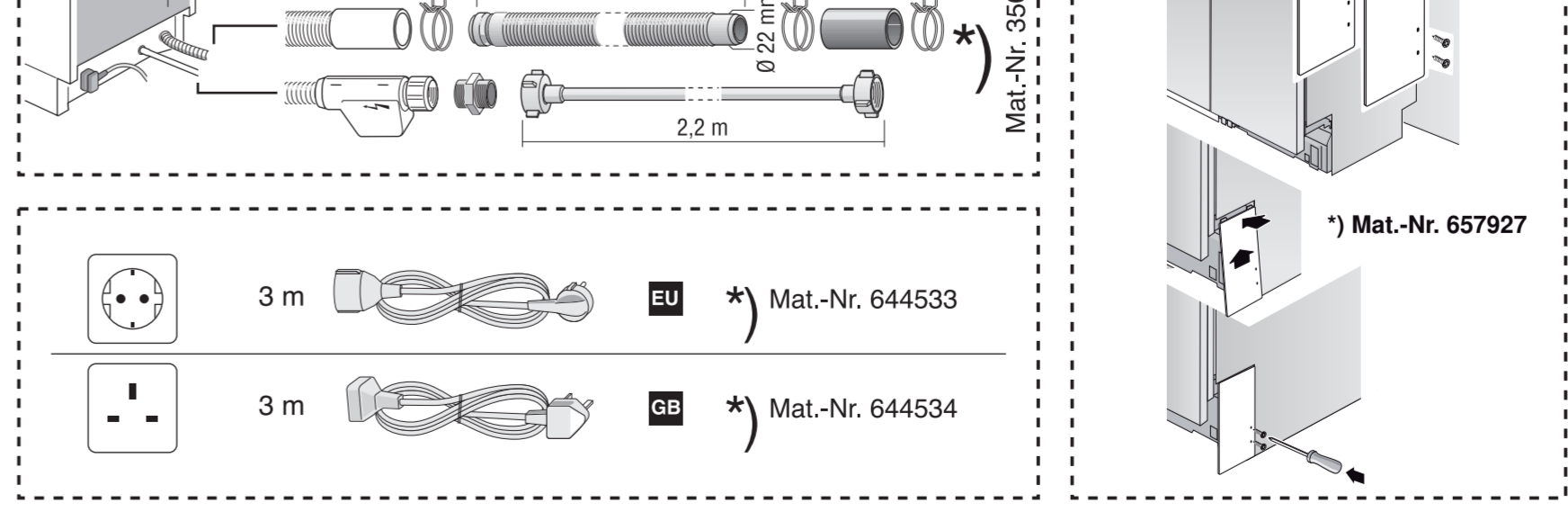
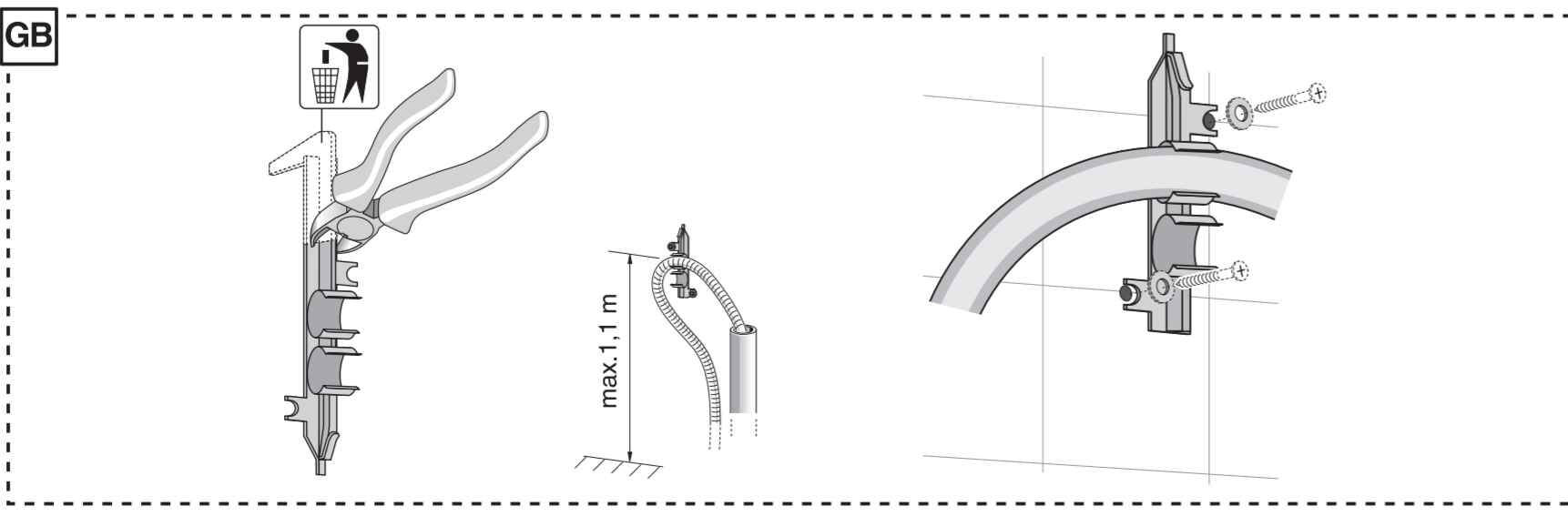
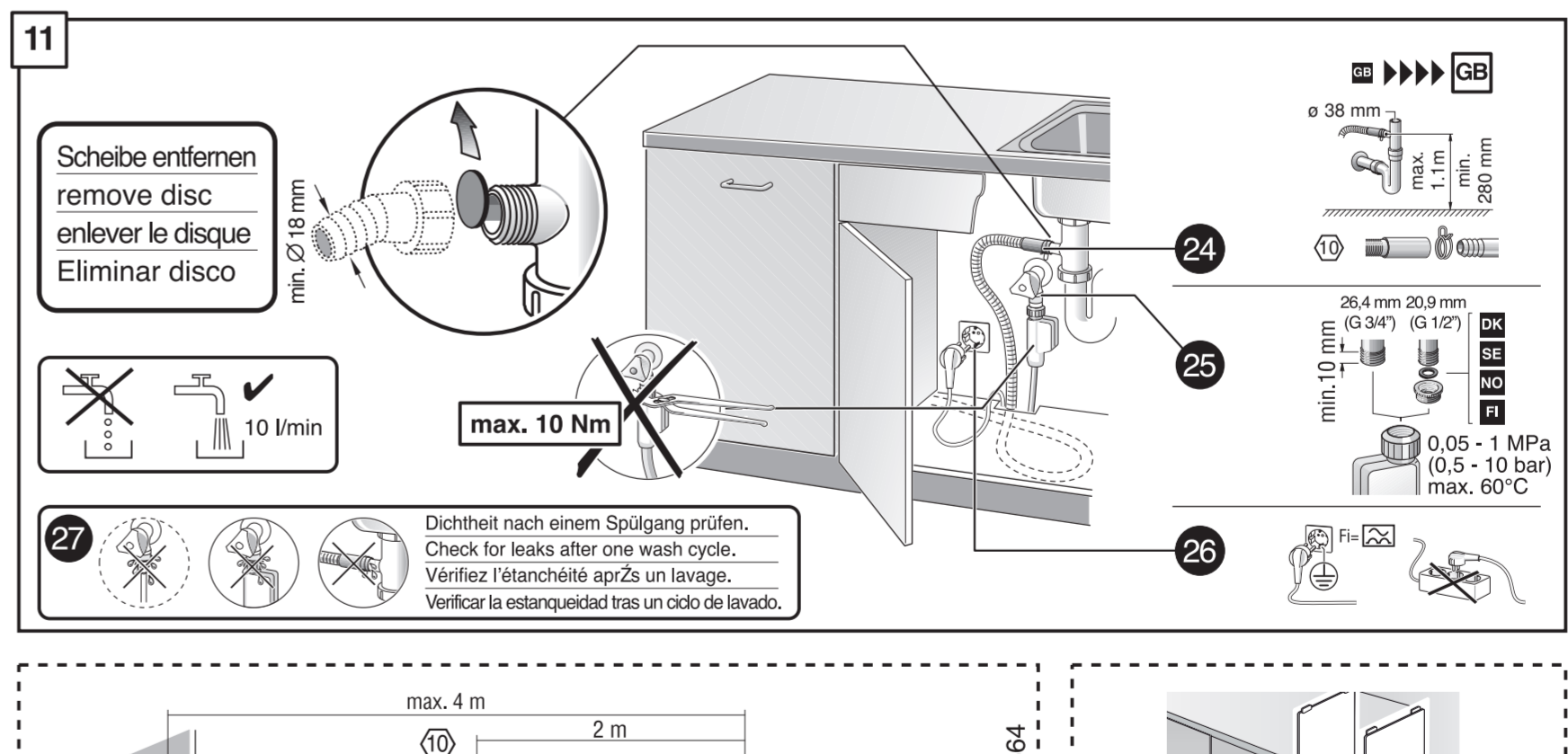
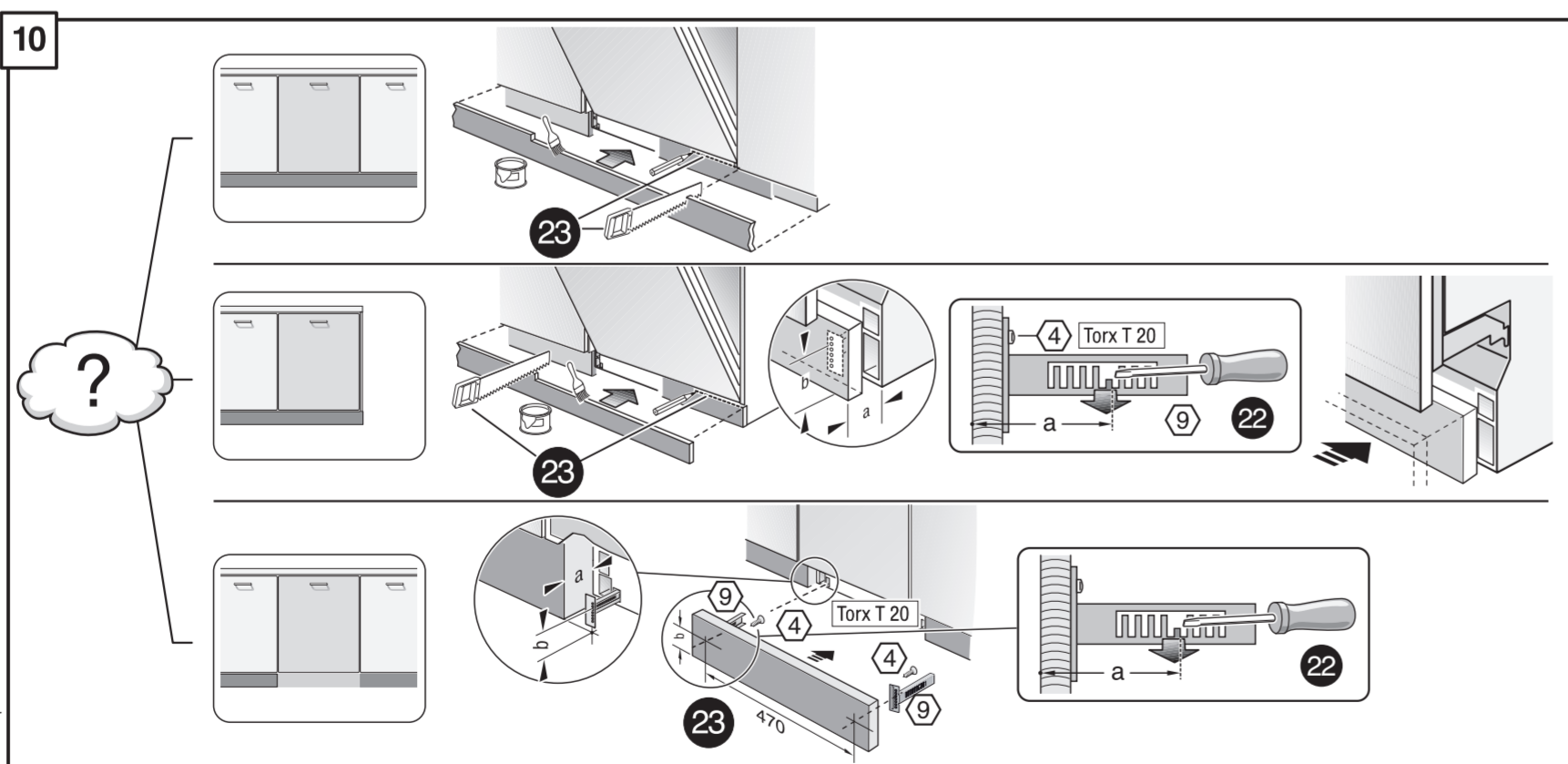
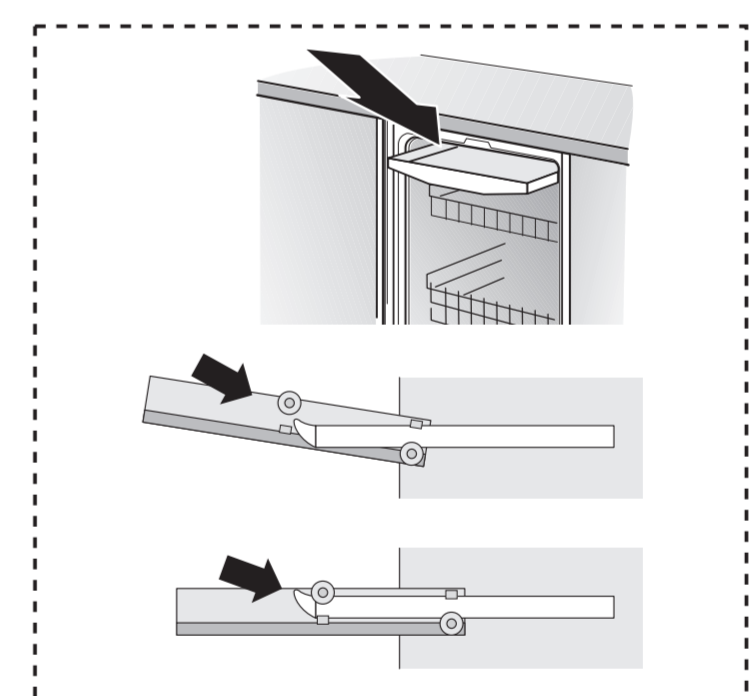
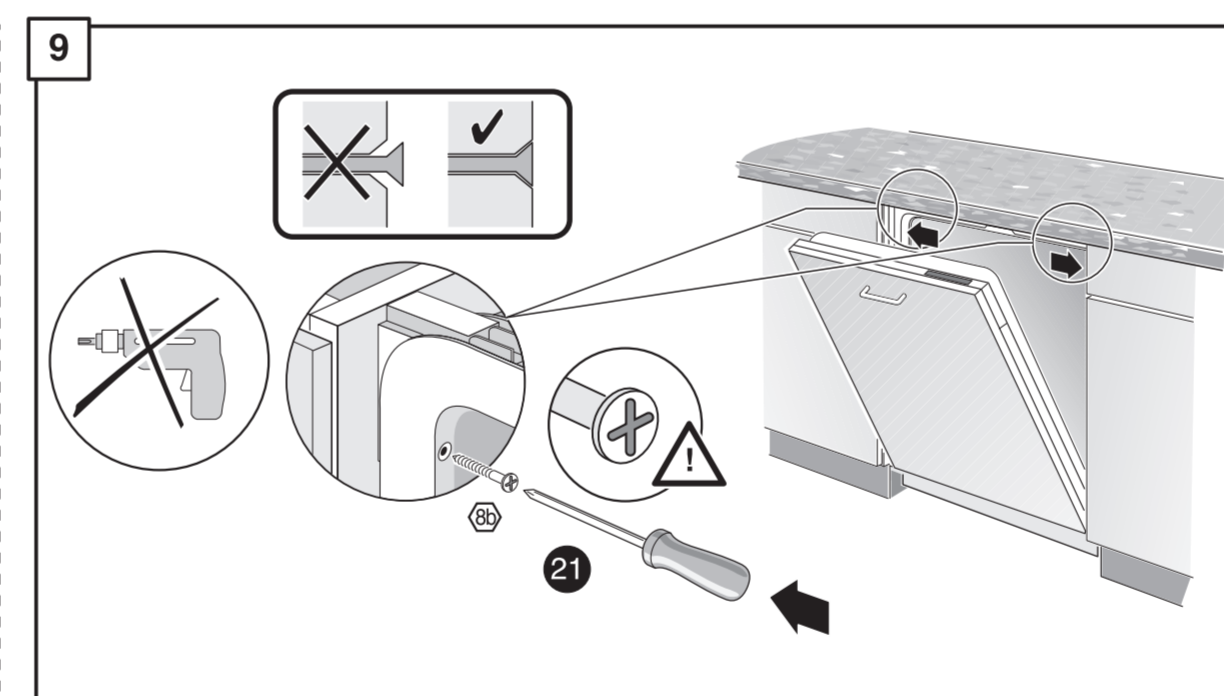
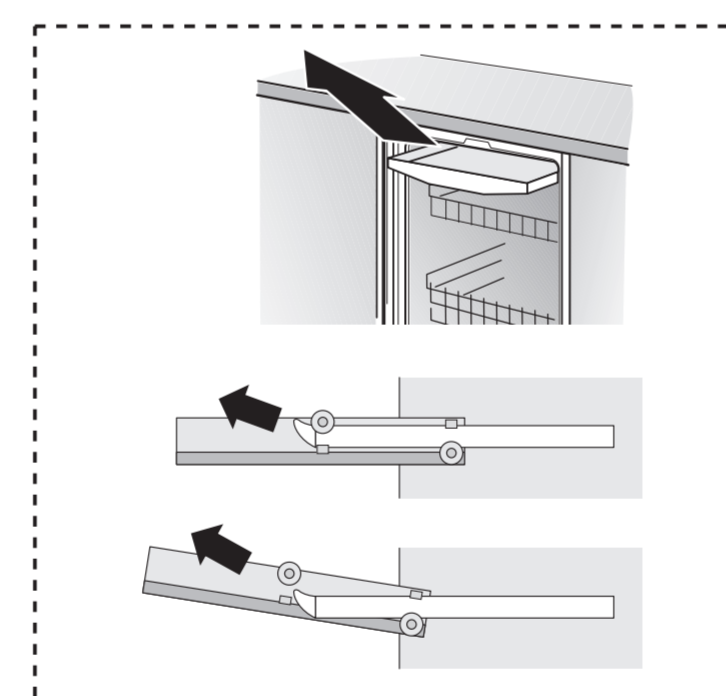
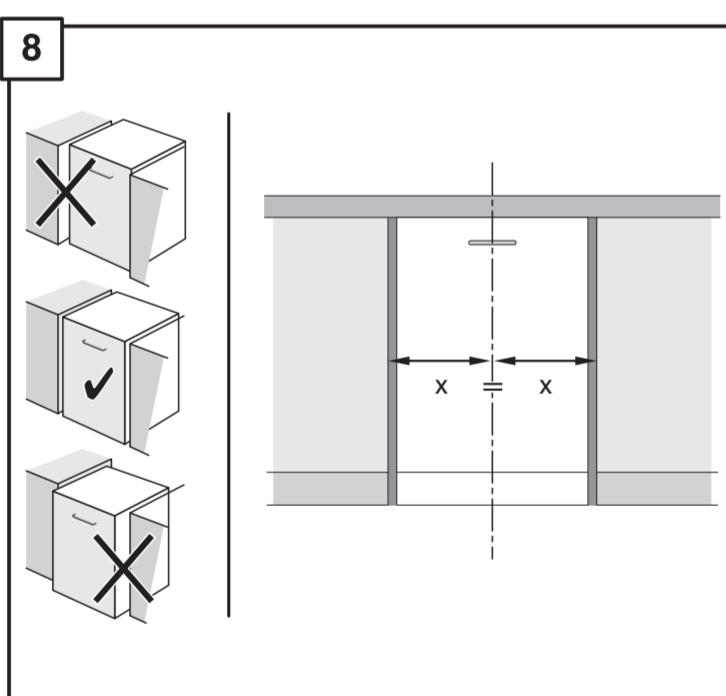
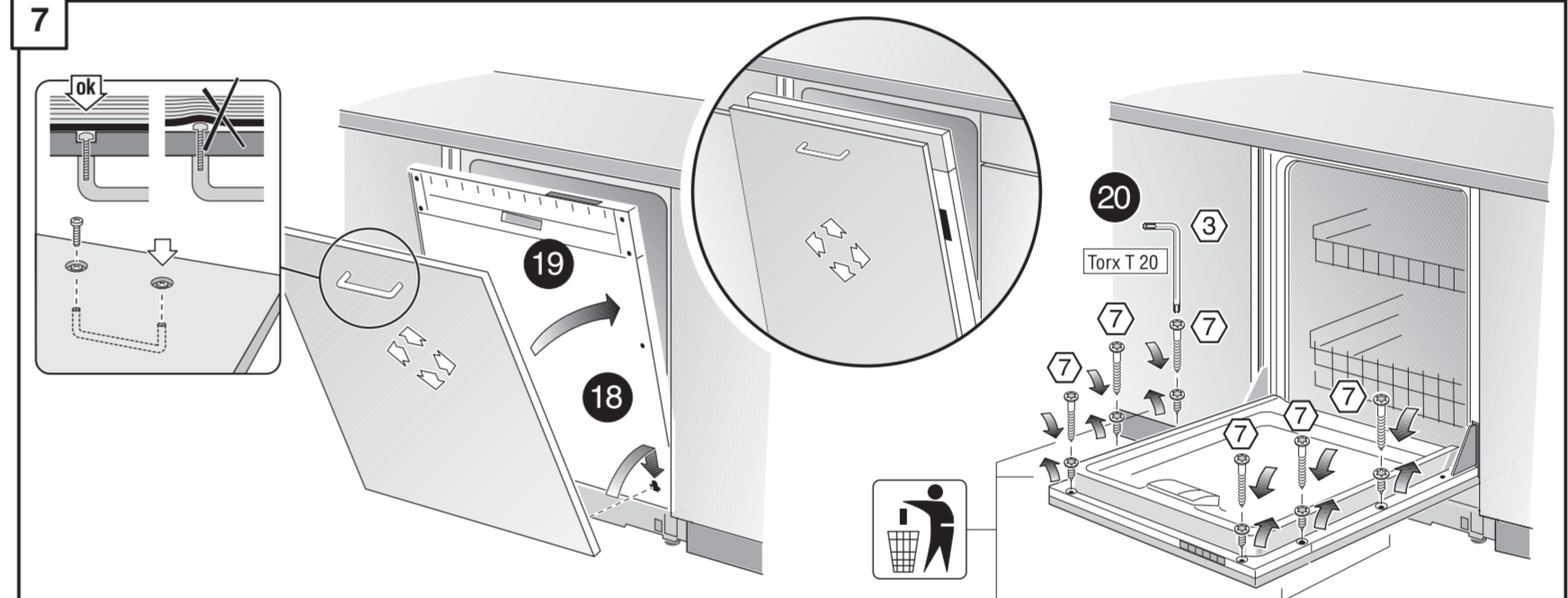
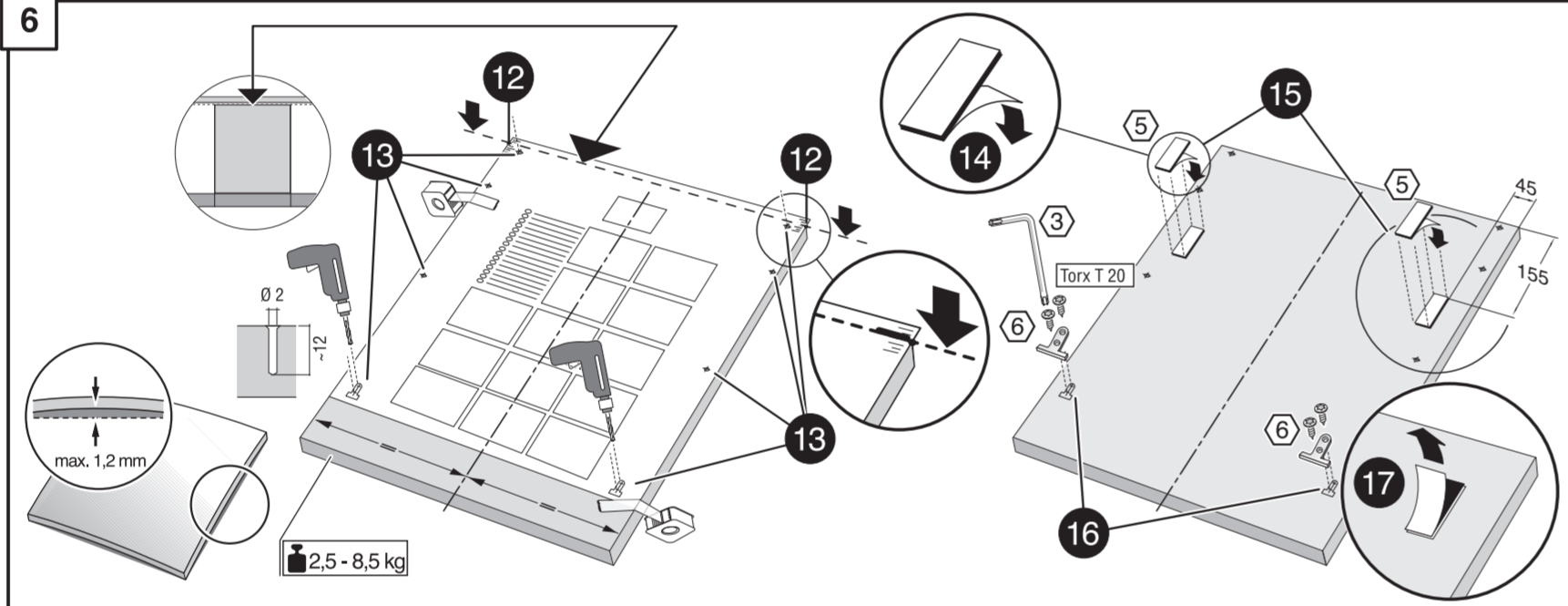
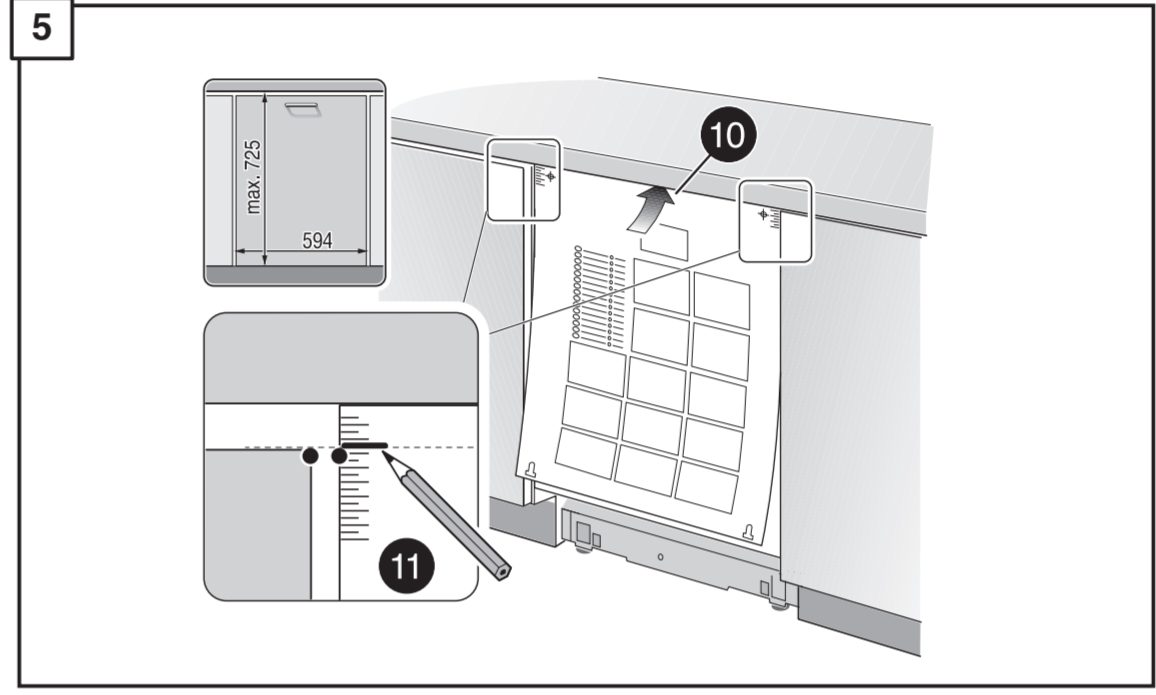
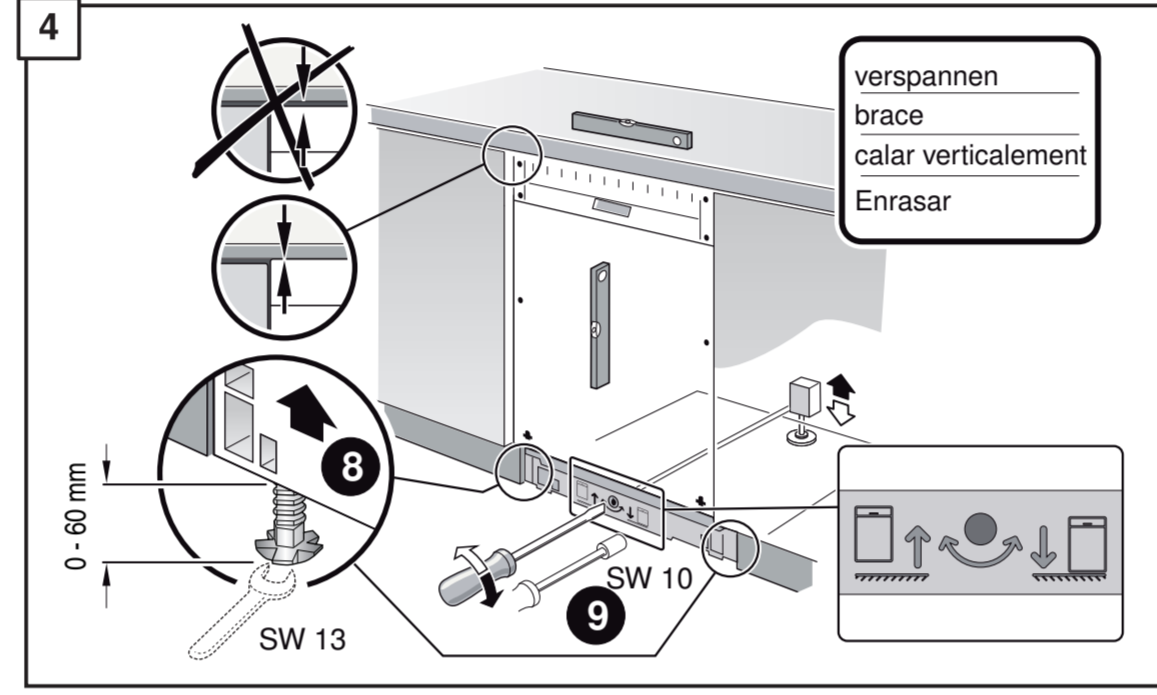
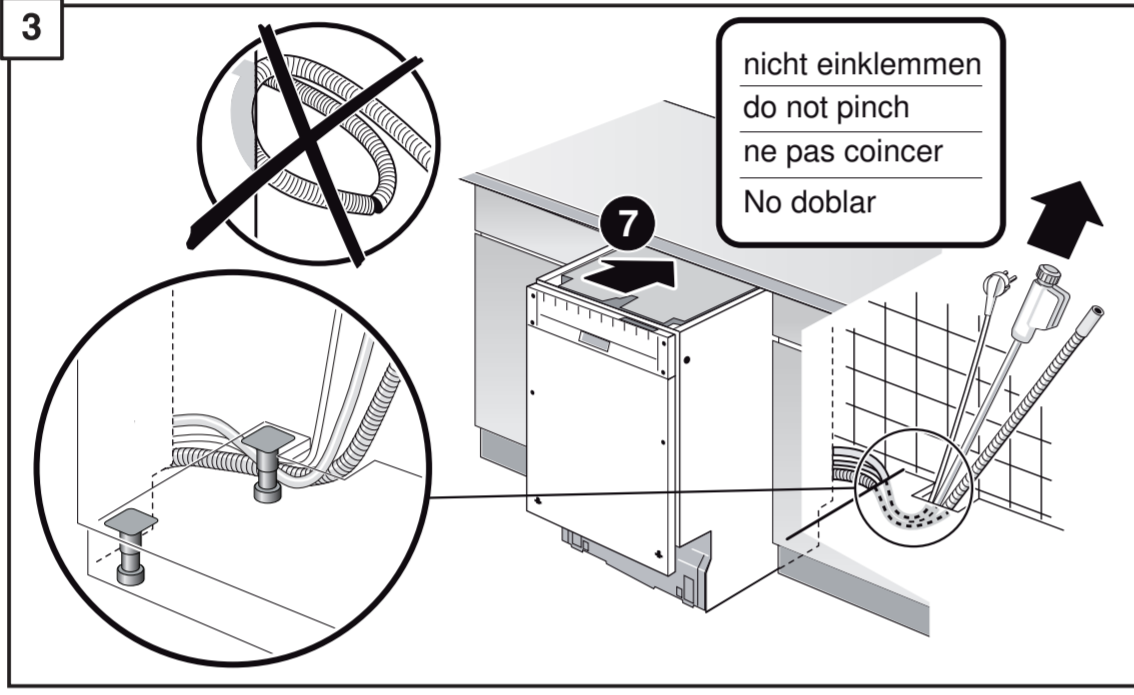
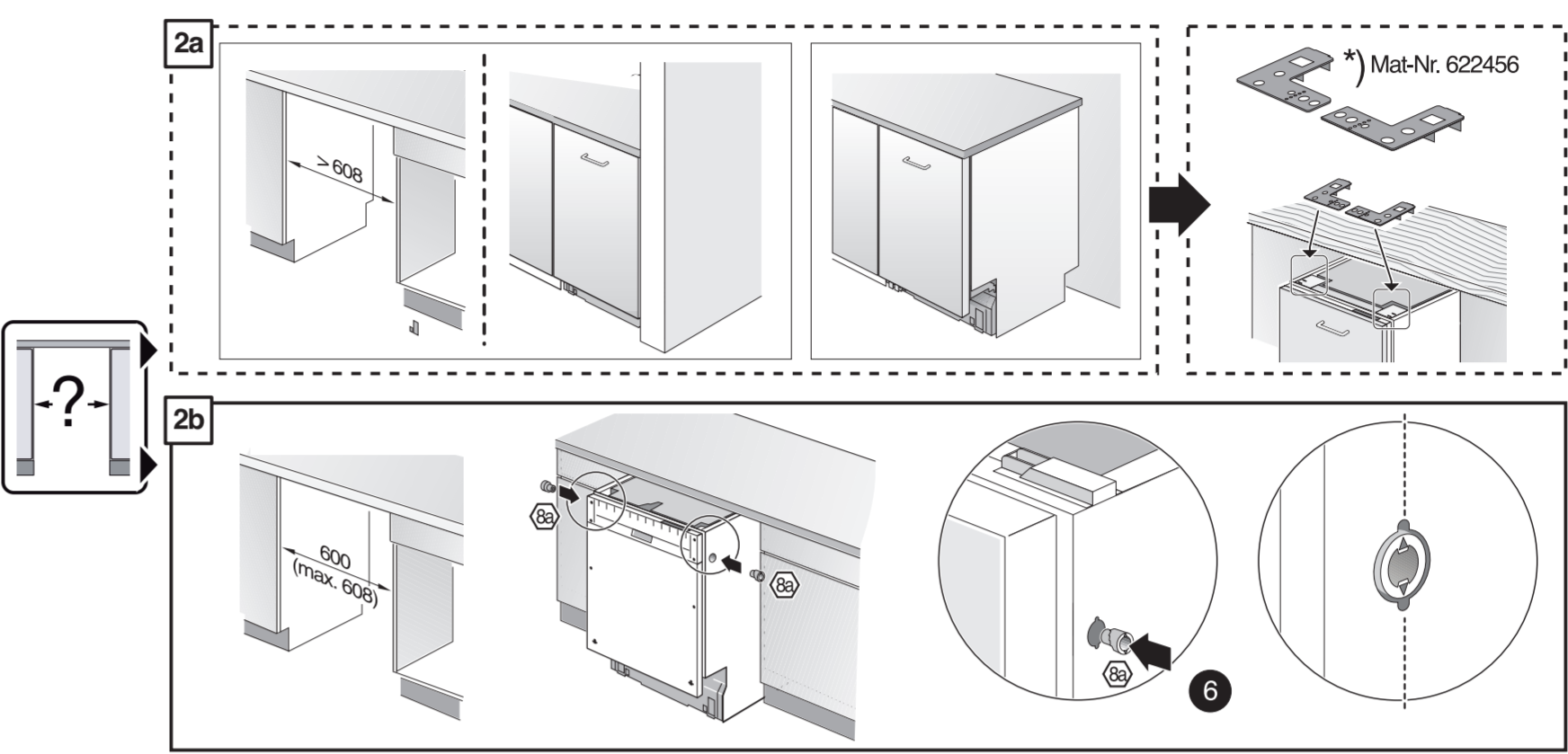
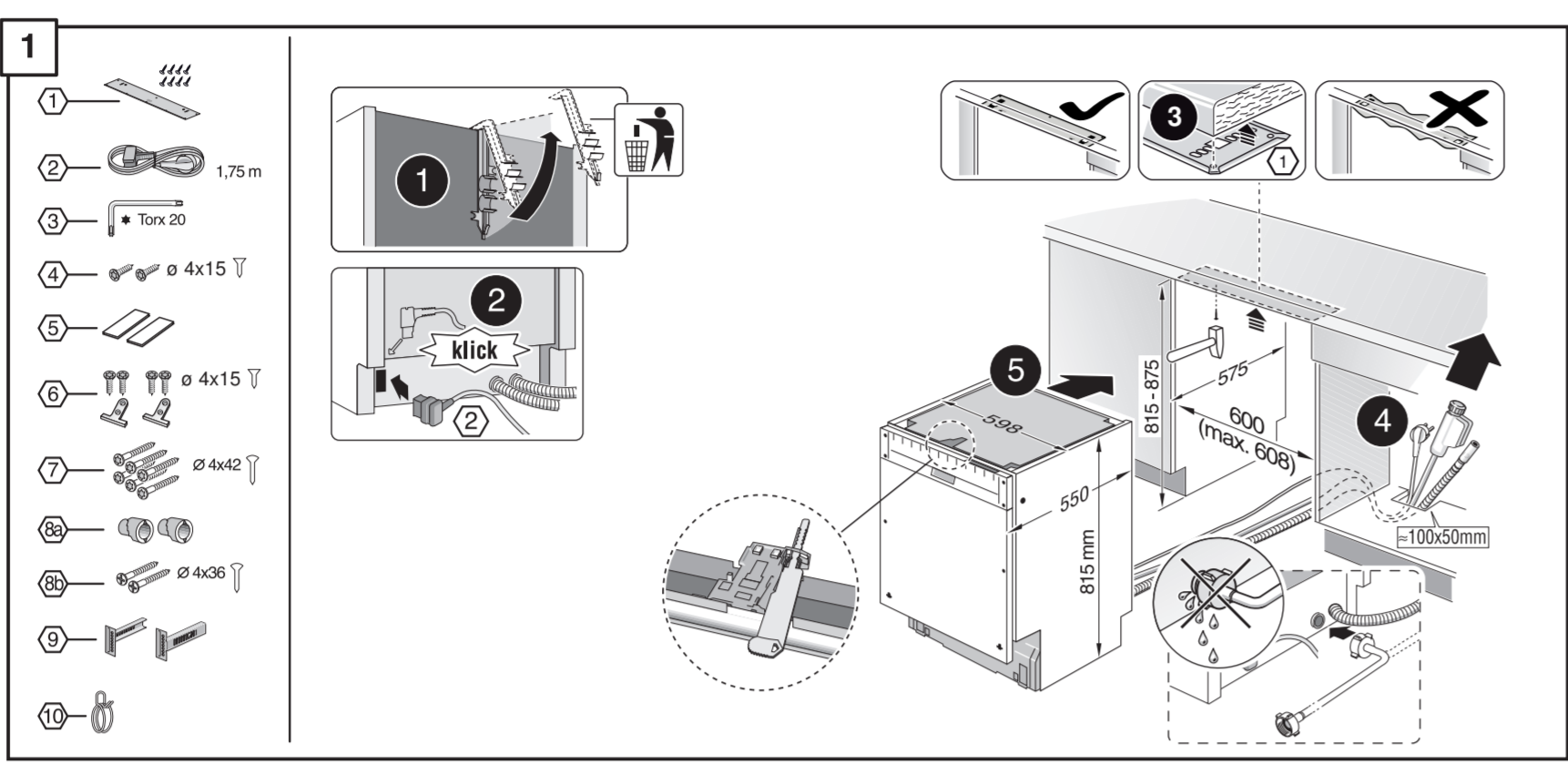




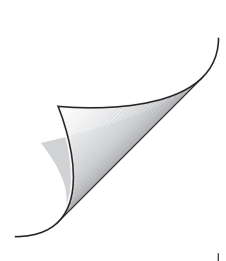
<b>de</b> Montageanleitung *) Über Kundendienst erhältlich	<b>tr</b> Montaj kılavuzu *) Yetkili servis üzerinden alınabilir	<b>mk</b> Упатство за монтажа *) се добива преку службата за купувачи	<b>fa</b> راهنمای مونتاژ *) از مرکز خدمات پس از فروش تهیه فرمایید
<b>ca</b> Installation instructions *) Available from customer service	<b>ru</b> Инструкция по монтажу *) Можно получить в сервисном центре	<b>sl</b> Navodilo za montažo *) lahko nabavite v servisni službi	<b>ar</b> تعليمات التركيب *) يمكن طلبها من مركز خدمة العملاء
<b>fr</b> Notice de montage *) Disponible par le biais du service après-vente	<b>cs</b> Montážní návod *) K dispozici přes servisní službu	<b>sk</b> Uputstvo za montažu *) Može se nabaviti preko servisne službe	<b>ko</b> 설치 설명서 *) 고객센터 센터에서 구입 가능
<b>nl</b> Montagevoorschrift *) Tegen meerprijs bij de Servicedienst verkrijgbaar	<b>et</b> Monteerimisjuhend *) Kõige klienditeeninduselt	<b>zh</b> 安装说明书 *) 可向售后服务站索取	<b>hi</b> इंस्ट्रक्शियां मॉन्टाजू *) ऑनलाइन से सर्विस सेन्टर पर उपलब्ध
<b>it</b> Istruzioni per il montaggio *) Disponibili presso il servizio assistenza clienti	<b>fi</b> Asennusohje *) Saatavissa huoltopalvelusta	<b>lv</b> Montažes instrukcija *) Ja galma gauti klientu aptarnavimo servise	<b>uk</b> Інструкція з монтажу *) Можна отримати через сервісну службу
<b>el</b> Οδηγίες τοποθέτησης *) Διαβείτε από την υπηρεσία τεχνικής εξυπηρέτησης πελατών	<b>da</b> Monteringsvejledning *) Kan købes hos serviceafdelingen	<b>lt</b> Montażas pamudaba *) Var šauneti serviso tarnyboje	<b>ro</b> Instrucțiune de montaj *) Obținabilă la serviciul pentru clienți
<b>es</b> Instrucciones de montaje *) Se puede adquirir a través del Servicio de Asistencia Técnica Oficial de la marca	<b>pl</b> Instrukcja montażu *) Do uzyskania w punkcie serwisowym	<b>sk</b> Návod na montáž *) Dostanete v službe zákazníkom	<b>id</b> Instruksi Pemasangan *) bisa didapatkan melalui Customer Service
<b>pt</b> Instruções de montagem *) Pode ser adquirido nos nossos Serviços Técnicos	<b>hu</b> Szerelési utasítás *) A vevőszolgálaton keresztül kapható:	<b>sq</b> Udhëzues për montim *) Sigurohet nëpërmjet servisit	<b>kk</b> Іске қосу туралы нұсқаулар! *) Сервис қызмет көрсету орталығында алуға жағдай
<b>sv</b> Monteringsanvisning *) Kan fås via Service	<b>hr</b> Uputa za montažu *) može dobiti kod službe održavanja	<b>bs</b> Uputa za montažu *) Može se dobiti preko servisne službe	

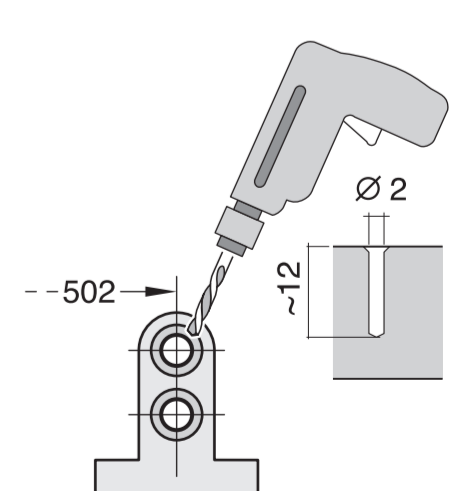
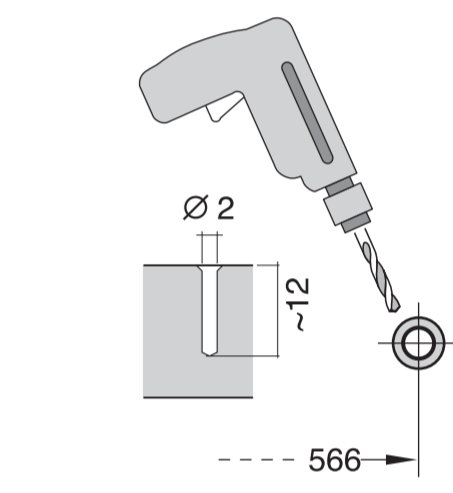
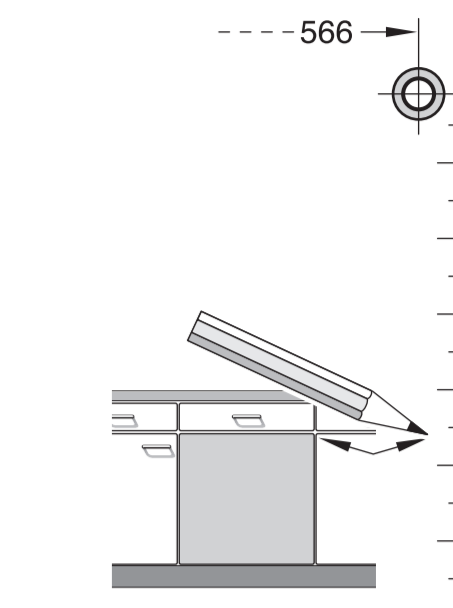
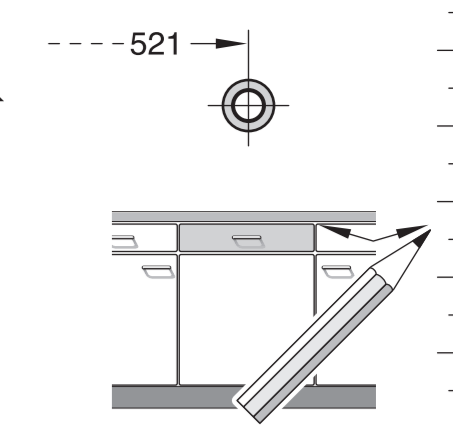
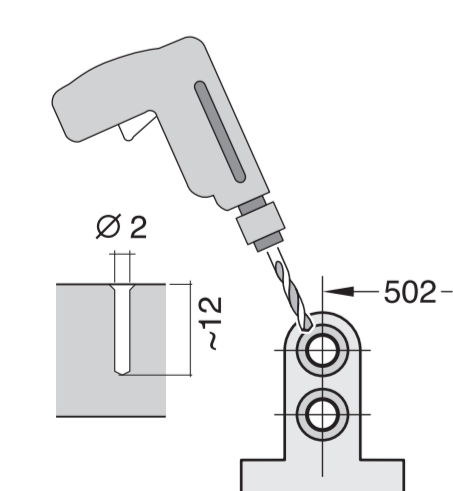
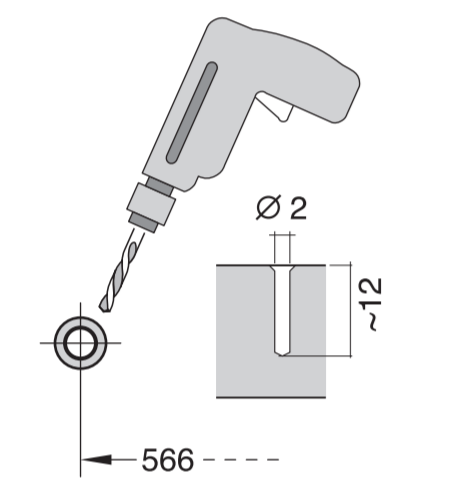
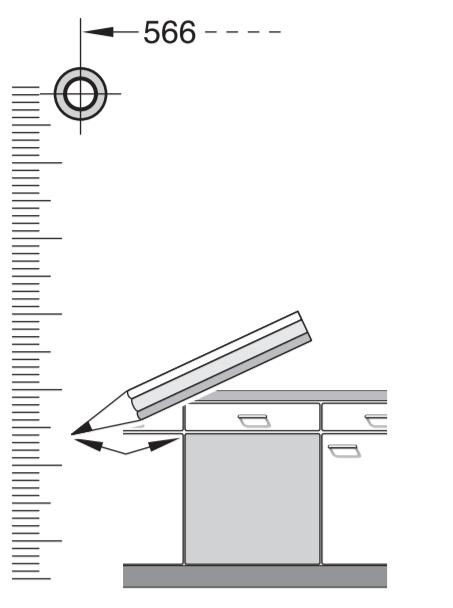
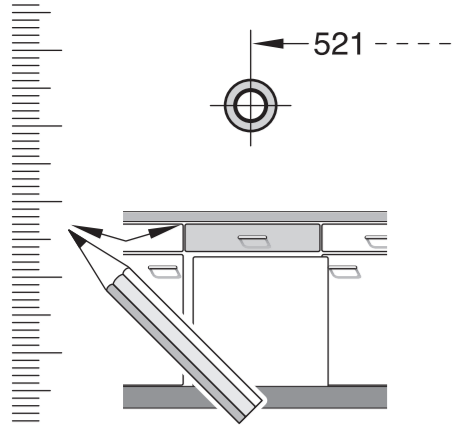
GV 640 IVoll-I - 81,5 cm - Torx 9001 170 211 (9611)



3 m EU \*) Mat.-Nr. 644533  
3 m GB \*) Mat.-Nr. 644534

\*) Mat.-Nr. 657927





**1**

- 1
- 2
- 3
- 4
- 5
- 6
- 7
- 8
- 9
- 10

**2a**

**2b**

**3**

nicht einklemmen  
do not pinch  
ne pas coincier  
No doblar

**4**

verspannen  
brace  
calar verticalment  
Enrasar

**5**

**6**

**7**

**8**

**9**

**10**

**11**

**1**

**4**

**5A**

**6A**

**7A**

**8**

**11**

max. 4 m

2 m

0.22 mm

2.2 m

Mat-Nr. 350564

3 m

3 m

EU \*) Mat-Nr. 644533

GB \*) Mat-Nr. 644534

Mat-Nr. 657927