



de Montageanleitung
*) Über Kundendienst erhältlich
en Installation instructions
*) Available from customer service

fr Notice de montage
*) Disponible par le biais du service après-vente

nl Montagevoorschrift
*) Tegen meerprijs bij de Servicedienst verkrijgbaar

it Istruzioni per il montaggio
*) Disponibile presso il servizio assistenza clienti

es Instrucciones de montaje
*) Se puede adquirir a través del Servicio de Asistencia Técnica Oficial de la marca

pt Instruções de montagem
*) Pode ser adquirido nos nossos Serviços Técnicos

sv Monteringsanvisning
*) kan fås via Service

tr Montaj kılavuzu
*) Yetkilî servis üzerinden alınabilir

ru Инструкция по монтажу
*) Можно получить в сервисном центре

cs Montážní návod
*) K dispozici přes servisní službu

no Monteringsanvisning
*) fåes hos kundeservice

fi Asennusohje
*) Saatavissa huoltopalvelusta

pl Instrukcja montażu
*) Kan kabes hos serviceafdelingen

uk Інструкція монтажу
*) До uzyskania в пункті сервісовому

hu Szerelési utasítás
*) A vevőszolgáltatón keresztül kapható:

lv Uputa za montažu
*) može dobiti kod službe održavanja

mk Упатство за монтажа
*) се добива преку службата за купувачи

sl Navodilo za montažo
*) Lahko nabavite v servisni službi

sq Uputstvo za montazh
*) Može se nabaviti preko servisne službe

et Monteerimisjuhend
*) Küsige klientiteeninduseit

lt Montavimo instrukcija
*) Ji galima gauti klientų aptarnavimo servise

lv Montažas pamācība
*) Var saņemt servisa dienestā

sk Návod na montáž
*) Dostanete v službe zákazníkom

sl Udhæuzes pèr monit
*) Sigurohet nàpèrmijet servisit

bs Uputa za montažu
*) Može se dobiti preko servisne službe

fa راهنمای مونتاژ
*) از مرکز خدمات پس از فروش تهیه فرمایید

ar تعليمات التركيب
*) يمكن الحصول عليها من مراكز خدمة العملاء

ko 설치 설명서
*) 고객센터 센터에서 구입 가능

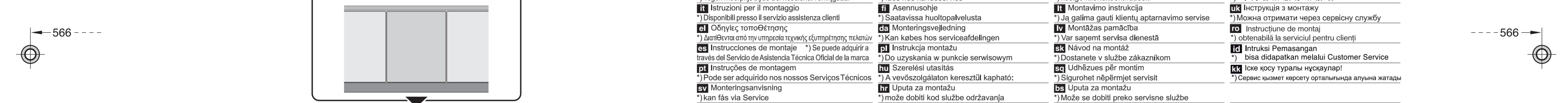
zh 安装说明书
*) 可向售后服务站索取

ukr Інструкція з монтажу
*) Можна отримати через сервісний сервіс

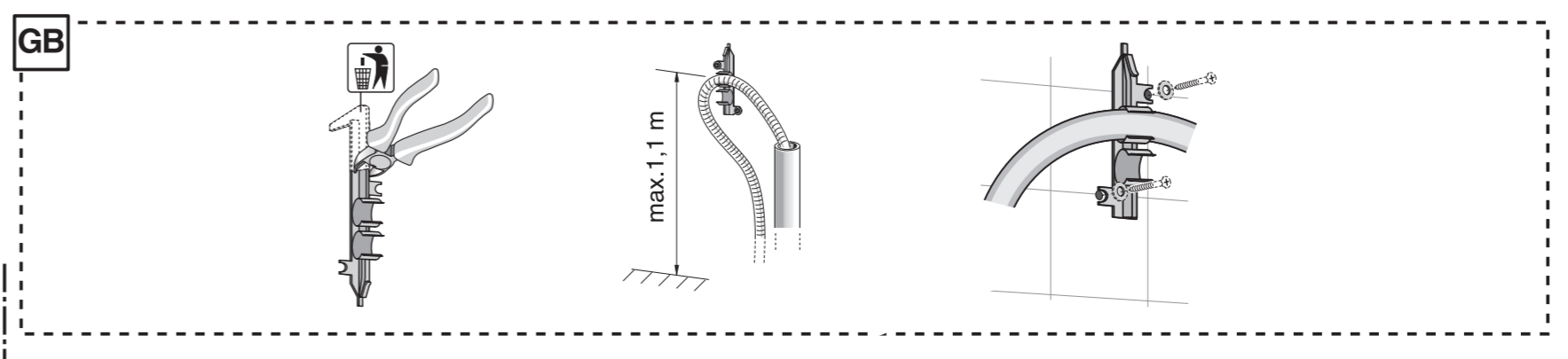
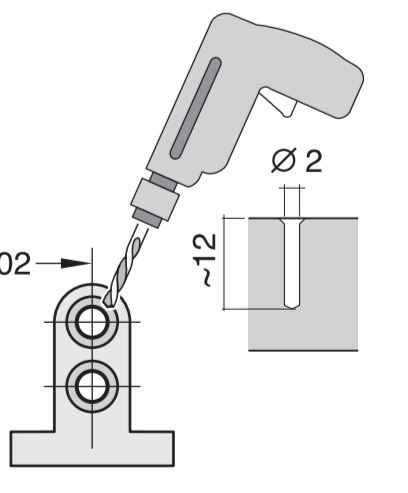
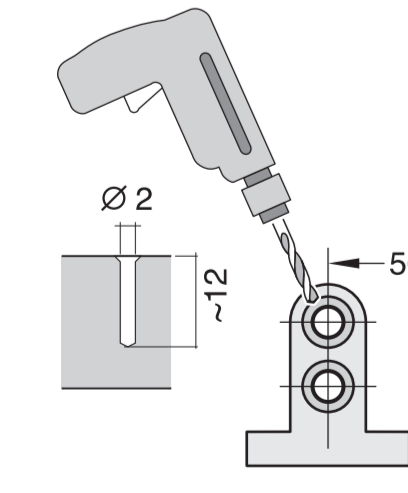
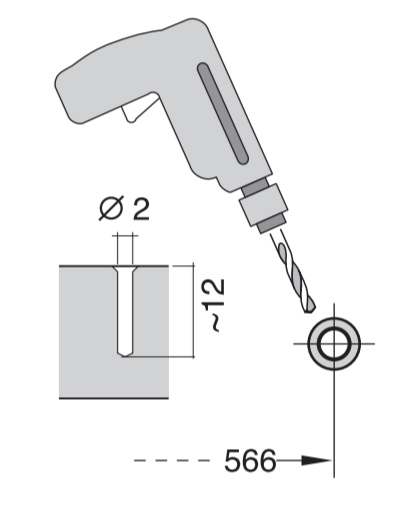
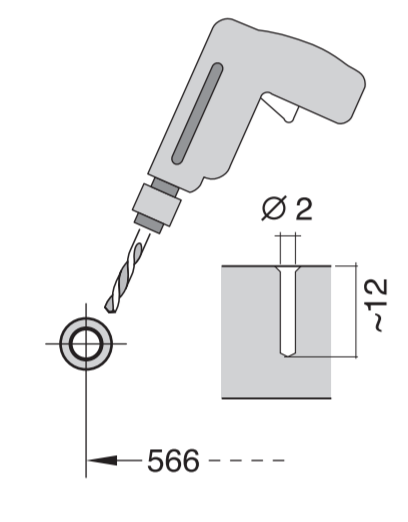
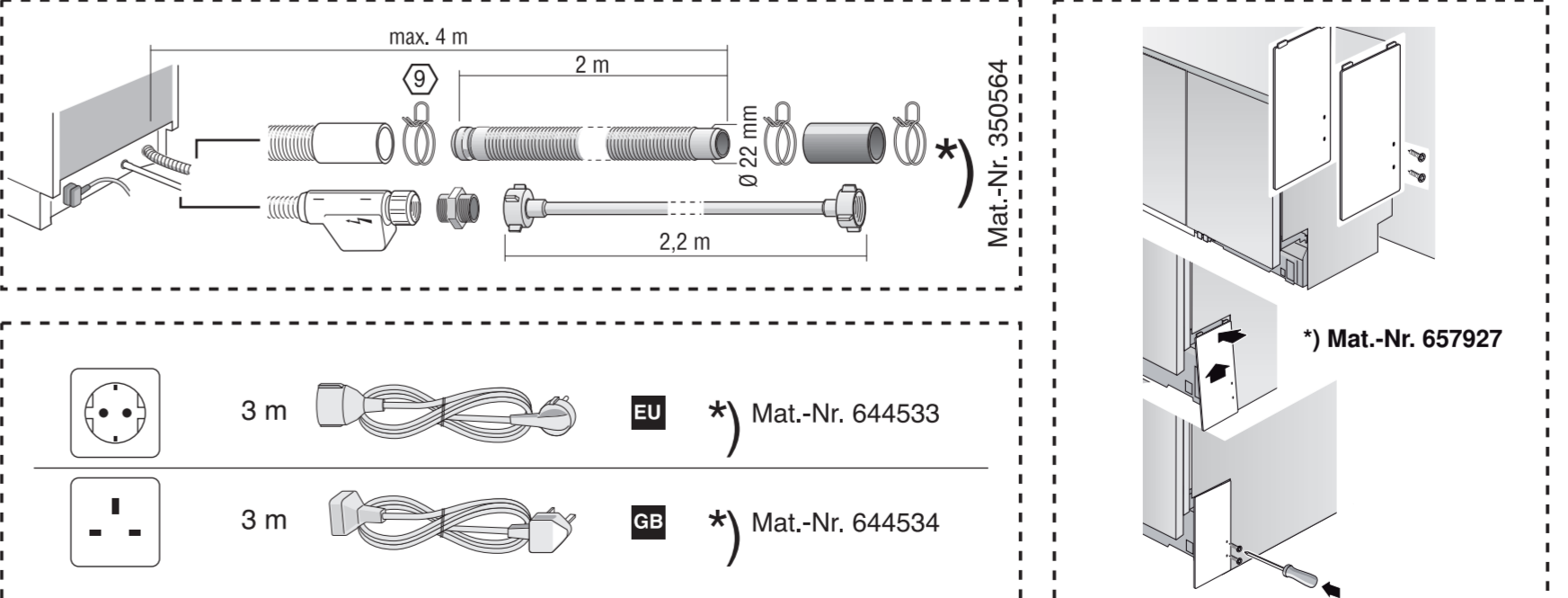
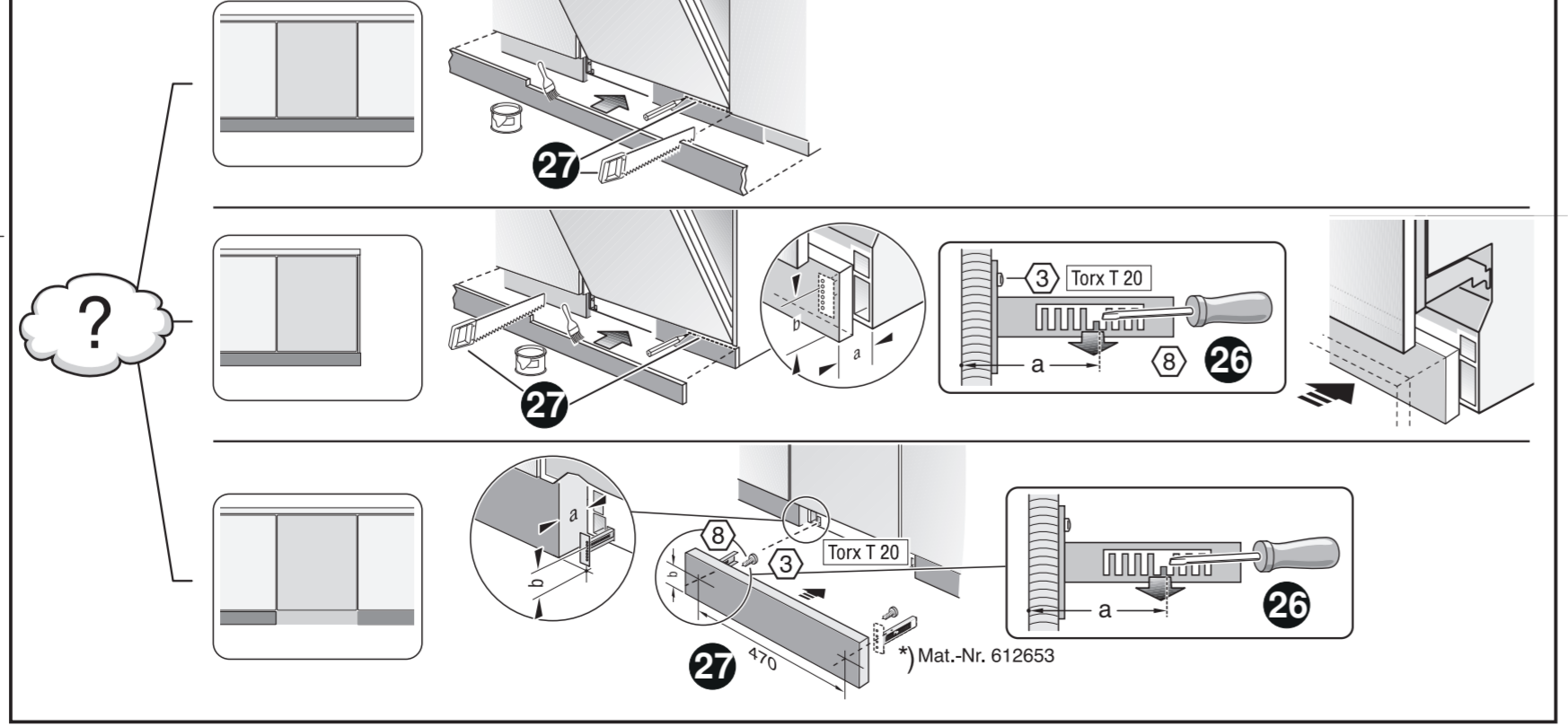
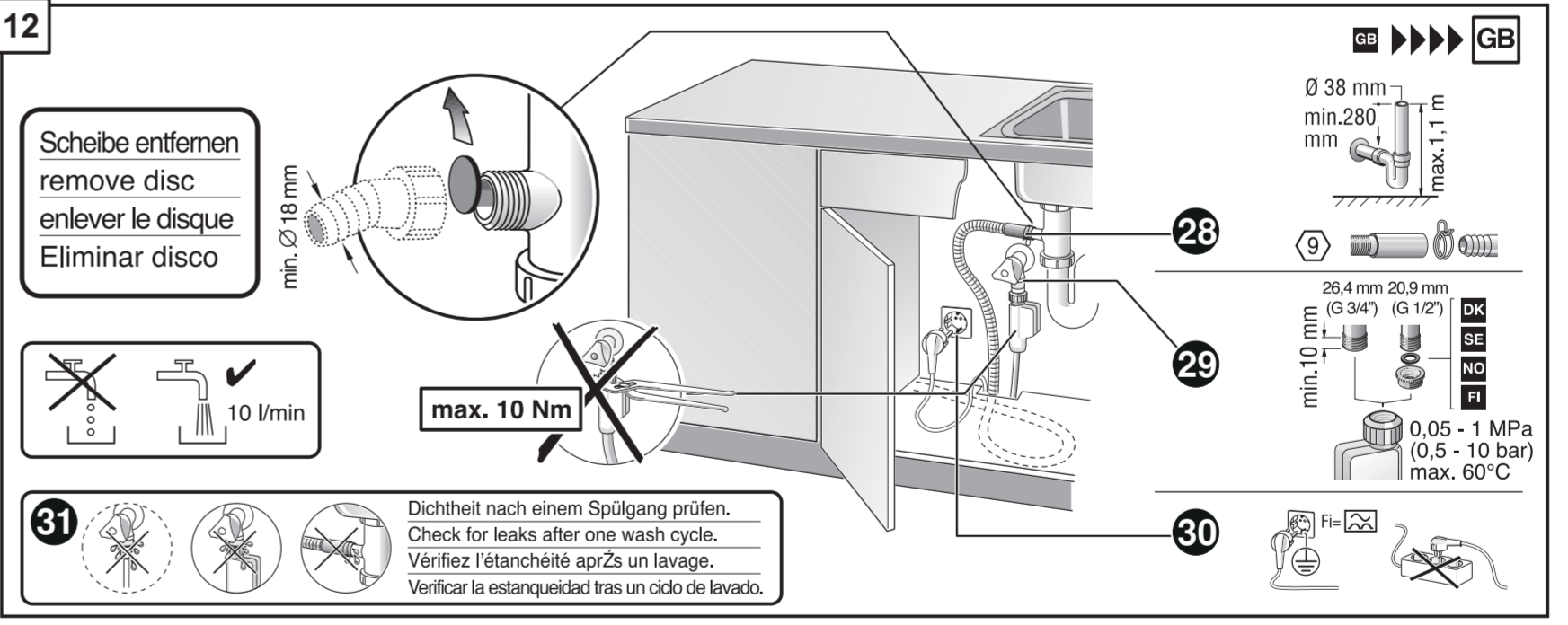
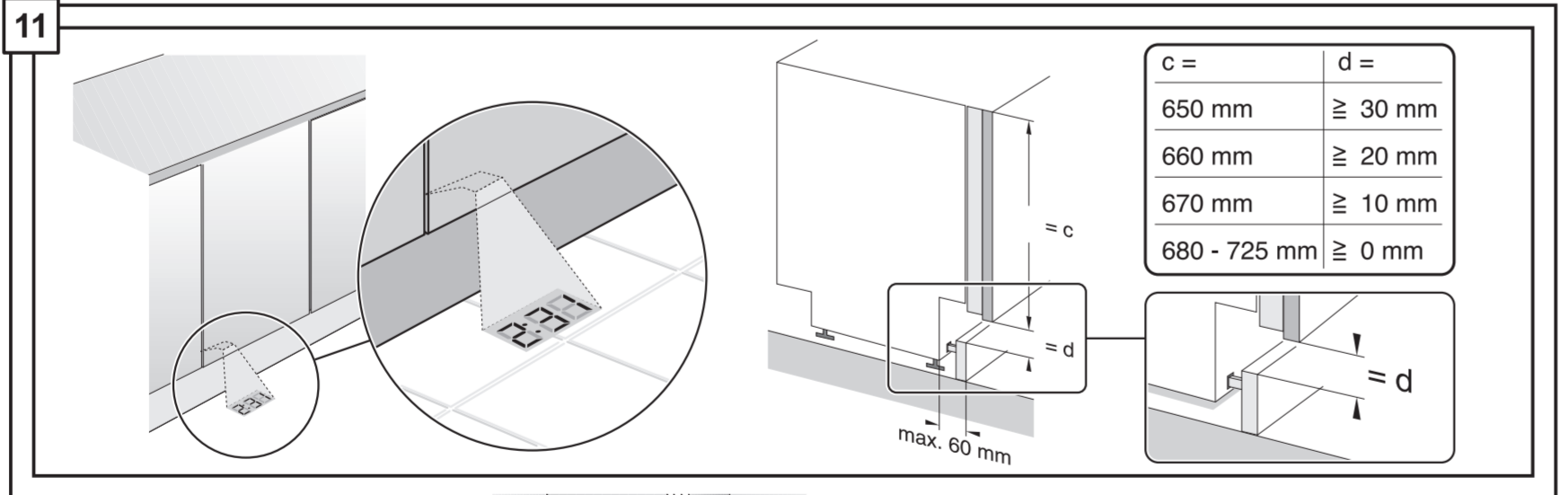
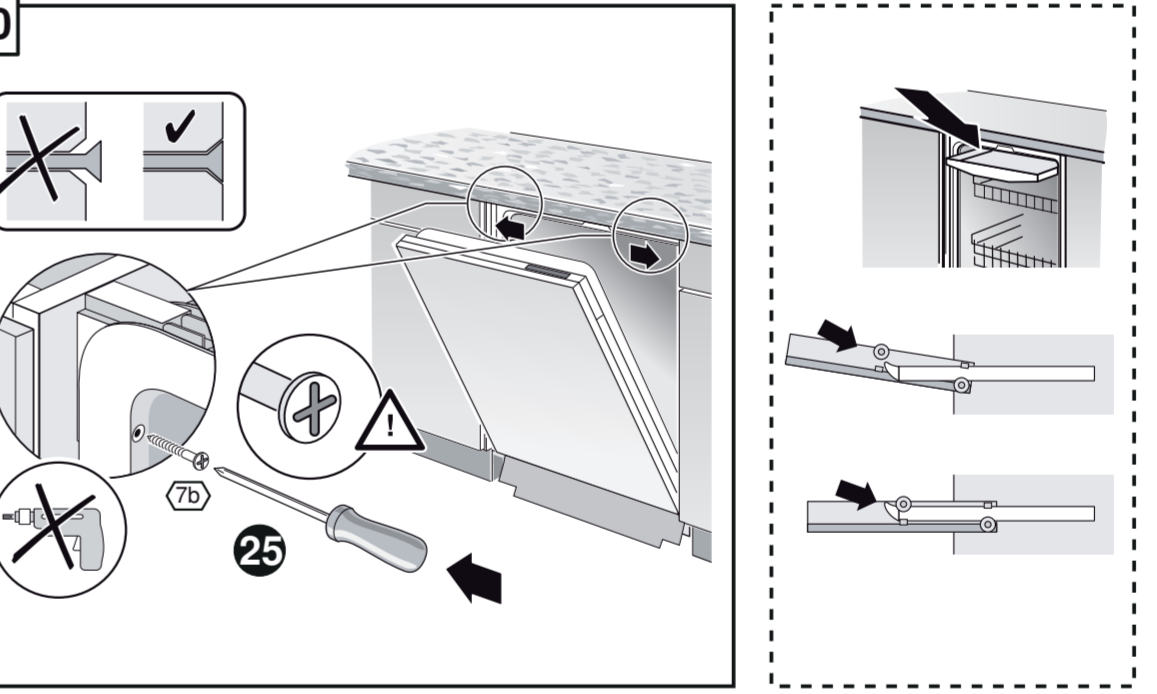
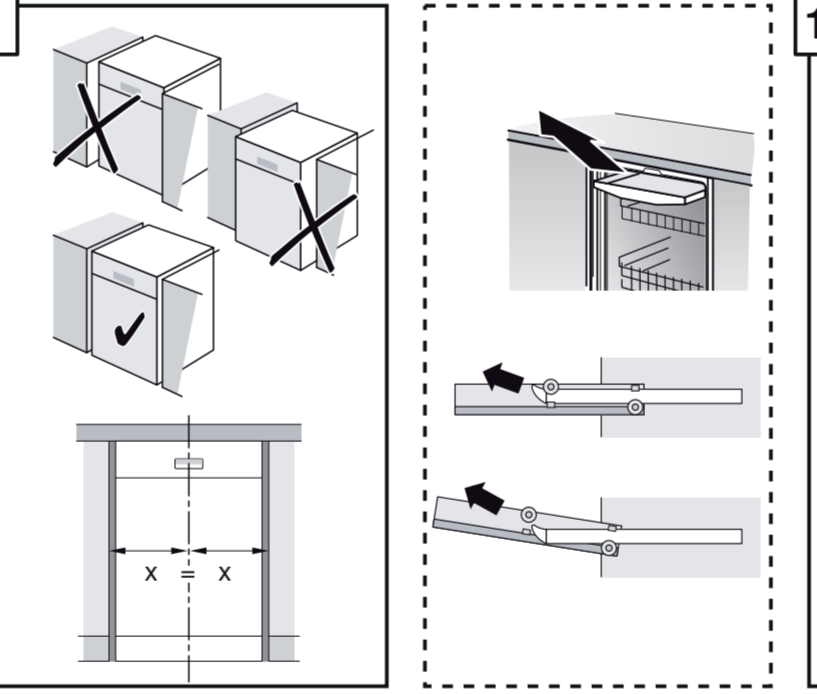
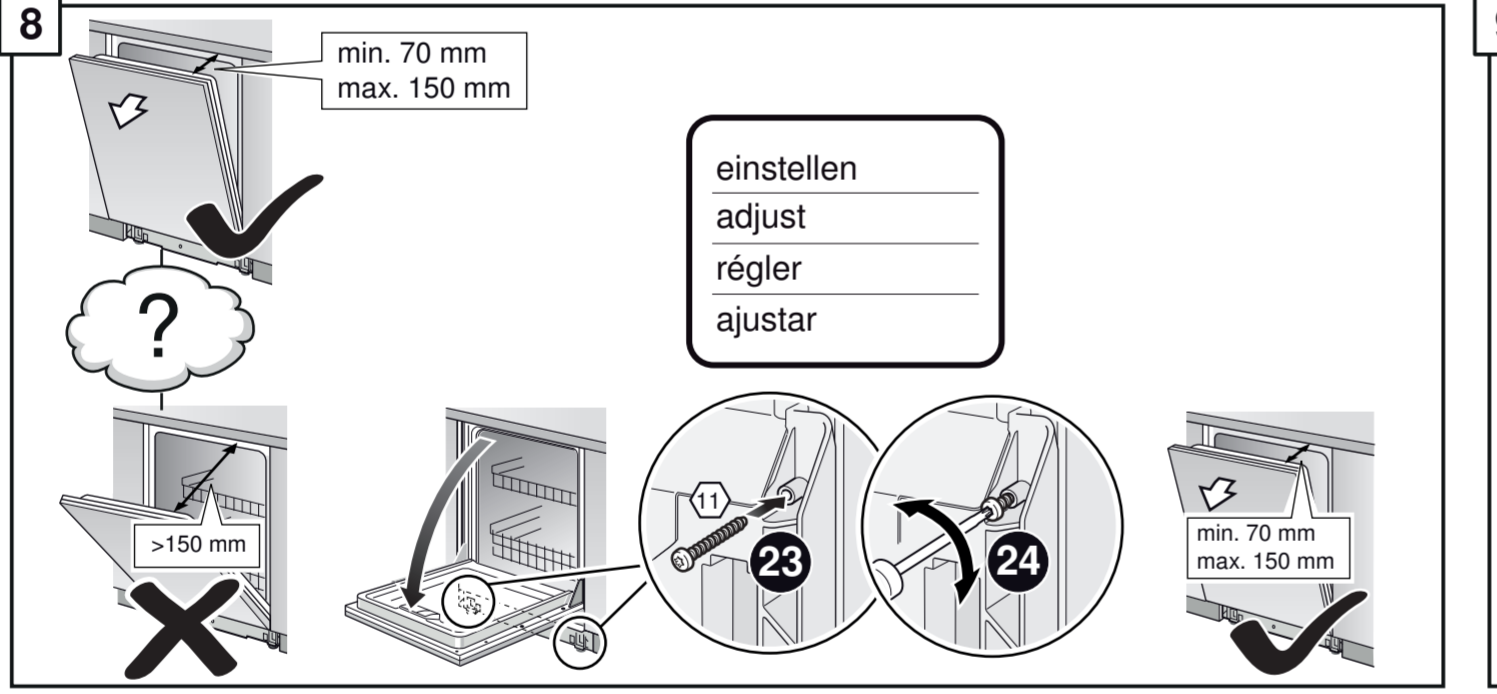
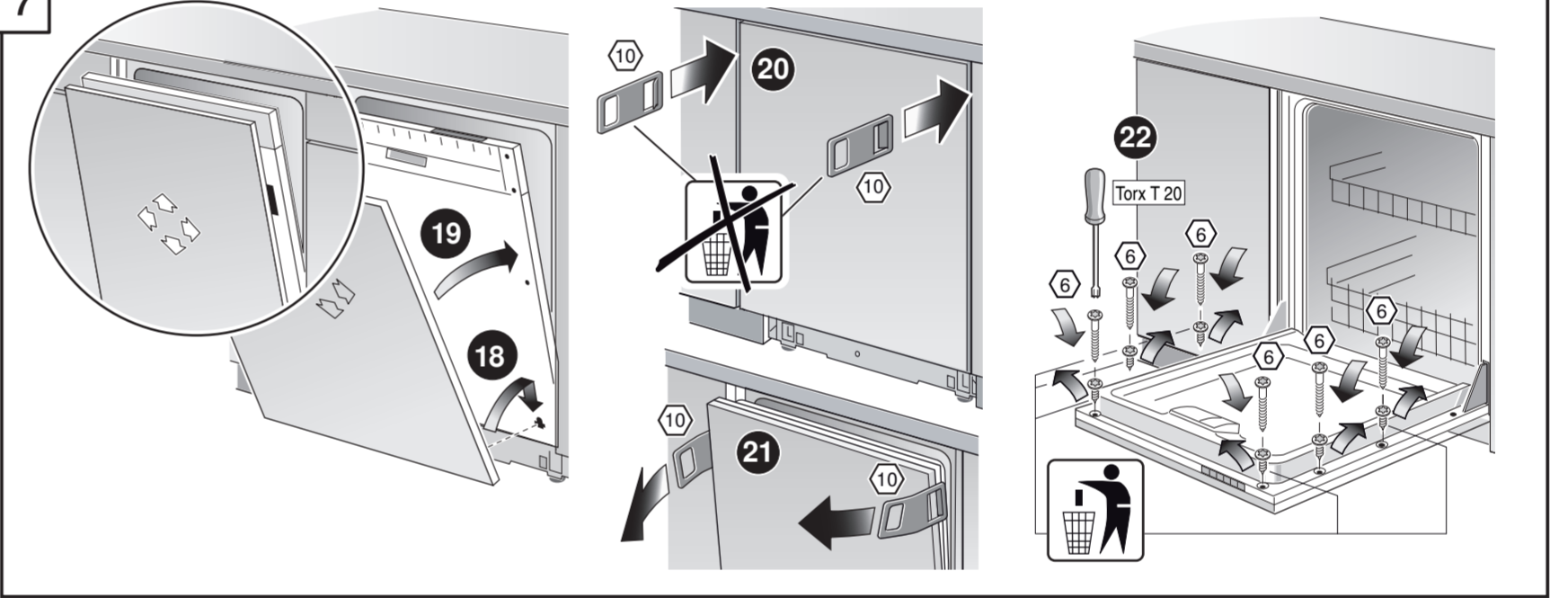
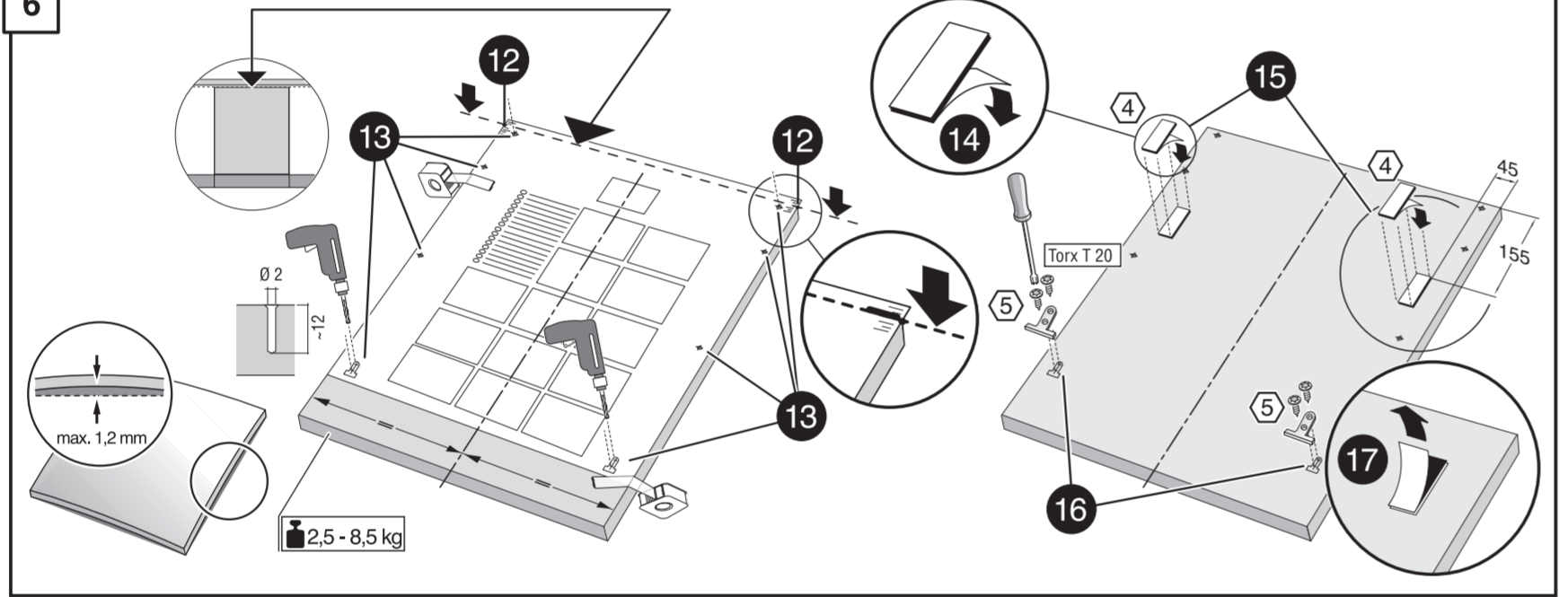
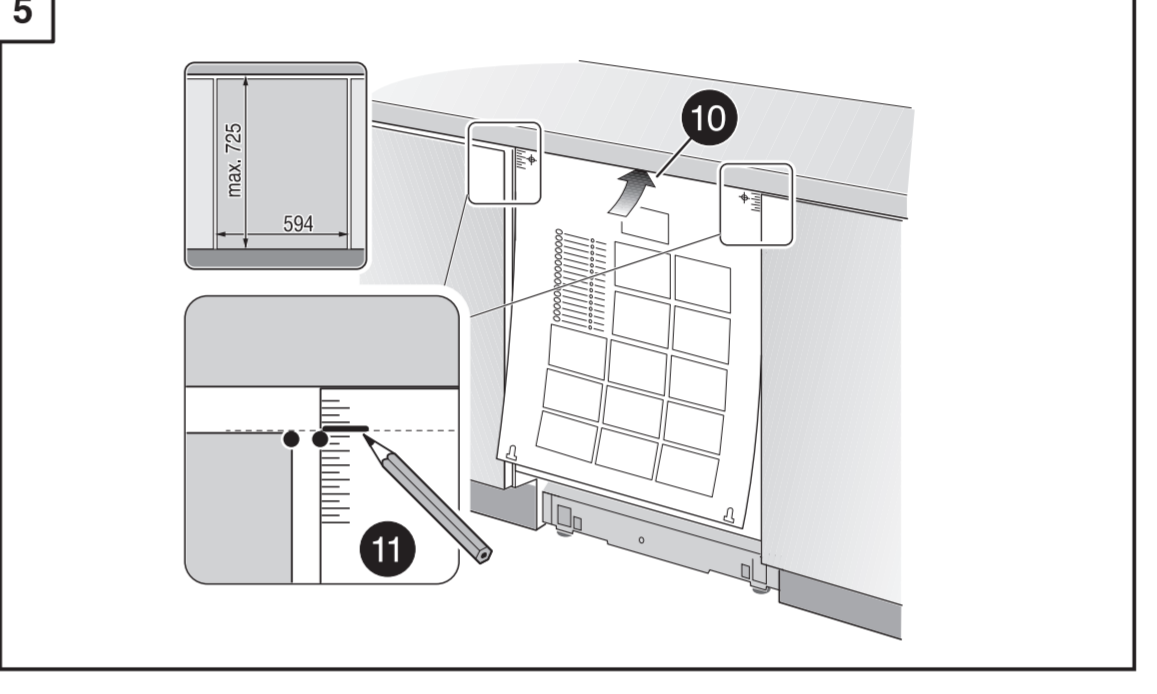
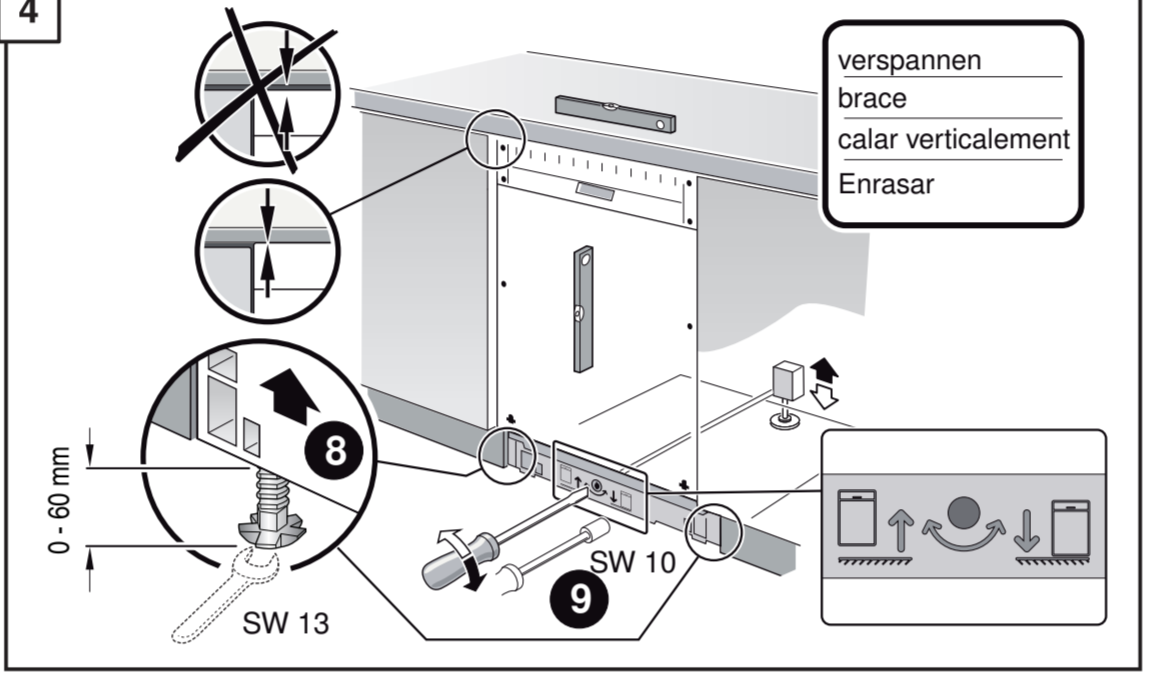
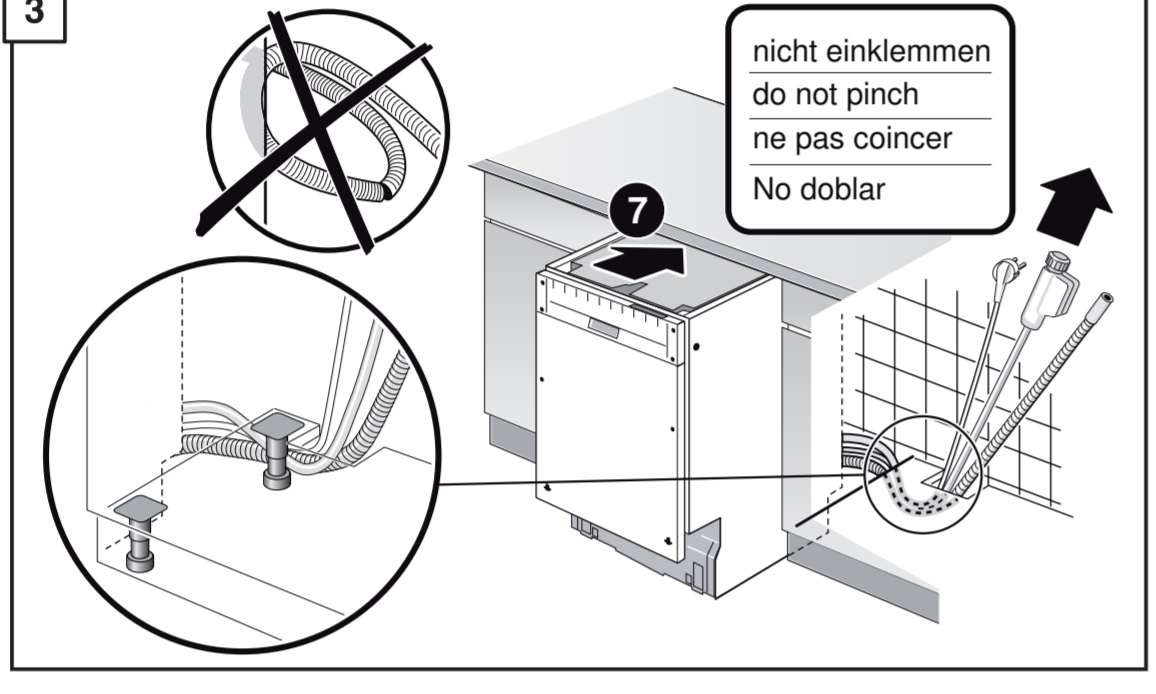
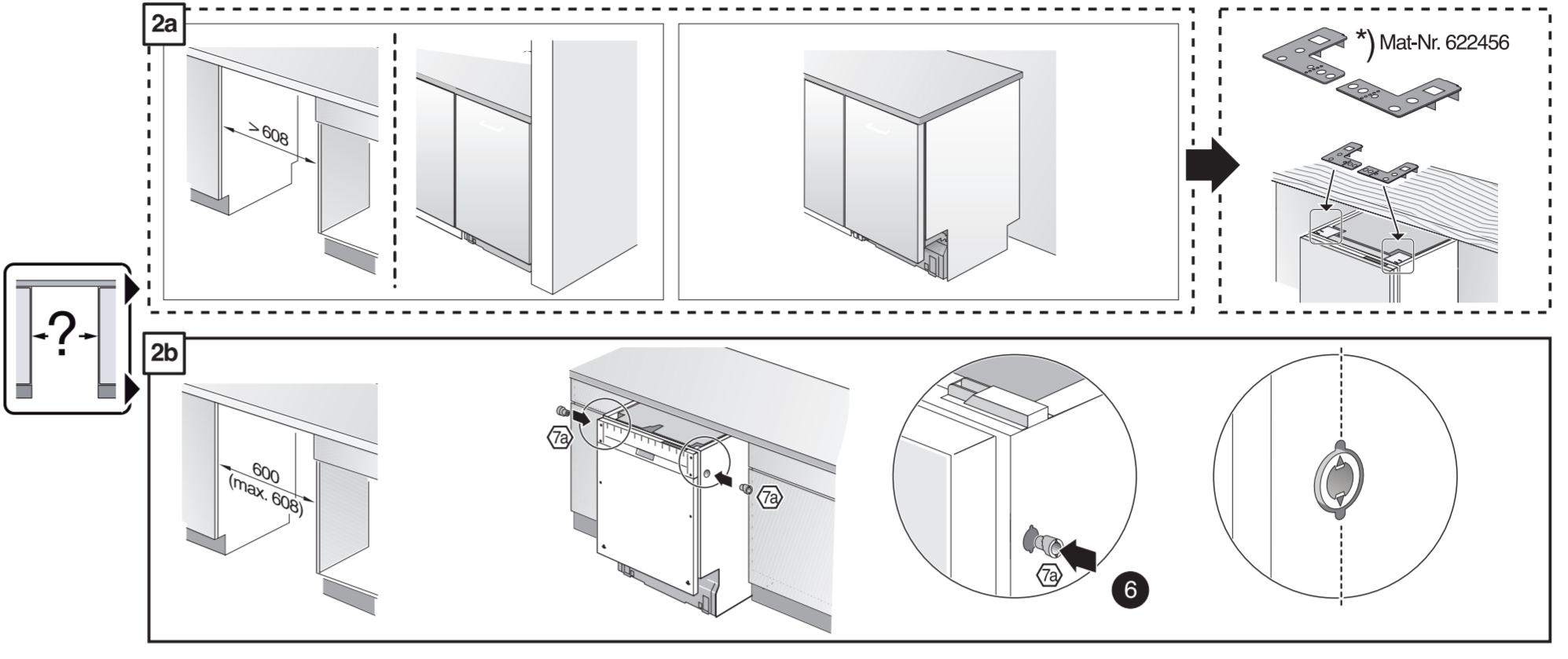
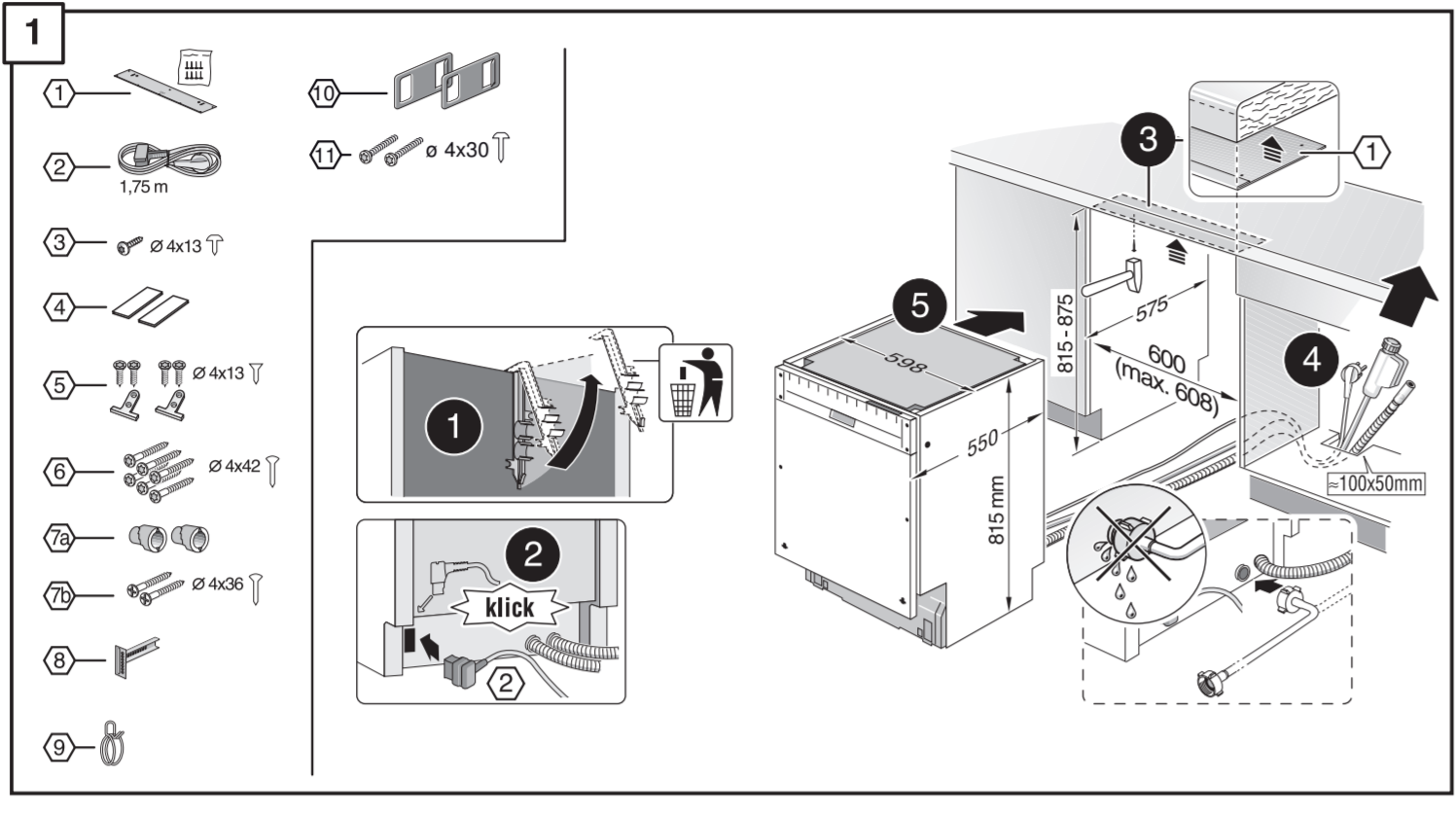
pl Instrukcja de montaj
*) obținutabilă la serviciul pentru clienți

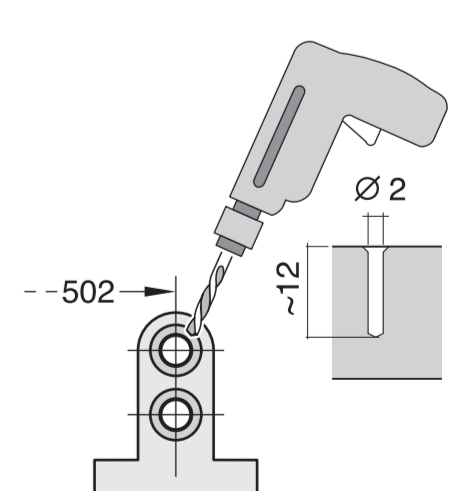
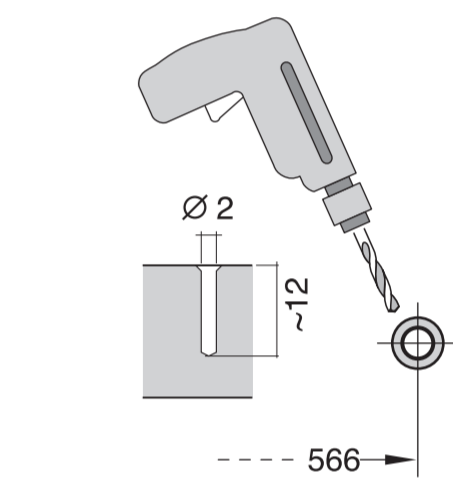
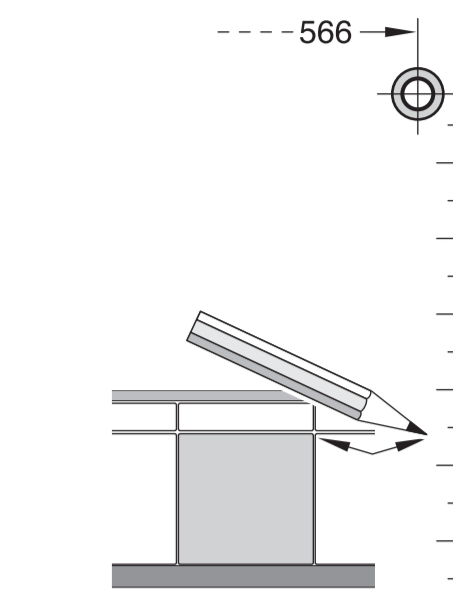
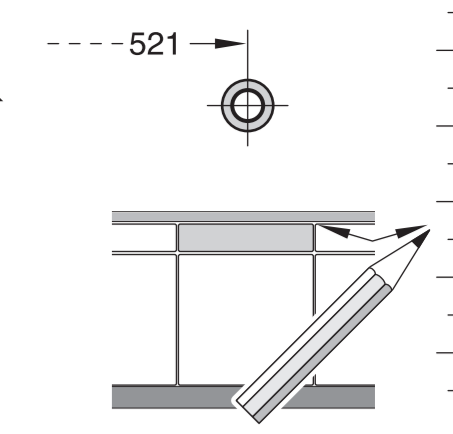
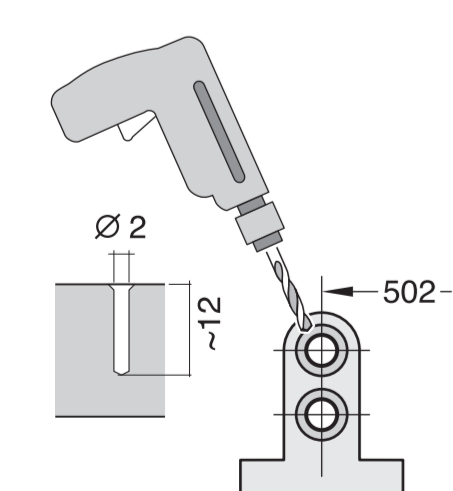
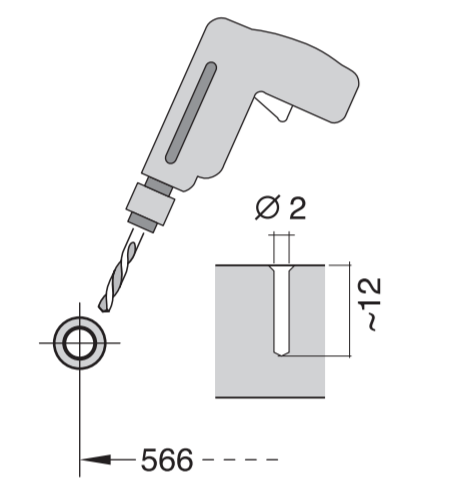
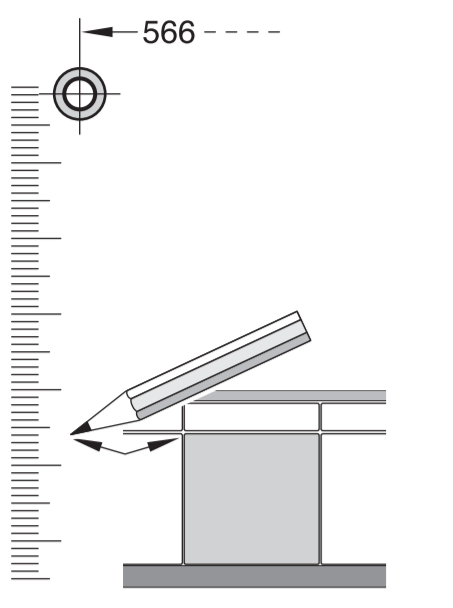
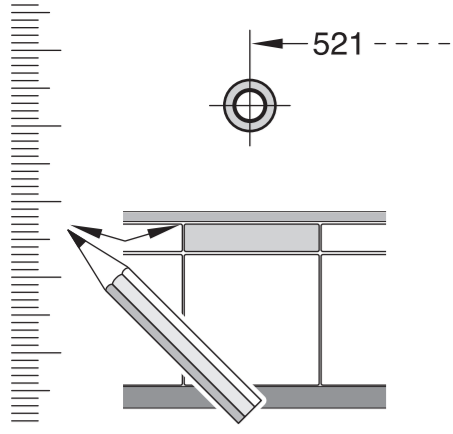
id Intruksi Pemasangan
*) bisa didapatkan melalui Customer Service

kk Іске қосу туралы нұсқаулар
*) Сервис қызмет көрсету органдың алуына жатады



GV 640 Voll-I - 81,5 cm 9001 107 560 (9505)





1

1 10
2 1.75 m 11 4x13 T
3 4x13 T 12 4x42 T
4 4x42 T 13 4x42 T
5 4x35 T 14 4x35 T
6 4x35 T 15 4x35 T
7 4x35 T 16 4x35 T
8 4x35 T 17 4x35 T
9 4x35 T 18 4x35 T
10 4x35 T 19 4x35 T
11 4x35 T 20 4x35 T
12 4x35 T 21 4x35 T
13 4x35 T 22 4x35 T
14 4x35 T 23 4x35 T
15 4x35 T 24 4x35 T
16 4x35 T 25 4x35 T
17 4x35 T 26 4x35 T
18 4x35 T 27 4x35 T
19 4x35 T 28 4x35 T
20 4x35 T 29 4x35 T
21 4x35 T 30 4x35 T
22 4x35 T 31 4x35 T
23 4x35 T 32 4x35 T
24 4x35 T 33 4x35 T
25 4x35 T 34 4x35 T

Mat-Nr. 622456

2a

2b

3

nicht einklemmen
do not pinch
ne pas coincier
No doblar

4

verspannen
brace
calar verticalement
Enrasar

0-60 mm
SW 13

5

6

7

8

min. 70 mm
max. 150 mm

einstellen
adjust
régler
ajustar

>150 mm

min. 70 mm
max. 150 mm

8

min. 70 mm
max. 150 mm

einstellen
adjust
régler
ajustar

>150 mm

min. 70 mm
max. 150 mm

9

10

11

c =	d =
650 mm	≥ 30 mm
660 mm	≥ 20 mm
670 mm	≥ 10 mm
680 - 725 mm	≥ 0 mm

max. 60 mm

Mat-Nr. 61953

12

Scheibe entfernen
remove disc
enlever le disque
Eliminar disco

max. 10 Nm

Dichtheit nach einem Spülgang prüfen.
Check for leaks after one wash cycle.
Vérifier l'étanchéité après un lavage.
Verificar la estanqueidad tras un ciclo de lavado

0.05 - 1 MPa
(0.5 - 10 bar)
max. 60°C

12

Mat-Nr. 350564

Mat-Nr. 644533

Mat-Nr. 644534

Mat-Nr. 657927

1
4
5A
6A
7A
8