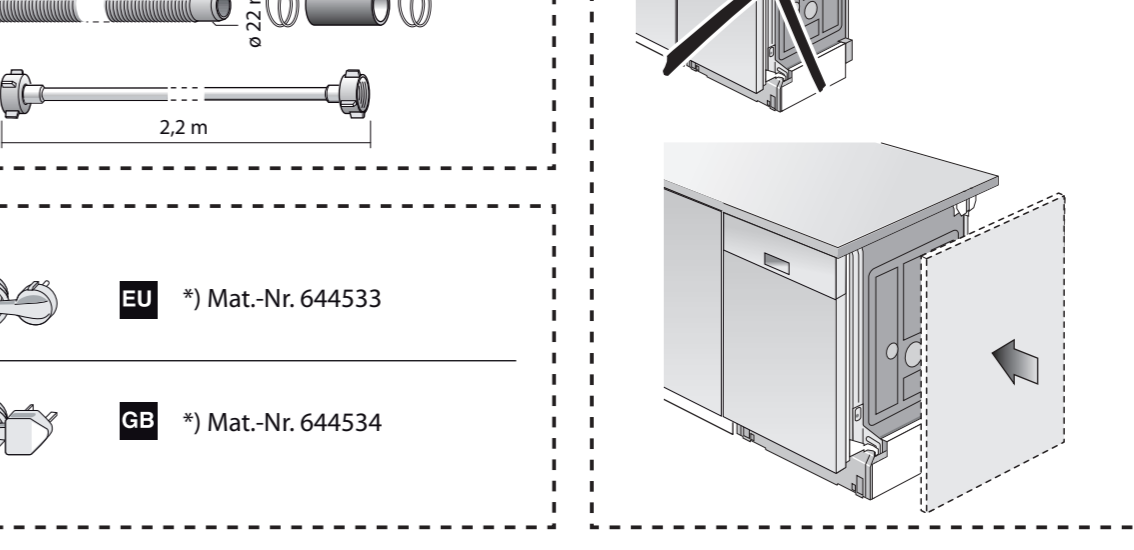
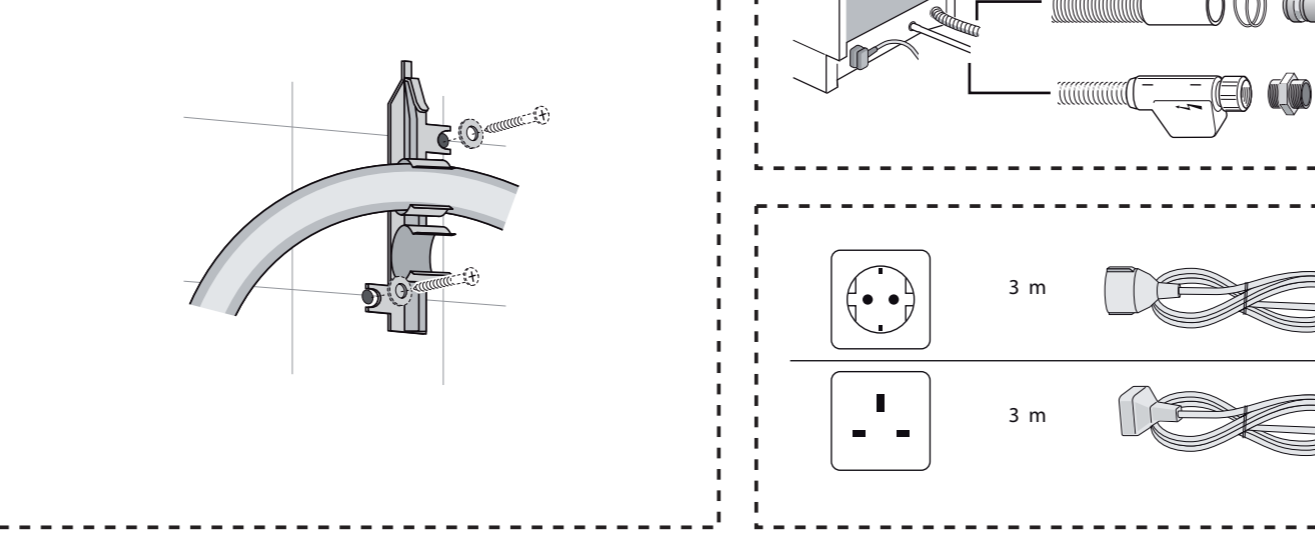
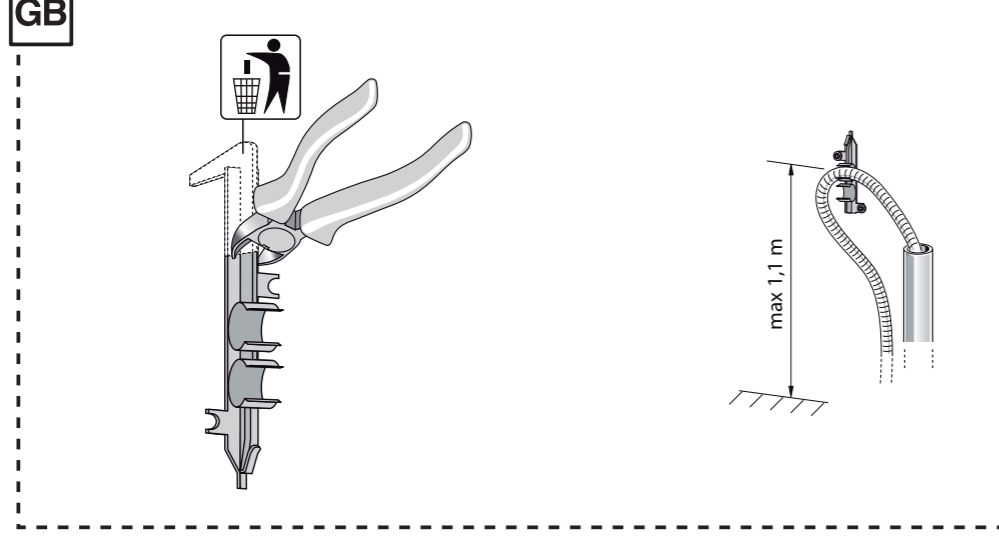
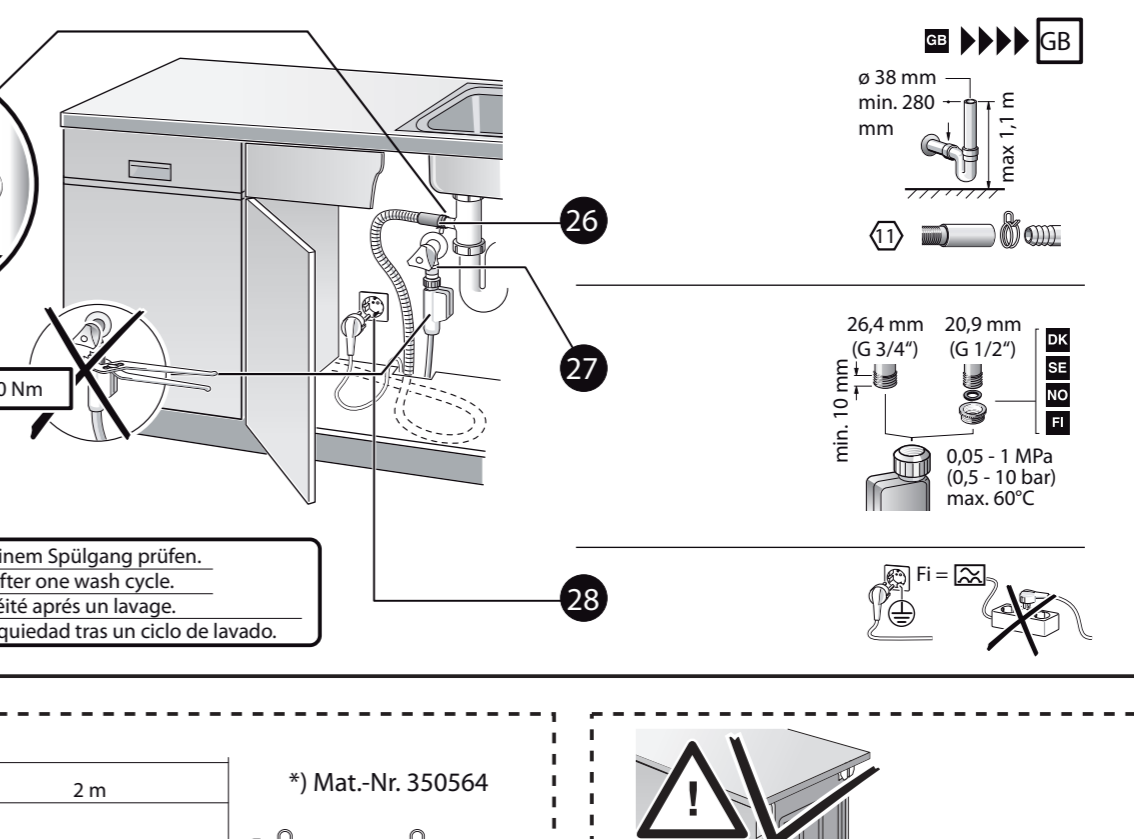
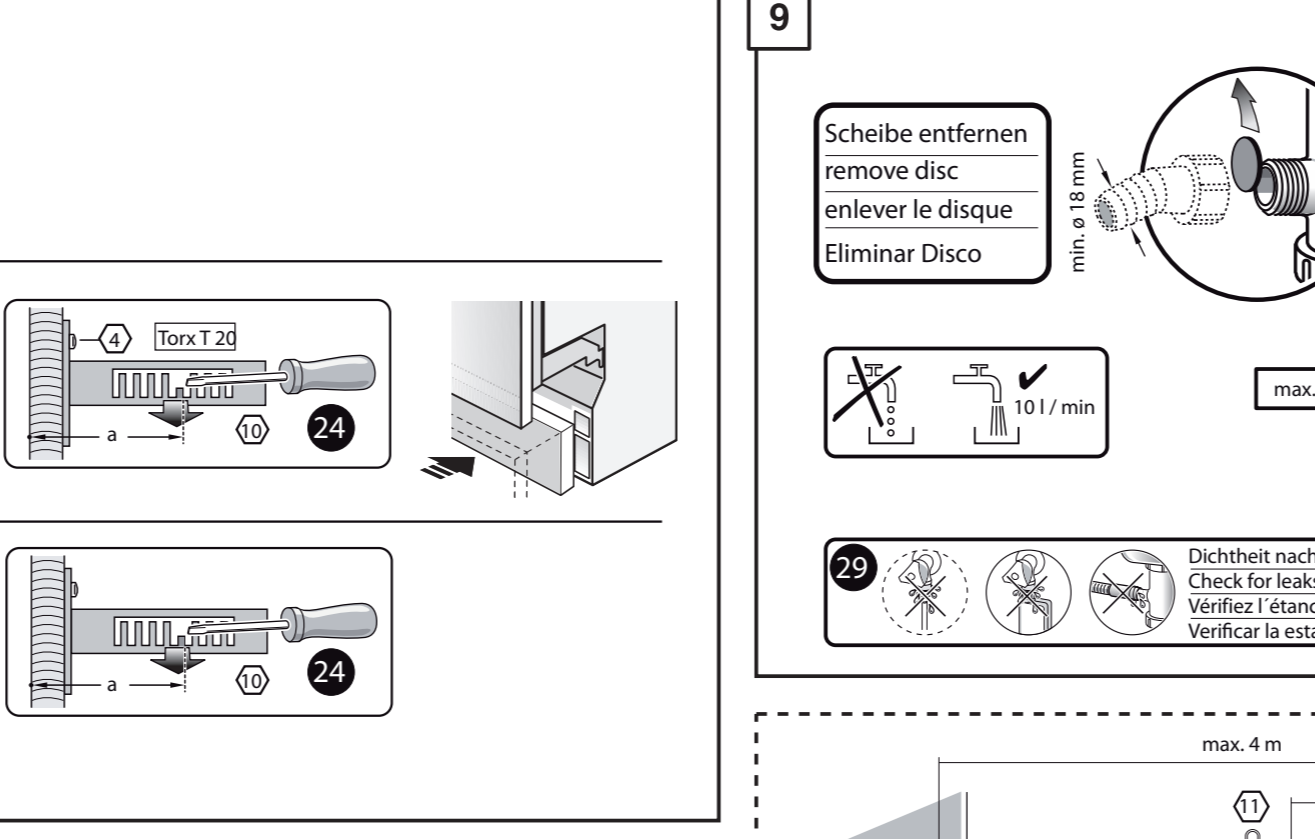
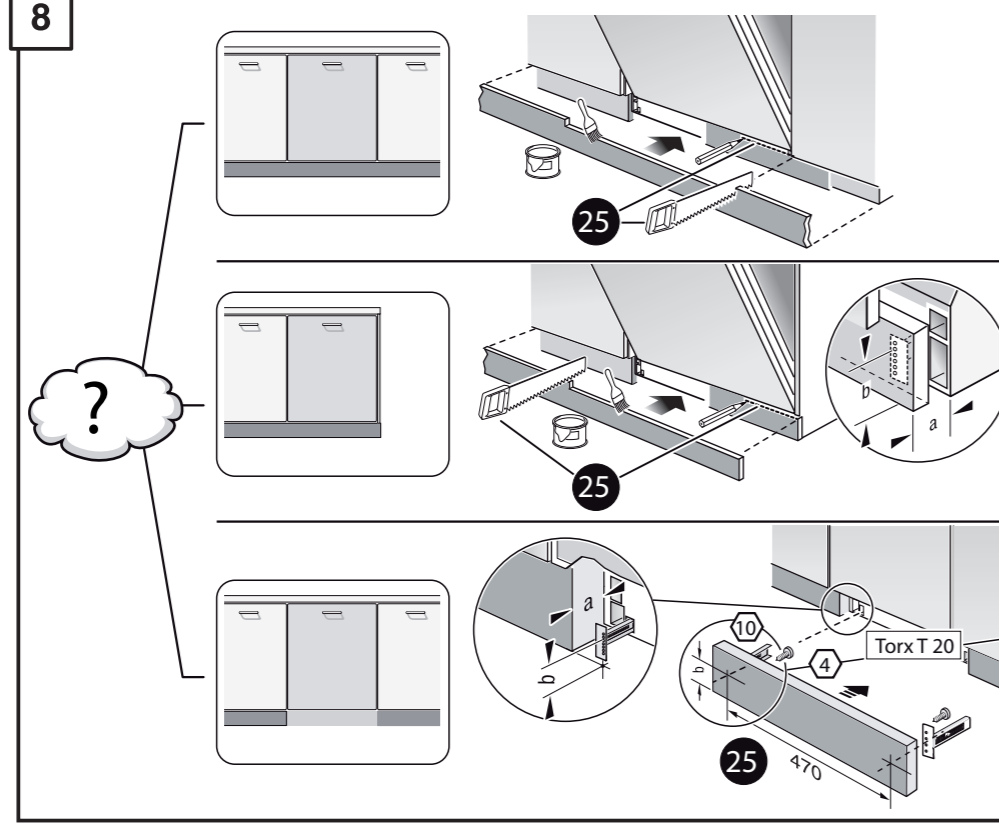
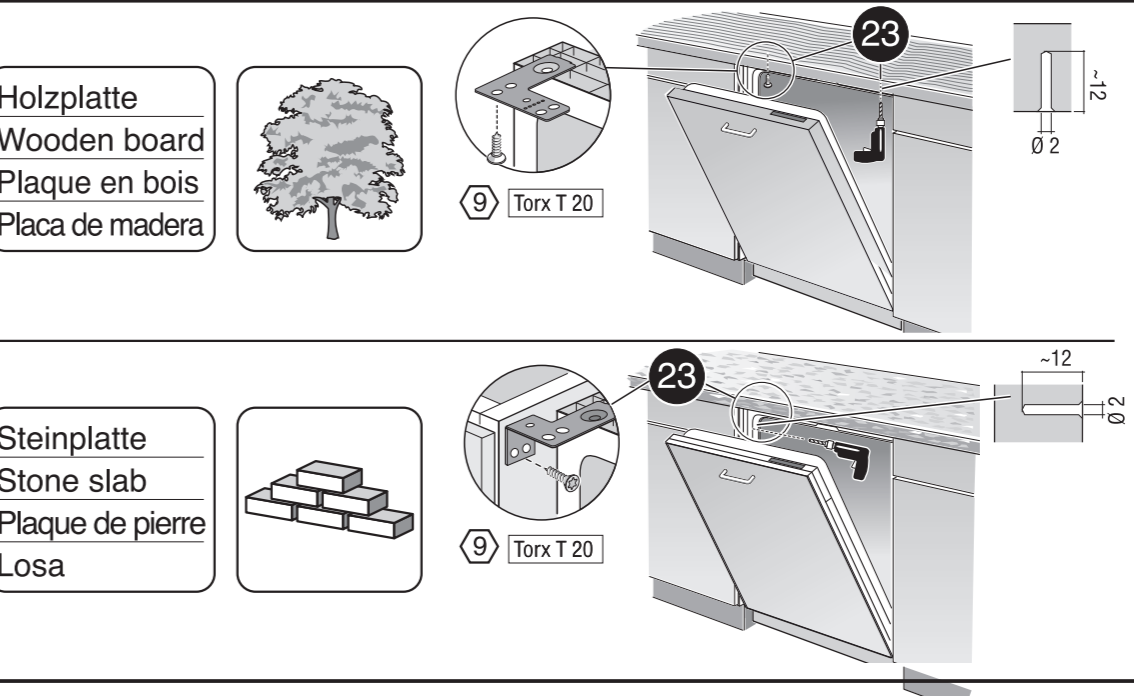
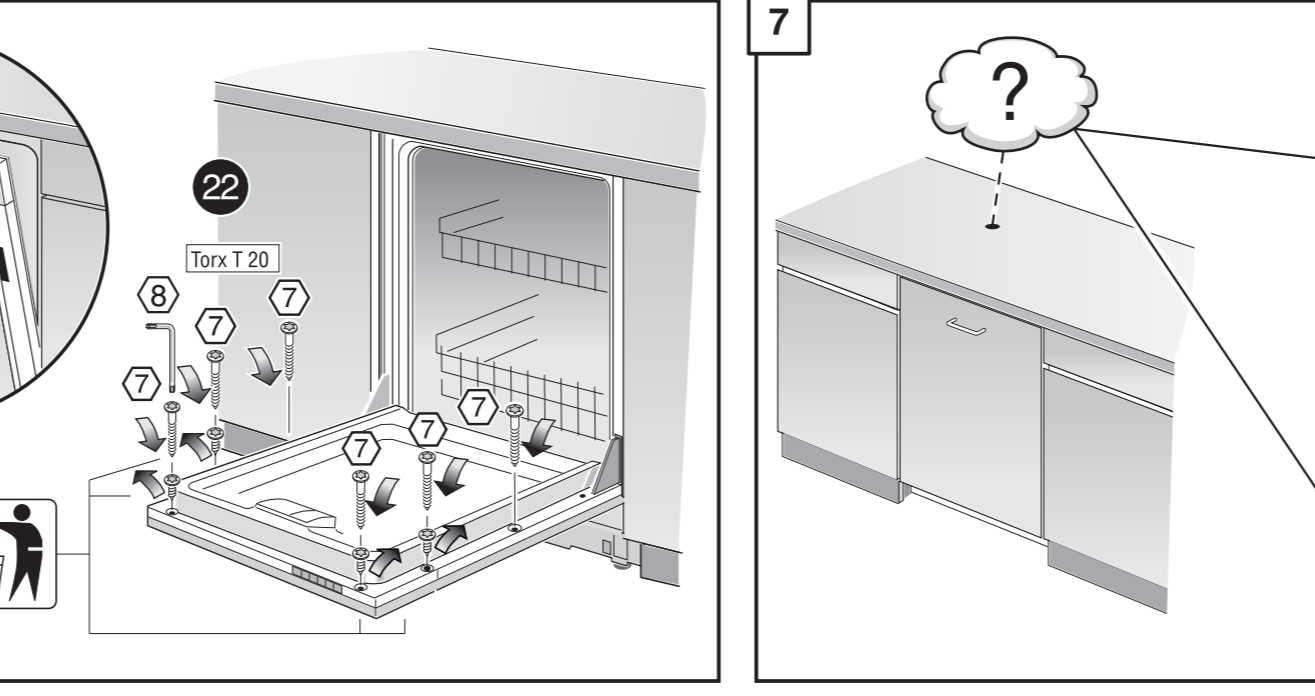
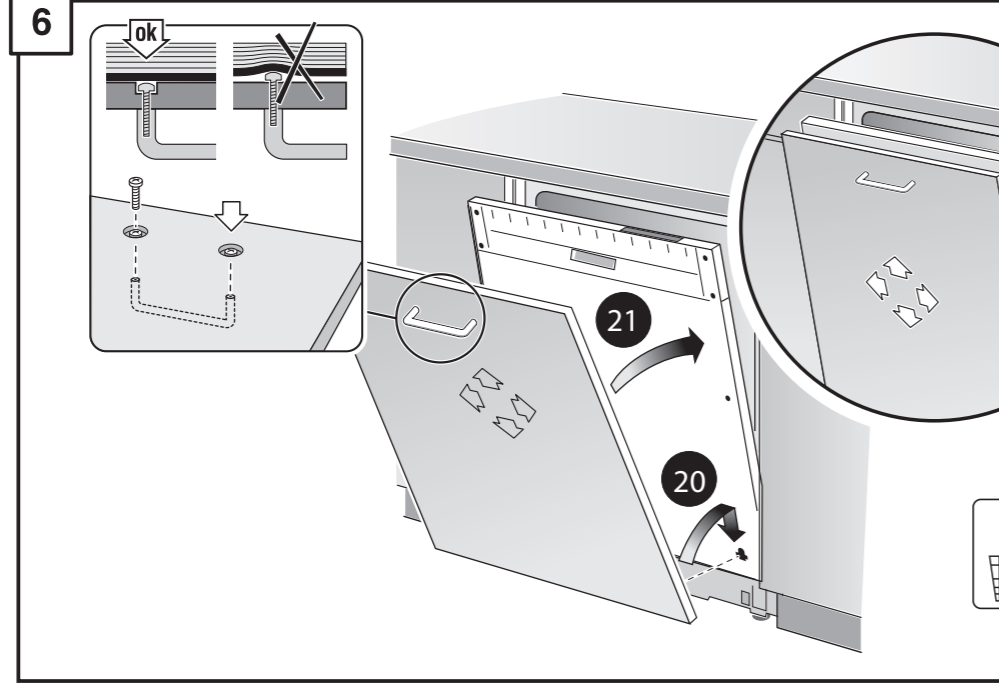
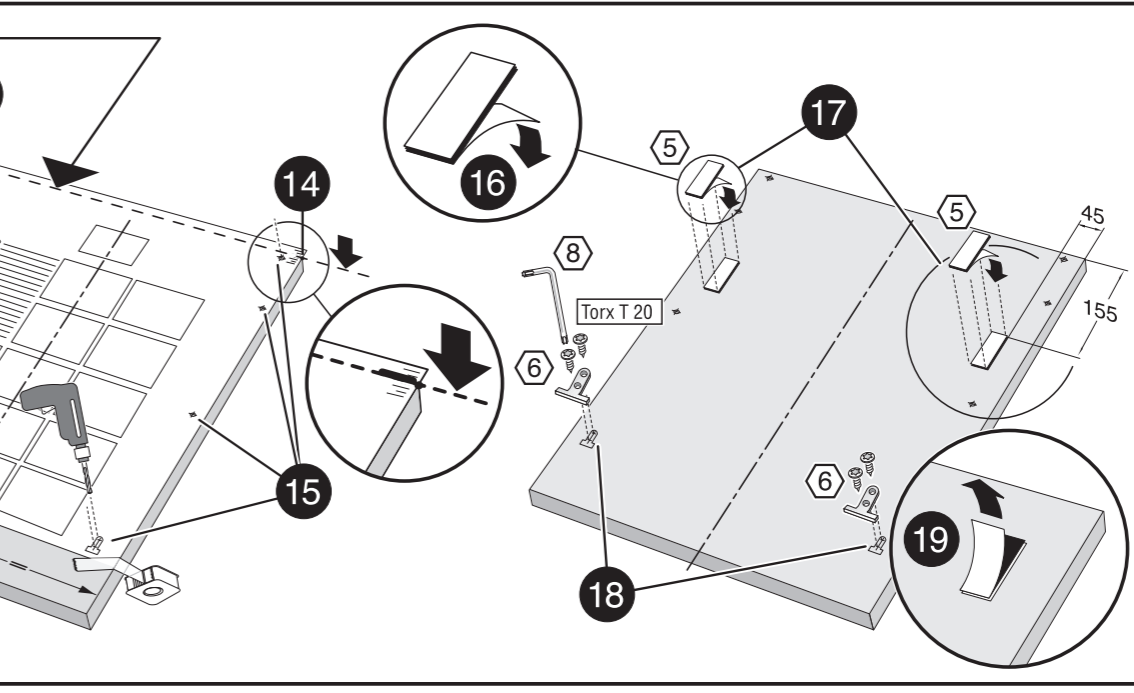
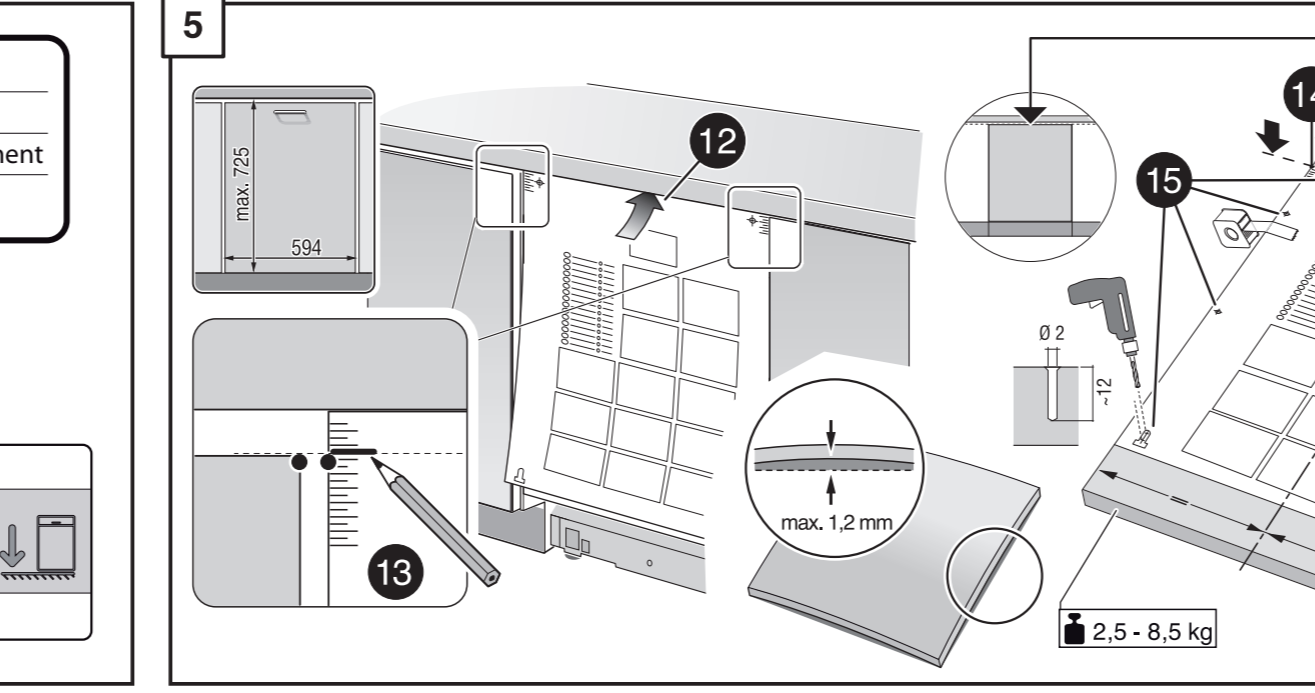
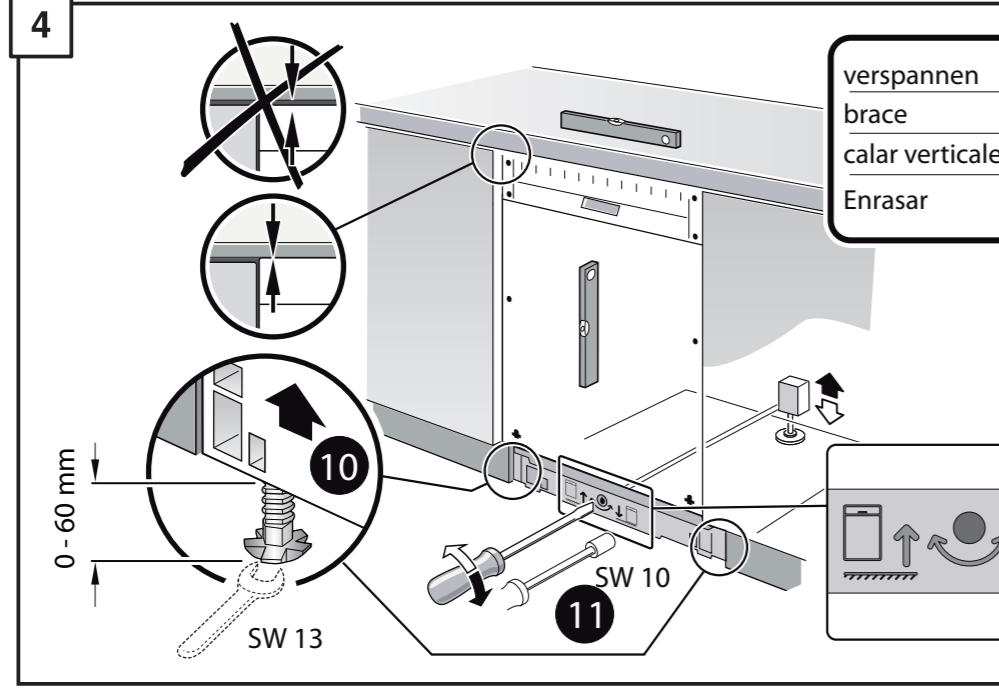
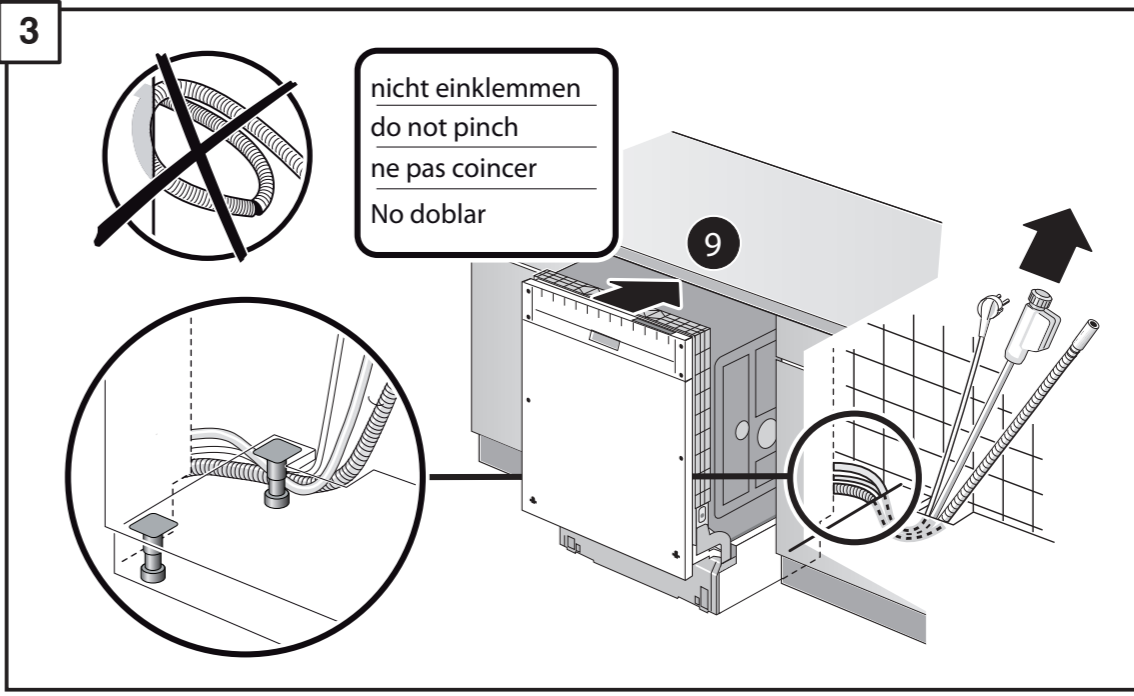
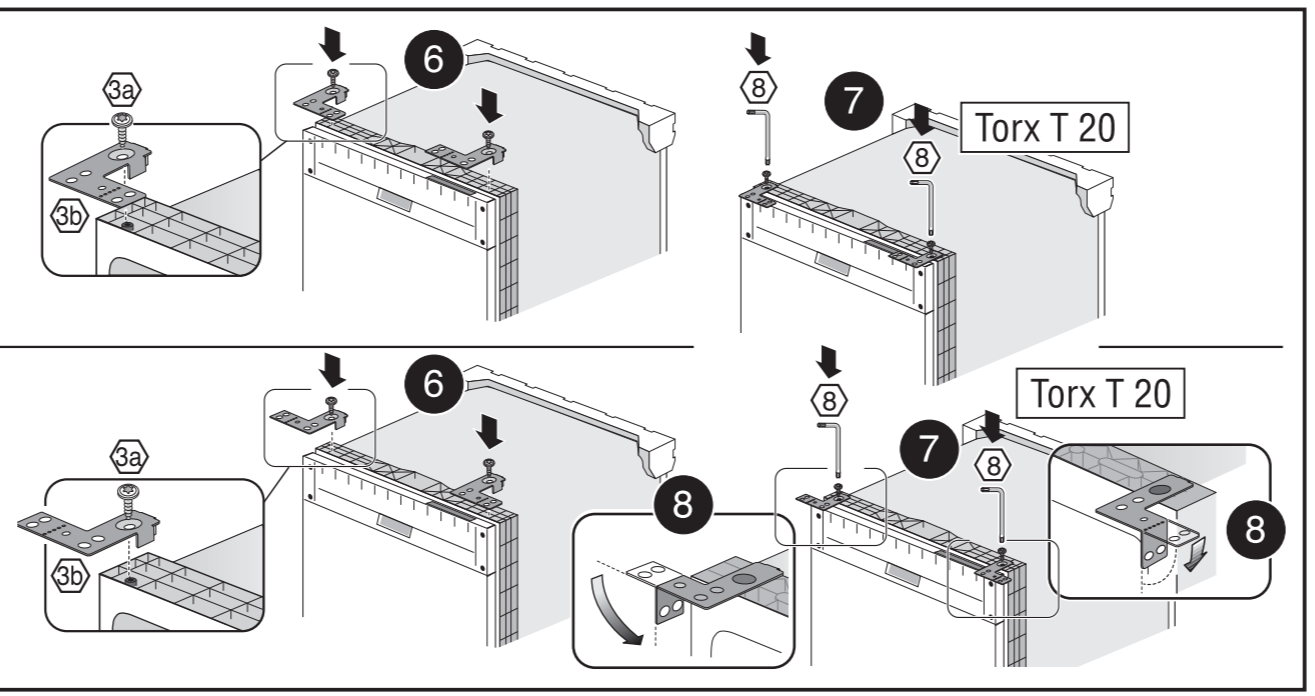
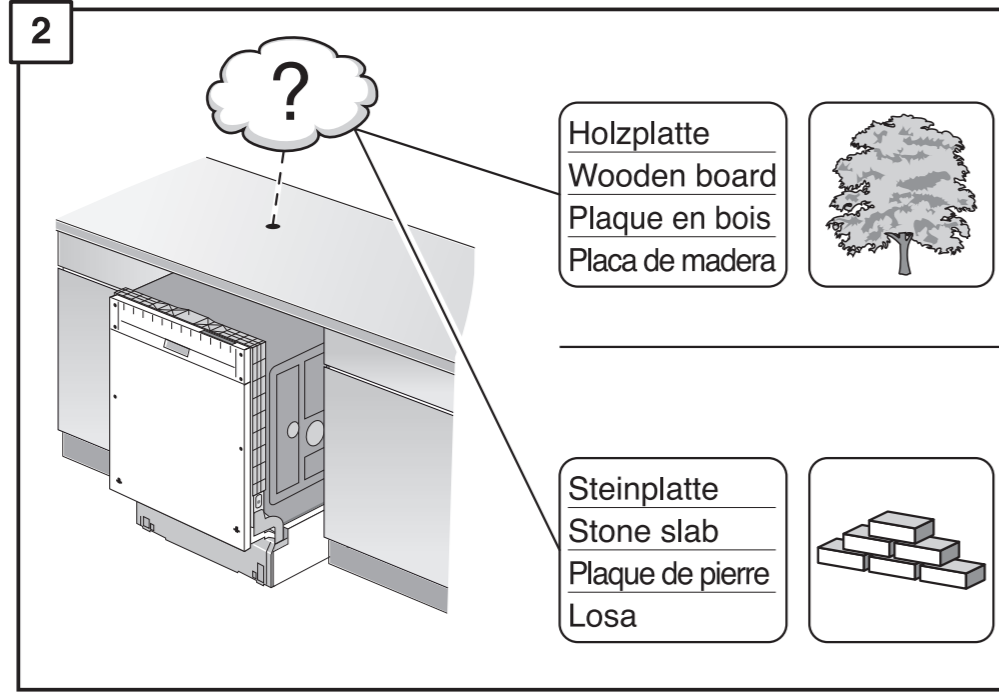
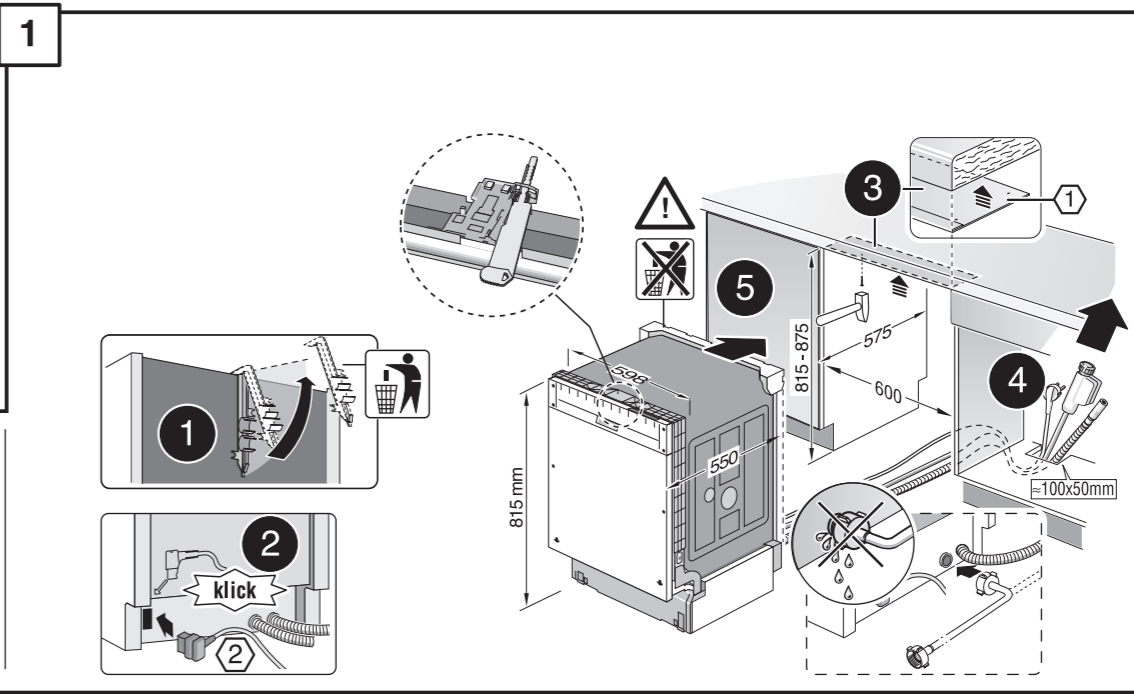
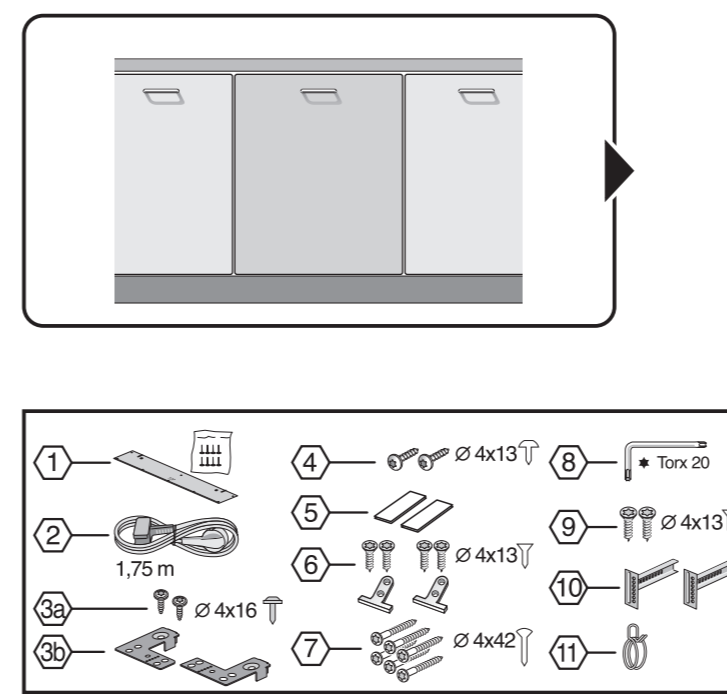
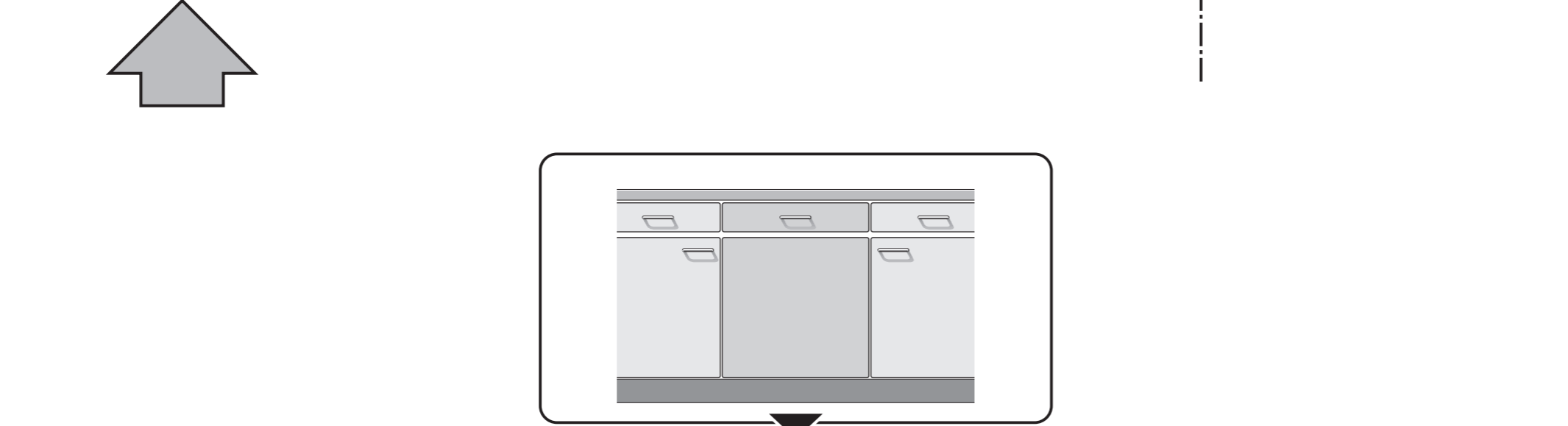
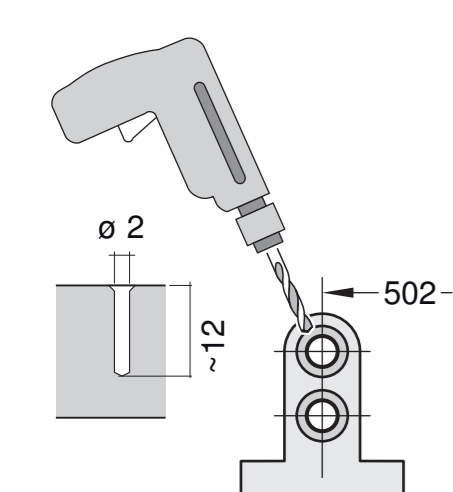
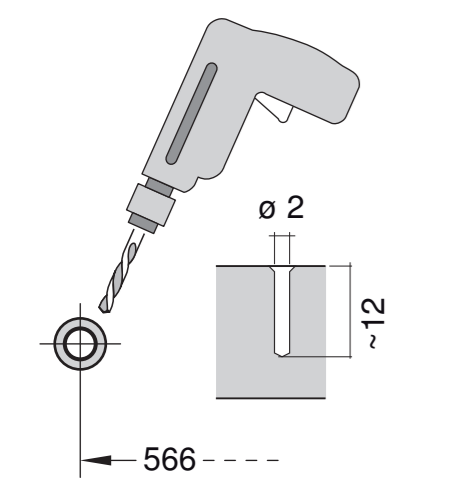
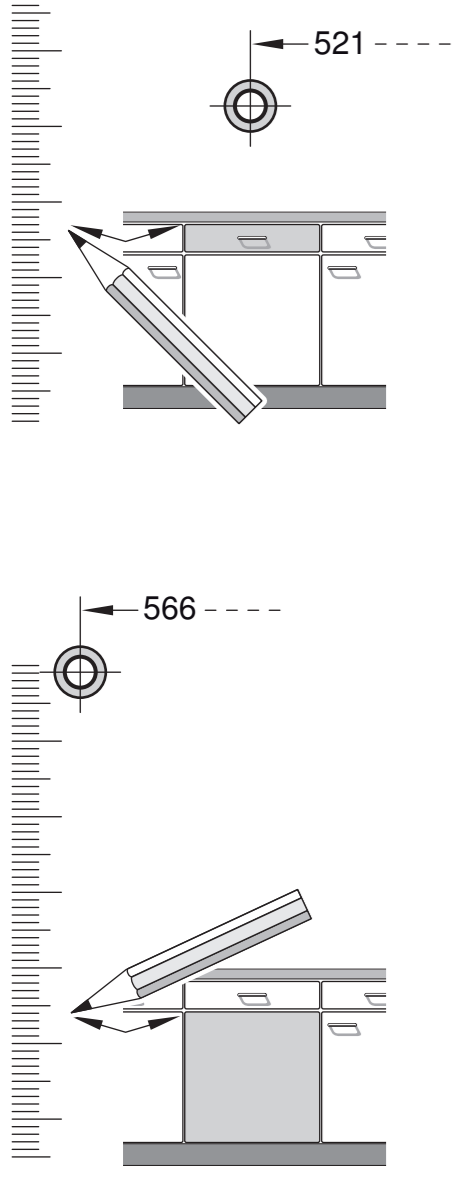


GV 640 B Voll-H - 81,5 cm - K, SW 9000 901 339 (9307)

- | | | |
|--|---|---|
| de Montageanleitung
*) über Kundendienst erhältlich | tr Montaj kılavuzu
*) Yetkili servis üzerinden alınabilir | sk Návod na montáž
*) Dostaneťe v službe zákazníkom |
| en Installation instructions
*) Available from customer service | ru Инструкция по монтажу
*) Можно получить в сервисном центре | cs Udhězuves për montim
*) Sigursheti nëpërmjet servisit |
| fr Notice de montage
*) Disponible par le biais du service après-vente | ca Montajni návod
*) K dispozícií pľas servisní službu | bs Uputa za montažu
*) Može se dobiti preko servise službe |
| nl Montagevoorschrift
*) Tegen meerprijs bij de Servicedienst verkrijgbaar | pl Instrukcja montażu
*) Do uzyskania w punkcie serwisowym | fa راهنمای مونتاژ
*) از مرکز خدمات پس از فروش تهیه فرمایید |
| it Istruzioni per il montaggio
*) Disponibili presso il servizio assistenza clienti | hu Szerelési utasítás
*) A vévőszolgáltatón keresztül kapható: | ar تعليمات التركيب
*) يمكن شتيها من مركز خدمة العملاء |
| el Οδηγός τοποθέτησης
*) Διατίθεται από την υπηρεσία τεχνικής εξυπηρέτησης πελατών | lv Uputa za montažu
*) Može dobiti kod službe održavanja | ko 설치 설명서
*) 고객서비스 센터에서 구입 가능 |
| es Instrucciones de montaje
*) Se puede adquirir a través del Servicio de Asistencia Técnica Oficial de la marca | uk Уластво за монтажа
*) се добива преку службата за купувачи | zh 安装说明书
*) 可向售后服务站索取 |
| pt Instruções de montagem
*) Pode ser adquirido nos nossos Serviços Técnicos | sr Navodilo za montažo
*) Lahko nabavite v servisni službi | ro Instrucțiune de montaj
*) Obțineabilă la serviciul pentru clienți |
| sv Monteringsanvisning
*) Kan fås via Service | sl Uputstvo za montažu
*) Može se nabaviti preko servise službe | uk Інструкція з монтажу
*) Можна отримати через сервісну службу |
| da Monteringsvejledning
*) Læs hos kundeservice | lt Montavimo instrukcija
*) Ja galima gauti klientų aptarnavimo servise | tr İşletme talimatları
*) İstenirlerse müşteri hizmetleri üzerinden alınabilir |
| fi Asemennusohje
*) Saatavissa huoltopalvelusta | lv Montāžas pamācība
*) Var saņemt servisa dienestā | kk Іске қосу туралы нұсқаулар
*) Сервис қызметі керсету орталығында алуына жатады |





1

- 1
- 2 1,75 m
- 3
- 4
- 5
- 6
- 7
- 8
- 9
- 10
- 11

2

Holzplatte
Wooden board
Plaque en bois
Placa de madera

Steinplatte
Stone slab
Plaque de pierre
Losa

3

nicht einklemmen
do not pinch
ne pas coincer
No doblar

4

verspannen
brace
caler verticalement
Enrasar

5

6

7

2,5 - 8,5 kg

8

Holzplatte
Wooden board
Plaque en bois
Placa de madera

Steinplatte
Stone slab
Plaque de pierre
Losa

9

10

Scheibe entfernen
remove disc
enlever le disque
Eliminar Disco

max. 10 Nm

Dichtheit nach einem Spülgang prüfen.
Check for leaks after one wash cycle.
Vérifiez l'étanchéité après un lavage.
Verificar la estanqueidad tras un ciclo de lavado.

max. 4 m

2 m

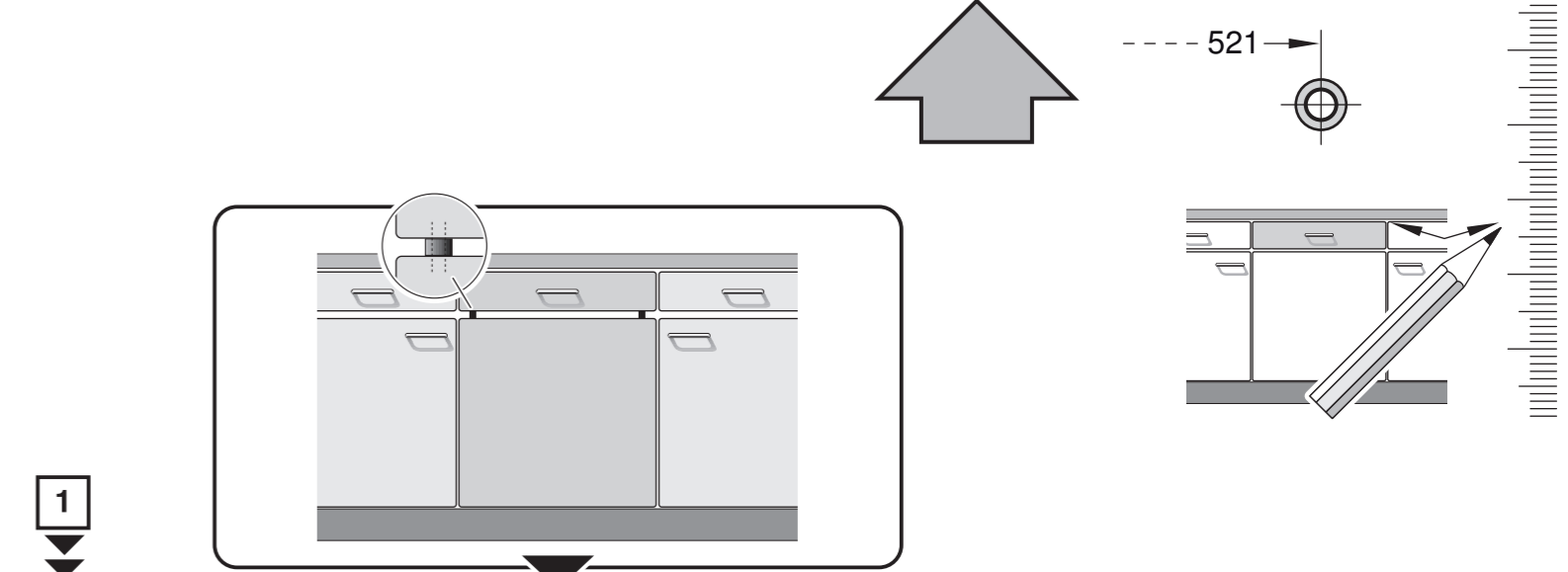
Mat.-Nr. 350564

3 m

EU *) Mat.-Nr. 644533

3 m

GB *) Mat.-Nr. 644534



1

4

5A

6A

2,5 - 8,5 kg

7A

max. 1,2 mm

8 >>> **12**

9

10

Scheibe entfernen
remove disc
enlever le disque
Eliminar Disco

max. 10 Nm

Dichtheit nach einem Spülgang prüfen.
Check for leaks after one wash cycle.
Vérifiez l'étanchéité après un lavage.
Verificar la estanqueidad tras un ciclo de lavado.

