

MSM6...N AU



BOSCH

en Operating instructions

For your safety

This accessory is designed for the hand blender MSM6... .
Follow the operating instructions for the hand blender.
The accessories are suitable only for the use described in these instructions.

▲ Safety instructions for this appliance

Risk of injury from sharp blades/rotating drive!

Never grip the blade in the universal cutter.
Take hold of the universal cutter blade by the plastic handle only.
Never clean the blades with bare hands. Use a brush.

Important!

Do not attach or remove accessories until the appliance is at a stand-still.

Never use the hand blender/blender foot in the universal cutter.
The universal cutter is not microwave-safe.

Never immerse the attachment of the universal cutter in liquids and do not clean under flowing water or in the dishwasher.

Never insert the whisk into the base unit without the gear attachment.
Never immerse the gear attachment in liquids and do not clean under flowing water or in the dishwasher.

Before use, read these instructions carefully in order to become familiar with important safety and operating instructions for this appliance.

Please keep the operating instructions in a safe place. If passing on the appliance to a third party, always include the operating instructions.

Universal cutter

Please fold out the illustrated pages.

Fig. ▲

- 1 Universal cutter
- 2 Blade
- 3 Attachment
- 4 Lid

A universal cutter can be ordered from customer service (order no. 657247).

Operation

The universal cutter is suitable for cutting meat, hard cheese, onions, herbs, garlic, fruit, vegetables, nuts, almonds.

With the universal cutter use the appliance at full power to prepare honey spread (according to the recipe see **Fig. ❸**).

Always observe the maximum quantities and processing times in the table (**Fig. ❸**).

Warning!

The universal cutter must be completely assembled before use.

Caution!

Before cutting meat, remove gristle, bones and sinews.

The universal cutter is not suitable for cutting very hard items (coffee beans, radishes, nutmeg) and frozen food (fruit, etc.).

Fig. B

- Place the universal cutter on a smooth, clean work surface and press.
- Insert the blade.
- Add food.

Warning!

Blade must sit straight in the universal cutter so that the attachment sits correctly (Fig. B-3).

- Place the attachment on the universal cutter and rotate in a clockwise direction until it “clicks” into position.
- Place the base unit on the attachment and lock into position.
- Insert the mains plug.
- Hold the base unit and universal cutter firmly and switch on the appliance (Turbo speed).
- Release the On button after processing.

After using the appliance

- Remove mains plug.
- Press the release buttons and remove the base unit from the attachment.
- Rotate the attachment in an anti-clockwise direction and remove from the universal cutter.
- Take hold of the blade by the plastic handle and take out.
- Place the lid on the universal cutter to keep in the processed ingredients.

Cleaning**Warning!**

Never immerse the attachment of the universal cutter in liquids and do not clean under flowing water or in the dishwasher.

- Universal cutter and blade are dishwasher-proof.
- Wipe the attachment with a damp cloth only.

Whisk

Please fold out the illustrated pages.

Fig. A**5 Gear attachment for whisk****6 Whisk**

A whisk can be ordered from customer service (order no. 657379).

Operation

The whisk is suitable for whipping cream, beating egg whites and milk froth (from hot (max. 70 °C) and cold milk (max. 8 °C)) as well as for preparing sauces and desserts.

⚠ Risk of scalding!

When processing hot milk, use a tall, narrow receptacle for blending. Hot milk may splash and scald you.

Fig. D

- Put ingredients into the blender jug.
- Place the gear attachment on the base unit and lock into position.
- Insert the whisk into the gear attachment and lock into position.

Warning!

Never insert the whisk into the base unit without the gear attachment (Fig. D-3).

- Set required speed using the speed control (if fitted) (recommendation: high speed).
- Grip base unit and blender jug and press required On button.
- Release the On button after processing.

After using the appliance

- Remove mains plug.
- Press the release buttons and remove the base unit from the gear attachment.
- Remove the whisk from the gear attachment.

Cleaning**Warning!**

Never immerse the gear attachment in liquids and do not clean under flowing water or in the dishwasher.

- The whisk can be cleaned in the dishwasher.
- Wipe the gear attachment with a damp cloth only.

Robert Bosch Hausgeräte GmbH

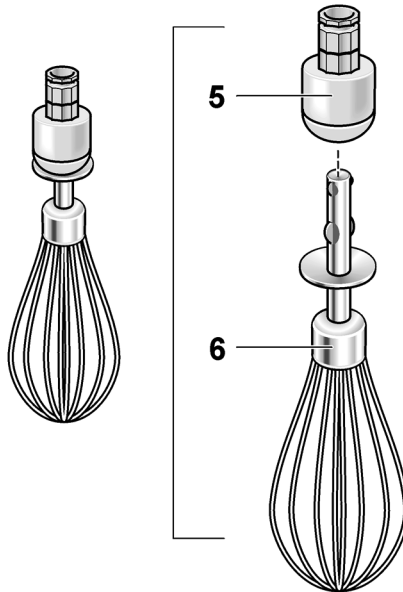
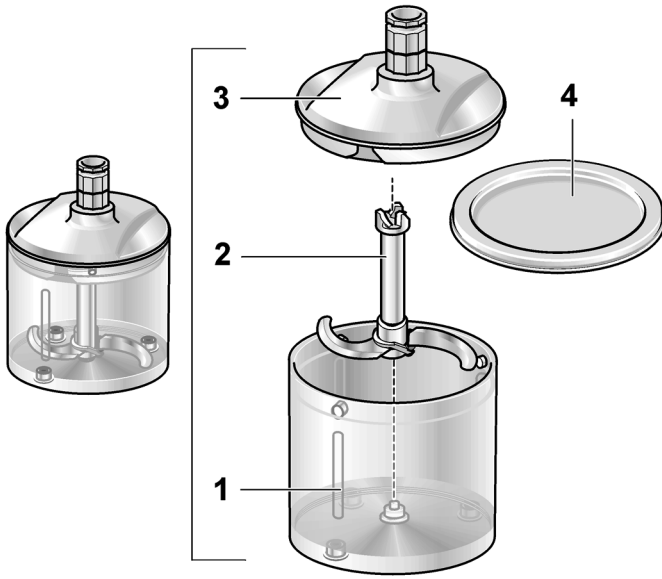
Carl-Wery-Str. 34

81739 München

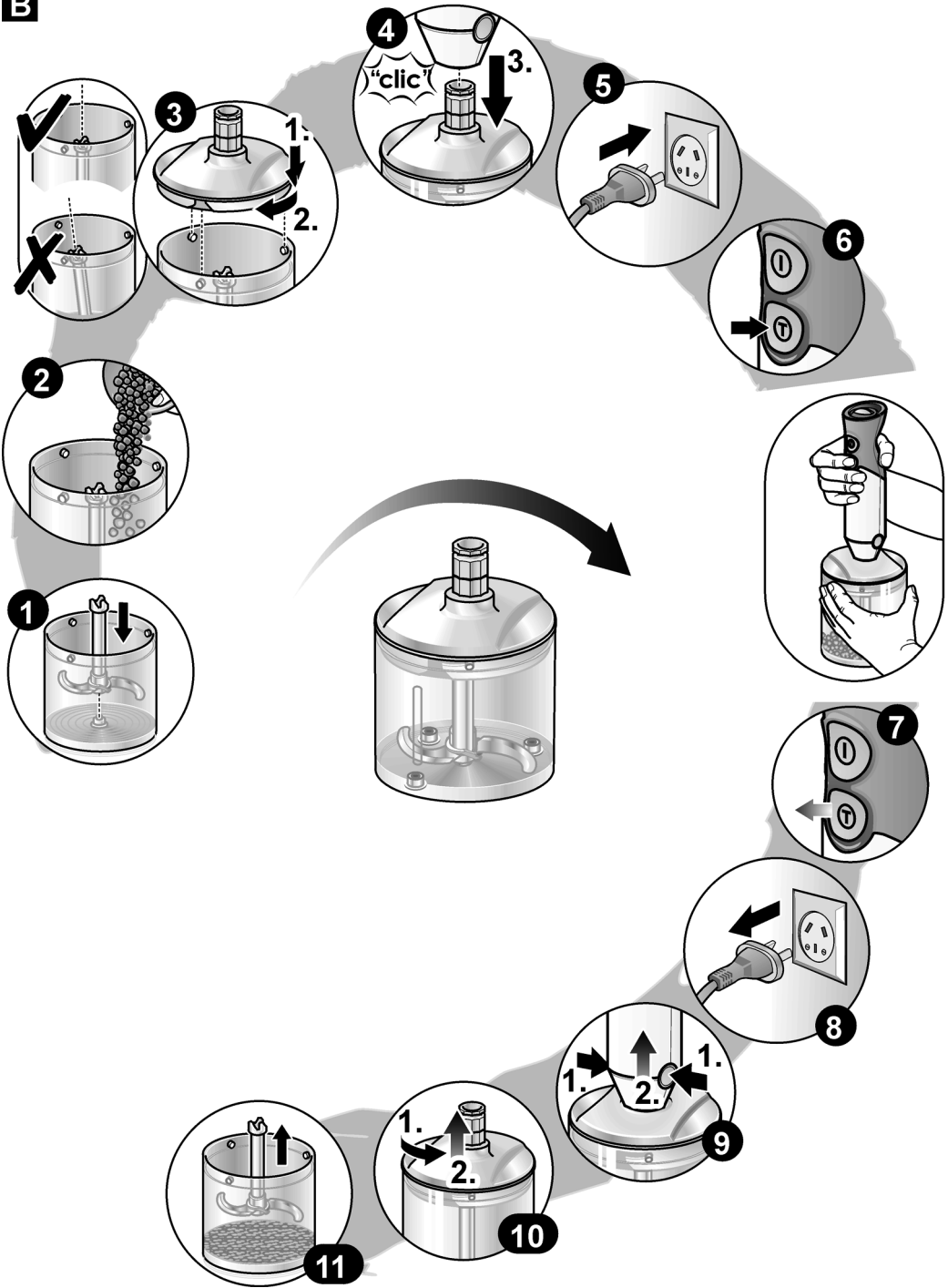
Germany



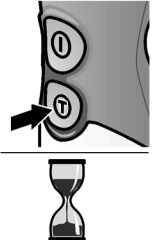






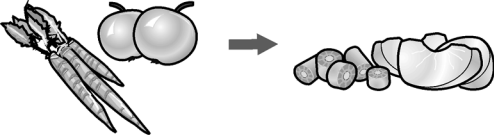


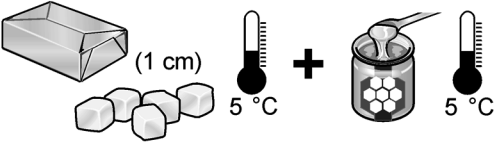
www.bosch-home.com

A



B



C 		
	100 g	10–20 s
	150 g	5 s
	100 g	10 s
	15 g	20–30 s
	20 x 	15 s
	100 g	15 s
	100 g	20 s
	100 g	30–40 s
	CNHR24: 50 g + 90 g CNHR25: 80 g + 130 g CNHR26: 90 g + 140 g	5 s 5 s 5 s

D

