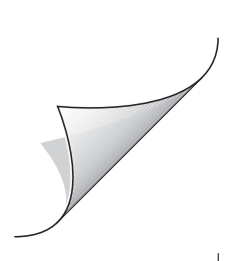
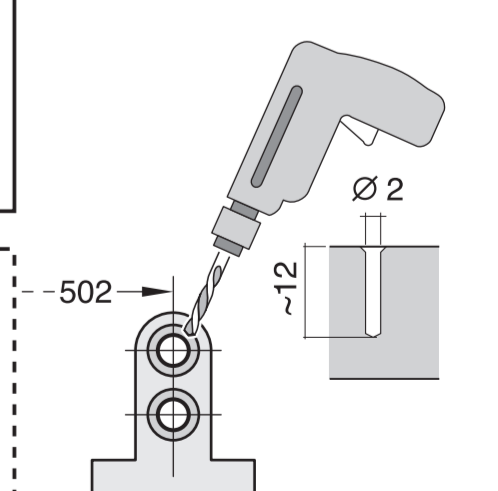
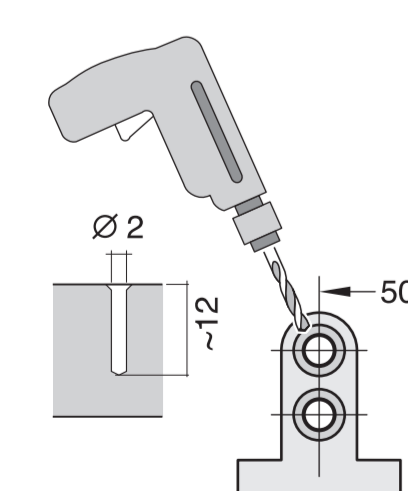
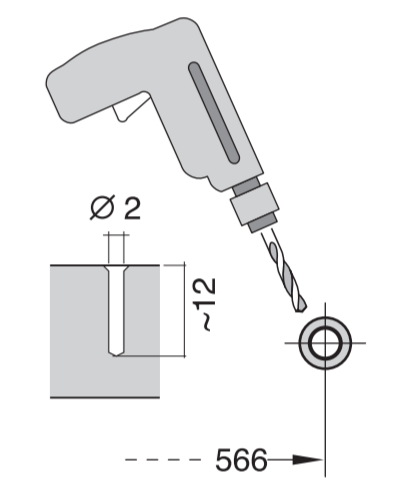
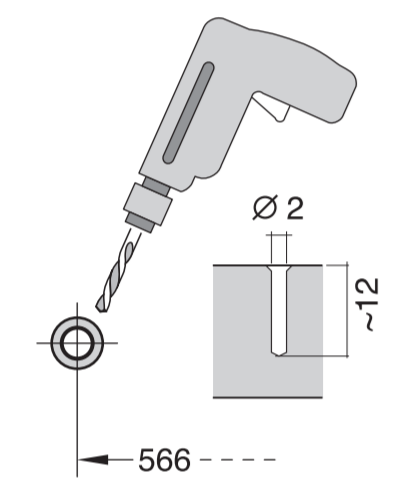
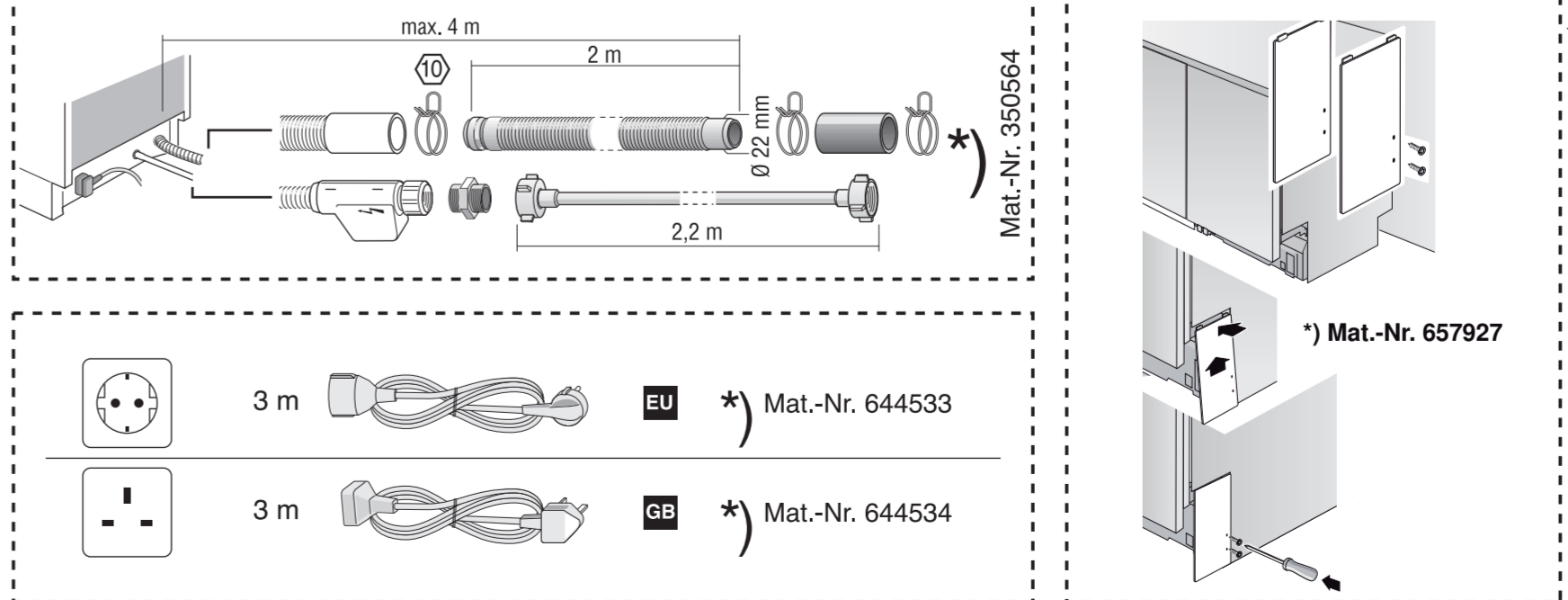
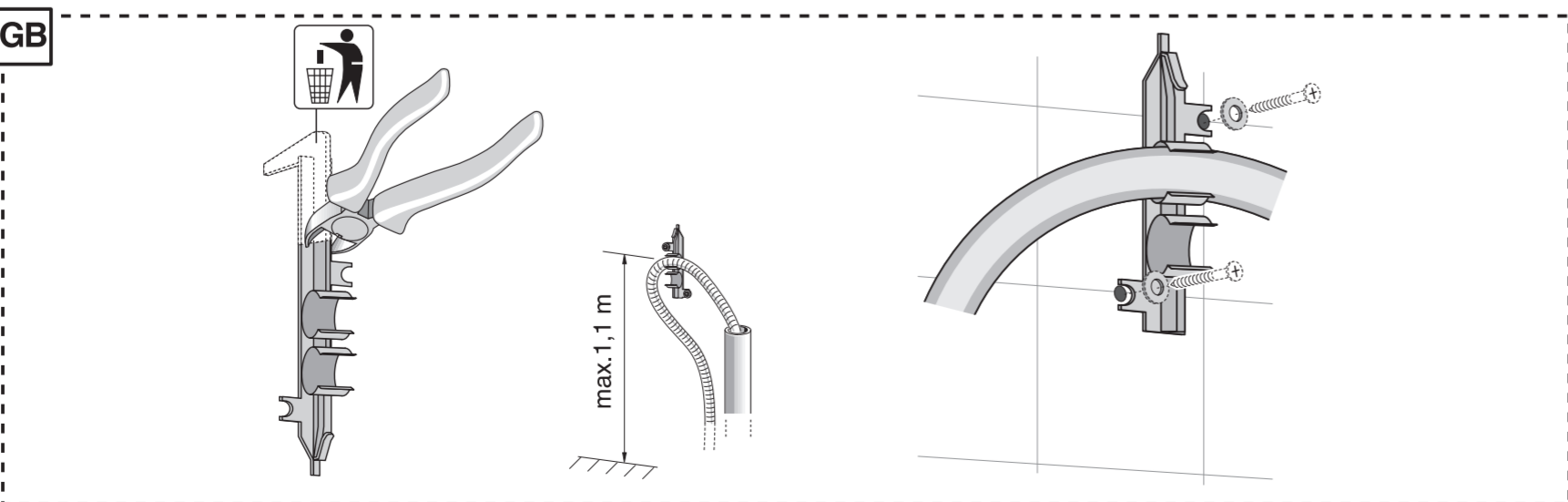
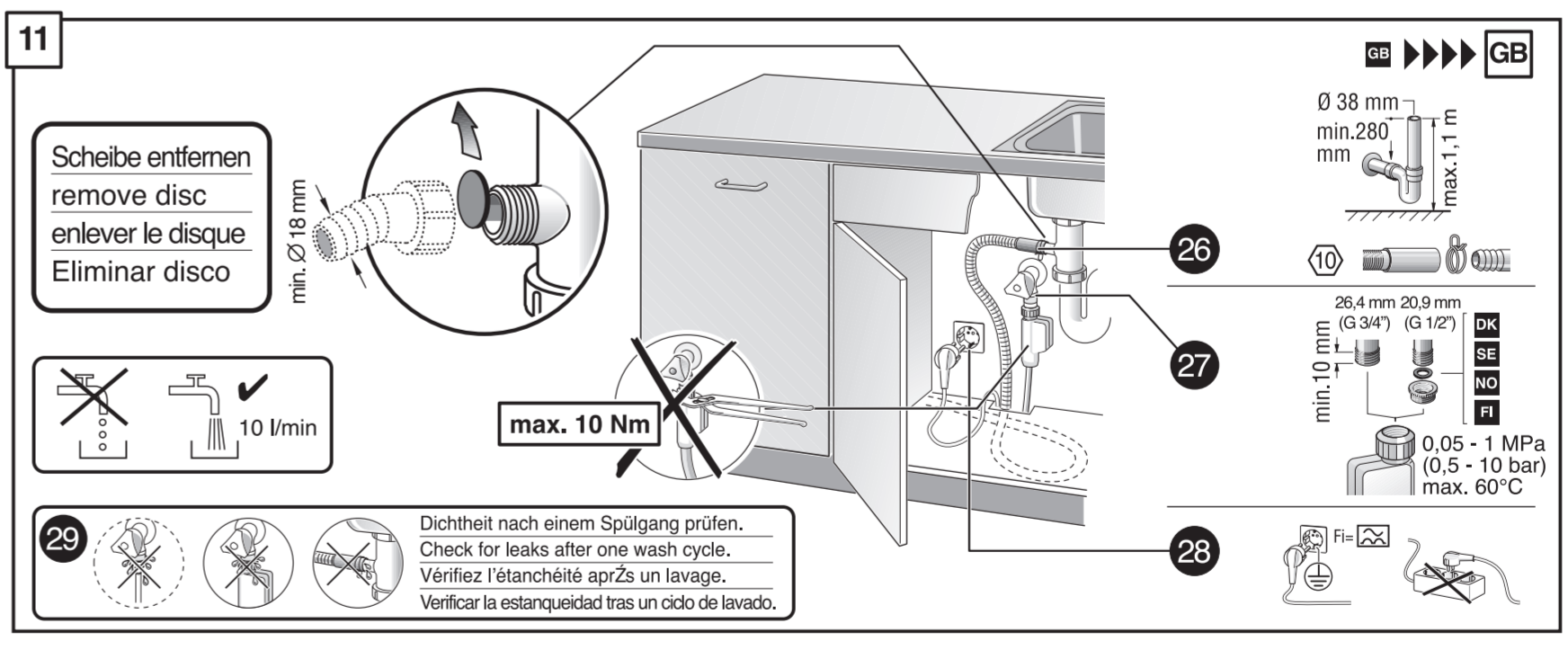
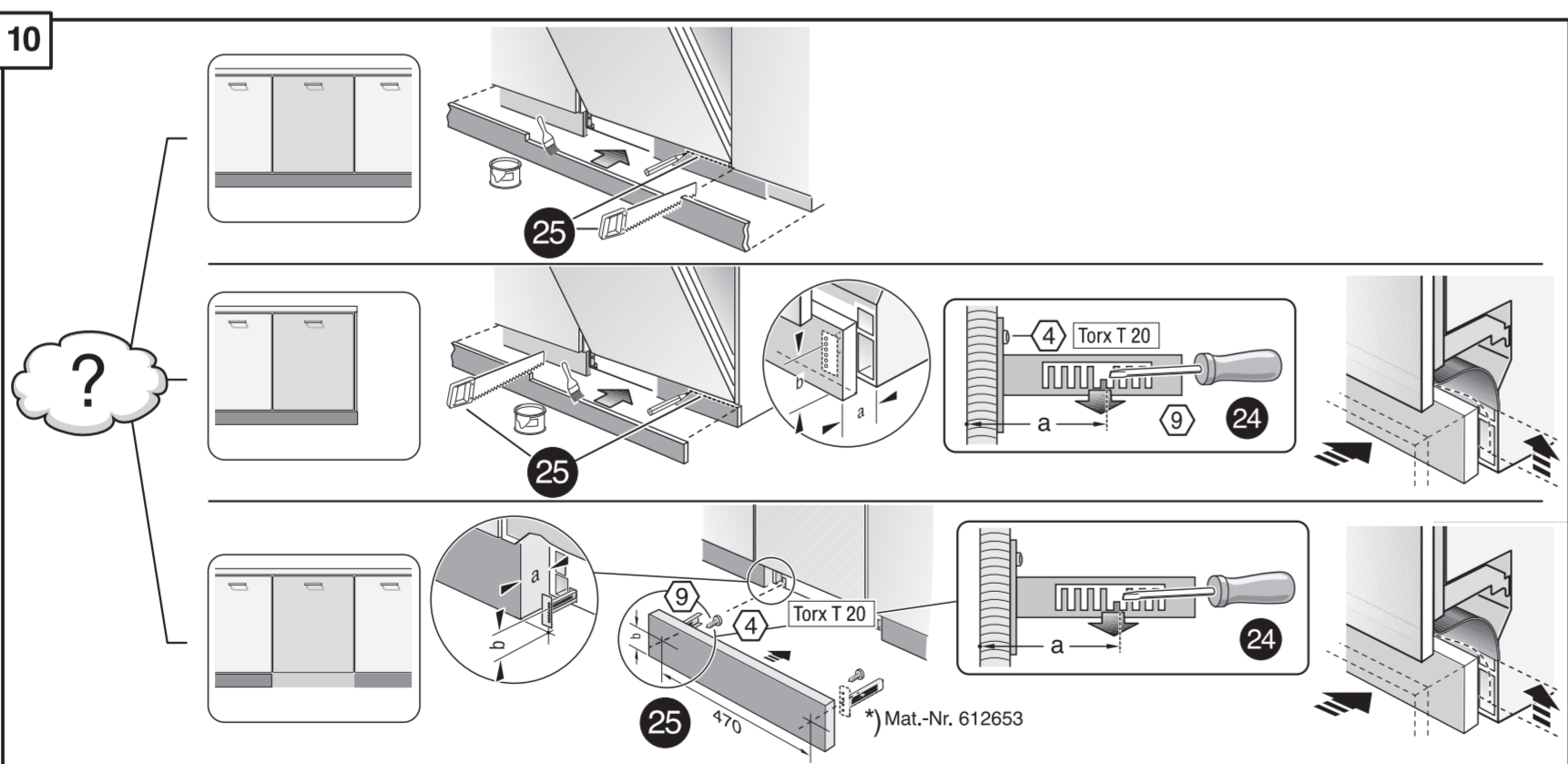
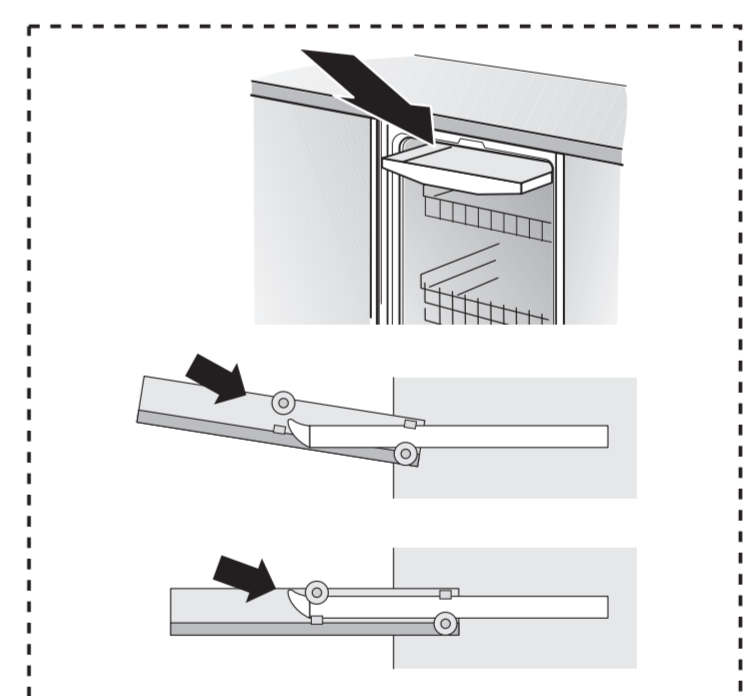
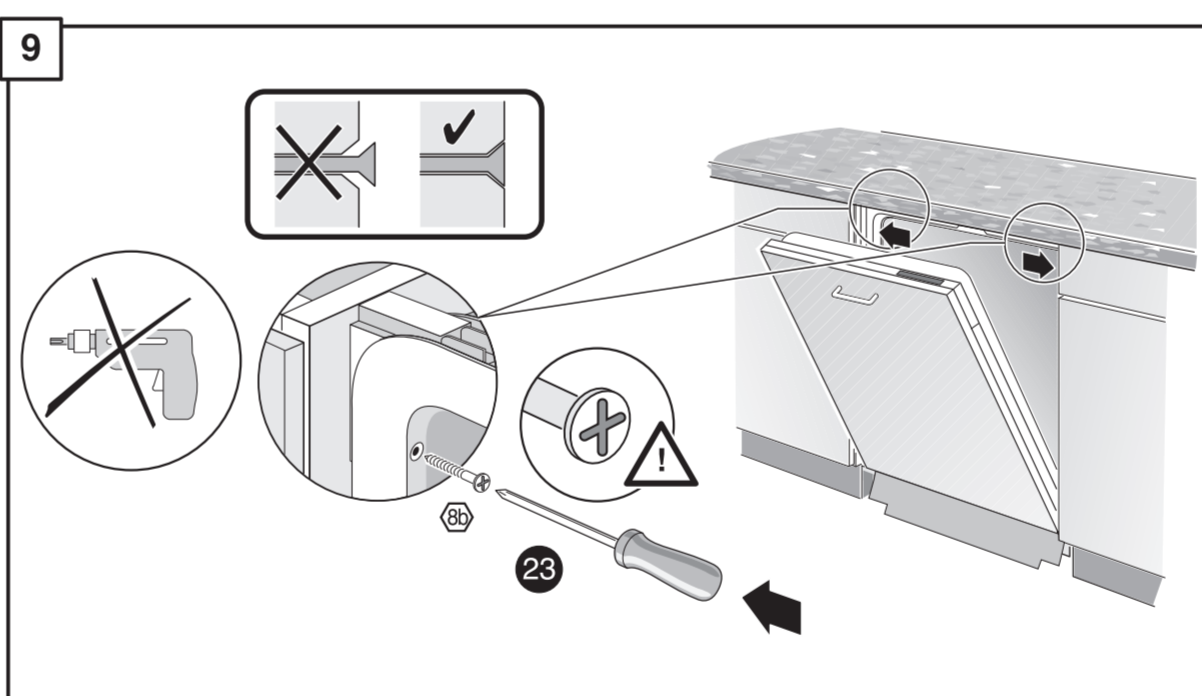
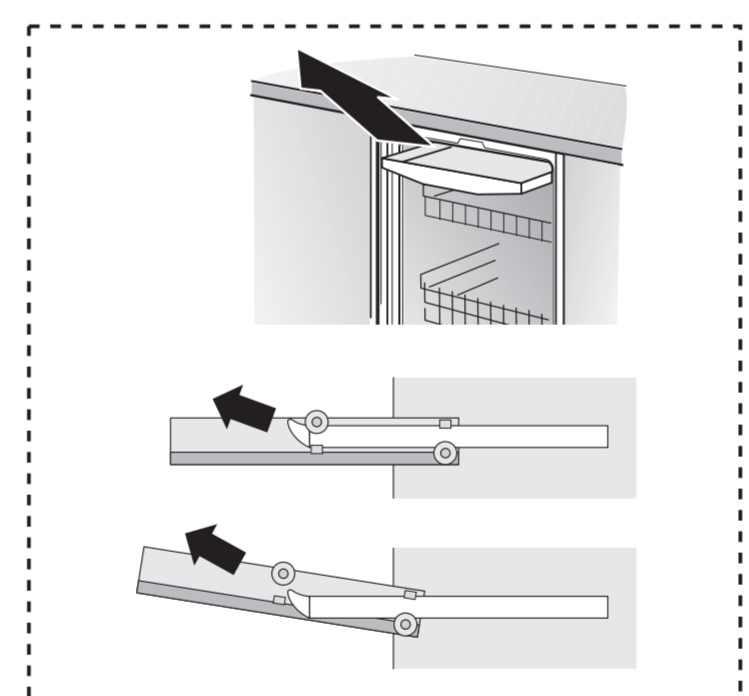
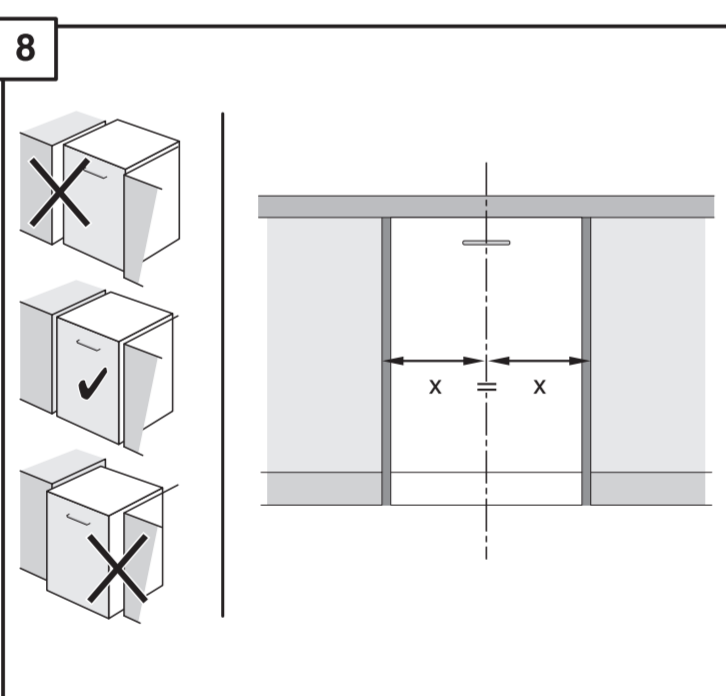
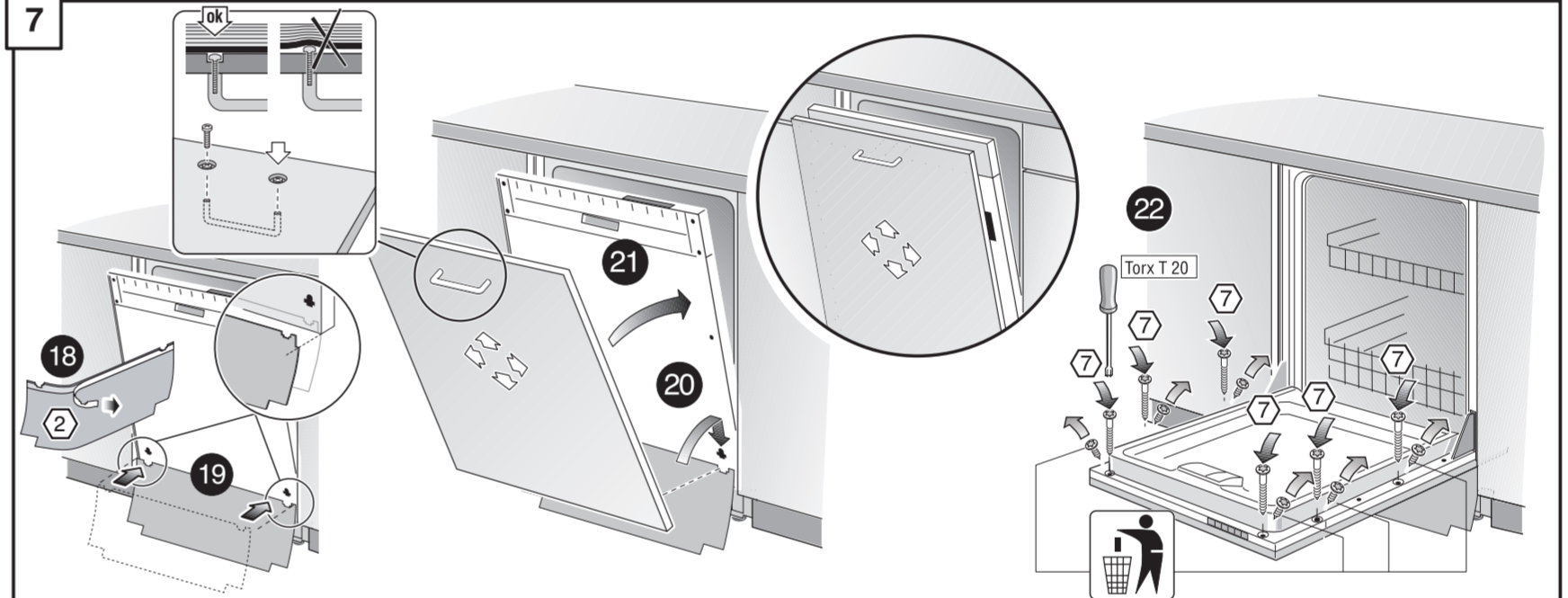
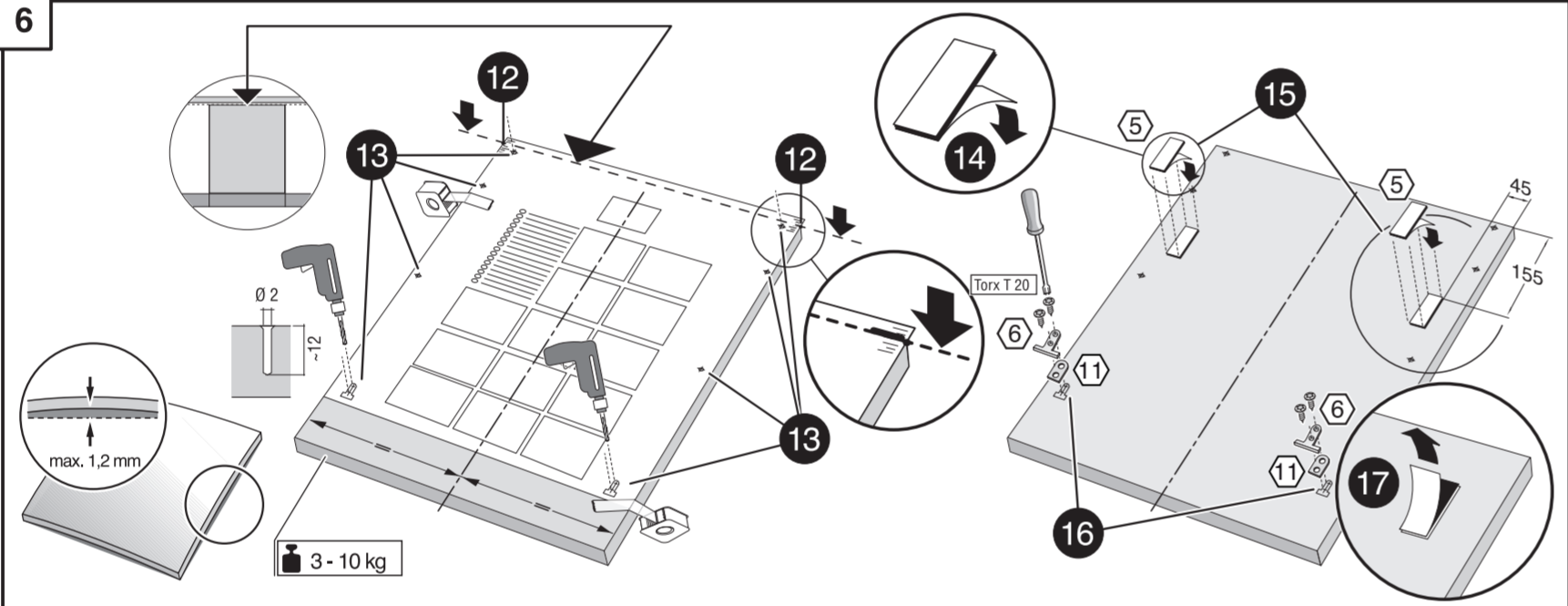
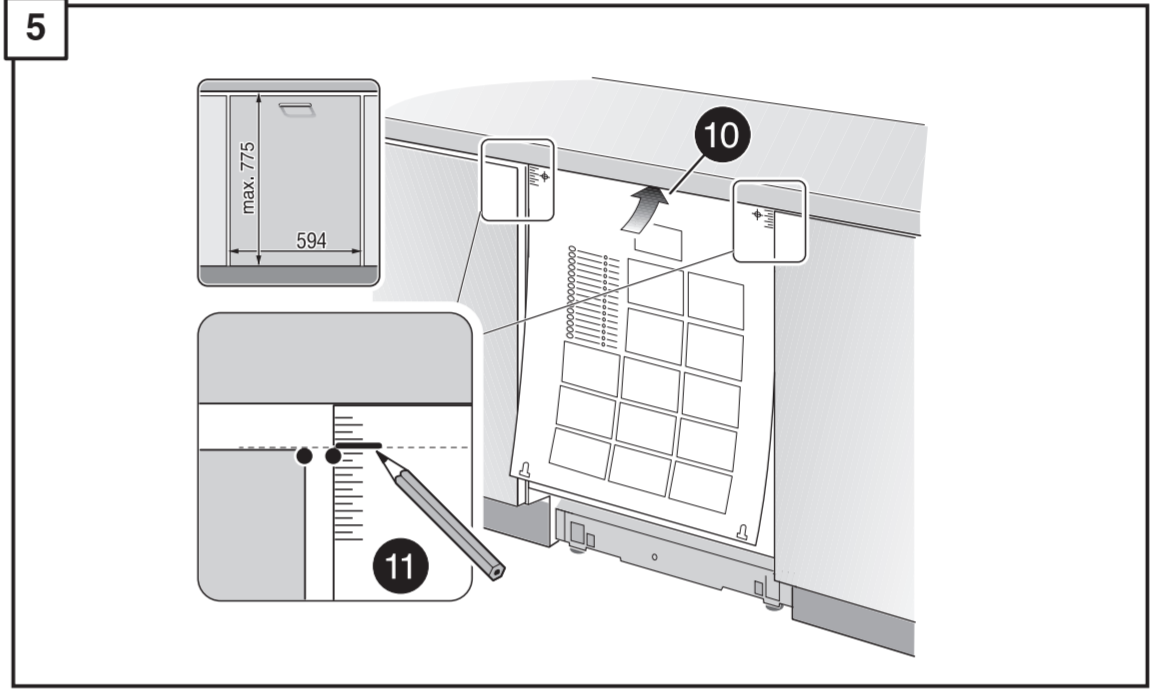
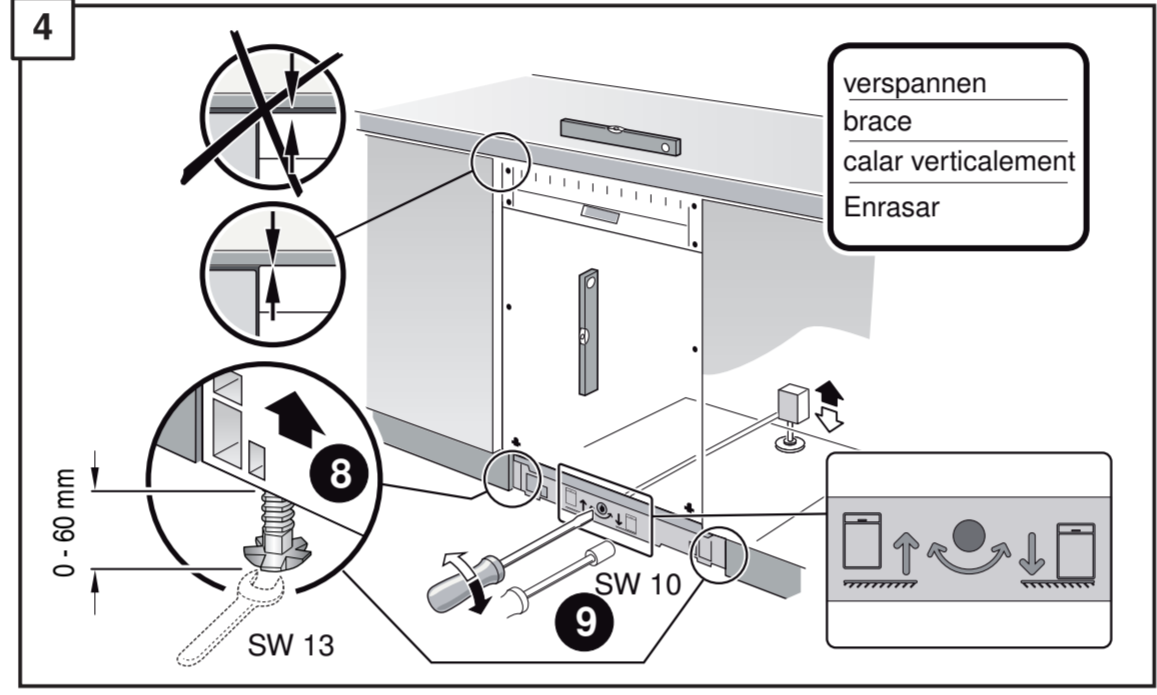
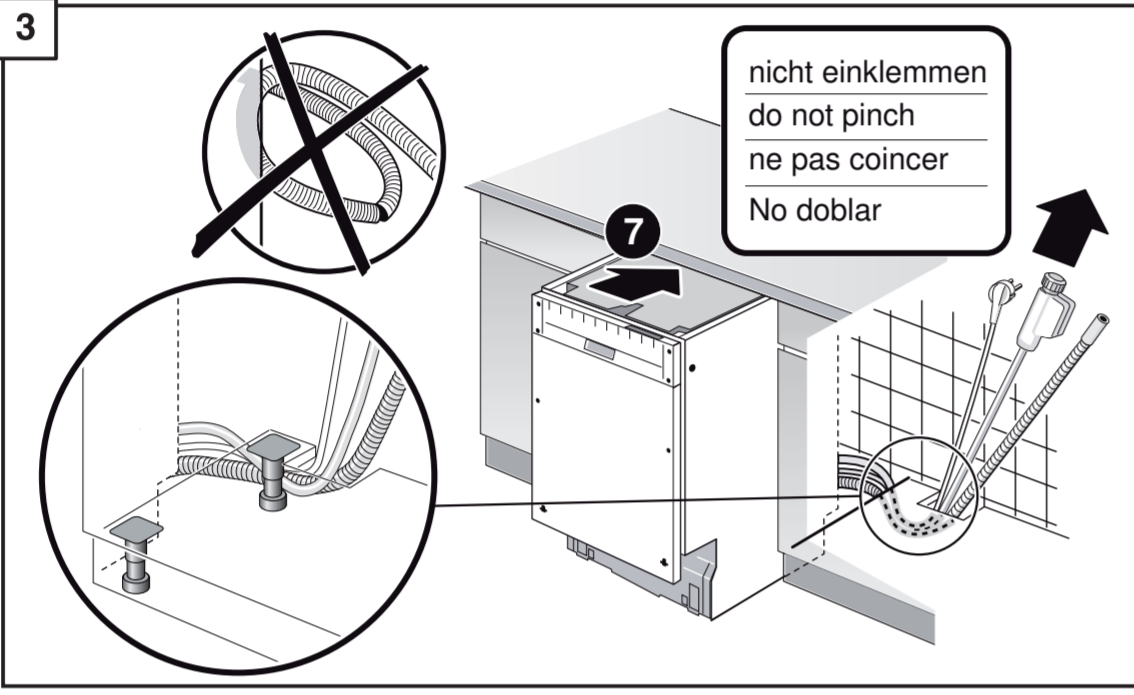
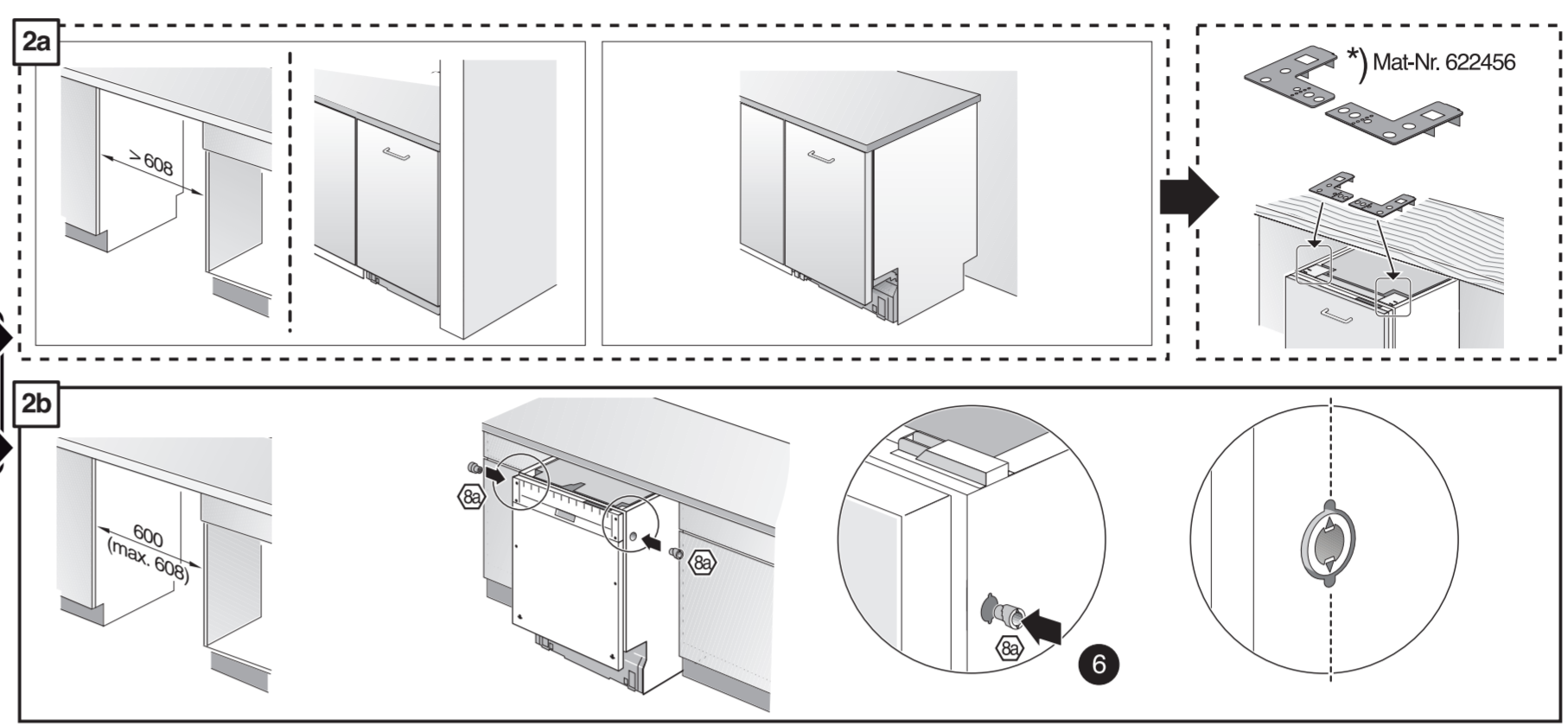
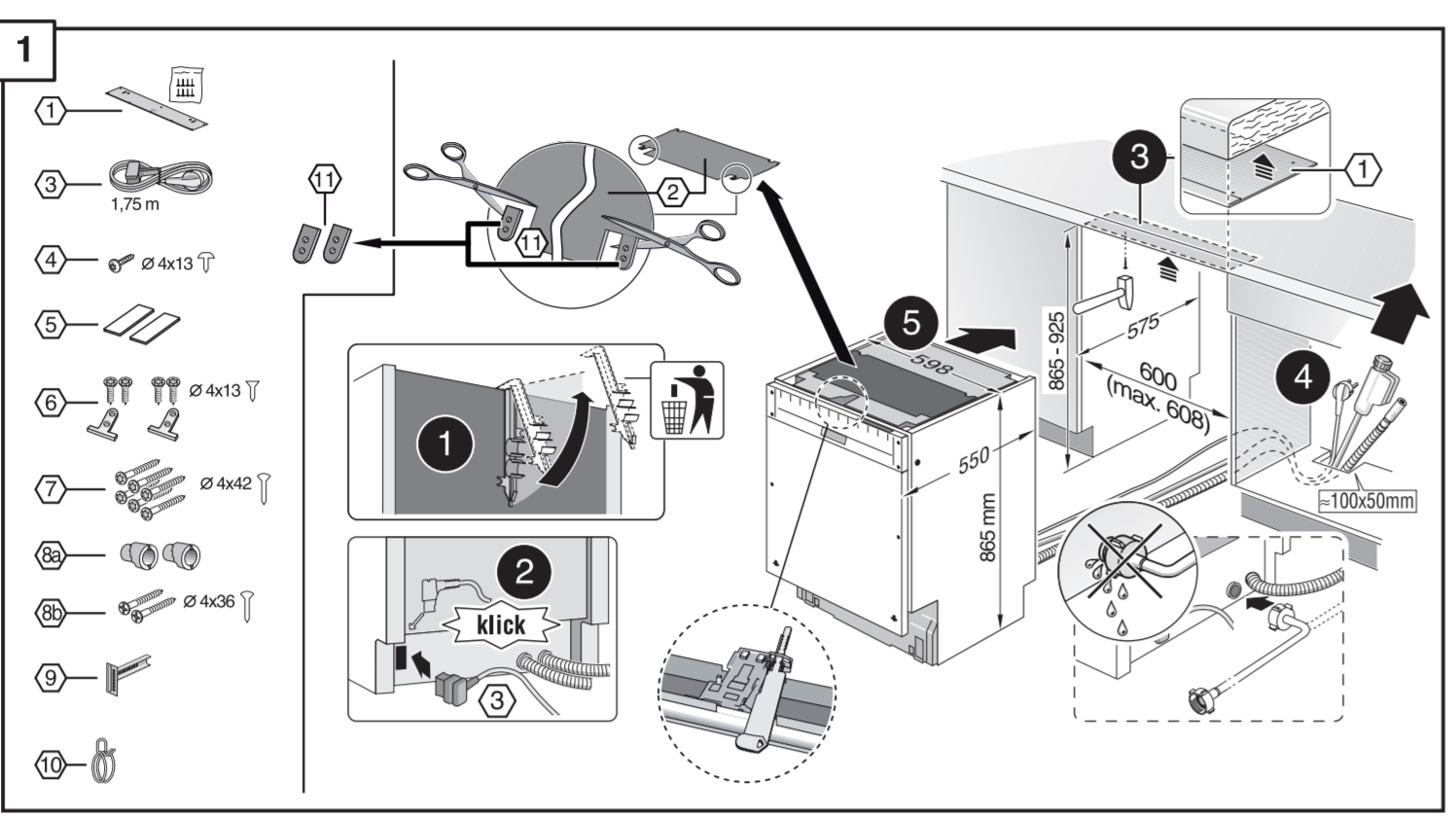
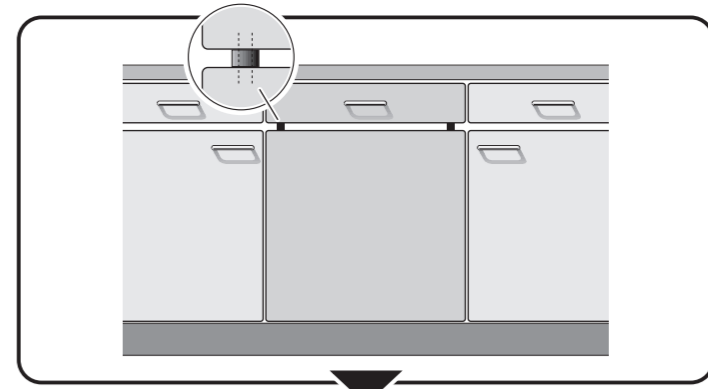
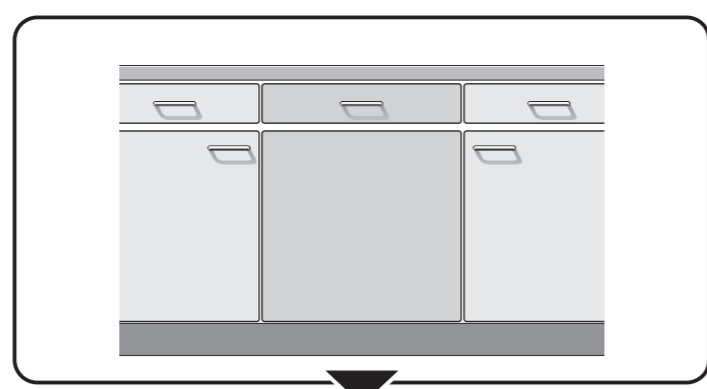
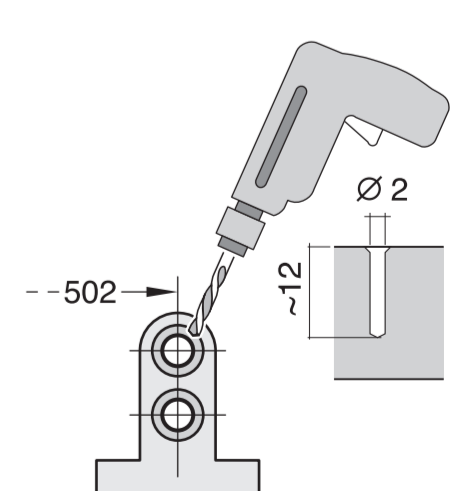
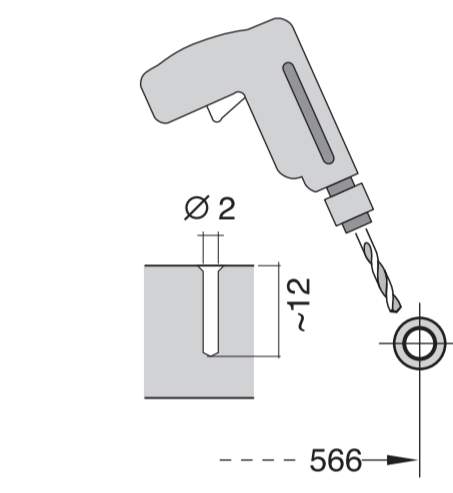
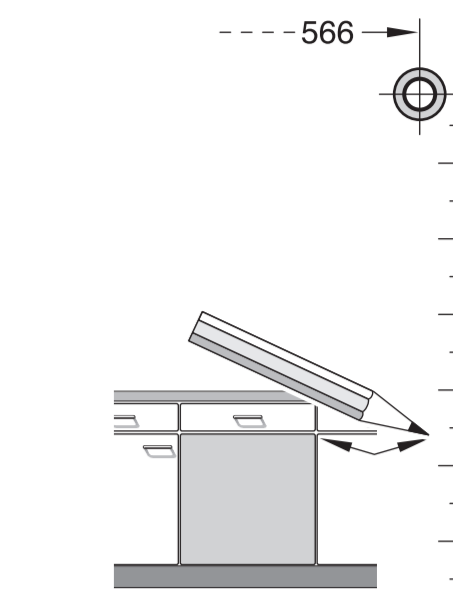
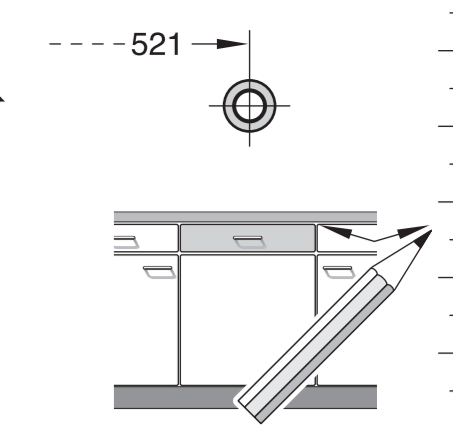
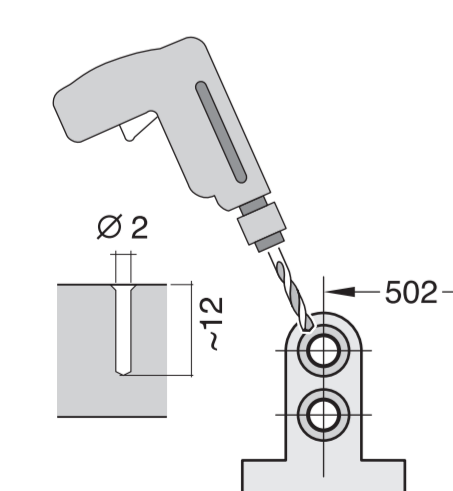
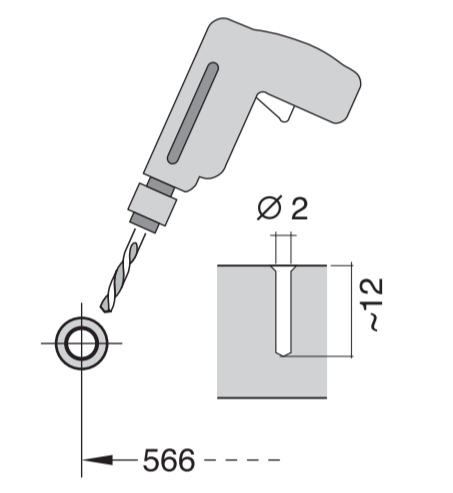
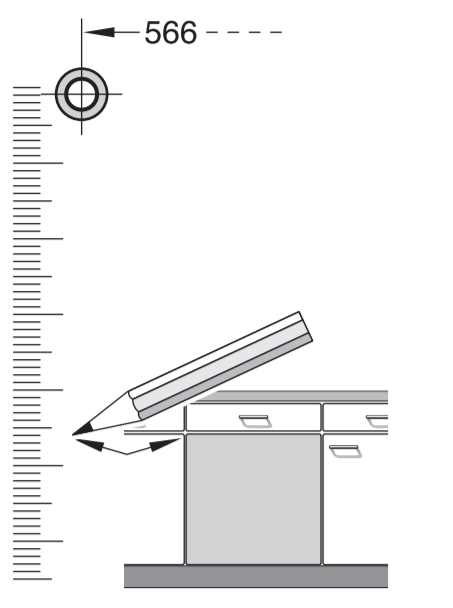
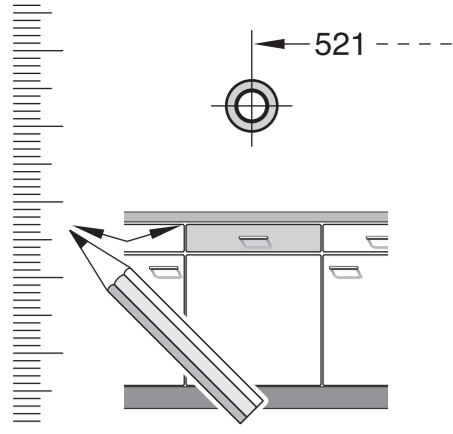




de Montageanleitung *) Über Kundendienst erhältlich	tr Montaj klavuzu *) Yetkili servis üzerinden alınabilir	mk Упатство за монтажа *) се добива преку службата за купувачи	fa راهنمای مونتاژ *) از مرکز خدمات پس از فروش تهیه فرمایید
en Installation instructions *) Available from customer service	ru Инструкция по монтажу *) Можно получить в сервисном центре	sl Navodilo za montažo *) Lahko nabavite v servisni službi	ar تعليمات التركيب *) يمكن طلبها من مراكز خدمة العملاء
fr Notice de montage *) Disponible par le biais du service après-vente	es Montážní návod *) K dispozici přes servisní službu	hr Uputstvo za montažu *) Može se nabaviti preko servisne službe	ko 설치 설명서 *) 고객센터 서비스 센터에서 구입 가능
nl Montagevoorschrift *) Tegen meerprijs bij de Servicedienst verkrijgbaar	no Monteringsanvisning *) faes hos kundeservice	et Monteerimisjuhend *) Kõige klientideinusest	zh 安装说明书 *) 可向售后服务站索取
it Istruzioni per il montaggio *) Disponibili presso il servizio assistenza clienti	fi Asennusohje *) Saatavissa huoltopalvelusta	lv Montāžas instrukcija *) Var saņemt servisa dienestā	uk Інструкція з монтажу *) Можна отримати через сервісну службу
el Οδηγίες τοποθέτησης *) διαθέσιμα από το υπηρεσία τεχνικής συντήρησης της μάρκας	da Monteringsvejledning *) Kan købes hos serviceafdelingen	lt Montāžas pamācība *) Var saņemt servisa dienestā	ro Instrucțiune de montaj *) obținabilă la serviciul pentru clienți
es Instrucciones de montaje *) Se puede adquirir a través del Servicio de Asistencia Técnica Oficial de la marca	pl Instrukcja montażu *) Do uzyskania w punkcie serwisowym	sk Návod na montáž *) Dostanete v službe zákazníkom	id Instruksi Pemasangan *) bisa didapatkan melalui Customer Service
pt Instruções de montagem *) Pode ser adquirido nos nossos Serviços Técnicos	hu Szerelési utasítás *) A végsőszálaton keresztül kapható:	ec Udhæuzes për montim *) Sigurohet nëpërmjet servisit	kk Іске қосу туралы нұсқаулар! *) Сервис қызмет жерінен орталығында алуға жатады
sv Monteringsanvisning *) kan fås via Service	hr Uputa za montažu *) može dobiti kod službe održavanja	bs Uputa za montažu *) Može se dobiti preko servisne službe	

GV 640 Voll-I - 86,5 cm - m. GS 9000 879 848 (9308)





1

- 1. 1.75 m
- 2. Ø 4x13
- 3. Ø 4x13
- 4. Ø 4x13
- 5. Ø 4x13
- 6. Ø 4x13
- 7. Ø 4x13
- 8. Ø 4x13
- 9. Ø 4x13
- 10. Ø 4x13
- 11. Ø 4x13
- 12. Ø 4x13
- 13. Ø 4x13
- 14. Ø 4x13
- 15. Ø 4x13
- 16. Ø 4x13
- 17. Ø 4x13
- 18. Ø 4x13
- 19. Ø 4x13
- 20. Ø 4x13
- 21. Ø 4x13
- 22. Ø 4x13
- 23. Ø 4x13
- 24. Ø 4x13
- 25. Ø 4x13
- 26. Ø 4x13
- 27. Ø 4x13
- 28. Ø 4x13
- 29. Ø 4x13
- 30. Ø 4x13
- 31. Ø 4x13
- 32. Ø 4x13

2a

Mat-Nr. 622456

2b

3

nicht einklemmen
do not pinch
ne pas coincier
No doblar

4

verspannen
brace
calar verticalement
Enrasar

0-60 mm

SW 13

5

6

Torx T 20

7

3-10kg

max. 12 mm

Torx T 20

8

9

9

max. 10 Nm

9

10

Mat-Nr. 612653

11

Scheibe entfernen
remove disc
enlever le disque
Eliminar disco

min. Ø 18 mm

max. 10 Nm

Dichttheit nach einem Spülgang prüfen.
Check for leaks after one wash cycle.
Vérifiez l'étanchéité après un lavage.
Verificar la estanqueidad tras un ciclo de lavado.

0.05 - 1 MPa
(0.5 - 10 bar)
max. 60°C

1
4
5A
6A
7A
8
11

max. 4 m

2 m

0.22 mm

2.2 m

Min.-Nr. 360564

Mat.-Nr. 657927

3 m

EU *

Mat.-Nr. 644533

3 m

GB *

Mat.-Nr. 644534