

Your washing machine

Congratulations – You have opted for a modern, high-quality domestic appliance manufactured by BOSCH. The washing machine is distinguished by its economical use of water and energy. Every appliance that leaves our factory has been inspected thoroughly to ensure that it functions properly and is in perfect condition.

For further information about products, accessories, spare parts and services, visit our website: www.bosch-home.com or contact our after-sales service centres.

Environmentally friendly waste disposal

All packaging must be disposed of in accordance with environmental guidelines. This appliance is certified in accordance with European Directive 2002/96/EEC on Waste Electrical and Electronic Equipment (WEEE). This directive provides the framework for the EU-wide collection and reuse of used appliances.

Observe the safety instructions on page 8. Read these instructions before switching on the washing machine. Also follow the separate installation instructions.

Contents

Intended use	1
Programmes	1
Preparation	2/3
Setting and adjusting programmes	3
Washing	3/4
Removing the laundry	4
Display information, Options, Functions	5/6
Programme overview	7
Safety instructions	8
Consumption values	8
Important information	9
Insert for liquid detergent	9
Care	10
Information on the display panel	10
Maintenance	11
What to do if	12
Emergency release	13
Customer service	13

Protection of the environment/Conservation tips

- Always fill the washing machine with a maximum amount of laundry for the relevant programme.
- Do not use prewash when washing laundry that is soiled normally.
- Instead of the **Cottons 90°C** programme, select **Cottons 60°C** with additional function **Eco Perfect**. Comparable cleaning result with significantly lower energy consumption.
- Dose detergent according to the manufacturer's instructions and water hardness.
- If the laundry is to be subsequently dried in a tumble dryer, select a spin speed as specified by the dryer manufacturer.

Intended use

- For domestic use only.
- For washing machine-washable fabrics in a detergent solution.
- To be operated with cold mains water and commercially available low foam detergents and care products which are suitable for use in washing machines.

- Do not leave children unattended near the washing machine.
- The washing machine is not to be used by children or persons not familiar with the operating instructions.
- Keep pets away from the washing machine.

Programmes

Detailed programme overview. →page 7
The temperature and spin speed can be selected individually, irrespective of the selected programme and programme progress.

Cottons	Hard-wearing textiles
Easy-Care	Synthetic fibres, easy-care textiles
Mix	Textiles made of cotton and synthetic fibres
Delicate/Silk	Silk and delicate washable textiles
Wool	Hand and machine-washable wool or wool-rich textiles
Spin	Additional spin cycle
Drum Clean	For drum hygiene or fluff removal
Drain	Draining of the water inside the drum
Rinse/Freshen up	Extra rinse with spin
Jeans/Dark Wash	Dark textiles
Sportswear	Sportswear made of microfibre
Shirts	Programme for Shirts/Blouses
Kidswear	Textiles for children
Allergy Plus	Programme for allergic people and advanced hygiene
Super 15/30'	Extra short programme

Preparation

Before washing for the first time, run a wash once without any laundry in the machine →page 9

Check the machine
– Never switch on a damaged machine.
– Inform your after-sales service.

Insert the mains plug
With dry hands only. Only hold the plug by the plug body.

Turn on the tap
To achieve the labeling consumption values, two cycles of **Cottons 90°C** programme without laundry are required to be run at initial setup.
Note: This operation only needs to be completed once.

Add detergent and care product
Amount of laundry, soiling, water hardness (ask your water supply company) and manufacturer's instructions. Models without insert for liquid detergent: pour liquid detergent into an appropriate dispenser and place in the drum. During operation: close the detergent drawer.

Setting and adjusting programmes
If the symbol lights up or flashes in the display panel, the childproof lock is active. →deactivate, page 6

Select Start/Reload
All buttons are sensitive and a gentle tap is adequate. If you press and hold the Option buttons, the setting options automatically scroll through.

Programme selector for switching the machine on and off and for selecting the programme. Can be rotated in either direction.

Compartment II: Detergent for the main wash, water softener, bleach, stain remover
Compartment I: Detergent for pre-wash
Compartment : Fabric softener, impregnating agent, starch

Additional functions, information
SpeedPerfect : EcoPerfect Extra Rinse
Prewash EcoPerfect EcoPerfect Extra Rinse
SpeedPerfect EcoPerfect EcoPerfect Extra Rinse
Wash the clothing inside out.

Additional functions See also Programme overview →page 7
SpeedPerfect For washing in a shorter time with a washing result comparable to that of the standard programme.
EcoPerfect For saving energy with a washing performance comparable to that of the standard programme.
Extra Rinse Additional rinse cycle. Prolonged programme duration. For areas with very soft water or for further improving the washing result.
Prewash Activate prewash. For heavily soiled, hard-wearing textiles, e.g. made of cotton or linen.
Start/Reload To start or pause the programme.
Signals

1. Start signal mode
Set to ●
1 step clockwise
Press and hold
+ 1 step clockwise
Release

2. Set volume for ...
Set volume* direct
1 step clockwise
Set volume*
Set to ●

3. Programme ended when ...
... **Start/Reload** goes out and - - or - - - - (if was selected, no final drain/spin) is indicated on the display panel, the buzzer sounds. Set the volume of the buzzer. →page 6

Changing the programme ...
If you have selected the wrong programme by mistake:
– Reselect the programme.
– Select **Start/Reload** .

Pausing the programme ...
– Touch the **Start/Reload** button.
– Follow the instructions in the display field: when lights up and appears in the display, the door can be opened. If required, add /remove a laundry item; if and are displayed alternately, the door cannot be opened due to a high water level in the drum or a high temperature.
– Touch **Start/Reload** button to continue the programme.

... or terminate the programme
Programmes with high temperature:
– Cool down laundry: Select **Rinse/Freshen up** .

Programmes at lower temperature:
– Select **Drain** or **Spin** .

– Select **Start/Reload** .

Washing

Removing laundry
– Open the washing machine door and remove the laundry.
If (Rinse stop = no final drain/spin) is active: Select the spin speed or set programme selector to **Drain** or **Spin** .

Turn off the tap
– Set the programme selector to ● **Off**.

Switch off
– Set the programme selector to ● **Off**.

Programme ended when ...
... **Start/Reload** goes out and - - or - - - - (if was selected, no final drain/spin) is indicated on the display panel, the buzzer sounds. Set the volume of the buzzer. →page 6

Changing the programme ...
If you have selected the wrong programme by mistake:
– Reselect the programme.
– Select **Start/Reload** .

Pausing the programme ...
– Touch the **Start/Reload** button.
– Follow the instructions in the display field: when lights up and appears in the display, the door can be opened. If required, add /remove a laundry item; if and are displayed alternately, the door cannot be opened due to a high water level in the drum or a high temperature.
– Touch **Start/Reload** button to continue the programme.

... or terminate the programme
Programmes with high temperature:
– Cool down laundry: Select **Rinse/Freshen up** .

Programmes at lower temperature:
– Select **Drain** or **Spin** .

– Select **Start/Reload** .

Display information, Options, Functions

Display symbols

Display information

Option buttons
You can change the spin speed and temperature beforehand and while the selected programme is running. The effects depend on the progress of the programme.
°C (Temp.)
When you select a programme, the respective programme duration is displayed. You can delay the start of the programme before it begins. The finish-in time indicates when the programme will be finished. It can be set in hourly increments up to a maximum of 24 hours. Press and hold the (Finish-in) button until the required number of hours is shown (h=hour). Select **Start/Reload** .

Spin speed
You can change the indicated spin speed. The maximum spin speed which can be selected depends on the selected programme. If is selected, the load is held in the rinsing water.

kg, e.g. 8.0 kg*: max. recommended load for selected programme →page 7, Programme overview
time, e.g. 1:30: remaining time
2:45: finish-in time defined by user →page 5
PR 15: pause
PR 15: door can be opened in "Pause" status
- - -: end of programme
- - -: end of programme with the setting
1:18: Information on the display →page 10

kg, e.g. 8.0 kg*: max. recommended load for selected programme →page 7, Programme overview
time, e.g. 1:30: remaining time
2:45: finish-in time defined by user →page 5
PR 15: pause
PR 15: door can be opened in "Pause" status
- - -: end of programme
- - -: end of programme with the setting
1:18: Information on the display →page 10

kg, e.g. 8.0 kg*: max. recommended load for selected programme →page 7, Programme overview
time, e.g. 1:30: remaining time
2:45: finish-in time defined by user →page 5
PR 15: pause
PR 15: door can be opened in "Pause" status
- - -: end of programme
- - -: end of programme with the setting
1:18: Information on the display →page 10

kg, e.g. 8.0 kg*: max. recommended load for selected programme →page 7, Programme overview
time, e.g. 1:30: remaining time
2:45: finish-in time defined by user →page 5
PR 15: pause
PR 15: door can be opened in "Pause" status
- - -: end of programme
- - -: end of programme with the setting
1:18: Information on the display →page 10

kg, e.g. 8.0 kg*: max. recommended load for selected programme →page 7, Programme overview
time, e.g. 1:30: remaining time
2:45: finish-in time defined by user →page 5
PR 15: pause
PR 15: door can be opened in "Pause" status
- - -: end of programme
- - -: end of programme with the setting
1:18: Information on the display →page 10

Washing

Drum
Control panel
Door handle
Service flap

Washing

Washing

Washing

Washing

Washing

Washing

Washing

Washing

Washing

Washing

Washing

Washing

Washing

Washing

Washing

Washing

Washing

Washing

Options, Functions

(Childproof lock) Programme cannot be changed by accidental operation.
To activate the childproof lock:
– After the programme starts, press and hold the button for 5 seconds;
– Release when the symbol lights up.
When the programme ends, the **Start/Reload** indicator remains on to remind you to deactivate the childproof lock.
* symbol flashes if the programme has been changed while childproof lock is activated.
To deactivate the childproof lock:
– Touch and hold the button until the symbol turns off;
– Release the button.

If the childproof lock is deactivated while the programme selector is in a different position from when the childproof lock was activated*, the current programme will be halted.

Additional functions See also Programme overview →page 7
SpeedPerfect For washing in a shorter time with a washing result comparable to that of the standard programme.
EcoPerfect For saving energy with a washing performance comparable to that of the standard programme.
Extra Rinse Additional rinse cycle. Prolonged programme duration. For areas with very soft water or for further improving the washing result.
Prewash Activate prewash. For heavily soiled, hard-wearing textiles, e.g. made of cotton or linen.
Start/Reload To start or pause the programme.
Signals

1. Start signal mode
Set to ●
1 step clockwise
Press and hold
+ 1 step clockwise
Release

2. Set volume for ...
Set volume* direct
1 step clockwise
Set volume*
Set to ●

3. Programme ended when ...
... **Start/Reload** goes out and - - or - - - - (if was selected, no final drain/spin) is indicated on the display panel, the buzzer sounds. Set the volume of the buzzer. →page 6

Changing the programme ...
If you have selected the wrong programme by mistake:
– Reselect the programme.
– Select **Start/Reload** .

Pausing the programme ...
– Touch the **Start/Reload** button.
– Follow the instructions in the display field: when lights up and appears in the display, the door can be opened. If required, add /remove a laundry item; if and are displayed alternately, the door cannot be opened due to a high water level in the drum or a high temperature.
– Touch **Start/Reload** button to continue the programme.

... or terminate the programme
Programmes with high temperature:
– Cool down laundry: Select **Rinse/Freshen up** .

Programmes at lower temperature:
– Select **Drain** or **Spin** .

– Select **Start/Reload** .

Display information, Options, Functions

Display symbols

Display information

Option buttons
You can change the spin speed and temperature beforehand and while the selected programme is running. The effects depend on the progress of the programme.
°C (Temp.)
When you select a programme, the respective programme duration is displayed. You can delay the start of the programme before it begins. The finish-in time indicates when the programme will be finished. It can be set in hourly increments up to a maximum of 24 hours. Press and hold the (Finish-in) button until the required number of hours is shown (h=hour). Select **Start/Reload** .

Spin speed
You can change the indicated spin speed. The maximum spin speed which can be selected depends on the selected programme. If is selected, the load is held in the rinsing water.

kg, e.g. 8.0 kg*: max. recommended load for selected programme →page 7, Programme overview
time, e.g. 1:30: remaining time
2:45: finish-in time defined by user →page 5
PR 15: pause
PR 15: door can be opened in "Pause" status
- - -: end of programme
- - -: end of programme with the setting
1:18: Information on the display →page 10

kg, e.g. 8.0 kg*: max. recommended load for selected programme →page 7, Programme overview
time, e.g. 1:30: remaining time
2:45: finish-in time defined by user →page 5
PR 15: pause
PR 15: door can be opened in "Pause" status
- - -: end of programme
- - -: end of programme with the setting
1:18: Information on the display →page 10

kg, e.g. 8.0 kg*: max. recommended load for selected programme →page 7, Programme overview
time, e.g. 1:30: remaining time
2:45: finish-in time defined by user →page 5
PR 15: pause
PR 15: door can be opened in "Pause" status
- - -: end of programme
- - -: end of programme with the setting
1:18: Information on the display →page 10

Programmes	°C	max. (kg)	Type of laundry
Cottons	90	8.0	Standard washing program for hard-wearing textiles, made of cotton or linen.
Allergy Plus	60	7.5	Programme specially designed for allergic people and advanced hygiene; suitable for hard-wearing textiles made of cotton or linen.
Kidswear	40	7.5	Programme suitable for washing kids' wear made of cotton or synthetic textiles.
Jeans/Dark Wash	60	3.5	Dark coloured textiles made of cotton or synthetics.
Mix	60	3.5	Textiles made of synthetic materials or blended fabrics.
Shirts	60	3.5	Mixed load consisting of textiles made of cotton and synthetic fibres.
Delicate/Silk	40	2.0	Suitable for Shirts/Blouses made of cotton, linen, synthetic fibres or blended fabrics.
Sportswear	40	2.0	For delicate, washable textiles, e.g. made of silk, satin, synthetic fibres or blended fabrics.
Wool	40	2.0	Suitable for sportswear made of microfibre e.g. Acrylic, Nylon, Spandex, etc.
Super 15/30'	40	2.0	Special programme for drum hygiene or fluff removal
Drum Clean	90	0	Especially gentle washing programme to prevent shrinkage, longer programme pauses (textiles rest in detergent solution)
Spin	40	0	e.g. cashmere, mohair or angora. Also suitable for hand washable silk.
Rinse/Freshen up	40	0	Extra short programme approx. 15-30 minutes, suitable for lightly soiled and small amounts of laundry.
Drain	40	0	Drain and machine-washable wool or wool-rich textiles.
Drain	40	0	Especially gentle washing programme to prevent shrinkage, longer programme pauses (textiles rest in detergent solution)
Drain	40	0	e.g. cashmere, mohair or angora. Also suitable for hand washable silk.
Drain	40	0	Extra short programme approx. 15-30 minutes, suitable for lightly soiled and small amounts of laundry.
Drain	40	0	Drain and machine-washable wool or wool-rich textiles.
Drain	40	0	Especially gentle washing programme to prevent shrinkage, longer programme pauses (textiles rest in detergent solution)
Drain	40	0	e.g. cashmere, mohair or angora. Also suitable for hand washable silk.
Drain	40	0	Extra short programme approx. 15-30 minutes, suitable for lightly soiled and small amounts of laundry.
Drain	40	0	Drain and machine-washable wool or wool-rich textiles.
Drain	40	0	Especially gentle washing programme to prevent shrinkage, longer programme pauses (textiles rest in detergent solution)
Drain	40	0	e.g. cashmere, mohair or angora. Also suitable for hand washable silk.
Drain	40	0	Extra short programme approx. 15-30 minutes, suitable for lightly soiled and small amounts of laundry.
Drain	40	0	Drain and machine-washable wool or wool-rich textiles.
Drain	40	0	Especially gentle washing programme to prevent shrinkage, longer programme pauses (textiles rest in detergent solution)
Drain	40	0	e.g. cashmere, mohair or angora. Also suitable for hand washable silk.
Drain	40	0	Extra short programme approx. 15-30 minutes, suitable for lightly soiled and small amounts of laundry.
Drain	40	0	Drain and machine-washable wool or wool-rich textiles.
Drain	40	0	Especially gentle washing programme to prevent shrinkage, longer programme pauses (textiles rest in detergent solution)
Drain	40	0	e.g. cashmere, mohair or angora. Also suitable for hand washable silk.
Drain	40	0	Extra short programme approx. 15-30 minutes, suitable for lightly soiled and small amounts of laundry.
Drain	40	0	Drain and machine-washable wool or wool-rich textiles.
Drain	40	0	Especially gentle washing programme to prevent shrinkage, longer programme pauses (textiles rest in detergent solution)
Drain	40	0	e.g. cashmere, mohair or angora. Also suitable for hand washable silk.
Drain	40	0	Extra short programme approx. 15-30 minutes, suitable for lightly soiled and small amounts of laundry.
Drain	40	0	Drain and machine-washable wool or wool-rich textiles.
Drain	40	0	Especially gentle washing programme to prevent shrinkage, longer programme pauses (textiles rest in detergent solution)
Drain	40	0	e.g. cashmere, mohair or angora. Also suitable for hand washable silk.
Drain	40	0	Extra short programme approx. 15-30 minutes, suitable for lightly soiled and small amounts of laundry.
Drain	40	0	

Safety instructions

- Read and follow the operating and installation instructions and all other information enclosed with the washing machine.
- Retain documents for subsequent use.
- Risk of electric shock**
 - Never pull out the mains plug by pulling on the power cord.
 - Never insert/pull out the mains plug with wet hands.
- Risk of death**
 - For worn-out appliances:
 - Pull out the mains plug.
 - Sever the power cord and discard together with the plug.
 - Destroy the lock on the washing machine door. This will prevent children from locking themselves in the appliance and endangering their lives.
- Risk of suffocation**
 - Keep packaging, plastic film and packaging parts out of the reach of children.
- Risk of poisoning**
 - Keep detergents and care products out of the reach of children.
- Risk of explosion**
 - Items of laundry that are pretreated with cleaning agents that contain solvents, e.g. stain remover/cleaning solvents, may lead to an explosion after being loaded into the washing machine. Rinse items of laundry thoroughly by hand beforehand.
- Risk of injury**
 - Washing machine door may become very hot.
 - Take care when draining hot detergent solution.
 - Do not climb onto the washing machine.
 - Do not lean on the washing machine door when it is open.
 - Do not touch the drum in case it is still spinning.
 - Be careful when opening the detergent drawer while the machine is in operation.

Important information

- Preparing/Protecting the laundry and the machine**
 - Empty any pockets.
 - Check for metal items (paperclips, etc.).
 - Wash delicates in a net/bag (tights, curtains, underwired bras).
 - Fasten zips, do up any buttons.
 - Brush sand out of pockets and collars.
 - Remove curtain fittings or put curtains in a laundry bag.
- Before washing for the first time**
 - Do not load any laundry into the machine. Turn on the tap. Add the following to compartment II:
 - approx. 1 litre water
 - detergent (dosage according to the manufacturer's instructions for light soiling and the appropriate degree of water hardness)
 - Set the programme selector to **Drum Clean** 40 °C and select **Start/Reload**. At the end of the programme, turn the programme selector to **Off**.
- Laundry with different levels of soiling**
 - Light: Wash new items separately. Do not prewash. If required, pre-treat stains. Select **Prewash** option.
 - Heavy: Load less laundry. If required, pre-treat stains. Select **Prewash** option.
- Soaking**
 - Load laundry of the same colour.
 - Pour soaking agent/detergent into compartment II according to the manufacturer's instructions. Set **Cottons** 30 °C programme and select **Start/Reload**. After approx. 10 minutes, select **Start/Reload**. After the required soaking time, reselect **Start/Reload** if the programme is to be continued or change the programme.
- Starching**
 - Laundry must not be treated with fabric softener.
 - Starching is possible in all washing programmes if liquid starch is used. Add starch to the fabric softener compartment in accordance with the manufacturer's instructions.
- Dyeing/bleaching**
 - Dye in small quantities only. Salt can corrode stainless steel.
 - Observe the dye manufacturer's instructions.
 - Do **not** bleach laundry in the washing machine.

Consumption values

Programme	Additional function	Load	Electricity consumption**	Water**	Programme duration**
Cottons 20 °C	—	7.5 kg	0.15 kWh	68 l	2:16 h
Cottons 30 °C	—	7.5 kg	0.37 kWh	68 l	2:26 h
Cottons 40 °C	—	7.5 kg	0.83 kWh	68 l	2:26 h
Cottons 60 °C*	Eco Perfect*	7.5 kg	0.76 kWh	54 l	4:12 h
Cottons 90 °C	—	7.5 kg	2.22 kWh	81 l	2:17 h
Easy-Care 40 °C	—	3.5 kg	0.45 kWh	59 l	1:03 h
Mix 40 °C	—	3.5 kg	0.46 kWh	52 l	1:03 h
Delicate/Silk	—	2.0 kg	0.01 kWh	29 l	0:39 h
Wool	—	2.0 kg	0.01 kWh	40 l	0:36 h

* Programme setting with maximum spin speed for testing in accordance with AS/NZS 2040.2 and AS/NZS 6400 with cold water (20 °C).

** The values deviate from the indicated values depending on water pressure, hardness, and inlet temperature, ambient temperature, type, amount and soiling of the laundry, detergent used, fluctuations in the power supply and selected additional functions.

Insert for liquid detergent

- Position the insert for dispensing liquid detergent:
 - Remove the detergent drawer completely → page 10.
 - Slide the insert forwards.
- Do not use the insert (slide upwards):
 - For gel-type detergents and washing powder,
 - For programmes with **Prewash** or **(Finish in)** option.

Care

- Machine housing, control panel**
 - Wipe with a soft, damp cloth.
 - Do not use any abrasive cloths, scourers or cleaning agents (stainless steel cleaners).
 - Immediately remove laundry and cleaning agent residues.
 - Do not clean the appliance with a water jet.
- Clean the detergent drawer ...**
 - ... if it contains detergent or fabric softener residues.
 - 1. Pull out the drawer up to the stop position, press down on the latch on the insert and remove the drawer completely.
 - 2. Remove insert: Pull the insert upwards using your finger.
 - 3. Clean the detergent dispenser and the insert with water and a brush.
 - 4. Refit the insert and secure it in place (the cylinder should fit over the guide pin).
 - 5. Insert the detergent drawer.
 - 6. Leave the detergent drawer open so that residual water can evaporate.
- Drum**
 - Leave the washing machine door open after washing so that the drum can dry.
 - Rust stains – use chlorine-free cleaning agent, not steel wool.
- Descaling**
 - Ensure that there is no laundry in the machine.
 - This is not necessary if the detergent is dispensed correctly. However, if it is necessary, follow the instructions provided by the descaler manufacturer. Suitable descaling products can be purchased from our website or customer service. →page 13

Information on the display

P:01	Please close the door immediately due to the rising water level. In the pause status, P:01 and P:02 are displayed alternately.
P:02	The door is locked for safety reasons (water level and/or temperature are too high); in the pause status, P:02 and P:03 are displayed alternately. If you need to open the door, wait for the temperature to drop or drain the water (e.g. select Drain programme).
P:03	The door cannot be locked/unlocked due to the high temperature of the door lock. Wait a moment and try again.
Flashing	Flashing (no water supply): Tap turned on? Inlet filter blocked? Clean the filter. →page 11 Supply hose kinked or blocked?
Flashing	Flashing: The washing machine detected the imbalance in the drum and it cannot be adjusted. To protect the washing machine, the maximum spin speed cannot be reached. The washing solution will not be removed completely after spinning. - Wash small and large items of laundry together. Clean the drain pump; →page 11 Outlet pipe/drainage hose blocked.
Other displays	Switch off the appliance, wait 5 seconds and switch it back on. If the display appears again, call the after-sales service →page 13

Maintenance

- Drain pump blocked**
 - Set programme selector to **Off**, pull out the mains plug.
 - 1. Open service flap.
 - 2. Take the drainage hose out of the holder.
 - 3. Remove sealing cap, allow detergent solution to flow out. Have a suitable container ready. Push up the closing cap and place the drain hose back in its holder.
 - 4. Carefully unscrew the pump cover (Caution! residual water). Clean the interior, pump cover thread and pump housing (fan impeller in the detergent-solution pump must rotate).
 - 5. Reinsert and screw on pump cover. Handle should be vertical.
 - 6. Close the service flap.
- Drainage hose on the siphon blocked**
 - To prevent unused detergent from flowing into the outlet during the next wash: Pour 1 litre of water into dispenser II and start the **Spin** or **Drain** programme.
 - 1. Loosen hose clip, carefully remove drainage hose (Caution! residual water).
 - 2. Clean drainage hose and siphon spigot.
 - 3. Re-attach drainage hose and secure connection point with hose clip.
- Filter blocked in water inlet hose**
 - Risk of electric shock!** Do not immerse Aqua-Stop safety device in water (contains electric valve).
 - Release water pressure in the supply hose:
 - Turn off the tap!
 - Select any programme (except **Rinse/Freshen up**, **Spin** or **Drain**).
 - Press **Start/Reload** button. Leave programme for approx. 40 seconds.
 - Set programme selector to **Off**. Pull out the mains plug. Clean the filter:
 - Disconnect the hose from the water tap. Clean filter with small brush.
 - and/or** for standard and Aqua-Secure models: remove hose from the rear of the appliance. Take out filter with pliers and clean.
 - 6. Connect the hose and check for leaks.

What to do if ...

- Water is leaking out.
 - Fit/refit the drainage hose correctly.
 - Tighten the screw connection of the supply hose.
- There is no water supply. Detergent is not dispensed.
 - Start/Reload** not selected?
 - Water tap not turned on?
 - Supply hose filter blocked? Clean the filter. →page 11
 - Supply hose kinked or trapped?
- Washing machine door cannot be opened.
 - Safety function active. Programme stopped? →page 4
 - (Rinse stop = no final drain/spin) selected? →page 6
 - Can be opened by emergency release only. →page 13
- Programme does not start.
 - Start/Reload** or **Finish-in time** selected?
 - Washing machine door closed?
- Detergent solution is not drained.
 - Clean the drain pump. →page 11
 - Clean the waste pipe and/or drainage hose.
- Water not visible in the drum.
 - Not a fault - water below the visible area.
- The spin result is not satisfactory.
 - Wash small and large items of laundry together.
 - Selected speed too low? →page 6
- The spin cycle performs several times.
 - This is not a fault – the unbalanced load detection system adjusts the imbalance.
- Compartment is not rinsed out completely.
 - Remove the insert. Clean the detergent drawer and insert. →page 10
- Odour forms in the washing machine.
 - Run the **Drum Clean 90 °C** programme without laundry.
 - Use standard detergent.
- Foam escapes from the detergent drawer.
 - Too much detergent used? Mix 1 tablespoon of fabric softener with ½ litre of water and pour this mixture into compartment II in the detergent drawer.
 - Reduce detergent dosage for the next wash cycle.
- Excessive noise, vibrations and "wandering" during the spin cycle.
 - Are the appliance's feet fixed? Secure the appliance's feet. →Installation instructions, page 5
 - Have the transport bolts been removed? Remove the transport bolts. Installation instructions, page 3
- Display panel/indicator lamps do not light up while the appliance is running.
 - Power failure/off? The interrupted programme will resume once the power returns.
 - Circuit breaker tripped? Reset the circuit breaker/change the fuse.
 - If the fault occurs repeatedly, call after-sales service.
- The programme sequence is longer than usual.
 - This is not a fault – the unbalanced load detection system adjusts any imbalance by repeatedly distributing the laundry.
 - Not a fault – the foam detection system is active; it adds an additional rinse cycle.
- There are detergent residues on the laundry.
 - Occasionally, phosphate-free detergents contain water-insoluble residues.
 - Select **Rinse/Freshen up** or brush the laundry after washing.
- If you cannot correct a fault yourself or a repair is required:
 - Turn the programme selector to **Off** and pull the mains plug out of the socket.
 - Turn off the tap and call customer service. →page 13

Emergency release

- The interrupted programme will resume once the power returns. However, if the laundry has to be removed, the washing machine door can be opened as follows:
 - Risk of scalding. The detergent solution and laundry may be hot. If possible, leave it to cool down. Do not reach into the drum if it is still rotating. Do not open the washing machine door if water can be seen through the glass.
 - Set the programme selector to **Off** and disconnect the mains plug.
 - Drain the detergent solution. →page 11
 - Pull the emergency release with a tool and release it. The washing machine door can then be opened.

Customer service

- If you cannot rectify the fault yourself →page 12: What to do if ..., please contact our customer service. We will always find a suitable solution and will avoid a visit from a service technician wherever possible.
- The contact details for all countries can be found in the enclosed customer service directory.
- Please provide the after-sales service team with the product number (E-Nr.) and the production number (FD) for the appliance.
 - You will find the identification plate containing this information on the frame of the open door, and on the rating plate on the back of the appliance.

Rely on the professionalism of the manufacturer. Please contact us. This will ensure that the repair is carried out by trained service technicians who arrive equipped with genuine spare parts for your appliance.

en Instruction manual



Your washing machine

Congratulations – You have opted for a modern, high-quality domestic appliance manufactured by BOSCH. The washing machine is distinguished by its economical use of water and energy. Every appliance that leaves our factory has been inspected thoroughly to ensure that it functions properly and is in perfect condition.

For further information about products, accessories, spare parts and services, visit our website: www.bosch-home.com or contact our after-sales service centres.

Environmentally friendly waste disposal

All packaging must be disposed of in accordance with environmental guidelines. This appliance is certified in accordance with European Directive 2002/96/EEC on Waste Electrical and Electronic Equipment (WEEE).

This directive provides the framework for the EU-wide collection and reuse of used appliances.



Observe the safety instructions on page 8.



Read these instructions before switching on the washing machine. Also follow the separate installation instructions.

Contents

	Page
Intended use	1
Programmes	1
Preparation	2/3
Setting and adjusting programmes	3
Washing	3/4
Removing the laundry	4
Display information, Options, Functions	5/6
Programme overview.....	7
Safety instructions.....	8
Consumption values.....	8
Important information	9
Insert for liquid detergent.....	9
Care	10
Information on the display panel.....	10
Maintenance	11
What to do if	12
Emergency release.....	13
Customer service	13



Protection of the environment/Conservation tips

- Always fill the washing machine with a maximum amount of laundry for the relevant programme.
- Do not use prewash when washing laundry that is soiled normally.
- Instead of the **Cottons 90 °C** programme, select **Cottons 60 °C** with additional function **Eco Perfect**. Comparable cleaning result with significantly lower energy consumption.
- Dose detergent according to the manufacturer's instructions and water hardness.
- If the laundry is to be subsequently dried in a tumble dryer, select a spin speed as specified by the dryer manufacturer.

Intended use

- For domestic use only.
- For washing machine-washable fabrics in a detergent solution.
- To be operated with cold mains water and commercially available low foam detergents and care products which are suitable for use in washing machines.



- Do not leave children unattended near the washing machine.
- The washing machine is not to be used by children or persons not familiar with the operating instructions.
- Keep pets away from the washing machine.

Programmes

Detailed programme overview. →page 7
The temperature and spin speed can be selected individually, irrespective of the selected programme and programme progress.

Cottons	Hard-wearing textiles
Easy-Care	Synthetic fibres, easy-care textiles
Mix	Textiles made of cotton and synthetic fibres
Delicate/Silk	Silk and delicate washable textiles
Wool	Hand and machine-washable wool or wool-rich textiles
Spin	Additional spin cycle
Drum Clean	For drum hygiene or fluff removal
Drain	Draining of the water inside the drum
Rinse/Freshen up	Extra rinse with spin
Jeans/Dark Wash	Dark textiles
Sportswear	Sportswear made of microfibre
Shirts	Programme for Shirts/Blouses
Kidswear	Textiles for children
Allergy Plus	Programme for allergic people and advanced hygiene
Super 15'/30'	Extra short programme

Preparation



Correct installation according to separate installation instructions.



Check the machine

- Never switch on a damaged machine.
- Inform your after-sales service.



Insert the mains plug



With dry hands only. Only hold the plug by the plug body.



Turn on the tap



To achieve the labeling consumption values, two cycles of **Cottons 90 °C** programme without laundry are required to be run at initial setup.

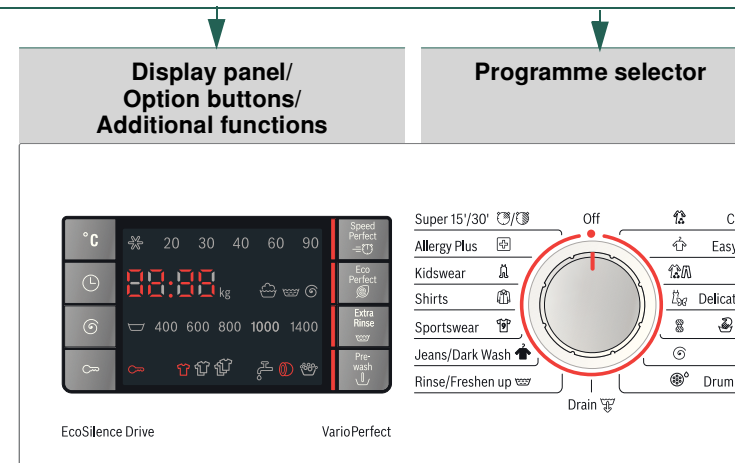
Note: This operation only needs to be completed once.

Insert for liquid detergent (depending on model), →page 9

Compartment II: Detergent for the main wash, water softener, bleach, stain remover

Compartment : Fabric softener, impregnating agent, starch

Compartment I: Detergent for pre-wash



Programme selector for switching the machine on and off and for selecting the programme. Can be rotated in either direction.

Before washing for the first time,
run a wash once without any laundry in the machine →page 9

Sorting and loading the laundry

Observe the care information provided by the manufacturer. Sort the laundry according to the information on the care labels. Sort the laundry according to type, colour, degree of soiling and temperature.

Remove any foreign objects as there is a risk of rusting. Do not exceed the maximum load. →page 7

Observe the instructions in the Important information section. →page 9
Load both large and small items of laundry.
Close the washing machine door. Take care not to trap any items of clothing between the loading door and rubber seal.

Add detergent and care product

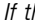
Add the appropriate amount according to:
Amount of laundry, soiling, water hardness (ask your water supply company) and manufacturer's instructions.

Models without insert for liquid detergent: pour liquid detergent into an appropriate dispenser and place in the drum.
During operation: close the detergent drawer.

i Dilute viscous fabric softener and fabric conditioner with water. This prevents blockages.

Setting and adjusting programmes

Start/
Reload

i If the  symbol lights up or flashes in the display panel, the childproof lock is active. →deactivate, page 6

For additional functions and option buttons, see the Individual settings section. →page 5/6


Select Start/Reload

i All buttons are sensitive and a gentle tap is adequate. If you press and hold the Option buttons, the setting options automatically scroll through.

Buttons:
Start/Reload
Care
Mix
/Silk
Wool
Spin
Clean

Avantixx

Washing

Detergent drawer with compartments I, II, 

Drum

Control panel

Door handle



Service flap

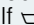
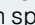

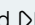
1

2

3

Washing

Removing laundry


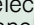
- Open the washing machine door and remove the laundry.
- If  (Rinse stop = no final drain/spin) is active: Select the spin speed or set programme selector to **Drain**  or **Spin** .
- Select **Start/Reload** .
- Remove any foreign objects as there is a risk of rusting.

Turn off the tap

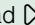
Switch off

- Set the programme selector to **Off**.


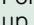

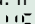
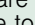

Programme ended when ...

... **Start/Reload** goes out and -  - or - - - - (if  was selected, no final drain/spin) is indicated on the display panel, the buzzer sounds. Set the volume of the buzzer. →page 6


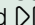
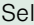
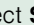
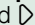
Changing the programme ...

- If you have selected the wrong programme by mistake: Reselect the programme.
- Select **Start/Reload** .

Pausing the programme ...

- Touch the **Start/Reload**  button.
- Follow the instructions in the display field: when  lights up and  appears in the display, the door can be opened. If required, add /remove a laundry item; if  and  are displayed alternately, the door cannot be opened due to a high water level in the drum or a high temperature.
- Touch **Start/Reload**  button to continue the programme.

... or terminate the programme

- Programmes with high temperature:
- Cool down laundry: Select **Rinse/Freshen up** .
 - Select **Start/Reload** .
- Programmes at lower temperature:
- Select **Drain**  or **Spin** .
 - Select **Start/Reload** .

Display information, Options, Functions

Display symbols



	Wash: On if wash process is running.
	Rinse: On if rinse process is running.
	Spin: On if spin process is active; if the symbol flashes → page 10
	Water tap: Flashing if tap not open or no water supply.
	Door: On if door can be opened.
	Overdosage: On if too much detergent used.
	Automatic load detection: Automatically detects the load size after the water inlet phase and sets the accurate remaining time. Symbols indicate small, medium and full loads measured* according to the recommended max. load for the selected programme. * Automatic display of the detected load only for washing programmes with a max. load recommendation > 3.0 kg except for Rinse, Spin and Drain. Different types of textiles with different water absorption rates may influence the load display.

Display information



kg, e.g. 3.0 kg*	max. recommended load for selected programme →page 7, Programme overview
time, e.g. 1:30*	remaining time 24:45*: finish-in time defined by user →page 5
PAUSE	pause
OPEN	door can be opened in "Pause" status
-	end of programme
- - -	end of programme with the setting
	set volume of signals →page 6
E: 1:3	Information on the display →page 10

Before starting a programme, the max. load for the selected programme is displayed when the door is open. The remaining time or finish-in time is displayed when the door is closed.

*Display shown may vary depending on the model and selected programme.

Option buttons

You can change the spin speed and temperature beforehand and while the selected programme is running. The effects depend on the progress of the programme.

°C (Temp.)

You can change the indicated washing temperature. The maximum washing temperature that can be selected depends on the programme that has been selected.

(Finish in)

When you select a programme, the respective programme duration is displayed. You can delay the start of the programme before it begins. The finish-in time indicates when the programme will be finished. It can be set in hourly increments up to a maximum of 24 hours. Press and hold the (**Finish-in**) button until the required number of hours is shown (h=hour). Select **Start/Reload** .

(Spin speed)

You can change the indicated spin speed. The maximum spin speed which can be selected depends on the selected programme. If is selected, the load is held in the rinsing water.

Options, Functions

(**Childproof lock**) Programme cannot be changed by accidental operation.

To activate the childproof lock:

- After the programme starts, press and hold the button for 5 seconds;
- Release when the symbol lights up.

When the programme ends, the **Start/Reload** indicator remains on to remind you to deactivate the childproof lock.

* symbol flashes if the programme has been changed while childproof lock is activated.

To deactivate the childproof lock:

- Touch and hold the button until the symbol turns off;
- Release the button.

If the childproof lock is deactivated while the programme selector is in a different position from when the childproof lock was activated*, the current programme will be halted.

Additional functions

See also *Programme overview* →page 7

SpeedPerfect

For washing in a shorter time with a washing result comparable to that of the standard programme.

EcoPerfect

For saving energy with a washing performance comparable to that of the standard programme.

Extra Rinse

Additional rinse cycle. Prolonged programme duration. For areas with very soft water or for further improving the washing result.

Prewash

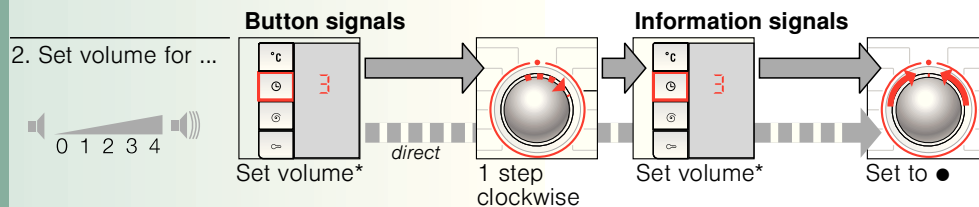
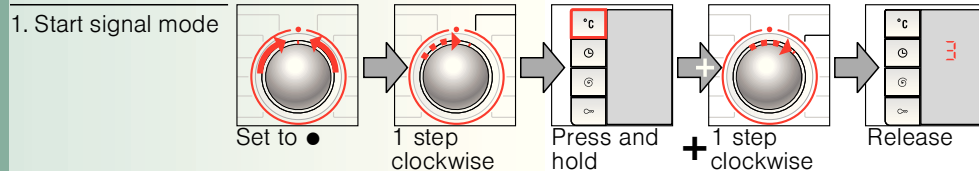
Activate prewash. For heavily soiled, hard-wearing textiles, e.g. made of cotton or linen.

The additional function indicator light is on when this option is selected; if this option cannot be selected for the programme, this is indicated by a short flashing of the light and an acoustic signal.

Start/Reload

To start or pause the programme.

Signals



*If required, set repeatedly

Programme overview

(see also the information on page 5, 6)



Programmes °C max. (kg) Type of laundry

Additional functions; information

Programmes	°C	max. (kg)	Type of laundry	Additional functions; information
Cottons	✳ -90	7.5/5.0 *	Standard washing program for hard-wearing textiles made of cotton or linen.	SpeedPerfect *, EcoPerfect , Prewash
Allergy Plus	✳ -60	7.5/5.0 *	Programme specially designed for allergic people and advanced hygiene, suitable for hard-wearing textiles made of cotton or linen.	SpeedPerfect *, EcoPerfect , Prewash
Kidswear	✳ -40	7.5/5.0 *	Programme suitable for washing kids wear made of cotton or synthetic textiles.	SpeedPerfect , EcoPerfect , Prewash Wash the clothing inside out.
Jeans/Dark Wash			Dark coloured textiles made of cotton or synthetics.	
Easy-Care	✳ -60	3.5	Textiles made of synthetic materials or blended fabrics.	SpeedPerfect , EcoPerfect , Prewash
Mix			Mixed load consisting of textiles made of cotton and synthetic fibres.	
Shirts	✳ -60		Suitable for Shirts/Blouses made of cotton, linen, synthetic fibres or blended fabrics.	
Delicate/Silk			For delicate, washable textiles, e.g. made of silk, satin, synthetic fibres or blended fabrics.	SpeedPerfect , EcoPerfect , Prewash
Sportswear	✳ -40	2.0	Suitable for sportswear made of microfibre e.g. Acrylic, Nylon, Spandex, etc. Hand and machine-washable wool or wool-rich textiles. Especially gentle washing programme to prevent shrinkage, longer programme pauses (textiles rest in detergent solution) e.g. cashmere, mohair or angora. Also suited for hand washable silk.	
Wool				
Super 15/30'	✳ -40	2.0/ 3.5 *	Extra short programme approx. 15-30 minutes, suitable for lightly soiled and small amounts of laundry.	SpeedPerfect *, EcoPerfect , Prewash
Drum Clean	✳, 40, 90	0	Special programme for drum hygiene or fluff removal 90° = antibacterial programme, use no detergent 40° = antibacterial programme, special drum cleaning detergent can be used ✳ = no antibacterial programme, to remove hair or fluff from the tub.	
Spin			Extra spin with selectable spin speed.	SpeedPerfect
Rinse/Freshen up		7.5	Extra rinse with spin.	Extra Rinse
Drain			Draining of the water inside the drum, e.g. after rinse stop.	

i The programmes are time-controlled for lightly soiled textiles. If textiles are heavily soiled, reduce the load and select additional function, e.g. Prewash.

* Programmes without prewash - pour detergent into compartment II; Programmes with prewash - divide detergent between compartments I and II.

Reduced load for SpeedPerfect option.

For further information and a selection of our products, go to our website: <http://www.bosch-home.com> or contact our after-sales service centres

Robert Bosch Hausgeräte GmbH
Carl-Wery-Str. 34
D-81739 Munich/Germany

WAS28461 AU 9000857016
9302



Safety instructions

– Read and follow the operating and installation instructions and all other information enclosed with the washing machine.

– Retain documents for subsequent use.

Risk of electric shock – Never pull out the mains plug by pulling on the power cord.
– Never insert/pull out the mains plug with wet hands.

Risk of death For worn-out appliances:
– Pull out the mains plug.
– Sever the power cord and discard together with the plug.
– Destroy the lock on the washing machine door.
This will prevent children from locking themselves in the appliance and endangering their lives.

Risk of suffocation – Keep packaging, plastic film and packaging parts out of the reach of children.

Risk of poisoning – Keep detergents and care products out of the reach of children.

Risk of explosion – Items of laundry that are pretreated with cleaning agents that contain solvents, e.g. stain remover/cleaning solvents, may lead to an explosion after being loaded into the washing machine.
Rinse items of laundry thoroughly by hand beforehand.

Risk of injury – Washing machine door may become very hot.
– Take care when draining hot detergent solution.
– Do not climb onto the washing machine.
– Do not lean on the washing machine door when it is open.
– Do not touch the drum in case it is still spinning.
– Be careful when opening the detergent drawer while the machine is in operation.

Consumption values

Programme	Additional function	Load	Electricity consumption**	Water**	Programme duration**
Cottons 20 °C	—	7.5 kg	0.15 kWh	68 l	2:16 h
Cottons 30 °C	—	7.5 kg	0.37 kWh	68 l	2:26 h
Cottons 40 °C	—	7.5 kg	0.83 kWh	68 l	2:26 h
Cottons 60 °C*	Eco Perfect*	7.5 kg	0.76 kWh	54 l	4:12 h
Cottons 90 °C	—	7.5 kg	2.22 kWh	81 l	2:17 h
Easy-Care 40 °C	—	3.5 kg	0.45 kWh	59 l	1:03 h
Mix 40 °C	—	3.5 kg	0.46 kWh	52 l	1:03 h
Delicate/Silk	—	2.0 kg	0.01 kWh	29 l	0:39 h
Wool	—	2.0 kg	0.01 kWh	40 l	0:36 h

* Programme setting with maximum spin speed for testing in accordance with AS/NZS 2040.2 and AS/NZS 6400 with cold water (20 °C).

** The values deviate from the indicated values depending on water pressure, hardness, and inlet temperature, ambient temperature, type, amount and soiling of the laundry, detergent used, fluctuations in the power supply and selected additional functions.



Important information



Preparing/Protecting the laundry and the machine

- Empty any pockets.
- Check for metal items (paperclips, etc.).
- Wash delicates in a net/bag (tights, curtains, underwired bras).
- Fasten zips, do up any buttons.
- Brush sand out of pockets and collars.
- Remove curtain fittings or put curtains in a laundry bag.



Before washing for the first time

Do not load any laundry into the machine. Turn on the tap. Add the following to compartment II:

- approx. 1 litre water
- detergent (dosage according to the manufacturer's instructions for light soiling and the appropriate degree of water hardness)

Set the programme selector to **Drum Clean** 40 °C and select **Start/Reload** . At the end of the programme, turn the programme selector to **Off**.



Laundry with different levels of soiling

Light		Wash new items separately. Do not prewash.
Heavy		If required, pre-treat stains. Select Prewash option. Load less laundry. If required, pre-treat stains. Select Prewash option.



Soaking

Load laundry of the same colour.

Pour soaking agent/detergent into compartment II according to the manufacturer's instructions. Set **Cottons** 30 °C programme and select **Start/Reload** . After approx. 10 minutes, select **Start/Reload** . After the required soaking time, reselect **Start/Reload** if the programme is to be continued or change the programme.



Starching

Laundry must not be treated with fabric softener.

Starching is possible in all washing programmes if liquid starch is used. Add starch to the fabric softener compartment in accordance with the manufacturer's instructions.



Dyeing/bleaching

Dye in small quantities only. Salt can corrode stainless steel. Observe the dye manufacturer's instructions. Do **not** bleach laundry in the washing machine.

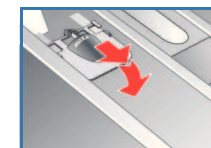
Insert for liquid detergent model-dependent

Position the insert for dispensing liquid detergent:

- Remove the detergent drawer completely → page 10.
- Slide the insert forwards.

Do not use the insert (slide upwards):

- For gel-type detergents and washing powder,
- For programmes with **Prewash** or (**Finish in**) option.



Care



- Risk of electric shock. Pull out the mains plug.
- Risk of explosion. No solvents.



Machine housing, control panel

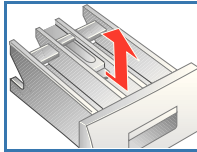
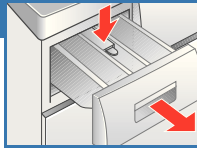
- Wipe with a soft, damp cloth.
- Do not use any abrasive cloths, scourers or cleaning agents (stainless steel cleaners).
- Immediately remove laundry and cleaning agent residues.
- Do not clean the appliance with a water jet.



Clean the detergent drawer ...

... if it contains detergent or fabric softener residues.

1. Pull out the drawer up to the stop position, press down on the latch on the insert and remove the drawer completely.
2. Remove insert: Pull the insert upwards using your finger.
3. Clean the detergent dispenser and the insert with water and a brush.
4. Refit the insert and secure it in place (the cylinder should fit over the guide pin).
5. Insert the detergent drawer.
6. Leave the detergent drawer open so that residual water can evaporate.



Drum

Leave the washing machine door open after washing so that the drum can dry. Rust stains – use chlorine-free cleaning agent, not steel wool.



Descaling *Ensure that there is no laundry in the machine.*

This is not necessary if the detergent is dispensed correctly. However, if it is necessary, follow the instructions provided by the descaler manufacturer. Suitable descaling products can be purchased from our website or customer service. →page 13

Information on the display

	Please close the door immediately due to the rising water level. In the pause status, A:01 and 0 P E N are displayed alternately.
	The door is locked for safety reasons (water level and/or temperature are too high); in the pause status, A:02 and P R L O C K are displayed alternately. If you need to open the door, wait for the temperature to drop or drain the water (e.g. select Drain programme).
	The door cannot be locked/unlocked due to the high temperature of the door lock. Wait a moment and try again.
	Flashing (no water supply): Tap turned on? Inlet filter blocked? Clean the filter. →page 11 Supply hose kinked or blocked?
	Flashing: The washing machine detected the imbalance in the drum and it cannot be adjusted. To protect the washing machine, the maximum spin speed cannot be reached. The washing solution will not be removed completely after spinning. - Wash small and large items of laundry together.
	Clean the drain pump; →page 11 Outlet pipe/drainage hose blocked.
Other displays	Switch off the appliance, wait 5 seconds and switch it back on. If the display appears again, call the after-sales service →page 13

Maintenance



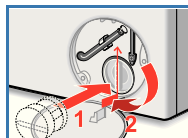
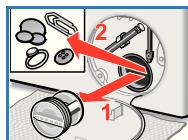
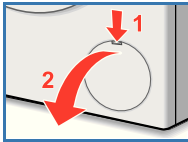
- Risk of scalding. Allow detergent solution to cool down.
- Turn off the tap.



Drain pump blocked

Set programme selector to ● **Off**, pull out the mains plug.

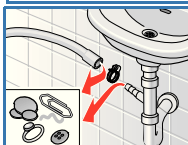
1. Open service flap.
 2. Take the drainage hose out of the holder.
 3. Remove sealing cap, allow detergent solution to flow out. Have a suitable container ready. Push up the closing cap and place the drain hose back in its holder.
 4. Carefully unscrew the pump cover (Caution! residual water). Clean the interior, pump cover thread and pump housing (fan impeller in the detergent-solution pump must rotate).
 5. Reinsert and screw on pump cover. Handle should be vertical.
 6. Close the service flap.
- To prevent unused detergent from flowing into the outlet during the next wash: Pour 1 litre of water into dispenser **II** and start the **Spin** or **Drain** programme.



Drainage hose on the siphon blocked

Set programme selector to ● **Off**, pull out the mains plug.

1. Loosen hose clip, carefully remove drainage hose (Caution! residual water).
2. Clean drainage hose and siphon spigot.
3. Re-attach drainage hose and secure connection point with hose clip.

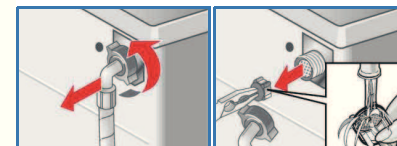
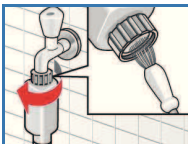


Filter blocked in water inlet hose


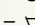


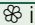


Risk of electric shock!
Do not immerse Aqua-Stop safety device in water (contains electric valve).

Release water pressure in the supply hose:

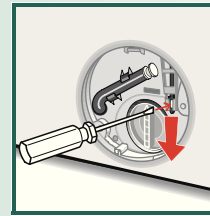
1. Turn off the tap!
2. Select any programme (except **Rinse/Freshen up** , **Spin** or **Drain**).
3. Press **Start/Reload** button. Leave programme for approx. 40 seconds.
4. Set programme selector to ● **Off**. Pull out the mains plug. Clean the filter:
5. Disconnect the hose from the water tap. Clean filter with small brush.
and/or for standard and Aqua-Secure models: remove hose from the rear of the appliance. Take out filter with pliers and clean.
6. Connect the hose and check for leaks.



What to do if ...

- Water is leaking out.
 - Fit/refit the drainage hose correctly.
 - Tighten the screw connection of the supply hose.
- There is no water supply. Detergent is not dispensed.
 - **Start/Reload**  not selected?
 - Water tap not turned on?
 - Supply hose filter blocked? Clean the filter. →page 11
 - Supply hose kinked or trapped?
- Washing machine door cannot be opened.
 - Safety function active. Programme stopped? →page 4
 -  (Rinse stop = no final drain/spin) selected? →page 6
 - Can be opened by emergency release only. →page 13
- Programme does not start.
 - **Start/Reload**  or  **Finish-in time** selected?
 - Washing machine door closed?
- Detergent solution is not drained.
 - Clean the drain pump. →page 11
 - Clean the waste pipe and/or drainage hose.
- Water not visible in the drum.
 - Not a fault - water below the visible area.
- The spin result is not satisfactory.
 - Wash small and large items of laundry together.
 - Selected speed too low? →page 6
- The spin cycle performs several times.
 - This is not a fault – the unbalanced load detection system adjusts the imbalance.
- Compartment  is not rinsed out completely.
 - Remove the insert. Clean the detergent drawer and insert. →page 10
- Odour forms in the washing machine.
 - Run the **Drum Clean**  **90 °C** programme without laundry.
 - Use standard detergent.
- Foam escapes from the detergent drawer.
 - Too much detergent used?
Mix 1 tablespoon of fabric softener with ½ litre of water and pour this mixture into compartment II in the detergent drawer.
 - Reduce detergent dosage for the next wash cycle.
- Excessive noise, vibrations and "wandering" during the spin cycle.
 - Are the appliance's feet fixed?
Secure the appliance's feet. →*Installation instructions, page 5*
 - Have the transport bolts been removed?
Remove the transport bolts.
→*Installation instructions, page 3*
- Display panel/indicator lamps do not light up while the appliance is running.
 - Power failure/off? The interrupted programme will resume once the power returns.
 - Circuit breaker tripped? Reset the circuit breaker/ change the fuse.
 - If the fault occurs repeatedly, call after-sales service.
- The programme sequence is longer than usual.
 - This is not a fault – the unbalanced load detection system adjusts any imbalance by repeatedly distributing the laundry.
 - Not a fault – the foam detection system is active; it adds an additional rinse cycle.
- There are detergent residues on the laundry.
 - Occasionally, phosphate-free detergents contain water-insoluble residues.
 - Select **Rinse/Freshen up**  or brush the laundry after washing.
- If you cannot correct a fault yourself or a repair is required:
 - Turn the programme selector to ● **Off** and pull the mains plug out of the socket.
 - Turn off the tap and call customer service. →page 13

Emergency release e.g. in the event of power failure



The interrupted programme will resume once the power returns. However, if the laundry has to be removed, the washing machine door can be opened as follows:



*Risk of scalding.
The detergent solution and laundry may be hot.
If possible, leave it to cool down.
Do not reach into the drum if it is still rotating.
Do not open the washing machine door if water can be seen through the glass.*

- Set the programme selector to ● **Off** and disconnect the mains plug.
- Drain the detergent solution. →page 11
- Pull the emergency release with a tool and release it. The washing machine door can then be opened.

Customer service

- If you cannot rectify the fault yourself →page 12: *What to do if ...*, please contact our customer service. We will always find a suitable solution and will avoid a visit from a service technician wherever possible.
- The contact details for all countries can be found in the enclosed customer service directory.
- Please provide the after-sales service team with the product number (E-Nr.) and the production number (FD) for the appliance.

E-Nr. _____ FD _____

Product number Production number

You will find the identification plate containing this information on the frame of the open door, and on the rating plate on the back of the appliance.

Rely on the professionalism of the manufacturer. Please contact us. This will ensure that the repair is carried out by trained service technicians who arrive equipped with genuine spare parts for your appliance.



Washing machine

WAS28461AU



BOSCH

en Instruction manual