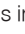
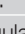
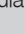
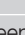
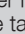


Solving Minor Problems Yourself

Problem	Possible Causes	Solution
Iron does not work or is not heating up.	Temperature control (I) set to minimum.	Turn the temperature control to the desired position.
	Connection problems.	Check that the plug is inserted into the mains socket correctly.
	The "SensorSecure" system has been activated.	Grip the handle of the iron to re-start it.
Iron is not steaming.	There is no water in the tank (E).	Fill the water tank.
	The steam regulator (C) is in the  position.	Set the steam regulator to the relevant position.
Water is dripping from the holes in the soleplate.	Temperature control (I) setting is too low.	Set the temperature control within the steam area (between the "••" and "max") or turn the steam regulator (C) to  .
	Steam regulator (C) is set too high in conjunction with a low temperature.	Turn the steam regulator to a lower setting.
	You have pressed the shot of steam button (A) repeatedly without waiting for 5 seconds between each press.	Wait 5 seconds between each press of the jet of steam button.
	Water has been left in the tank when the soleplate was cold, with the steam regulator (C) set at  or  .	Always empty the tank after ironing and set the steam regulator to  after ironing and when filling the tank.
	Distilled water has not been used (see "Filling the water tank" section) or other products such as fragrant water have been added to the tank.	Mix distilled water with tap water as directed in the "Filling the water tank" section and never add any other products to the water tank.
Spray does not work.	No water in the tank.	Add water to the water tank.
	Obstructed mechanism.	Contact an Authorised Technical Service Centre.
The iron begins to smoke when switched on.	During first use: Certain components on the appliance have been lightly greased at the factory and may produce a little smoke when initially heated.	This is completely normal and will stop after a short while.
Deposits come out through the holes in the soleplate.	Traces of lime scale are coming out of the steam chamber.	Carry out a cleaning cycle (see Self Cleaning section).
Flashing lamp on top of handle.	"SensorSecure" system has been activated.	Grip the handle of the iron to re-start it. The pilot light (N) at the front of the handle will stop flashing and will show a continuous light.

You can download this manual from the local homepages of Bosch

Thank you for buying the TDA76 SensorSecure steam iron from Bosch. These instructions contain valuable information about the unique features of this iron and some hints to make ironing easier for you.

Please visit www.bosch-home.co.uk for more product information or to register your product, just follow the link to the Online guarantee registration.

Important


This appliance has been designed exclusively for domestic use and must not be used for industrial purposes.

Carefully read through the operating instructions for the appliance and safeguard them for future reference.

General safety instructions

- The iron must not be left unattended while it is connected to the supply mains.
- Remove the plug from the socket before filling the appliance with water or before pouring out the remaining water after use.
- The appliance must be used and placed on a stable surface.
- When placed on its stand, make sure that the surface on which the stand is placed is stable.
- The iron should not be used if it has been dropped, if there are visible signs of damage or if it is leaking water. It must be checked by an authorized Technical Service Centre before it can be used again.
- With the aim of avoiding dangerous situations, any work or repair that the appliance may need, e.g. replacing a faulty mains cable, must only be carried out by qualified personnel from an Authorised Technical Service Centre.
- This appliance can be used by children aged from 8 years and above and persons with reduced physical, sensory or mental capabilities or lack of experience and knowledge if they have been given supervision or instruction concerning use of the appliance in a safe way and understand the hazards involved. Children shall not play with the appliance. Cleaning and user maintenance shall not be made by children without supervision.

- Keep the iron and its cord out of reach of children less than 8 years of age when it is energized or cooling down.

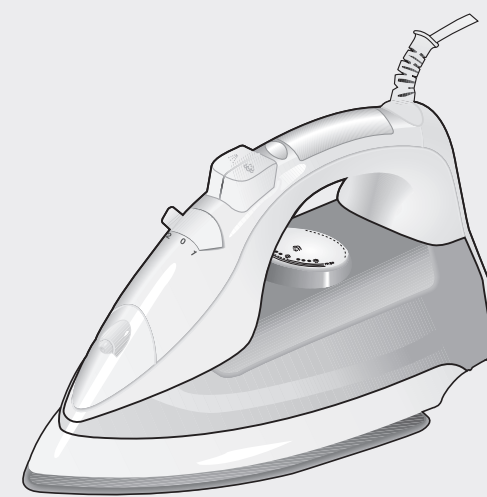
-  CAUTION. Hot surface. Surface is liable to get hot during use.

- This appliance is to be connected and used in accordance with the information stated on its characteristics plate.
- This appliance must be connected to an earthed socket. If it is absolutely necessary to use an extension cable, make sure that it is suitable for 16A and has a socket with an earth connection.
- If the safety fuse fitted in the appliance blows, the appliance will be rendered inoperative. To restore normal operation the appliance will have to be taken to an authorised Technical Service Centre.
- In order to avoid that, under unfavourable mains conditions, phenomena like transient voltage drops or lighting fluctuations can happen, it is recommended that the iron is connected to a power supply system with a maximum impedance of 0.27Ω. If necessary, the user can ask the public power supply company for the system impedance at the interface point.
- Unplug the appliance from the mains supply after each use, or if a fault is suspected.
- The electrical plug must not be removed from the socket by pulling the cable.
- Never immerse the iron in water or any other fluid.
- Do not leave the appliance exposed to weather conditions (rain, sun, frost, etc.).

Tips to help you save energy

Steam production consumes the most energy. To help minimise the energy used, follow the advice below:

- Start by ironing the fabrics that require the lowest ironing temperature.
- Regulate the steam according to the selected ironing temperature.
- Only use steam if necessary. If possible, use the spray function instead.
- Try to Iron the fabrics while they are still damp and reduce the steam setting. Steam will be generated from the fabrics rather than the iron. If you tumble dry your fabrics before ironing them, set the tumble drier to the 'iron dry' programme.
- If the fabrics are damp enough, turn off the steam regulator completely.
- Stand the iron upright during pauses. Resting it horizontally with the steam regulator on generates wasted steam.



TDA 76.. SensorSecure



BOSCH

Customer Service

Great Britain

Bosch Customer Service
Grand Union House
Old Wolverton Road
Milton Keynes
MK12 5PT
UK +44 (0)844 892 8923
IRL +353 (0)1450 2655
www.bosch-home.co.uk

002 TDA76..GB SensorSecure/09/12

Operating instructions

Environmental Care

This iron has been designed according to ecological criteria, related to the sustainable development, analyzing its whole lifecycle - from material selection to its later reusing or recycling - evaluating the improvement possibilities, from a technical, economical and environmental point of view.

Before throwing a used appliance away, you should make it noticeably inoperable e.g. cut off the mains lead and be certain to dispose of it in accordance with current laws and regulations. Your retailer, town council or local council can give you detailed information about these.



This appliance is labelled in accordance with European Directive 2012/19/EU concerning used electrical and electronic appliances (waste electrical and electronic equipment - WEEE).

The guideline determines the framework for the return and recycling of used appliances as applicable throughout the EU.

Before using the Iron for the first time

Please carry out the following steps:

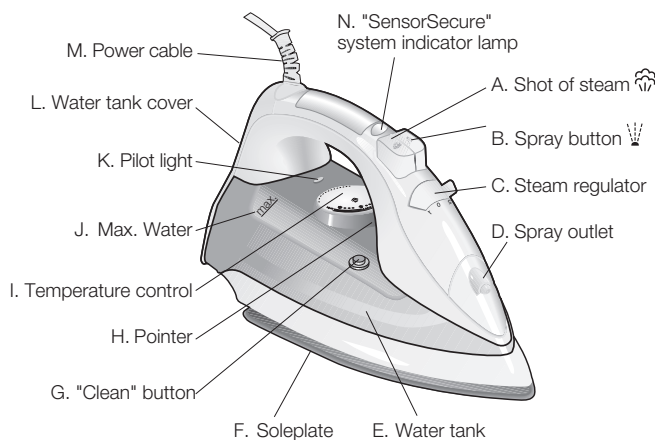
1. Remove the protective cover from the soleplate before using the iron.
2. While the iron is unplugged, fill the water tank (E) with tap water
3. Plug the appliance into the mains and set the temperature control (I) to the "max" position by lining it up with the pointer (H) on the iron.
4. When the iron has reached the correct temperature, the pilot light (K) goes out. Set the steam regulator (C) to the maximum position.
5. Hold the iron horizontally and repeatedly press the shot of steam button (A). Any residue should come out of the soleplate (F). It may smoke and smell – this is normal and will cease after a short while.
6. If necessary, carefully clean the soleplate down with a dry, folded cloth.

GUARANTEE TERMS

The terms of the guarantee for this appliance are in accordance with that stated by our representative for the country in which it is sold. Details of those conditions can be obtained from the retailer from whom the appliance was purchased. The SALES RECEIPT must be presented when making any claims against the terms of this guarantee. We reserve the right to make technical modifications.

Using Your Iron

1 Your iron



2 Filling the water tank

Set the steam regulator (C) to the position and unplug the iron from the mains!

Use only clean water from the tap without mixing anything with it. The addition of other liquids, such as perfume, will damage the appliance.

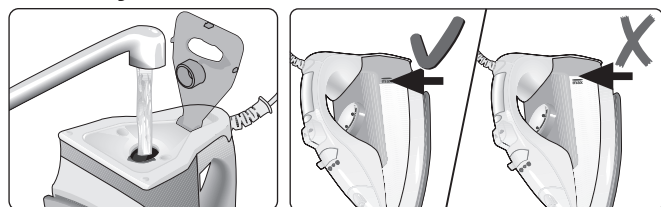
Any damage caused by the use of the aforementioned products, will make the guarantee void.

Do not use condensation water from tumble dryers, air conditioners or similar appliances. This appliance has been designed to use normal tap water.

To prolong the optimum steam function, mix tap water with distilled water 1:1. If the tap water in your district is very hard, mix tap water with distilled water 1:2.

You can inquire about the water hardness with your local water supplier

To prevent spillage of water out of the appliance in vertical position, **never fill beyond the "max" water level mark!**



3 Setting the temperature

The temperature control (I) adjusts the temperature of the soleplate (F).

1. Check the temperature instructions shown on the care label of the garment you are ironing and set the temperature control (I) to the corresponding position by lining it up with the pointer (H) on the iron:

- Coil the power cable (M) loosely around the heel of the iron, before storing.
- Store the iron in an upright position.

10 Self Cleaning

The self clean function helps remove lime scale that has built up around the steam valve.

This should be performed once every 3 or 4 uses.

- When the iron is cold, slide the steam regulator (C) between the and positions in quick succession about 3 or 4 times to help loosen any lime scale and clean the valve inside.
- Heat up the iron. Before starting ironing, hold the iron horizontally over a sink and press the shot of steam button (A) 3 or 4 times. This will help force out any lime scale and dirt deposits through the holes in the soleplate.

11 Multiple de-scaling system

This range of irons is equipped with the following de-scaling features "AntiCalc".

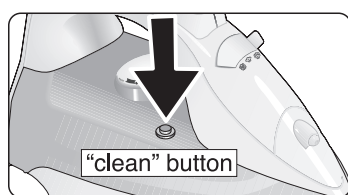
A. self-clean

Each time you use the steam regulator (C), the "self-clean" system cleans the mechanism of any scale deposits.

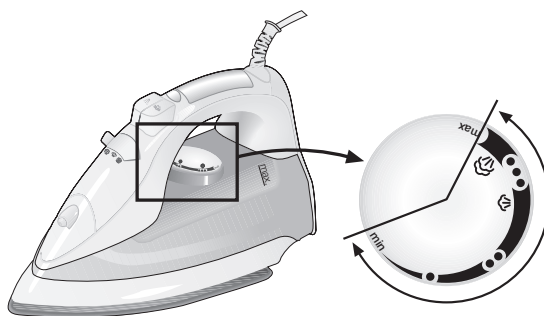
B. calc'n-clean

The "calc'n-clean" function helps to remove scale particles out of the steam chamber. Use this function approximately every 2 weeks, if the water in your area is very hard.

- Unplug the iron from the mains socket, set the steam regulator (C) to the position and fill the water tank (E) with water.
- Set the temperature selector (I) to the "max" position and plug in the iron.
- After the necessary warm-up period, the pilot light (K) goes out. **Then, unplug the iron (very important!).**
- Hold the iron over a sink. Press the "clean" button (G) until approximately one third of the water capacity of the tank is evaporated. Boiling water and steam will come out, carrying scale or deposits that might be there.
- Release the "clean" button, and gently shake the iron for some seconds.
- Repeat the steps 4 and 5 three times until the tank is empty. Then plug the iron in and heat it up again until the remaining water has evaporated.
- Unplug the iron and let the soleplate (F) cool down. Wipe the soleplate with a damp cotton cloth only.



Fabric	Temperature Setting
Synthetics	•
Silk - Wool	••
Cotton - Linen	•••



- If you are unsure what type of material the garment is made from, start ironing on the lowest temperature setting and increase accordingly. If the garment is made from mixed fabrics, set the temperature for the most delicate material.
- For silk, woollen or synthetic materials iron the reverse side of the fabric to prevent shiny patches. Avoid using the spray function to prevent stains.
- Sort your garments based on their care labels, always starting with clothes that have to be ironed at the lowest temperature.
- The pilot lamp (K) will stay lit while the iron is heating up and go out once the selected temperature has been reached. Wait a few seconds after the lamp goes out before you start ironing. Once the iron is ready, you can continue to iron even if the pilot lamp comes on again.
- If the pilot light (N) is flashing, the "SensorSecure" system has activated. Grip the handle of the iron to restart it.

4 Ironing with steam

The steam regulator (C) is used to adjust the amount of steam produced when ironing.

- Make sure that there is water in the tank (E).
- Adjust the temperature setting and then set the steam regulator according to the table below. Steam will automatically be produced:

Temperature Setting	Steam Regulator Setting
••• to "max"	
••	

Note: At a temperature setting of "•", the soleplate is not hot enough to produce steam so the steam regulator should be set to the position to avoid water dripping from the soleplate (F).

Tip: for better ironing results, iron the last strokes without steam to dry the garment.

C. anti-calc cartridge

The anti-calc cartridge has been designed to reduce the build-up of scale produced during steam ironing, helping to extend the useful life of your iron. Nevertheless, the "anti-calc" cartridge cannot remove all of the scale that is produced naturally over time.

12 Anti-drip system "Drip Stop"

The irons in this range are equipped with an anti-drip system. This will automatically stop the iron producing steam when the selected temperature setting is too low to prevent water from dripping out of the soleplate. You may hear a clicking sound when this system is in operation.

13 "SensorSecure"

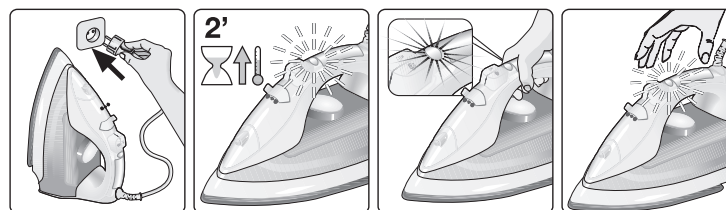
The "SensorSecure" function switches off the iron when the handle is no longer gripped, thus increasing safety and saving energy. After plugging in the appliance, this function will be inactive for the first two minutes while the iron heats up to the set temperature. Immediately after releasing the handle of the iron, the pilot light (N) at the front of the handle will start flashing, indicating that the iron is about to switch itself off.

If the iron handle is not gripped again within 10 seconds, it will shut off automatically.

When the handle is gripped again, the iron will automatically switch itself back on and will start heating again. The pilot light (N) at the front of the handle will stop flashing and will show a continuous light.

Important:

If the iron is left unattended for more than ten minutes, once the handle is momentarily or continuously gripped again, the initial two minute heat up process will start again.



Plug in the appliance Pilot light flashes whilst the iron is heating up Pilot light remains constant when handle is gripped Pilot light will start flashing the moment the handle is released

5 Ironing with shot of steam

This can be used to remove stubborn wrinkles or to press in a sharp crease or pleat. It cannot be used on a synthetic setting for delicate items.

- Set the temperature control (I) to the "•••" or "max" position.
- Set the steam regulator (C) to the position.
- Press the shot of steam (A) button on the handle repeatedly at intervals of 5 seconds.

6 Vertical steaming with shot of steam

This can be used to remove creases from hanging clothes, curtains etc. It cannot be used on a synthetic setting for delicate items.

WARNING! Do not vertical steam while the item is being worn. Never spray or aim steam at people or animals!

- Make sure that there is water in the tank (E).
- Set the temperature control (I) to the "•••" or "max" position and the steam regulator (C) to the position.
- Hold the iron in an upright position about 15 cm away from the garment being steamed.
- Press the shot of steam button (A) on the handle at intervals of 5 seconds, however, after 4 jets of steam, wait for 10 seconds to allow for continued steam production.

7 Ironing without steam

This function enables the iron to be used for dry ironing.

- Set the steam regulator (C) to the position.
- Select an appropriate temperature for the type of material being ironed.

8 Spray

This can be used to remove stubborn wrinkles.

- Do not use the spray function with silk as staining may occur.
- Make sure that there is water in the tank (E).
- When ironing, press the spray button (B) and water will spray out of the spray outlet (D) onto the garment.

9 After finishing each ironing session

- Unplug the iron from the mains socket.
- Set the steam regulator (C) to the position.
- Open the water tank cover (L).
- Hold the iron with the point facing up and shake it gently until all the water has come out.
- If the iron is only slightly soiled, pull out the plug and allow the soleplate to cool down. Wipe the housing and the soleplate with a damp cloth only.
If synthetic cloth melts due to too high temperature on the soleplate, switch off the steam and rub off the residue immediately with a thickly folded, dry cotton cloth.

Fabric protection soleplate cover "Protect"

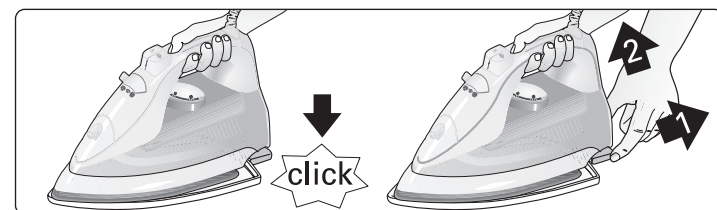
(Model Dependent)

Some irons in this range are equipped with a fabric protection soleplate cover

The fabric protector is used for steam-ironing delicate garments at maximum temperature without damaging them. Use of the protector also does away with the need for a cloth to prevent shine on dark materials.

It is advisable to first iron a small section on the inside of the garment to see if it is suitable.

To attach the fabric protection soleplate cover to the iron, place the tip of the iron into the end of the fabric protector and press the rear of the protector upward until you hear a click. To release the fabric protector, pull down on the clip at the rear and remove the iron.



The protective cover can be purchased from After-sales or the Bosch online shop.

Accessory code (After-sales)	Name of accessory: Protect cover soleplate (online shop)
464851	TDZ1510

Cleaning and Maintenance

Attention ! Risk of burns !
For general cleaning, follow the information below:

Problem	Solution
Dirty/lightly marked iron body or soleplate	Clean the body of iron or soleplate with a damp cloth then dry it.
Mark develops on soleplate during use	Set the iron to its maximum temperature setting. Rub the iron a few times over with a dry cotton cloth folded several times.
Heavily stained soleplate	While the iron is cold, iron a linen cloth soaked in white vinegar. Then dampen a cloth with water and wipe the soleplate clean and dry thoroughly.

DO NOT de-scale or clean the water tank with cleaning products or solvents, as these could cause the iron to drip when using the steam function.

DO NOT use a "professional steam cleaner" for cleaning the appliance.

DO NOT use sharp objects or abrasive products to clean the soleplate or any other part of the appliance. To keep the soleplate in good condition, do not allow it to come into contact with metal objects.