

# Your new dryer

**Congratulations** - You have chosen a modern, high-quality Bosch domestic appliance. The vented dryer is distinguished by its economical energy consumption. Every dryer which leaves our factory is carefully checked to ensure that it functions correctly and is in perfect condition. Should you have any questions, our after-sales service will be pleased to help.

**Disposal in an environmentally-responsible manner**  
Dispose of packaging in an environmentally-responsible manner. This appliance is labelled in accordance with the European guideline 2002/96/EG on waste electrical and electronic equipment - WEEE. The guideline provides an EU-wide framework for the return and recycling of old appliances.

For further information about our products, accessories, spare parts and services, please visit: [www.bosch-home.com](http://www.bosch-home.com)

- Observe the safety instructions on page 11.
- Read these instructions before operating the dryer. Also observe the separate installation instructions for the exhaust air duct!

## Contents

	Page
Preparation	2
Setting the programmes	2
Drying	3/4
Information on laundry	5
Fine adjustment of the drying result	6
Care and cleaning	6
Programme overview	7
Installation	8
Frost protection / Transport	8
Technical data	9
Optional accessories	9
What to do if... / After-sales service	10
Safety instructions	11

- Select On/Off for a acoustic signal at end of programme. **Buzzer**
- Reduced temperature for delicate fabrics that require a longer drying time; e.g. for polyacrylics, polyamide, elastane or acetate. **Low Heat**
- Reduces creasing and extends the anti-creasing phase once the program has ended. **Reduced Ironing**

## Intended use

- for domestic use only,
- only to be used for drying fabrics that have been washed with water.

**Do not leave children unsupervised near the dryer. Keep pets away from the dryer.**  
The dryer can be operated by children 8 years old and older, by persons with reduced physical, sensory or mental abilities and by persons with insufficient experience or knowledge if they are supervised or have been instructed in its use by a responsible adult.

## Preparing for installation, see Page 8

**Never start the dryer if it is damaged! Inform your after-sales service.**

**Make sure your hands are dry. Hold the plug only.**

## Inspecting the dryer

**Remove all items from pockets. Check for cigarette lighters. The drum must be empty prior to loading.**  
See programme overview on page 7.

## Connecting the mains plug

## Sorting and loading laundry

## Selecting and adjusting the programme

Select the drying programme ...  
... and adapt to individual requirements

Additional functions	Display panel	Time remaining	Programme selector
Buzzer	Drying	h:min	Easy-Care Very Dry
Low Heat	Iron Dry		Cupboard Dry
Reduced Ironing	Cupboard Dry		Iron Dry
	Anti-crease/End		Super Quick 40°
	Door		Timed Programme warm 20°
	Filter / Venting Hose		Timed Programme warm 40°
			Cottons Extra Dry
			Very Dry
			Cupboard Dry
			Iron Dry
			Woollens finish
			Start/Stop
			Anti-crease/End

**Press the Start/Stop button**

**Only operate the dryer with the fluff filter inserted!**

**All buttons are sensitive and only need to be touched lightly.**

**End of programme in 1\*-24 hours (Press button several times if required) (\*depending on the selected programme, e.g. duration 1:54h → 2h. Can always be selected to the next full hour.)**

**Fine adjustment of the drying result**  
The drying result (e.g. Cupboard Dry) can be adjusted over three levels (1 - max. 3) for the Cottons, Easy-Care and Super Quick 40° programmes → presetting = 0. After one of these programmes has been finely adjusted, the setting is retained for the others. Further information → Page 6.

**Service displays**  
Close door. Clean the fluff filter under running water. Check exhaust air line. → Page 6.



## Drying

### Cleaning the fluff filter

- Clean the fluff filter **after** each drying operation.
- Open the door, remove fluff from door/door area.
  - Pull out and fold open the fluff filter.
  - Remove the fluff (by wiping the filter with your hand). If the fluff filter is very dirty or blocked, rinse with warm water and dry thoroughly.
  - Close and reinsert the fluff filter.

### Switching off the dryer

Turn the programme selector to **Off**. Do not leave laundry in the dryer.

### Removing the laundry

The automatic anti-crease function causes the drum to move at specific intervals, the washing remains loose and fluffy for an hour (two hours if the additional **Reduced Ironing** function is also selected depending on model).

### Programme end as soon as the light comes on

### Interrupt programme removing or adding laundry.

- The drying cycle can be interrupted for a brief period so that laundry may be added or removed. The programme selected must then be resumed and completed.
  - Never switch the dryer off before the drying process has ended. Drum and door may be hot!**
- Open door, the drying process is interrupted.
  - Load or remove laundry and close door.
  - If required, select a new programme and additional functions.
  - Press the **Start/Stop** button.

## Information on laundry ...

### Labelling of fabrics

- Follow the manufacturer's care information.**
- Drying at normal temperature.
  - Drying at low temperature → also select **Low Heat**.
  - Do not machine dry.

Observe safety instructions without fail → Page 11!  
Do not tumble-dry the following fabrics for example:  
- Impermeable fabrics (e.g. rubber-coated fabrics).  
- Delicate materials (silk or curtains made from synthetic material) → they may crease.  
- Dripping wet washing high → energy consumption!  
- Laundry contaminated with oil.

### Drying tips

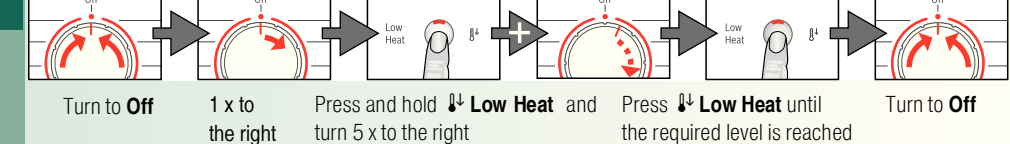
- To ensure a consistent result, sort the laundry by fabric type and drying programme.
- Always dry very small items (e.g. baby socks) together with large items of laundry (e.g. hand towel).
- Close zips, hooks and eyelets, and button up covers. Tie fabric belts, apron strings, etc. together
- Do not over-dry easy-care laundry → risk of creasing! Allow laundry to finish drying in the air.
- Do not dry woollens in the dryer, only use to freshen them up → Page 7, **Woollens finish Programme** (depending on model).
- Do not iron immediately after drying, fold items up and leave for a while → the remaining moisture will then be distributed evenly.
- The drying result depends on the type of water used during washing. → Fine adjustment of the drying result → Page 6.
- Machine-knitted fabrics (e.g. T-shirts or jerseys) often shrink the first time they are dried → do not use the **Extra Dry** programme.
- Starched laundry is not always suitable for dryers → starch leaves behind a coating that adversely affects the drying operation.
- Use the correct dosage of fabric softener as per the manufacturer's instructions when washing the laundry to be dried.
- Use the timer programme for small loads → this improves the drying result.

### Environmental protection / Energy-saving tips

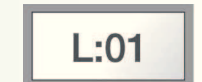
- Before drying, spin the laundry thoroughly in the washing machine → the higher the spin speed the shorter the drying time will be (consumes less energy), also spin easy-care laundry.
- Put in, but do not exceed, the maximum recommended quantity of laundry → programme overview → Page 7.
- Make sure the room is well ventilated during drying.
- Clean the fluff filter after every drying cycle → Page 4.
- Do not obstruct or seal up the air inlet.

## Fine adjustment of the drying result

### Adjustment of the levels of dryness



L:00, L:01, L:02, L:03 are shown in sequence  
Short signal when changing from L:03 to L:00, otherwise long signal.



## Care and cleaning

### Dryer housing, Control panel, Air inlet, Moisture sensors

- Wipe off with a soft, damp cloth.
- Do not use abrasive cleaners or solvents.
- Remove detergent and cleaning agent residue immediately.

### Exhaust air duct

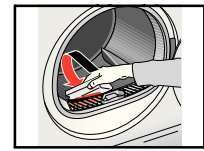
Check the exhaust air duct. Clean the exhaust air duct every six months. Do not bend the exhaust air duct.

- Switch off the dryer and allow it to cool down.
- Disconnect the mains plug.
- Remove the exhaust air duct.
- Clean the exhaust air duct.
- Refit the exhaust air duct → Installation instructions for exhaust air duct.

### Moisture sensors

The dryer is equipped with stainless steel moisture sensors. Moisture sensors measure the moisture level of the laundry. After sustained, repeated operation, a fine layer of limescale may form on the moisture sensors.

- Open the door.
- Clean the moisture sensors using a slightly damp sponge with a rough surface.



Do not use steel wool or abrasive materials.

\*for Cottons and Easy-Care programmes only

\*\*Dryness levels can be selected individually → Extra Dry, Very Dry, Cupboard Dry and Iron Dry (depending on the model).

Degree of dryness can be finely adjusted; multi-layered textiles require a longer drying time than single-layered items of clothing. Recommendation: Dry separately.

9204 1 9000773722

Robert Bosch Hausgeräte GmbH  
Carl-Wery-Str. 34  
D-81739 Munich/Germany

WTV74309GB

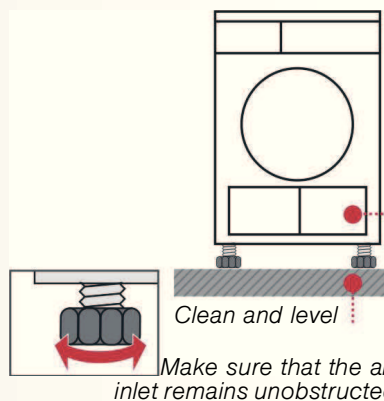
## Installation

- Delivery specification: dryer, instructions for installation and use.
- Check dryer for transport damage.
- The dryer is very heavy. Do not attempt to lift it on your own.
- Be careful to avoid sharp edges.
- Do not lift the dryer by any of the protruding parts (e.g. the door) as they may break off.
- Do not set up in a room that is susceptible to frost. Freezing water may cause damage.
- If in doubt, have the appliance connected by an expert.

### 1. Setting up the dryer

- The appliance plug must always be accessible.
- Ensure that the appliance is installed on a clean, level and solid surface.
- Keep the cooling grille at the front of the dryer unobstructed.
- Keep the area around the dryer clean.
- Make the dryer level using the threaded feet and a spirit level.
- Do not remove the threaded feet under any circumstances.

Take all accessory parts out of the drum. The drum must be empty.



Do not set up the dryer behind a door or sliding door as this may obstruct or prevent the dryer door from opening. This will prevent a potentially fatal danger to children from locking themselves in.

### 2. Mains connection

- Connect to an AC earthed socket. If in doubt have the socket checked by an expert.
- The mains voltage and the voltage shown on the rating plate (→ Page 9) must correspond.
- The connected load and necessary fuse protection are specified on the rating plate.

## Frost protection / Transport

### Preparation

1. Select any programme using the programme selector.
2. Press the Start/Stop button.
3. Turn the programme selector to **Off**.

Do not operate the dryer if there is a danger of frost.

## Technical data

- **Dimensions (DxWxH)** 60 x 60 x 85 cm (height adjustable)
- Weight** approximately 36 kg
- Max. capacity** 8 kg
- Ambient temperature** 5 - 35 °C
- Connection voltage**
- Connected load**
- Fuse protection** see appliance rating plate
- Ambient temperature**
- Product number/ Production number**

You can find the rating plate on the back of the dryer.

### Consumption rates

These are guide values determined under standard conditions. Fluctuations up to 10% are possible.

	Spin speed in rpm (residual moisture)	Drying time in min.**	Energy consumption in kWh**
<b>Cottons 8 kg</b>		<b>13 A</b>	<b>13 A</b>
Cupboard Dry*	1400 (approx. 50 %)	95	3.50
	1000 (approx. 60 %)	118	4.20
	800 (approx. 70 %)	135	4.79
Iron Dry*	1400 (approx. 50 %)	67	2.37
	1000 (approx. 60 %)	90	3.15
	800 (approx. 70 %)	107	3.84
<b>Easy-Care 3.5 kg</b>			
Cupboard Dry*	800 (approx. 40 %)	37	1.18
	600 (approx. 50 %)	44	1.48

\*Test program according to DIN EN 61121.

\*\*The values may differ from the those specified depending on the type of fabric, mixture of laundry to be dried, residual moisture in the fabric and loading capacity.

### Drum interior light (depending on model) (bulb E14, 25 W)

The drum is illuminated after the door is opened or closed, and also after the programme is started. It goes out automatically. Replacing the bulb → Page 10.

## Optional accessories (order from the after-sales service using the order number)

WTZ 1130 **Exhaust air set (depending on model)**  
The exhaust air is conveyed directly via a hose.

WTZ 11310 **Washer-dryer stack connection set**  
The dryer can be placed on top of a suitable washing machine with the same width and depth to save space. This connection set **must** always be used to secure the dryer to the washing machine. With pull-out worktop: WTZ 11300

WTZ 10290 **Installation underneath the worktop**  
**Risk of electric shock!**

Instead of the appliance covering plate, you must have a metal cover fitted by an expert.

## What to do if ...

If you cannot rectify a fault yourself (e.g. switching off/on), please contact our after-sales service. We will always find an appropriate solution and will avoid unnecessary visits by engineers. Trust the expertise of the manufacturer and rest assured that the repair will be carried out by trained service technicians using original spare parts. The contact details of your local after-sales service can be found in the enclosed **after-sales service** directory, or by calling one of these numbers:  
- **GB** 0844 8928979 (Calls from BT landline will be charged at up to 3 pence per minute. A call set-up fee of up to 6 pence may apply.)  
- **IE** 01450 2655

When contacting the after-sales service, please quote the appliance's product number (E no.) and production number (FD) (see the inside of the door). Set the programme selector to **Off** and remove the appliance plug from the socket.

- The Start/Stop indicator lamp does not light up. Mains plug plugged in? Programme selected?
- The Filter/Venting Hose and Start/Stop indicator lights are flashing. Clean the fluff filter under running water → Page 4 Exhaust air duct blocked or knicked? → Clean the exhaust air duct → Page 6. If necessary, clean the insect screen on the exhaust air pipe.
- Dryer does not start. Start/Stop button selected? Door closed? Programme set?
- The door opens by itself and/or the Door indicator light is lit. Push the door closed until you hear it engage.
- Programme terminated shortly after starting. Ambient temperature higher than 5 °C?
- Water is running out. Align dryer horizontally.
- Creasing. Laundry load exceeded? Remove articles of clothing immediately after the end of the programme, hang up and pull into shape. Unsuitable programme selected → Page 7.
- Drying result is not satisfactory (laundry feels too damp). Warm laundry feels damper than it actually is. The selected programme does not suit the load. Use another drying programme or, in addition, select the time programme → Page 7. Use fine adjustment for the drying result → Page 1/2 and 6. Fine layer of limescale on the humidity sensors → Clean the humidity sensors → Page 6. Programme termination, e.g. tank full, mains power supply failure, door open or maximum drying time reached.
- Drying time too long. Rinse the fluff filters under running water → Page 4. Insufficient supply of air → ensure that air can circulate. Air inlet possibly blocked → Clean inlet → Page 8. Ambient temperature higher than 35 °C → ventilate the room.
- The humidity in the room increases significantly. Make sure the room is sufficiently ventilated.
- One or more indicator lights for programme status are flashing. Clean the fluff filter under running water → Page 4. Check installation conditions → Page 8. Exhaust air duct blocked or knicked? → Clean the exhaust air duct → Page 6. If necessary, clean the insect screen on the exhaust air pipe. Switch off, leave to cool down, switch on again, restart programme.
- Mains failure. Remove laundry from the dryer immediately and spread out. This allows the heat to dissipate.
- The interior light is not working (depending on model). Pull out the appliance plug, remove the cover cap in the interior above the door (use Torx 20 screw driver) and replace the bulb. Close the cover cap. Never operate the dryer without a cover cap.
- Condensation in the exhaust air duct. Exhaust air duct too long? Check the maximum exhaust air duct length. Further information → Installation instructions for exhaust air duct.

## Safety instructions

- Emergency ONLY use the dryer...** - Pull the appliance plug out of the socket immediately or disconnect the fuse. - in rooms inside the house. - to dry fabrics.
- The dryer must NEVER...** - be used for other purposes than those described above. - be modified in terms of its technology or attributes.
- Dangers** - The dryer must not be used by children or persons who have not been instructed in its use. - Do not leave children unsupervised near the dryer. - Keep pets away from the dryer. - Remove all objects from pockets. Make especially sure that cigarette lighters are removed as they constitute an **→ explosion hazard**. - Do not lean or sit on the door **→ risk of tipping**. - Open the door with care. Hot steam may escape.
- Installation** - Secure loose cables **→ tripping hazard**. - Do not operate the dryer if there is a risk of frost. - The safety information in the separate installation instructions for the exhaust air duct must be observed without fail.
- Mains connection** - Connect the dryer according to specifications to an AC earthed socket, as otherwise it cannot be guaranteed that the appliance is completely safe. - The cable cross-section must be sufficient. - Only use earth-leakage circuit breakers with the following symbol: - The appliance plug and socket must be compatible. - Do not use multiple plugs/couplings and/or extension cables. - Do not hold the appliance plug with wet hands **→ risk of electric shock**. - Never pull the appliance plug out of the socket by its cable. - Do not damage the mains lead **→ risk of electric shock**.
- Operation** - Only load the drum with laundry. Check the contents before you switch the dryer on. - Do not use the dryer if the laundry has been in contact with solvents, oil, wax, grease or paint (e.g. hair setting spray, nail polish remover, stain remover, cleaning solvent, etc.) **→ fire/explosion hazard**. - Dust (e.g. coal dust, flour) poses a danger: do not use the dryer **→ explosion hazard**. - Do not put laundry containing foamed material/rubber in the dryer **→ elastic material may be destroyed and the dryer may be damaged due to possible deformation of the foamed material**. - Switch off the dryer once the programme has ended.
- Defect** - Do not use the dryer if it is defective or if you suspect it is. Repairs must only be carried out by the after-sales service. - Do not use the dryer if the mains cable is defective. To avoid danger, only have the defective mains cable replaced by the after-sales service. - Always pull the mains plug out of the socket before changing the bulb for the interior light **→ risk of electric shock**.
- Spare parts Disposal** - Only use genuine spare parts and accessories for safety reasons. - Dryer: pull out the appliance plug, **then** cut off the mains cable from the appliance. Dispose of at municipal waste disposal facility. - Packaging: do not leave children alone with packing parts **→ risk of suffocation**. - All materials are environmentally sound and can be reused. Dispose of in an environmentally-responsible manner.



Dryer



en Instruction manual

# Your new dryer

**Congratulations** - You have chosen a modern, high-quality Bosch domestic appliance. The vented dryer is distinguished by its economical energy consumption.

Every dryer which leaves our factory is carefully checked to ensure that it functions correctly and is in perfect condition. Should you have any questions, our after-sales service will be pleased to help.

## Disposal in an environmentally-responsible manner

Dispose of packaging in an environmentally-responsible manner.

This appliance is labelled in accordance with the European guideline  $\times$  2002/96/EG on waste electrical and electronic equipment - WEEE.

The guideline provides an EU-wide framework for the return and recycling of old appliances.

For further information about our products, accessories, spare parts and services, please visit: [www.bosch-home.com](http://www.bosch-home.com)



Observe the safety instructions on page 11.



Read these instructions before operating the dryer. Also observe the separate installation instructions for the exhaust air duct!

## Contents

Page

■ Preparation	2
■ Setting the programmes	2
■ Drying	3/4
■ Information on laundry	5
■ Fine adjustment of the drying result	6
■ Care and cleaning	6
■ Programme overview	7
■ Installation	8
■ Frost protection / Transport	8
■ Technical data	9
■ Optional accessories	9
■ What to do if... / After-sales service	10
■ Safety instructions	11

Select On/Off for a acoustic signal at end of programme.	■ <b>Buzzer</b>
Reduced temperature for delicate fabrics $\square$ that require a longer drying time; e.g. for polyacrylics, polyamide, elastane or acetate.	■ <b>Low Heat</b>
Reduces creasing and extends the anti-creasing phase once the program has ended.	■ <b>Reduced Ironing</b>

## Intended use

- for domestic use only,
- only to be used for drying fabrics that have been washed with water.



*Do not leave children unsupervised near the dryer. Keep pets away from the dryer. The dryer can be operated by children 8 years old and older, by persons with reduced physical, sensory or mental abilities and by persons with insufficient experience or knowledge if they are supervised or have been instructed in its use by a responsible adult.*

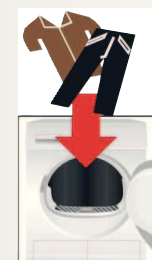
## Preparing for installation, see Page 8



*Never start the dryer if it is damaged! Inform your after-sales service.*



*Make sure your hands are dry. Hold the plug only.*



*Remove all items from pockets. Check for cigarette lighters. The drum must be empty prior to loading.*

*See programme overview on page 7.*

## Selecting and adjusting the

Select the d

... and adapt to indiv

Additional functions	Display panel	Time remaining	Programme selector		
Buzzer <input type="checkbox"/> Low Heat <input type="checkbox"/> Reduced Ironing <input type="checkbox"/>	<input type="radio"/> Drying <input type="radio"/> Iron Dry <input type="radio"/> Cupboard Dry <input type="radio"/> Anti-crease/End <input type="radio"/> Door <input type="radio"/> Filter / Venting Hose		Easy-Care <input type="checkbox"/> Very Dry Cupboard Dry Iron Dry Super Quick 40' Timed Programme warm 20' Timed Programme warm 40'	<input type="radio"/> Cottons Extra Dry Very Dry Cupboard Dry Iron Dry Woollens finish	Start Stop <input type="checkbox"/>



All buttons are need to be tou

Press the



Only operate the fluff filter i

**h:min** End of programme in 1\*-24 hours (Press button several times if required) (\*depending on the selected programme, e.g. duration 1:54h → 2h. Can always be selected to the next full hour.

**Fine adjustment of the drying result** The drying result (e.g. Cupboard Dry) can be adjusted over three levels (1 - max. 3) for the Cottons, Easy-Care and Super Quick 40' programmes → presetting = 0. After one of these programmes has been finely adjusted, the setting is retained for the o. Further information → Page 6.

### Service displays

### Door Filter/Venting Hose

Close door. Clean the fluff filter under running water. Check exhaust air line. → Page 6.

Inspecting the dryer

Connecting the mains plug

Loading laundry

Selecting the programme

Starting the drying programme ...

Additional requirements

Delicate and sensitive and only washed lightly.

Start/Stop button

Inserting laundry into the dryer with care!

0, 1, 2, 3

Others.

# Drying



1  
2

3

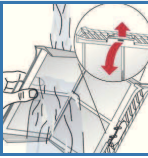
# Drying



## Cleaning the fluff filter

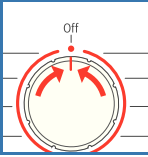
Clean the fluff filter **after** each drying operation.

1. Open the door, remove fluff from door/door area.
2. Pull out and fold open the fluff filter.
3. Remove the fluff (by wiping the filter with your hand).  
If the fluff filter is very dirty or blocked, rinse with warm water and dry thoroughly.
4. Close and reinsert the fluff filter.



## Switching off the dryer

Turn the programme selector to **Off**.  
Do not leave laundry in the dryer.



## Removing the laundry

The automatic anti-crease function causes the drum to move at specific intervals, the washing remains loose and fluffy for an hour (two hours if the additional **Reduced Ironing** function is also selected depending on model).

**Programme end** as soon as the light comes on



**Interrupt programme** removing or adding laundry.



The drying cycle can be interrupted for a brief period so that laundry may be added or removed. The programme selected must then be resumed and completed.



**Never switch the dryer off before the drying process has ended. Drum and door may be hot!**

1. Open door, the drying process is interrupted.
2. Load or remove laundry and close door.
3. If required, select a new programme and additional functions.
4. Press the **Start/Stop** button.

# Information on laundry ...



## Labelling of fabrics

Follow the manufacturer's care information.

- ☑ Drying at normal temperature.
- ☑ Drying at low temperature → also select **Low Heat**.
- ☑ Do not machine dry.



Observe safety instructions without fail → Page 11!

Do not tumble-dry the following fabrics for example:

- Impermeable fabrics (e.g. rubber-coated fabrics).
- Delicate materials (silk or curtains made from synthetic material) → they may crease.
- Dripping wet washing high → energy consumption!
- Laundry contaminated with oil.



## Drying tips

- To ensure a consistent result, sort the laundry by fabric type and drying programme.
- Always dry very small items (e.g. baby socks) together with large items of laundry (e.g. hand towel).
- Close zips, hooks and eyelets, and button up covers. Tie fabric belts, apron strings, etc. together
- Do not over-dry easy-care laundry → risk of creasing! Allow laundry to finish drying in the air.
- Do not dry woollens in the dryer, only use to freshen them up → Page 7, **Woollens finish Programme (depending on model)**.
- Do not iron laundry immediately after drying, fold items up and leave for a while → the remaining moisture will then be distributed evenly.
- The drying result depends on the type of water used during washing. → Fine adjustment of the drying result → Page 6.
- Machine-knitted fabrics (e.g. T-shirts or jerseys) often shrink the first time they are dried → do not use the **Extra Dry** programme.
- Starched laundry is not always suitable for dryers → starch leaves behind a coating that adversely affects the drying operation.
- Use the correct dosage of fabric softener as per the manufacturer's instructions when washing the laundry to be dried.
- Use the timer programme for small loads → this improves the drying result.

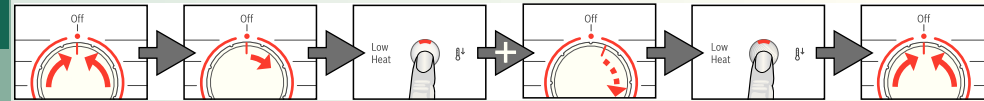
## Environmental protection / Energy-saving tips

- Before drying, spin the laundry thoroughly in the washing machine → the higher the spin speed the shorter the drying time will be (consumes less energy), also spin easy-care laundry.
- Put in, but do not exceed, the maximum recommended quantity of laundry → programme overview → Page 7.
- Make sure the room is well ventilated during drying.
- Clean the fluff filter after every drying cycle → Page 4.
- Do not obstruct or seal up the air inlet.

# Fine adjustment of the drying result



## Adjustment of the levels of dryness



Turn to **Off**

1 x to the right

Press and hold **Low Heat** and turn 5 x to the right

Press **Low Heat** until the required level is reached

Turn to **Off**

L:00, L:01, L:02, L:03 are shown in sequence  
Short signal when changing from L:03 to L:00, otherwise long signal.

L:01



## Care and cleaning



Only when switched off!

### Dryer housing, Control panel, Air inlet, Moisture sensors

- Wipe off with a soft, damp cloth.
- Do not use abrasive cleaners or solvents.
- Remove detergent and cleaning agent residue immediately.

### Exhaust air duct

Check the exhaust air duct. Clean the exhaust air duct every six months. Do not bend the exhaust air duct.

1. Switch off the dryer and allow it to cool down.
2. Disconnect the mains plug.
3. Remove the exhaust air duct.
4. Clean the exhaust air duct.
5. Refit the exhaust air duct → Installation instructions for exhaust air duct.

### Moisture sensors

The dryer is equipped with stainless steel moisture sensors. Moisture sensors measure the moisture level of the laundry. After sustained, repeated operation, a fine layer of limescale may form on the moisture sensors.

1. Open the door.
2. Clean the moisture sensors using a slightly damp sponge with a rough surface.



Do not use steel wool or abrasive materials.

# Programme overview

also see Page 5

Sort the laundry according to type of textile and fabric. Fabrics must be suitable for tumble drying.

After drying...	iron laundry	lightly iron laundry	do not iron laundry	mangle laundry
<b>PROGRAMMES</b>				
<b>TEXTILE TYPE AND INFORMATION</b>				
**Cottons	max. 8 kg	Hard-wearing fabrics, boil-resistant fabrics made of cotton or linen.		
**Easy-Care	max. 3.5 kg	Non-iron laundry made of synthetic fibres and blended fabric, easy-care cotton.		
Iron Dry		Fabrics suitable for ironing (iron fabrics in order to avoid creasing).		
Cupboard Dry		Single-layer fabrics.		
*Very Dry		Fabrics made of thick, multilayered items of clothing.		
*Extra Dry		Fabrics made of very thick, multi-layered items of clothing which need to be dried longer.		
Woollens finish	max. 3 kg	Woolen fabrics suitable for washing machines. Fabrics become fluffier but not dry. Remove fabrics once the programme has ended and allow to dry.		
Super Quick 40'	max. 2 kg	Laundry made of synthetic fibres, cotton or blended fabrics (for example) that needs to be dried quickly. The values may differ from those specified depending on the type of fabric, mixture of laundry to be dried, residual moisture in the fabric and loading capacity.		
Timed Programme warm 40' / warm 20'	max. 3 kg	Pre-dried, multi-layered, sensitive fabrics made of acrylic fibres, or separate small items of laundry. Also for subsequent drying.		

\*for Cottons and Easy-Care programmes only

\*\*Dryness levels can be selected individually → Extra Dry, Very Dry, Cupboard Dry and Iron Dry (depending on the model).

Degree of dryness can be finely adjusted; multi-layered textiles require a longer drying time than single-layered items of clothing. Recommendation: Dry separately.

9204 / 9000773722



Robert Bosch Hausgeräte GmbH  
Carl-Wery-Str. 34  
D-81739 Munich/Germany

WTV74309GB

7

## Installation

- Delivery specification: dryer, instructions for installation and use.
- Check dryer for transport damage.
- The dryer is very heavy. Do not attempt to lift it on your own.
- Be careful to avoid sharp edges.
- Do not lift the dryer by any of the protruding parts (e.g. the door) as they may break off.
- Do not set up in a room that is susceptible to frost. Freezing water may cause damage.
- If in doubt, have the appliance connected by an expert.

### 1. Setting up the dryer

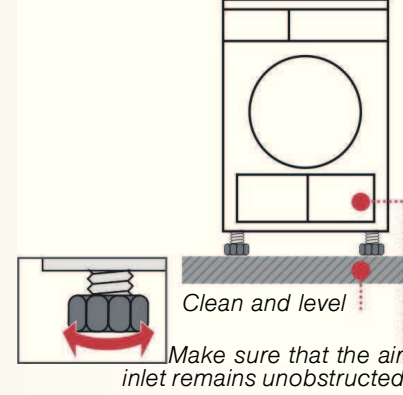
- The appliance plug must always be accessible.
- Ensure that the appliance is installed on a clean, level and solid surface.
- Keep the cooling grille at the front of the dryer unobstructed.
- Keep the area around the dryer clean.
- Make the dryer level using the threaded feet and a spirit level. Do not remove the threaded feet under any circumstances.



Take all accessory parts out of the drum. The drum must be empty.



Do not set up the dryer behind a door or sliding door as this may obstruct or prevent the dryer door from opening. This will prevent a potentially fatal danger to children from locking themselves in.



### 2. Mains connection see safety instructions → Page 11.

- Connect to an AC earthed socket. If in doubt have the socket checked by an expert.
- The mains voltage and the voltage shown on the rating plate (→ Page 9) must correspond.
- The connected load and necessary fuse protection are specified on the rating plate.

## Frost protection / Transport



Do not operate the dryer if there is a danger of frost.



### Preparation

1. Select any programme using the programme selector.
2. Press the Start/Stop button.
3. Turn the programme selector to **Off**.

8

## Technical data

● <b>Dimensions (DxWxH)</b>	60 x 60 x 85 cm (height adjustable)
<b>Weight</b>	approximately 36 kg
<b>Max. capacity</b>	8 kg
<b>Ambient temperature</b>	5 - 35 °C
<b>Connection voltage</b>	
<b>Connected load</b>	
<b>Fuse protection</b>	see appliance rating plate
<b>Ambient temperature</b>	
<b>Product number/ Production number</b>	

You can find the rating plate on the back of the dryer.

● <b>Consumption rates</b>	These are guide values determined under standard conditions. Fluctuations up to 10% are possible.			
	Spin speed in rpm (residual moisture)	Drying time in min.**	Energy consumption in kWh**	
👤 <b>Cottons 8 kg</b>		<b>13 A</b>	<b>13 A</b>	
Cupboard Dry*	1400 (approx. 50 %)	95	3.50	
	1000 (approx. 60 %)	118	4.20	
	800 (approx. 70 %)	135	4.79	
Iron Dry*	1400 (approx. 50 %)	67	2.37	
	1000 (approx. 60 %)	90	3.15	
	800 (approx. 70 %)	107	3.84	
👤 <b>Easy-Care 3.5 kg</b>				
	Cupboard Dry*	800 (approx. 40 %)	37	1.18
		600 (approx. 50 %)	44	1.48

\*Test program according to DIN EN 61121.

\*\*The values may differ from the those specified depending on the type of fabric, mixture of laundry to be dried, residual moisture in the fabric and loading capacity.

- **Drum interior light** (depending on model) (**bulb E14, 25 W**)  
The drum is illuminated after the door is opened or closed, and also after the programme is started. It goes out automatically. Replacing the bulb → Page 10.

## Optional accessories (order from the after-sales service using the order number)

WTZ 1130	<b>Exhaust air set</b> (depending on model) The exhaust air is conveyed directly via a hose.
WTZ 11310	<b>Washer-dryer stack connection set</b> The dryer can be placed on top of a suitable washing machine with the same width and depth to save space. This connection set <b>must</b> always be used to secure the dryer to the washing machine. With pull-out worktop: WTZ 11300
WTZ 10290	<b>Installation underneath the worktop</b> <b>Risk of electric shock!</b> Instead of the appliance covering plate, you must have a metal cover fitted by an expert.

## What to do if ...



If you cannot rectify a fault yourself (e.g. switching off/on), please contact our after-sales service. We will always find an appropriate solution and will avoid unnecessary visits by engineers. Trust the expertise of the manufacturer and rest assured that the repair will be carried out by trained service technicians using original spare parts. The contact details of your local after-sales service can be found in the enclosed **after-sales service** directory, or by calling one of these numbers:

- **GB** 0844 8928979 (Calls from BT landline will be charged at up to 3 pence per minute. A call set-up fee of up to 6 pence may apply.)
- **IE** 01450 2655


When contacting the after-sales service, please quote the appliance's product number (E no.) and production number (FD) (see the inside of the door).

Set the programme selector to **Off** and remove the appliance plug from the socket.

● The Ⓢ <b>Start/Stop</b> indicator lamp does not light up.	Mains plug plugged in? Programme selected?
● The <b>Filter/Venting Hose</b> and Ⓢ <b>Start/Stop</b> indicator lights are flashing.	Clean the fluff filter under running water → Page 4 Exhaust air duct blocked or knicked? → Clean the exhaust air duct → Page 6. If necessary, clean the insect screen on the exhaust air pipe.
● Dryer does not start.	Ⓢ <b>Start/Stop</b> button selected? Door closed? Programme set?
● The door opens by itself and/or the <b>Door</b> indicator light is lit.	Push the door closed until you hear it engage.
● Programme terminated shortly after starting.	Ambient temperature higher than 5 °C?
● Water is running out.	Align dryer horizontally.
● Creasing.	Laundry load exceeded? Remove articles of clothing immediately after the end of the programme, hang up and pull into shape. Unsuitable programme selected → Page 7.
● Drying result is not satisfactory (laundry feels too damp).	Warm laundry feels damper than it actually is. The selected programme does not suit the load. Use another drying programme or, in addition, select the time programme → Page 7. Use fine adjustment for the drying result → Page 1/2 and 6. Fine layer of limescale on the humidity sensors → Clean the humidity sensors → Page 6. Programme termination, e.g. tank full, mains power supply failure, door open or maximum drying time reached.
● Drying time too long.	Rinse the fluff filters under running water → Page 4. Insufficient supply of air → ensure that air can circulate. Air inlet possibly blocked → Clear inlet → Page 8. Ambient temperature higher than 35 °C → ventilate the room.
● The humidity in the room increases significantly.	Make sure the room is sufficiently ventilated.
● One or more indicator lights for programme status are flashing.	Clean the fluff filter under running water → Page 4. Check installation conditions → Page 8. Exhaust air duct blocked or knicked? → Clean the exhaust air duct → Page 6. If necessary, clean the insect screen on the exhaust air pipe. Switch off, leave to cool down, switch on again, restart programme.
● Mains failure.	Remove laundry from the dryer immediately and spread out. This allows the heat to dissipate.
● The interior light is not working (depending on model).	Pull out the appliance plug, remove the cover cap in the interior above the door (use Torx 20 screw driver) and replace the bulb. Close the cover cap. Never operate the dryer without a cover cap.
● Condensation in the exhaust air duct.	Exhaust air duct too long? Check the maximum exhaust air duct length. Further information → <i>Installation instructions for exhaust air duct.</i>

# Safety instructions



- Emergency**
- Pull the appliance plug out of the socket immediately or disconnect the fuse.
- ONLY use the dryer...**
- in rooms inside the house.
  - to dry fabrics.
- The dryer must NEVER...**
- be used for other purposes than those described above.
  - be modified in terms of its technology or attributes.
- Dangers**
- The dryer must not be used by children or persons who have not been instructed in its use.
  - Do not leave children unsupervised near the dryer.
  - Keep pets away from the dryer.
  - Remove all objects from pockets.  
Make especially sure that cigarette lighters are removed as they constitute an → **explosion hazard.**
  - Do not lean or sit on the door → **risk of tipping.**
  - Open the door with care. Hot steam may escape.
- Installation**
- Secure loose cables → **tripping hazard.**
  - Do not operate the dryer if there is a risk of frost.
  - The safety information in the separate installation instructions for the exhaust air duct must be observed without fail.
- Mains connection**
- Connect the dryer according to specifications to an AC earthed socket, as otherwise it cannot be guaranteed that the appliance is completely safe.
  - The cable cross-section must be sufficient.
  - Only use earth-leakage circuit breakers with the following symbol: 
  - The appliance plug and socket must be compatible.
  - Do not use multiple plugs/couplings and/or extension cables.
  - Do not hold the appliance plug with wet hands → **risk of electric shock.**
  - Never pull the appliance plug out of the socket by its cable.
  - Do not damage the mains lead → **risk of electric shock.**
- Operation**
- Only load the drum with laundry.  
Check the contents before you switch the dryer on.
  - Do not use the dryer if the laundry has been in contact with solvents, oil, wax, grease or paint (e.g. hair setting spray, nail polish remover, stain remover, cleaning solvent, etc.) → **fire/explosion hazard.**
  - Dust (e.g. coal dust, flour) poses a danger: do not use the dryer → **explosion hazard.**
  - Do not put laundry containing foamed material/rubber in the dryer → elastic material may be destroyed and the dryer may be damaged due to possible deformation of the foamed material.
  - Switch off the dryer once the programme has ended.
- Defect**
- Do not use the dryer if it is defective or if you suspect it is.  
Repairs must only be carried out by the after-sales service.
  - Do not use the dryer if the mains cable is defective. To avoid danger, only have the defective mains cable replaced by the after-sales service.
  - Always pull the mains plug out of the socket before changing the bulb for the interior light → **risk of electric shock.**
- Spare parts**
- Only use genuine spare parts and accessories for safety reasons.
- Disposal**
- Dryer: pull out the appliance plug, **then** cut off the mains cable from the appliance.  
Dispose of at municipal waste disposal facility.
  - Packaging: do not leave children alone with packing parts → **risk of suffocation.**
  - All materials are environmentally sound and can be reused.  
Dispose of in an environmentally-responsible manner.



Dryer

en Instruction manual