

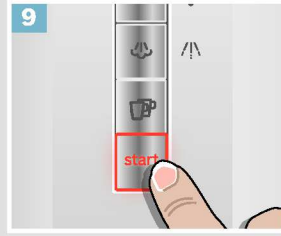
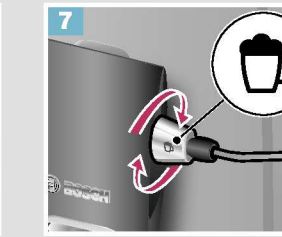
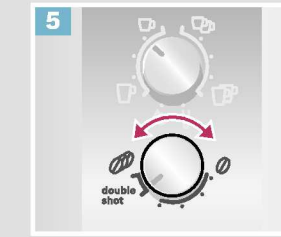
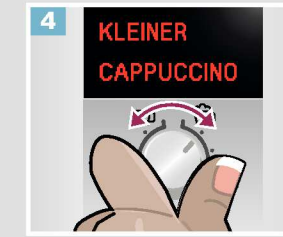
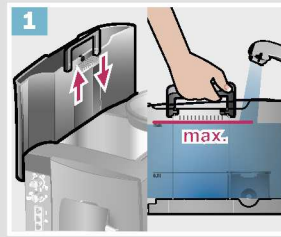


TES506...



Ein Beispiel Zubereitung  
**Cappuccino**

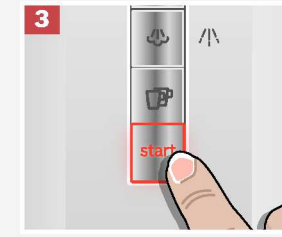
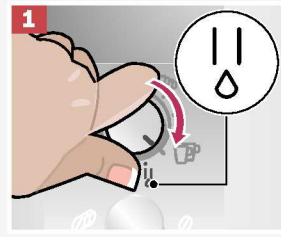
Sample Preparation  
**Cappuccino**



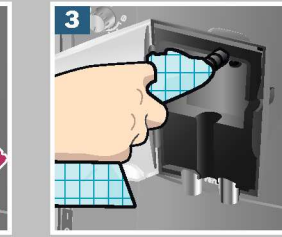
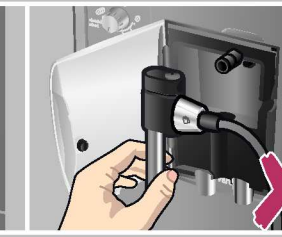
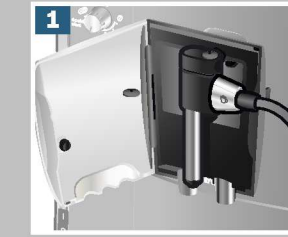
de Kurzanleitung  
en Quick reference guide

Service-Programm  
**Kurzspülen  
Milchsystem**

Service Program  
**Short Rinse  
Milk System**



Reinigen  
**Milchsystem**  
Clean  
Milk system



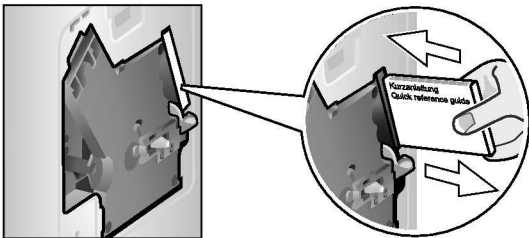
Bitte unbedingt die Sicherheits-  
hinweise in der Gebrauchsanleitung  
lesen und beachten.

Please read the safety information in  
the instruction manual carefully.

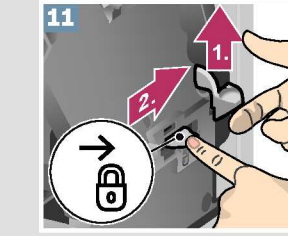
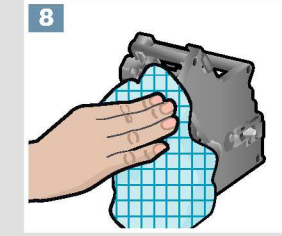
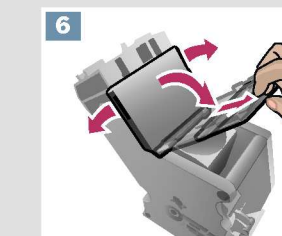
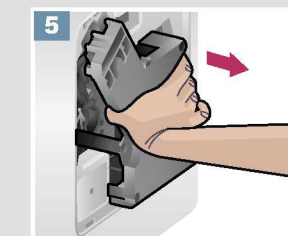
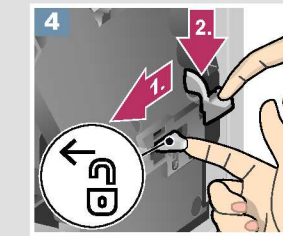
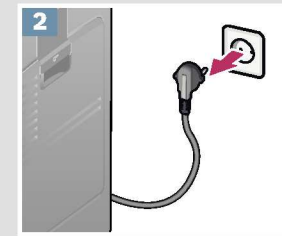


Aufbewahrungsfach für  
Kurzanleitung

Storage compartment for  
quick reference guide



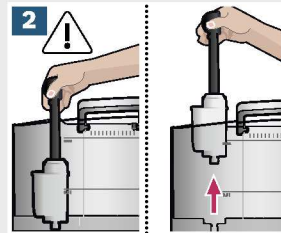
Reinigen  
**Brüheinheit**  
Clean  
Brewing unit



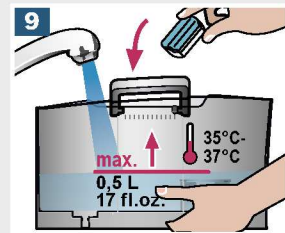
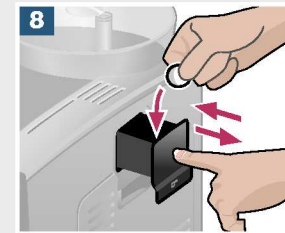
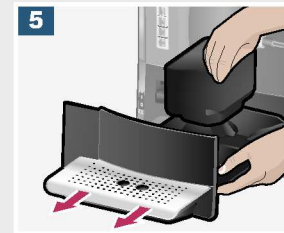


Service-Programm  
**Calc'nClean**  
Service Program  
**Calc'nClean**

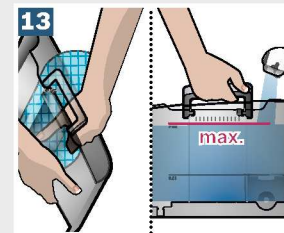
**1** CALC'N'CLEAN  
NOTWENDIG!  
CALC'N'CLEAN  
REQUIRED!



**4** START  
CALC'N'CLEAN  
START  
CALC'N'CLEAN

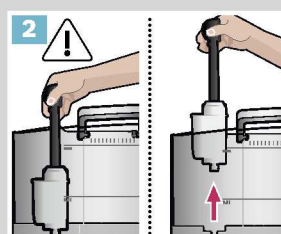


**12** ca. 22 Min.  
approx. 22 min.

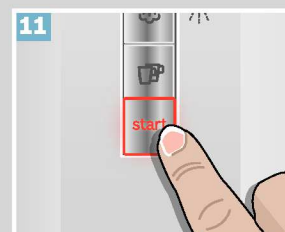
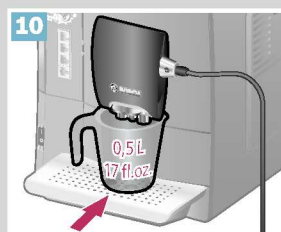
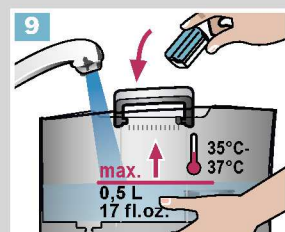


Service-Programm  
**Entkalken**  
Service Program  
**Descale**

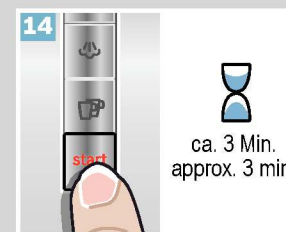
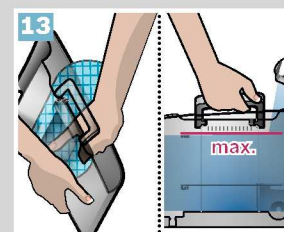
**1** ENTKALKEN  
NOTWENDIG!  
DESCALE  
REQUIRED!



**4** START  
ENTKALKEN  
START  
DESCALING

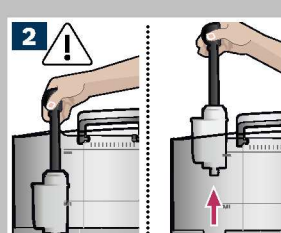


**12** ca. 22 Min.  
approx. 22 min.



Service-Programm  
**Reinigen**  
Service Program  
**Clean**

**1** REINIGEN  
NOTWENDIG!  
CLEAN  
REQUIRED!



**4** START  
REINIGEN  
START  
CLEANING

