

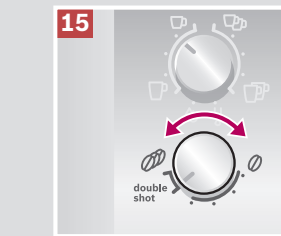
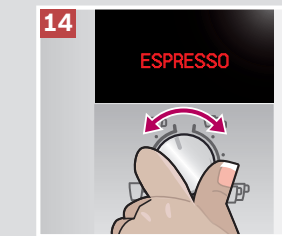
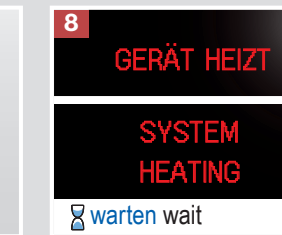
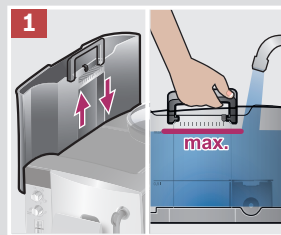


TES 503...

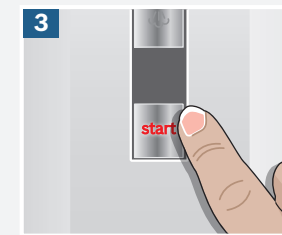
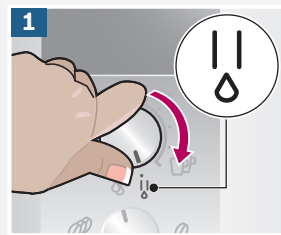


de Kurzanleitung
en Quick reference guide

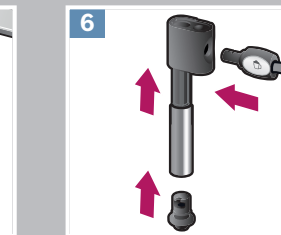
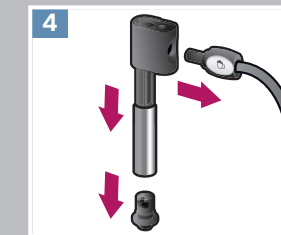
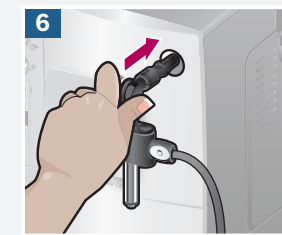
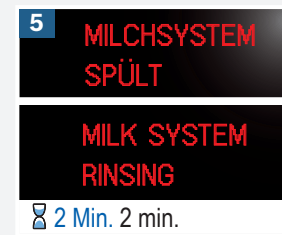
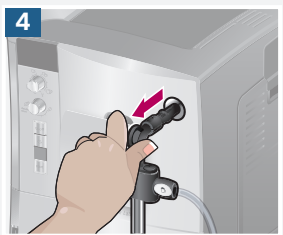
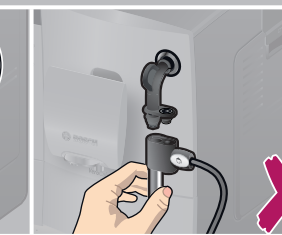
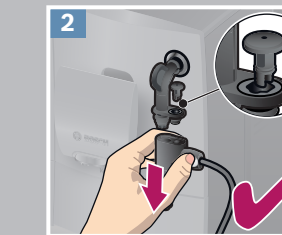
Ein Beispiel Zubereitung
Cappuccino
Sample Preparation
Cappuccino



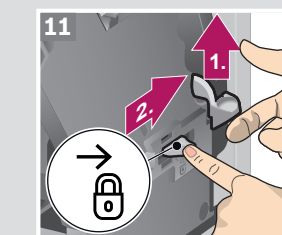
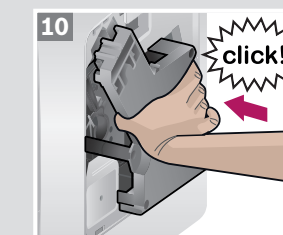
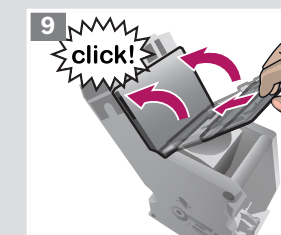
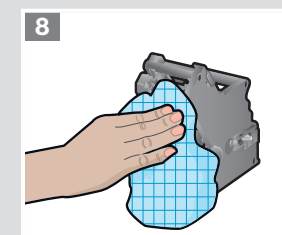
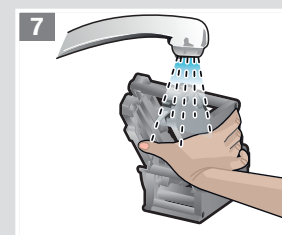
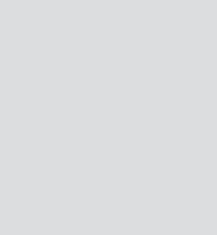
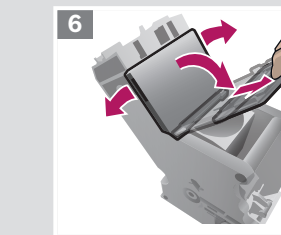
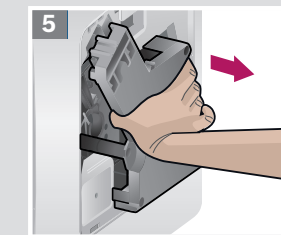
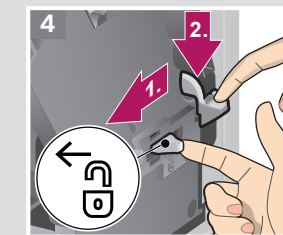
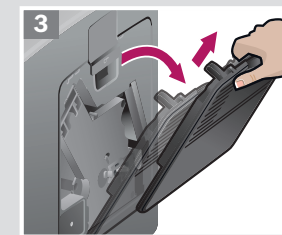
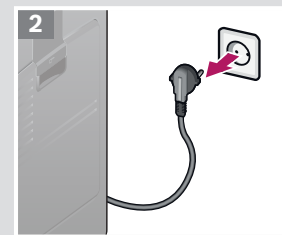
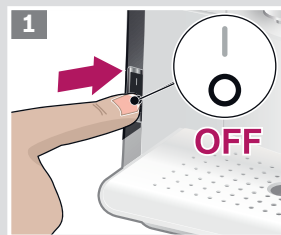
Service-Programm
**Kurzspülen
Milchsystem**
Service Program
**Short Rinse
Milk System**



Reinigen
Milchsystem
Clean
Milk system



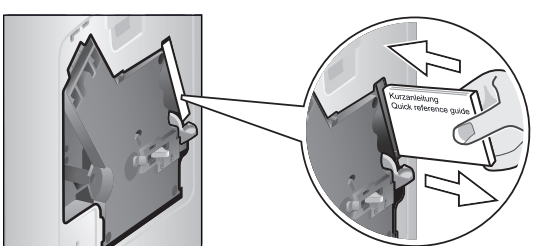
Reinigen
Brüheinheit
Clean
Brewing unit



Bitte unbedingt die Sicherheits-
hinweise in der Gebrauchsanleitung
lesen und beachten.
Please read the safety information in
the instruction manual carefully.

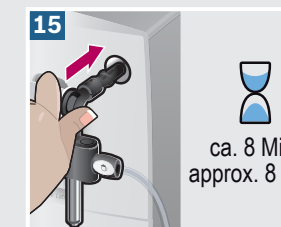
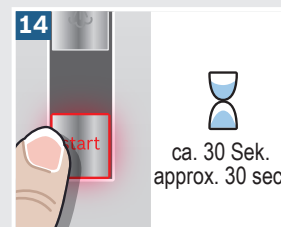
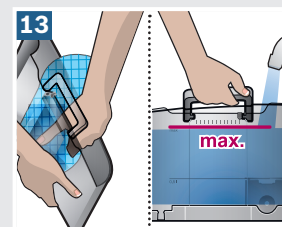
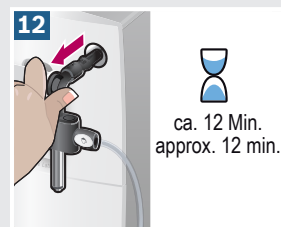
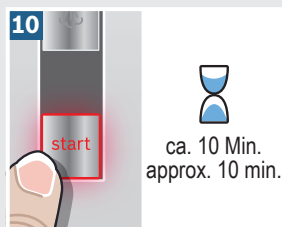
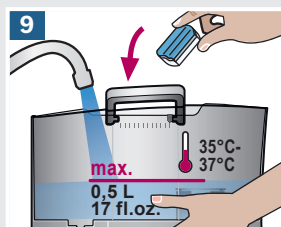
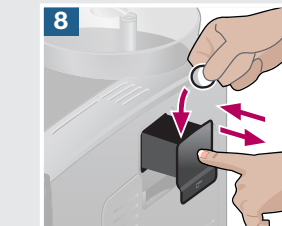
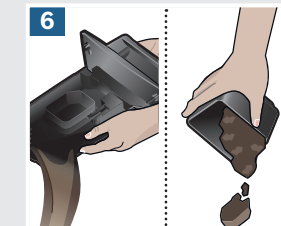
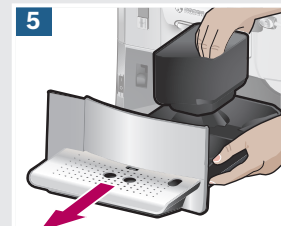
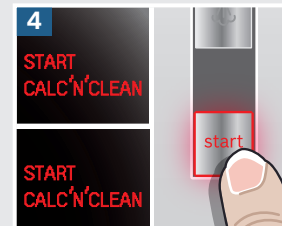
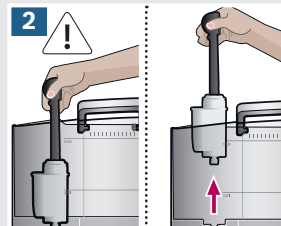


Aufbewahrungsfach für
Kurzanleitung
Storage compartment for
quick reference guide



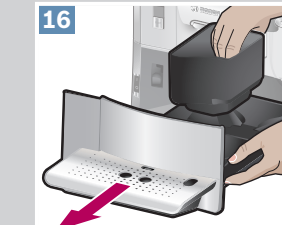
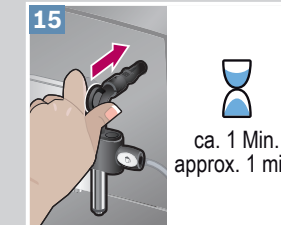
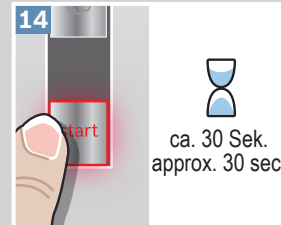
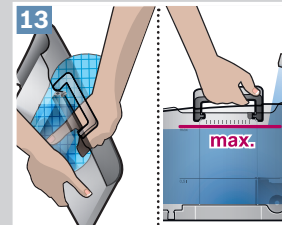
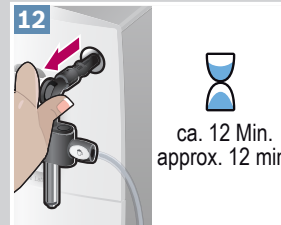
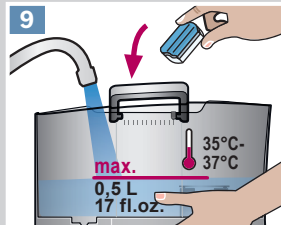
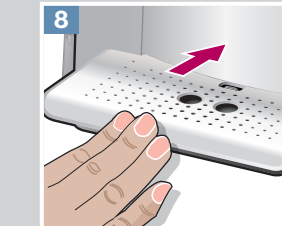
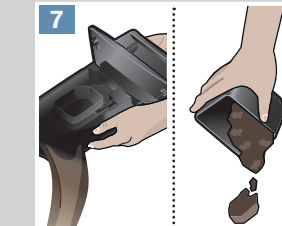
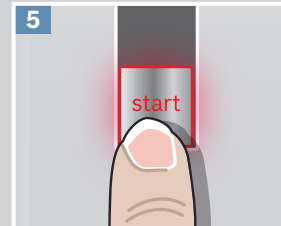
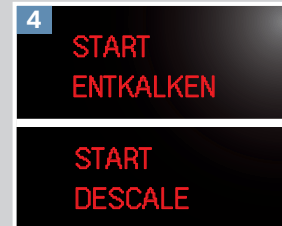
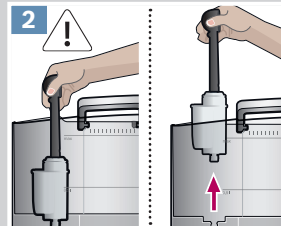
Service-Programm
Calc'nClean
Service Program
Calc'nClean

1 CALC'N'CLEAN
NOTWENDIG!
CALC'N'CLEAN
REQUIRED!



Service-Programm
Entkalken
Service Program
Descale

1 ENTKALKEN
NOTWENDIG!
DESCALE
REQUIRED!



Service-Programm
Reinigen
Service Program
Clean

1 REINIGEN
NOTWENDIG!
CLEAN
REQUIRED!

