

Your washing machine

Congratulations - You have opted for a modern, high-quality domestic appliance manufactured by Bosch. This washing machine is distinguished by its economical water and energy consumption. Each machine that leaves our factory has been inspected thoroughly to ensure that it functions properly and is in perfect condition.

For further information and a selection of our products go to our web site: www.bosch-home.com

Environmentally friendly waste disposal

All packaging must be disposed of in accordance with environmental guidelines. This appliance is certified in accordance with European Directive 2002/96/EC on waste electrical and electronic equipment (WEEE). This directive provides the framework for the EU-wide collection and reuse of used appliances.

Contents

	Page
Intended use	1
Programmes	1
Setting and adjusting the programme	3
Washing	3/4
After washing	4
Individual settings	5
Important information	6
Overview of programmes	7
Safety instructions	8
Consumption values	8
Care	9
Information to indicator lights	9
Maintenance	10
What to do if...	11

Environmental protection/Conservation tips

- Always fill the washing machine with a maximum amount of laundry for the relevant programme.
- Wash normally soiled washing without a pre-wash. (depending on model)
- Instead of **Cottons** 90 °C, choose the programme **Stains** 60 °C. Comparable cleaning result with significantly lower energy consumption.
- Measure the detergent according to the manufacturer's instructions and water hardness.
- If the laundry is then dried in the tumble dryer, select the spin speed according to the instructions of the dryer manufacturer. (depending on model)

Intended use

- for use in the household only,
- for machine-washable fabrics and hand-washable wool in detergent solution,
- to be operated with cold drinking water and commercially available detergents and care products which are suitable for use in washing machines.

- Do not leave children unattended near the washing machine.
- The washing machine is not to be used by children or persons not familiar with the operating instructions.
- Keep pets away from the washing machine.

Preparation

Correct installation according to the separate *Installation instructions*.

Checking the machine

- Never use a damaged machine.
- Inform the after-sales service.

Connecting the mains plug

- Make sure your hands are dry. Take hold of the plug only.

Turning the tap on

- Do not leave children unattended near the washing machine.
- The washing machine is not to be used by children or persons not familiar with the operating instructions.
- Keep pets away from the washing machine.

Washing

Sorting and loading laundry

Follow the manufacturer's care information. According to the information on the care labels. Do not exceed the maximum load -> page 7.

Observe the important information -> page 6. Insert large and small items of laundry between the washing machine door and the rubber seal.

Add detergent and care products

Measure accordingly: Amount of laundry, soiling, water hardness (ask your water supply company) and manufacturer's instructions. Pour liquid detergent into the appropriate dispenser and place in the drum.

Dilute thick fabric softener and fabric conditioner with water. This prevents blockages.

Additional function -> Individual settings, page 5.

Compartment II: Detergent for the main wash, water softener, bleach, stain remover

Compartment ☼: Fabric softener, starch

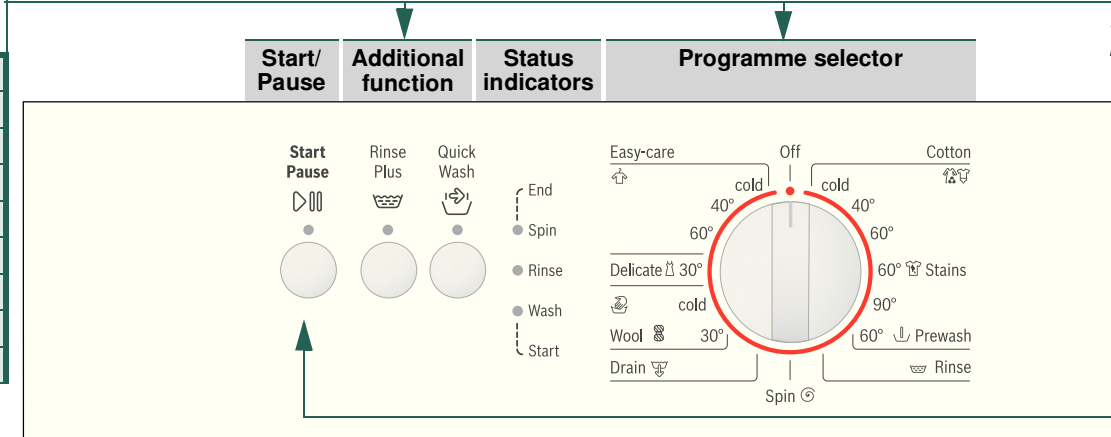
Compartment I: Detergent for pre-wash (model-dependent)

Setting and adjusting programmes

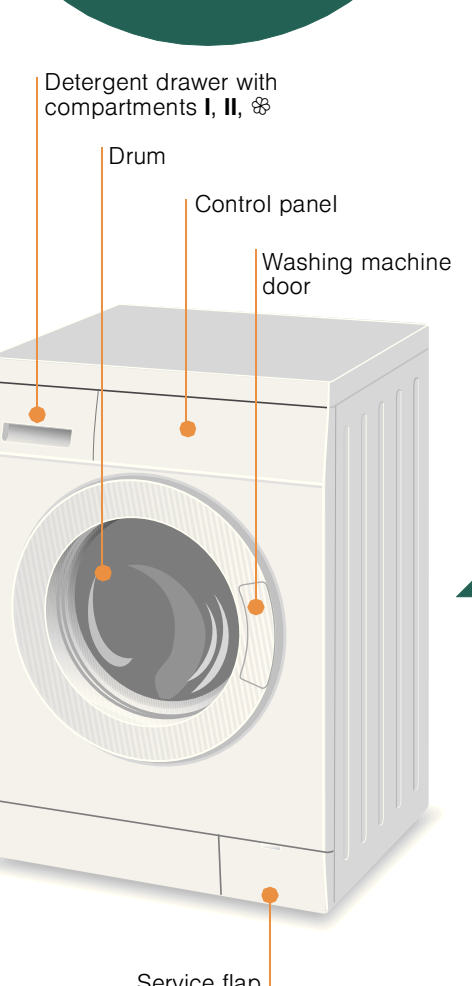
Programmes

Detailed overview of programmes -> page 7.

Cottons 90°C	hard-wearing fabrics
Stains 60°C	hard-wearing fabrics
Prewash 30°C	hard-wearing fabrics, 30 °C -prewash
Easy-Care 40°C	easy-care fabrics
Delicate 30°C	delicate washable fabrics
Wool 30°C	hand/machine-washable textiles
Drain	water
Spin 60°C	laundry washed by hand
Rinse 60°C	with subsequent spin cycle



Programme selector for switching the machine on and off and for selecting the programme. Can be turned in either direction.



Removing the washing

Open the washing machine door and remove the washing.

- Remove any foreign objects - risk of rusting.
- Leave the washing machine door and detergent drawer open so that any residual water can evaporate.

Turning the tap off

Switching off

Turn the programme selector to **Off**.

End of programme when ...

... the status indicator **Spin** flashes.

Interrupting the programme

- Programmes at high temperatures:
 - Cool washing: Select **Rinse**.
 - Washing machine door remains locked.
- Programmes at lower temperatures:
 - Select **Spin** or **Drain**.
 - Select **Start/Pause**.

Changing the programme, if ...

- ... you have selected the wrong programme by mistake:
 - Reselect the programme.
 - Select **Start/Pause**.

Individual settings

Additional function -> and overview of programmes, see page 7

- Rinse Plus**: Additional rinse cycle. For areas with very soft water or for further improvement of the rinsing result.
- Quick Wash**: Reduced wash time - only 2 rinse cycles. Suited for slightly soiled washing. Recommended load: up to a maximum of 3 kg.

Start/Pause

For starting or interrupting the programme.

Important information

Protecting the washing and the machine

- Empty pockets.
- Look out for metal items (paperclips, etc.).
- Wash delicates in a laundry bag (tights, curtains, underwired bras).
- Fasten zips, do up any buttons.
- Brush sand out of pockets and collars.
- Remove curtain fittings or place in the laundry bag.

Washing with varying degrees of soiling

- light: Wash new items of clothing separately. Do not pre-wash.
- heavy: If required, pretreat stains. Select programme **Stains** 60 °C. Load less washing. Select programme **Cottons** + **Prewash** 60 °C.

Soaking

Load washing of the same colour. Pour soaking agent/detergent into compartment **II** in accordance with the manufacturer's instructions. Turn the programme selector to **Cottons** cold and select **Start/Pause**. After approx. 10 minutes, select **Start/Pause** to pause the programme. Once the required soaking time has elapsed, select **Start/Pause** again to continue the programme, or select a different programme.

Starching

Washing must not be treated with fabric softener. Starching is possible in all wash programmes if liquid starch is used. Pour the starch in accordance with the manufacturer's instructions into fabric softener compartment (rinse first if necessary).

Dyeing/bleaching

Dye should only be used in normal household quantities. Salt may damage stainless steel. Always follow the dye manufacturer's instructions! Do not use the washing machine for bleaching clothes!

Programmes	°C	max.	Type of laundry		Additional functions; information
			7 kg	3 kg	
Cottons	cold, 40, 60, 90 °C	7 kg	Hard-wearing fabrics, heat-resistant fabrics made of cotton or linen	Rinse Plus , Quick Wash	
Stains	60 °C	3 kg	Easy-Care fabrics made of cotton, linen, synthetic fibres or blended fabrics	Rinse Plus , Quick Wash	
Prewash	cold, 40, 60 °C	2 kg	For delicate, washable fabrics, e.g. made of silk, satin, synthetic fibres or blended fabrics (e.g. curtains)	Rinse Plus , Quick Wash No spin between rinse cycles	
Easy-Care	cold		Hand- or machine-washable fabrics made of wool or containing wool	Quick Wash Particularly gentle wash programme to prevent shrinkage of laundry. Longer programme breaks (fabrics rest in the detergent solution)	
Delicates	cold, 30 °C				
Wool					

Robert Bosch Hausgeräte GmbH
Carl-Wery-Str. 34
81739 München / Germany

9000 682 341
9302

WAE12060SG
WAE16060SG...

Rinse , Spin , Drain - distribute the detergent between compartments **I** and **II**. (depending on model)

Additional programmes
i Programmes without prewash - add detergent to compartment **II**, programmes with prewash - distribute the detergent between compartments **I** and **II**. (depending on model)

Safety instructions

- Read the instruction manual and installation instructions and all other information enclosed with the washing machine and act accordingly.
- Retain the documents for subsequent use.

Risk of electric shock

- Never pull the cable to disconnect the mains plug.
- Never insert/disconnect the mains plug with damp hands.

Danger to life

For worn-out appliances:

- Disconnect the mains plug.
- Sever the mains cable and discard along with the plug.
- Destroy the lock on the washing machine door. This will prevent children from locking themselves in and risking their lives.

Danger of suffocation

- Keep packaging, film and packaging parts out of the reach of children.

Risk of poisoning

- Keep detergents and care products out of the reach of children.

Risk of explosion

- Items of laundry pretreated with cleaning agents containing solvents, e.g. stain remover/cleaning solvent may cause an explosion after being loaded into the washing machine. Rinse items of laundry thoroughly by hand beforehand.

Risk of injury

- The washing machine door can become very hot.
- Be careful when draining hot detergent solution.
- Do not climb onto the washing machine.
- Do not lean on the open washing machine door.
- Do not reach into the drum if it is still rotating.
- Be careful when opening the detergent drawer while the machine is in operation.

Consumption values

Programme	Load	Electricity consumption**	Water**	Programme duration**
Cottons 40 °C	7 kg	0.85 kWh	65 l	145 min
Cottons 60 °C	7 kg	1.40 kWh	65 l	160 min
Stains 60 °C*	7 kg	1.19 kWh	49 l	155 min
Cottons 90 °C	7 kg	2.10 kWh	70 l	160 min
Easy-Care 40 °C	3 kg	0.55 kWh	48 l	75 min
Delicates 30 °C	2 kg	0.28 kWh	48 l	44 min
Wool 30 °C	2 kg	0.20 kWh	32 l	53 min

* Programme setting with maximum spin speed for testing according to or in accordance with IEC 60 456.

** The values deviate from the indicated values depending on water pressure, hardness, and inlet temperature, ambient temperature, type, amount and soiling of the laundry, detergent used, fluctuations in the power supply and selected additional functions.

The programme used for the evaluation of the captioned model under the Mandatory Water Efficiency Labelling Scheme (MWELS) in Singapore is as follow: Cottons 60°C Stains (Stains 60 °C).

Care

Before washing for the first time

Do not load any laundry into the machine. Turn on the tap. Add the following to compartment **II**:

- approx. 1 litre water
- detergent (dosage according to the manufacturer's instructions for light soiling and the appropriate degree of water hardness)

Set the programme selector to **Easy-Care 60 °C** and select **Start/Pause** . At the end of the programme, turn the programme selector to **Off**.

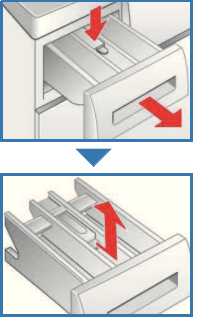
Machine housing, control panel

- Wipe with a soft, damp cloth.
- Do not use any abrasive cloths, scourers or cleaning agents (stainless steel cleaners).
- Remove detergent and cleaning agent residue immediately.
- Do not clean with a jet of water.

Cleaning the detergent drawer ...

... if it contains detergent or fabric softener residues.

- Pull out, press insert down, remove drawer completely.
- To remove the insert: press the insert upwards from below with your finger.
- Clean the detergent dispenser tray and insert with water and a brush and dry it.
- Attach the insert and engage (connect the cylinder to the guide pin).
- Push in the detergent drawer.



Leave the detergent drawer open so that any residual water can evaporate.

Drum

Leave the washing machine door open so that the drum can dry out. Rust stains - use chlorine-free cleaning agent, not steel wool.

Descaling *Ensure there is no laundry in the machine*

Descal the appliance according to the descaler manufacturer's instructions. This should not be necessary if the correct dosage of detergent is used.

Information to indicator lights

Indicator lights for status displays and/or buttons flash:	
Indicator lights Rinse and Wash flash	Close the washing machine door properly; laundry may be caught.
Indicator lights Spin and Wash flash	Open the tap completely, supply hose kinked or trapped; Clean the filter → page 10, Water pressure too low.
Indicator lights Spin and Rinse flash	Detergent solution pump blocked; Clean the detergent solution pump → page 10. Drainage hose/waste pipe blocked; Clean the drainage hose at the siphon → page 10.
Indicator light Rinse flashes	Motor fault. Call the after-sales service.
All indicator lights flash	Turn off the tap and call the after-sales service.

Maintenance

Detergent solution pump

Turn the programme selector to **Off** and disconnect the mains plug.

- Open and remove the service flap.
- For models with a drainage hose:** Remove the drainage hose from the retainer and pull it from the housing. Remove the container. Remove the sealing cap, allow the detergent solution to flow out. Replace the sealing cap and place the drainage hose in the retainer.
- For models without a drainage hose:** Carefully unscrew the pump cover until the detergent solution begins to flow out. When the service flap is half full, close the pump cover and empty the service flap. Repeat the above steps until all the detergent solution has completely drained out.
- Carefully unscrew the pump cover (residual water).
- Clean the interior, pump cover thread and pump housing (the impeller in the detergent solution pump must rotate).
- Replace the pump cover and screw it tightly.
- Place the service flap back on and close.

To prevent unused detergent from flowing straight into the drain during the next wash: Pour 1 litre of water into compartment **II** and start the **Drain** programme.

Drainage hose at the siphon

Turn the programme selector to **Off** and disconnect the mains plug.


- Loosen the hose clamp, carefully remove the drainage hose (residual water).
- Clean the drainage hose and siphon connecting piece.
- Reattach the drainage hose and secure the connection with the hose clamp.

Filter in the water supply

Risk of electric shock
Do not immerse the HydroSafe safety device in water (contains an electric valve).

Reduce the water pressure in the supply hose:

- Turn off the tap.
- Select any programme (except **Spin** or **Drain**).
- Select **Start/Pause** . Let the programme run for approximately 40 seconds.
- Turn the programme selector to **Off**. Disconnect the mains plug.
- Clean the filter: Disconnect the hose from the tap. Clean the filter using a small brush.
- and/or for Standard and HydroSafe models: Remove the hose on the rear of the appliance. Remove the filter with pliers and clean.
- Connect the hose and check for leaks.



What to do if ...

Water is leaking out.	Attach/replace the drainage hose correctly.
No water supply.	Tighten the screw connection of the supply hose.
Detergent not dispensed.	Start/Pause not selected?
	Tap not turned on?
	Filter blocked? Clean the filter → page 10.
	Supply hose kinked or trapped?
Washing machine door cannot be opened.	Safety function active. Wait approx. 2 minutes.
Programme does not start.	Start/Pause selected?
	Washing machine door closed?
Detergent solution is not drained.	Clean the detergent solution pump → page 10.
	Clean the waste pipe and/or drainage hose.
Water not visible in the drum.	Not a fault - water below the visible area.
Unsatisfactory spin result. Laundry wet/too damp.	Not a fault - the unbalanced-load detection system has cancelled the spin cycle because of uneven distribution of the laundry. Distribute small and large items of laundry evenly inside the drum.
Residual water in the compartment for care products.	Not a fault - the action of the care product is not affected.
	Clean the insert if necessary → page 9.
Odour formation in the washing machine.	Run programme Cottons 90 °C without laundry. Use standard detergent.
Foam escaping from the detergent drawer.	Too much detergent used? Mix 1 tablespoon of fabric softener with ½ litre of water and pour into dispenser II (not for outdoor and down-filled textiles!). Reduce the detergent dosage for the next wash cycle.
Intense noise formation, vibrations and "wandering" during the spin cycle.	Are the appliance feet fixed? Secure the appliance feet → Installation instructions.
	Transportation safety devices removed? Remove the transportation safety devices → Installation instructions.
Noises during spin and drain cycles.	Clean detergent-solution pump → page 10.
Display panel/indicator lamps do not function during operation.	Power cut?
	Fuses triggered? Reset/change the fuses.
	If the fault occurs repeatedly, call the after-sales service.
Programme sequence longer than usual.	Not a fault - unbalanced load detection system adjusts imbalance by repeatedly distributing the laundry.
	Not a fault - foam detection system active - adds an additional rinse cycle.
Detergent residues on the laundry.	Occasionally, phosphate-free detergents contain water-insoluble residues.
	Select Rinse or brush the laundry after washing.

If you cannot correct a fault yourself (switching on/off) or a repair is required:

- Turn the programme selector to **Off** and remove the mains plug from the socket.
- Turn off the water supply and call the after-sales service → *Installation instructions*.



Washing machine

en Instruction manual

Your washing machine

Congratulations - You have opted for a modern, high-quality domestic appliance manufactured by Bosch. This washing machine is distinguished by its economical water and energy consumption. Each machine that leaves our factory has been inspected thoroughly to ensure that it functions properly and is in perfect condition.

For further information and a selection of our products go to our web site: www.bosch-home.com

Environmentally friendly waste disposal



All packaging must be disposed of in accordance with environmental guidelines.

This appliance is certified in accordance with European Directive 2002/96/EC on waste electrical and electronic equipment (WEEE). This directive provides the framework for the EU-wide collection and reuse of used appliances.

Contents

	Page
Intended use	1
Programmes	1
Setting and adjusting the programme	3
Washing	3/4
After washing	4
Individual settings	5
Important information	6
Overview of programmes	7
Safety instructions	8
Consumption values	8
Care	9
Information to indicator lights	9
Maintenance	10
What to do if.....	11



Environmental protection/Conservation tips

- Always fill the washing machine with a maximum amount of laundry for the relevant programme.
- Wash normally soiled washing without a pre-wash. (*depending on model*)
- Instead of **Cottons** **90 °C**, choose the programme **Stains** **60 °C**. Comparable cleaning result with significantly lower energy consumption.
- Measure the detergent according to the manufacturer's instructions and water hardness.
- If the laundry is then dried in the tumble dryer, select the spin speed according to the instructions of the dryer manufacturer. (*depending on model*)

Intended use

- for use in the household only,
- for machine-washable fabrics and hand-washable wool in detergent solution,
- to be operated with cold drinking water and commercially available detergents and care products which are suitable for use in washing machines.



- Do not leave children unattended near the washing machine.
- The washing machine is not to be used by children or persons not familiar with the operating instructions.
- Keep pets away from the washing machine.

Programmes

Detailed overview of programmes -> page 7.

Cottons	hard-wearing fabrics
Stains	hard-wearing fabrics
Prewash	hard-wearing fabrics, 30 °C -prewash
Easy-Care	easy-care fabrics
Delicate	delicate washable fabrics
Wool	hand/machine-washable textiles
Drain	water
Spin	laundry washed by hand
Rinse	with subsequent spin cycle

Preparation



Correct installation according to the separate *Installation instructions*.



Checking the machine

- Never use a damaged machine.
- Inform the after-sales service.



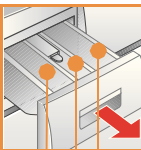
Connecting the mains plug



Make sure your hands are dry. Take hold of the plug only.



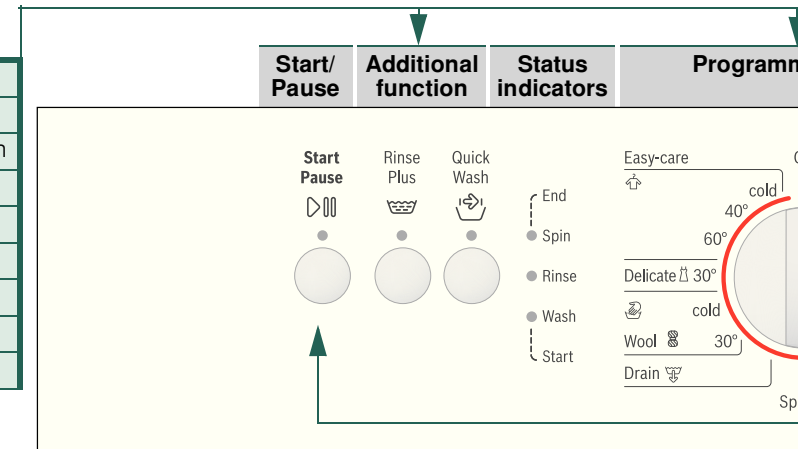
Turning the tap on



Compartment II: Detergent for the main wash, water softener, bleach, stain remover

Compartment : Fabric softener, starch

Compartment I: Detergent for pre-wash (*model-dependent*)



Pr
sw
an
the
tur

Before washing for the first time
Wash once without any laundry -> page 9.

Sorting and loading laundry

Follow the manufacturer's care information. According to the information on the care labels. According to type, colour, soiling and temperature. Do not exceed the maximum load -> page 7.

Observe the important information -> page 6. Insert large and small items of laundry.

Close the washing machine door. Take care not to trap items of laundry between the washing machine door and the rubber seal.

Add detergent and care products

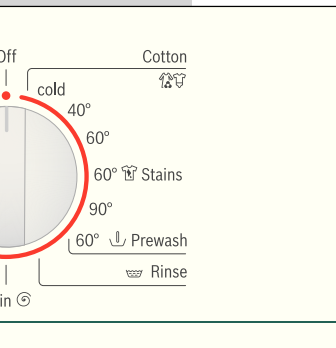
Measure accordingly: Amount of laundry, soiling, water hardness (ask your water supply company) and manufacturer's instructions. Pour liquid detergent into the appropriate dispenser and place in the drum.

i Dilute thick fabric softener and fabric conditioner with water. This prevents blockages.

Setting and adjusting programmes

Additional function -> Individual settings, page 5.

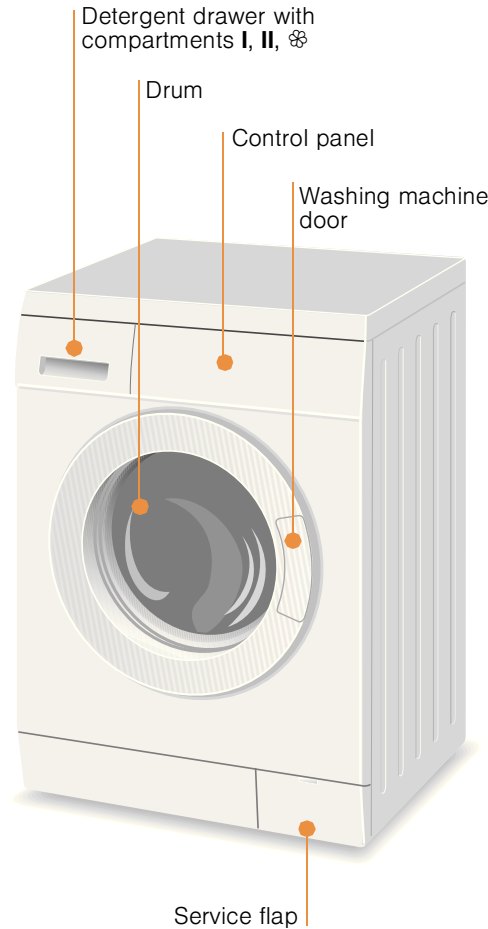
Programme selector



Programme selector for switching the machine on and off and for selecting the programme. Can be turned in either direction.

Select Start/Pause ▷|||

Washing



1

2



Removing the washing

Open the washing machine door and remove the washing.

i - Remove any foreign objects - risk of rusting.
- Leave the washing machine door and detergent drawer open so that any residual water can evaporate.



Turning the tap off



Switching off

Turn the programme selector to **Off**.

End of programme when ...

... the status indicator **Spin** flashes.

Interrupting the programme

Programmes at high temperatures:
- Cool washing: Select **Rinse** 🚿.
Washing machine door remains locked.
Programmes at lower temperatures:
- Select **Spin** ⌚ or **Drain** 🚰.
- Select **Start/Pause** ▷|||.

Changing the programme, if ...


... you have selected the wrong programme by mistake:
- Reselect the programme.
- Select **Start/Pause** ▷|||.

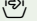
Washing

3

Individual settings

Additional function → and overview of programmes, see *page 7*

Rinse Plus  Additional rinse cycle. For areas with very soft water or for further improvement of the rinsing result.

Quick Wash  Reduced wash time - only 2 rinse cycles. Suited for slightly soiled washing. Recommended load: up to a maximum of 3 kg.

Start/Pause 

For starting or interrupting the programme.



Important information









Protecting the washing and the machine

- Empty pockets.
- Look out for metal items (paperclips, etc.).
- Wash delicates in a laundry bag (tights, curtains, underwired bras).
- Fasten zips, do up any buttons.
- Brush sand out of pockets and collars.
- Remove curtain fittings or place in the laundry bag.

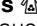
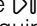
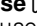
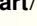


Washing with varying degrees of soiling

		Wash new items of clothing separately.
light		Do not pre-wash. If required, pretreat stains. Select programme Stains  60°C .
heavy		Load less washing. Select programme Cottons  +  Prewash 60°C .

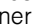


Soaking *Load washing of the same colour*

Pour soaking agent/detergent into compartment **II** in accordance with the manufacturer's instructions. Turn the programme selector to **Cottons**  **cold** and select **Start/Pause** . After approx. 10 minutes, select **Start/Pause**  to pause the programme. Once the required soaking time has elapsed, select **Start/Pause**  again to continue the programme, or select a different programme.



Starching *Washing must not be treated with fabric softener*

Starching is possible in all wash programmes if liquid starch is used. Pour the starch in accordance with the manufacturer's instructions into fabric softener compartment  (rinse first if necessary).



Dyeing/bleaching

Dye should only be used in normal household quantities. Salt may damage stainless steel. Always follow the dye manufacturer's instructions! Do **not** use the washing machine for bleaching clothes!

Overview of programmes

→ Refer to the table of consumption values on page 8 and notes on page 6.

Programmes	°C	max.	Type of laundry	Additional functions; information
Cottons	cold, 40, 60, 90 °C	7 kg	Hard-wearing fabrics, heat-resistant fabrics made of cotton or linen	Rinse Plus , Quick Wash
Stains	60 °C			
Prewash				
Easy-Care	cold, 40, 60 °C	3 kg	Easy-Care fabrics made of cotton, linen, synthetic fibres or blended fabrics	Rinse Plus , Quick Wash
Delicates	cold	2 kg	For delicate, washable fabrics, e.g. made of silk, satin, synthetic fibres or blended fabrics (e.g. curtains)	Rinse Plus , Quick Wash ; No spin between rinse cycles
Wool	cold, 30 °C		Hand- or machine-washable fabrics made of wool or containing wool	Quick Wash ; Particularly gentle wash programme to prevent shrinkage of laundry. Longer programme breaks (fabrics rest in the detergent solution)

Additional programmes

Rinse , **Spin** , **Drain**

I Programmes without prewash - add detergent to compartment **II**, programmes with prewash - distribute the detergent between compartments **I** and **II**. (depending on model)

Robert Bosch Hausgeräte GmbH
Carl-Wery-Str. 34
81739 München / Germany

WAE12060SG
WAE16060SG ...

9000 682 341
9302



Safety instructions

- Read the instruction manual and installation instructions and all other information enclosed with the washing machine and act accordingly.
- Retain the documents for subsequent use.

Risk of electric shock

- Never pull the cable to disconnect the mains plug.
- Never insert/disconnect the mains plug with damp hands.

Danger to life

- For worn-out appliances:
- Disconnect the mains plug.
 - Sever the mains cable and discard along with the plug.
 - Destroy the lock on the washing machine door. This will prevent children from locking themselves in and risking their lives.

Danger of suffocation

- Keep packaging, film and packaging parts out of the reach of children.

Risk of poisoning

- Keep detergents and care products out of the reach of children.

Risk of explosion

- Items of laundry pretreated with cleaning agents containing solvents, e.g. stain remover/cleaning solvent may cause an explosion after being loaded into the washing machine. Rinse items of laundry thoroughly by hand beforehand.

Risk of injury

- The washing machine door can become very hot.
- Be careful when draining hot detergent solution.
- Do not climb onto the washing machine.
- Do not lean on the open washing machine door.
- Do not reach into the drum if it is still rotating.
- Be careful when opening the detergent drawer while the machine is in operation.

Consumption values

Programme	Load	Electricity consumption**	Water**	Programme duration**
Cottons 40 °C	7 kg	0.85 kWh	65 l	145 min
Cottons 60 °C	7 kg	1.40 kWh	65 l	160 min
Stains 60 °C*	7 kg	1.19 kWh	49 l	155 min
Cottons 90 °C	7 kg	2.10 kWh	70 l	160 min
Easy-Care 40 °C	3 kg	0.55 kWh	48 l	75 min
Delicates 30 °C	2 kg	0.28 kWh	48 l	44 min
Wool 30 °C	2 kg	0.20 kWh	32 l	53 min

* Programme setting with maximum spin speed for testing according to or in accordance with IEC 60 456.

** The values deviate from the indicated values depending on water pressure, hardness, and inlet temperature, ambient temperature, type, amount and soiling of the laundry, detergent used, fluctuations in the power supply and selected additional functions.

The programme used for the evaluation of the captioned model under the Mandatory Water Efficiency Labelling Scheme (MWELS) in Singapore is as follows: Cottons 60°C Stains (Stains 60 °C).

Care



- Risk of electric shock. Disconnect the mains plug.
- Risk of explosion. No solvents.

i Before washing for the first time

Do not load any laundry into the machine. Turn on the tap. Add the following to compartment II:

- approx. 1 litre water
- detergent (dosage according to the manufacturer's instructions for light soiling and the appropriate degree of water hardness)

Set the programme selector to **Easy-Care** **60 °C** and select **Start/Pause** . At the end of the programme, turn the programme selector to **Off**.

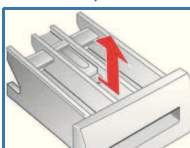
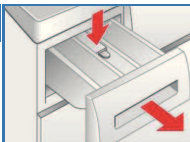
i Machine housing, control panel

- Wipe with a soft, damp cloth.
- Do not use any abrasive cloths, scourers or cleaning agents (stainless steel cleaners).
- Remove detergent and cleaning agent residue immediately.
- Do not clean with a jet of water.

i Cleaning the detergent drawer ...

... if it contains detergent or fabric softener residues.

1. Pull out, press insert down, remove drawer completely.
2. To remove the insert: press the insert upwards from below with your finger.
3. Clean the detergent dispenser tray and insert with water and a brush and dry it.
4. Attach the insert and engage (connect the cylinder to the guide pin).
5. Push in the detergent drawer.



i Leave the detergent drawer open so that any residual water can evaporate.

i Drum

Leave the washing machine door open so that the drum can dry out. Rust stains - use chlorine-free cleaning agent, not steel wool.

i Descaling

Ensure there is no laundry in the machine

Descale the appliance according to the descaler manufacturer's instructions. This should not be necessary if the correct dosage of detergent is used.

Information to indicator lights

Indicator lights for status displays and/or buttons flash:

Indicator lights Rinse and Wash flash	Close the washing machine door properly; laundry may be caught.
Indicator lights Spin and Wash flash	Open the tap completely, supply hose kinked or trapped; Clean the filter -> page 10, Water pressure too low.
Indicator lights Spin and Rinse flash	Detergent solution pump blocked; Clean the detergent solution pump -> page 10. Drainage hose/waste pipe blocked; Clean the drainage hose at the siphon -> page 10.
Indicator light Rinse flashes	Motor fault. Call the after-sales service.
All indicator lights flash	Turn off the tap and call the after-sales service.

Maintenance

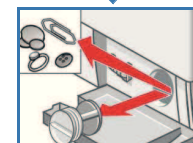
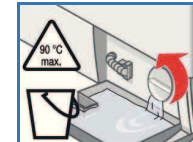
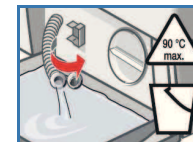
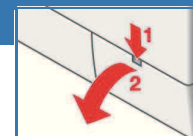


- Risk of scalding. Allow the detergent solution to cool down.
- Turn off the tap.

i Detergent solution pump

Turn the programme selector to **Off** and disconnect the mains plug.

1. Open and remove the service flap.
2. **For models with a drainage hose:** Remove the drainage hose from the retainer and pull it from the housing. Remove the container. Remove the sealing cap, allow the detergent solution to flow out. Replace the sealing cap and place the drainage hose in the retainer.
- 2* **For models without a drainage hose:** Carefully unscrew the pump cover until the detergent solution begins to flow out. When the service flap is half full, close the pump cover and empty the service flap. Repeat the above steps until all the detergent solution has completely drained out.
3. Carefully unscrew the pump cover (residual water).
4. Clean the interior, pump cover thread and pump housing (the impeller in the detergent solution pump must rotate).
5. Replace the pump cover and screw it tightly.
6. Place the service flap back on and close.

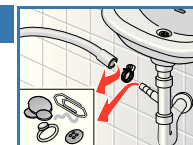


To prevent unused detergent from flowing straight into the drain during the next wash: Pour 1 litre of water into compartment II and start the **Drain** programme.

i Drainage hose at the siphon

Turn the programme selector to **Off** and disconnect the mains plug.

1. Loosen the hose clamp, carefully remove the drainage hose (residual water).
2. Clean the drainage hose and siphon connecting piece.
3. Reattach the drainage hose and secure the connection with the hose clamp.



i Filter in the water supply

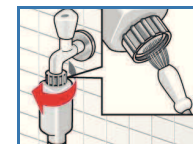


Risk of electric shock

Do not immerse the HydroSafe safety device in water (contains an electric valve).

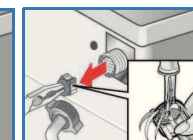
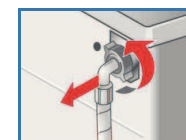
Reduce the water pressure in the supply hose:

1. Turn off the tap.
2. Select any programme (except **Spin** /**Drain**).
3. Select **Start/Pause** . Let the programme run for approximately 40 seconds.
4. Turn the programme selector to **Off**. Disconnect the mains plug.
5. Clean the filter: Disconnect the hose from the tap. Clean the filter using a small brush.

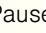
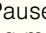




and/or for Standard and HydroSafe models:

- Remove the hose on the rear of the appliance, Remove the filter with pliers and clean.
6. Connect the hose and check for leaks.



What to do if ...

Water is leaking out.	<ul style="list-style-type: none"> – Attach/replace the drainage hose correctly. – Tighten the screw connection of the supply hose.
No water supply. Detergent not dispensed.	<ul style="list-style-type: none"> – Start/Pause  not selected? – Tap not turned on? – Filter blocked? Clean the filter → <i>page 10</i>. – Supply hose kinked or trapped?
Washing machine door cannot be opened.	<ul style="list-style-type: none"> – Safety function active. Wait approx. 2 minutes.
Programme does not start.	<ul style="list-style-type: none"> – Start/Pause  selected? – Washing machine door closed?
Detergent solution is not drained.	<ul style="list-style-type: none"> – Clean the detergent solution pump → <i>page 10</i>. – Clean the waste pipe and/or drainage hose.
Water not visible in the drum.	<ul style="list-style-type: none"> – Not a fault - water below the visible area.
Unsatisfactory spin result. Laundry wet/too damp.	<ul style="list-style-type: none"> – Not a fault - the unbalanced-load detection system has cancelled the spin cycle because of uneven distribution of the laundry. Distribute small and large items of laundry evenly inside the drum.
Residual water in the compartment for care products.	<ul style="list-style-type: none"> – Not a fault - the action of the care product is not affected. – Clean the insert if necessary → <i>page 9</i>.
Odour formation in the washing machine.	<ul style="list-style-type: none"> – Run programme Cottons  90 °C without laundry. Use standard detergent.
Foam escaping from the detergent drawer.	<ul style="list-style-type: none"> – Too much detergent used? Mix 1 tablespoon of fabric softener with ½ litre of water and pour into dispenser II (<i>not for outdoor and down-filled textiles!</i>). – Reduce the detergent dosage for the next wash cycle.
Intense noise formation, vibrations and “wandering” during the spin cycle.	<ul style="list-style-type: none"> – Are the appliance feet fixed? Secure the appliance feet → <i>Installation instructions</i>. – Transportation safety devices removed? Remove the transportation safety devices → <i>Installation instructions</i>.
Noises during spin and drain cycles.	<ul style="list-style-type: none"> – Clean detergent-solution pump → <i>page 10</i>.
Display panel/indicator lamps do not function during operation.	<ul style="list-style-type: none"> – Power cut? – Fuses triggered? Reset/change the fuses. – If the fault occurs repeatedly, call the after-sales service.
Programme sequence longer than usual.	<ul style="list-style-type: none"> – Not a fault - unbalanced load detection system adjusts imbalance by repeatedly distributing the laundry. – Not a fault - foam detection system active - adds an additional rinse cycle.
Detergent residues on the laundry.	<ul style="list-style-type: none"> – Occasionally, phosphate-free detergents contain water-insoluble residues. – Select Rinse  or brush the laundry after washing.

- If you cannot correct a fault yourself (switching on/off) or a repair is required:
- Turn the programme selector to **Off** and remove the mains plug from the socket.
 - Turn off the water supply and call the after-sales service → *Installation instructions*.



Washing machine



en Instruction manual