

Important Safety instructions

- The washing machine is heavy. TO AVOID RISK OF INJURY lift with caution.
- Frozen hoses can tear/burst. Do not install the washing machine outdoors or in an area exposed to freezing conditions.
- These installation instructions are intended for use by qualified installers. In addition to these instructions, if installing the washing machine:
In the United States comply with the National Electric Code, ANSI/NFPA70 – latest edition/State and municipal and/or local regulations.
In Canada comply with the Canadian Electric Code C22.1 – latest edition/provincial and municipal and/or local regulations.
- If the washing machine is located in a room which will be exposed to temperatures below freezing, or if it is located in a cabin that is being shut down for the winter, any residual water in the pump or water inlet hose(s) must be drained.
- Take care not to damage the washing machine. Do not hold on to protruding parts (e.g. door) when lifting.
- In addition to the safety information listed here, the local water end electricity supplier may have special requirements.
- If in doubt, have the washing machine connected by an authorized technician.
- The washer must not be stacked on top of the dryer. Serious injury and damage may result.
- Risk of personal injury or death. DO NOT stack a dryer on top of the washer without the use of one of the stacking kit accessories listed in the dryer manual.

Installation area

- Stability is important to prevent washer from moving excessively during usage.
- The installation area must be firm and level.
- Soft floors/floor coverings are not suitable.
- Appliance must not be mounted on a pedestal for stacked installations.

If installing the washing machine on a base

- It is recommended to secured the feet of the washing machine with holding brackets; order no. WMZ 2200.

If installing the washing machine on a weak wood floor

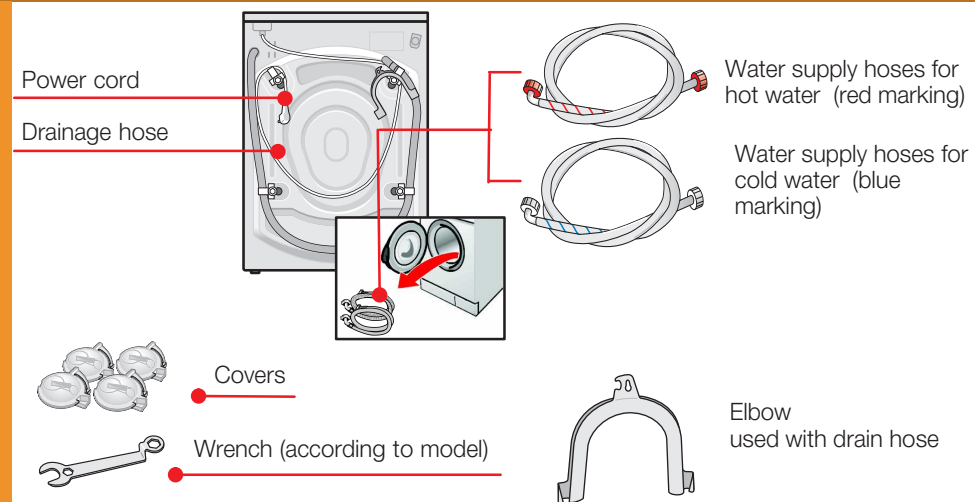
- If possible, install the washing machine in a corner.
- Screw a water-resistant wooden panel (min. 1.18 in. / 30 mm thick) to the floor.
- It is recommended to secured the feet of the washing machine with holding brackets; order no. see above.

If installing the washing machine on a pedestal with drawer

- order no. WMZ 20450.
- To protect the washer drum from shifting, do not remove transportation bolt assemblies prior to installing the washer on the pedestal.

Scope of delivery

according to model
Moisture in the drum is due to endinspection.



Depending on the connection

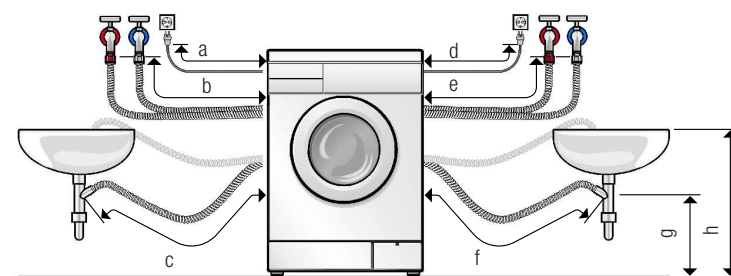
- 1 hose clip \varnothing 0.94" / 24mm - 1.57" / 40mm (commercially available) for connection of the siphon -> page 4; Water connection.

Useful tools

- Bubble level for levelling the water.
- Y-connector (can be obtained from any hardware store) in case there is only a cold water connection.

Hose and cable lengths

Connection on left side or Connection on right side



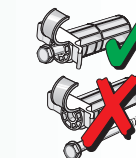
- a = 39in. / 100cm (approx.)
- b = 45in. / 115cm (approx.)
- c = 33in. / 85cm (approx.)
- d = 57in. / 145cm (approx.)
- e = 25in. / 65cm (approx.)
- f = 53in. / 135cm (approx.)
- g = min. 23in. / 60cm
- h = max. 39in. / 100cm

Available commercially or from customer service:

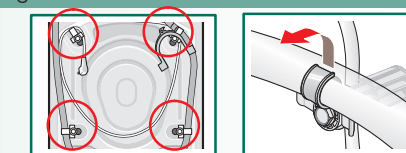
- Longer supply hose 86 1/2 inches (2.2m approx.).

Remove transportation protection devices

- Before using the appliance for the first time, remove all the transportation protection devices and retain for subsequent transportation of the appliance.
- For any future transport, the transport braces must be refitted - this prevents the machine from being damaged. -> page 6.
- Keep the bolt and sleeve screwed together.

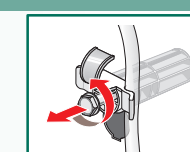


1. Take the hoses and elbow out of the holders, depending on model.

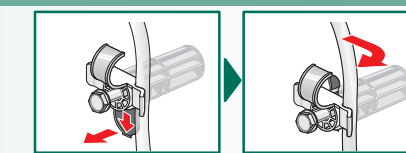


2. Loosen the bolts ...

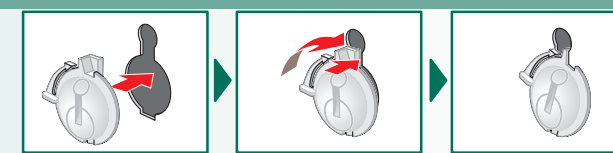
... until they are freely movable in the sleeves.



3. Completely remove all 4 transportation protection devices and take the mains cable out of the holder.



4. Insert covers.



Water connection

- The washing machine must only be operated with cold and hot (max. 140°F / 60°C) faucet water. Do not connect the appliance to the mixer faucet of an unpressurized hot-water boiler.
- To prevent water damage, the hot and cold water valves should be accessible when the washing machine is in place and should always be turned off when the washing machine is not in use.
- If installing the washing machine in a new building or a building in which the plumbing system was recently installed or upgraded, flush the lines before installing the washing machine to remove any sand, dirt or residue.
- The connection points are under full water pressure. Check seal with faucet fully open.
- To prevent leakage or water damage, follow the instructions in this chapter!
- Use only new water supply hoses, do not re-use an old hose. Only use the inlet hose supplied or one which was purchased from an authorized dealer.
- If in doubt, have the appliance connected by a technician.

Water connection

Water supply

Water supply hose:

Attention: The water supply hose must not be kinked, bent or flattened in such a way as to potentially diminish water flow. Also, do not cut or modify the hose.

Optimum water pressure should be between: 14.5 to 120 p.s.i. (1-10bar)

- When the faucet is turned on, the water flow is at least 2,2 U.S. gallons (8 liters) per minute.
- If the water pressure is higher, install a pressure reducing valve.

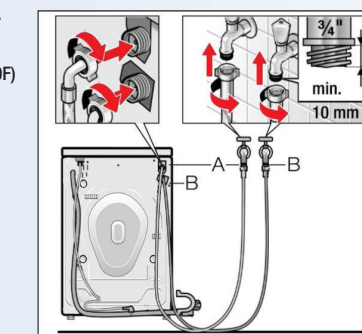
1. Connect water supply hose to the faucet.

Attention: Plastic threads of water connections must be hand-tightened ONLY. Do not tighten with a wrench or pliers

2. Turn on the faucet (faucets) fully.

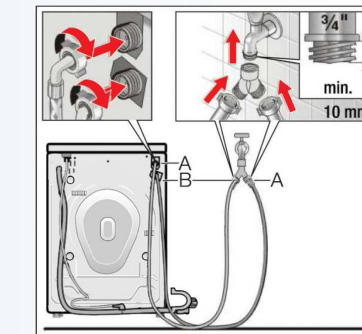
3. Check for leaks at the connection points.

A – cold water
B – hot water
(max. 60°C/140°F)



or:

Use a Y-connector to split a single cold water outlet in order to provide two water supply hose inlets.



Water drainage

Water drainage hose:

Attention: Do not kink or overextend the drain hose.

Height difference between installation area and outlet:
min. 23in. / 60cm - max. 39in. / 100cm

Drainage into a sink/bath tub:

Attention: Secure the drainage hose to prevent it from slipping out of the sink. The plug must not be in the plug hole. When the water is being pumped out of the washing machine, check that the water drains away quickly enough. Do not insert the end of the drainage hose into the pumped off water! There is a risk that water will be drawn back into the washing machine!

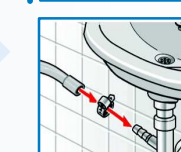
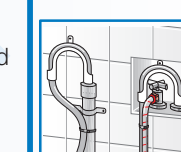
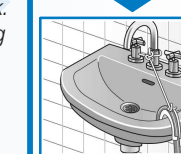
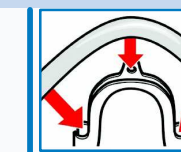
Drainage into a standpipe or in wall installation:

Use the U-bracket. Attach the U-bracket to the end of the hose and insert end of hose into standpipe or wall drain. Use a strap or cable tie connected to U-bracket to hold hose in place.

Drainage into a siphon:

Attention: Secure connection point with hose clip,

\varnothing 0.94" / 24mm - 1.57" / 40mm

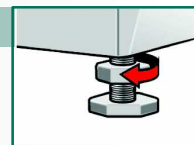


Leveling

! Strong odor, vibrations and "walking" can be the result of incorrect leveling!

Level the washer with a bubble level.

1. Loosen counter nut with wrench counterclockwise.

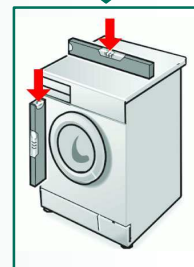


2. Change height by rotating the appliance feet.

Attention: All four appliance feet must be firmly on the floor.

The washing machine must not wobble!

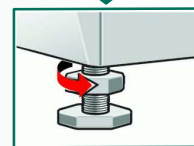
Check alignment of the washing machine with a bubble level and, if required, correct.



3. Tighten the counter nut against the housing.

Hold the feet while doing this and do not change the height.

Attention: The counter nuts of all four washer feet must be screwed tightly against the housing!



Electrical connection

⚠ WARNING

This appliance must be grounded. In the event of a malfunction or breakdown, grounding will reduce the risk of electrical shock by providing a path of least resistance for the electric current. This appliance features a cord with an equipment-grounding conductor and a grounding plug. The plug must be plugged into an appropriate outlet which has been properly installed and grounded in accordance with all local regulations and ordinances.

Improper connection of the equipment grounding conductor may result in electric shock. Have the appliance checked by a qualified electrician or service technician if you are in doubt as to whether the washer has been properly grounded.

Do not modify the plug provided with the appliance – if it will not fit in the outlet, have a proper outlet installed by a qualified electrician.

The washing machine must only be connected to an individual branch circuit via a socket which has been properly installed and grounded.

The household electrical voltage must correspond to the voltage specifications on the washing machine. Connection specifications as well as the required fuses are stipulated on the appliance rating plate.

Volts	Hertz	Amperes
208–240	60	10

Manufacturer (see Operating instructions)

1109 / 9000 484 651

5

Electrical connection

- Make sure that:
 - the power plug fits into the socket.
 - the wire size is sufficient.
 - the grounding system is properly installed.

The power cord may be replaced by an electrician only. Replacement power cords are available from Customer Service. To reduce the risk of fire or electrical shock, DO NOT use an extension cord or an adapter to connect the washing machine to the power supply. Use of a Ground Fault Circuit Interrupter (GFCI) is recommended.

- Electrical plug:
 - do not insert/pull out of the socket with damp hands.
 - do not pull the plug out of the socket by tugging the power cord.
 - never pull out the plug while the appliance is operating.

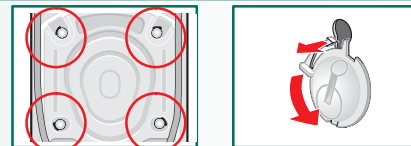
Transportation (such as when moving)

1. Before transporting the washing machine:

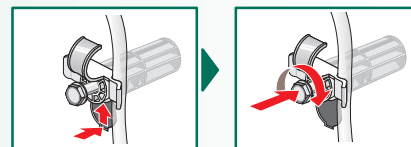
1. Turn off the tap.
2. Release the water pressure in the supply hose. → operating instructions, page 9; Filter in the water supply.
3. Drain any residual detergent solution. → operating instructions, page 9; Detergent solution pump.
4. Isolate the washing machine from the power supply.
5. Remove the hoses.

2. Preparing and installing the transportation protection devices:

1. Remove the covers.



2. Insert all 4 transportation protection devices and clamp the mains cable to the holders. Tighten the bolts.



! After transportation, the transportation protection devices **must** be removed. → page 3.

i To prevent unused detergent from flowing straight into the drain during the next wash: Pour 1 quart (approx. 1 liter) of water into compartment II and start the **Drain** programme.

6

Customer service

Before calling customer service, please check whether you can eliminate the fault yourself. → operating instructions, What to do if ...

User information explained in the instructions provided and troubleshooting issues found in the Operating Instructions "What to do if..." section may not be covered by warranty service. Please carefully rule any of these issues before calling for service.

Contact information for customer service is found in list or via our website → operating instruction. Please give customer service the product number (E-Nr.) and the production number (FD) of the appliance.

E-Nr. _____ FD _____

Product number Production number

You can find the rating plate which contains this information in the frame of the open washing machine door and in the thick bordered box on the appliance rating plate at the back of the appliance.

Please help ensure faster service by providing the product number and production number to prevent unnecessary service calls. This will save you additional costs.

Technical specifications

Dimensions (width x depth x height)	23.6 x 23.2 x 33.2in. / 60 x 59 x 84,2cm
Weight	167,7lbs. (76kg) depending on model
Mains connection (according to model)	Nominal voltage 208–240V, 60Hz Nominal current 10A Nominal power 2000–2300W
Water pressure	14.5 to 120p.s.i. (1-10bar)

Under-counter / closet installation of the machine

! Under-counter / in-cabinet installation before connection to power supply.

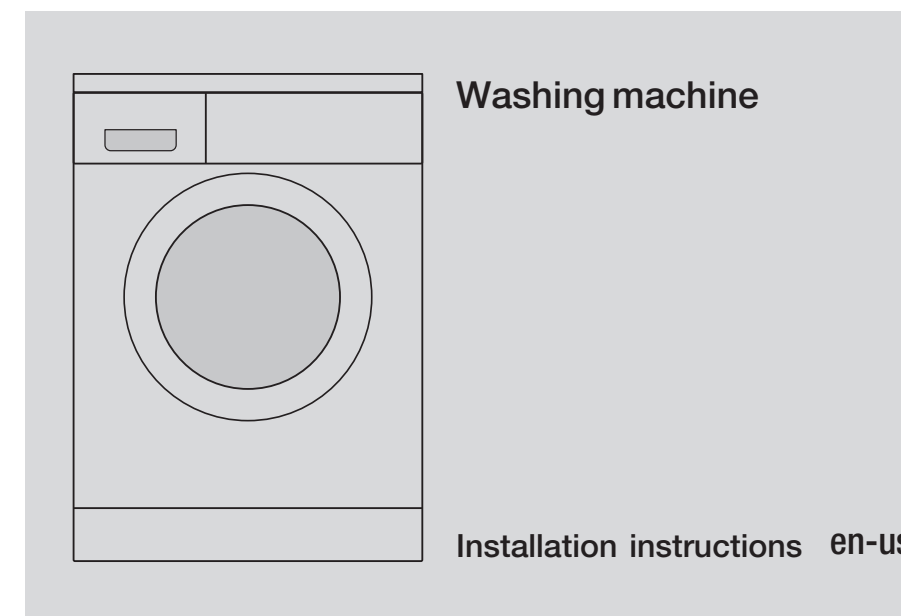
i **Installation in kitchen cabinet** (under-counter or in cabinet)

- Cubicle width of 23.62in. / 60cm is required.
- Only install the washing machine under a continuous counter top which is securely fastened to the neighboring cabinets.
- If installing the washer in a closet, observe the minimum distances:
Side: 0in., rear: 3.35in. / 85mm, top: 0in., front: 3.54in. / 90mm

Built-under appliance

- !** **Risk of electric shock!**
 - 23.62in. / 60cm cavity width required.
 - Instead of the appliance cover panel, have a technician install a sheet metal cover; order no. WMZ 2420.

7



Contents

Page

■ Safety instructions	1
■ Installation area	1
■ Scope of delivery	2
■ Hose and cable lengths	2
■ Remove transportation safety devices	3
■ Water connection	3/4
■ Leveling	5
■ Electrical connection	5/6
■ Transportation (such as when moving)	6
■ Customer service	7
■ Technical specifications	7
■ Under-counter / closet installation of the machine	7

! **WARNING** – to reduce the risk of fire, electric shock, or injury to persons, read the **Important Safety instructions** before operating this appliance. Also follow the separate operating instructions. Retain all documents for subsequent use or for the next owner.



Important Safety instructions

- The washing machine is heavy. TO AVOID RISK OF INJURY lift with caution.
- Frozen hoses can tear/burst. Do not install the washing machine outdoors or in an area exposed to freezing conditions.
- These installation instructions are intended for use by qualified installers. In addition to these instructions, if installing the washing machine:
In the United States comply with the National Electric Code, ANSI/NFPA70 – latest edition/State and municipal and/or local regulations.
In Canada comply with the Canadian Electric Code C22.1 – latest edition/provincial and municipal and/or local regulations.
- If the washing machine is located in a room which will be exposed to temperatures below freezing, or if it is located in a cabin that is being shut down for the winter, any residual water in the pump or water inlet hose(s) must be drained.
- Take care not to damage the washing machine. Do not hold on to protruding parts (e.g. door) when lifting.
- In addition to the safety information listed here, the local water and electricity supplier may have special requirements.
- If in doubt, have the washing machine connected by an authorized technician.
- The washer must not be stacked on top of the dryer. Serious injury and damage may result.
- Risk of personal injury or death. DO NOT stack a dryer on top of the washer without the use of one of the stacking kit accessories listed in the dryer manual.

Installation area

- Stability is important to prevent washer from moving excessively during usage.
- The installation area must be firm and level.
- Soft floors/floor coverings are not suitable.
- Appliance must not be mounted on a pedestal for stacked installations.



If installing the washing machine on a base

- It is recommended to secured the feet of the washing machine with holding brackets; order no. WMZ 2200.

If installing the washing machine on a weak wood floor



- If possible, install the washing machine in a corner.
- Screw a water-resistant wooden panel (min. 1.18 in. / 30 mm thick) to the floor.
- It is recommended to secured the feet of the washing machine with holding brackets; order no. see above.



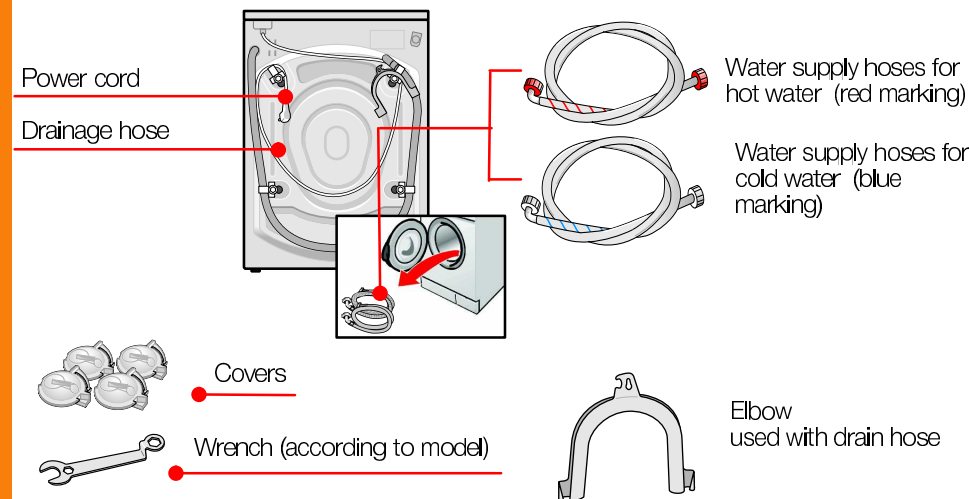
If installing the washing machine on a pedestal with drawer

- order no. WMZ 20450.
- To protect the washer drum from shifting, do not remove transportation bolt assemblies prior to installing the washer on the pedestal.

Scope of delivery

according to model

Moisture in the drum is due to endinspection.



Depending on the connection

- 1 hose clip \varnothing 0.94" / 24mm - 1.57" / 40mm (commercially available) for connection of the siphon -> page 4; Water connection.

Useful tools

- Bubble level for levelling the water.
- Y-connector (can be obtained from any hardware store) in case there is only a cold water connection.

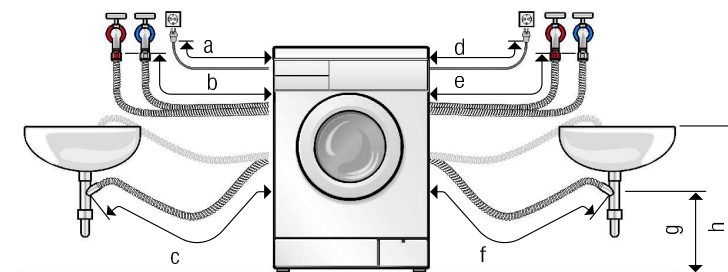
Hose and cable lengths



Connection on left side

or

Connection on right side



a = 39in. / 100cm (approx.)

b = 45in. / 115cm (approx.)

c = 33in. / 85cm (approx.)

d = 57in. / 145cm (approx.)

e = 25in. / 65cm (approx.)

f = 53in. / 135cm (approx.)

g = min. 23in. / 60cm

h = max. 39in. / 100cm

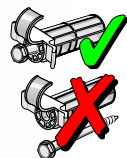
Available commercially or from customer service:

- Longer supply hose 86 1/2 inches (2.2m approx.).

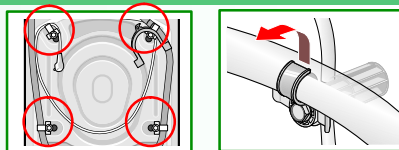
Remove transportation protection devices



- Before using the appliance for the first time, remove all the transportation protection devices and retain for subsequent transportation of the appliance.
- For any future transport, the transport braces must be refitted - this prevents the machine from being damaged. → page 6.
- Keep the bolt and sleeve screwed together.

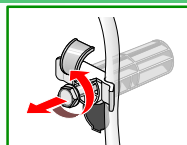


1. Take the hoses and elbow out of the holders, depending on model.

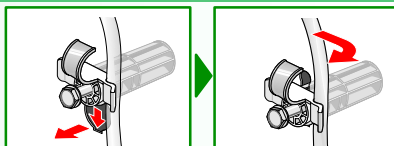


2. Loosen the bolts

... until they are freely movable in the sleeves.



3. Completely remove all 4 transportation protection devices and take the mains cable out of the holder.



4. Insert covers.



Water connection

- The washing machine must only be operated with cold and hot (max. 140°F / 60°C) faucet water. Do not connect the appliance to the mixer faucet of an unpressurized hot-water boiler.
- To prevent water damage, the hot and cold water valves should be accessible when the washing machine is in place and should always be turned off when the washing machine is not in use.
- If installing the washing machine in a new building or a building in which the plumbing system was recently installed or upgraded, flush the lines before installing the washing machine to remove any sand, dirt or residue.
- The connection points are under full water pressure. Check seal with faucet fully open.
- To prevent leakage or water damage, follow the instructions in this chapter!
- Use only new water supply hoses, do not re-use an old hose. Only use the inlet hose supplied or one which was purchased from an authorized dealer.
- If in doubt, have the appliance connected by a technician.

Water connection



Water supply

Water supply hose:

Attention: The water supply hose must not be kinked, bent or flattened in such a way as to potentially diminish water flow. Also, do not cut or modify the hose.

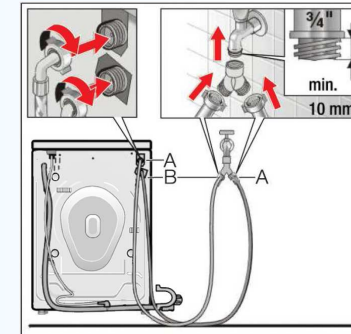
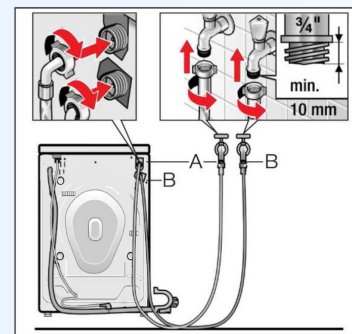
Optimum water pressure should be between: 14.5 to 120 p.s.i. (1-10bar)

- When the faucet is turned on, the water flow is at least 2,2 U.S. gallons (8 liters) per minute.
- If the water pressure is higher, install a pressure reducing valve.

1. Connect water supply hose to the faucet.
Attention: Plastic threads of water connections must be hand-tightened ONLY. Do not tighten with a wrench or pliers
2. Turn on the faucet (faucets) fully.
3. Check for leaks at the connection points.

or:
Use a Y-connector to split a single cold water outlet in order to provide two water supply hose inlets.

A – cold water
B – hot water
(max. 60°C/140F)



Water drainage

Water drainage hose:

Attention: Do not kink or overextend the drain hose.

Height difference between installation area and outlet:

min. 23in. / 60cm - max. 39in. / 100cm

Drainage into a sink/bath tub:

Attention: Secure the drainage hose to prevent it from slipping out of the sink.

Attention: The plug must not be in the plug hole. When the water is being pumped out of the washing machine, check that the water drains away quickly enough. Do not insert the end of the drainage hose into the pumped off water! There is a risk that water will be drawn back into the washing machine!

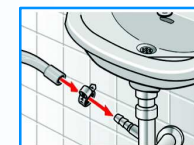
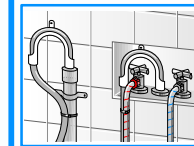
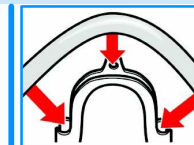
Drainage into a standpipe or in wall installation:

Use the U-bracket. Attach the U-bracket to the end of the hose and insert end of hose into standpipe or wall drain. Use a strap or cable tie connected to U-bracket to hold hose in place.

Drainage into a siphon:

Attention: Secure connection point with hose clip,

Ø 0.94" / 24mm - 1.57" / 40mm



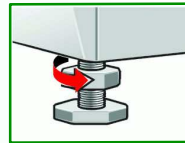
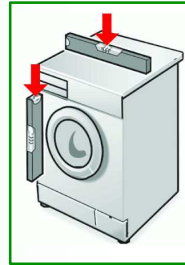
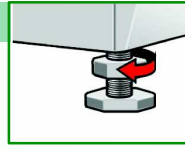
Leveling

 Strong odor, vibrations and "walking" can be the result of incorrect leveling!



Level the washer with a bubble level.

1. Loosen counter nut with wrench counterclockwise.
2. Change height by rotating the appliance feet.
Attention: All four appliance feet must be firmly on the floor. The washing machine must not wobble! Check alignment of the washing machine with a bubble level and, if required, correct.
3. Tighten the counter nut against the housing.
Hold the feet while doing this and do not change the height.
Attention: The counter nuts of all four washer feet must be screwed tightly against the housing!



Electrical connection

WARNING

- This appliance must be grounded. In the event of a malfunction or breakdown, grounding will reduce the risk of electrical shock by providing a path of least resistance for the electric current. This appliance features a cord with an equipment-grounding conductor and a grounding plug. The plug must be plugged into an appropriate outlet which has been properly installed and grounded in accordance with all local regulations and ordinances.
- Improper connection of the equipment grounding conductor may result in electric shock. Have the appliance checked by a qualified electrician or service technician if you are in doubt as to whether the washer has been properly grounded.
- Do not modify the plug provided with the appliance – if it will not fit in the outlet, have a proper outlet installed by a qualified electrician.
- The washing machine must only be connected to an individual branch circuit via a socket which has been properly installed and grounded.
- The household electrical voltage must correspond to the voltage specifications on the washing machine. Connection specifications as well as the required fuses are stipulated on the appliance rating plate.

Volts	Hertz	Amperes
208–240	60	10

Manufacturer (see Operating instructions)

1109 / 9000 484 651

Electrical connection

- Make sure that:
 - the power plug fits into the socket.
 - the wire size is sufficient.
 - the grounding system is properly installed.
- The power cord may be replaced by an electrician only. Replacement power cords are available from Customer Service. To reduce the risk of fire or electrical shock, DO NOT use an extension cord or an adapter to connect the washing machine to the power supply. Use of a Ground Fault Circuit Interrupter (GFCI) is recommended.
- Electrical plug:
 - do not insert/pull out of the socket with damp hands.
 - do not pull the plug out of the socket by tugging the power cord.
 - never pull out the plug while the appliance is operating.

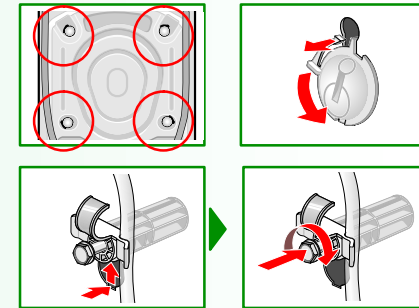
Transportation (such as when moving)

1. Before transporting the washing machine:


1. Turn off the tap.
2. Release the water pressure in the supply hose.
-> operating instructions, page 9; Filter in the water supply.
3. Drain any residual detergent solution.
-> operating instructions, page 9; Detergent solution pump.
4. Isolate the washing machine from the power supply.
5. Remove the hoses.

2. Preparing and installing the transportation protection devices:

1. Remove the covers.
2. Insert all 4 transportation protection devices and clamp the mains cable to the holders. Tighten the bolts.



 After transportation, the transportation protection devices **must** be removed. -> page 3.

 To prevent unused detergent from flowing straight into the drain during the next wash: Pour 1 quart (approx. 1 liter) of water into compartment II and start the **Drain** programme.

Customer service

- Before calling customer service, please check whether you can eliminate the fault yourself. -> *operating instructions*, What to do if ...
- User information explained in the instructions provided and troubleshooting issues found in the Operating Instructions "What to do if.." section may not be covered by warranty service. Please carefully rule any of these issues before calling for service,
- Contact information for customer service is found in list or via our website -> operating instruction. Please give customer service the product number (E-Nr.) and the production number (FD) of the appliance.



Product number Production number

You can find the rating plate which contains this information in the frame of the open washing machine door and in the thick bordered box on the appliance rating plate at the back of the appliance.

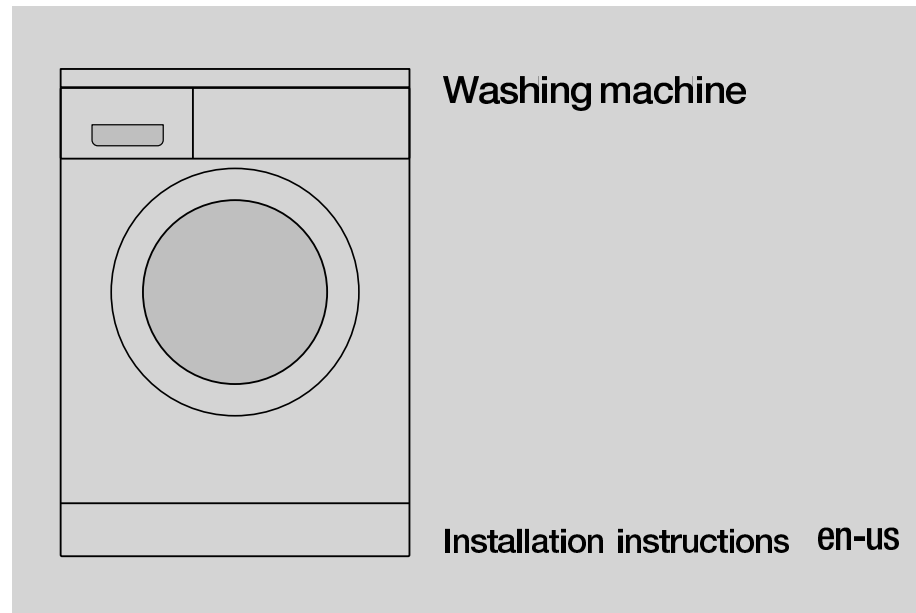
- Please help ensure faster service by providing the product number and production number to prevent unnecessary service calls. This will save you additional costs.

Technical specifications

Dimensions (width x depth x height)	23.6 x 23.2 x 33.2in. / 60 x 59 x 84,2cm
Weight	167,7lbs. (76kg) depending on model
Mains connection (according to model)	Nominal voltage 208–240V, 60Hz Nominal current 10A Nominal power 2000–2300W
Water pressure	14.5 to 120p.s.i. (1-10bar)

Under-counter / closet installation of the machine

- Under-counter / in-cabinet installation before connection to power supply.
- Installation in kitchen cabinet** (under-counter or in cabinet)
 - Cubicle width of 23.62in. / 60cm is required.
 - Only install the washing machine under a continuous counter top which is securely fastened to the neighboring cabinets.
 - If installing the washer in a closet, observe the minimum distances:
Side: 0in., rear: 3.35in. / 85mm, top: 0in., front: 3.54in. / 90mm
- Built-under appliance**
- Risk of electric shock!**
 - 23.62in. / 60cm cavity width required.
 - Instead of the appliance cover panel, have a technician install a sheet metal cover; order no. WMZ 2420.



Contents

Page

- Safety instructions 1
- Installation area 1
- Scope of delivery 2
- Hose and cable lengths 2
- Remove transportation safety devices 3
- Water connection 3/4
- Leveling 5
- Electrical connection 5/6
- Transportation (such as when moving) 6
- Customer service 7
- Technical specifications 7
- Under-counter / closet installation of the machine 7

WARNING – to reduce the risk of fire, electric shock, or injury to persons, read the *Important Safety instructions* before operating this appliance. Also follow the separate operating instructions. Retain all documents for subsequent use or for the next owner.