



Brief and handy: everything your dishwasher needs ...
Before using for the first time, read the operating instructions!

1

Adjusting the water softening

Ask your water supply company what the water hardness is and enter ...

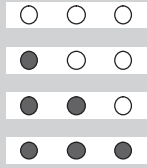
* only before the first wash or if the water hardness has been changed

Read off the correct setting for your water hardness

°dH	°fH	°Clarke	mmol/l	Set value on the appliance
0-6	0-11	0-8	0-1,1	0
7-16	12-29	9-20	1,2-2,9	1
17-21	30-37	21-26	3,0-3,7	2
22-35	38-62	27-44	3,8-6,2	3



End



Quickly sorted ...

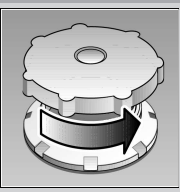
How to adjust the water softening system

- Rotate the programme button from the 12 o'clock position by one notch to the left.
- Switch on the main switch and hold down for at least 3 seconds. The salt refill indicator flashes, the "Check water supply" display and the programme sequence display light up (factory setting 2).
- Change the set value by rotating the programme selector (0-3).
- Switch off the main switch. The set value is saved.

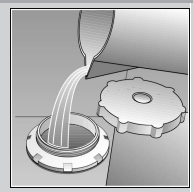
2

Filling the salt dispenser

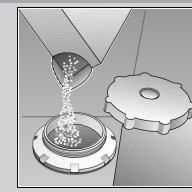
Dissolves limescale (not required for set value 0!)



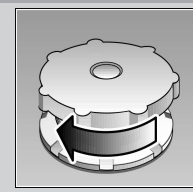
Unscrew the lid.



Only before using the dishwasher for the first time pour approx. 1 l / 1 1/4 pt water into the salt opening.



Pour in max. 1.5 kg / 3 lb 5 oz salt (never detergent!)

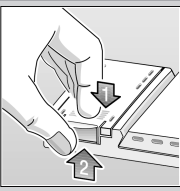


Screw on the lid. Switch on dishwasher immediately.

3

Adding rinse aid

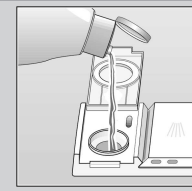
Everything is sparkling clean ...



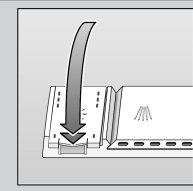
Press mark 1, lift up lid 2.



Refill whenever level indicator is light!



Pour in rinse aid.

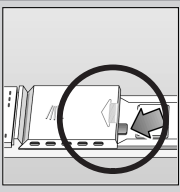


Close the lid. CLICK!

4

Adding detergent

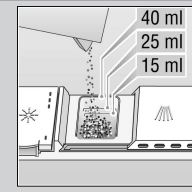
Very dirty dishes, a lot of detergent ...



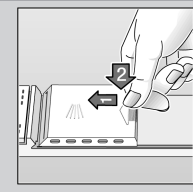
If required, open the lid (press the pin).



Warning, combination products are not suitable for all programmes, follow manufacturer's instructions.



Pour in detergent.



Push the lid shut, press. PLOP!

5

Turn on tap Water flows in ...

6

Select programme

Quick, economical or intensive ...

Overview of programmes

This overview indicates the max. possible number of programmes. The programmes which correspond to your appliance can be found on your appliance fascia.

The programme data are values measured in the laboratory in compliance with Standard EN 50242. Deviations in practice are possible.

	Intensive	Normal	Eco	Gentle	Quick	Prerinse
	70° 	65° 	50° 	40° 	35° 	
Duration in minutes	115	140	140	75	30	19
Power consumption in kWh	1,70	1,60	1,05	0,90	0,70	0,10
Water consumption in litres	21	19	14	15	10	4

8

Additional programmes **

Increased flexibility ...



Soak
...crockery in the lower basket, programme starts automatically, remember to add an extra 5g of cleaning agent when the door unlocks.



Time reduction/ time saving
...shortens the cleaning time, reduces the drying.



Upper basket cleaning
...Only the crockery in the upper basket is cleaned



Lower basket cleaning
...Only the crockery in the lower basket is cleaned

** on some models

7

Switch on the appliance Here we go ...

Close the door. Press the main switch, programme sequence display lights up.

9

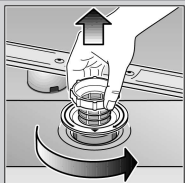
Switch off the appliance Everything o.k. ...

When the "end of programme" display lights up, switch off the main switch. Turn off the tap.

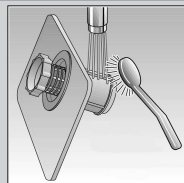
Maintenance and care

Filters

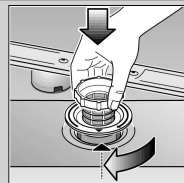
Check and, if required, clean:



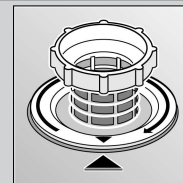
Rotate filter cylinder, remove filter system



Rinse under running water



Insert



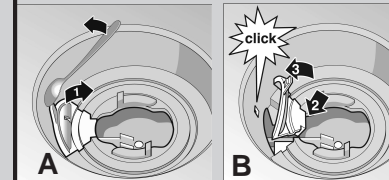
Screw on filter system.
NOTE MARK!

For perfect rinsing results

Waste water pump *

* some models

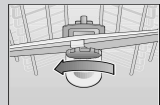
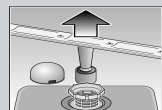
- Set main switch to OFF
- Scoop out any water
- Remove the filters
- Remove the cover (⇒A)
- Check the inner compartment for foreign objects and, if required, remove foreign objects
- Re-insert the cover (⇒B)
- Re-insert the filters and screw into position



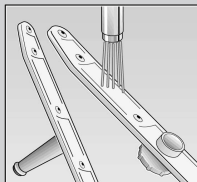
Spray arms

Remove blockages/ deposits

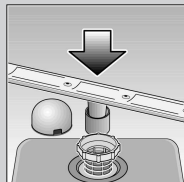
Pull up lower arm



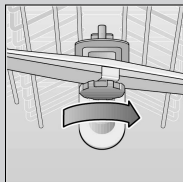
Unscrew upper arm



Clean under running water (if required, use a toothpick)



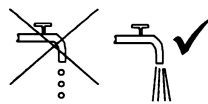
Insert lower arm

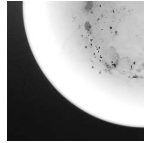


Screw on upper arm

Rectifying minor faults yourself ...

... as it is worth doing it yourself!

Fault	Possible causes	Remedial action
Residual water in the appliance	<ul style="list-style-type: none"> Waste water pump blocked The programme has not yet ended 	<ul style="list-style-type: none"> ▶ Clean waste-water pump (see above). ▶ Close the appliance, switch on and wait until the programme ends ("end of programme" display lights up) or terminate programme (see Terminating the programme).
Appliance is not running / stops Check water supply Display lights up	<ul style="list-style-type: none"> Supply fitting not open Supply hose kinked Supply fitting jammed or calcified 	<ul style="list-style-type: none"> ▶ Open supply fitting. ▶ Install supply hose without kinks. ▶ 1. Unscrew water connection. ▶ 2. Clean filter in the water connection. ▶ 3. Flow rate must be min. 9 l/min. when water supply is open. ▶ If the flow rate is less, replace the supply fitting.
Plastic / utensils discoloured	<ul style="list-style-type: none"> Too little detergent Discoloration caused by food colourings (tomato sauce) 	<ul style="list-style-type: none"> ▶ Follow manufacturer's instructions (detergent). ▶ Discoloration is harmless; subsequent rinse cycles will cause it to fade.

Fault	Possible causes	Remedial action
Utensils are not clean Sand or gritty residue on the utensils 	<ul style="list-style-type: none"> Utensils are situated close together or one above the other Too little detergent Unsuitable programme selected Spray arm nozzles blocked Filters dirty, not seated firmly Spray arms blocked 	<ul style="list-style-type: none"> ▶ Separate the utensils, prevent contact points. ▶ Follow manufacturer's instructions (detergent). ▶ Select a more intensive programme. ▶ Clean the spray arms (see above). ▶ Clean the filters (see above). ▶ Arrange the utensils so that the spray arms can rotate freely.
Stains and streaks	Rinse-aid dosage too high / too low	<ul style="list-style-type: none"> ▶ Streaks: reduce dosage. ▶ Water or limescale stains: increase dosage.
Milky film on the utensils (removable)	<ul style="list-style-type: none"> Water softening system incorrectly set; No salt 	<ul style="list-style-type: none"> ▶ Correctly set water softening system. ▶ Refill with salt.
Milky film, glasses cloudy / dull (not removable)	Glasses not dishwasher-proof.	<ul style="list-style-type: none"> ▶ Use dishwasher-proof glasses. ▶ Use a detergent suitable for glasses.
Rust on the cutlery	<ul style="list-style-type: none"> Cutlery not rust-resistant Hard knife blades are more susceptible Extraneous rust 	<ul style="list-style-type: none"> ▶ Use dishwasher-proof cutlery. ▶ Never wash rusting parts in the appliance.

More information can be found in the operating instructions

Interrupting the programme...

Terminating the programme ...

- Switch off the main switch.
- To continue, close the door. Switch on the main switch again.

- While the programme is running, rotate the programme selector to the Reset pos.
- The programme sequence lasts approx. 1 min.
- When the programme has run, switch off the main switch.

Loading the dishwasher

Dishwasher-proof utensils (not soiled with ash, wax, lubricating grease, ink or adhesive labels; remove large remnants of jam, milk products and food according to the operating instructions and check that the spray arms can rotate freely).