



Connect your appliance – to the future.
Quick-start guide



The future begins now in your home! We are glad you have chosen Home Connect *

Congratulations on your fully automatic coffee machine of tomorrow, which will today make your everyday life easier and more agreeable.

To safely operate the appliance with the Home Connect function, please observe the safety instructions in the instruction manual for the appliance.

More convenient.

Home Connect lets you control your household appliances whenever you want, wherever you want. Simply and intuitively using a smartphone or tablet. This saves you bother and waiting around, and you have more time for the things that are truly important to you.

More straightforward.

Using the cleverly designed touchscreen in the app, you can adjust operating settings such as audible signals or even individual programmes. It's even simpler and more precise than on the appliance itself. Plus you have direct access to all data, operating manuals and numerous instructional videos.

More connected.

Let yourself be inspired! Discover numerous extras that have been tailor-made just for your appliances: recipe collections, tips on using your appliances and much more. Compatible accessories can be ordered at any time with just a few clicks.

* The availability of the Home Connect function depends on the availability of Home Connect services in your country.

Home Connect services are not available in every country. You can find more information on this at www.home-connect.cn.



What do you need to connect your appliance to Home Connect?

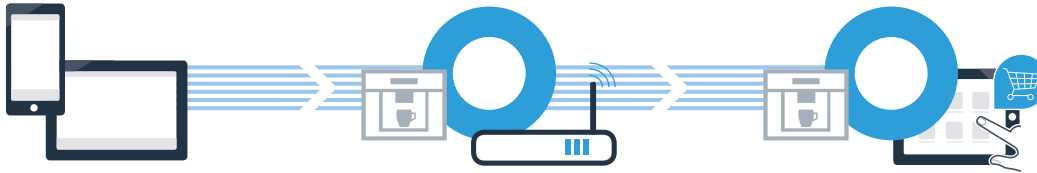
- A smartphone or tablet equipped with the latest version of the relevant operating system.
- A home network signal (Wi-Fi) at the location where the appliance is fitted.

Name and password for your home network (Wi-Fi):

Network name (SSID): _____

Password (key): _____

Three steps to make your daily routine easier:



1. Set up app

2. Connect appliance
to Wi-Fi

3. Connect appliance
to app

Step 1: Installing the Home Connect app



A On your smartphone or tablet, go to the App Store (Apple devices) or to the Google Play Store (Android devices).

B Enter "**Home Connect**" in the store's search field.

C Select the Home Connect app and install it on your smartphone or tablet.

D Start the app and create your Home Connect login details. The app will guide you through the registration process. Don't forget to make a note of your e-mail address and password.



Home Connect login details:

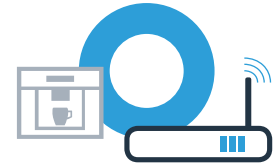
E-mail: _____

Password: _____



APP的下载状态请在www.home-connect.cn中查询

Step 2 (initial set-up): Connecting your fully automatic coffee machine to your home network (Wi-Fi)

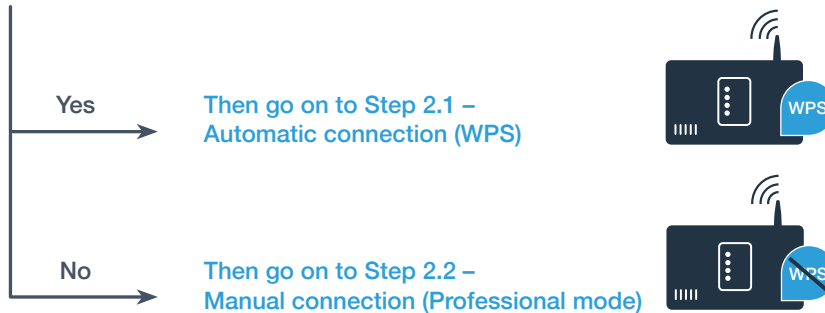


A Connect your fully automatic coffee machine and switch it on.



B Check whether your home network router has a WPS function (automatic connection). Some routers have a WPS button, for example. (You will find information about this in the manual for your router.)

C Does your router have a WPS function (automatic connection)?



Step 2.1: Automatic connection of your fully automatic coffee machine to your home network (Wi-Fi)



A On initial set-up of your fully automatic coffee machine select "**Home Connect**".



B Switch on "**Wi-Fi**" on your fully automatic coffee machine.

C Then select "**Connect network**".



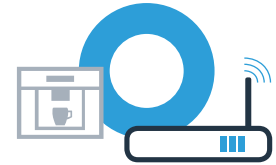
D To start connecting automatically, press the button "**Connect automatically**".



E Activate the WPS function on your home network router within the next 2 minutes. Some routers have a WPS/Wi-Fi button, for example. You will find information about this in the manual for your router.



Step 2.1: Automatic connection of your fully automatic coffee machine to your home network (Wi-Fi)

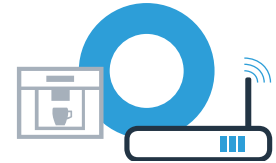


- F** After a few seconds the display of your fully automatic coffee machine shows **"Network connection successful"**.
Now go on to **Step 3**.



The display shows the message: **"Network connection failed"**.
The connection could not be established within 2 minutes. Check whether your fully automatic coffee machine is within range of your home network (Wi-Fi) and repeat the process if necessary or refer to Step 2.2 to connect manually.

Step 2.2: Manual connection of your fully automatic coffee machine to your home network (Wi-Fi)



During manual connection, your fully automatic coffee machine sets up its own Wi-Fi network (soft access point) which you can log into using your smartphone or tablet.

A On initial set-up of your fully automatic coffee machine select **"Home Connect"**.



B Switch on **"Wi-Fi"** on your fully automatic coffee machine.

C Then select **"Connect network"**.



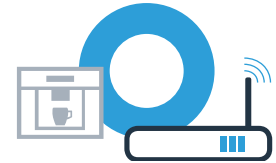
D To start connecting manually, select **"Manually connect"**.



E The display now shows **"Network connection manual"**.
Your fully automatic coffee machine has now set up its own Wi-Fi network (SSID) "HomeConnect", which you can access using your smartphone or tablet.



Step 2.2: Manual connection of your fully automatic coffee machine to your home network (Wi-Fi)



- F** To find this, go to the general settings menu on your smartphone or tablet (mobile device) and call up the Wi-Fi settings.
- G** Connect your smartphone or your tablet to the **"HomeConnect"** Wi-Fi network (SSID) (Wi-Fi password [key] is also "HomeConnect"). The connection process may take up to 60 seconds!
- H** Once successfully connected, open the Home Connect app on your smartphone or tablet.
- I** The app will now take a few seconds to search for your fully automatic coffee machine. If you have not yet been asked for the network name (SSID) and password (key) for your home network (Wi-Fi), you will be prompted to enter them into the corresponding fields as soon as the fully automatic coffee machine has been found.
- J** Then press **"Transfer to household appliance"**.
- K** The display of your fully automatic coffee machine now shows **"Network connection successful"**.
Now go on to Step 3.



Step 3: Connecting your fully automatic coffee machine to the Home Connect app



A Select **"Connect with app"** on your fully automatic coffee machine.



B As soon as your fully automatic coffee machine is shown in the Home Connect app, you have 2 minutes to add it to your smartphone or tablet.



C If your fully automatic coffee machine is not automatically displayed, in the app press **"Connect household appliance"** or **"Search for household appliances"**.



D Follow the final instructions in the app to confirm the connection and complete the process.

Step 3: Connecting your fully automatic coffee machine to the Home Connect app



- E** Following successful login, select **"Remote start Off"** on your fully automatic coffee machine. A warning now appears. As soon as you have acknowledged it, remote start will be activated.
- F** The text field **"Back Settings"** can be used to complete this process for Home Connect and to return to initial set-up of your fully automatic coffee machine.



You have now successfully connected your fully automatic coffee machine. You can now benefit from all the advantages of the Home Connect app!



"Connection failed" appears on the display panel:
Ensure that your smartphone or tablet is within your home network (Wi-Fi).
Repeat the entire process described in Step 3.

Home Connect: simply heading into
a networked future with strong partners.



还有疑问？
请访问 www.home-connect.cn
或拨打家居互联服务热线
400 828 9898



家居互联是博西华家用电器服务江苏有限公司提供的一项软件服务

Apple App Store及iOS为Apple Inc.品牌
Android为Google Inc.品牌
WiFi为WiFi Alliance品牌

en-zh (9702) 8001059054