




TES 515..  **BOSCH**

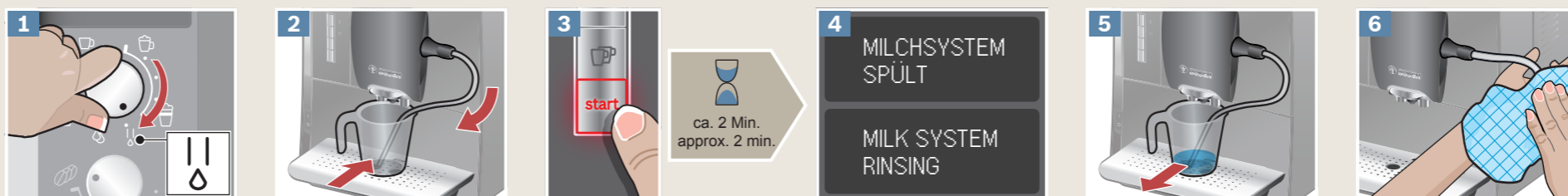
de Kurzanleitung  
en Quick reference guide

Beispiel Zubereitung  
**Cappuccino**  
Sample Preparation  
**Cappuccino**



Service-Programm  
**Kurzspülen  
Milchsystem**

Service Program  
**Short rinse  
milk system**



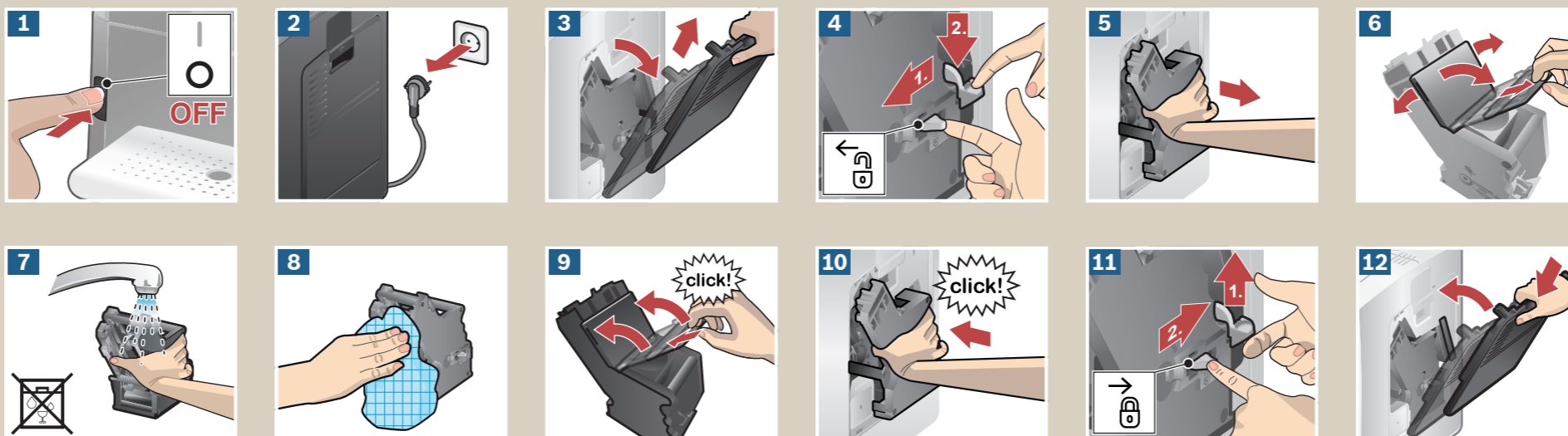
Manuelles Reinigen  
**Milchsystem**

Manual clean  
**Milk System**



Reinigen  
**Brüheinheit**

Clean  
**Brewing unit**



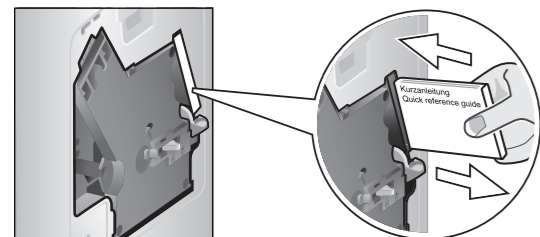
Bitte unbedingt die Sicherheits-  
hinweise in der Gebrauchsanleitung  
lesen und beachten.

Please read the safety information in  
the instruction manual carefully.



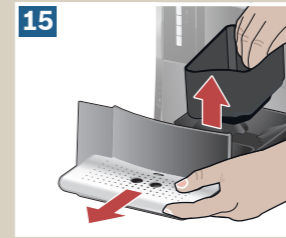
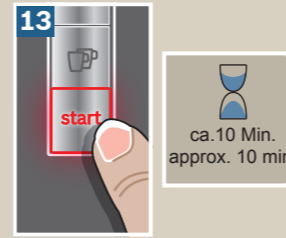
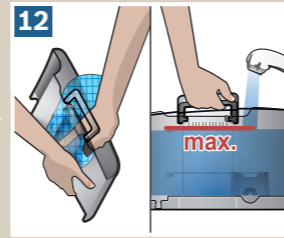
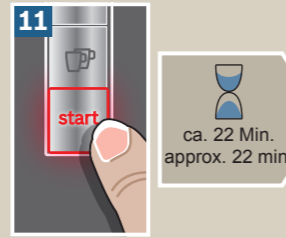
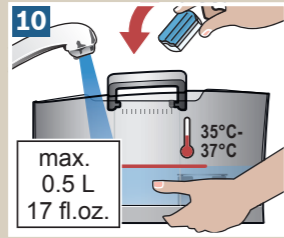
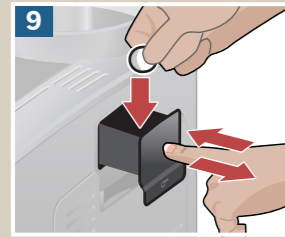
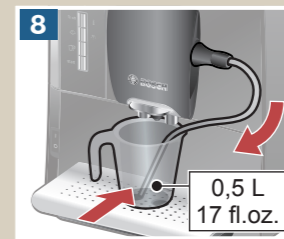
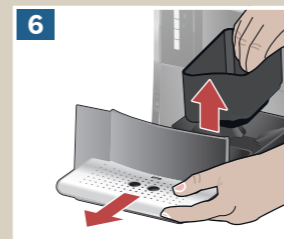
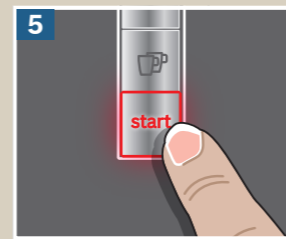
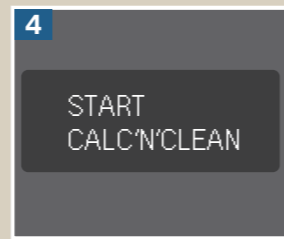
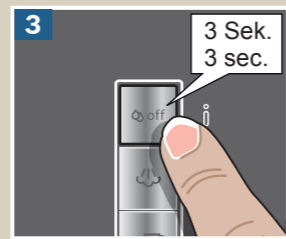
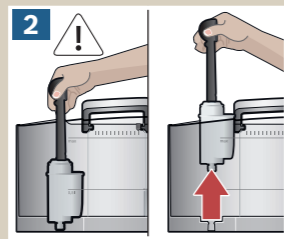
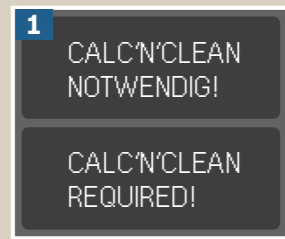
Aufbewahrungsfach für  
Kurzanleitung

Storage compartment for  
quick reference guide



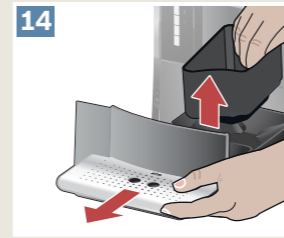
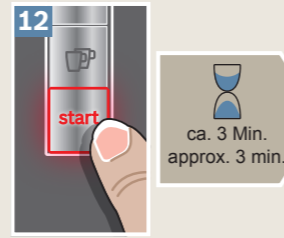
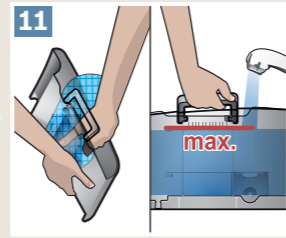
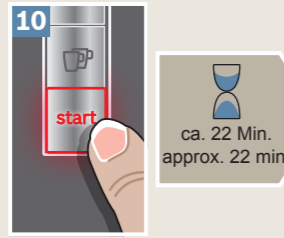
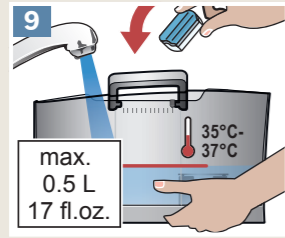
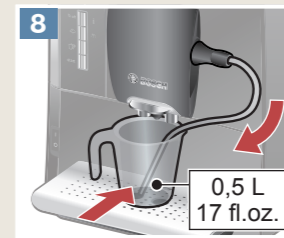
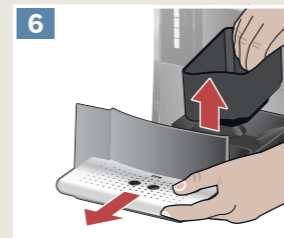
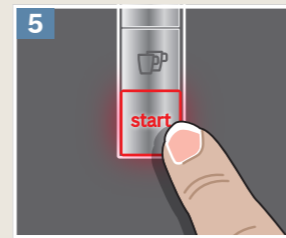
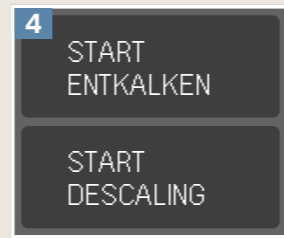
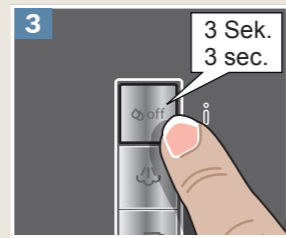
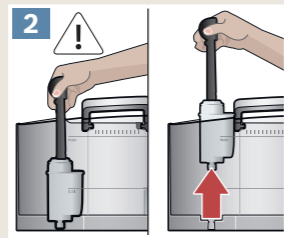
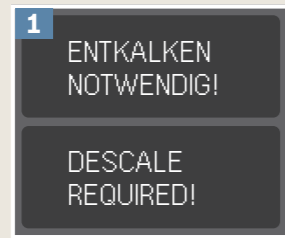
Service-Programm  
**CALC'N'CLEAN**

Service Program  
**CALC'N'CLEAN**



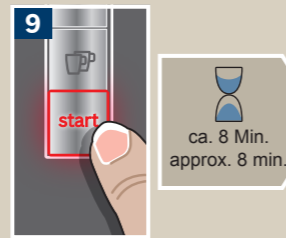
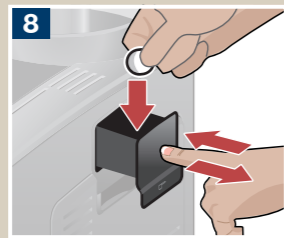
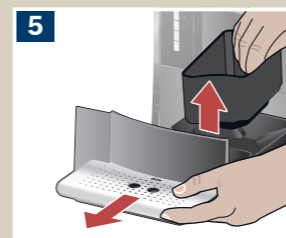
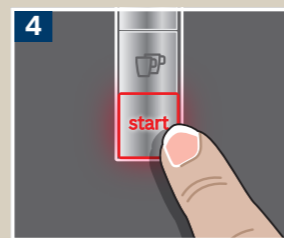
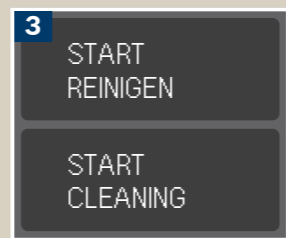
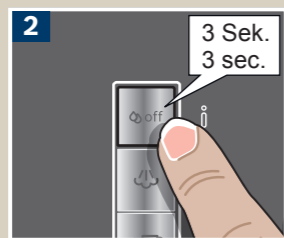
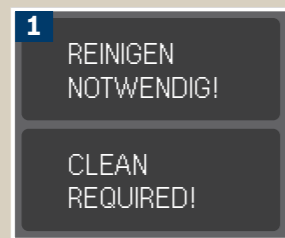
Service-Programm  
**Entkalken**

Service Program  
**Descale**



Service-Programm  
**Reinigen**

Service Program  
**Clean**



Robert Bosch Hausgeräte GmbH  
Carl-Wery-Straße 34  
81739 München, GERMANY  
[www.bosch-home.com](http://www.bosch-home.com)



8001037228

960422