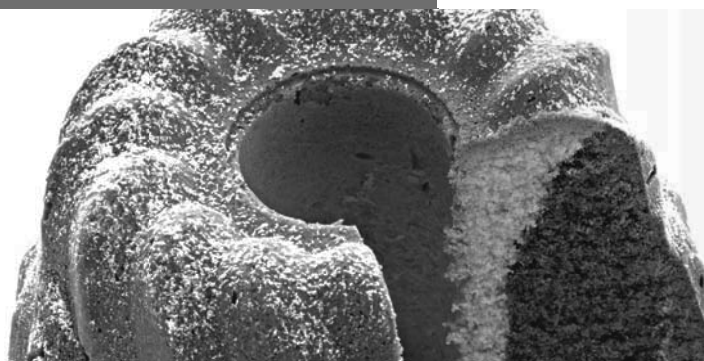


Register your new Bosch now:
www.bosch-home.com/welcome



MUMXL20TAU



BOSCH

en Operating instructions

en

***Congratulations on the purchase of your new BOSCH appliance.
In doing so, you have opted for a modern, high-quality domestic appliance.
You can find further information about our products on our web page.***

Contents

For your safety	2
Overview	5
Operating positions	5
Operation	6
Cleaning and servicing	8
Troubleshooting	9
Application examples	9
Optional accessories	12
Instructions on disposal	14
Warranty conditions	14

For your safety

Before use, read these instructions carefully in order to become familiar with important safety and operating instructions for this appliance.

If the instructions for correct use of the appliance are not observed, the manufacturer's liability for any resulting damage will be excluded. This appliance is designed for processing normal household quantities in the home or similar quantities in non-industrial applications.

Non-industrial applications include e.g. use in employee kitchens in shops, offices, agricultural and other commercial businesses, as well as use by guests in boarding houses, small hotels and similar dwellings. Use the appliance for processing normal quantities of food for domestic use. Do not exceed permitted maximum quantities (see "Application examples").

This appliance is suitable for mixing, kneading, beating and cutting food. It must not be used for processing other objects or substances. Other applications are possible if the accessories approved by the manufacturer are used.

Use the appliance with original accessories only.

When using the accessories, follow the enclosed operating instructions. Please keep the operating instructions in a safe place.

If passing on the appliance to a third party, always include the operating instructions.

General safety instructions

Electric shock risk

The appliance must not be used by children.

The appliance and its power cord must be kept away from children.

Appliances can be used by persons with reduced physical, sensory or mental capabilities or lack of experience and knowledge if they have been given supervision or instruction concerning use of the appliance in a safe way and if they understand the hazards involved.

Children shall not play with the appliance.

Switch off the appliance and disconnect from supply before changing accessories or approaching parts that move in use.
 Connect and operate the appliance only in accordance with the specifications on the rating plate. Only use indoors. Do not use the appliance if the power cord and/or appliance are damaged.
 Always disconnect the appliance from the supply if it is left unattended and before assembling, disassembling or cleaning.
 Do not place the power cord over sharp edges or hot surfaces.
 To prevent injury, a damaged power cord must be replaced by the manufacturer or his customer service or a similarly qualified person.
 Only our customer service may repair the appliance.

▲ Safety instructions for this appliance

Risk of injury

Risk of electric shock!

Do not insert mains plug until all preparations for working with the appliance are complete.

Never immerse the base unit in liquid or hold under running water.

Do not use a steam cleaner.

Do not adjust swivel multi-function arm while the appliance is switched on. Wait until the drive has come to a standstill.

Do not change tool/accessory until the drive is at a standstill – when the appliance is switched off, the drive continues running briefly.

Use only the rotary switch to switch the appliance on or off.

When the appliance is not in use, pull out the mains plug.

Before eliminating a fault, pull out the mains plug.

Risk of injury from the rotating tools!

While the appliance is operating, never place fingers in the mixing bowl. Attach the cover (12) before operating the appliance!

Keep hands clear of rotating parts.

Do not change tools until the drive has come to a standstill – when the appliance is switched off, the drive continues running briefly and stops in the tool change position/„Easy fill“-position.

Do not move multi-function arm until the tool is at a standstill.

Do not switch on the appliance until the blender has been screwed in all the way and the tool drive cover (7) has been attached.

Cover unused drives with drive covers.

Risk of injury from sharp blades!

Do not touch blender blades with bare hands. Clean them with a brush.

Risk of injury from sharp blades/rotating drive!

Never place fingers in the attached blender! Do not remove/attach the blender until the drive is at a standstill! Operate the assembled blender only and with the lid attached.

en

Risk of scalding!

If processing hot liquids, steam escapes through the funnel in the lid. Add a max. 0.75 litres of hot or frothing liquid.

Important!

Use the appliance with original accessories only.

When using the accessories, follow the enclosed operating instructions. Attach and use only one tool or accessory.

▲ Explanation of the symbols on the appliance or accessory

Follow the instructions in the operating instructions.



Caution! Rotating blades.



Caution! Rotating tools.
Do not place fingers in the feed tube.

▲ Safety systems**Start lock-out**

See “Overview of the operating positions” table.

In **pos. 1** the appliance cannot be switched on. The appliance can be switched on in **pos. 2–4** only:

- when the bowl has been inserted and rotated as far as possible or
- the tool drive cover (7) has been attached.

In **Pos. 5** the appliance can only be switched on when the tool drive cover (7) has been attached.

The blender must be screwed in all the way.

In **pos. 6** the appliance cannot be switched on unless the mincer and adapter have been attached correctly (see mincer operating instructions).

Restart lock-out

If the power is interrupted, the appliance remains switched on but the motor does not start running again when the power is restored.

To restart the appliance, turn the rotary switch (3) to **0/off**, then switch on the required setting.

Overload protection

If the motor switches itself off while the appliance is being used, the overload protection feature has been activated.

Possible causes:

- very large amounts of ingredients,
- appliance operated too long.

If a safety system is activated, see “Troubleshooting”.

The operating instructions describe several models, see also overview of models (Fig. **■**).

Overview

Please fold out the illustrated pages.

Fig. A

Base unit

1 Release button

2 Multi-function arm

"Easy Armlift" – supports the simple and effortless operation of the multi-function arm (see "Operating positions").

3 Rotary switch

When the appliance has been switched off (0/off position), it automatically runs to the optimum position for changing the tools (tool change position).

This position also facilitates filling the bowl with ingredients, as no ingredients can stick to the tools ("Easy fill" position).

0/off = Stop

M = Instantaneous switching at maximum speed, hold switch for required blending duration.

Settings 1–7, Operating speed:

1 = low speed – slow,

7 = high speed – fast.

4 Drive cover

To remove the drive cover, press on the front area and remove cover.

5 Drive for

- continuous-feed shredder *,
- citrus press * and
- grain mill *.

When not in use, attach the drive cover.

6 Drive for tools (stirrer, whisk, kneading hook) and mincer *

7 Drive cover

8 Drive for blender

When not in use, attach the blender drive cover.

9 Blender drive cover

10 Cord store

Cord store or automatic cord winder (depending on model)

Bowl with accessories

11 Stainless steel stirring bowl

12 Lid

13 Funnel

Tools

14 "Absolute" stirrer

15 Solid metal whisk

16 Kneading hook „High performance“ with dough deflector

Blender *

17 Blender holder with blade

18 Blender jug (glass)

19 Lid with feed tube

20 Funnel

* If an accessory is not included in the product package, it can be purchased via the trade or customer service.

Operating positions

Warning!

Before operating the appliance, attach the tool/accessory to the correct drive and in the correct position and place in the operating position according to this table. The multi-function arm must be engaged in each operating position.



Note:

The multi-function arm features the "Easy Armlift" function which supports the simple and effortless operation of the multi-function arm.

Setting the operating position

Fig. B





- Press release button and move multi-function arm.
- Support movement with your hand.
- Move multi-function arm until it engages in the required position.

Overview of the operating positions

Position	Drive	Tool/Accessory	Operating speed
1		*	–
2	6		1–5
			1–7
			1–3

* Insert/remove whisk, stirrer or kneading hook. Add large quantities of ingredients.

en

Position	Drive	Tool/ Accessory	Operating speed
3	5		3–7
4	5		3–5
5	8		5–7
6	6		5–7

Operation



Risk of injury!

Do not insert mains plug until all preparations for working with the appliance are complete.

Warning!

Do not operate the appliance without an accessory/tool in the operating position. Do not operate the appliance empty. Do not expose appliance or accessories to heat sources. Parts are not microwave-safe.

- Before operating the appliance and accessories for the first time, clean thoroughly; see "Cleaning and servicing".

Preparation

- Place the base unit on a smooth, clean surface.
- Prepare cable (Fig. 9).
 - Appliances with cord store:**
Pull out cable to the required length.
 - Appliances with automatic cord winder:**
Pull out the cord in one go to the required length (max. 100 cm) and slowly release; the cord is locked.
Reducing the cord length:
Pull gently on the cord and allow it to roll up to the required length.
Then gently pull the cord again and slowly release; the cable is locked.

Warning!

Do not twist the cord when inserting it. If the appliance features an automatic cord winder, do not insert the cord manually. If the cord jams, pull out the cord all the way and then allow it to wind up.

Bowl and tools



Risk of injury from rotating tools

While the appliance is operating, never place fingers in the mixing bowl. Attach the cover (12) before operating the appliance! Keep hands clear of rotating parts. Do not change tools until the drive has come to a standstill – when the appliance is switched off, the drive continues running briefly and stops in the tool change position. Do not move multi-function arm until the tool is at a standstill. For safety reasons the appliance cannot be operated in Pos. 2–4 until the bowl has been inserted and turned all the way or the tool drive cover (7) has been attached.

Warning!

Use bowl with this appliance only. Insert tools firmly into the drive until they lock into position.

"Absolute" stirrer (14)

for stirring dough, e.g. sponge mixture or mousse, and for folding in beaten egg whites or cream.



Solid metal whisk (15)

for whisking egg whites, cream and light dough, e.g. sponge mixture.



Kneading hook „High performance“ with dough deflector (16)

for kneading heavy dough and for folding in ingredients which are not to be cut (e.g. raisins, chocolate chips).



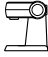

Important information concerning the use of the whisk Fig. 10

The whisk should just touch the bottom of the bowl in order to mix the ingredients thoroughly. The whisk can be positioned higher for large quantities.

Adjust the height of the whisk as follows:


- Remove mains plug.
- Press release button and move multi-function arm to position 1.
- Insert the whisk into the drive until the whisk locks into position.
- Hold whisk in place and loosen nut clockwise using enclosed key (on the base of the appliance).



- Set the whisk to the optimum height by rotating the whisk:
 - Turn clockwise: Raise
 - Turn anti-clockwise: Lower
- Press release button and move multi-function arm to position 2.  Check the height of the whisk and, if required, correct.
- When the height has been set correctly, press the release button and move the multi-function arm to position 1. 
- Hold whisk in place and tighten nut anti-clockwise using enclosed key.

Working with the bowl and the tools


Fig. 13

- Press release button and move multi-function arm to position 1. 
- Cover unused drives with drive covers.
- Insert the bowl:
 - Tilt the bowl forwards and then set it down.
 - Turn anti-clockwise until it locks into place.
- Depending on the process task, insert stirrer, whisk or kneading hook firmly into the drive until it locks into position.

Note:

If using the kneading hook, first insert dough deflector, then the kneading hook (Fig. 13-4b).

Note shape and position of the parts.

- Put the ingredients to be processed into the bowl.
- Press release button and move multi-function arm to position 2. 
- Attach the cover.
- Insert the mains plug.
- Set the rotary switch to the desired setting.


Our recommendation:

- Stirrer:
First mix at setting 1–2, then setting 3–7 as required
- Whisk:
setting 7, mix in at setting 1
- Kneading hook:
first stir in at setting 1, knead at setting 3


Adding more ingredients

- Switch off the appliance with the rotary switch.
- Attach funnel (Fig. 13-7).
- Top up ingredients through the funnel.

or

- Remove lid.
- Press release button and move multi-function arm to position 1. 
- Add ingredients.

After using the appliance

- Switch off the appliance with the rotary switch.
- Remove mains plug.
- Remove lid.
- Press release button and move multi-function arm to position 1. 
- Take the tool out of the drive.
- Remove the bowl.
- Clean all parts, see "Cleaning and servicing".

Blender



Risk of injury from sharp blades/rotating drive!

Never place fingers in the attached blender! Do not remove/attach the blender until the drive is at a standstill! Do not switch on the appliance until the blender has been screwed in all the way and the tool drive cover (7) has been attached.



Risk of scalding!

If processing hot liquids, steam escapes through the funnel in the lid. Add a max. 0,75 litres of hot or frothing liquid.

Warning!

Operate the blender in the indicated operating position only. Operate the assembled blender only and with the lid attached. Lid must be locked correctly. Do not operate blender when empty.

Preparation

Fig. 14

Warning!

Never assemble the blender without the seal on the blender holder.

Putting the blender together:

- Insert blender holder with seal into the blender jug, ensuring that the line is under the arrow.
- Attach blender holder by rotating it as far as possible to the right.

en

Working with the blender

- Press release button and move multi-function arm to position 5.
- Cover unused drives with drive covers.
- Remove the blender drive cover.
- Attach blender jug (mark on the handle on mark on the base unit) and turn all the way in an anti-clockwise direction.
- Add ingredients.
 - Maximum amount of liquid ingredients = 1.75 litres;
 - Maximum amount of frothing or hot liquids = 0.75 litres;
 - Optimum processing amount of solid ingredients = 100 grams.
- Attach the cover and turn anti-clockwise all the way into the blender handle. The cover must be locked in position.
- Set the rotary switch to the desired setting.

Fig. 14

**Adding more ingredients (Fig. 14-8)**

- Switch off the appliance with the rotary switch.
 - Remove the lid and add ingredients
- or
- remove the funnel and gradually add solid ingredients through the refill opening
- or
- pour liquid ingredients through the funnel.

**Important information**

When processing liquids/liquid ingredients, slowly increase the speed of the appliance in stages to prevent the food from shooting out.

After using the appliance

- Switch off the appliance with the rotary switch. Wait until the blade has come to a standstill.
- Remove mains plug.
- Rotate the blender in a clockwise direction and remove.
- Take the lid off the blender jug. Rotate the lid in an anti-clockwise direction and remove.
- Clean all parts, see "Cleaning and servicing".

Tip: It is recommended to clean the blender immediately after use.

Cleaning and servicing**Important information**

The appliance requires no maintenance. Thorough cleaning protects the appliance from damage and keeps it functional.

Warning!

Do not use abrasive cleaning agents. Surfaces may be damaged.

Cleaning the base unit**Risk of electric shock!**

Never immerse the base unit in water or place under running water. Do not use a steam cleaner.

- Remove mains plug.
- Wipe the base unit and drive cover with a damp cloth. If required, use a little detergent.
- Then dry the base unit.

Cleaning the bowl and tools

The bowl and tools are dishwasher-proof. Do not wedge plastic parts in the dishwasher, as they could be permanently deformed during the washing process!

Cleaning the blender**Risk of injury from sharp blades!**

Do not touch blender blades with bare hands. Clean them with a brush.

Warning!

Do not wash blender holder in the dishwasher or leave it in water.

- Clean blender holder under running water.
- Lid, funnel and blender jug can be washed in the dishwasher.

Note:

Lid can be disassembled for cleaning.

Fig. 15

- Pull funnel upwards out of the lid.
- Press insert downwards out of the lid.

Tip: After processing liquids, it is often sufficient to clean the blender without removing it from the appliance. Pour a little water and washing-up liquid into the attached blender. Switch on the blender for several seconds (setting **M**). Pour out the water and rinse out the blender with clear water.

Troubleshooting



Risk of injury!

Before eliminating a fault, pull out the mains plug.

The multi-function arm must be engaged in each operating position.

Initially try to eliminate the problem which has occurred with the help of the following information.

Fault

Appliance does not start.

Remedial action

- Check the power supply.
- Check the mains plug.
- Check multi-function arm.
Correct position? Engaged?
- Screw on bowl all the way.
- Attach drive cover to unused drives.
- The safety lock is active.
Switch appliance to **0/off** and then back to the required setting.

Fault

Appliance switches off during use.
The overload protection feature has been activated. Too much food was processed at one time.

Remedial action

- Switch off the appliance and pull out the mains plug.
- Leave the appliance to cool down for 15 minutes in order to deactivate the overload protection.
- Reduce processing quantity.
Do not exceed permitted maximum quantities (see "Application examples").
- Switch on appliance again.
If the motor still does not start, leave the appliance to cool down for a longer period (at least 1 hour).

Fault

While the drive was running, the release button was inadvertently pressed.

The multi-function arm moves up.

The drive switches off, but does not stop in the tool change position.

Remedial action

- Set the rotary switch to **0/off**.
- Move multi-function arm to position **2**.
- Switch on appliance (setting **1**).
- Switch off appliance again.
Tool stops in tool change position.



Fault

Blender does not start working or stops during use, the drive is "humming".

Blade is blocked.

Remedial action

- Switch off the appliance and pull out the mains plug.
- Detach the blender and remove the obstruction.
- Re-attach the blender.
- Switch on the appliance.



Important information

If the fault cannot be eliminated, please contact customer service.

Application examples

Whipped cream

200 g–1500 g

- Whip cream with the whisk for 1½ to 4 minutes at setting 7 (depending on the quantity and properties of the cream).
- Follow instructions in the section "Important information for using the whisk" for adjusting the appliance to the amounts to be processed!



Egg white

2 to 12 egg whites

- Beat egg white with the whisk for 2 to 6 minutes at setting 7.
- Follow instructions in the section "Important information for using the whisk" for adjusting the appliance to the amounts to be processed!



en

Sponge mixture*Basic recipe*

3 eggs
 3–4 tbs. hot water
 150 g sugar
 1 packet of vanilla sugar
 150 g flour
 50 g cornflour
 Baking powder if required

- Beat the ingredients (except flour and cornflour) with the whisk for approx. 4–6 minutes at setting 7 until frothy.
- Rotate switch to setting 1 and spoon in the sifted flour and cornflour within approx. ½ to 1 minute.

Maximum quantity: 2 x basic recipe**Cake mixture***Basic recipe*

3–4 eggs
 200–250 g sugar
 1 pinch of salt
 1 packet of vanilla sugar or peel from ½ lemon
 200–250 g butter or margarine (room temperature)
 500 g flour
 1 packet of baking powder
 150 ml of milk

- Mix all ingredients with the stirrer for approx. ½ minute at setting 1, then for approx. 3–4 minutes at setting 5.

Maximum quantity: 2½ x basic recipe**Short pastry***Basic recipe*

125 g butter (room temperature)
 100–125 g sugar
 1 egg
 1 pinch of salt
 A little lemon peel or vanilla sugar
 250 g flour
 Baking powder if required

- Mix all ingredients with the stirrer for approx. ½ minute at setting 1, then for approx. 2–3 minutes at setting 5.

From 500 g flour:

- Knead the ingredients with the kneading hook for approx. ½ minute at setting 1, then for approx. 3–4 minutes at setting 3.

Maximum quantity: 4 x basic recipe**Yeast dough***Basic recipe*

500 g flour
 1 egg
 80 g fat (room temperature)
 80 g sugar
 200–250 ml lukewarm milk
 25 g fresh yeast or 1 packet of dried yeast
 Peel of ½ lemon
 1 pinch of salt

- Mix all ingredients with the kneading hook for approx. ½ minute at setting 1, then for approx. 3–6 minutes at setting 3.

Maximum quantity: 3 x basic recipe**Pasta dough***Basic recipe*

500 g flour
 250 g eggs (approx. 5x)
 2–3 tbs. (20–30 g) cold water as required

- Process all ingredients for approx. 3–5 minutes at setting 3 until a dough forms.

Maximum quantity: 1,5 x basic recipe**Important information**

When processing this dough with the original accessory for this appliance, use the accessory MUZ8NV1/2/3 only. The accessory MUZ8NS1 is **not** suitable.

Wholemeal mixed wheat bread*Basic recipe*

325 g freshly ground wholemeal flour
 325 g white flour Type 405
 100 g rye flour Type 630
 75 g liquid fermented dough
 ½ tbs. caraway
 ½ tbs. bread seasoning
 ½ tbs salt
 1½ packets of dry yeast
 450–500 ml warm water

- Process all ingredients into a dough for approx. ½ minute at setting 1, then for approx. 3 minutes at setting 3.
- Leave the dough to prove until it is double the size and knead again for approx. 1 min. at setting 3.
- Place dough in a greased loaf tin and leave to prove again, then bake.

Tip: Instead of freshly ground wholemeal flour, freshly ground spelt flour can be used.

Maximum quantity: 2 x basic recipe

Mayonnaise

Note: Mayonnaise can be prepared in the blender with whole eggs (egg white and egg yolk) only.

Basic recipe:

1 egg

1 heaped tsp. mustard

1 tbs. vinegar or lemon juice

1 pinch of salt

1 pinch of sugar

200–250 ml oil

Ingredients must be at the same temperature.

- Mix ingredients (except oil) for several seconds at setting 3.
- Switch the appliance to the highest setting, pour the oil through the funnel and blend until the mayonnaise emulsifies.

Maximum quantity: Double the quantity of the basic recipe.

Hot chocolate

50–75 g cooled cooking chocolate

½ l hot milk

Whipped cream and grated chocolate as required

- Cut cooking chocolate into pieces (approx. 1 cm) and chop up completely in the blender on setting 7.
- Switch off appliance and add the milk through the funnel. Mix for approx. 30 seconds at setting 7.
- Pour the hot chocolate into glasses and serve with whipped cream and grated chocolate as required.

Banana ice shake

2–3 bananas

2–3 heaped tbs. vanilla or lemon ice cream

2 packet of vanilla sugar

½ l milk

- Cut bananas into pieces and chop up in the blender for 5–10 seconds.
- When the appliance has come to standstill, add milk and ingredients and blend for approx. 1 minute until the mixture is frothy.



Fruit sundae

250 g fruit (e.g. strawberries, banana, orange, apple)

50–100 g sugar

500 ml cold water

Ice as required

- Peel fruit and cut into pieces
- Put all ingredients (except ice) in the blender and blend on setting 7 for approx. 1 minute.
- Serve with the ice cream



Sportsman's cocktail

2–3 oranges

1 lemon

½–1 tbs. sugar or honey

¼ l apple juice

¼ l mineral water and ice cube if required

- peel oranges and lemon, cut into pieces.
- Blend ingredients (except apple juice and mineral water) for approx. 30 seconds on setting 7.
- Add the apple juice and mineral water
- Blend briefly until the drink is frothy.
- Pour the cocktail into glasses and serve as required with ice cubes



Red fruit pudding

400 g fruit (pitted sour cherries, raspberries, black/red currants, strawberries, blackberries)

100 ml sour cherry juice

100 ml red wine

80 g sugar

1 packet of vanilla sugar

2 tbs. lemon juice

1 pinch of cloves (ground)

1 pinch of cinnamon (ground)

- 8 gelatine leaves
Soak the gelatine in cold water for approx. 10 minutes
- Bring all the ingredients (except the gelatine) to the boil
- Dry the gelatine and melt in the microwave, but do not cook
- Blend hot fruit and gelatine on setting 5 for approx. 1 minute.
- Pour the red fruit pudding into small bowls rinsed out with cold water and refrigerate

Tip: Red fruit pudding tastes good with whipped cream or vanilla sauce



en

Sports drink

200 g honey (from refrigerator)

5 g cinnamon

200 g milk (from refrigerator)

- Put honey and cinnamon in the blender and blend at setting M.
- After 5 seconds add the milk and blend for 3 seconds.

**Honey bread spread**

50 g butter (from refrigerator)

200 g honey (from refrigerator)

- Cut butter into small pieces and put into the blender.
- Add honey and blend for 8 seconds at setting M.

**Optional accessories****MUZ8ER3**

Stainless steel stirring bowl

Up to 3 kg of yeast dough or 3.5 kg of sponge mixture can be processed in the bowl.

**MUZ8ZP1**

Citrus press

For squeezing oranges, lemons and grapefruits.

**MUZ8AD1**

Adapter

For attaching the mincer MUZ8FW1 and the pasta attachments MUZ8NV1/NV2 and NV3.

**MUZ8FW1**

Mincer

For cutting fresh meat for steak tartare or meat loaf.

**MUZ8LS4/5**

Perforated disc sets

For the mincer MUZ8FW1.

Fine disc for pasties and spreads, coarse disc for sausages and bacon.

**MUZ8WS2**

Sausage attachment

For the mincer MUZ8FW1.

For filling artificial or natural casings with sausage meat.

**MUZ8SV1**

Viennese whirl attachment

For the mincer MUZ8FW1.

With metal template for 4 different pastry moulds.

**MUZ8RV1**

Grater attachment

For the mincer MUZ8FW1.

For grating nuts, almonds, chocolate and dried bread rolls.



MUZ8FV1
Juicer attachment

For the mincer MUZ8FW1.
For pressing soft fruit, except raspberries, tomatoes and rose hips, to a pulp. At the same time e.g. currants are automatically stemmed and pitted.



MUZ8MX2
Blender (glass)

For mixing liquid or semi-solid food, for cutting/chopping raw fruit and vegetables, for puréeing food.



MUZXL...
MUZXLVL1
Continuous-feed shredder

For slicing cucumbers, cabbage, kohlrabi, radish; for shredding carrots, apples and celery, red cabbage, cheese and nuts; for grating hard cheese, chocolate and nuts.

Set MUZXL... contains Profi Supercut reversible disc – coarse/fine, Asiatic vegetables disc, reversible shredding disc – coarse/fine, grating disc – medium-fine.

Set MUZXLVL1 contains reversible slicing disc – coarse/fine, reversible shredding disc – coarse/fine, grating disc – medium-fine, Asiatic vegetables disc, potato pancake disc.



MUZ8PS1
Chipper disc

For the continuous-feed shredder MUZXLVL1.
For slicing raw potatoes for chips.



MUZ8RS1
Grating disc coarse

For the continuous-feed shredder MUZXLVL1.
For grating raw potatoes, e.g. for potato pancakes or dumplings.



MUZ8KP1
Potato fritter disc

For the continuous-feed shredder MUZXLVL1.
For grating raw potatoes for rostis and potato fritters, for cutting fruit and vegetables into thick slices.



MUZ8AG1
Asiatic vegetables disc

Slices fruit and vegetables into fine strips for Asian vegetable dishes.



MUZ8KS1
Grating disc, fine

For grating hard cheese (e.g. Parmesan).



MUZ8MM1
Multi-mixer

For chopping herbs, vegetables, apples and meat, for shredding carrots, radishes and cheese, for grating nuts and cooled chocolate.

en



MUZ8GM1
Grain mill

For grinding all types of grain (except maize), poppy seeds, linseeds, sesame, buckwheat, etc. Even herbs, spices and coffee can be ground.

If an accessory is not included in the product package, it can be purchased via the trade or from customer service.

Instructions on disposal



This appliance has been identified in accordance with the European directive 2012/19/EC on Waste Electrical and Electronic Equipment – WEEE.

The Directive paves the way for effective EU-wide withdrawal and utilization of waste appliances.

Please ask your dealer or inquire at your local authority about current means of disposal.

Warranty conditions

The guarantee conditions for this appliance are as defined by our representative in the country in which it is sold.

Details regarding these conditions can be obtained from the dealer from whom the appliance was purchased.

The bill of sale or receipt must be produced when making any claim under the terms of this guarantee.

Kundendienst – Customer Service

DE Deutschland, Germany

BSH Hausgeräte Service GmbH
Zentralwerkstatt für kleine
Hausgeräte
Trautskirchener Strasse 6-8
90431 Nürnberg

Online Auftragsstatus, Filterbeutel-
Konfigurator und viele weitere
Infos unter:
www.bosch-home.com

Reparaturservice, Ersatzteile &
Zubehör, Produkt-Informationen:
Tel.: 0911 70 440 040
<mailto:cp-servicecenter@bshg.com>

Wir sind an 365 Tagen rund um die Uhr
erreichbar.

AE United Arab Emirates, الإمارات العربية المتحدة

BSH Home Appliances FZE
Round About 13,
Plot Nr MO-0532A
Jebel Ali Free Zone – Dubai
Tel.: 04 881 4401
mailto:service.uae@bshg.com
www.bosch-home.com/ae

AL Republika e Shqiperise, Albania

AERTECH SH.P.K.
Rruga Qemal Stafa
Pallati i ri perball Prokuroris se
Pergjithshme
Hyrja C Kati 10
Tirana
Tel.: 066 206 47 94
mailto:g.volina@aertech.al

AT Österreich, Austria

BSH Hausgeräte
Gesellschaft mbH
Werkskundendienst
für Hausgeräte
Quellenstrasse 2
1100 Wien
Tel.: 0810 550 511*
Fax: 01 605 75 51 212
mailto:vie-stoerungsannahme@bshg.com

Hotline für Espresso-Geräte:
Tel.: 0810 700 400*
www.bosch-home.at
*innerhalb Österreichs zum Regionaltarif

AU Australia

BSH Home Appliances Pty. Ltd.
7-9 Arco Lane
HEATHERTON, Victoria 3202
Tel.: 1300 368 339
mailto:bshau-as@bshg.com
www.bosch-home.com.au

BA Bosna i Hercegovina, Bosnia-Herzegovina

"HIGH" d.o.o.
Gradačanka 29b
71000 Sarajevo
Info-Line: 061 100 905
Fax: 033 213 513
mailto:delicnanda@hotmail.com

BE Belgique, België, Belgium

BSH Home Appliances S.A.
Avenue du Laerbeek 74
Laarbeeklaan 74
1090 Bruxelles – Brussel
Tel.: 070 222 141
Fax: 024 757 291
mailto:bru-repairs@bshg.com
www.bosch-home.be

BG Bulgaria

BSH Domakinski Uredi
Bulgaria EOOD
115K Tsarigradsko Chausse Blvd.
European Trade Center Building,
5th floor
1784 Sofia
Tel.: 02 892 90 47
Fax: 02 878 79 72
mailto:informacia.servis-bg@bshg.com
www.bosch-home.bg

BH Bahrain, مملكة البحرين

Khalaifat Company
Manama
Tel.: 01 7400 553
mailto:service@khalaifat.com

BY Belarus, Беларусь

ООО "БСХ Бытовая техника"
тел.: 495 737 2961
mailto:mok-kdhl@bshg.com

CH Schweiz, Suisse, Svizzera, Switzerland

BSH Hausgeräte AG
Werkskundendienst für
Hausgeräte
Fahrweidstrasse 80
8954 Geroldswil
mailto:ch-info.hausgeraete@bshg.com
Service Tel.: 0848 840 040
Service Fax: 0848 840 041
mailto:ch-reparatur@bshg.com
Ersatzteile Tel.: 0848 880 080
Ersatzteile Fax: 0848 880 081
mailto:ch-ersatzteil@bshg.com
www.bosch-home.com

CY Cyprus, Κύπρος

BSH Ikiakes Syskeves-Service
39, Arh. Makaariou III Str.
2407 Egomi/Nikosia (Lefkosia)
Tel.: 7777 8007
Fax: 022 658 128
mailto:bsh.service.cyprus@cytanet.com.cy

CZ Česká Republika, Czech Republic

BSH domácí spotřebiče s.r.o.
Firemní servis domácích
spotřebičů
Pekařská 10b
155 00 Praha 5
Tel.: 0251 095 546
Fax: 0251 095 549
www.bosch-home.com/cz

DK Danmark, Denmark

BSH Hvidevarer A/S
Telegrafvej 4
2750 Ballerup
Tel.: 44 89 89 85
Fax: 44 89 89 86
mailto:BSH-Service.dk@BSHG.com
www.bosch-home.dk

EE Eesti, Estonia

SIMSON OÜ
Raua 55
10152 Tallinn
Tel.: 0627 8730
Fax: 0627 8733
mailto:teenindus@simson.ee

ES España, Spain

BSH Electrodomésticos
España S.A.
Servicio Oficial del Fabricante
Parque Empresarial PLAZA,
C/ Manfredonia, 6
50197 Zaragoza
Tel.: 902 245 255
Fax: 976 578 425
mailto:CAU-Bosch@bshg.com
www.bosch-home.es

FI Suomi, Finland

BSH Kodinkoneet Oy
Itälahdenkatu 18 A, PL 123
00201 Helsinki
Tel.: 0207 510 700
Fax: 0207 510 780
mailto:Bosch-Service-FI@bshg.com
www.bosch-home.fi
Lankapuhelimesta 8,28 snt/puhelu
+ 7 snt/min (alv 23%)
Matkapuhelimesta 8,28 snt/puhelu
+ 17 snt/min (alv 23%)

FR France

BSH Electroménager S.A.S.
50 rue Ardoin – BP 47
93401 SAINT-OUEN cedex
Service interventions à domicile:
01 40 10 11 00

Service Consommateurs:
0 892 698 010 (0,34 € TTC/mn)
mailto:soa-bosch-conso@bshg.com
Service Pièces Détachées et
Accessoires:
0 892 698 009 (0,34 € TTC/mn)
www.bosch-home.fr

GB Great Britain

BSH Home Appliances Ltd.
Grand Union House
Old Wolverton Road
Wolverton
Milton Keynes MK12 5PT
To arrange an engineer visit, to
order spare parts and accessories
or for product advice please visit
www.bosch-home.co.uk
or call
Tel.: 0844 892 8979*

*Calls from a BT landline will be charged at
up to 3 pence per minute. A call set-up fee
of up to 6 pence may apply.

GR Greece, Ελλάδα

BSH Ikiakes Siskeves A.B.E.
Central Branch Service
17 km E.O. Athinon-Lamias &
Potamou 20
14564 Kifisia
Πανελλήνιο τηλέφωνο: 181 82
(αστική χρέωση)
www.bosch-home.gr

HK Hong Kong, 香港

BSH Home Appliances Limited
Unit 1 & 2, 3rd Floor
North Block, Skyway House
3 Sham Mong Road
Tai Kok Tsui, Kowloon
Hong Kong
Tel.: 2565 6151
Fax: 2565 6681
mailto:bosch.hk.service@bshg.com
www.bosch-home.cn

HR Hrvatska, Croatia

BSH kućni uređaji d.o.o.
Kneza Branimira 22
10000 Zagreb
Tel.: 01 640 36 09
Fax: 01 640 36 03
mailto:informacije.servis-hr@
bshg.com
www.bosch-home.com/hr

HU Magyarország, Hungary

BSH Háztartási Készülék
Kereskedelmi Kft.
Háztartási gépek márkaszervize
Királyhágó tér 8-9
1126 Budapest
Hibabejelentés
Tel.: 01 489 5461
Fax: 01 201 8786
mailto:hibabejelentes@bsh.hu
Alkatrészrendelés
Tel.: 01 489 5463
Fax: 01 201 8786
mailto:alkatrészrendeles@bsh.hu
www.bosch-home.com/hu

IE Republic of Ireland

BSH Home Appliances Ltd.
Unit F4, Ballymount Drive
Ballymount Industrial Estate
Walkinstown
Dublin 12
Service Requests,
Spares and Accessories
Tel.: 01450 2655
Fax: 01450 2520
www.bosch-home.co.uk

IL Israel, יִשְׂרָאֵל

C/S/B Home Appliance Ltd.
Ulial Building
2, Hamelacha St.
Industrial Park North
71293 Lod
Tel.: 08 9777 222
Fax: 08 9777 245
mailto:csb-serv@zahav.net.il
www.bosch-home.co.il

IN India, Bhārat, भारत

BSH Customer Service Front Office
Shop No.4, Everest Grande,
Opp. Shanti Nagar Bus Stop,
Mahakali Caves Road, Andheri East
Mumbai 400093

IS Iceland

Smith & Norland hf.
Noatuni 4
105 Reykjavik
Tel.: 0520 3000
Fax: 0520 3011
www.sminor.is

IT Italia, Italy

BSH Elettrodomestici S.p.A.
Via. M. Nizzoli 1
20147 Milano (MI)
Numero verde 800 829 120
mailto:info@bosch-elettrodomestici.it
www.bosch-home.com/it

KZ Kazakhstan, Қазақстан

IP Turebekov Yerzhan
Nurmanovich
Jangeldina str. 15
Shimkent 160018
Tel.: 0252 31 00 06
mailto:evrika_kz@mail.ru

LB Lebanon, لبنان

Teheni, Hana & Co.
Boulevard Dora 4043 Beyrouth
P.O. Box 90449
Jdeideh 1202 2040
Tel.: 01 255 211
mailto:Info@Teheni-Hana.com

LT Lietuva, Lithuania

Senuku prekybos centras UAB
Jonavos g. 62
44192 Kaunas
Tel.: 0372 12146
Fax: 0372 12165
www.senukai.lt

LU Luxembourg

BSH électroménagers S.A.
13-15 ZI Breedeweues
1259 Senningerberg
Tel.: 26349 300
Fax: 26349 315
mailto:lux-service.electromenager@
bshg.com
www.bosch-home.com/lu

LV Latvija, Latvia

General Serviss Limited
Bullu street 70c
1067 Riga
Tel.: 07 42 41 37
mailto:bt@olimpeks.lv

Elkor Serviss
Brivibas gatve 201
1039 Riga
Tel.: 067 0705 20; -36
Fax: 067 0705 24
mailto:domoservice@elkor.lv
www.servisacentrs.lv

MD Moldova

S.R.L. "Rialto-Studio"
ул. Щусева 98
2012 Кишинев
тел./факс: 022 23 81 80
mailto:bosch-md@mail.ru

ME Crna Gora, Montenegro

Elektronika komerc
Ul. Slobode 17
84000 Bijelo Polje
Tel./Fax: 050 432 575
Mobil: 069 324 812
mailto:ekobosch.servis@
t-com.me

MK Macedonia, Македонија

GORENEC
Jane Sandanski 69 lok.3
1000 Skopje
Tel.: 022 454 600
Mobil: 070 697 463
mailto:gorenec@yahoo.com

MT Malta

Oxford House Ltd.
Notabile Road
Mriehel BKR 14
Tel.: 021 442 334
Fax: 021 488 656
www.oxfordhouse.com.mt

MV Raajjeyge Jumhooriyyaa, Maldives

Lintel Investments
Ma. Maadheli, Majeedhee Magu
Malé
Tel.: 0331 0742
mailto:mohamed.zuhuree@
lintel.com.mv

NL Nederland, Netherlands

BSH Huishoudapparaten B.V.
Taurusavenue 36
2132 LS Hoofddorp
Storingsmelding:
Tel.: 088 424 4010
Fax: 088 424 4845
mailto:bosch-contactcenter@
bshg.com
Onderdelenverkoop:
Tel.: 088 424 4010
Fax: 088 424 4801
mailto:bosch-onderdelen@bshg.com
www.bosch-home.nl

NO Norge, Norway

BSH Husholdningsapparater A/S
Grensesvingen 9
0661 Oslo
Tel.: 22 66 06 00
Fax: 22 66 05 50
mailto:Bosch-Service-NO@
bshg.com
www.bosch-home.no

NZ New Zealand

BSH Home Appliances Ltd.
Unit F 2, 4 Orbit Drive
Mairangi Bay
Auckland 0632
Tel.: 09 477 0492
Fax: 09 477 2647
mailto:bshnz-cs@bshg.com
www.bosch-home.co.nz

PL Polska, Poland

BSH Sprzet Gospodarstwa
Domowego sp. z o.o.
Al. Jerozolimskie 183
02-222 Warszawa
Centrala Serwisu
Tel.: 801 191 534
Fax: 022 572 7709
mailto:Serwis.Fabryczny@bshg.com
www.bosch-home.pl

PT Portugal

BSHP Electrodomésticos Lda.
Rua Alto do Montijo, nº 15
2790-012 Carnaxide
Tel.: 707 500 545*
Fax: 214 250 701
mailto:bosch.electrodomesticos.pt@
bshg.com
www.bosch-home.pt
*(PT 0,10 €/min., Mobile 0,25 €/min)

RO România, Romania

BSH Electrocasnice srl.
Sos. Bucuresti-Ploiesti,
nr. 19-21, sect. 1
13682 Bucuresti
Tel.: 021 203 9748
Fax: 021 203 9733
mailto:service.romania@bshg.com
www.bosch-home.ro

RU Russia, Россия

ООО "БСХ Бытовая техника"
Сервис от производителя
Малая Калужская 19/1
119071 Москва
тел.: 495 737 2961
mailto:mok-kdhl@bshg.com
www.bosch-home.com

SA Kingdom Saudi Arabia,

المملكة العربية السعودية
BSH Home Appliances
Saudi Arabia L.L.C.
Bin Hamran Commercial Centr.
6th Floor 603B
Jeddah 21481
Tel.: 800 124 1247
mailto:service.ksa@bshg.com
www.bosch-home.com/sa

SE Sverige, Sweden

BSH Hushållsapparater AB
Landsvägen 32
169 29 Solna
Tel.: 0771 11 22 77 local rate
mailto:Bosch-Service-SE@
bshg.com
www.bosch-home.se

SG Singapore, 新加坡

BSH Home Appliances Pte. Ltd.
TECHPLACE I and
Mo Kio Avenue 10
Block 4012 #01-01
569628 Singapore
Tel.: 6751 5000
Fax: 6751 5005
mailto:bshsgp.service@bshg.com
www.bosch-home.com.sg

SI Slovenija, Slovenia

BSH Hišni aparati d.o.o.
Litostrojska 48
1000 Ljubljana
Tel.: 01 583 07 01
Fax: 01 583 08 89
mailto:informacije.servis@
bshg.com
www.bosch-home.com/si

SK Slovensko, Slovakia

BSH domácí spotřebiče s.r.o.
Organizačná zložka Bratislava
Galvaniho 17/C
821 04 Bratislava
Tel.: 02 44 45 20 41
mailto:opravy@bshg.com
www.bosch-home.com/sk

TR Türkiye, Turkey

BSH Ev Aletleri Sanayi
ve Ticaret A.S.
Fatih Sultan Mehmet Mahallesi
Balkan Caddesi No: 51
34771 Ümraniye, İstanbul
Tel.: 0 216 444 6333*
Fax: 0 216 528 9188
mailto:careline.turkey@bshg.com
www.bosch-home.com/tr

*Çağrı merkezini sabit hatlardan aramanın
bedelli şehir içi ücretlendirme, Cep
telefonlarından ise kullanılan tarifeyle göre
değişkenlik göstermektedir

TW Taiwan, 台灣

Achelis Taiwan Co. Ltd.
4th floor, No. 112 Sec 1
Chung Hsiao E Road
Taipei ROC 100
Tel.: 02 2321 6222
mailto:Bosch@achelis.com.tw

UA Ukraine, Україна

ТОВ "БСХ Побутова Техніка"
тел.: 044 490 2095
mailto:bsh-service.ua@bshg.com
www.bosch-home.com.ua

XK Kosovo

NTP GAMA
Rruga Mag Prishtine-Ferizaj
70000 Ferizaj
Tel.: 0290 321 434
mailto:a_service@
gama-electronics.com

XS Srbija, Serbia

BSH Kućni aparati d.o.o.
Milutina Milankovića 11^a
11070 Novi Beograd
Tel.: 011 205 23 97
Fax: 011 205 23 89
mailto:informacije.servis-sr@
bshg.com
www.bosch-home.rs

ZA South Africa

BSH Home Appliances (Pty) Ltd.
15th Road Randjespark
Private Bag X36, Randjespark
1685 Midrand – Johannesburg
Tel.: 086 002 6724
Fax: 086 617 1780
mailto:applianceserviceza@
bshg.com
www.bosch-home.com/za

☎ Beratung und Reparaturauftrag bei Störungen

D 0911 / 70 440 040

A 0810 / 550 511

CH 0848 840 040

Die Kontaktdaten aller Länder finden Sie im beiliegenden Kundenservice-Verzeichnis.

Bosch Home Appliance Group

P.O. Box 83 01 01

D-81701 Munich

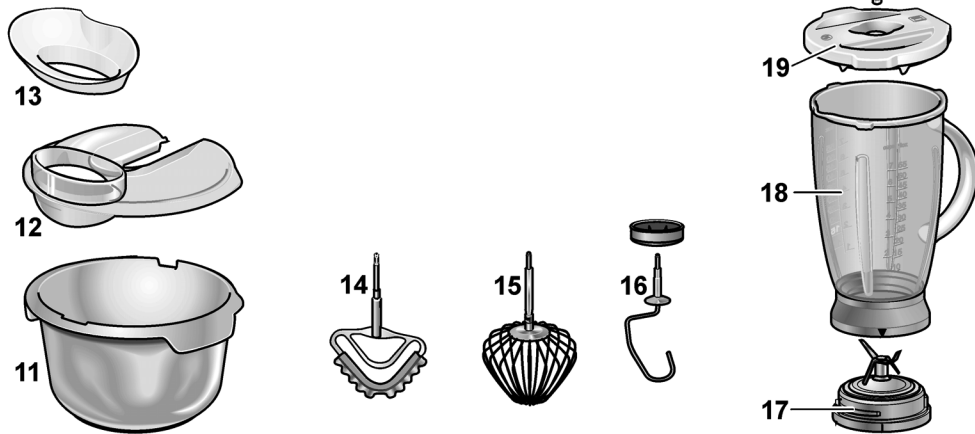
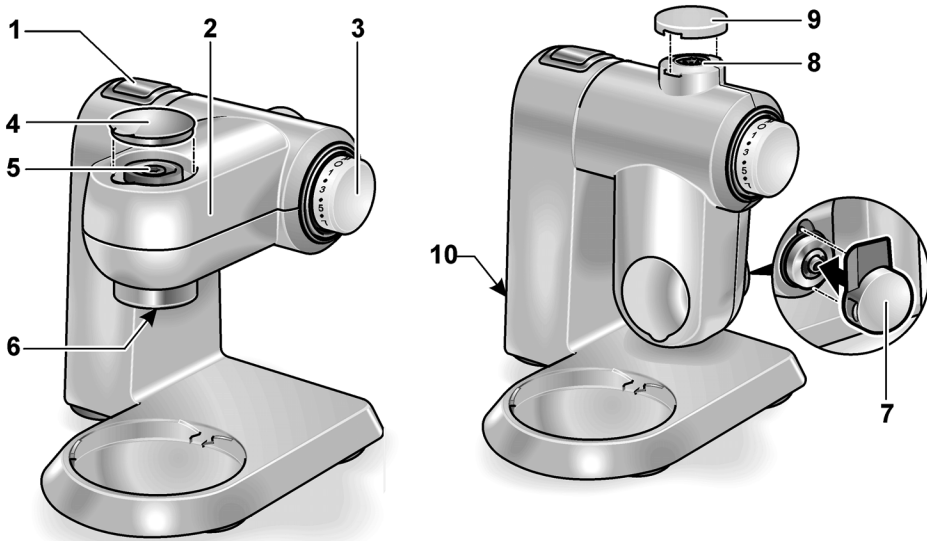
Germany

www.bosch-home.com

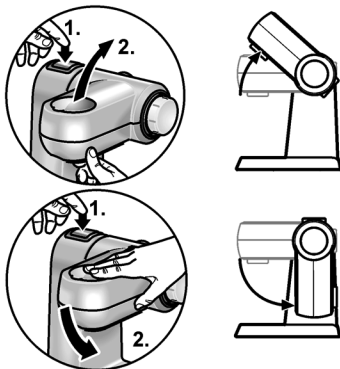


8001004160 (9409)
en

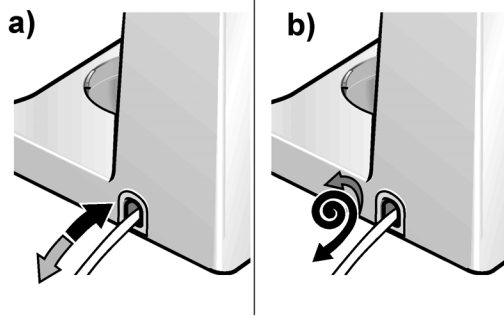
A



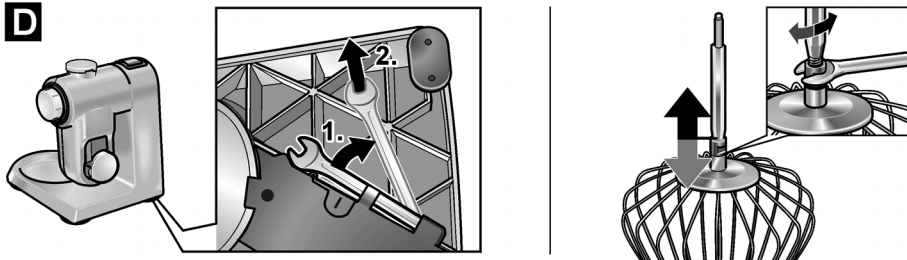
B



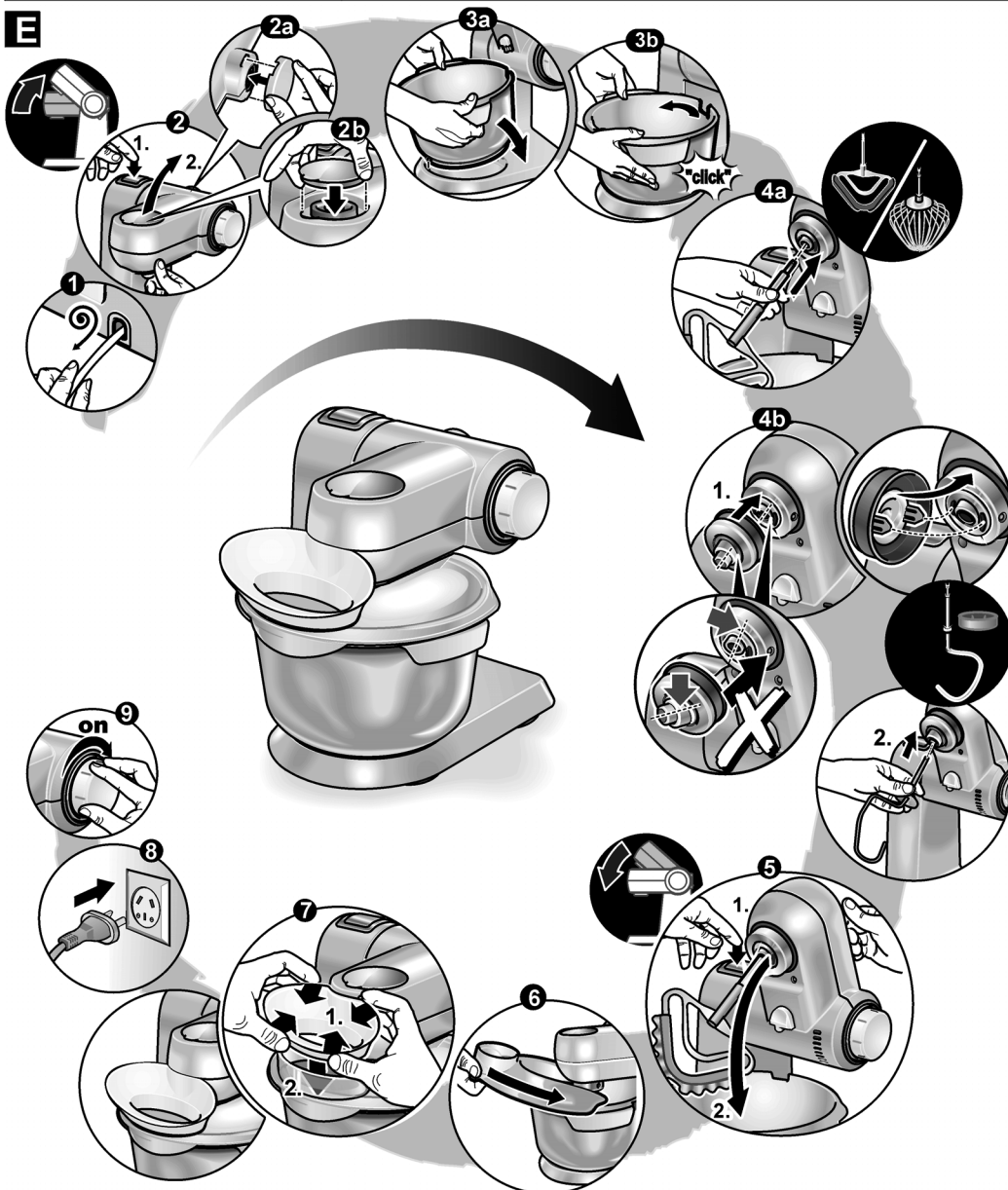
C



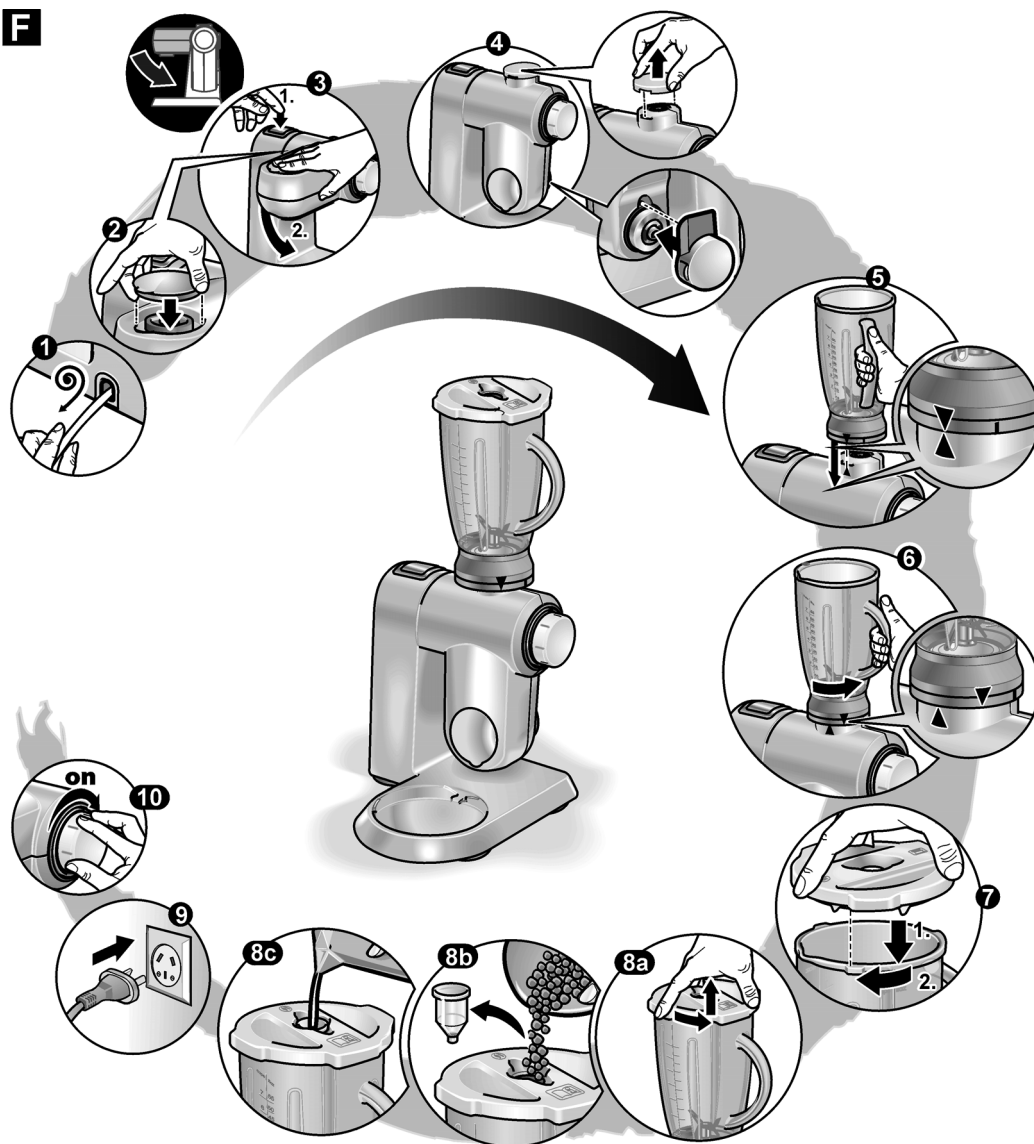
D



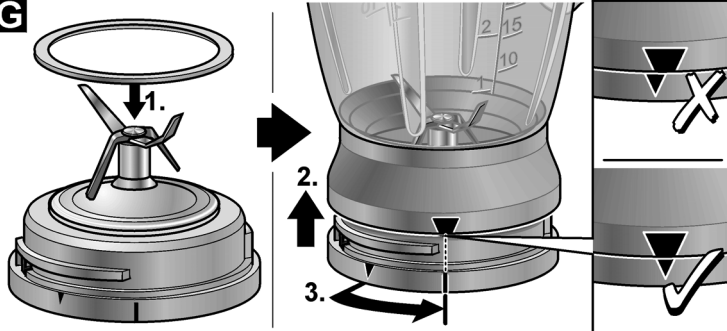
E



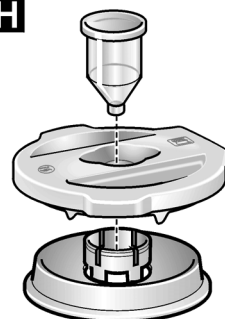
F





















G



H



J						
MUMXL20TAU						

						
MUMXL20TAU			<i>Profi Supercut</i>			